

RIVA BED

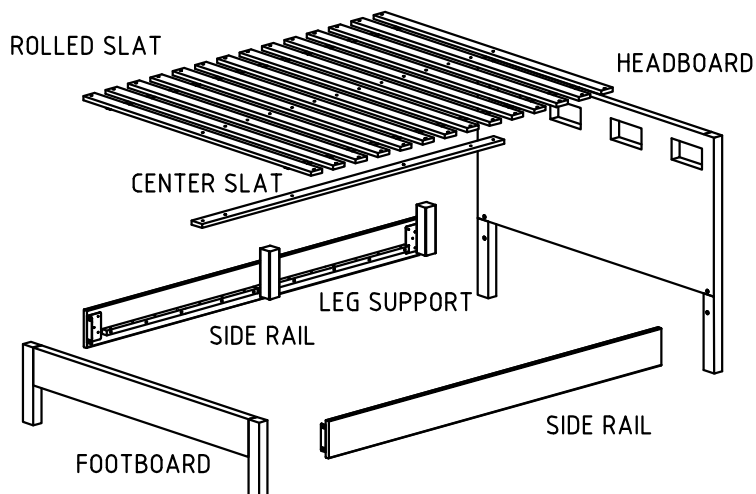
ASSEMBLY INSTRUCTION

WARNING !!!

WE RECOMMEND TO HAVE ANOTHER PERSON TO EASE ASSEMBLY PROCEDURE

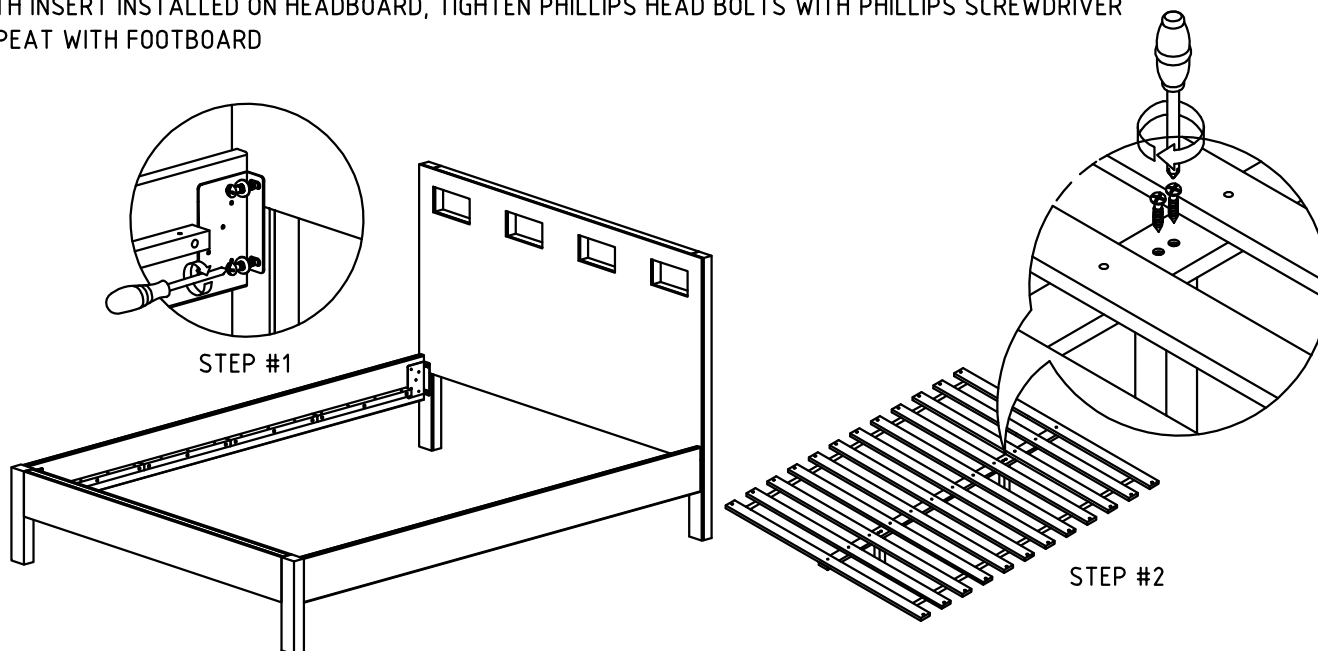
HARDWARE LIST :

>PHILLIPS HEAD WOOD SCREW	18 PCS
>PHILLIPS HEAD BOLT	8 PCS
>WASHER	8 PCS
>ALLEN KEY	1 PC
>ALLEN BOLT	6 PCS



STEP #1

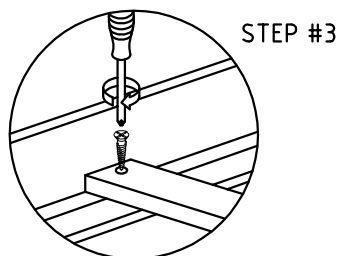
SLIDE PHILLIPS HEAD BOLTS AND WASHERS THROUGH HOLES ON METAL BRACKET AND ALIGN TO PRE-DRILLED WITH INSERT INSTALLED ON HEADBOARD, TIGHTEN PHILLIPS HEAD BOLTS WITH PHILLIPS SCREWDRIVER REPEAT WITH FOOTBOARD



STEP #2

ATTACH TWO LEG SUPPORT WHICH CAN BE LOCATED ON THE SIDE RAIL BOX TO CENTER SLAT USING FOUR PIECES PHILLIPS HEAD WOOD SCREWS. LAY DOWN THE ROLLED SLAT AND FIX CENTER SLAT USING THE SIX ALLEN BOLTS AND TIGHTEN WITH ALLEN KEY

MAKE SURE 'T-NUT' ON CENTER SLAT ARE FACING TO THE FLOOR AND NYLON STRAPS AT ROLLED SLAT TOO.



STEP #3

PLACE SLAT ASSEMBLY INTO BED ASSEMBLY AND DRILLING 14 PCS PHILLIPS HEAD WOOD SCREWS INTO EVERY OTHER SLAT FOR FITTING

