

*ASSEMBLY INSTRUCTIONS
COASTER FINE FURNITURE*



Fine Furniture for every stage of life

701979
TV CONSOLE

ITEM:701979

ASSEMBLY INSTRUCTIONS

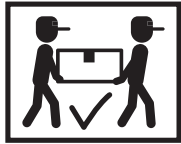
ASSEMBLY TIPS:

1. Remove hardware from box and sort by size.
2. Please check to see that all hardware and parts are present prior to start of assembly.
3. Please follow attached instructions in the same sequence as numbered to assure fast & easy assembly.



WARNING!

1. Don't attempt to repair or modify parts that are broken or defective. Please contact the store immediately.
2. This product is for home use only and not intended for commercial establishments.

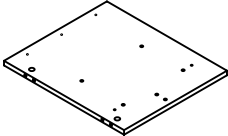
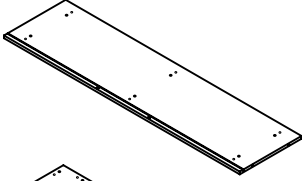
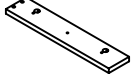
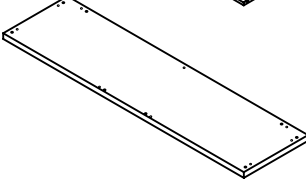
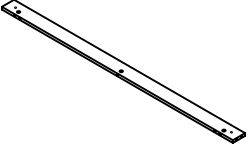
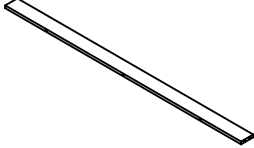
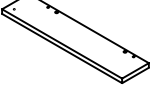
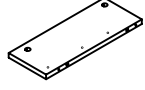
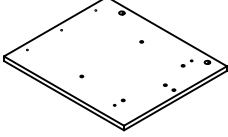
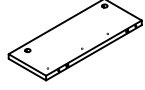
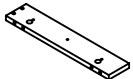
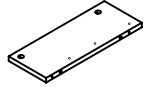
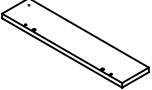
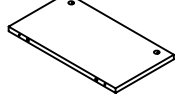
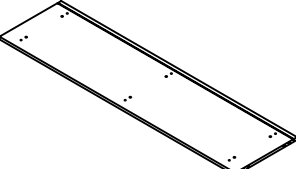
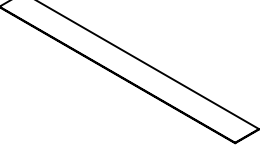


ASSEMBLY TIME

60 MINUTES

MAX TV SIZE : 65"

PARTS IDENTIFICATION

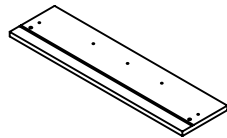
A	LEFT SIDE PANEL		1 PC	I	CROSS PANEL		1 PC
B	LEFT CROSS BRACE		1 PC	J	TOP PANEL		1 PC
C	LONG CROSS BRACE		1 PC	K	LOWER CROSS BRACE		1 PC
D	LEFT DIVIDER PANEL		1 PC	L	LOWER LEFT DIVIDER PANEL		1 PC
E	RIGHT SIDE PANEL		1 PC	M	LOWER MIDDLE DIVIDER PANEL		1 PC
F	RIGHT CROSS BRACE		1 PC	N	LOWER RIGHT DIVIDER PANEL		1 PC
G	RIGHT DIVIDER PANEL		1 PC	O	UPPER BACK PANEL		1 PC
H	BOTTOM PANEL		1 PC	P	LOWER BACK PANEL		1 PC

NOTE:

Phillips head screw driver is required in the assembly process; however, manufacturer does not provide this item.

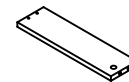
ITEM:701979

Q DRAWER
FRONT PANEL



2 PCS

T RIGHT DRAWER
SIDE PANEL



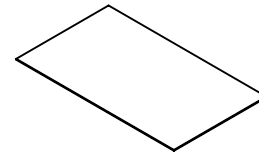
2 PCS

R DRAWER BACK
PANEL



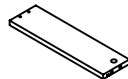
2 PCS

U DRAWER
BOTTOM PANEL



2 PCS

S LEFT DRAWER
SIDE PANEL



2 PCS

HARDWARE IDENTIFICATION

Z NO	DESCRIPTION	FIGURE	Q'TY	NO	DESCRIPTION	FIGURE	Q'TY
1	GLUE 40g		1 PC	8	SHORT SCREW Ø 3x10mm SR		24 PCS
2	WOODEN DOWEL Ø 8x30mm		49 PCS	9	PLASTIC FEET Ø 15mm		5 PCS
3	CAM BOLT Ø 7x35.5mm SR		27 PCS	10	HANDLE L = 290mm		2 PCS
4	CAM LOCK Ø 15x12mm SR		27 PCS	11	HANDLE BOLT Ø 4x28mm SR		6 PCS
5	LONG SCREW Ø 4.5x42mm SR		8 PCS	12	ALLEN WRENCH Ø 4x28mm RBW		8 PCS
6	SCREW Ø 4.3x35mm SR		8 PCS	13	STICKER Ø 20mm		5 PCS
7	RAIL L = 350mm WHT		2 SET				

Z7,Z10,Z11 not included in blister packaging.

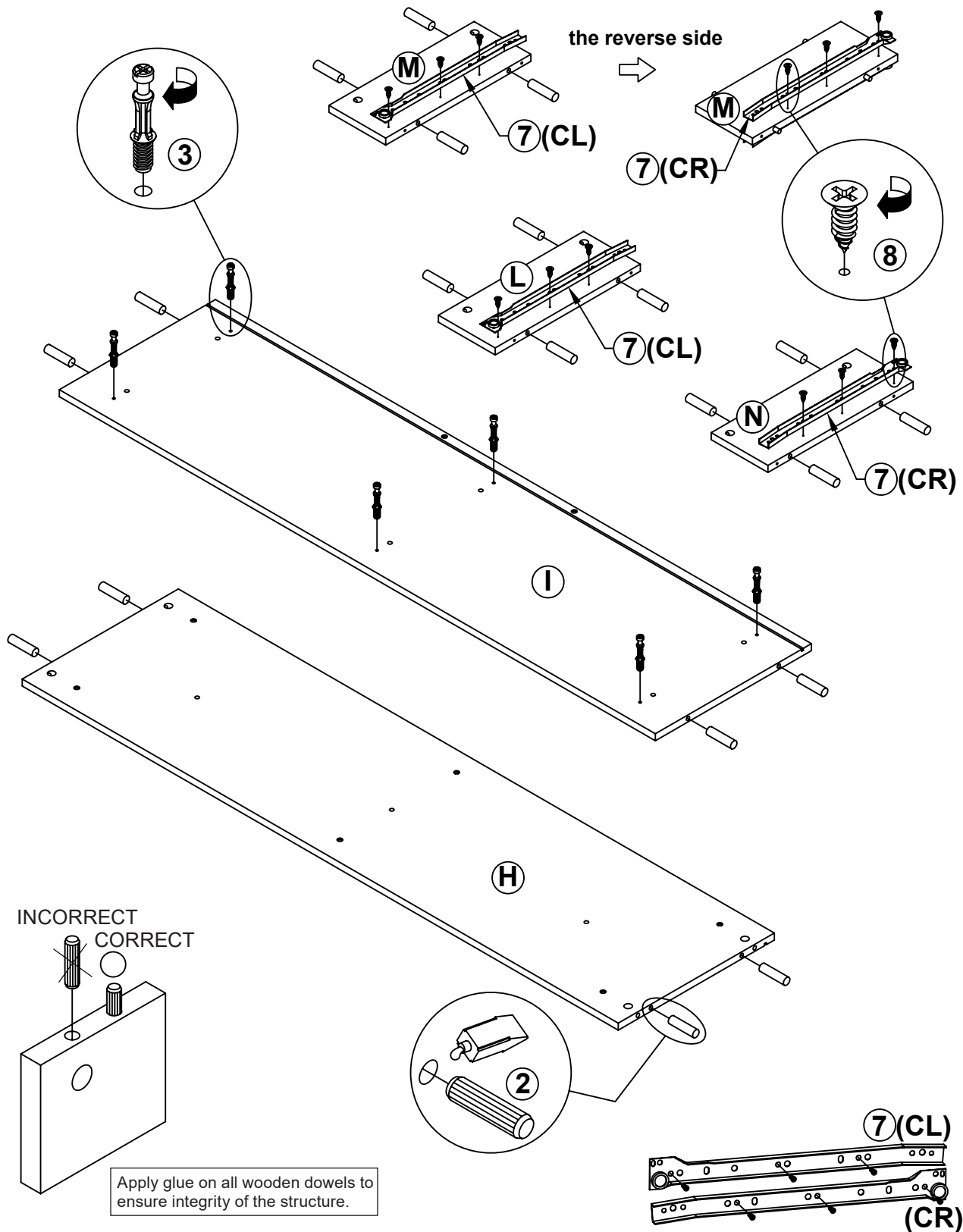
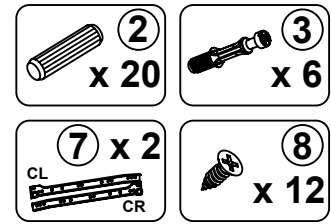
NOTE:

Phillips head screw driver is required in the assembly process; however, manufacturer does not provide this item.

ITEM: 701979

STEP 1

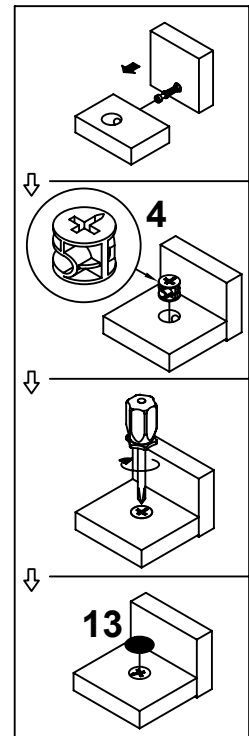
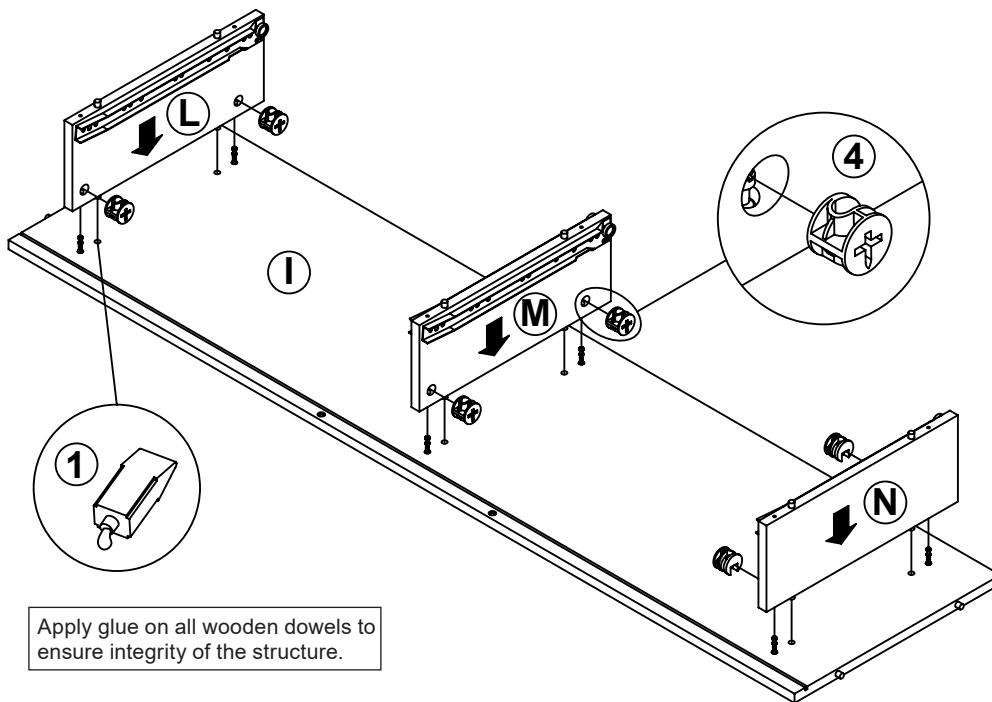
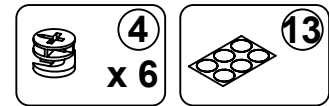
COASTER
FINE FURNITURE



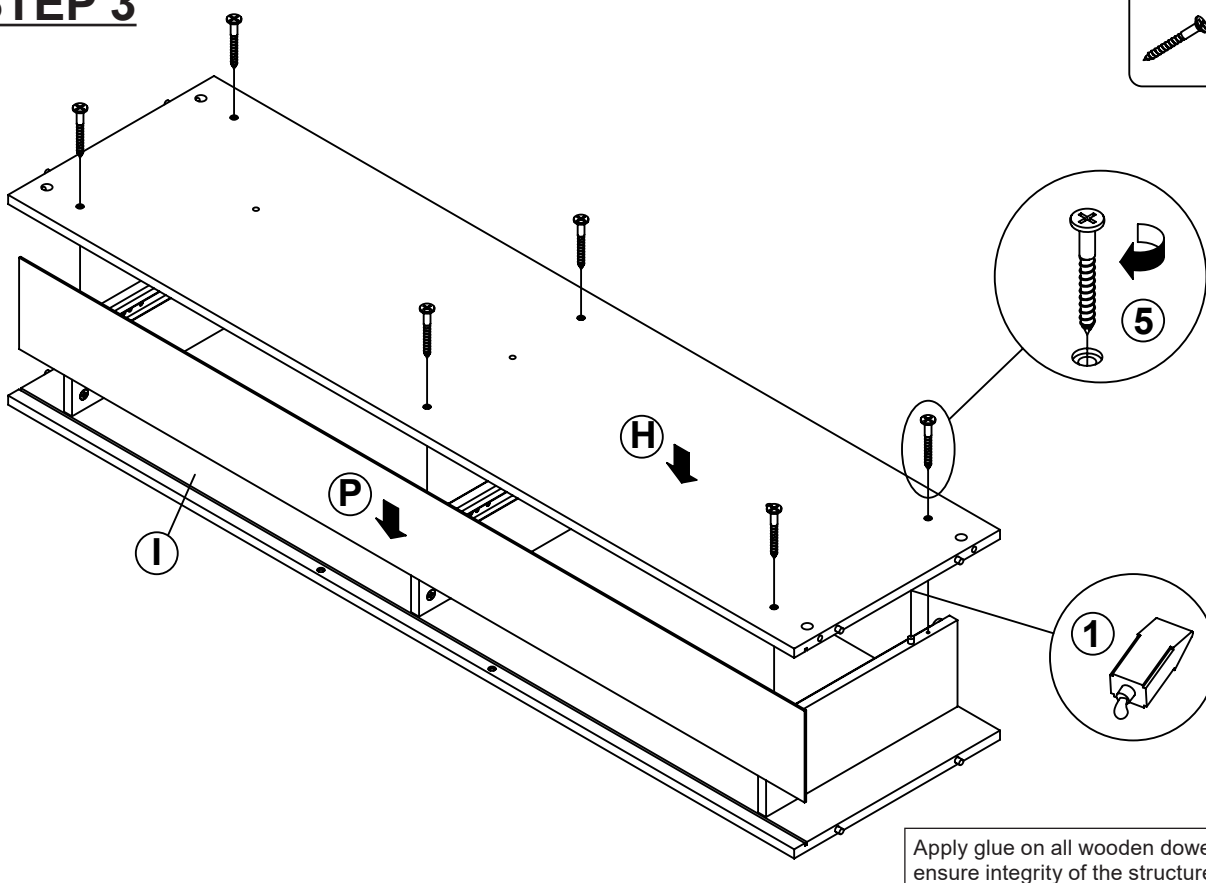
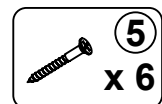
ITEM: 701979

COASTER
FINE FURNITURE

STEP 2



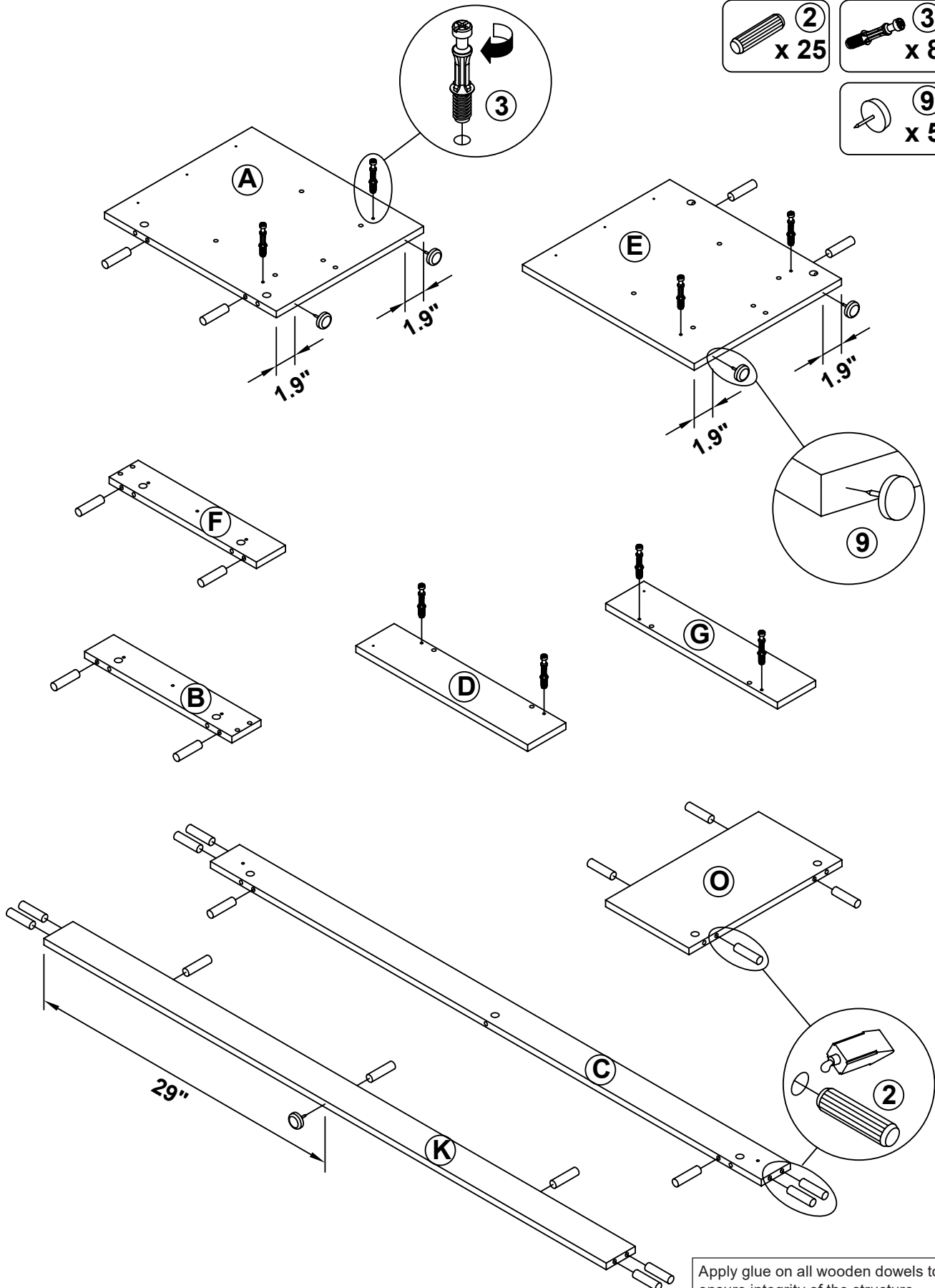
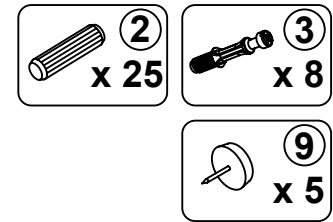
STEP 3

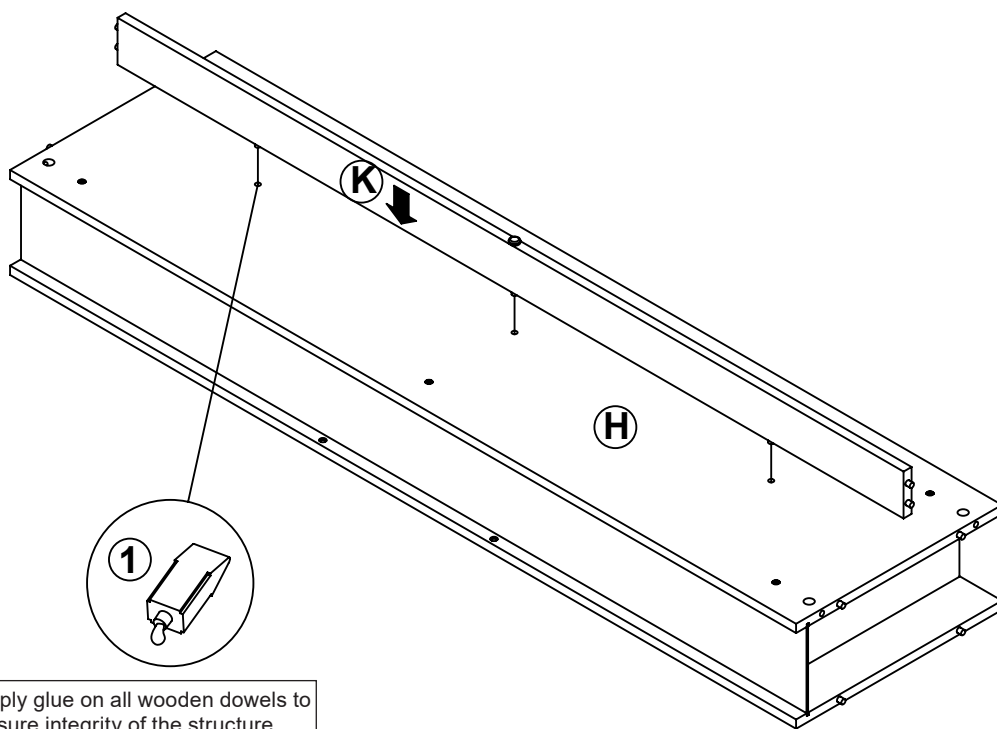
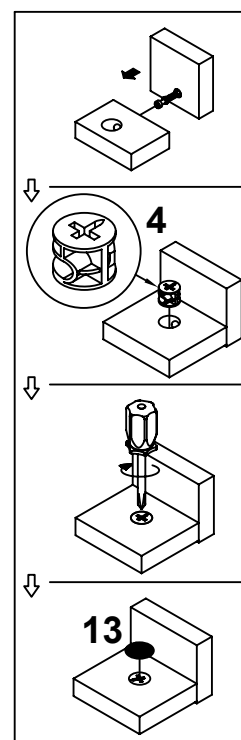
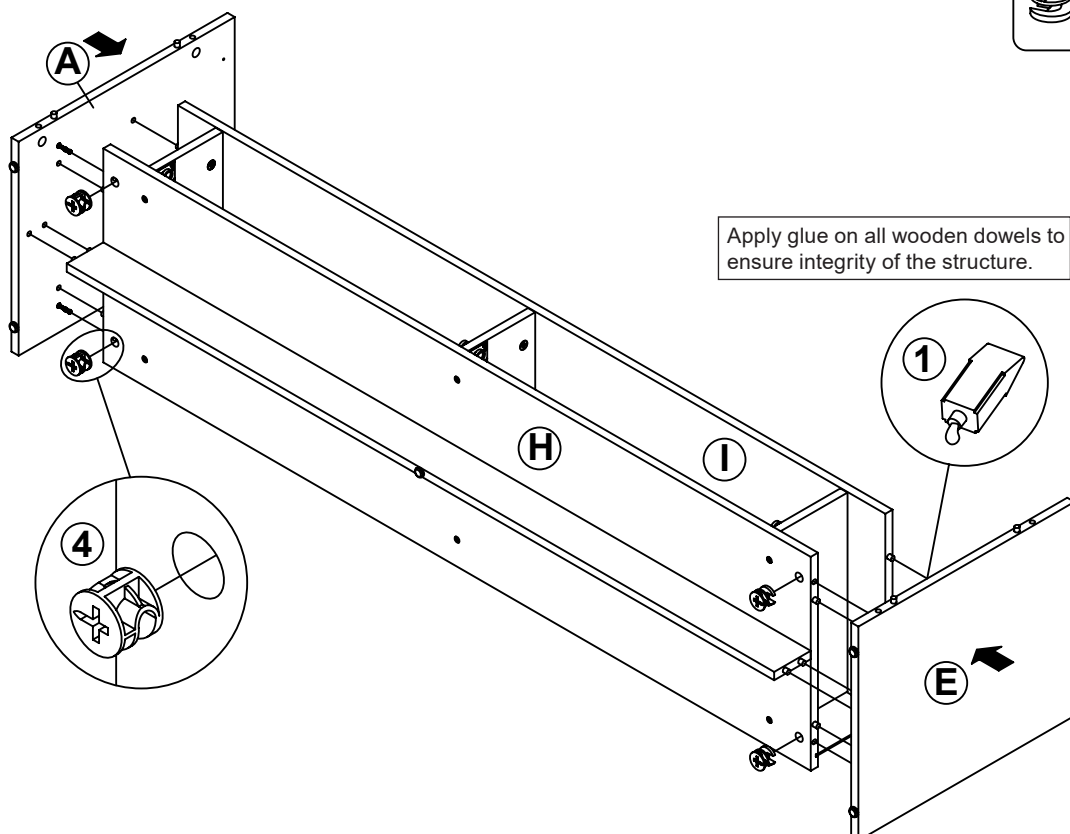


ITEM: 701979

STEP 4

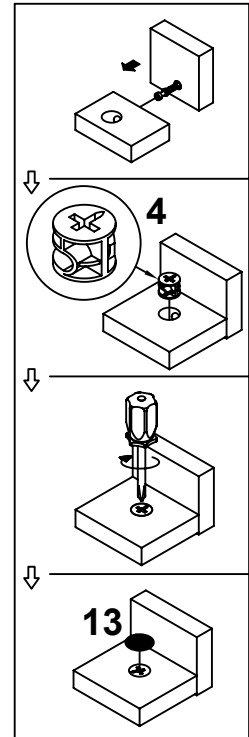
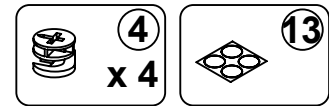
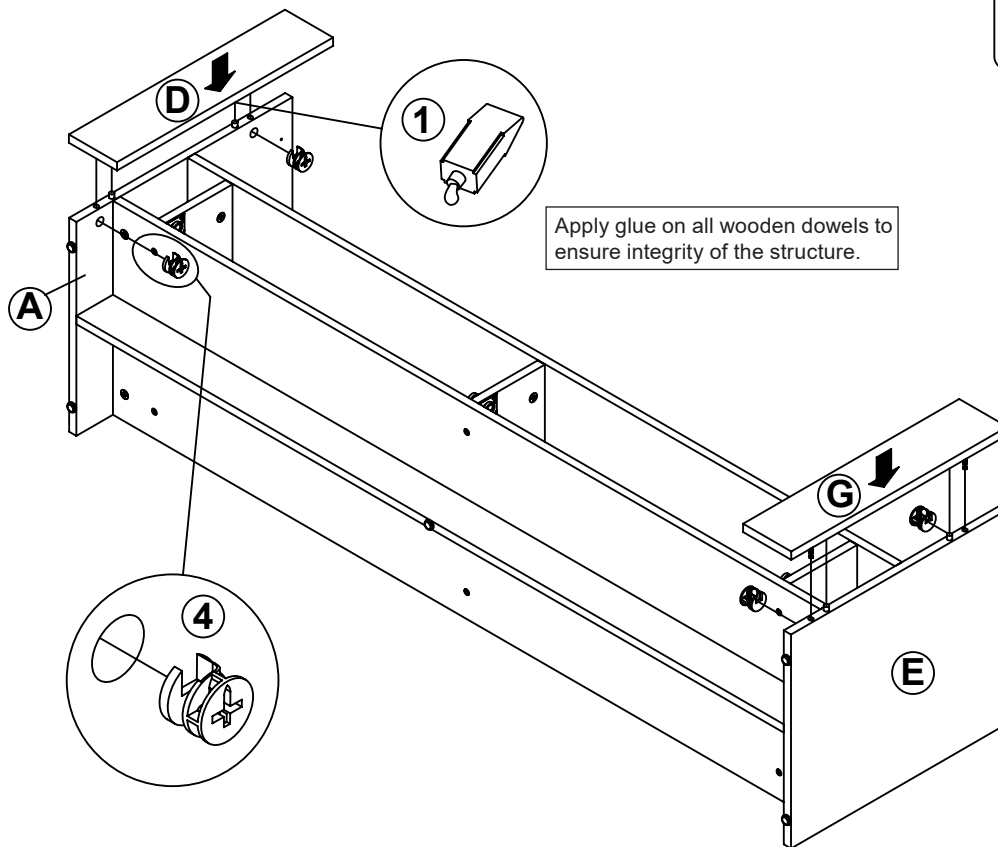
COASTER
FINE FURNITURE



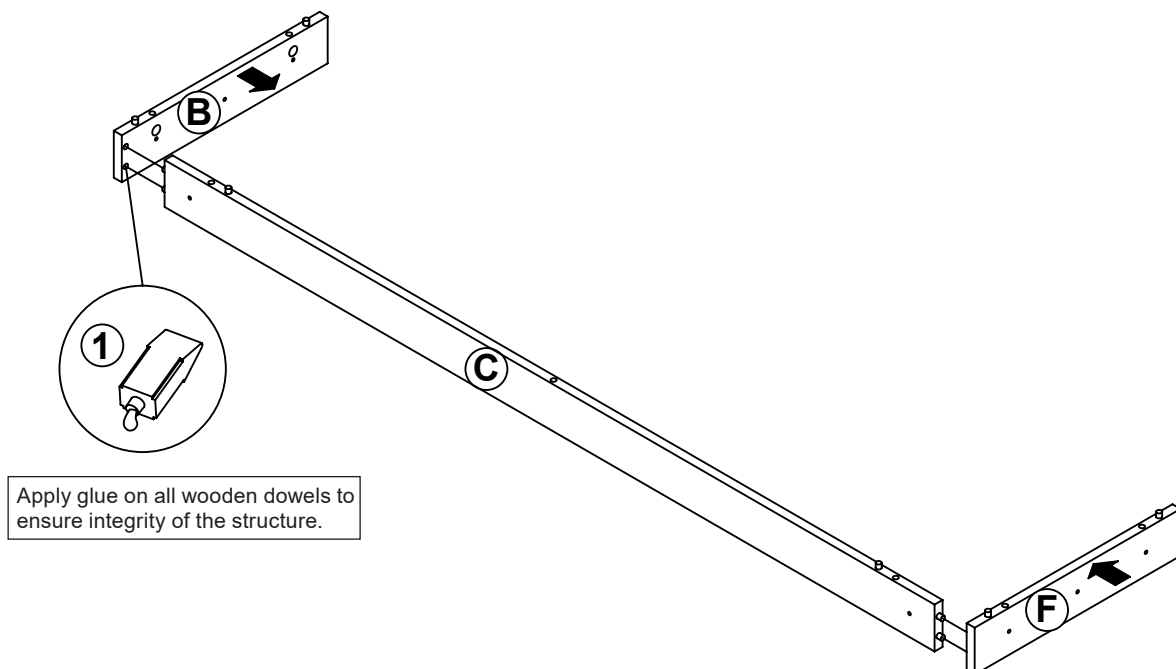
STEP 5**STEP 6**

ITEM: 701979

STEP 7

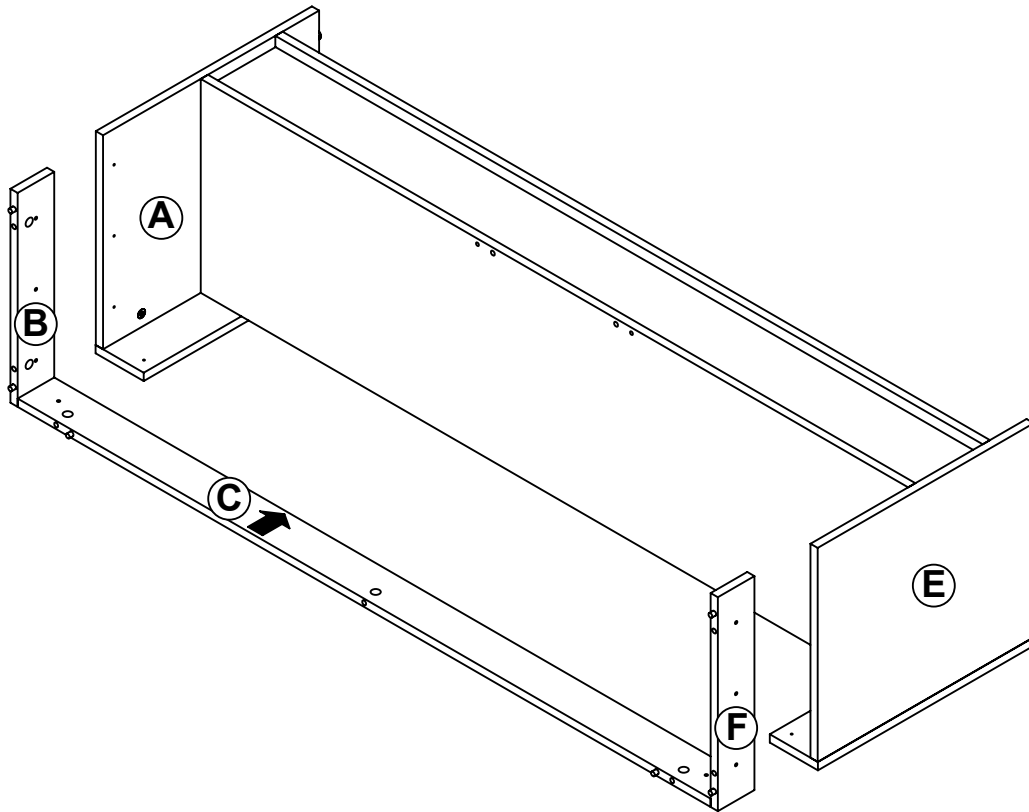


STEP 8

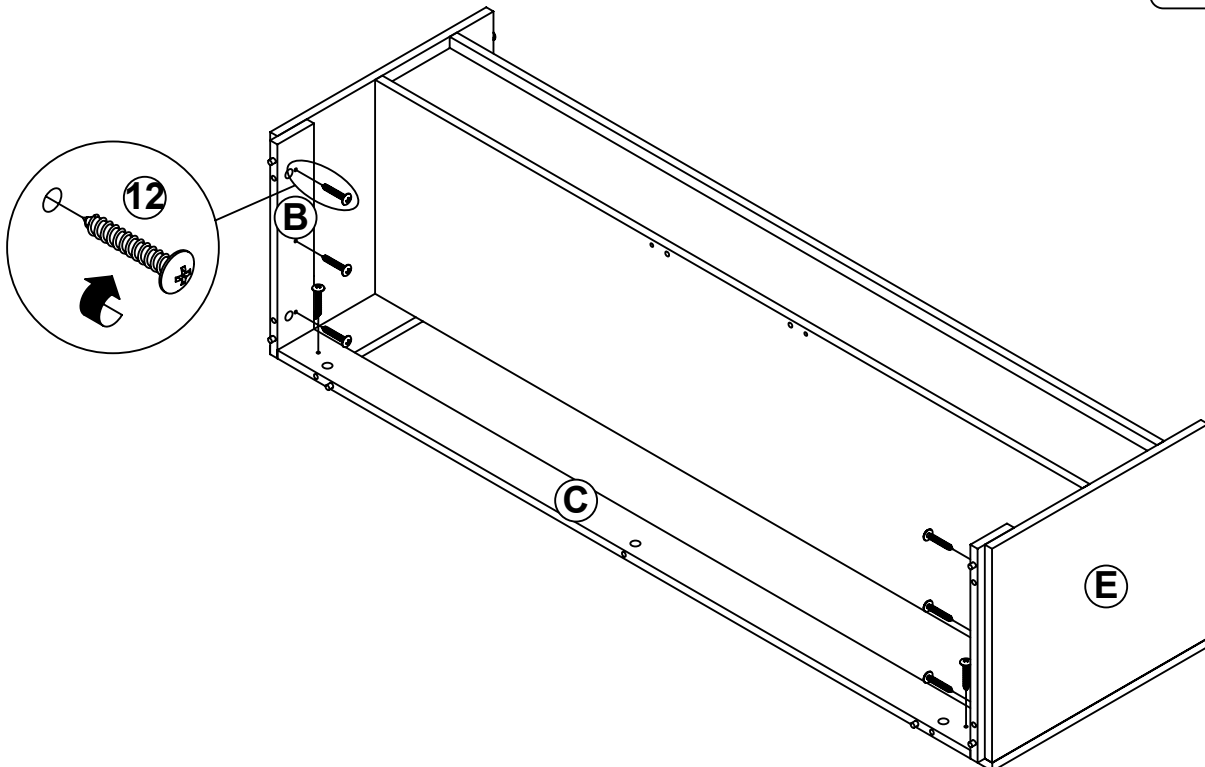
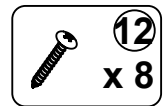


ITEM: 701979

STEP 9



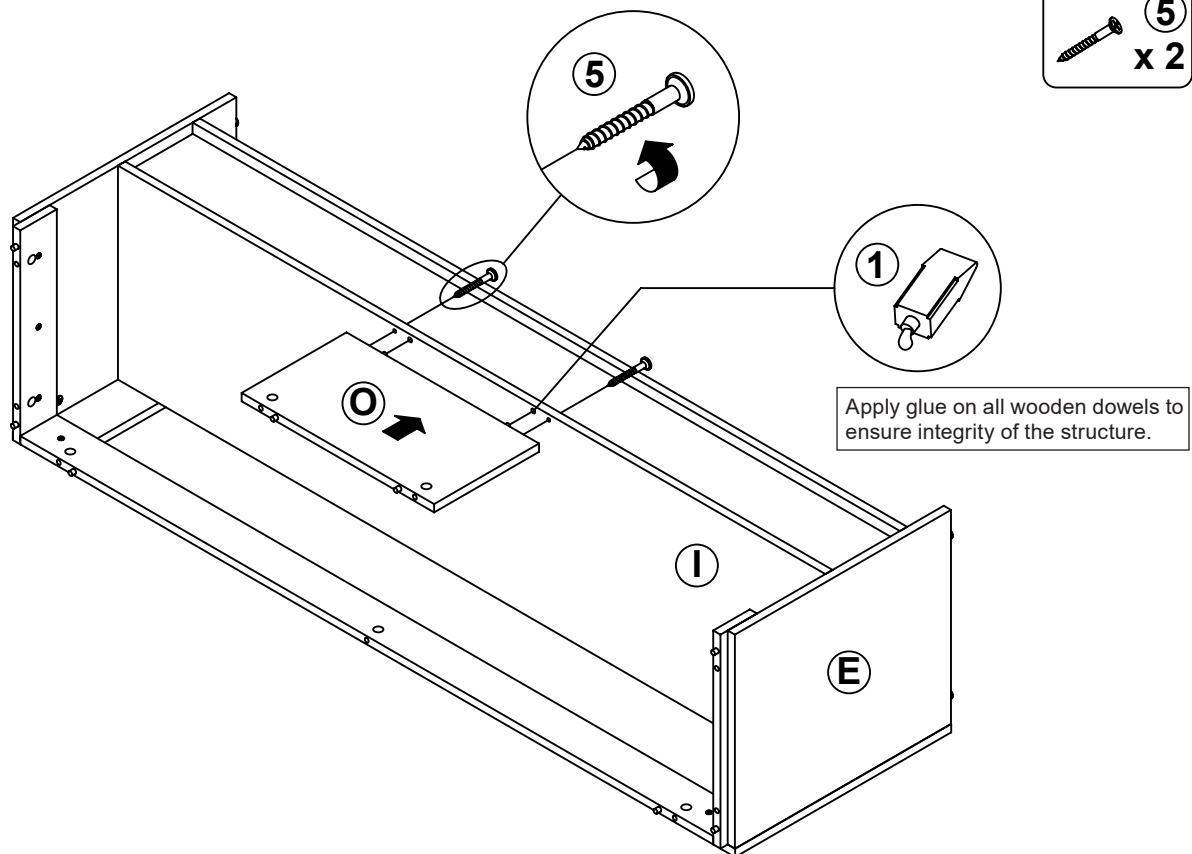
STEP 10



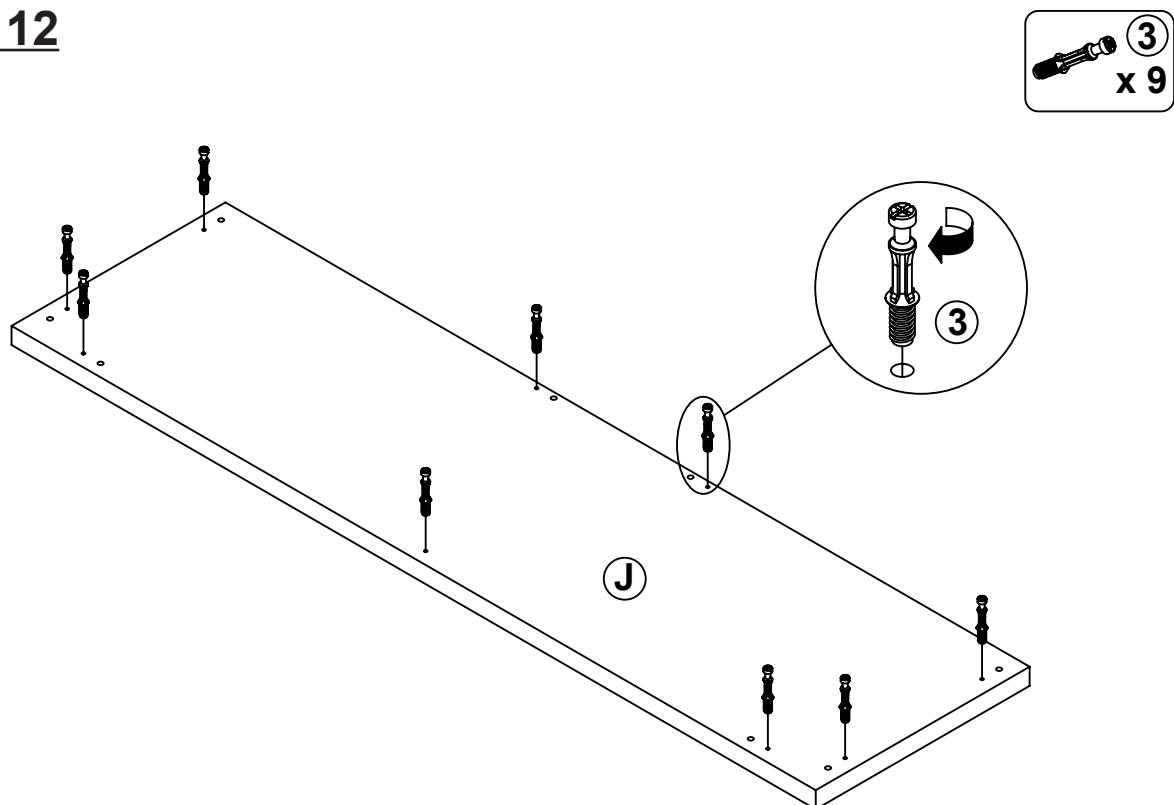
ITEM: **701979**

STEP 11

COASTER
FINE FURNITURE



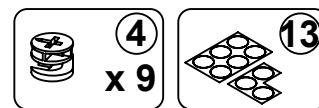
STEP 12



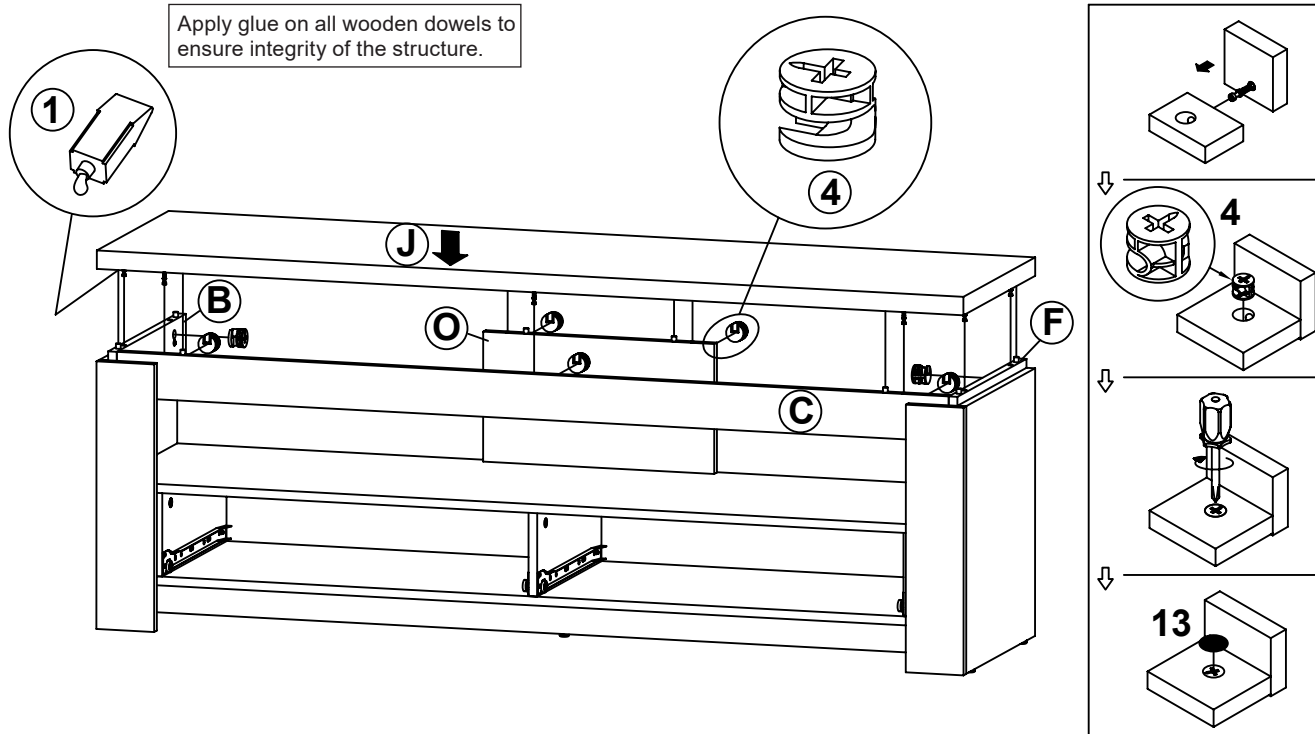
ITEM: 701979

STEP 13

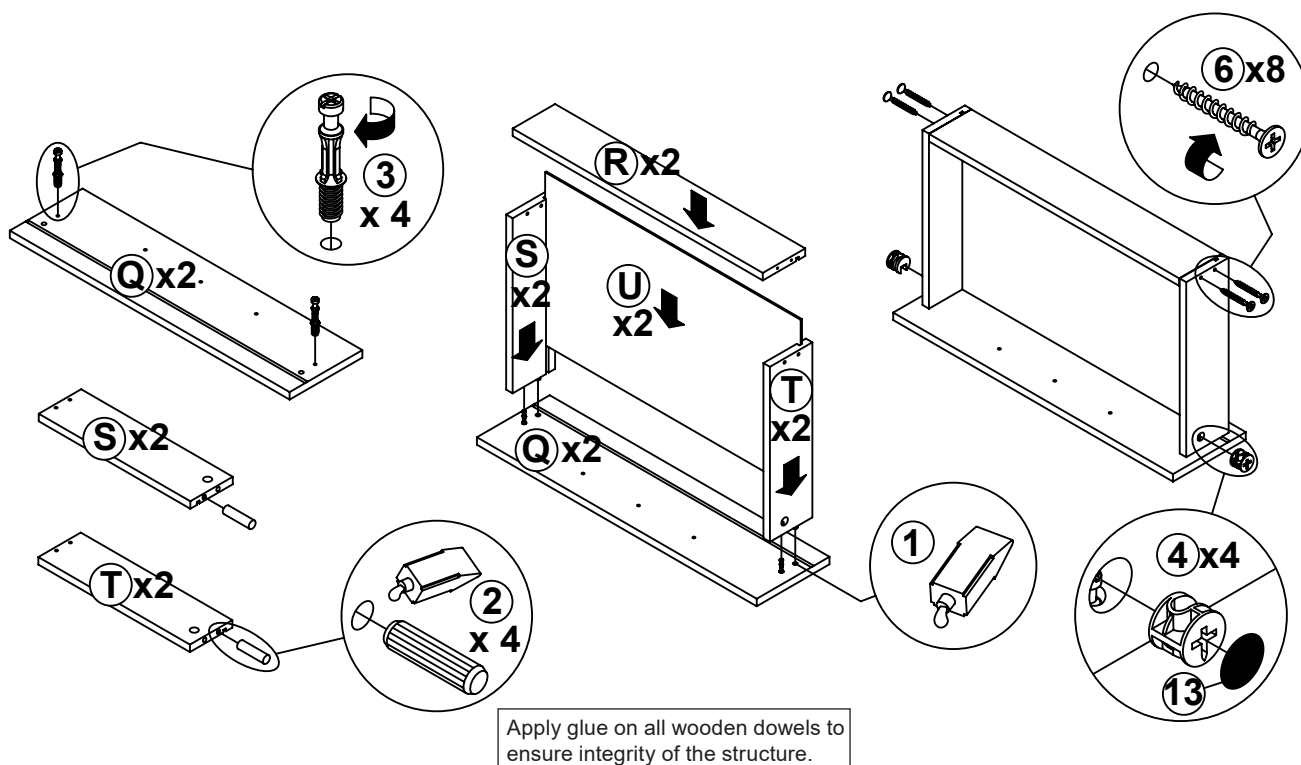
COASTER
FINE FURNITURE



Apply glue on all wooden dowels to ensure integrity of the structure.

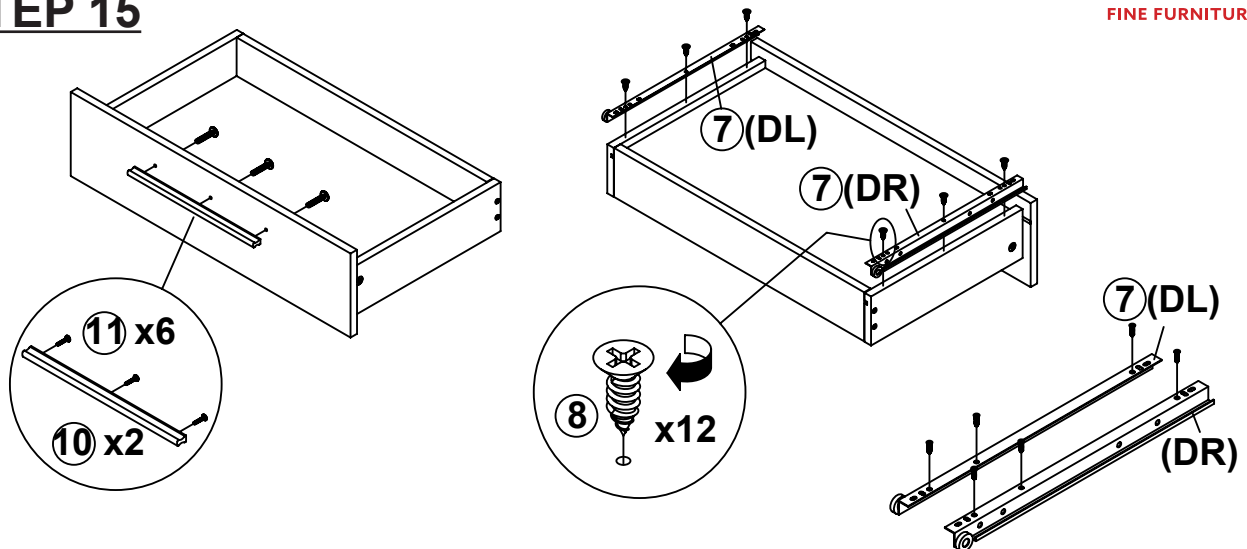


STEP 14

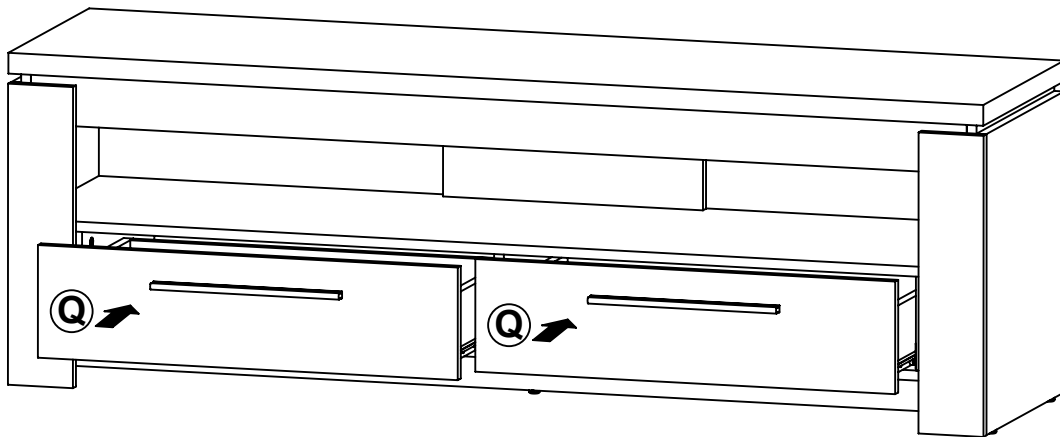


ITEM: **701979**

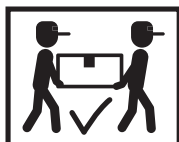
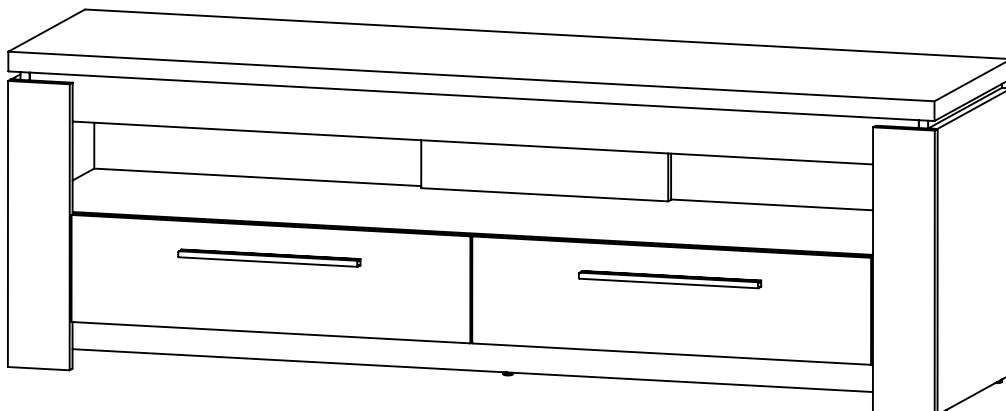
STEP 15



STEP 16

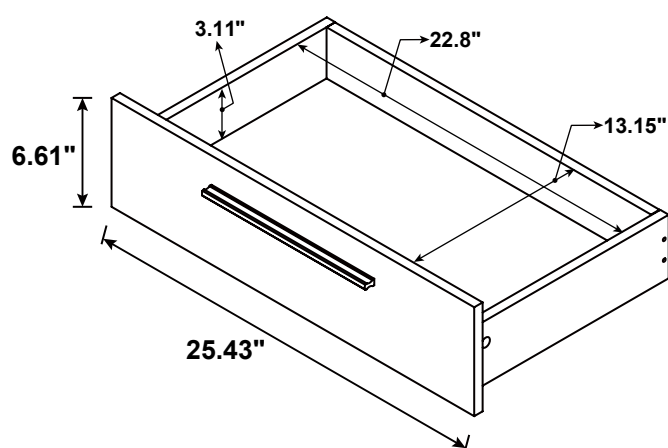
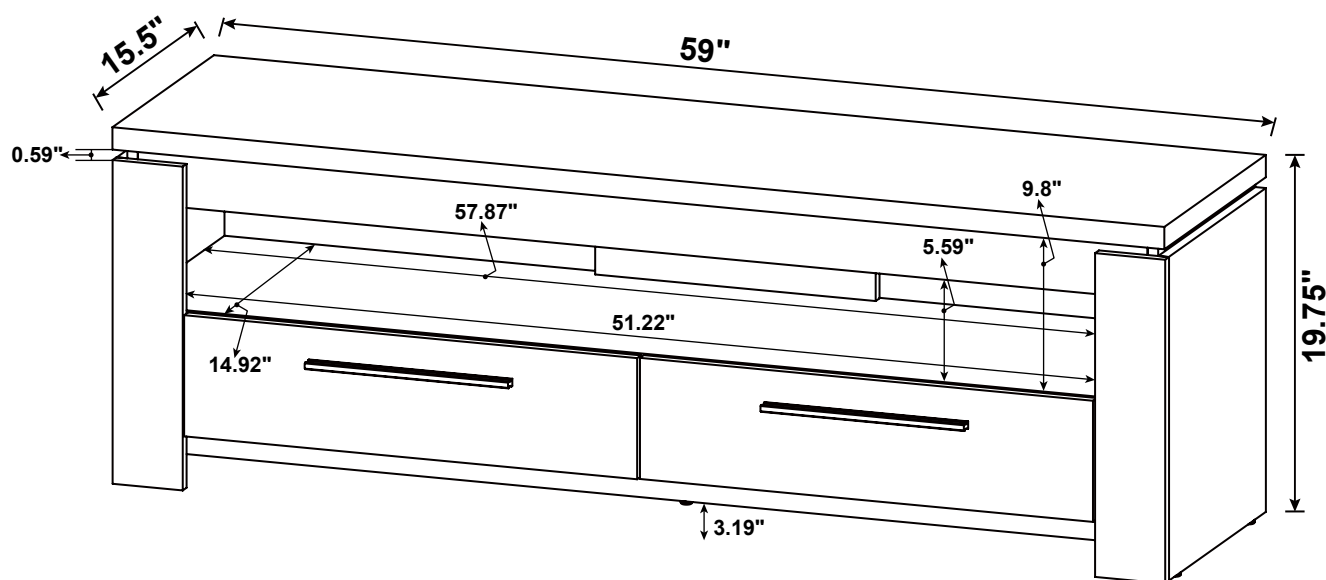


STEP 17
COMPLETE



ITEM:701979

COASTER
FINE FURNITURE



Note : Dimension tolerance $\pm 5\%$