



ASSEMBLY INSTRUCTIONS
COASTER FINE FURNITURE



Fine Furniture for every stage of life

900490
ACCENT TABLE

REVISION 0 : 09/25/2017
REVISION 1 : 05/09/2023

PAGE 1 OF 4

COASTERFURNITURE.COM

ITEM: 900490



ASSEMBLY INSTRUCTIONS

ASSEMBLY TIPS:

1. Remove hardware from box and sort by size.
2. Please check to see that all hardware and parts are present prior to start of assembly.
3. Please follow attached instructions in the same sequence as numbered to assure fast & easy assembly.



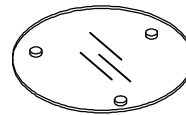
WARNING!

1. Don't attempt to repair or modify parts that are broken or defective. Please contact the store immediately.
2. This product is for home use only and not intended for commercial establishments.

ASSEMBLY TIME 25 MINUTES

PARTS IDENTIFICATION

A TOP GLASS



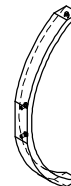
1PC

B LEG CONNECTOR



2PCS

C LEG



3PCS

HARDWARE IDENTIFICATION

1 SHORT BOLT
(3/16" x 12mm)



3PCS

2 LONG BOLT
(Ø8 x 7.5mm)



6PCS

3 SUCTION CUP
(Ø22 x 1mm)



3PCS

4 ALLEN WRENCH
(4mm)



1PC

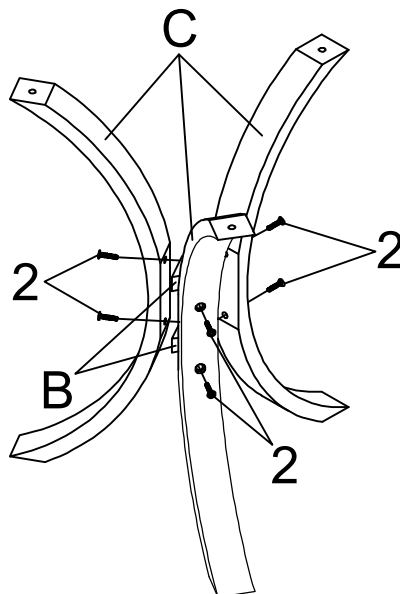
ITEM: 900490

ASSEMBLY INSTRUCTIONS

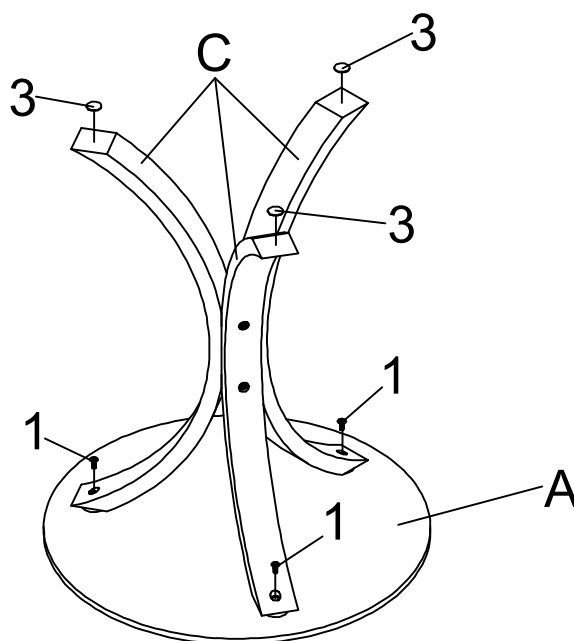


STEP 1

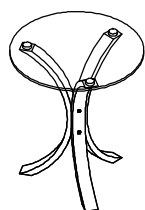
Do not tighten until each step is completed or instructed.



STEP 2



COMPLETE



How to clean Acrylic product:

Using a dry soft microfiber cloth, lightly brush off any dust.

For additional care, dampen the cloth with warm water.

For deepest cleaning, use an Acrylic cleaner.

ITEM:900490

ASSEMBLY INSTRUCTIONS



Product Size : 457 DIA X 540 H (MM)
Product Size : 18" DIA X 21 $\frac{1}{4}$"

