

72"

Item Number:

650-V72-BKO
 650-V72-BNM
 650-V72-CWH
 650-V72-UGR

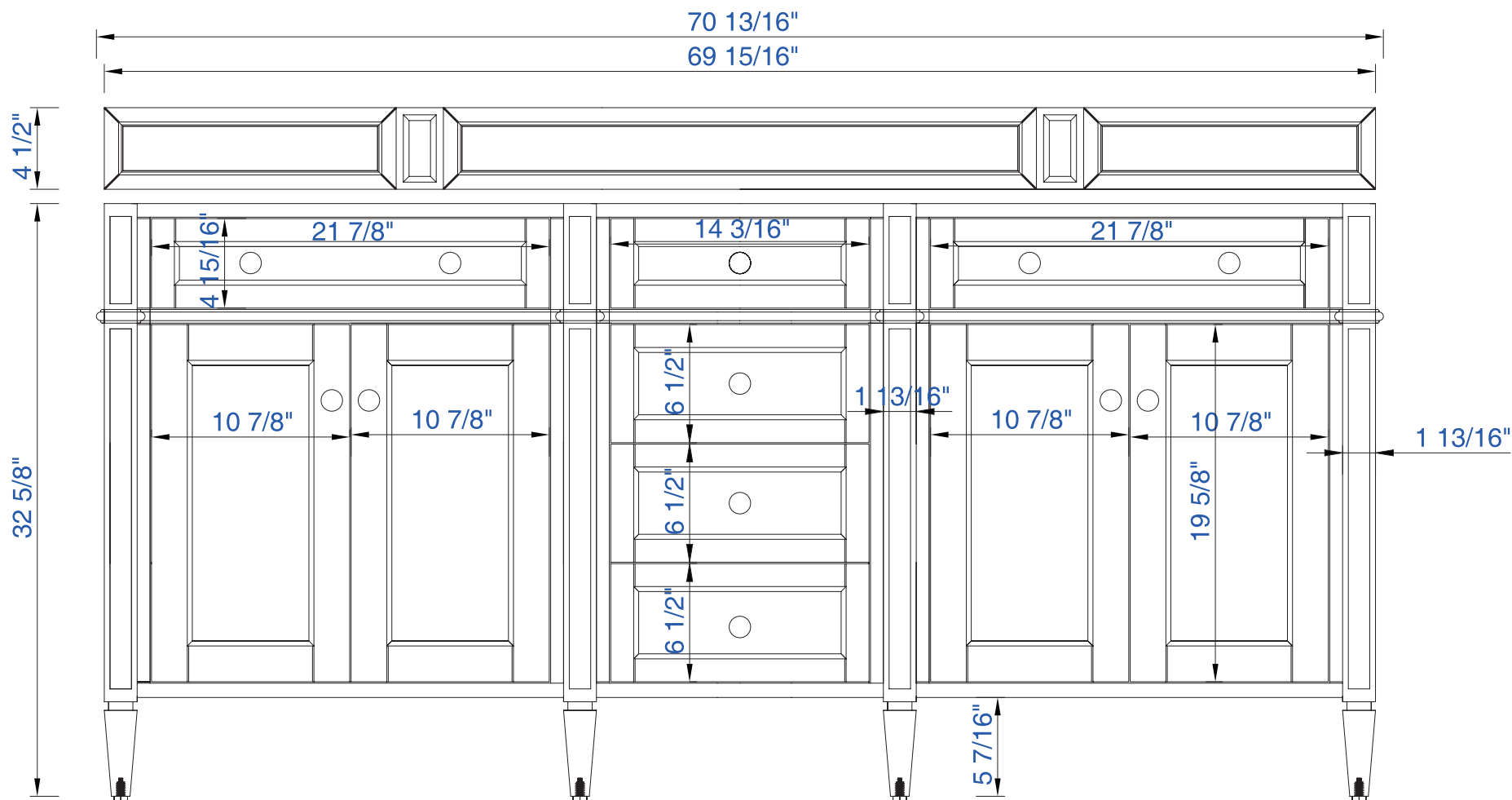
JAMES MARTIN



VANITIES

Brittany 72" Cabinet

Diagrams with Dimensions
 page 01 of 03



NOTE ONE: Countertops are not shown in these diagrams. (Cabinet Only)

NOTE TWO: Wooden Backsplash (Shown) is designed for the molding detail to align with sinks in James Martin's Optional Countertops.

Customers' own countertops and sinks may align differently.

Please consult our website for Countertop Diagrams: www.jamesmartinvanities.com

72"

Item Number:

650-V72-BKO
 650-V72-BNM
 650-V72-CWH
 650-V72-UGR

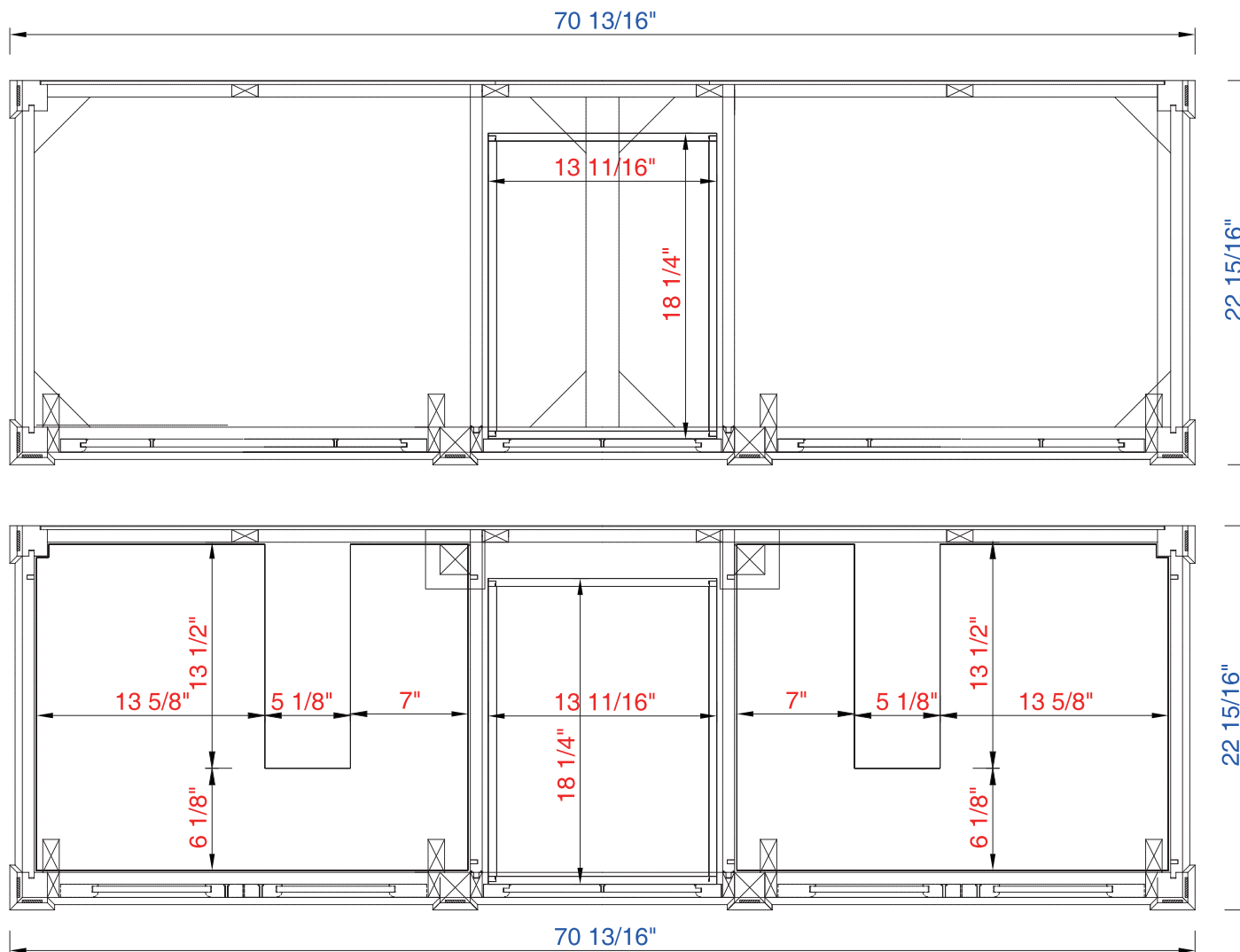
JAMES MARTIN



VANITIES

Brittany 72" Cabinet

Diagrams with Dimensions
 page 02 of 03



NOTE ONE: Countertops are not shown in these diagrams. (Cabinet Only)

NOTE TWO: Internal Shelves (Shown) are designed to align with sinks in James Martin's Optional Countertops.

Customers' own countertops and sinks may align differently, and modification may be required.

Please consult our website for Countertop Diagrams: www.jamesmartinvanities.com

72"

Item Number:

650-V72-BKO
 650-V72-BNM
 650-V72-CWH
 650-V72-UGR

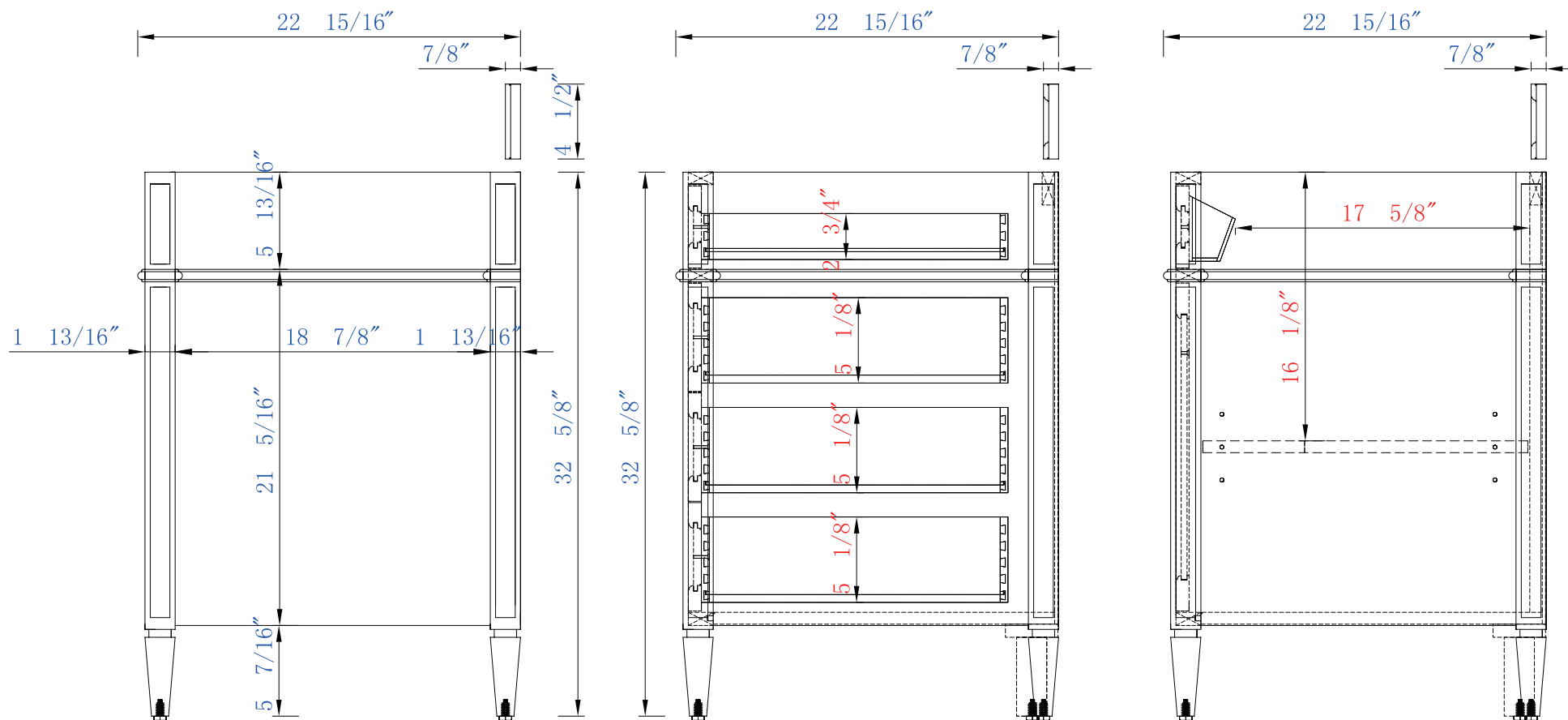
JAMES MARTIN



VANITIES

Brittany 72" Cabinet

Diagrams with Dimensions
 page 03 of 03

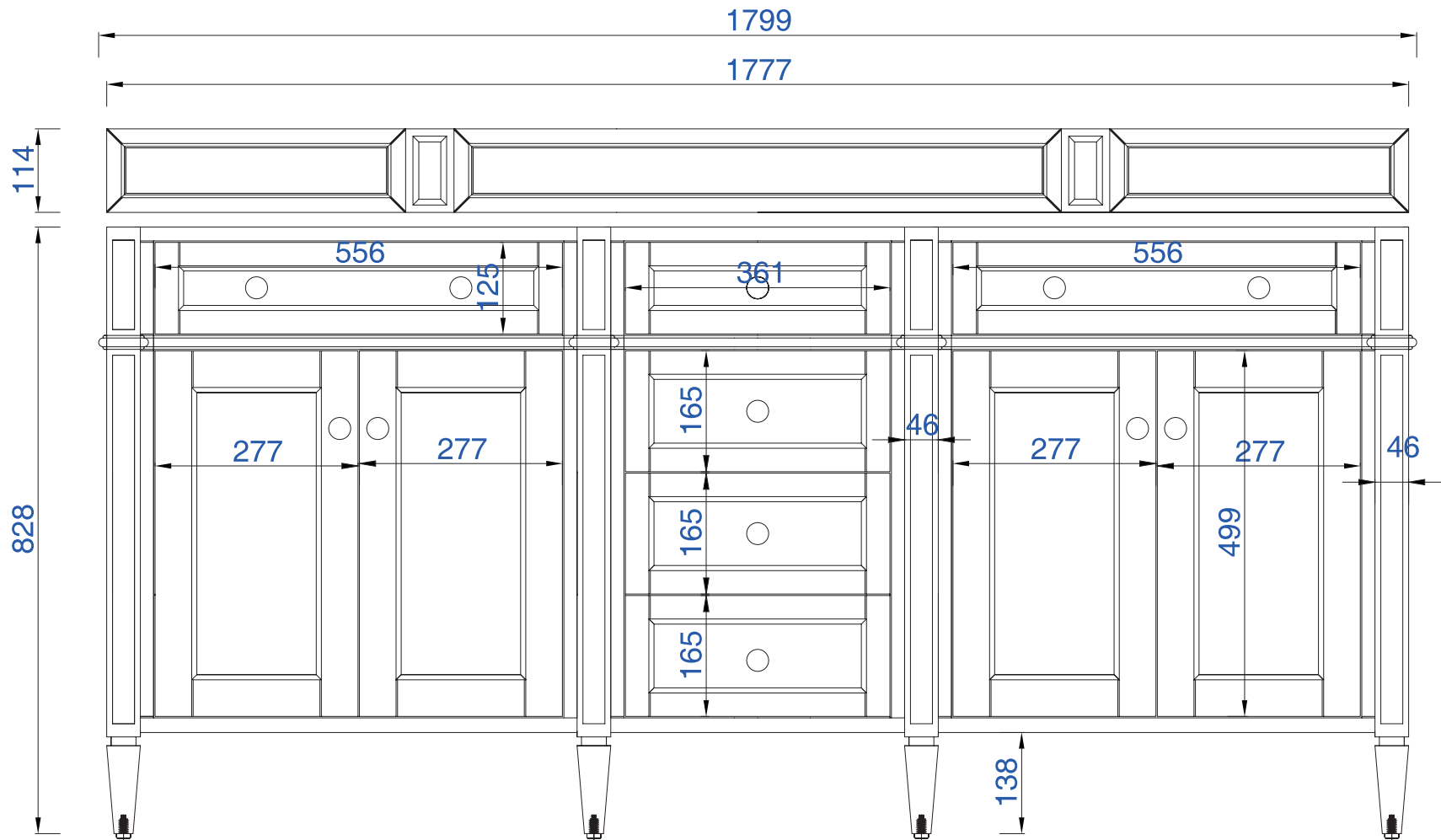


NOTE ONE: Countertops are not shown in these diagrams. (Cabinet Only)

NOTE TWO: Wooden Backsplash (Shown) is designed for the molding detail to align with sinks in James Martin's Optional Countertops.

Customers' own countertops and sinks may align differently.

Please consult our website for Countertop Diagrams: www.jamesmartinvanities.com



NOTE ONE: Countertops are not shown in these diagrams. (Cabinet Only)

NOTE TWO: Wooden Backsplash (Shown) is designed for the molding detail to align with sinks in James Martin's Optional Countertops. Customers' own countertops and sinks may align differently. Please consult our website for Countertop Diagrams: www.jamesmartinvanities.com

1828mm

Item Number:

JAMES MARTIN

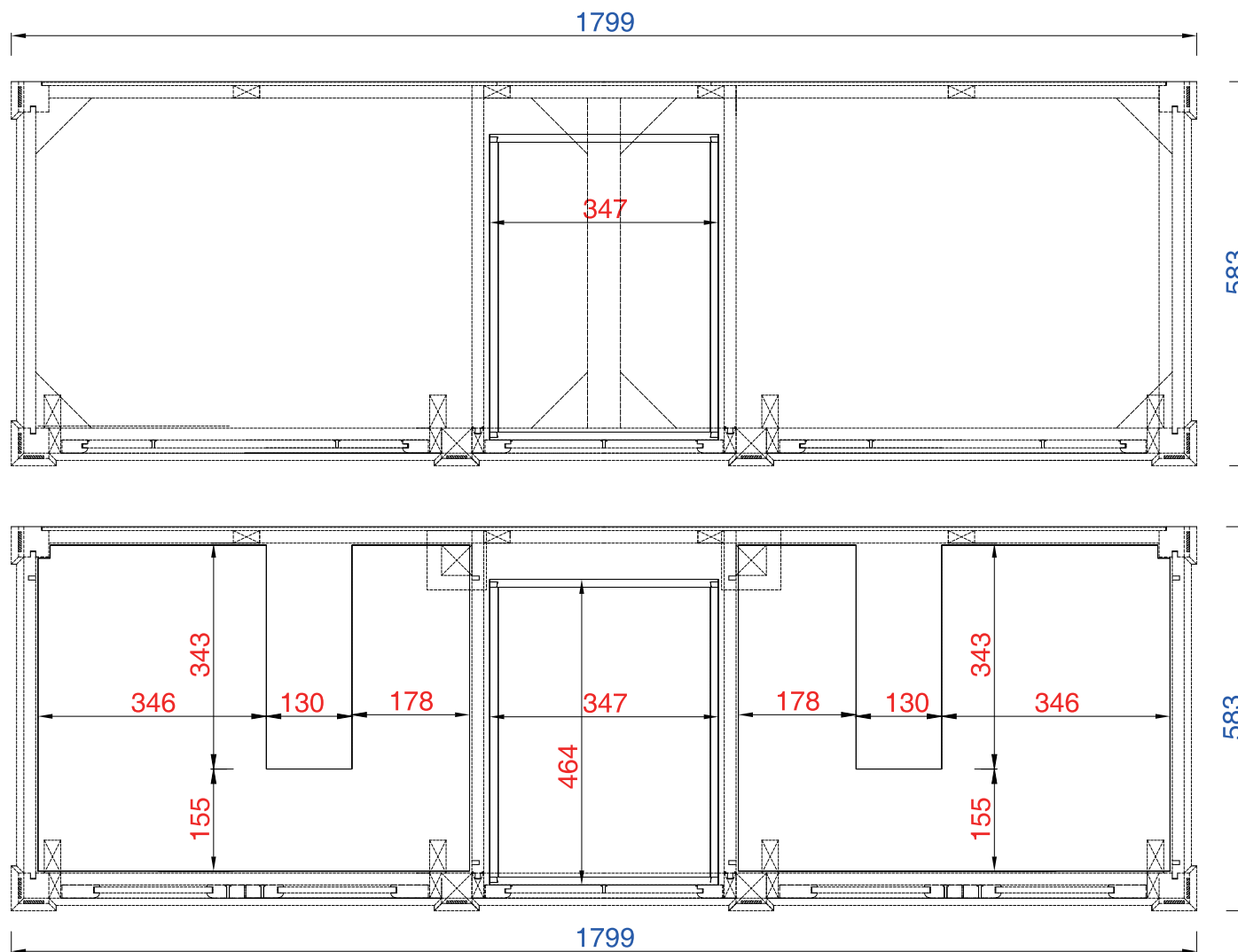
Brittany 1828mm Cabinet

650-V72-BKO
650-V72-BNM
650-V72-CWH
650-V72-UGR



VANITIES

Diagrams with Dimensions
page 02 of 03



NOTE ONE: Countertops are not shown in these diagrams. (Cabinet Only)

NOTE TWO: Wooden Backsplash (Shown) is designed for the molding detail to align with sinks in James Martin's Optional Countertops.

Customers' own countertops and sinks may align differently, and modification may be required.

Please consult our website for Countertop Diagrams: www.jamesmartinvanities.com

