



Assembly Instructions

For the following collections:
Sonoma, Monterey, Montego,
Broadway, Chelsea, Winslow

DATE STAMP	
------------	--

CALL US FIRST

1-877-PREPAC1
1-877-773-7221



Mon - Fri 7am - 4pm PST
10am - 7pm EST

- For help with assembly
- If you have received a damaged or defective part or are missing hardware.

We will process replacement parts in 2 business days or less. Parts are shipped via UPS Ground or mail.

Before you call please:

- 1) Record the following information from the shipping label on the outside of the box. You will need it for warranty purposes:
 - Ship To Name
 - Sales Order Number
- 2) Note the product model number.
- 3) Review the contents of your shipment to determine what you are missing. This unit is shipped in 2 cartons. Make sure you have received both.

Online Option:

Fill out the Parts Order Form on our website.

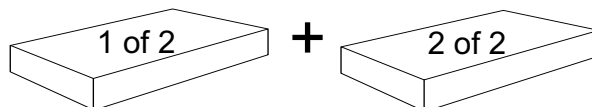
Go to www.prepacmfg.com and choose **Parts Order** from the **Support** menu



5-Drawer Chest

Model # DC-3345

This product is shipped in
2 cartons



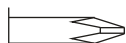
Make sure you have both cartons. Sometimes cartons shipped on the same day get separated and are delivered on different days.



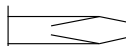
Depending on collection, the style of your product may vary from this picture.

Required Tools

Screwdrivers



Phillips Head



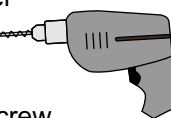
Flat Head



Hammer

Optional Tools

Using a power screwdriver will speed up assembly.



Caution

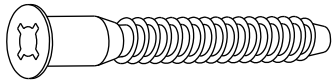
Do not over tighten any screw. The last few turns of each screw should be done very slowly or by hand.

Prepac Manufacturing Ltd.
6705 Dennett Place
Delta, BC V4G 1N4

LB-0594-R
2007-02-16

Hardware Identification

Cabinet Hardware



2" Confirmat Screws
(12)
RM-0001



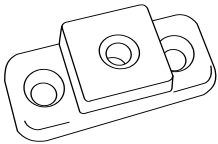
Screw Cover Caps
(12)
RM-0226 black
RM-0523 maple
RM-0008 white
RM-0620 cherry



15mm Zinc Cam
(4)
RM-0103



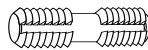
Green Twister Dowel
(4)
RM-0501



T Spacer
(20)
RM-0628



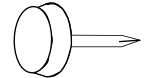
Drawer Slide Screw
(60)
RM-0074



Plastic Dowels
(11)
RM-0072

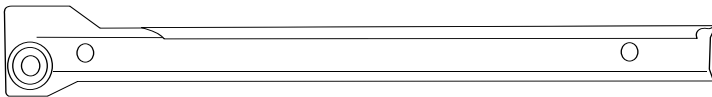


3/4" Nail
(30)*
RM-0022

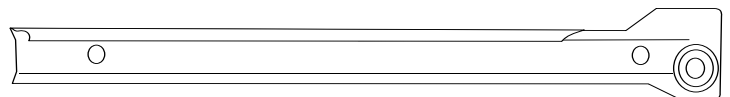


Levelling Feet
(4)
RM-0139

**More than required*

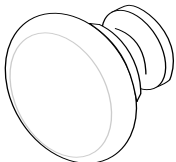


LEFT Cabinet Slide (5)



RIGHT Cabinet Slide (5)

Drawer Hardware



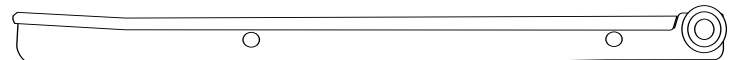
Knob
(10)
RM-0464 maple / black
RM-0625 white / cherry



#8 7/8" Machine Screw
(10)
RM-0465



1 LEFT Drawer Slide per Drawer (Total = 5)



1 RIGHT Drawer Slide per Drawer (Total = 5)

4 per drawer



#8 - 1 1/2" Hi Lo Screws
(20)
RM-0504



12mm Zinc Cam
(20)
RM-0502



Green Twister Dowel
(20)
RM-0501

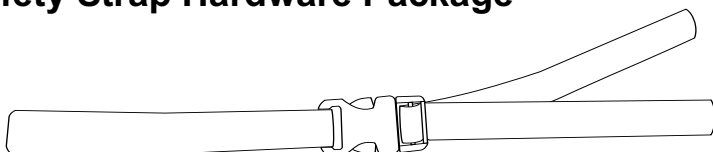


3/4" Nail
(20)
RM-0022



Drawer Slide Screw
(20)
RM-0074

Safety Strap Hardware Package

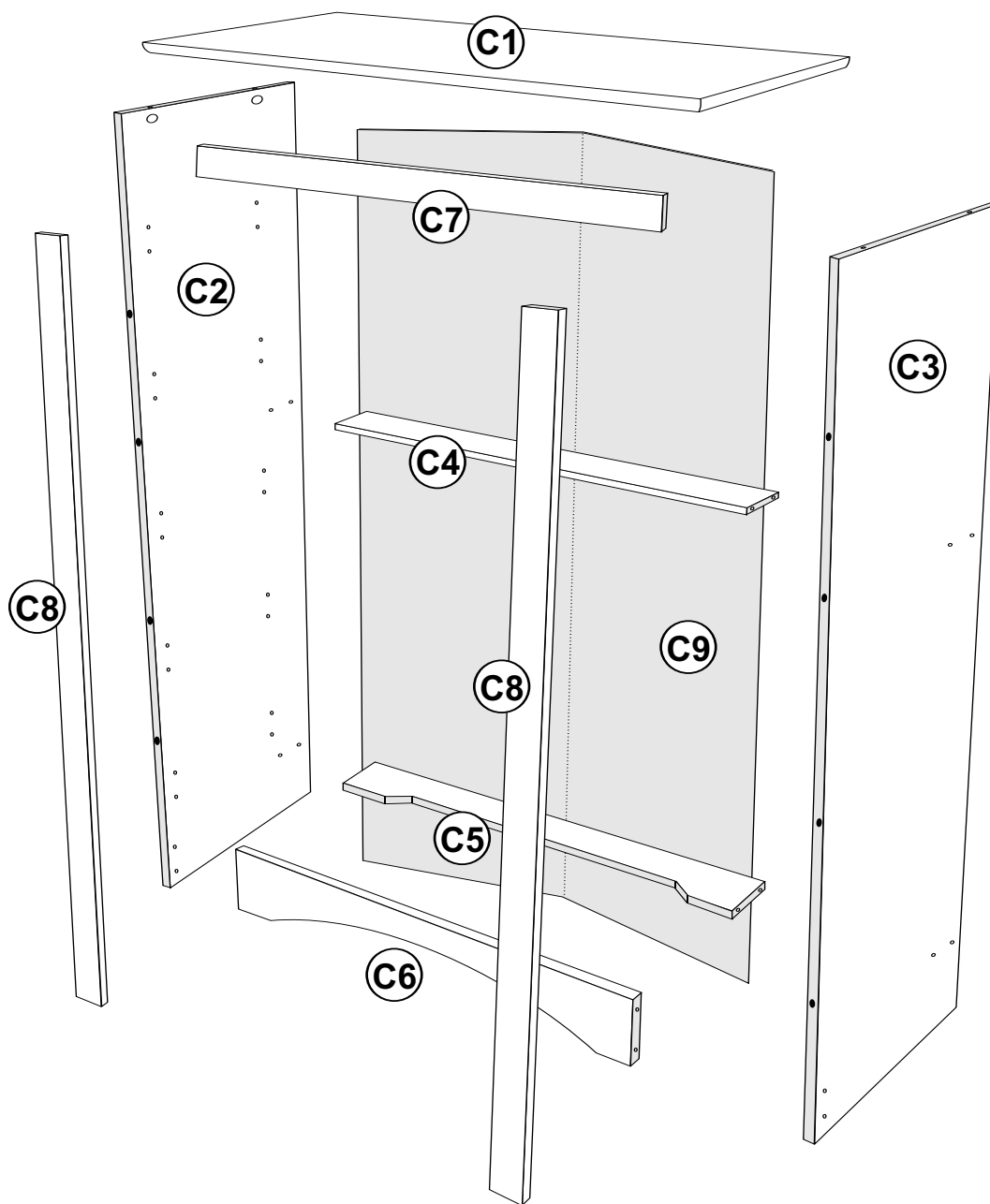


Safety Strap (1)



3/4" screw (1)

Cabinet Parts



C1

Profiled Top (1)
TP-0472 maple
TP-0412 black
TP-0402 white
TP-0492 cherry

C2

Left Side (1)
SL-0472 maple
SL-0412 black
SL-0402 white
SL-0492 cherry

C3

Right Side (1)
SR-0472 maple
SR-0412 black
SR-0402 white
SR-0492 cherry

C4

Plain Stabilizer (1)
ST-4712 maple
ST-4112 black
ST-4012 white
ST-4912 cherry

C5

Decorative Stabilizer A (1)
KR-0472 maple
KR-0412 black
KR-0402 white
KR-0492 cherry

C6

Decorative Stabilizer B (1)
ST-4711 maple
ST-4111 black
ST-4011 white
ST-4911 cherry

C7

1 $\frac{3}{4}$ " Top Molding (1)
TR-4712 maple
TR-4112 black
TR-4012 white
TR-4912 cherry

C8

1 $\frac{3}{4}$ " Side Molding (2)
TR-0474 maple
TR-0414 black
TR-0404 white
TR-0494 cherry

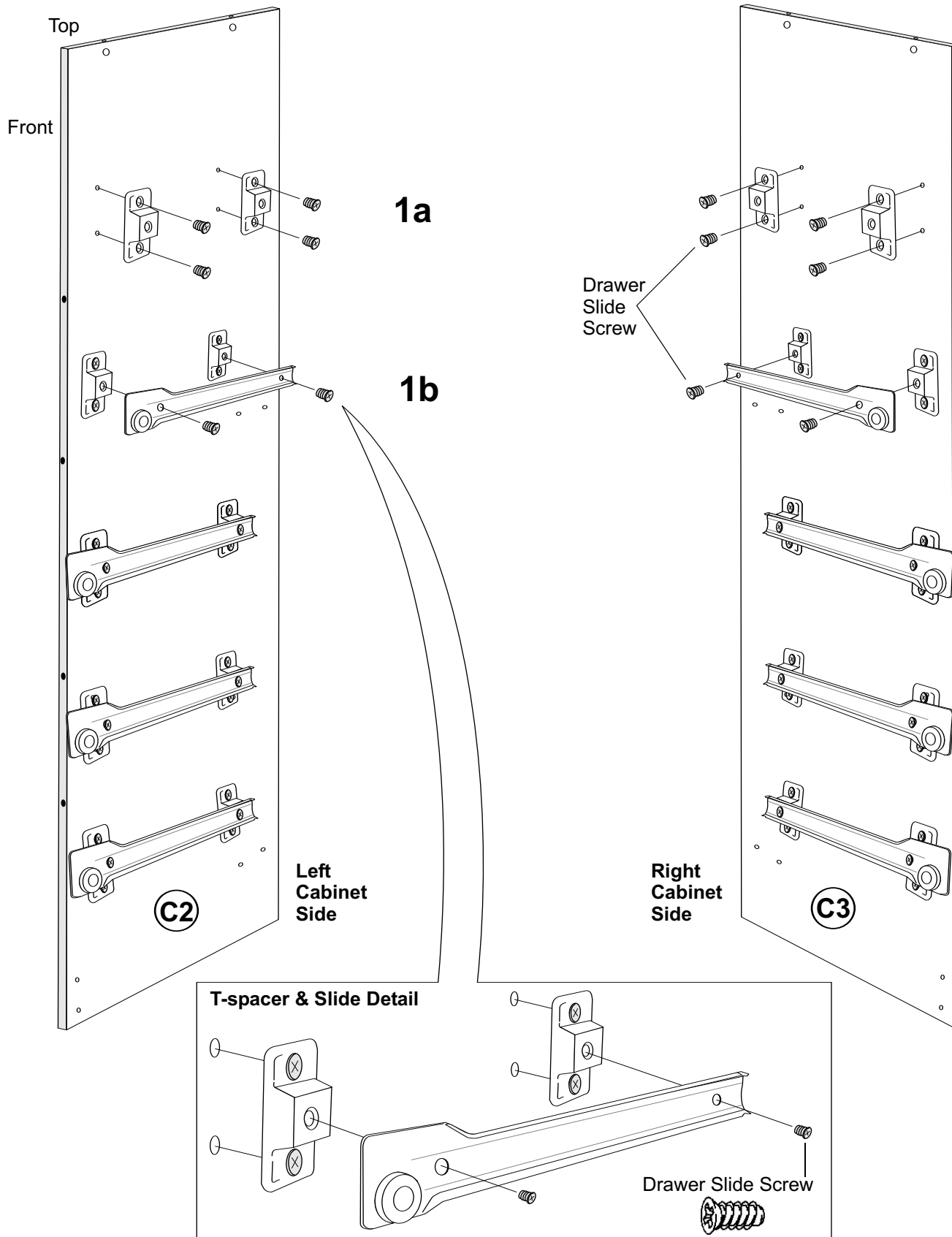
C9

Foldable
 Backer (1)
BB-0106

STEP 1 Estimated Time: 15 - 25 minutes

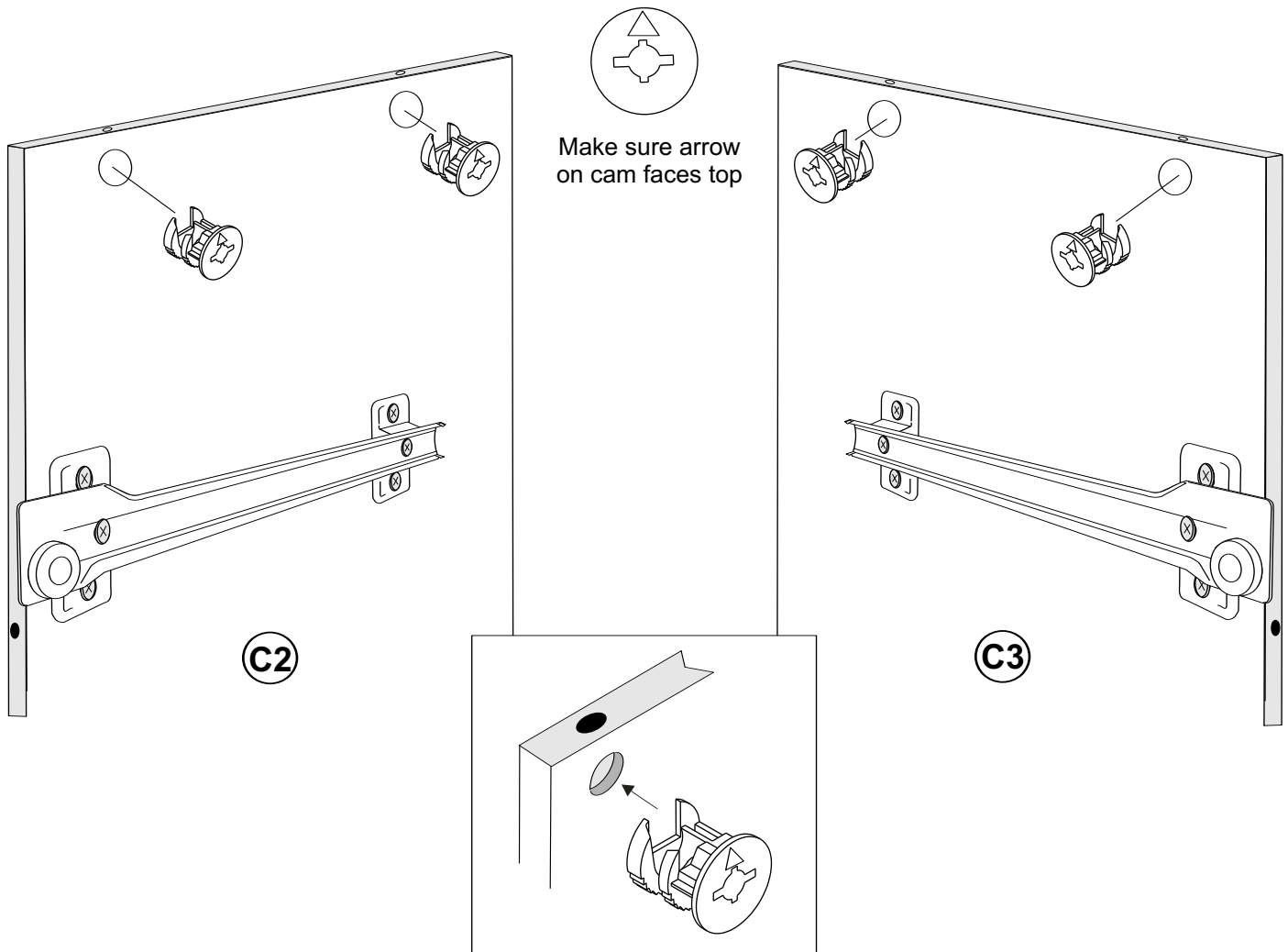
1a Attach T-spacers to left and right cabinet sides using drawer slide screws

1b Then, attach metal cabinet slides to T-spacers using drawer slide screws



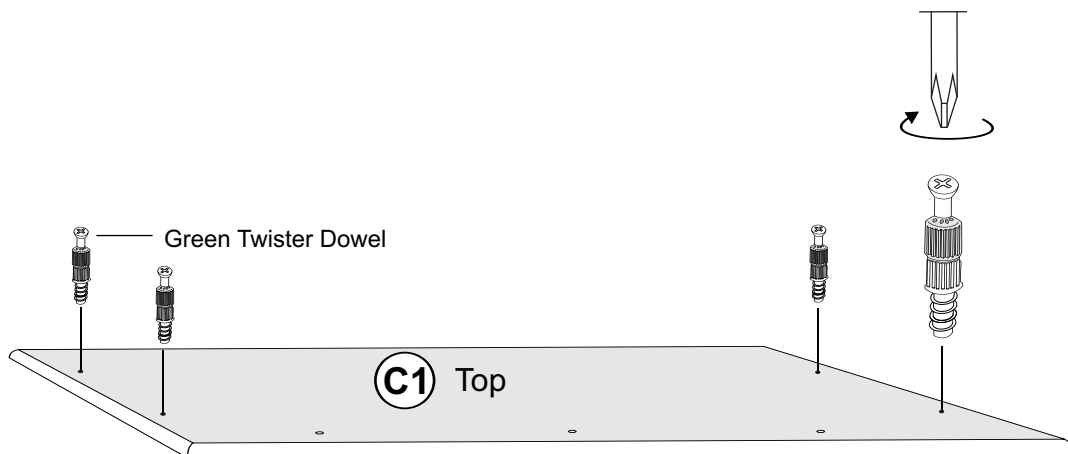
STEP 2 Estimated Time: 1 minute

Insert cams into holes on the top of each side.



STEP 3 Estimated Time: 2 minutes

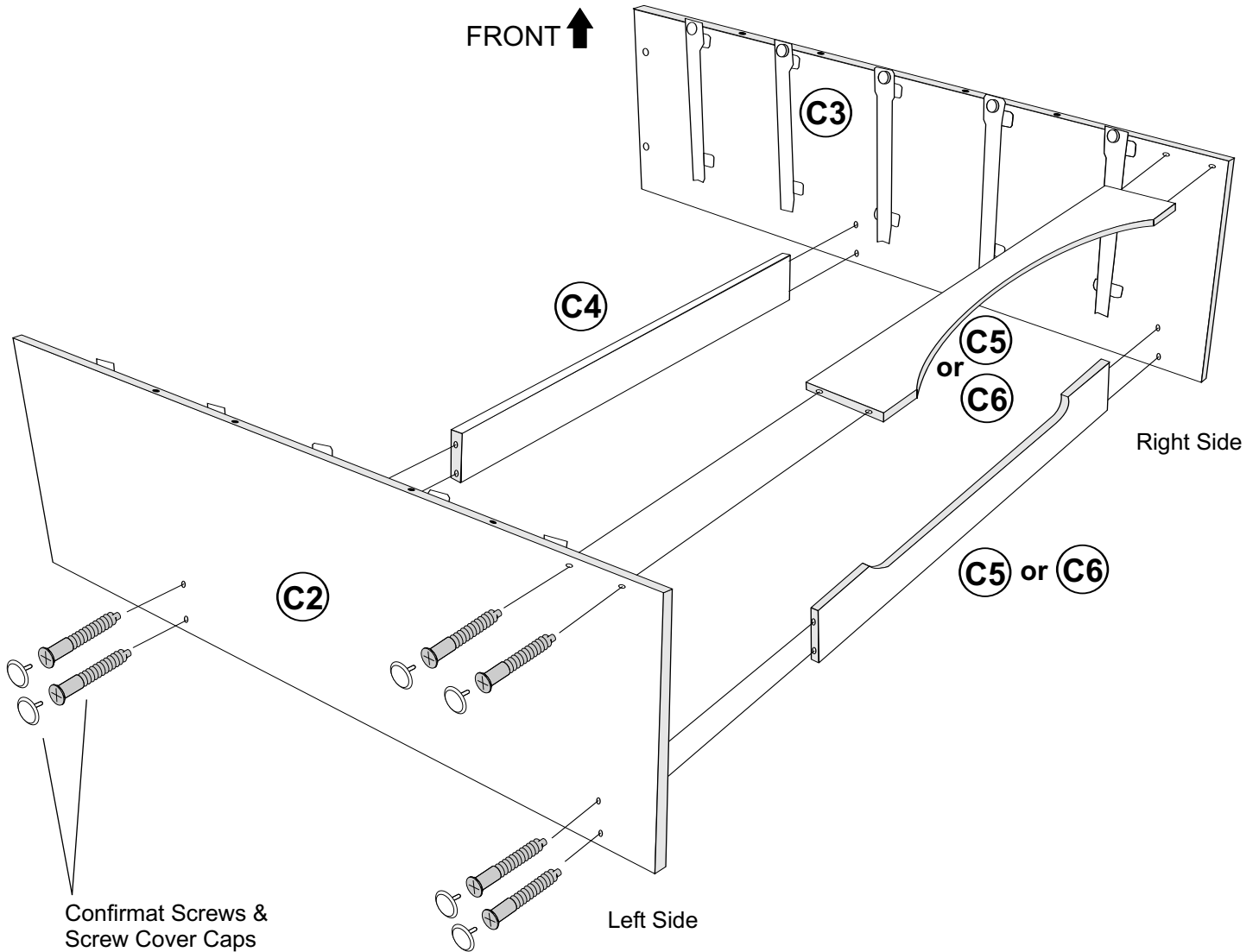
Screw green twister dowels into the underside of the top



STEP 4 Estimated Time: 10 minutes

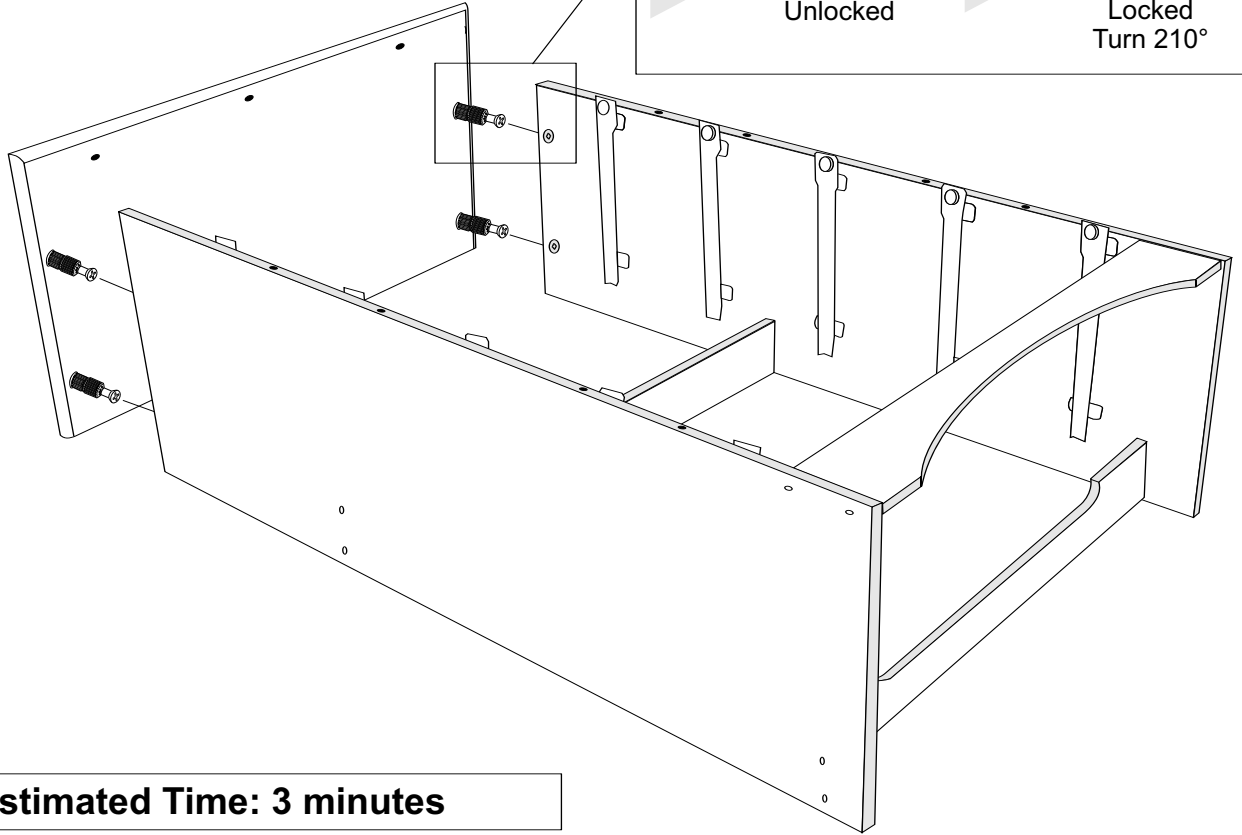
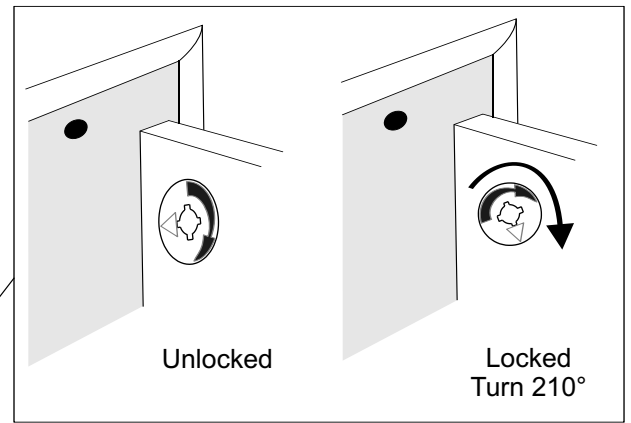
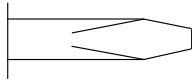
Attach all 3 stabilizers to left and right sides using Confirmat screws.
Insert screw cover caps to finish.

Decorative stabilizers **C5** & **C6** are interchangeable. Please choose the style that you prefer and attach it to the front.



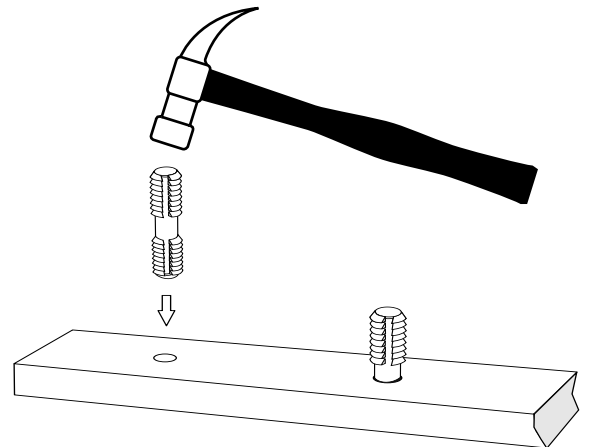
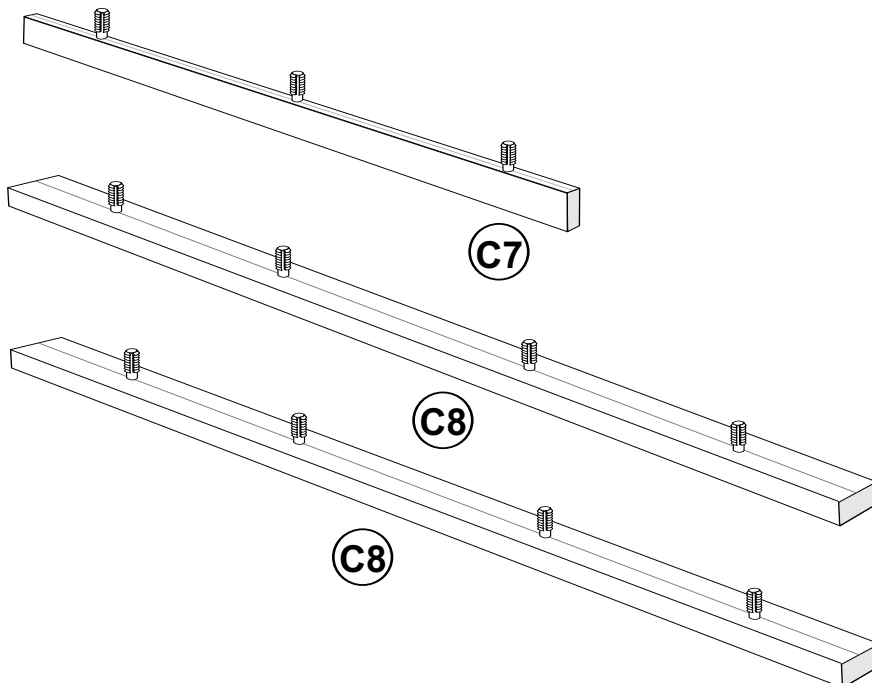
STEP 5 Estimated Time: 2 minutes

Attach top to sides and lock cams using a flat head screwdriver



STEP 6 Estimated Time: 3 minutes

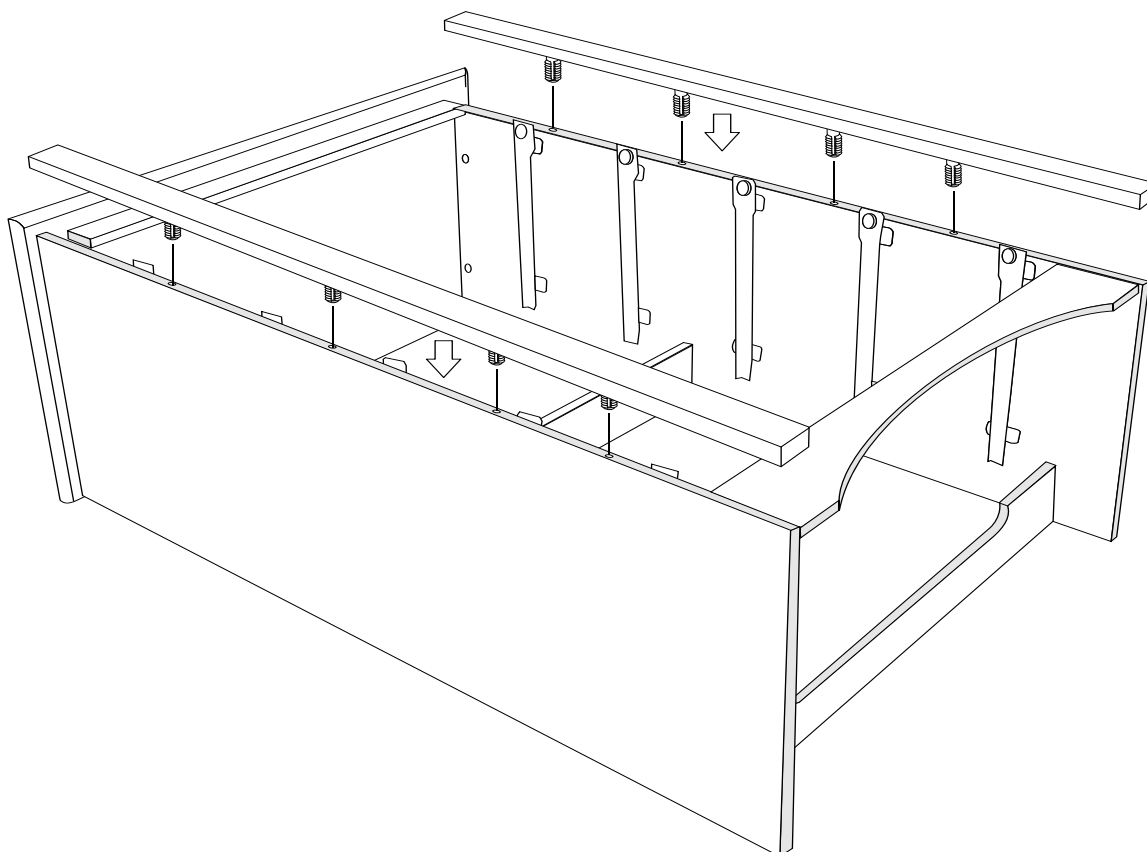
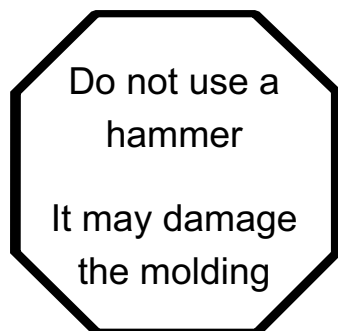
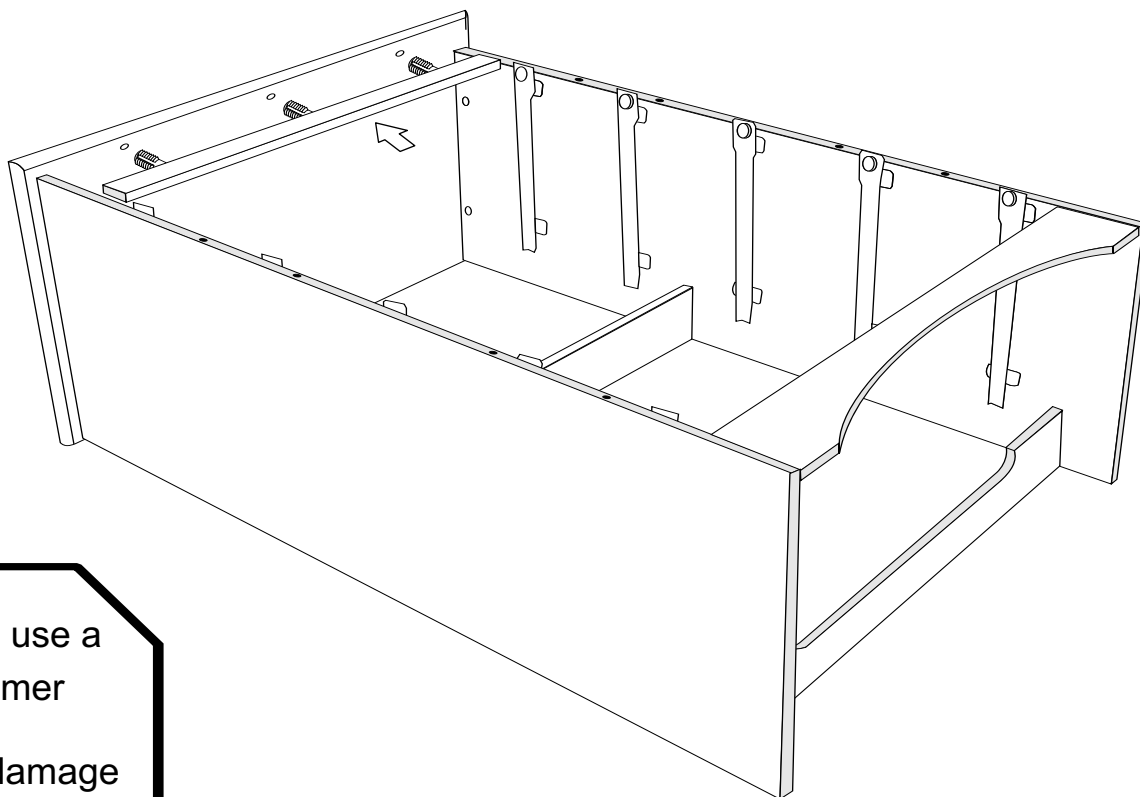
Hammer plastic dowels halfway into side and top moldings



STEP 7 Estimated Time: 3 minutes

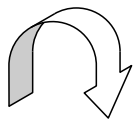
Attach top & side moldings.

Using your hands, apply even pressure to moldings and press firmly



STEP 8 Estimated Time: 4 minutes

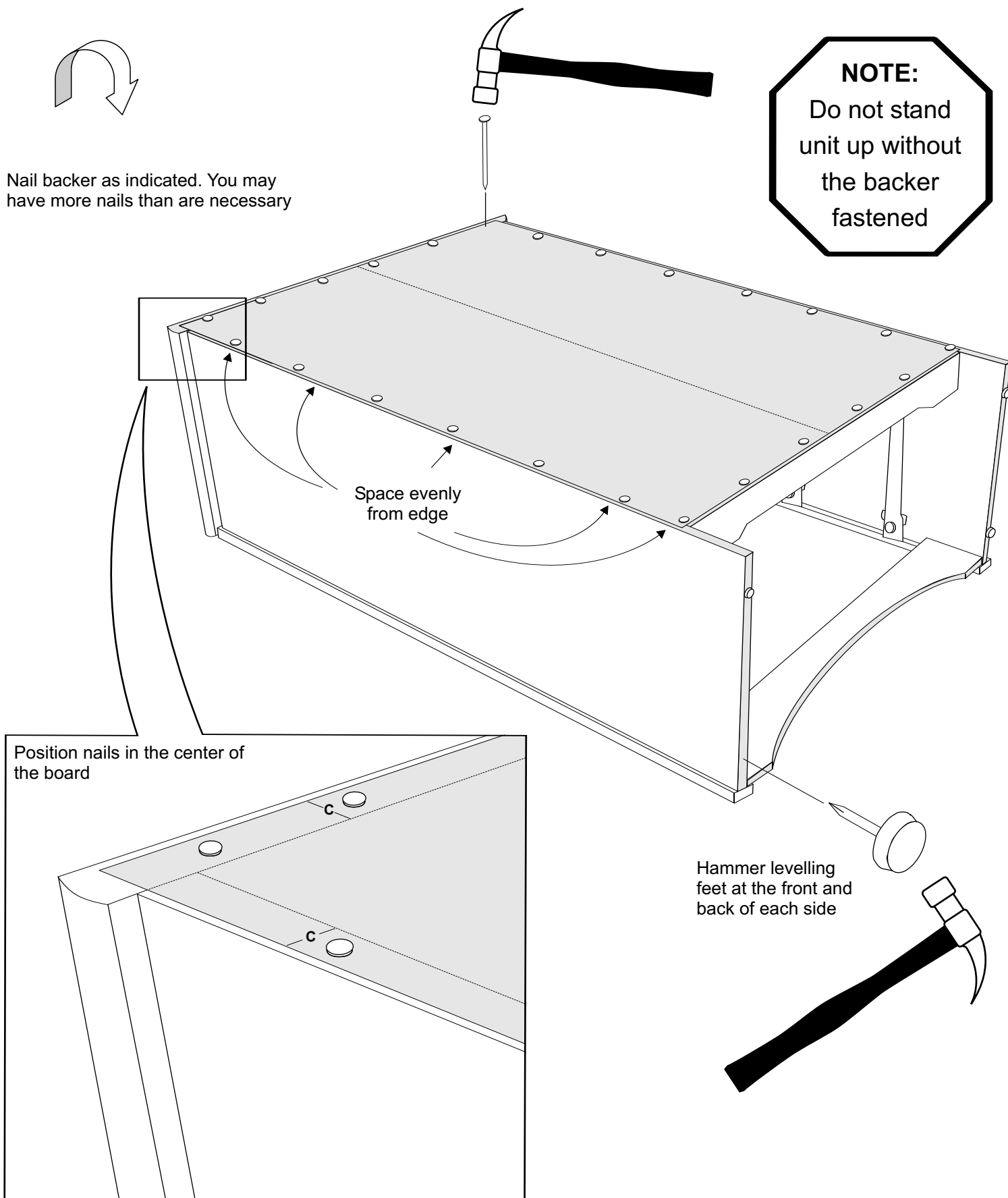
Carefully turn chest over and attach backer and levelling feet



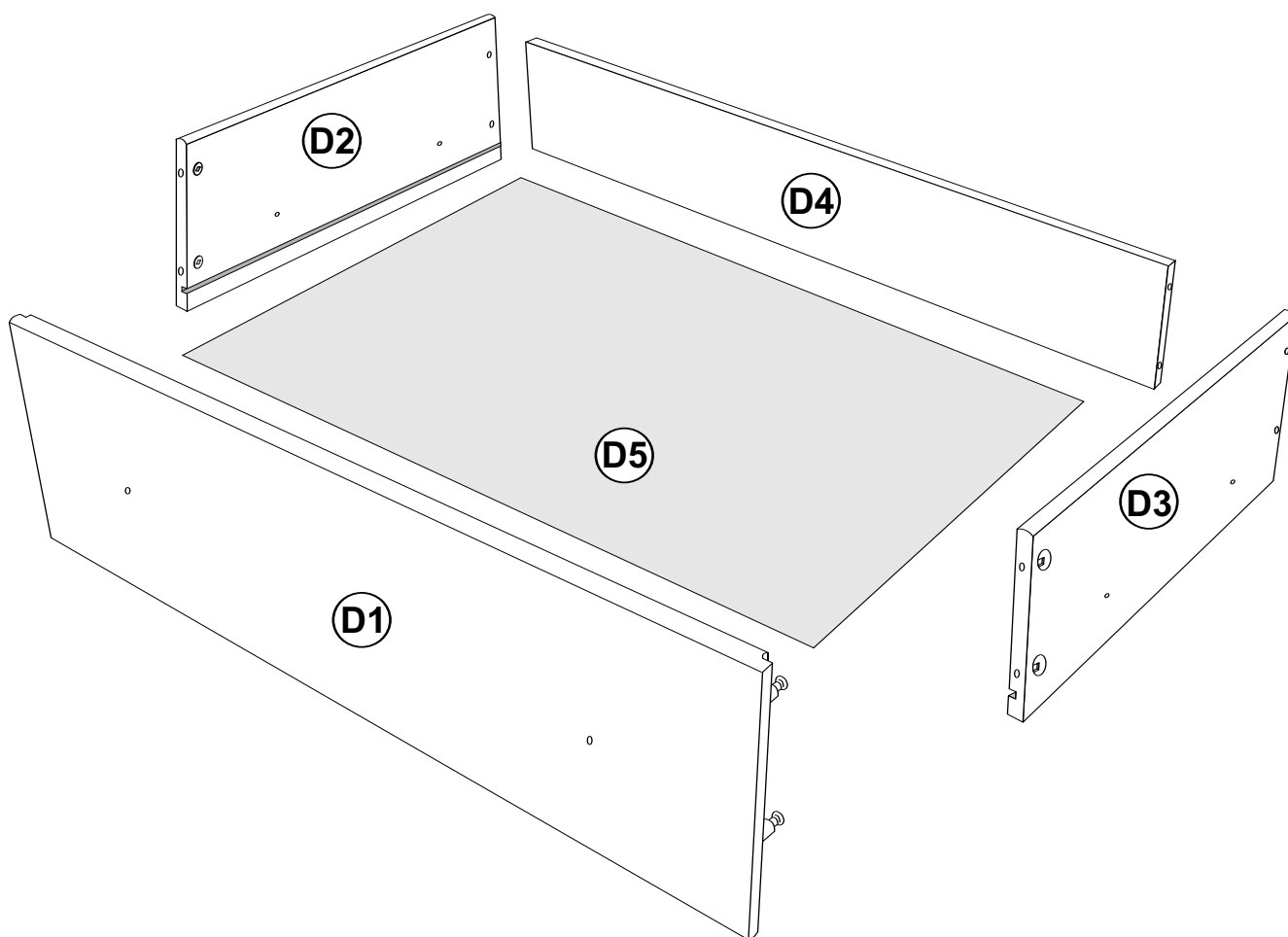
Nail backer as indicated. You may have more nails than are necessary

NOTE:

Do not stand unit up without the backer fastened



Drawer Parts Identification



D1

Drawer Front (5)
DF-0476 maple
DF-0416 black
DF-0406 white
DF-0496 cherry

D2

Left Drawer Side (5)
DS-0412-L
 Plywood

D3

Right Drawer Side (5)
DS-0412-R
 Plywood

D4

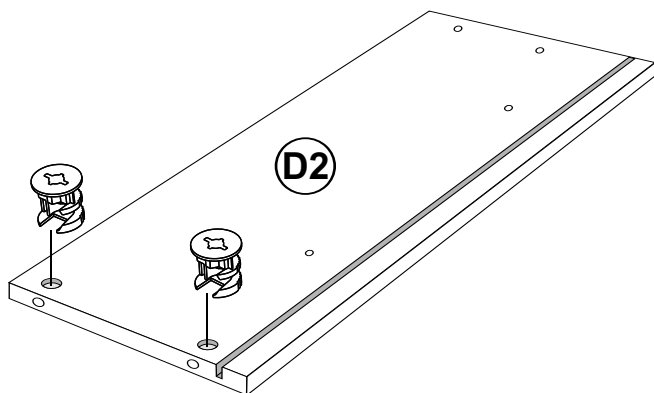
Drawer Back (5)
DK-0415
 unfinished

D5

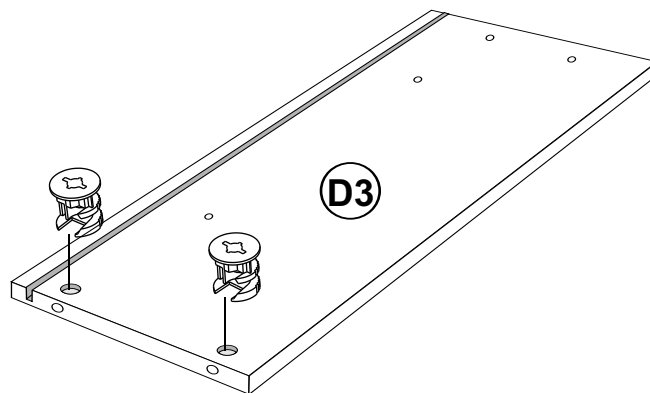
Drawer Bottom (5)
DB-0415
 unfinished

STEP 9 Estimated Time: 5 minutes PER DRAWER

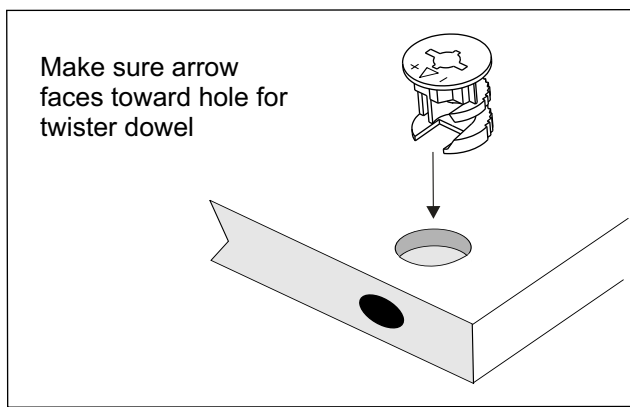
9a Insert cams into drawer sides



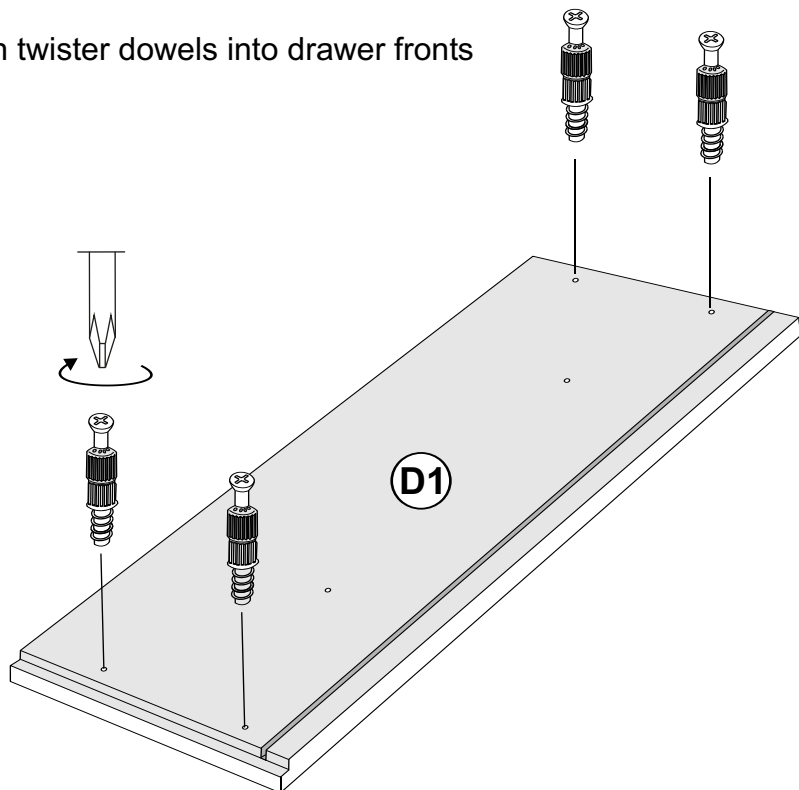
Left Drawer Side



Right Drawer Side

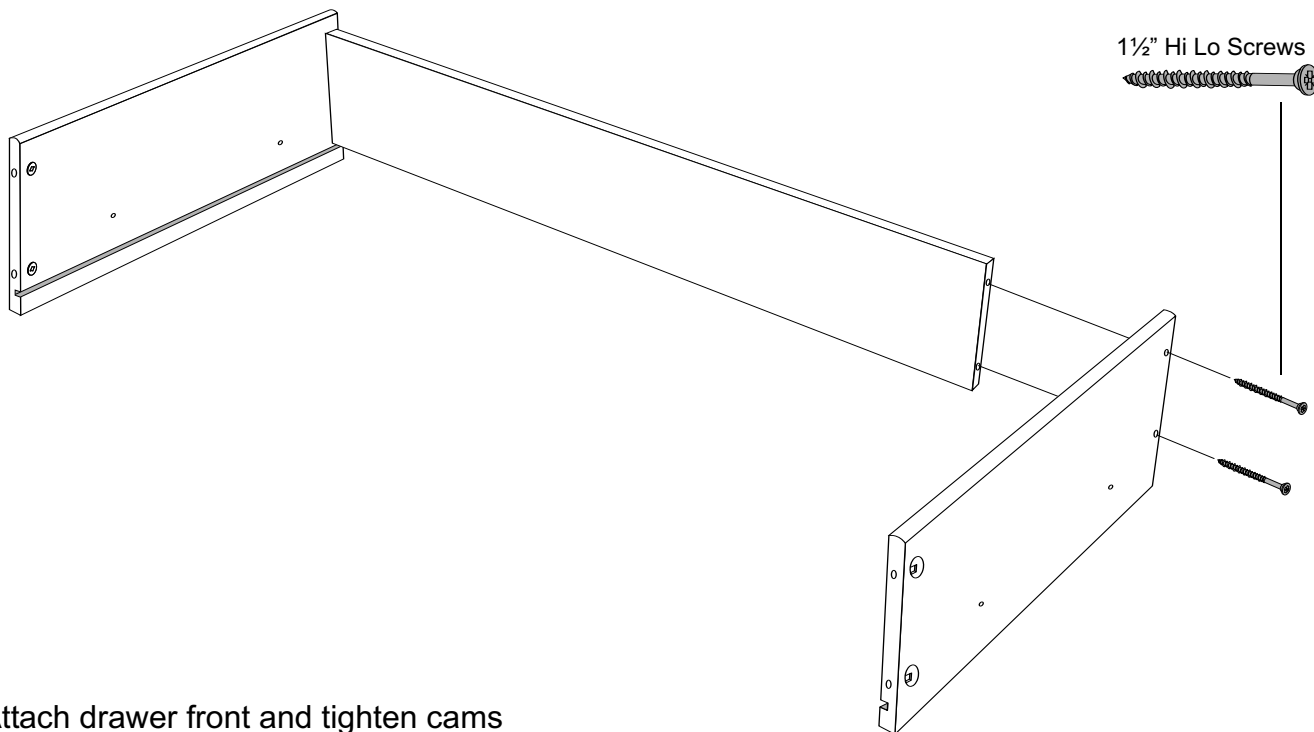


9b Screw green twister dowels into drawer fronts

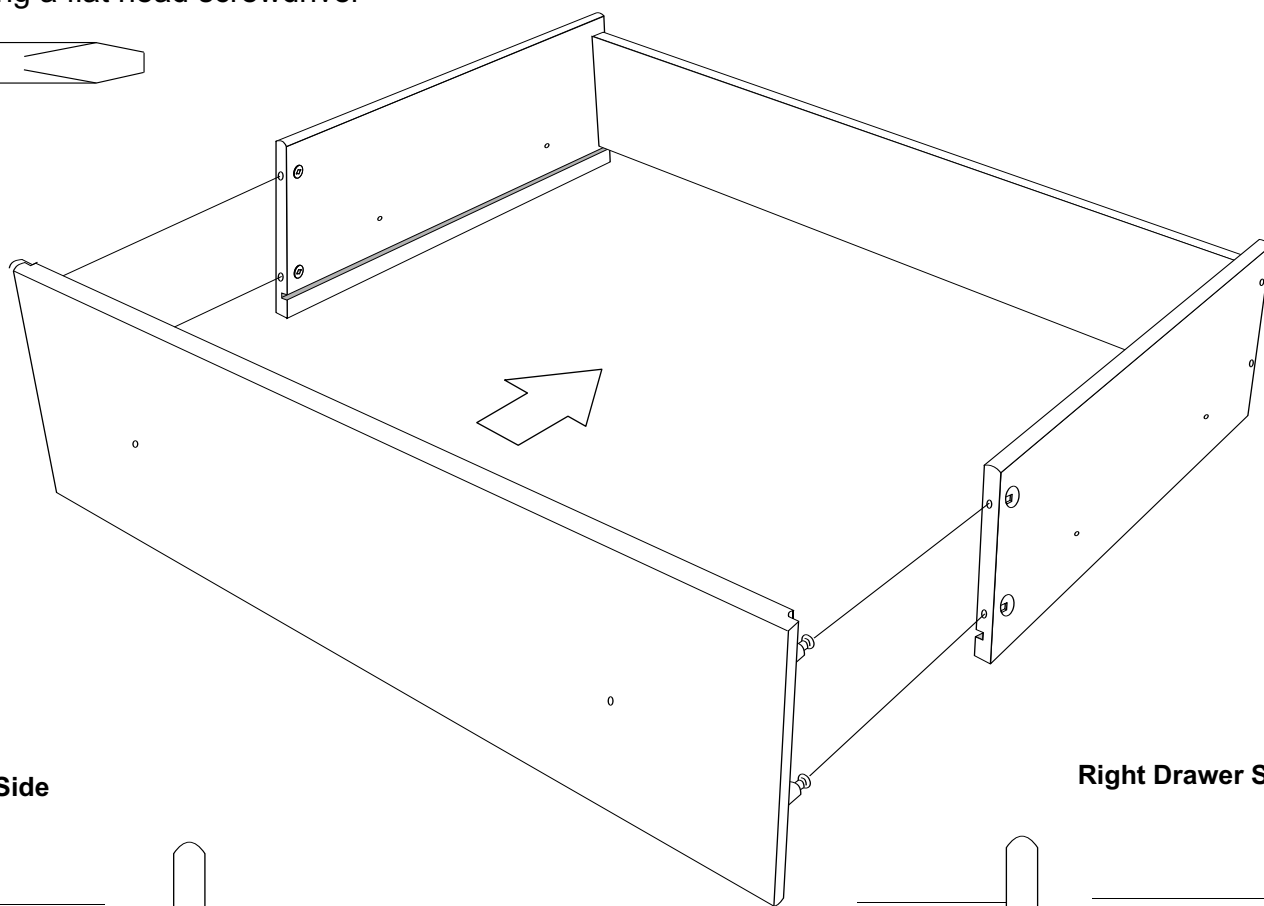
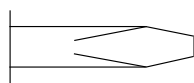
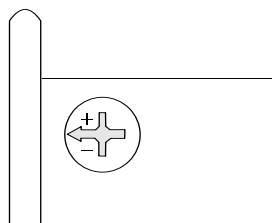


9c

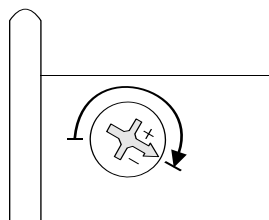
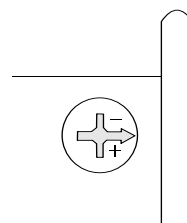
Attach drawer sides to drawer back with 1½" Hi Lo screws

**9d**

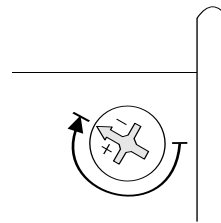
Attach drawer front and tighten cams using a flat head screwdriver

**Left Drawer Side**

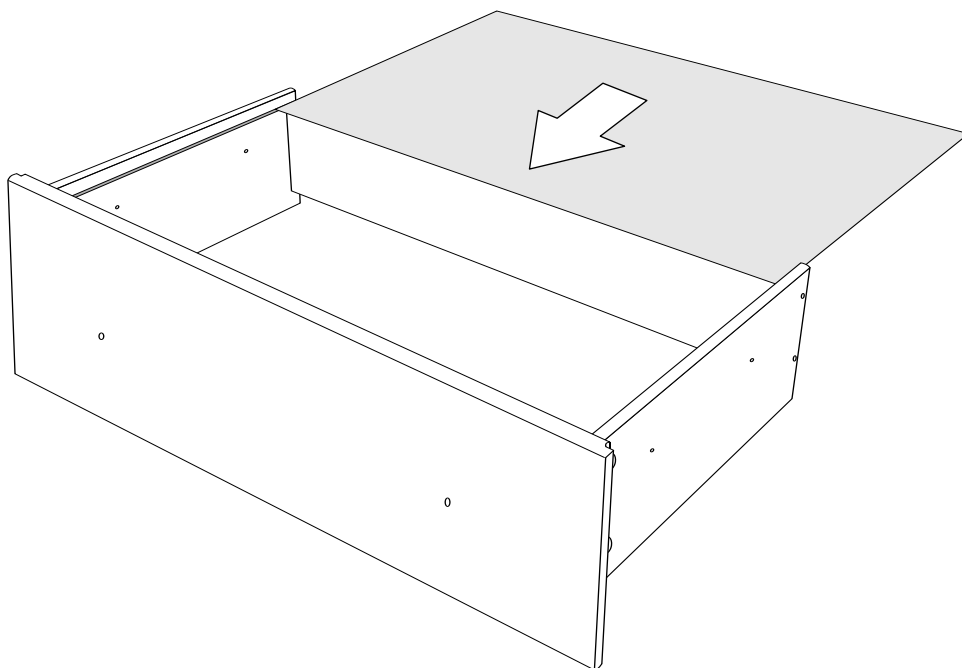
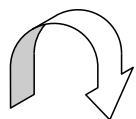
Unlocked

Locked
Turn 210°**Right Drawer Side**

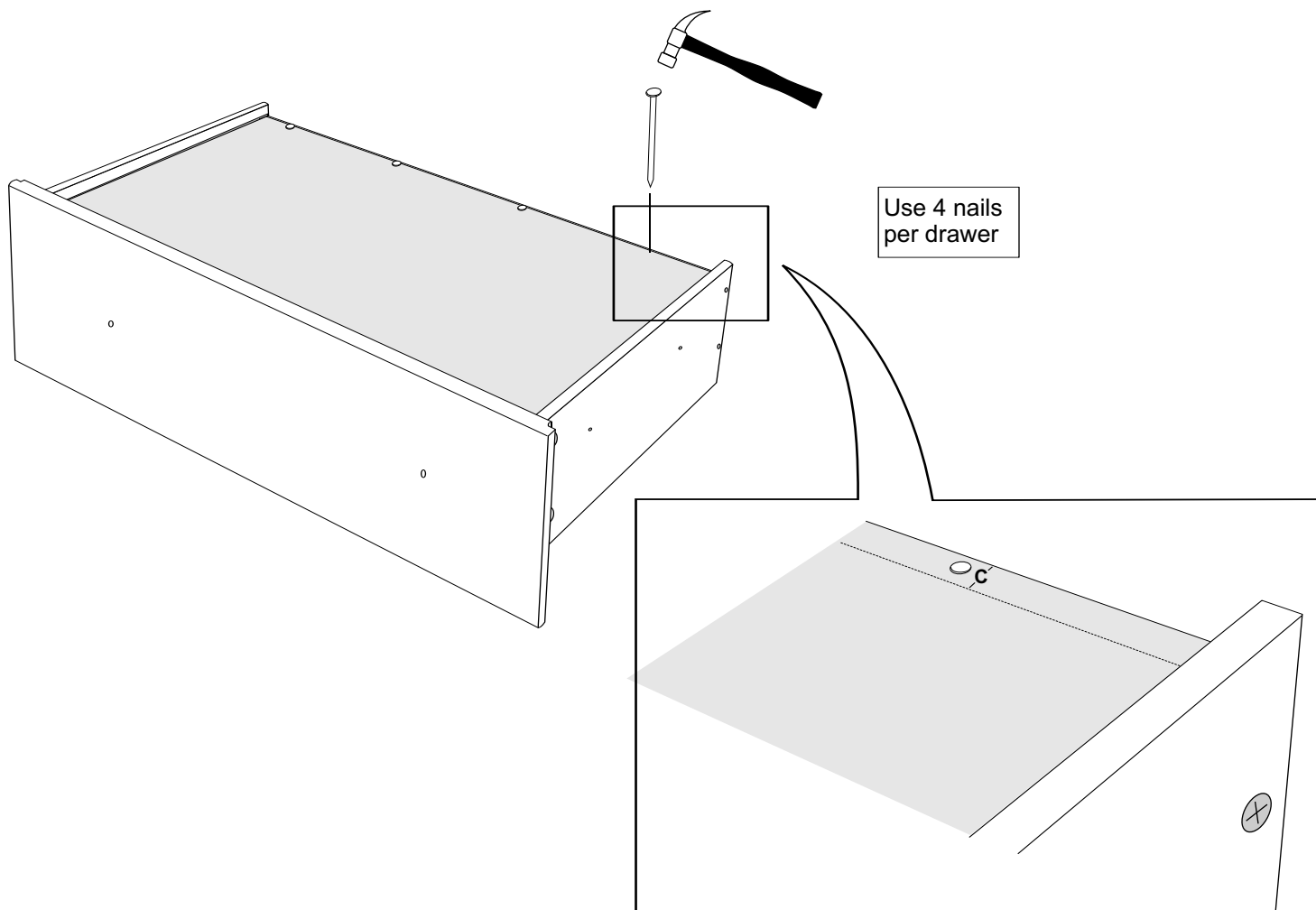
Unlocked

Locked
Turn 210°

9e Turn drawer upside down and slide drawer bottom into grooves

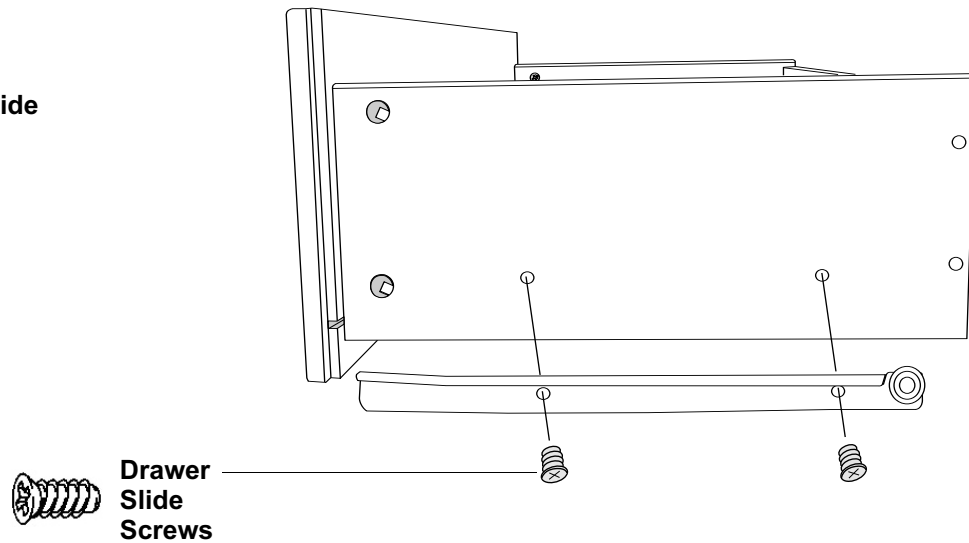


9f Secure the drawer bottom to the drawer back with nails

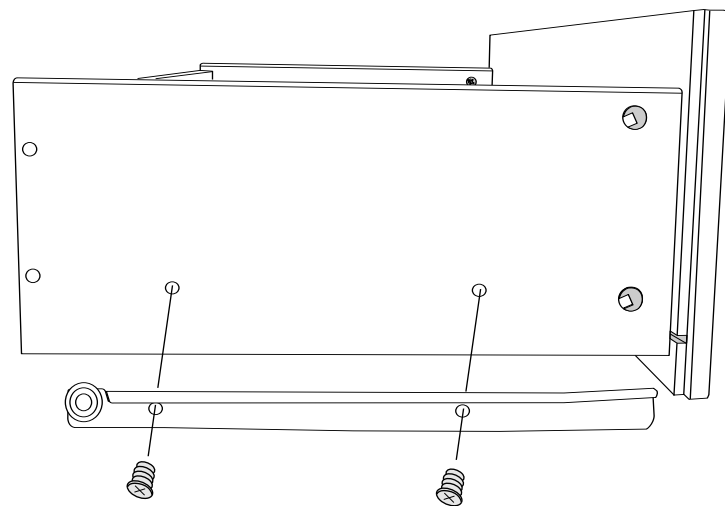


9g Attach drawer slides to left and right drawer sides using drawer slide screws

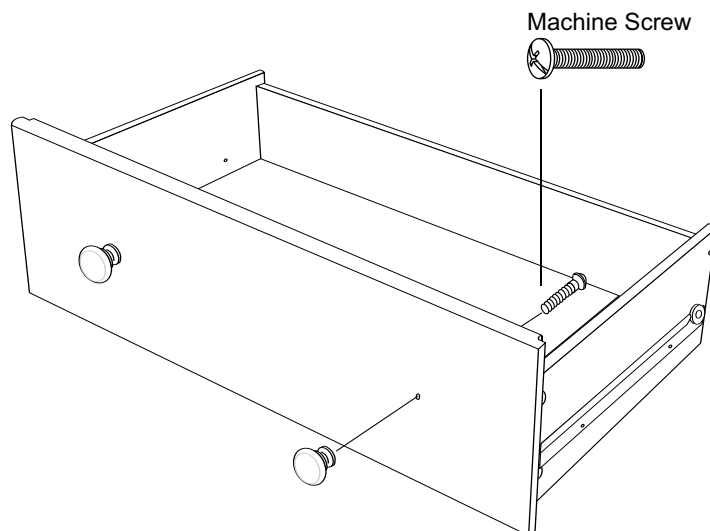
Right Drawer Side



Left Drawer Side



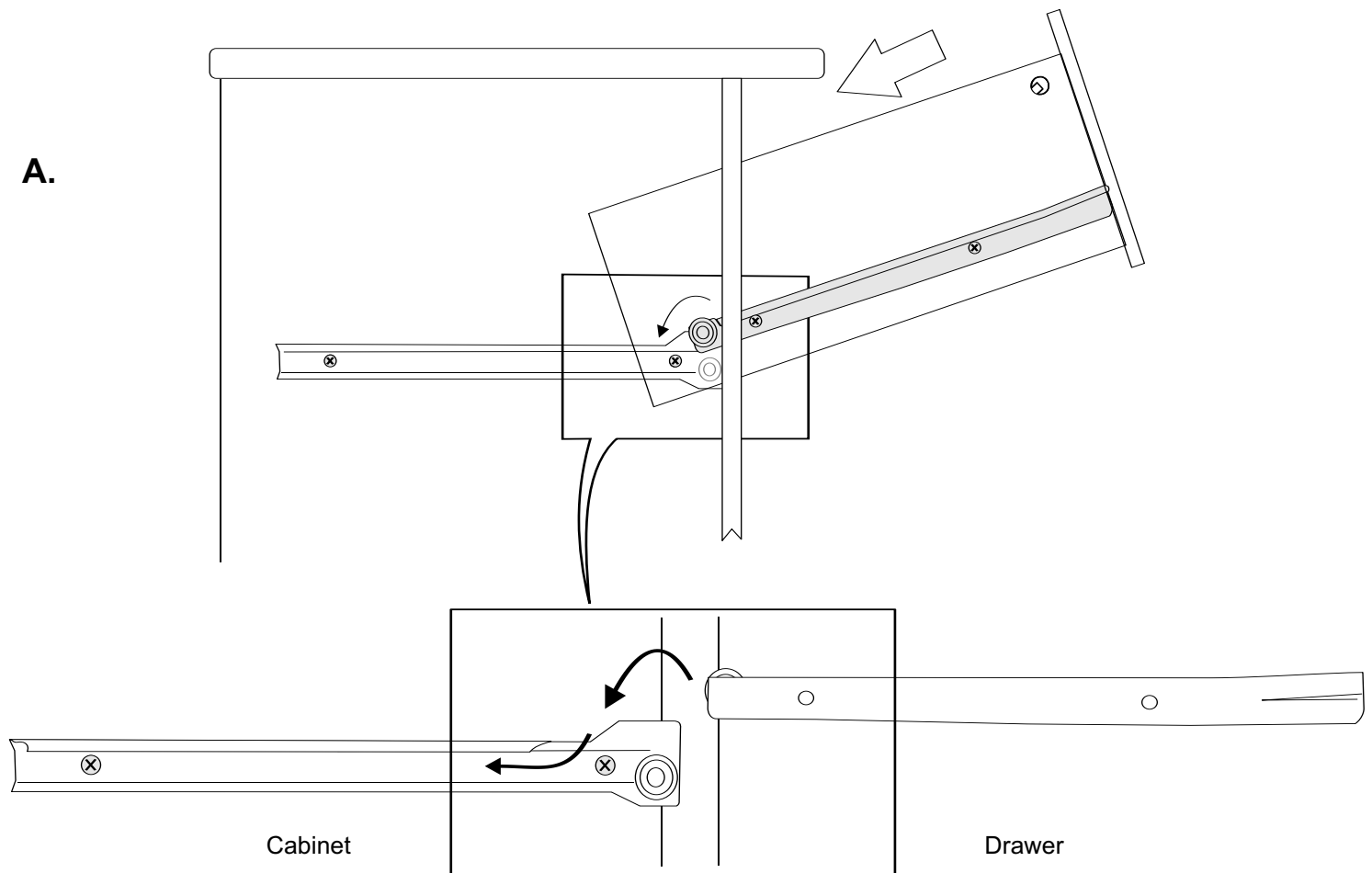
9h Attach knobs with machine screws



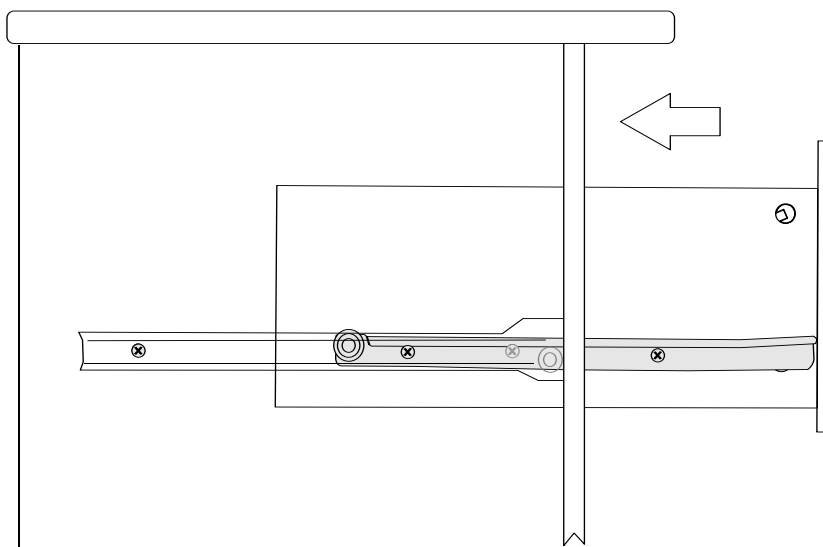
STEP 10 Estimated Time: 2 minutes

Insert drawers

A.



B.



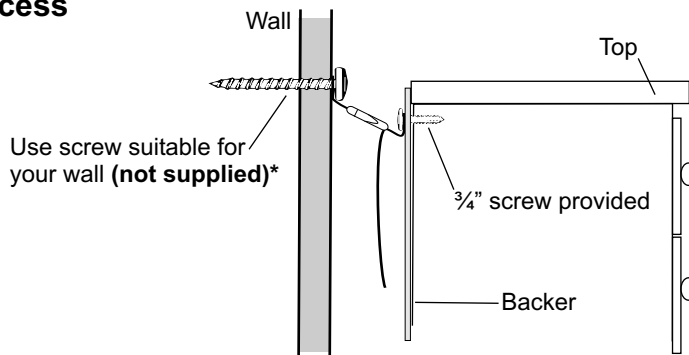
Note: When drawers are installed correctly, you will not be able to remove them without first lifting up the drawer front.

STEP 11 Attaching and Using the Safety Strap

We strongly recommend using a safety strap on all furniture, especially if small children have access

Secure product to wall using the Safety Strap and a screw suitable for your wall (**Not supplied**)*

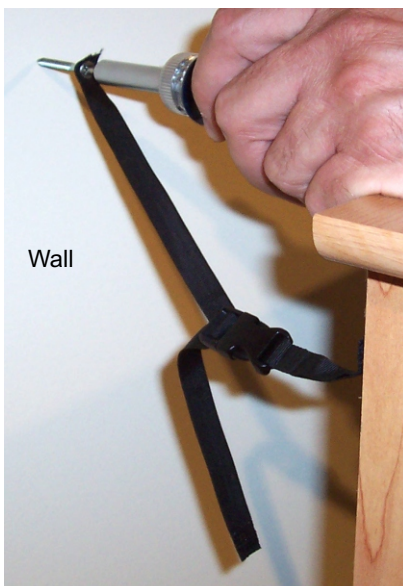
We recommend you screw into a stud. If you cannot locate a stud use a wall anchor appropriate for your type of wall.



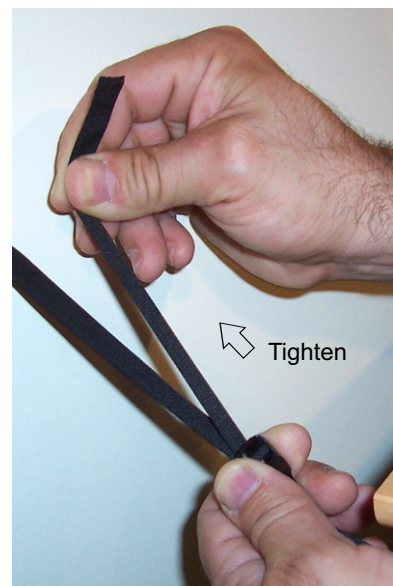
Attach one end of safety strap to one of the sides



Attach the other end to the wall



Pull remaining strap to tighten



Furniture Care Q&A

Q. How do I clean your products?

A. We recommend that you simply wipe your products with a clean, damp cloth and then dry immediately with another clean cloth to maximize the life span and look of your unit

Q. Can I paint or varnish your products?

A. Our products are made from durable composite woods with a laminate finish and therefore should not be painted or varnished.

Q. Are they waterproof?

A. NO. If liquid is spilled and quickly wiped up, no damage will be done to your product. However, continuous exposure to liquids or high humidity may cause damage to the board.

Give Us Your Feedback



CALL US

1-877-PREPAC1 (1-877-773-7221)

Mon - Fri 7am - 4pm PST

10am - 7pm EST

Email Us: assembly@prepacmfg.com

Thanks!