

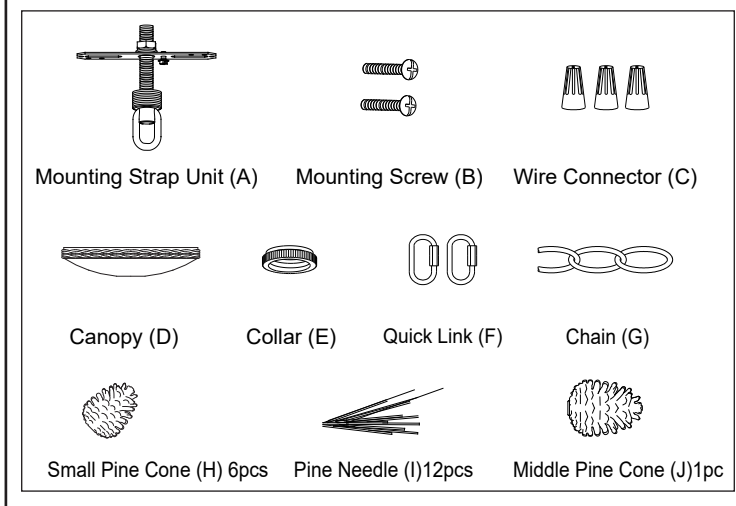
ASSEMBLY AND INSTALLATION INSTRUCTIONS

H0172

WARNING: TO AVOID RISK OF ELECTRICAL SHOCK, BE SURE TO SHUT OFF POWER BEFORE INSTALLING OR SERVICING THIS FIXTURE.

NOTES: 1. Before installing, consult local electrical codes for wiring and grounding requirements.
2. READ AND SAVE THESE INSTRUCTIONS.

Hardware Package (included):



Installation Steps

Turn off the power at fuse or circuit box

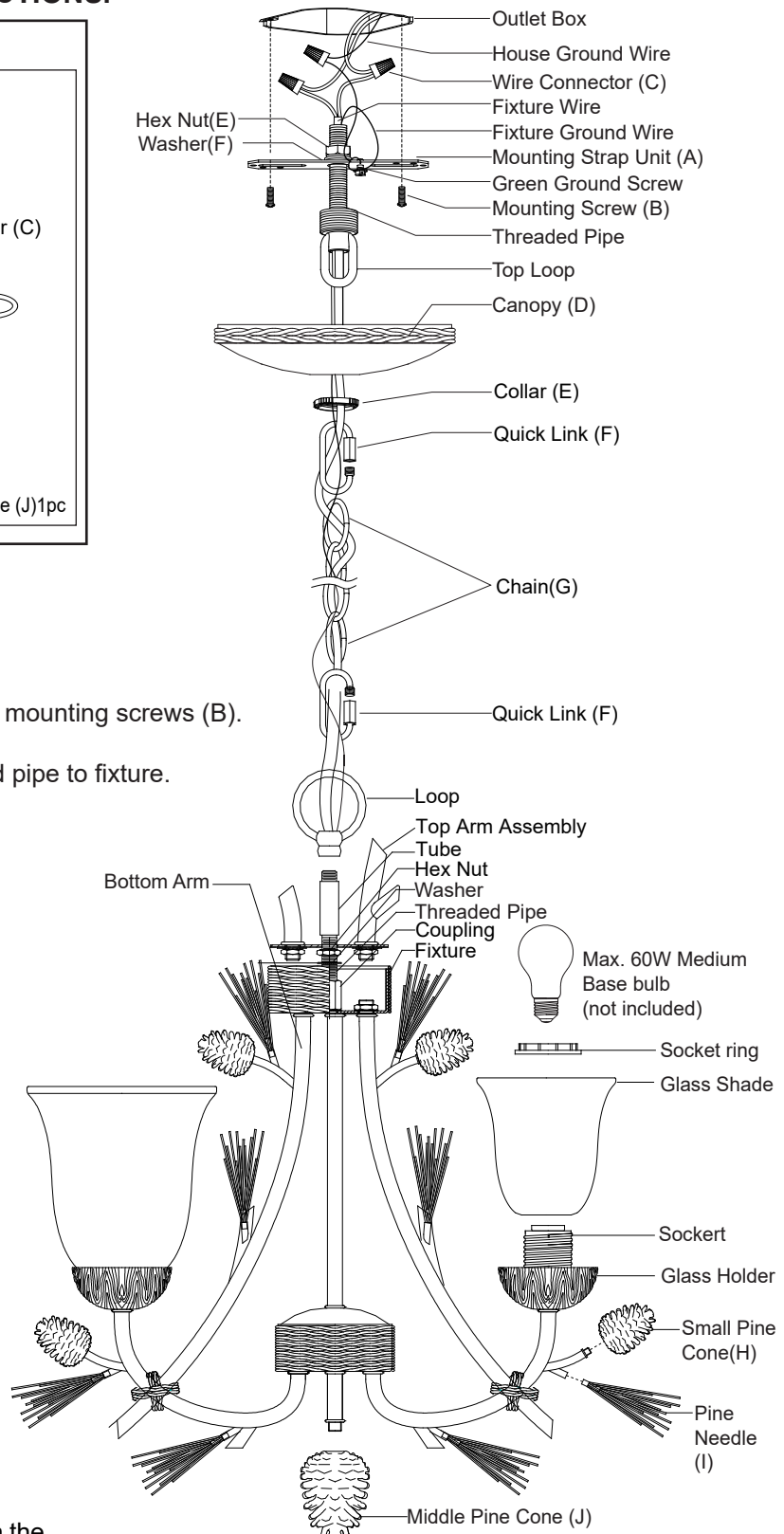
1. Attach mounting strap unit (A) to outlet box using two mounting screws (B).
2. Slip the top arm assembly down through the threaded pipe to fixture.

3. Adjust the arms of the fixture according to the picture on the package.

Important:

- a. The bottom arms should be positioned with equal distances between them.
- b. The bottom arms should be fixed securely.
- c. Each top arm is supposed to be aligned with the corresponding bottom arm.

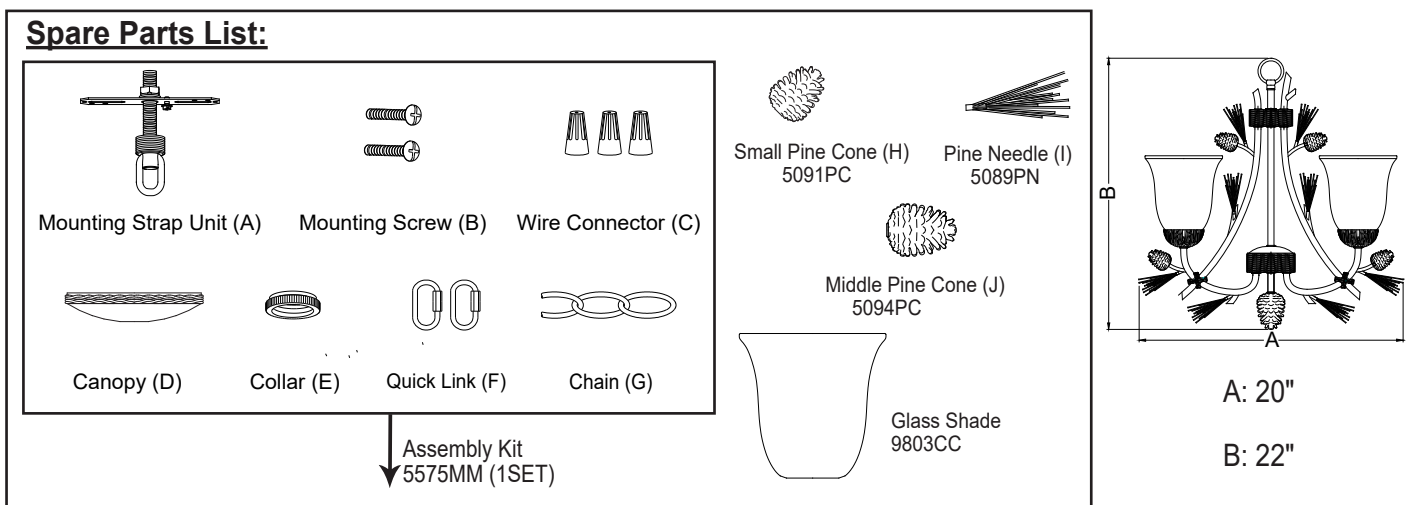
4. Slip the tube down through the threaded pipe, and then secure it with loop.
5. Choose the length of the chain (G) you need, then weave the fixture wire and the fixture ground wire through the chain (G), collar (E) and canopy (D).
6. Connect one end of the chain (G) to the loop by using a quick link (F).
7. Connect the other end of the chain (G) to the top loop by using another quick link (F).
8. Thread the fixture wire and fixture ground wire through the top loop, threaded pipe and mounting strap unit (A).



9. Pull out the source wires from the outlet box. Make wire connections using wire connectors (C) as follows:
 - Connect the hot wire (black insulation) from the fixture to the black wire from the power source.
 - Connect the neutral wire (white insulation) from the fixture to the white wire from the power source.
 - Attach the fixture ground wire (bare wire) to the mounting strap unit (A) with the green ground screw, and then connect it to the house ground wire with a wire connector (C).
 Carefully put the wires back into the outlet box.
10. Attach the canopy (D) to the mounting strap unit (A) by inserting the top loop, then secure it with the collar (E).
11. Secure the pine cones (H, J) and pine needles (I) onto the fixture as shown in graph.
12. Attach the glass shades to the glass holder, and then secure them with the socket rings.
13. Install 3 x 60W Max. medium base bulbs (not included). Check relamping label at socket area or packaging for maximum allowed wattage.

Turn on the power at fuse or circuit box

The following parts are available for reorder if damaged or missing.



1 Year Warranty

Vaxcel warrants all of our products against defects in workmanship and finishes for one year following the date of shipment.

Exclusions: This warranty does not include the failure of products from extreme acts of nature; environmental conditions not suited for the products intended use; operation in temperatures outside of the range specified in the instruction manual; usage with improper power supply, power surges or dips. For coastal locations, some corrosion is considered normal for the environment.

Vaxcel reserves the right to repair, replace or issue a credit for any properly installed product, provided it is returned per RMA instruction. This warranty is limited to the cost of the product only and does not extend to transportation, installation or replacement costs.

How can warranty service be obtained?

info@vaxcel.com

1-800-482-9235