

WIRE CONNECTION DIAGRAM

Wires meet safety standards are recommended to connect the supply circuit.

CAUTION: Risk of fire

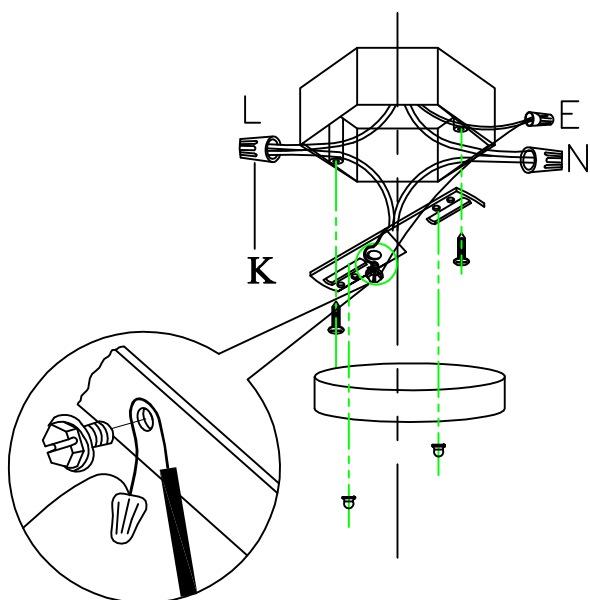


CANOPY INSTALLATION INSTRUCTIONS

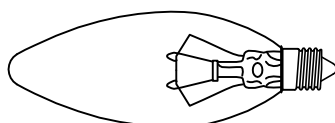
Please read all instructions carefully. Before you proceed to install, make sure that the power supply is turned off and remains off until installation is complete.

Please note that each part has been assigned a letter.

Please proceed in an alphabetical order.



Light Bulb

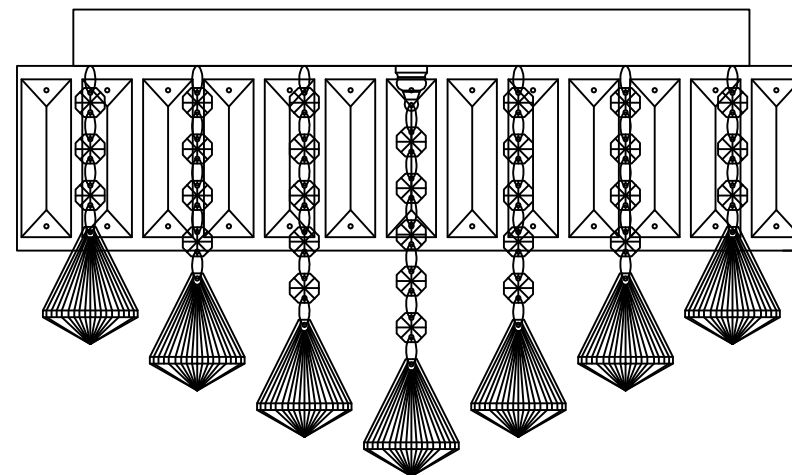


E12

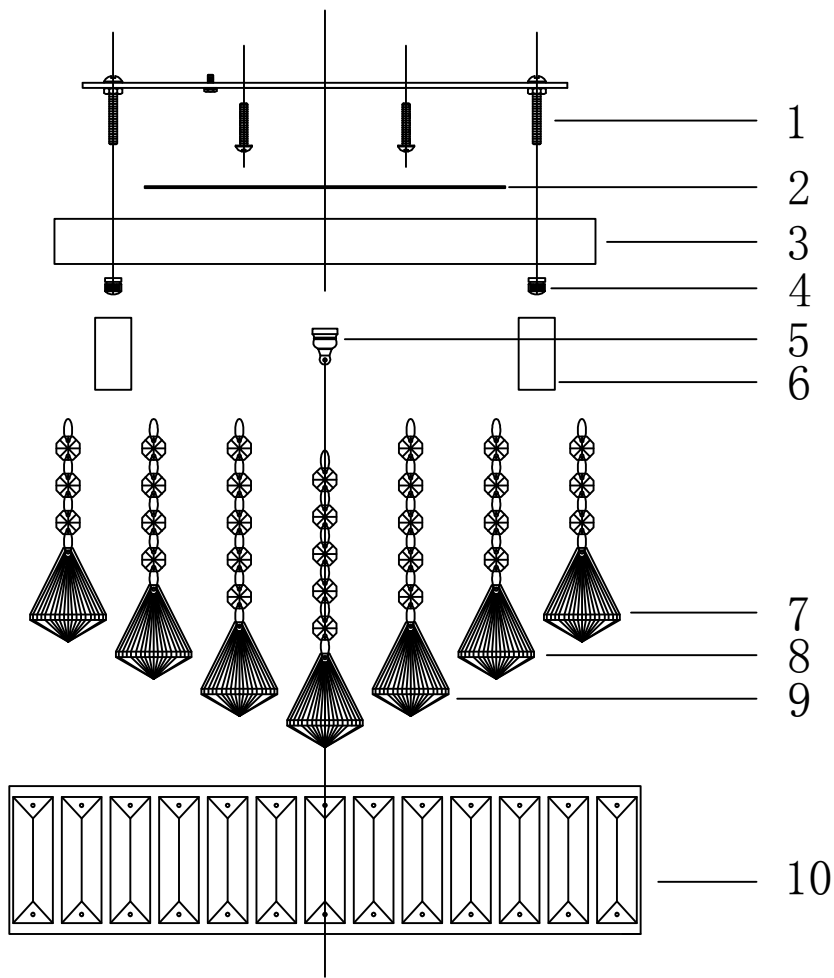
USER MANUAL FOR MODEL# HG8882

Light Bulb: E12 light: E12*4

(Rated 110–130V/60Hz, bulb 60W maximum.)



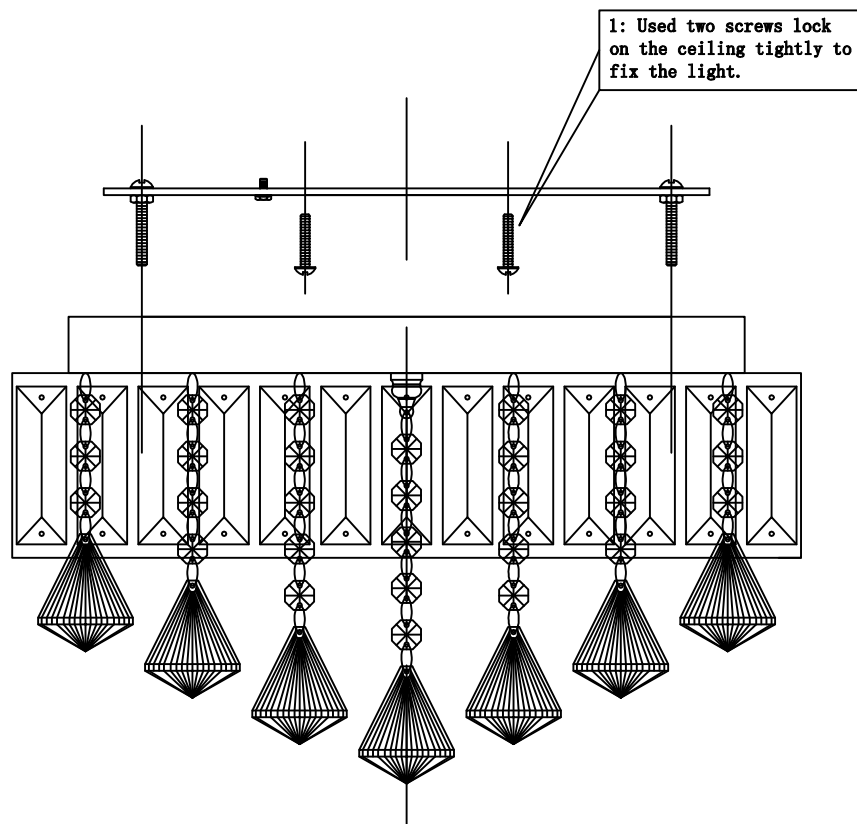
Please note: The parts in this table are completely unassembled, for illustrative purpose. In the actual product that you receive, some parts are assembled and attached together.



Products packing list

NO.	Picture	Quantity
1		1 pcs
2		1 pcs
3		1 pcs
4		2 pcs
5		2 pcs
6		4 pcs
7		18 pcs
8		12 pcs
9		7 pcs
10		1 pcs

Assembly and Installation Steps



Product Size

