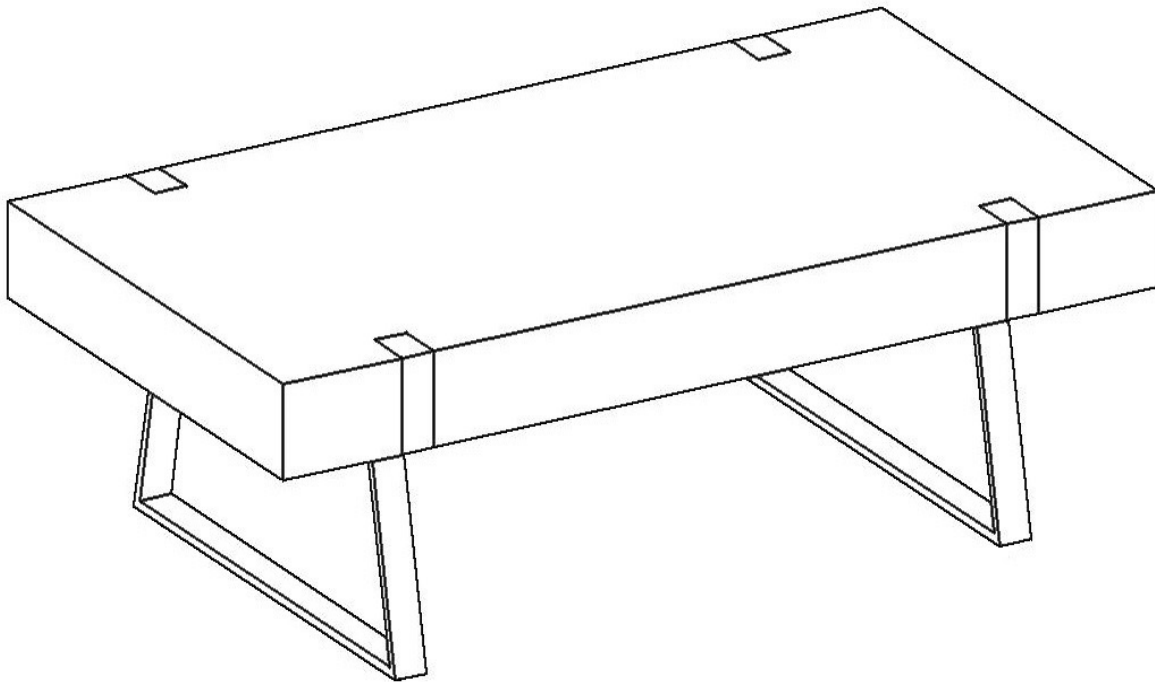


Assembly Instructions





Caution : You must read this before you proceed

COFFEE TABLE



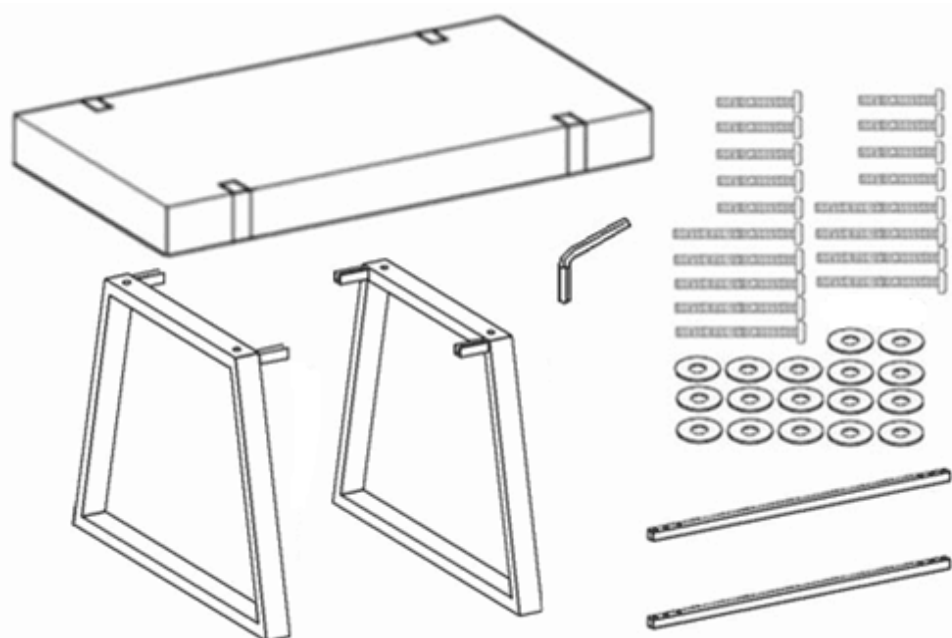
Parts List

Label	Picture	Description	QTY
A		Table Top	1
B		Support Rail	2
C		Leg Frame	2

Label	Picture	Description	QTY
①		Short Bolt (m6x16mm)	9
②		Long Bolt (m6x35mm)	9
③		Washer	17
④		Allen Key	1

Assembly Preparation

Before
Beginning
Assembly:



- Read instructions, cover to cover-



- Have 2 adults on hand for assembly-



- Do not assemble on flooring or carpet-



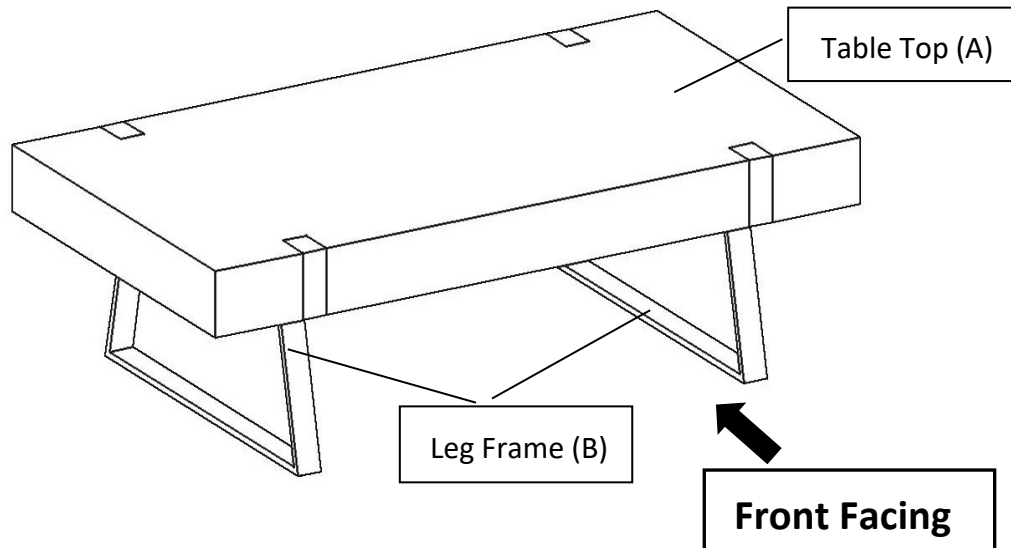
- Assemble on a clean non-marring surface (packing foam)-



- Save all packaging until finished-

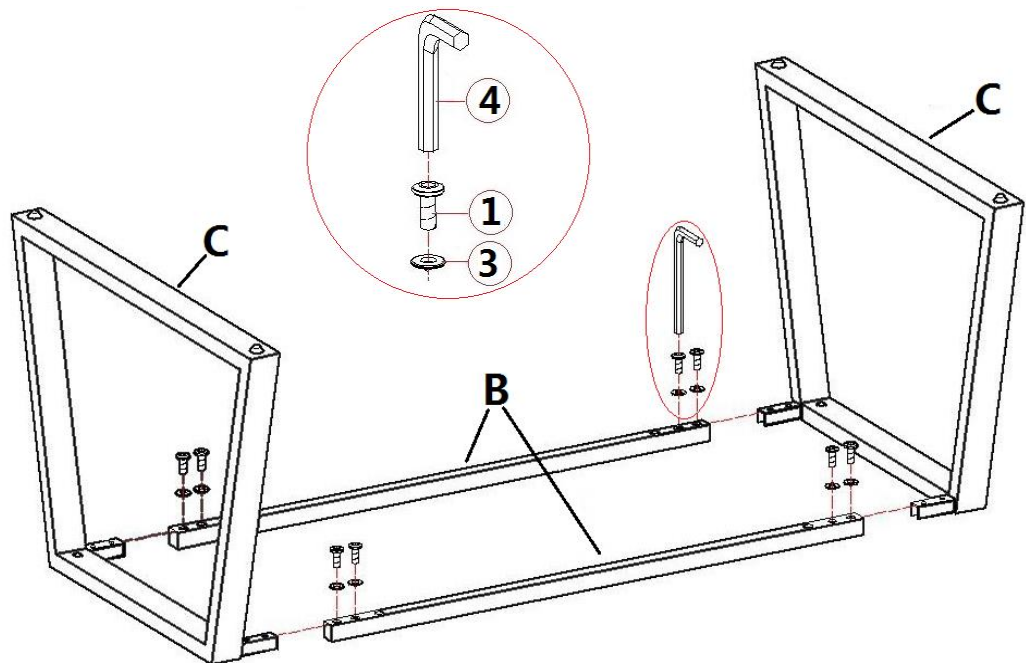
Assembly Steps

Overview:



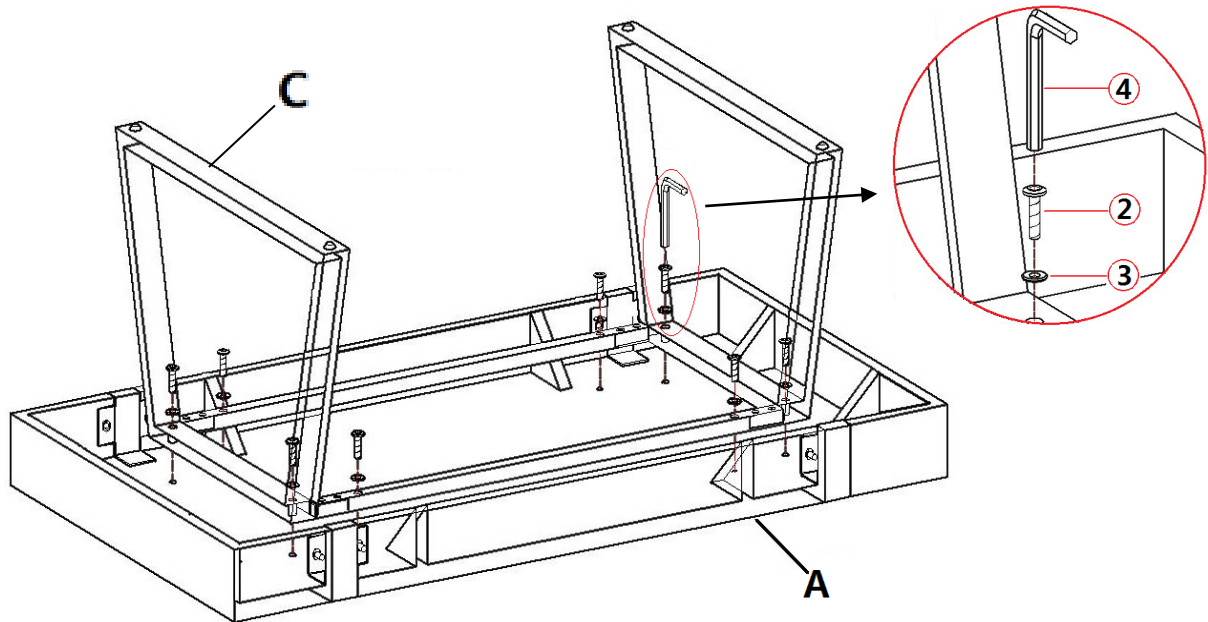
This Coffee Table has multiple parts and may require up to 30 minutes to assemble. To give you an overview of the Coffee Table parts, the above picture is to help you put the various parts into perspective. Please read through the instructions below to familiarise yourself with the parts and steps before assembly.

Step 1



Carefully place the Leg Frame(C) and Support Rail (B) on a clean, non-marring surface as picture, align the mounting positions on Leg Frame(C) with the mounting positions on Support Rail (B), then attach them together by using Washers(③) and Short Bolts (①) with Allen Key (④).

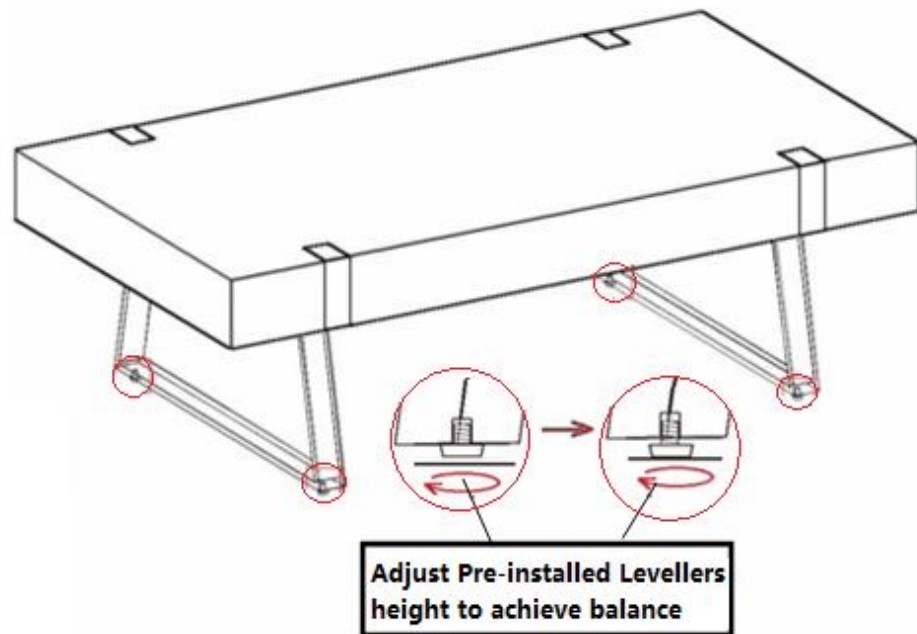
Step 2



Carefully place the Table Top (A) facedown on a clean, non-marring surface with assistant from second adult. Align the mounting positions on assembled Leg Frame(C) and Support Rail (B) with the mounting positions on Table Top (A), then attach them together by using Washers(③) and Long Bolts (②) with Allen Key (④).

Tightening all Bolts(①&②)completely in a sequential manner.

Step 3



Stand the Table up.

Your Table is ready for use.

If the Table wobbles adjust the Pre-installed Levellers at the bottom of the Legs until the Table is level.

This Table can only be used on a flat, level surface.

Care & Maintenance



- Furniture may scratch floors. We recommend using furniture pads to protect your floors.



- Do not put hot items directly on furniture surface.



- Do not clean furniture with harsh cleansers or polish.



- Do not place furniture under direct sunlight.



- Do not place furniture near heating or cooling vents.



- Do not write on furniture without a padded barrier to protect the surface.



- Do not place furniture outside . For indoor use only.



- Not for commercial use. For residential use only.



- Stains may be removed with mild soap solution and damp cloth.



- Children should not climb or jump on the furniture.



- Dust and pick-up spills using a clean, non-colored, lint-free cloth.