

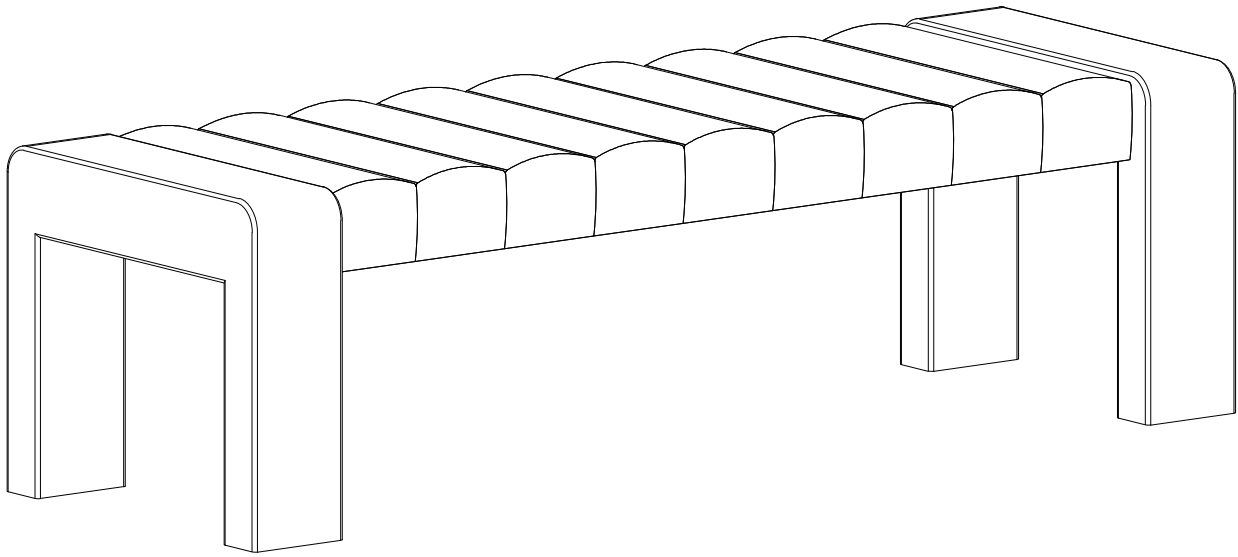
Assembly Instruction

Caution : You must read this before you proceed

Care & Maintenance

-  • Not for commercial use. For residential use only.
-  • Furniture may scratch floors. We recommend using furniture pads to protect your floors.
-  • Do not put hot items directly on furniture surface.
-  • Do not clean furniture with harsh cleansers or polish.
-  • Do not place furniture under direct sunlight.
-  • Do not place furniture near heating or cooling vents.
-  • Do not write on furniture without a padded barrier to protect the surface.
-  • Do not place furniture outside . For indoor use only.
-  • Stains may be removed with mild soap solution and damp cloth.
-  • Children should not climb or jump on the furniture.
-  • Dust and pick-up spills using a clean, non-colored, lint-free cloth.

N769P411338



Parts List

Label	Picture	Description	QTY
1		Ottoman	1
2		Legs	2

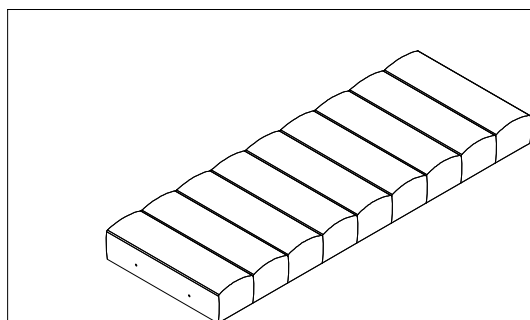
Hardware List

Label	Picture	Description	QTY
A		Bolts (5/16"x50mm)	4+1
B		Lock Washer (5/16")	4+1
C		Flat Washer (5/16")	4+1
D		M4 Allen Key	1+1

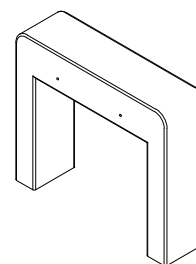
Please open the Velcro pouch underneath the ottoman to take out the hardware packs.

Assembly Preparation

Before
Beginning
Assembly:



① ×1



② ×2



- Read instructions, cover to cover-



- Have 2 adults on hand for assembly-



- Do not assemble on flooring or carpet-



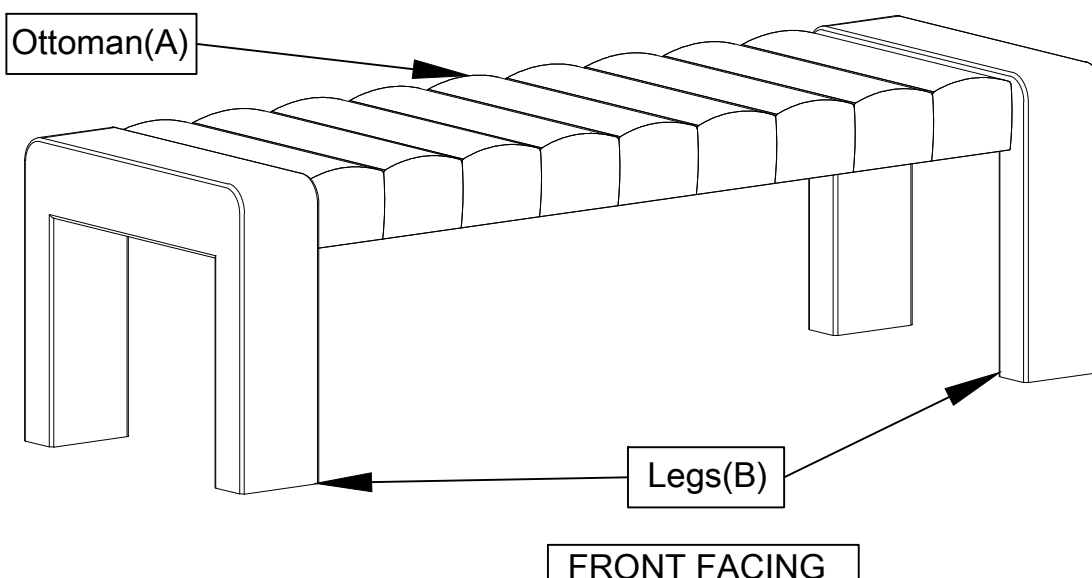
- Assemble on a clean non-marring surface (packing foam)-



- Save all packaging until finished-

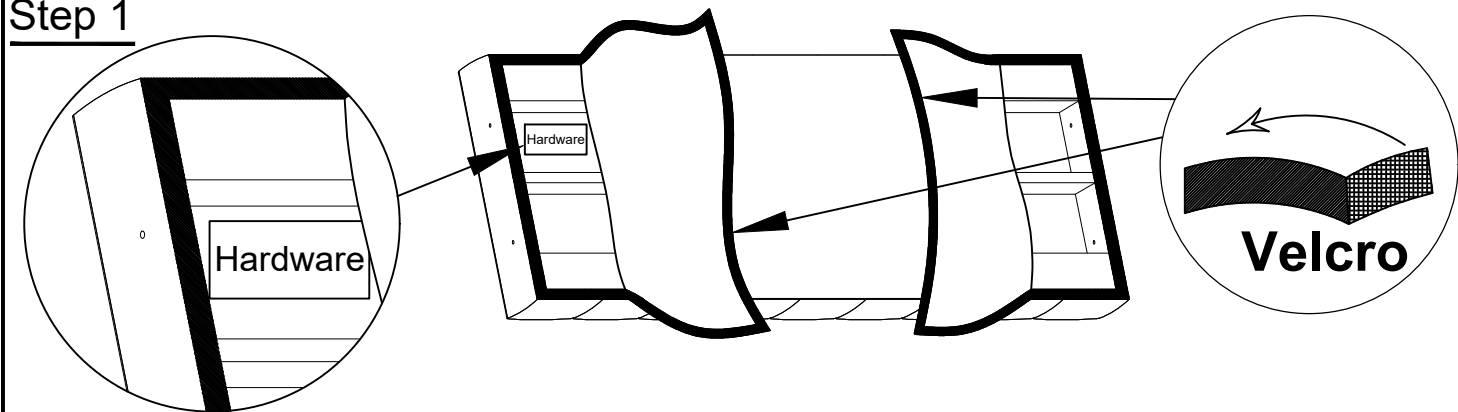
Assembly Steps

Overview



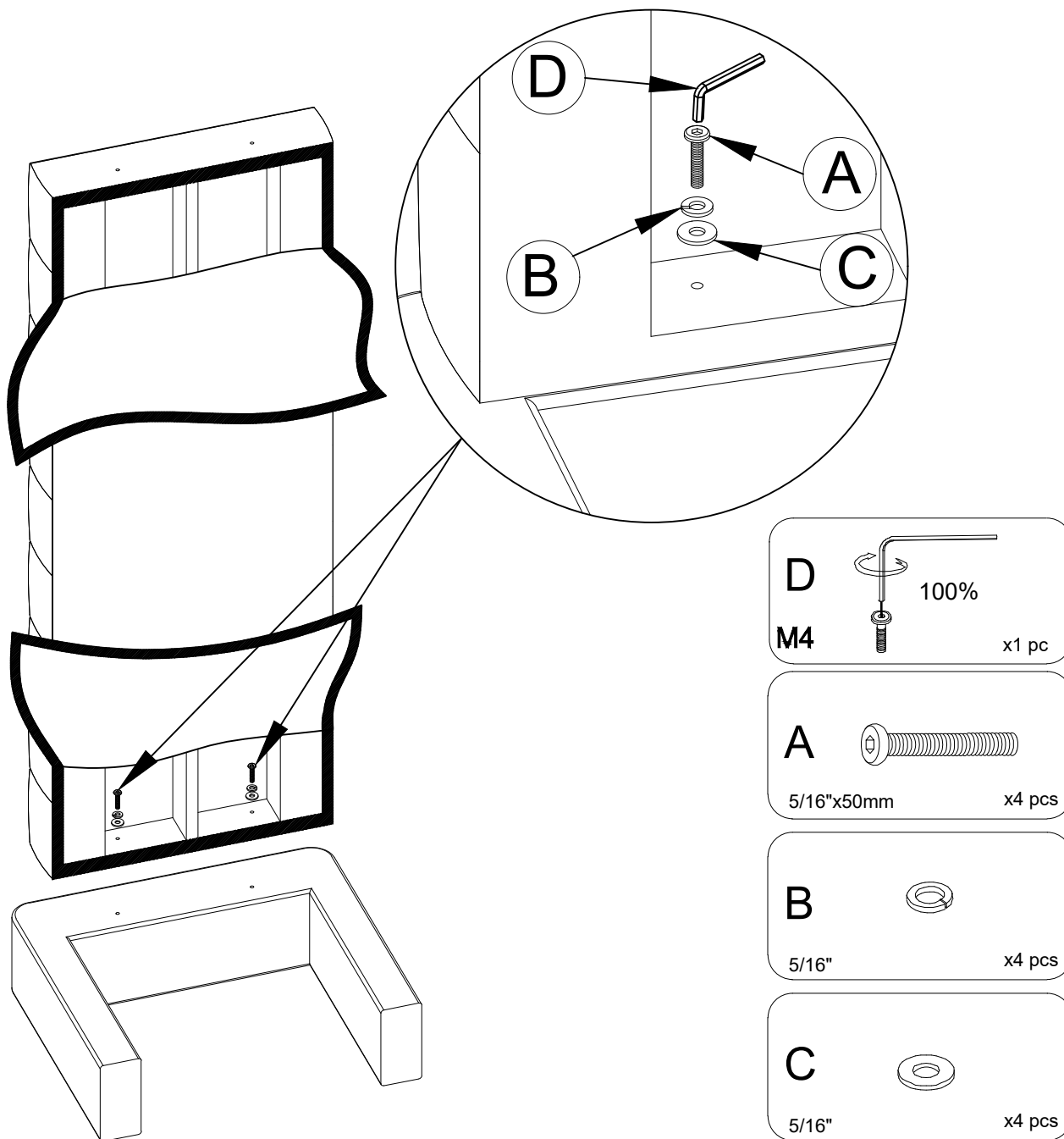
This ottoman has multiple parts and may require up to some 30 minutes to assemble. To give you an overview of the parts, the above picture is to help you put the various parts into perspective. Please read through the instructions below to familiarise yourself with the parts and steps before assembly.

Step 1



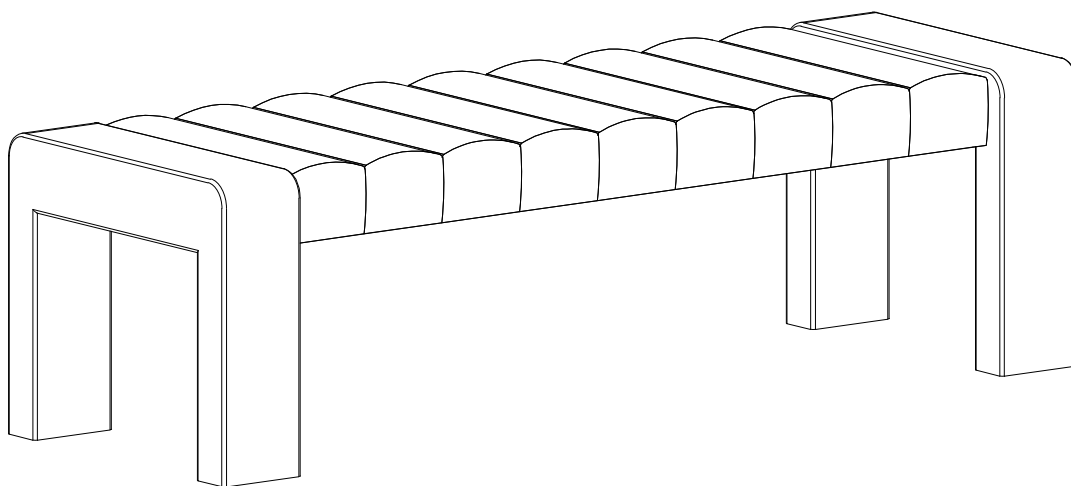
Open the velcro of the Ottoman (1) and take out Hardware.

Step 2



Place the ottoman upside down. Attach the Ottoman (1) to the Legs (2) using Bolts (A), Lock Washers (B), and Flat Washers (C). Tighten with the M4 Allen Key (D). Repeat the same steps with the other Leg (2).

Step 3



Complete assembly, flip the Ottoman.
Your Ottoman can only be used on a flat, level surface.