

# Assembly Instructions

**Caution: You must read this before you proceed**

## Care & Maintenance



- Not for commercial use. For residential use only.



- Furniture may scratch floors. We recommend using furniture pads to protect your floors.



- Do not put hot items directly on furniture surface.



- Do not clean furniture with harsh cleansers or polish.



- Do not place furniture under direct sunlight.



- Do not place furniture near heating or cooling vents.



- Do not write on furniture without a padded barrier to protect the surface.



- Do not place furniture outside . For indoor use only.



- Stains may be removed with mild soap solution and damp cloth.



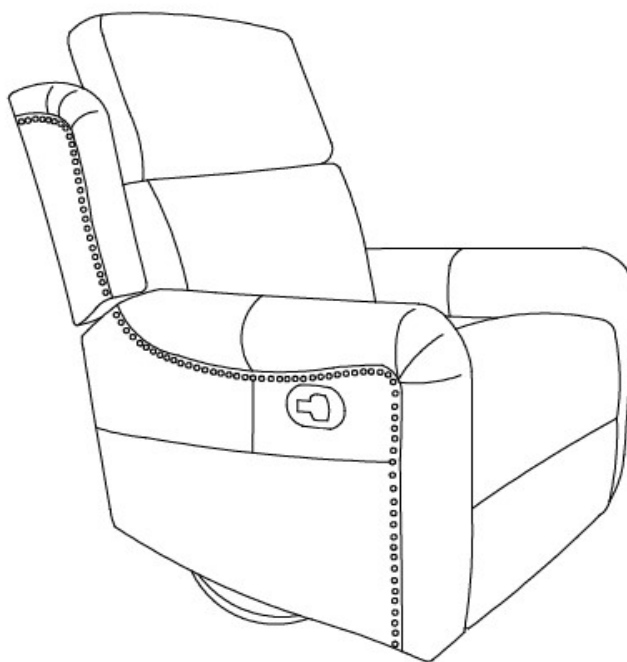
- Children should not climb or jump on the furniture.



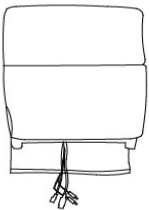
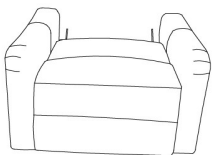
- Dust and pick-up spills using a clean, non-colored, lint-free cloth.

Please look in seat for hardware packs and legs.

## RECLINER



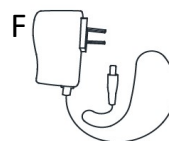
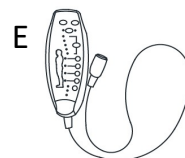
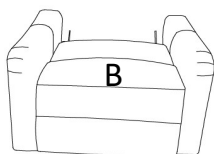
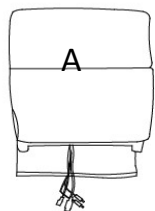
### **Parts List**

Label	Picture	Description	QTY
A		Chair Backrest	1
B		Chair Base	1

C		Right Wing	1
D		Left Wing	1
E		Controller	1
F		Power Line	1

## **Assembly Preparation**

Before  
Beginning  
Assembly:



- Read instructions, cover to cover-



- Have 2 adults on hand for assembly-



- Do not assemble on flooring or carpet-



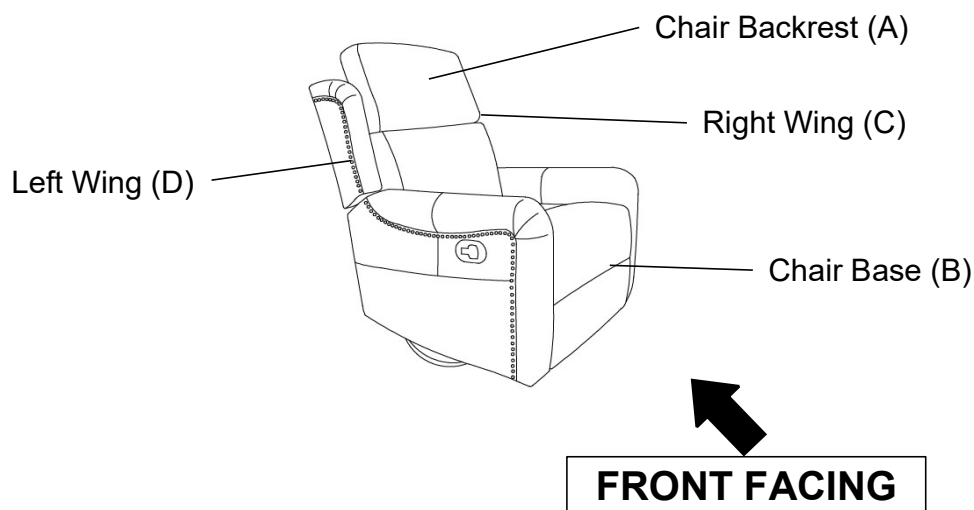
- Assemble on a clean non-marring surface (packing foam)-



- Save all packaging until finished-

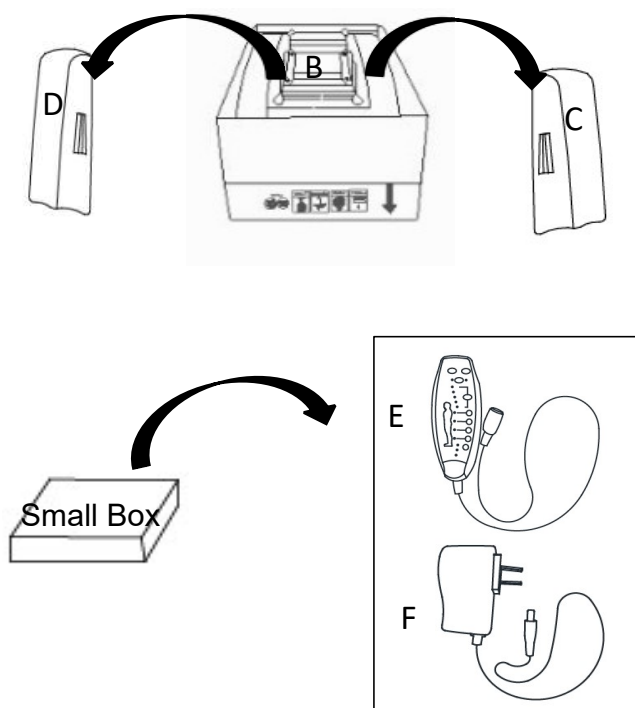
## Assembly Steps

### Overview



This Recliner has multiple parts and may require up to 30 minutes to assemble. To give you an overview of the Reclining Chair parts, the above picture is to help you put the various parts into perspective. Please read through the instructions below to familiarise yourself with the parts and steps before assembly.

### Step 1



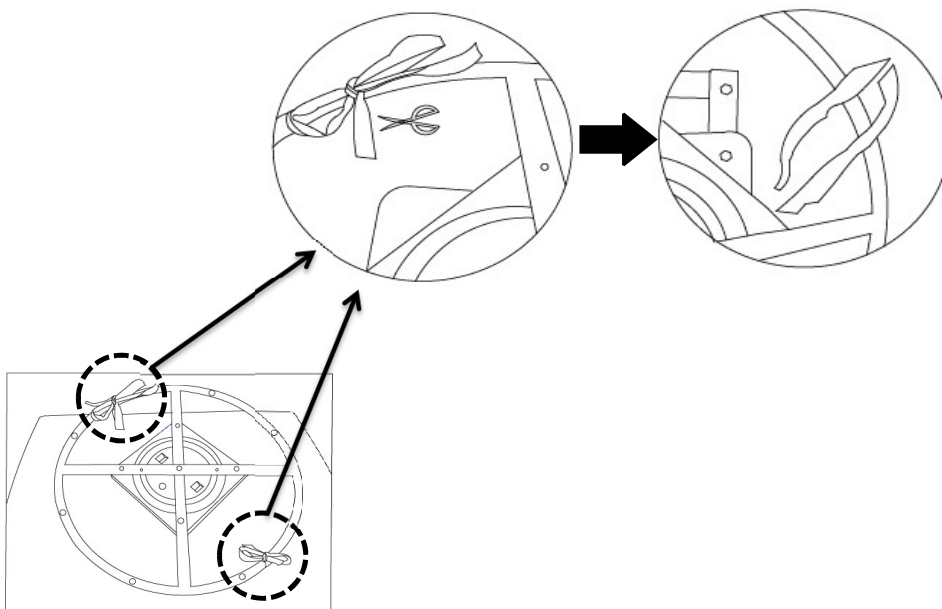
Take out the two non-woven bags and Small Box from the bottom of the Chair Base(B).

Then take out the Left Wing(D) and Right Wing(C) from non-woven bags.

Open the Small Box to take out the Controller(E) and Power Line(F).

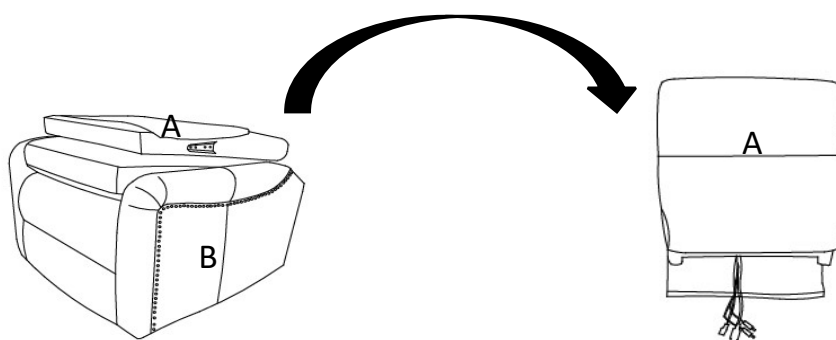
Place the parts on a clean, non-marring surface.

## Step 2



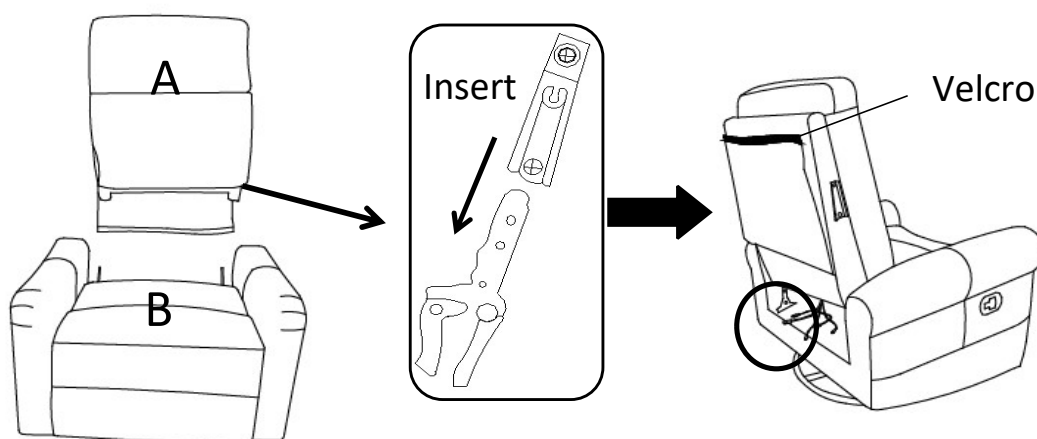
Before assembly, please untie the cloth rope under the mechanism for fixing shaking and swiveling.  
Please pay attention to safety when operating.

## Step 3



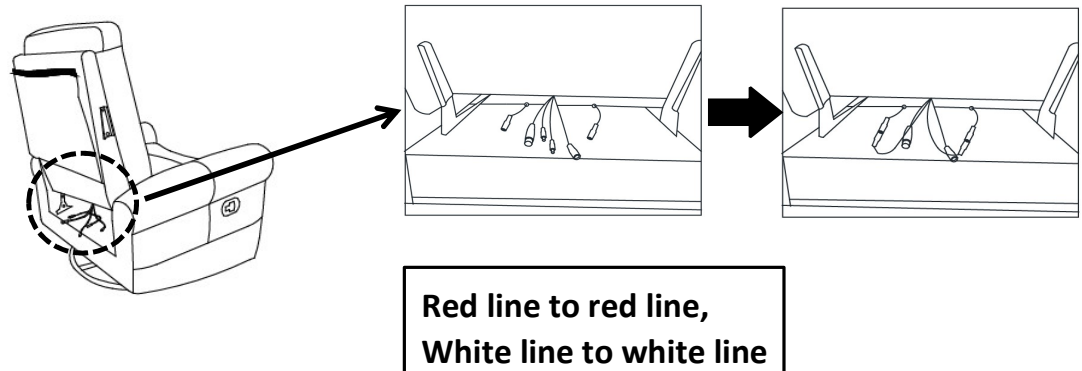
Take out the Chair Backrest(A) from the Chair Base(B).

## Step 4



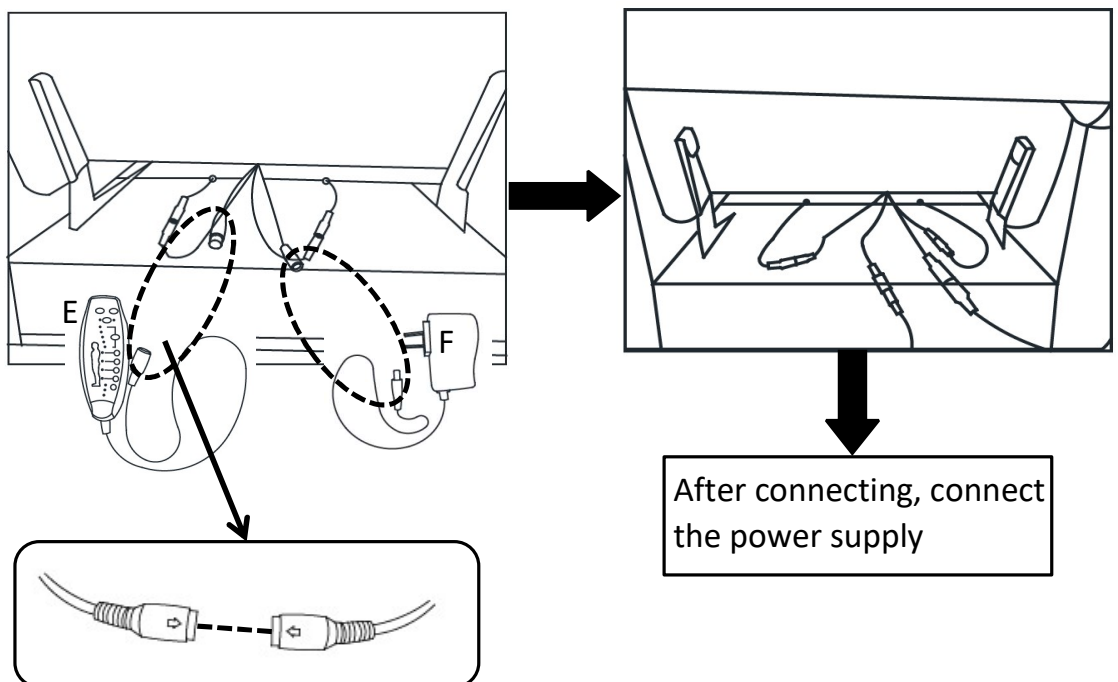
With assistance from your adult partner, hold up the Chair Backrest(A) while standing behind the Chair Base(B).  
 Insert the small metal arms on the sides of the Chair Backrest(A) into the prefabricated slide lock gadget on the Chair Base(B) as shown above.  
 Firmly but gently, push the Chair Backrest(A) downwards until the Chair Backrest(A) is fully slotted and locked into position.

## Step 5



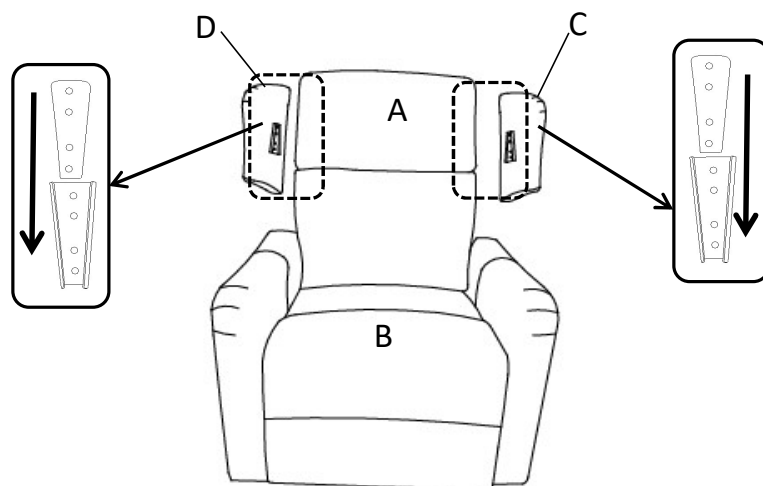
The red line of the Chair Backrest(A) is connected to the red line of the Chair Base(B), and the white line of the Chair Backrest(A) is connected to the white line of the Chair Base(B)

## Step 6



Note that there are arrow marks on the connector of the controller and the thicker connector, which need to be aligned before insertion.  
 The power cord should be connected to the thinner connector.

## Step 7

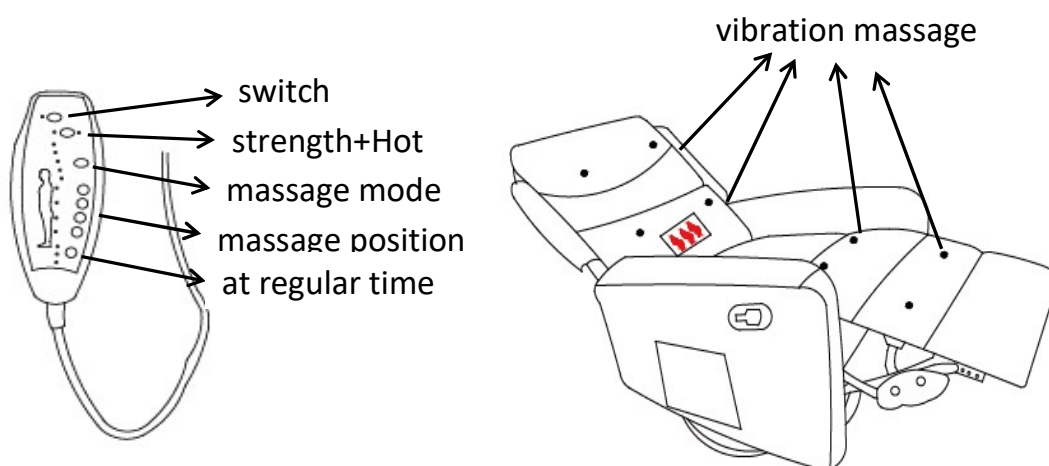


Align the mounting brackets of the Right Wing(C) with those on the Right side of Chair Backrest(A).

Then slide Right Wing(C) downward by hand to make sure it locks into the position as shown in the picture.

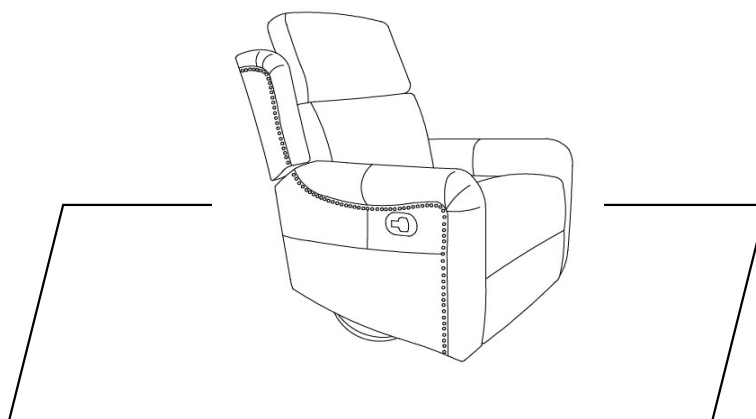
Repeat the same process to attach the Left Wing(D) into the left side of Chair Backrest(A).

## Step 8



Turn on the controller switch to start the massage

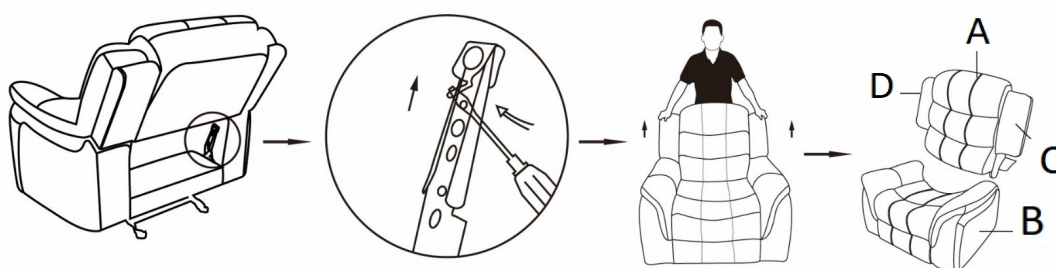
## Step 9



Make sure all parts are connected and securely locked into position.  
Your Recliner is ready for use.

**This Recliner can only be used on a flat, level surface.**

## Disassembly



Disassembly Note: Open the flap on the Chair Backrest(A), use a screwdriver (Don't use fingers) pressing outward on the metal ear on the preattached Metal Bracket on one side of the Chair Base(B).

With assistance of your adult partner to keep the Chair Base(B) in place, pull out the Chair Backrest(A) upward at the same time, repeat the same step for another side. Then the Chair Backrest(A) can be taken out.



## Warning!!



**Correct Way to Use**



**Incorrect Way to Use**



**Incorrect Way to Use**



**Incorrect Way to Use**



**Incorrect Way to Use**



**Incorrect Way to Use**

Always leave the chair in an upright and closed position after use.  
Keep hands and feet clear of the footrest mechanism and any gaps.  
Do not allow children to play on the chair.  
Do not lean to side to pick up anything while sitting on the chair.  
Do not sit on the arms.  
Do not stand up when the recliner open.  
Only the occupant should operate the chair.

## User Instructions.

### Glider Recliner With Swivel

Please read the Instruction Manual below carefully before use.

This is a Recliner Chair. At anytime in a reclined seat position or in the upright position. You may enjoy the rocking motion by using your body weight in a back-front rocking motion, and swivel motion as well.

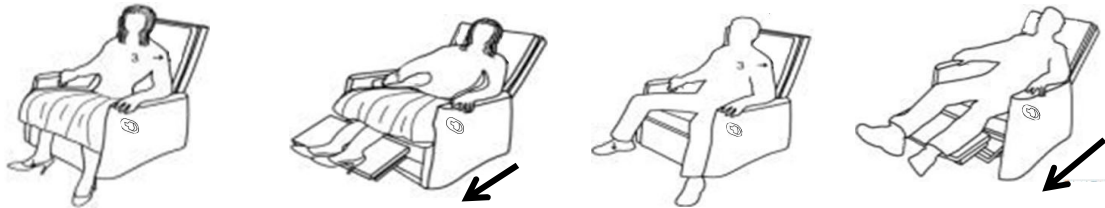
Supervise children, when in use of this Recliner.

### To get into the Recline position:

Sit into the seat.

Open the trigger on the outside of right armrest.

Use your body weight and push backwards into the seat into a fully reclined position.



### To move the Chair back into the Upright position:

Tilt your body weight slightly forward and upwards.

The seat back will come up to an upright position.

Use your feet to push the Footrest down.

The Chair will automatically lock when it is in the fully upright position.

Where necessary, use your arms help lift/push yourself out of the seat

