

# Assembly Instructions

**Caution : You must read this before you proceed**

## Care & Maintenance



- Not for commercial use. For residential use only.



- Furniture may scratch floors. We recommend using furniture pads to protect your floors.



- Do not put hot items directly on furniture surface.



- Do not clean furniture with harsh cleansers or polish.



- Do not place furniture under direct sunlight.



- Do not place furniture near heating or cooling vents.



- Do not write on furniture without a padded barrier to protect the surface.



- Do not place furniture outside . For indoor use only.



- Stains may be removed with mild soap solution and damp cloth.



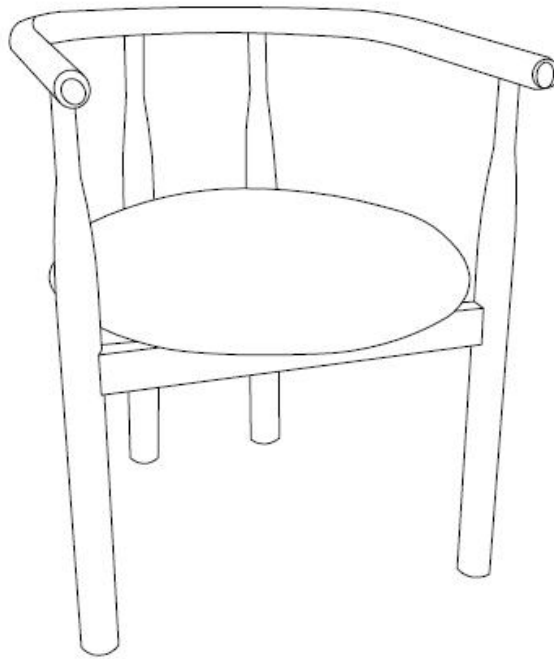
- Children should not climb or jump on the furniture.




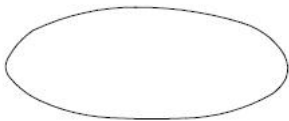
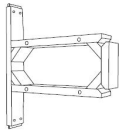


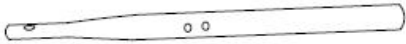
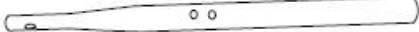
- Dust and pick-up spills using a clean, non-colored, lint-free cloth.

Please look in boxes for hardware packs and legs.




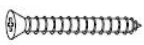





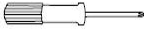
# Dining Chair



## Parts List

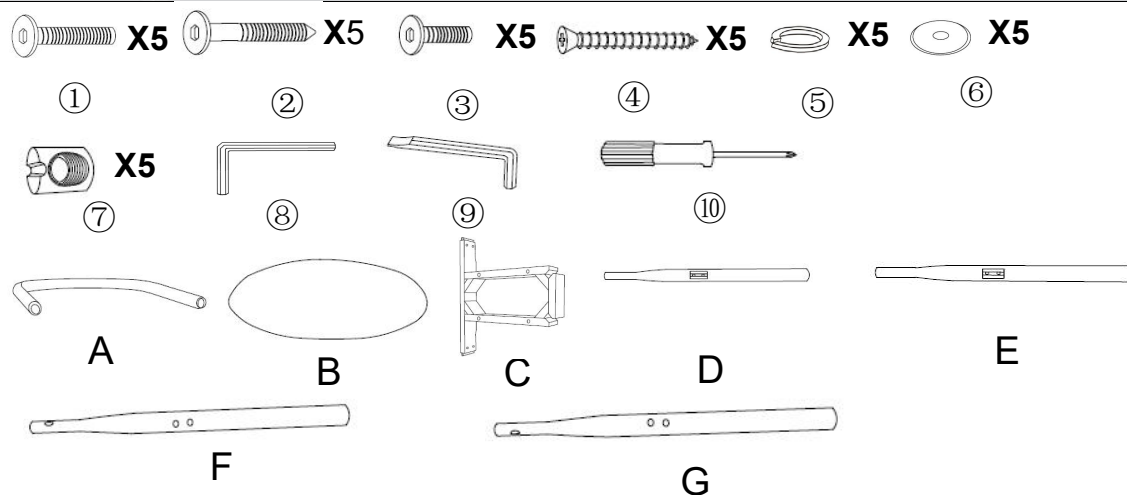
| Label | Picture   | Description      | QTY |
|-------|---|------------------|-----|
| A     |  | Backrest         | 1   |
| B     |  | Seat Cushion     | 1   |
| C     |  | Connecting Frame | 1   |
| D     |  | Left Front Leg   | 1   |
| E     |  | Right Front Leg  | 1   |
| F     |  | Left Rear Leg    | 1   |
| G     |  | Right Rear Leg   | 1   |

# Hardware

| Label | Picture   | Description     | QTY |
|-------|---|-----------------|-----|
| ①     |  | Bolt (M8X70mm)  | 5   |
| ②     |  | Bolt (M6X60mm)  | 5   |
| ③     |  | Bolt (M6X55mm)  | 5   |
| ④     |  | Screw           | 5   |
| ⑤     |  | Spring Washer   | 5   |
| ⑥     |  | Flat Washer     | 5   |
| ⑦     |  | Cam Lock        | 5   |
| ⑧     |  | Allen Wrench*M8 | 1   |
| ⑨     |  | Allen Wrench*M6 | 1   |
| ⑩     |  | Screwdriver     | 1   |

## Assembly Preparation

Before Beginning Assembly:



- Read instructions, cover to cover-



- Have 2 adults on hand for assembly-



- Do not assemble on flooring or carpet-



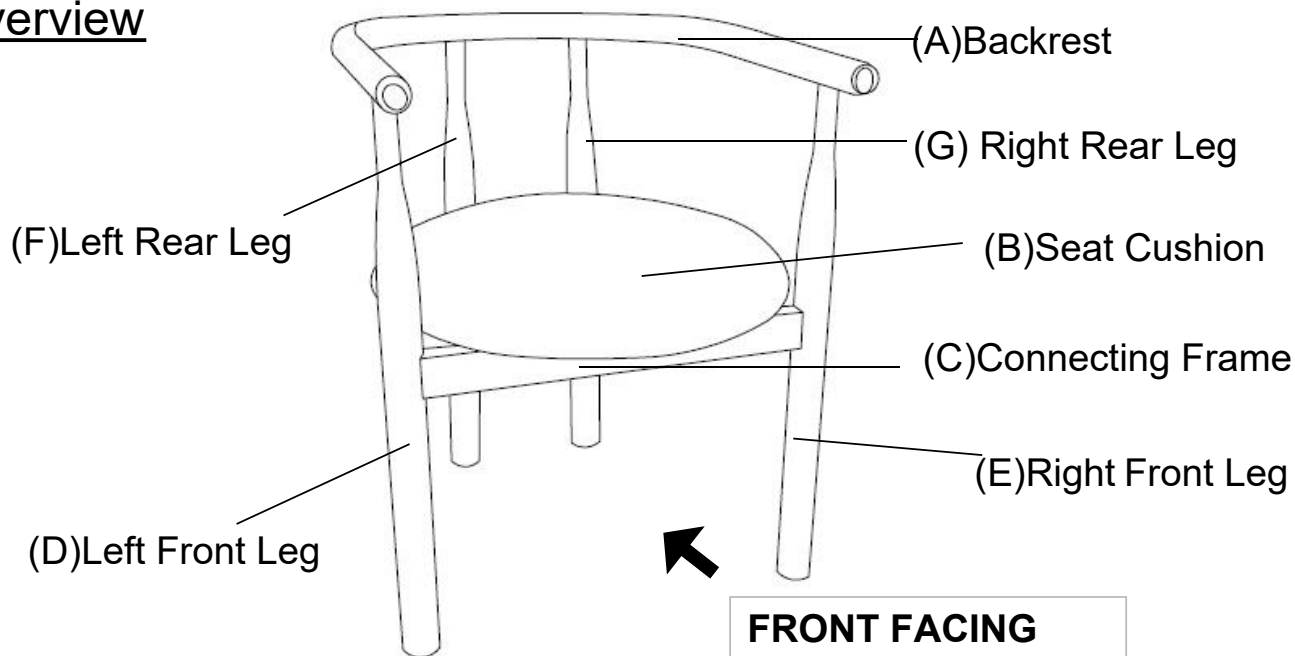
- Assemble on a clean non-marring surface (packing foam)-



- Save all packaging until finished-

# Assembly Steps

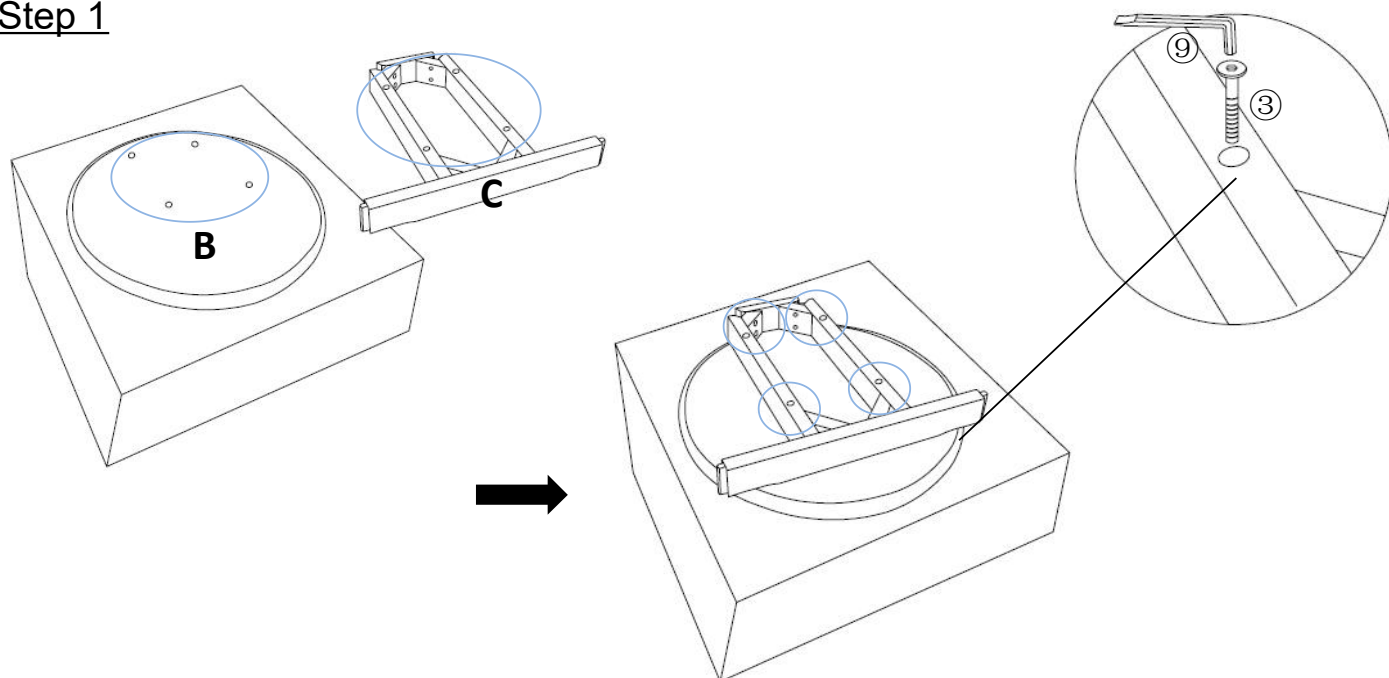
## Overview



This Chair has multiple parts and may require up to 30 minutes to assemble. To give you an overview of the Chair parts, the above picture is provided to help you put the various parts into perspective. Please read through the instructions below to familiarise yourself with the parts and steps before assembly.

Friendly reminder: Tighten all the screws after all holes are installed.

## Step 1

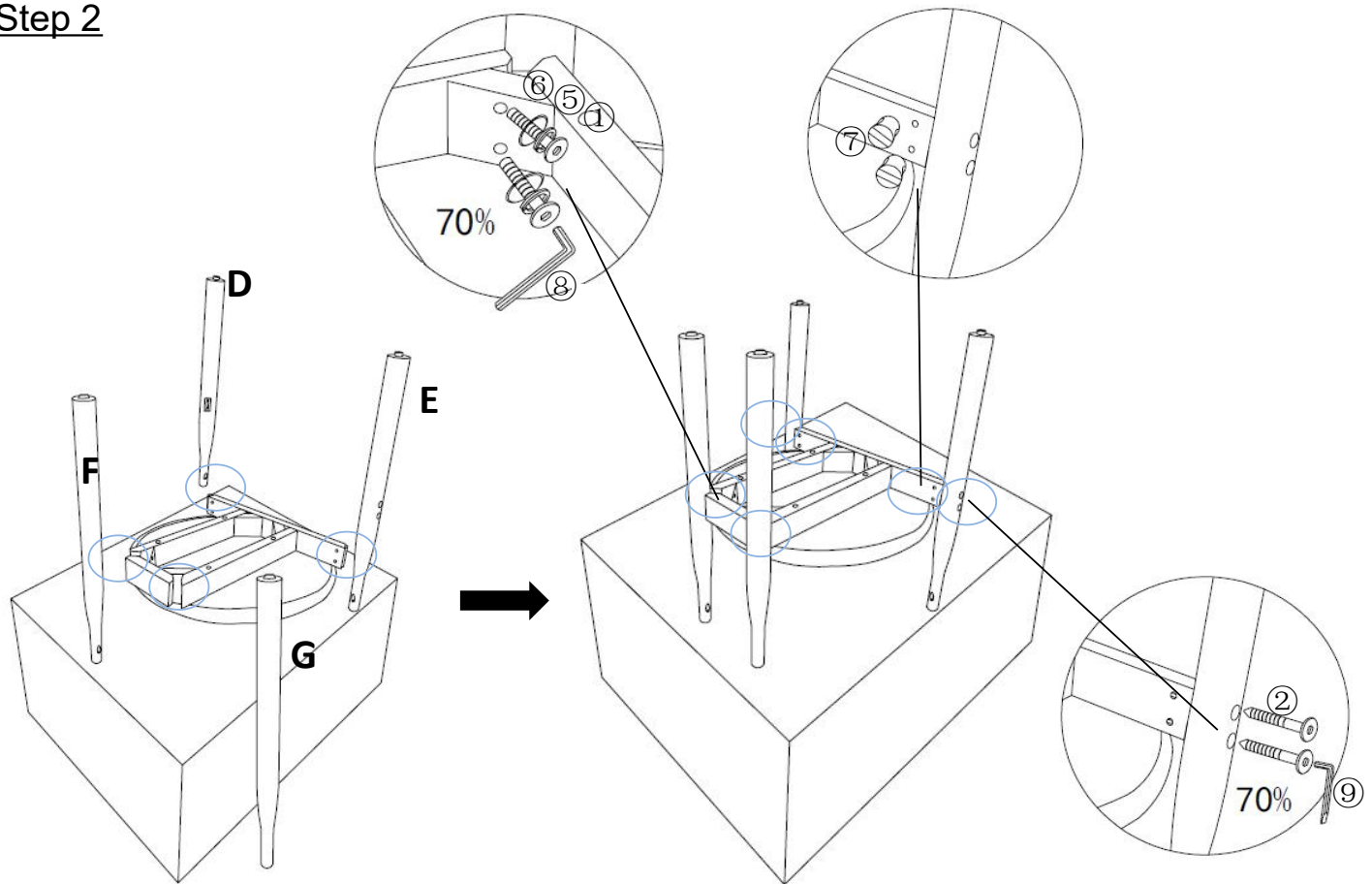


Open the carton, and place all parts on a clean, non-marring surface.

Take out Seat Cushion(B) and Connecting Frame(C).

Align the holes of Seat Cushion(B) with those of Connecting Frame(C) as shown, using Bolt (③) with Allen Wrench(⑨) to tighten it.

## Step 2



Take out 4 legs(D/E/F/G).

### Step 2.1

Use the short ends of the Connecting Frame(C) to join Left Rear Leg(F) and Right Rear Leg(G) (the Connecting Frame(C) are equipped with a recessed structure)

Align the holes of Rear Legs F and G with the corresponding holes inside the grooves of the Connecting Frame(C) as shown.

Use Bolt(①), Spring Washer(⑤) and Flat Washer(⑥) with Allen Wrench(⑧) to lock it.

**Do not fully tighten the Bolts.**

### Step 2.2

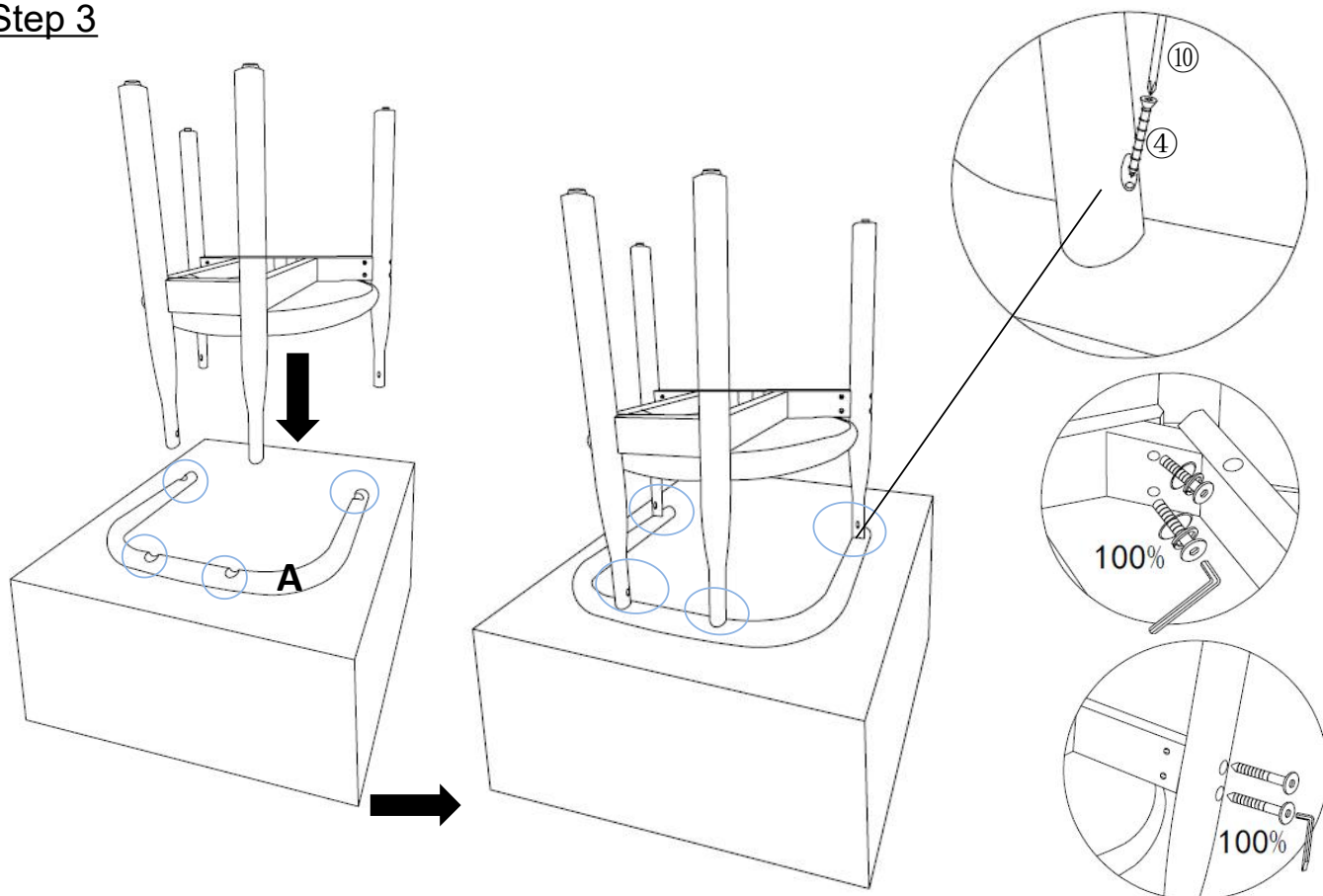
Align the sockets on both sides of Left Front Leg(D) and Right Front Leg(E) with the protruding parts on the long ends of the Connecting Frame(C) respectively, insert them fully until a secure fit is achieved.

Insert Cam Lock(⑦) into each of the holes on the inner sides of the Connecting Frame (C), make the Cam lock in a straight line.

Insert Bolt(②) into the exposed holes of Left Front Leg (D) and Right Front Leg (E) respectively with Allen Wrenc(⑨) to lock it .

**Do not fully tighten the Bolts.**

### Step 3



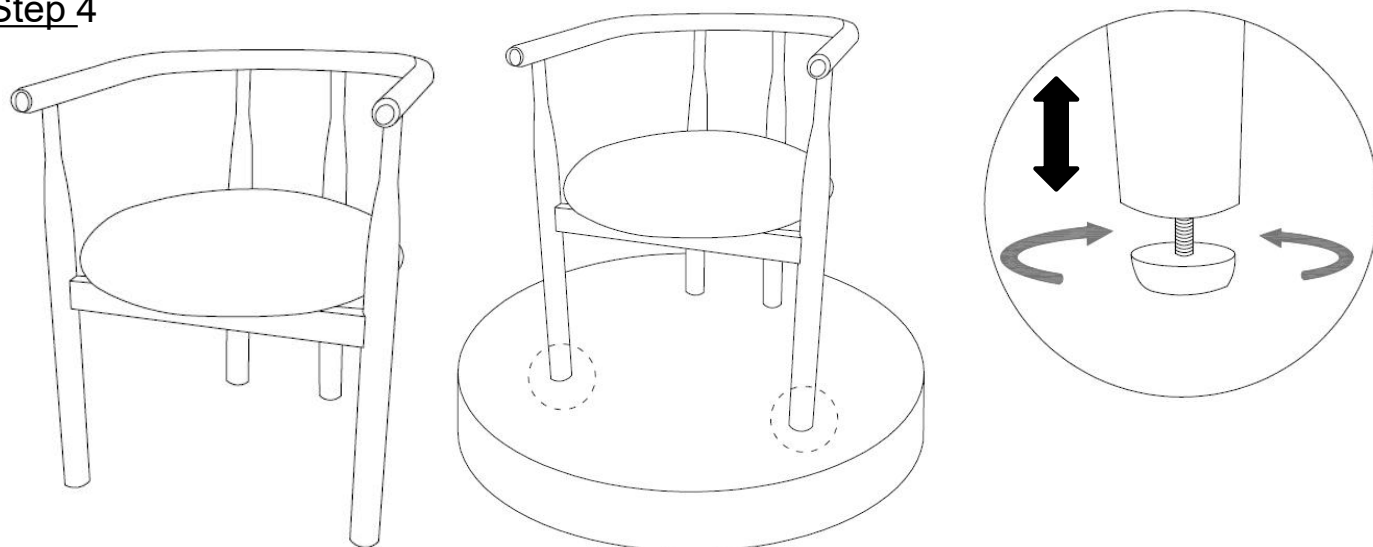
Take out Backrest(A).

Align the top of the pre-assembled legs with the 4 holes on Backrest(A), insert them fully and lock them in place.

Then insert Screw(④) into the exposed holes of the legs as shown ,with Screwdriver(⑩) to tighten it.

**Fully Tighten all the bolts.**

### Step 4



Place the Chair right side up and tested for stability.

**Adjust the levelers on the legs to ensure chair stability.**

Your Chair is ready for use.

This CHAIR can only be used on a flat, level surface.



## Questions & Answers about Proposition 65

- What is Proposition 65?

Proposition 65 requires businesses to provide warnings to Californians about significant exposures to chemicals that cause cancer, birth defects or other reproductive harm. These chemicals can be in the products that Californians purchase, in their homes or workplaces, or that are released into the environment. By requiring that this information be provided, Proposition 65 enables Californians to make informed decisions about their exposures to these chemicals.

Proposition 65 also prohibits California businesses from knowingly discharging significant amounts of listed chemicals into sources of drinking water.

Proposition 65 requires California to publish a list of chemicals known to cause cancer, birth defects or other reproductive harm. This list, which must be updated at least once a year, has grown to include approximately 900 chemicals since it was first published in 1987.

- What types of chemicals are on the Proposition 65 list?

The list contains a wide range of naturally occurring and synthetic chemicals that include additives or ingredients in pesticides, common household products, food, drugs, dyes, or solvents. Listed chemicals may also be used in manufacturing and construction, or they may be byproducts of chemical processes, such as motor vehicle exhaust.

- What does a warning mean?

If a warning is placed on a product label or posted or distributed at a workplace, a business, or in rental housing, the business issuing the warning is aware or believes that it is exposing individuals to one or more listed chemicals.

By law, a warning must be given for listed chemicals unless the exposure is low enough to pose no significant risk of cancer or is significantly below levels observed to cause birth defects or other reproductive harm.

- Where can I get more information on Proposition 65?

If you have specific questions on the administration or implementation of Proposition 65, you can contact OEHHA's Proposition 65 program at [P65.Questions@oehha.ca.gov](mailto:P65.Questions@oehha.ca.gov), or by phone at (916) 445-6900.