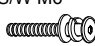
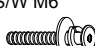


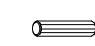


ASSEMBLY INSTRUCTIONS

MODEL : BILLIE DINING CHAIR

IMPORTANT NOTE : *

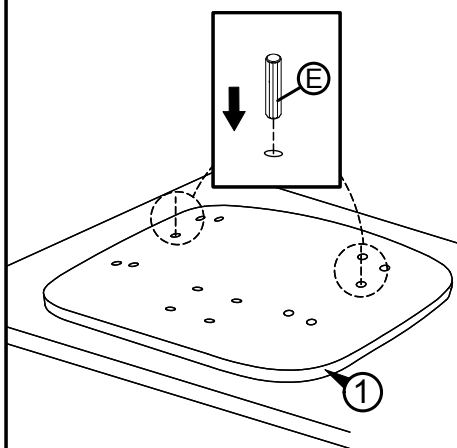
- PLACE ALL WOODEN PARTS ON A CLEAN AND SMOOTH SURFACE SUCH AS A RUG OR CARPET TO AVOID THE PARTS FROM BEING SCRATCHED.
- BEFORE YOU BEGIN, KINDLY FOLLOW THE ASSEMBLY INSTRUCTIONS STEP BY STEP.
- DO NOT TIGHTEN ALL SCREWS UNTIL THE CHAIR IS FULLY SET-UP.

HARDWARE LIST			PART LIST		
A	JCBC M6 x 30mm + S/W M6 + F/W M6 x 13mm 	8PCS	1	SEAT	1PC
B	JCBC M6 x 30mm + S/W M6 + F/W M6 x 19mm 	4PCS	2	BACK REST	1PC
C	JCBC M6 x 20mm + S/W M6 + F/W M6 x 13mm 	2PCS	3	LEG (RIGHT)	1PC
D	ALLEN KEY M4 (BALL SHAPE) 	1PC	4	LEG (LEFT)	1PC
E	DOWEL M8 x 20mm 	4PCS	5	TOP REST	1PC

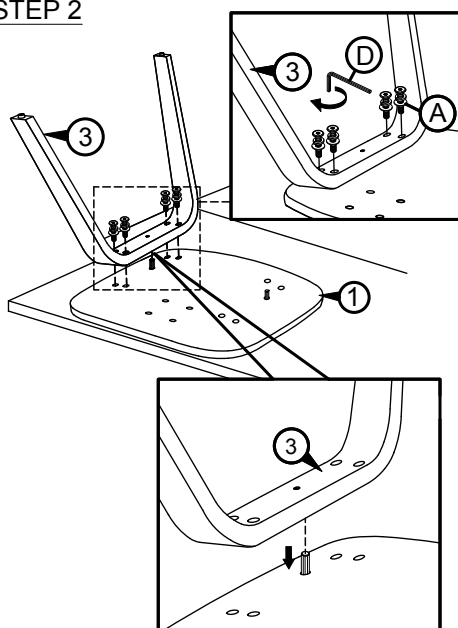
CAUTIONS :

- (1) DO NOT FULLY-TIGHTEN THE NUT OR NUT BOLTS INITIALLY UNTIL ALL NUTS OR BOLT IS READY ASSEMBLED.
(TO AVOID CAUSING DAMAGES TO THE THREAD, DO NOT OVER-TIGHTEN THE NUTS OR BOLTS.)
- (2) KEEP ALL HARDWARE PART OUT OF REACH OF CHILDREN.

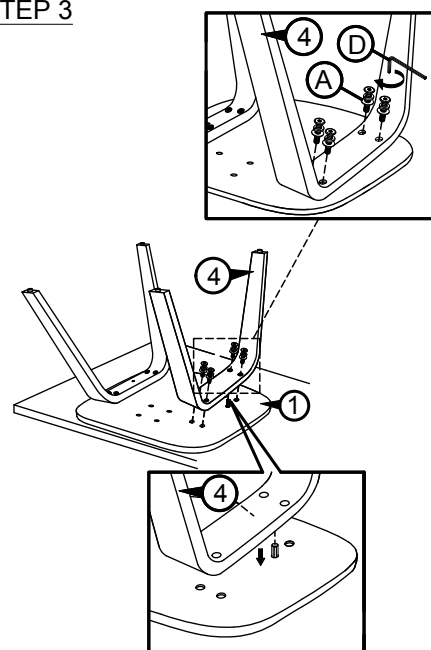
STEP 1



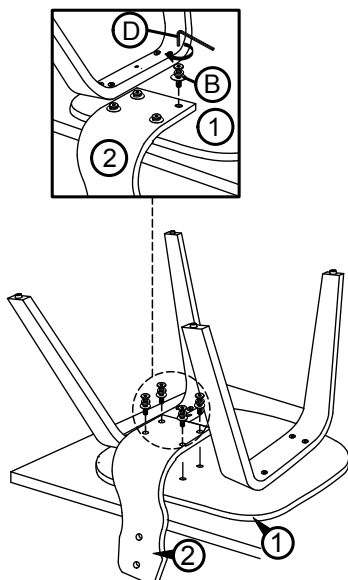
STEP 2



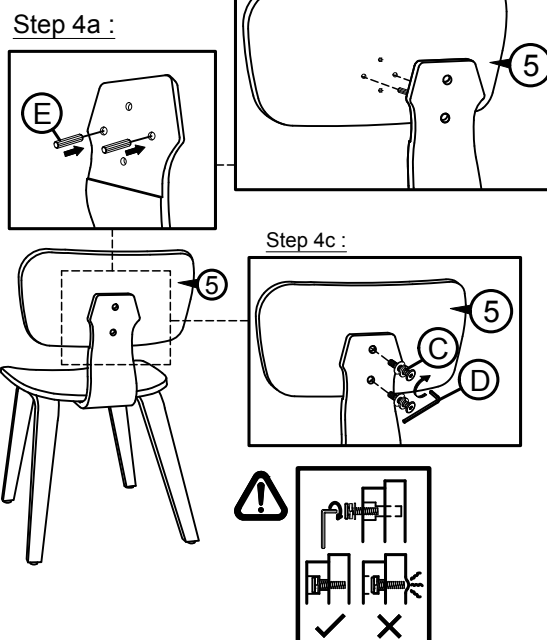
STEP 3



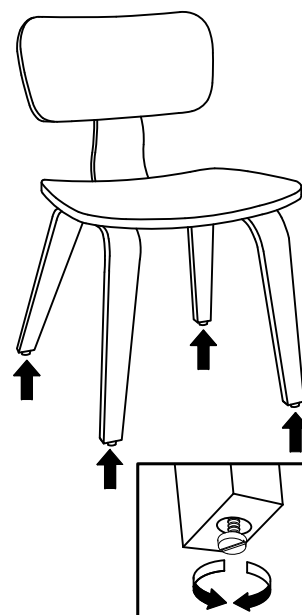
STEP 4



STEP 5



STEP 6



Turn clockwise or anti-clockwise to adjust leg leveller.

ASSEMBLY INSTRUCTIONS

MODEL : BILLIE RECTANGULAR DINING TABLE

IMPORTANT NOTE :

- * PLACE ALL WOODEN PARTS ON A CLEAN AND SMOOTH SURFACE SUCH AS A RUG OR CARPET TO AVOID THE PARTS FROM BEING SCRATCHED.
- * BEFORE YOU BEGIN, KINDLY FOLLOW THE ASSEMBLY INSTRUCTIONS STEP BY STEP.

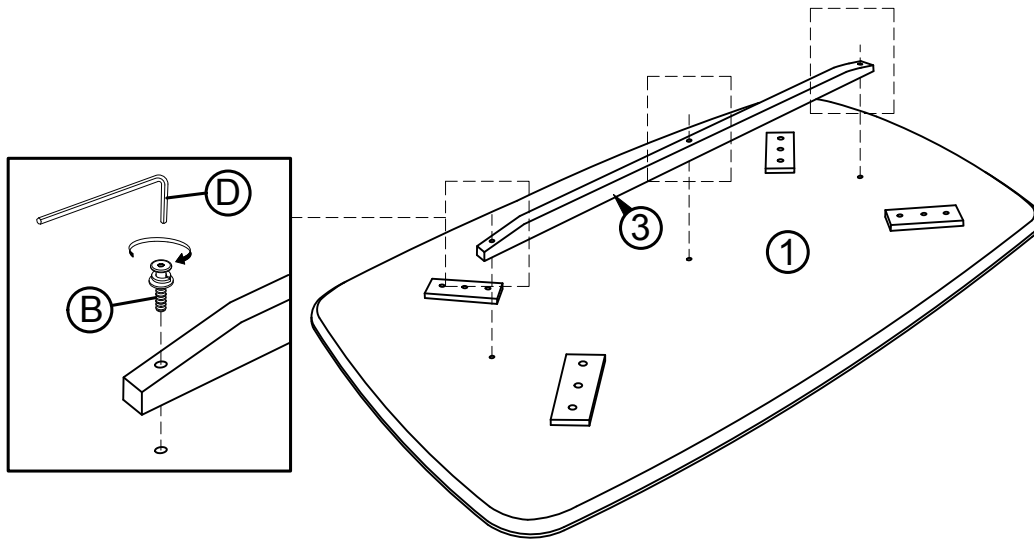
HARDWARE LIST		
A	JCBB M8 x 50mm + S/W 5/16" + F/W 5/16" x 22mm	12PCS
B	JCBC M6 x 40mm + S/W M6 + F/W M6 x 13mm	3PCS
C	ALLEN KEY M5	1PC
D	ALLEN KEY M4 (Ball Shape)	1PC

PART LIST		
1	TABLE TOP	1PC
2	TABLE LEG	4PCS
3	TOP STRETCHER	1PC



COMPLETED TABLE ASSEMBLY.

STEP 1



STEP 2

