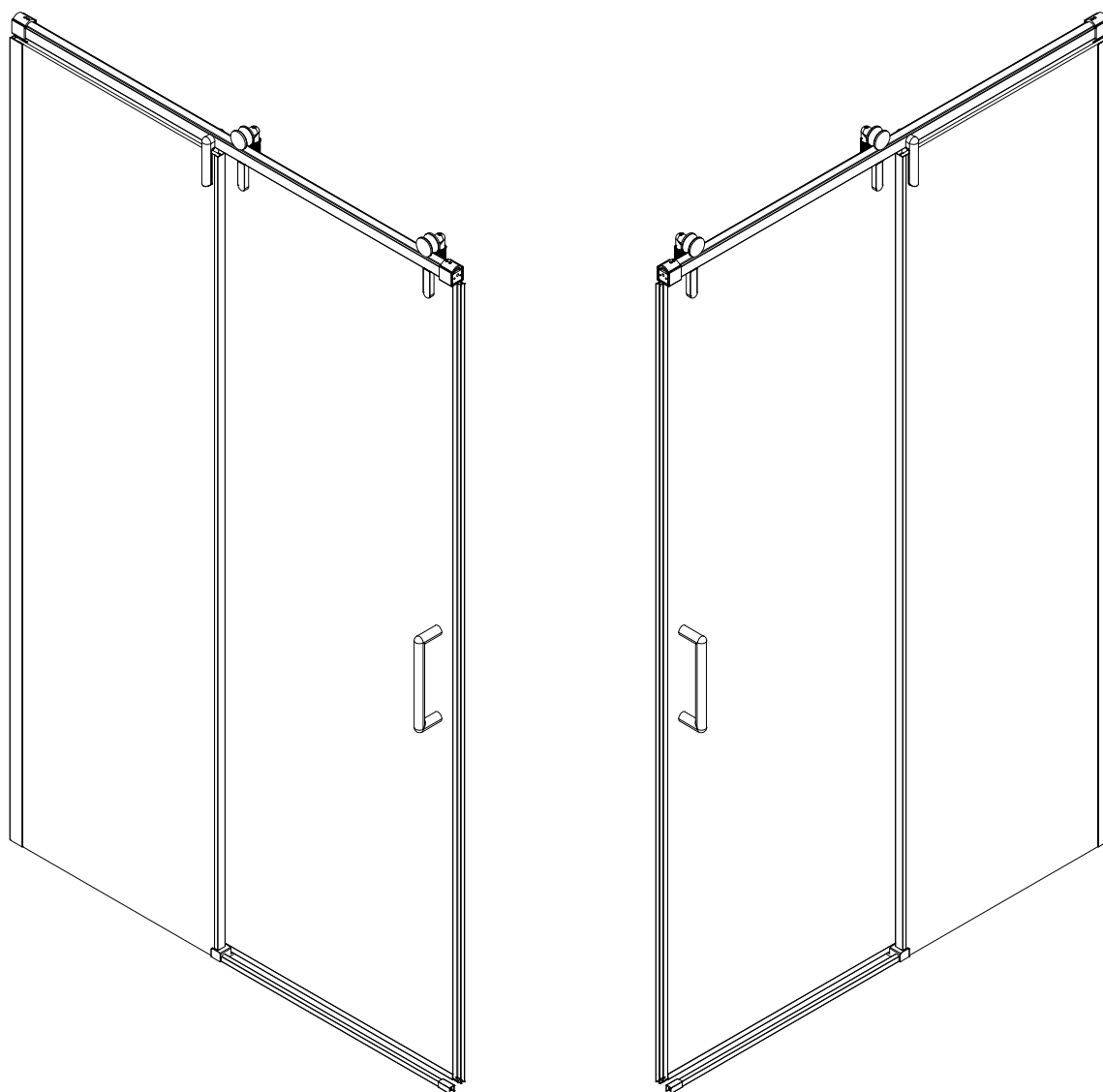


Serial Number : SDS18-29  
R 1.0

## Shower Door Installation Instructions



Please do not return the product to the store.  
Contact us with any questions.

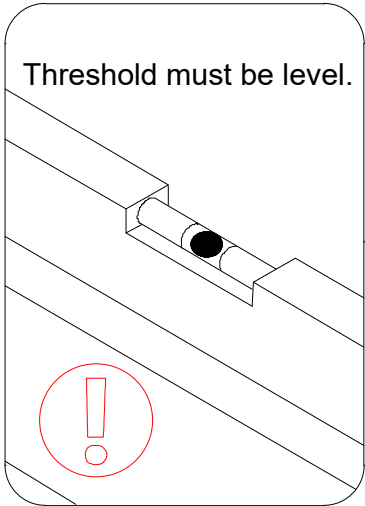
# Model Specific Preparation



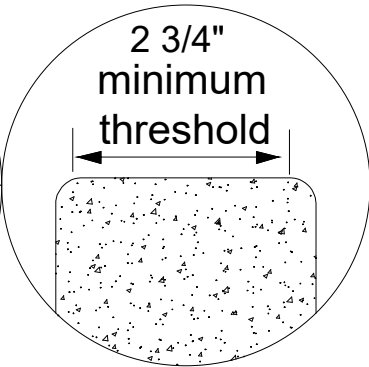
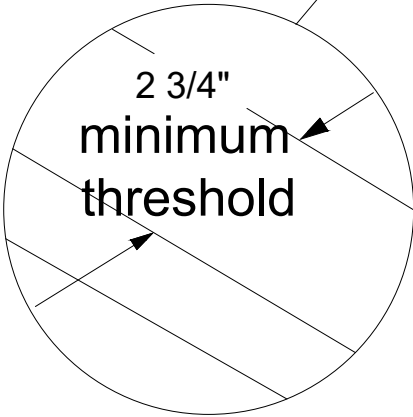
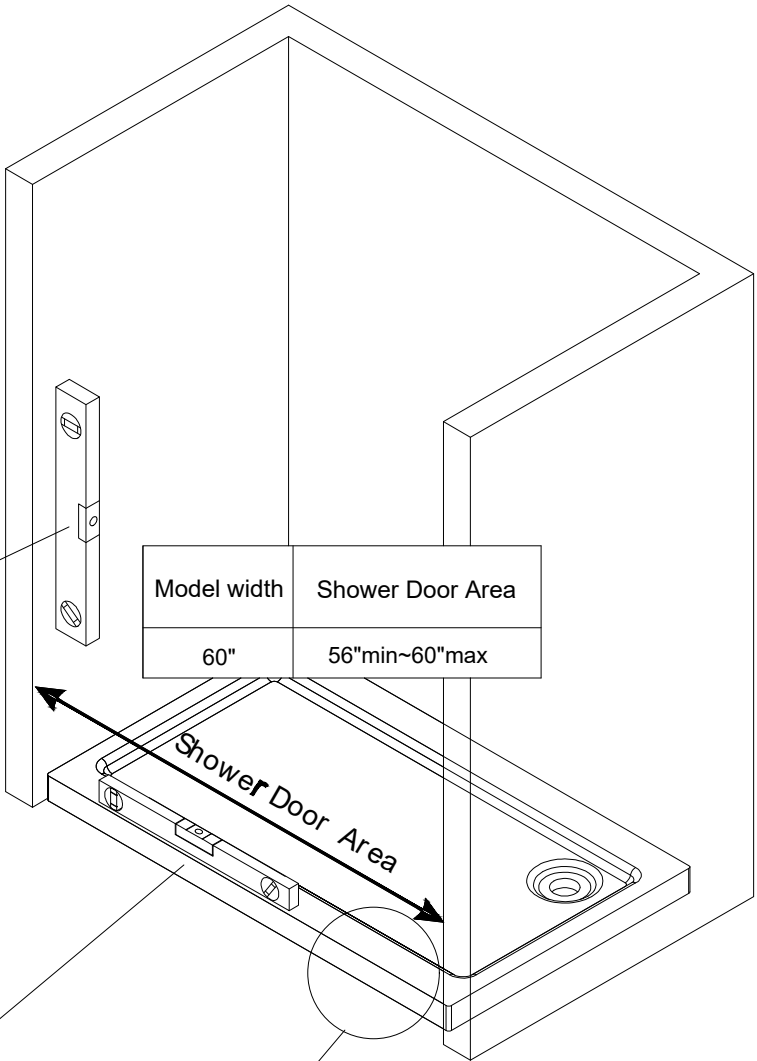
**REQUIRED:**

Verify threshold and wall with a level.

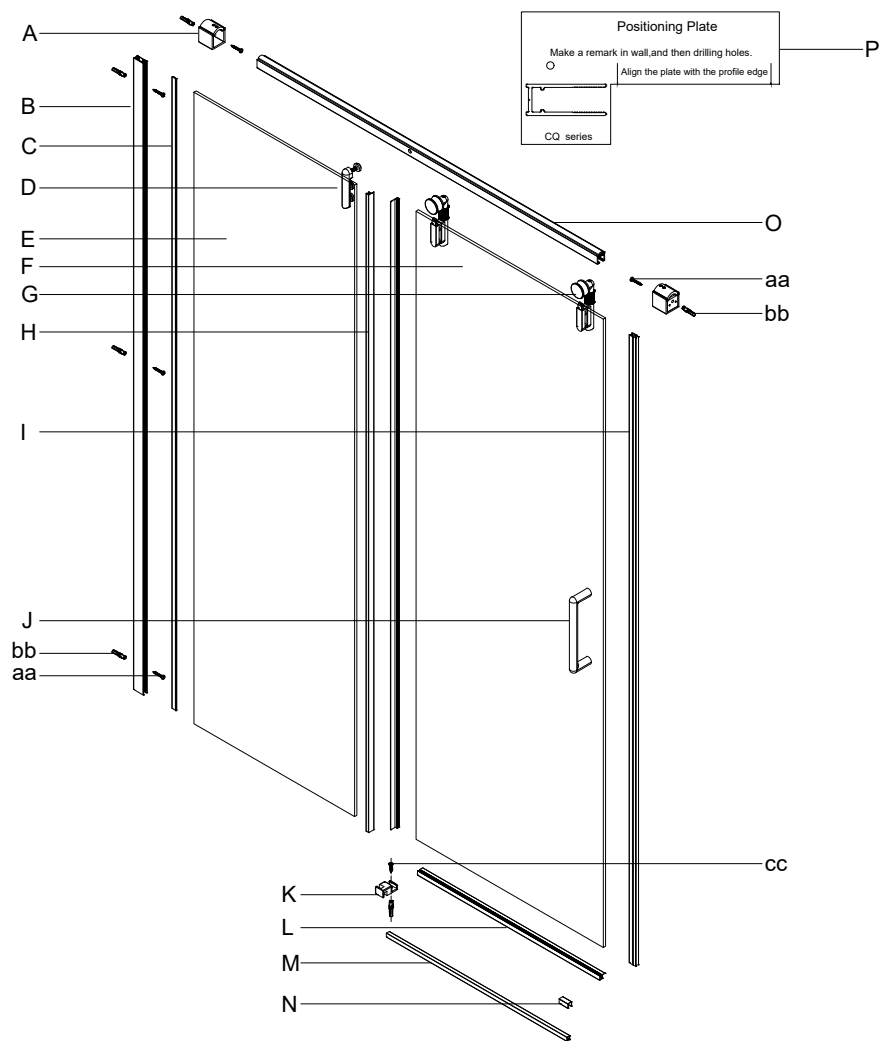
5/16"(8mm) Maximum out of plumb adjustment from top to bottom



Threshold must be level.



PACKAGE CONTENT



PACKAGE CONTENT

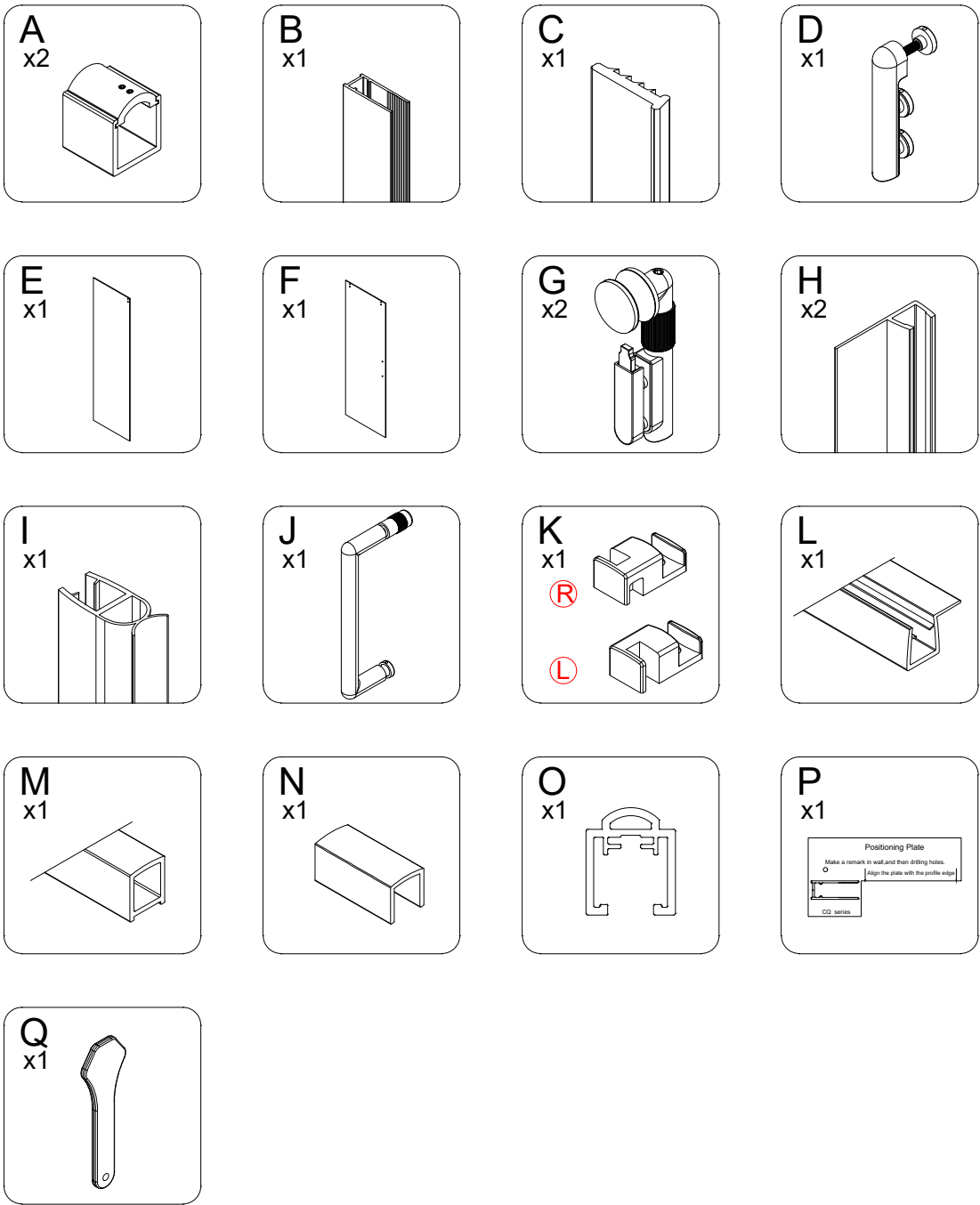
PART#	DESCRIPTION	QTY
A	Upper wall base	2
B	Wall Jamb	1
C	Single side adhesive strip	1
D	Solid glass continuous pull parts	1
E	Front Panel	1
F	Door Panel	1
G	Roller	2
H	Anti-water strip	2

PART#	DESCRIPTION	QTY
I	Door side buffer rubber strip	1
J	Handle	1
K	Guide Block	1
L	Bottom water-blocking rubber strip	1
M	Water-blocking aluminum material	1
N	End block	1
O	Upper Guide Rail	1
P	Positioning Plate	1
Q	Rubber strip scraper	1

NOTE

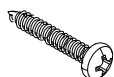
Inspect all parts for missing prior to installation!  
Contact us for any part missing.

PACKAGE CONTENT



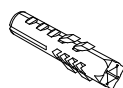
## HARDWARE CONTENT

aa



Screw  
ST4X30mm  
5pcs

bb



Wall anchor  
Ø6X30mm  
6pcs

cc



Screw  
ST4X25mm  
1pc

NOTE

Inspect all parts for missing prior to installation!  
Contact us for any part missing.

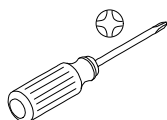
## TOOLS REQUIRED

**Drill Bits**



Drill Bits: 1/8" (3mm) and 1/4" (6mm) HSS

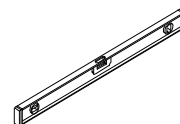
**Phillips screw driver**



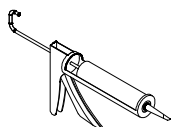
**Electric hand drill**



**Level**



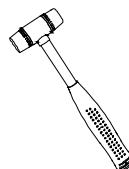
**Caulking gun**



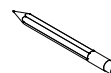
**Measuring Tape**



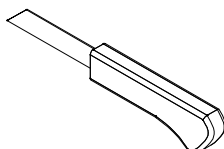
**Soft Head Hammer**



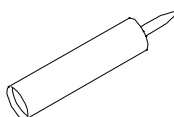
**Marking Pencil**



**Utility Knife**



**Sealant**



**MASONRY DRILL BIT FOR TILE  
Ø6mm**



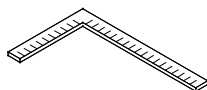
**Safety Glasses**



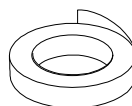
**Gloves**



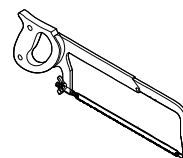
**Carpenter's Squarer**



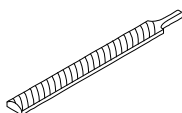
**Masking or painter's tape**



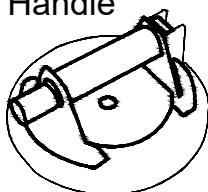
**Hack Saw**



**Metal File**



**Glass suction Handle**



## SAFETY INFORMATION

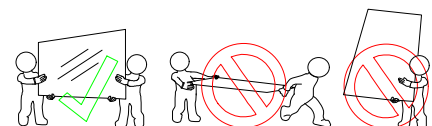
### CAUTION

Please carefully read the following important safety information before handling or installing this shower door. There is a risk of serious injury while handling this product.

To minimize these risks, please note:

- Always wear safety glasses and gloves while handling.
- Always follow the installation instructions.
- Inspect glass for damage before installation.
- Extreme caution should be taken while handling the glass during installation as the tempered glass may shatter if in contact with a hard surface.
- Do not cut or modify the tempered glass as it will shatter if cut.
- Carefully remove product from packaging and keep packaging until installation is complete.
- Inspect all parts for damage or missing; if there is damage or part missing to the unit prior to installation, please contact customer service at the number provided in this guide.
- Cover the drain with tape to prevent the loss of small parts.
- The shower base and finished walls should be installed before beginning the shower door installation.
- During the installation, protect the shower floor with a drop cloth to avoid damage.
- This product should be installed by two people who are familiar with construction requirements. Professional installation is recommended!
- Keep this installation manual for future reference.

**NOTE:** Two people should perform this installation.

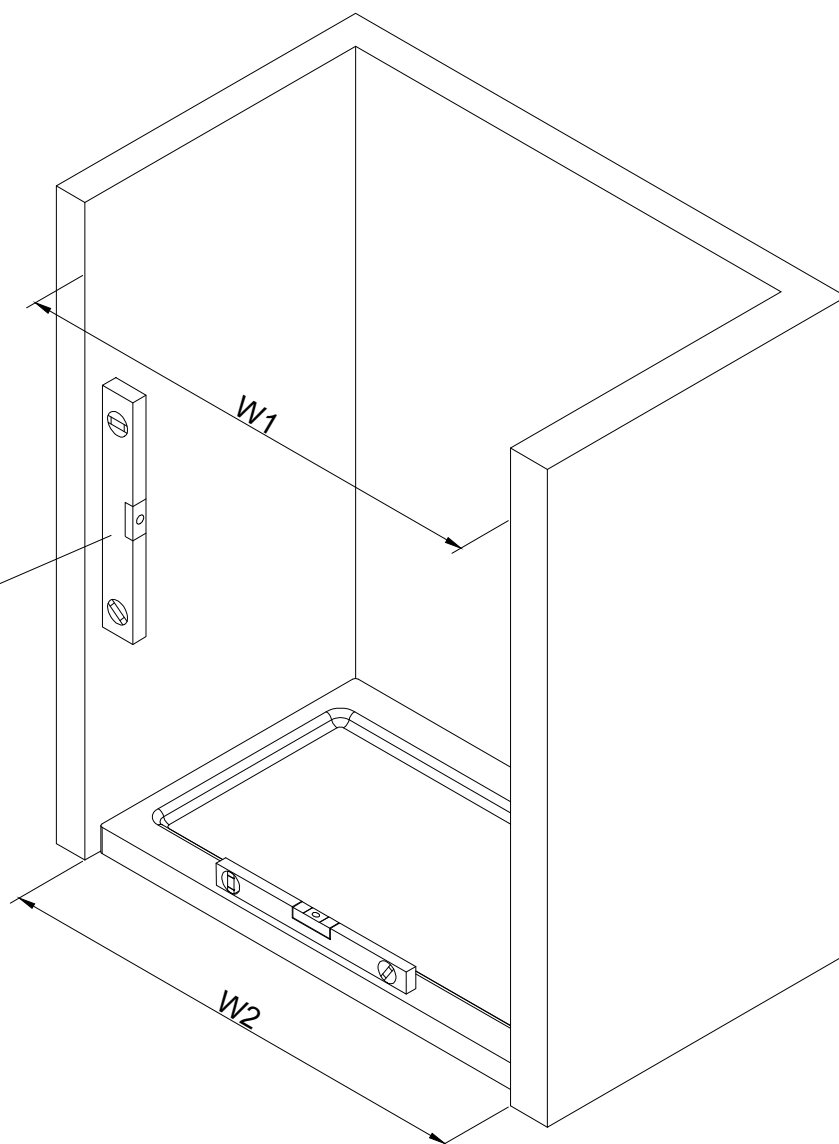


## 1

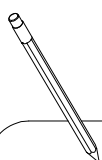
Measure the finished opening width at the top and at the bottom.

NOTE

1. Measure the finished opening width at the top and bottom. Use these dimensions as "W1"(top) and "W2"(bottom) in step#2.
2. Also check the threshold for level and the walls for plumb.



5/16"(8mm) Maximum out of plumb adjustment from top to bottom



Finished opening top(W1)

Finished opening bottom(W2)



**2**

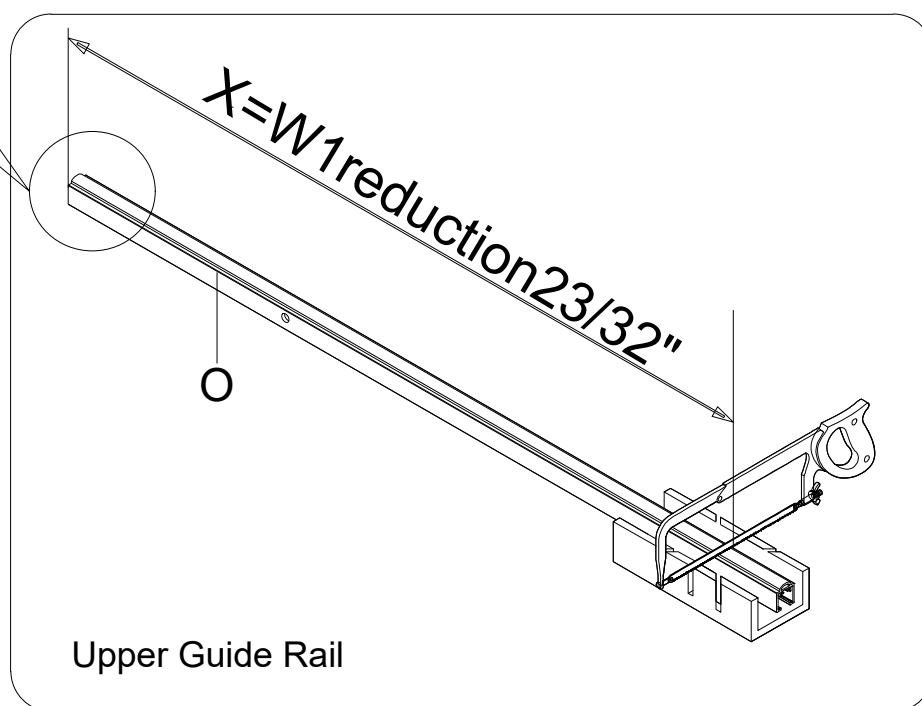
Use a miter saw or hacksaw to cut the Upper Guide Rail(O)

**NOTE**

Measure the shower room and confirm the length of the Upper Guide Rail(O)



Note: The side of the hole near the edge cannot be cut



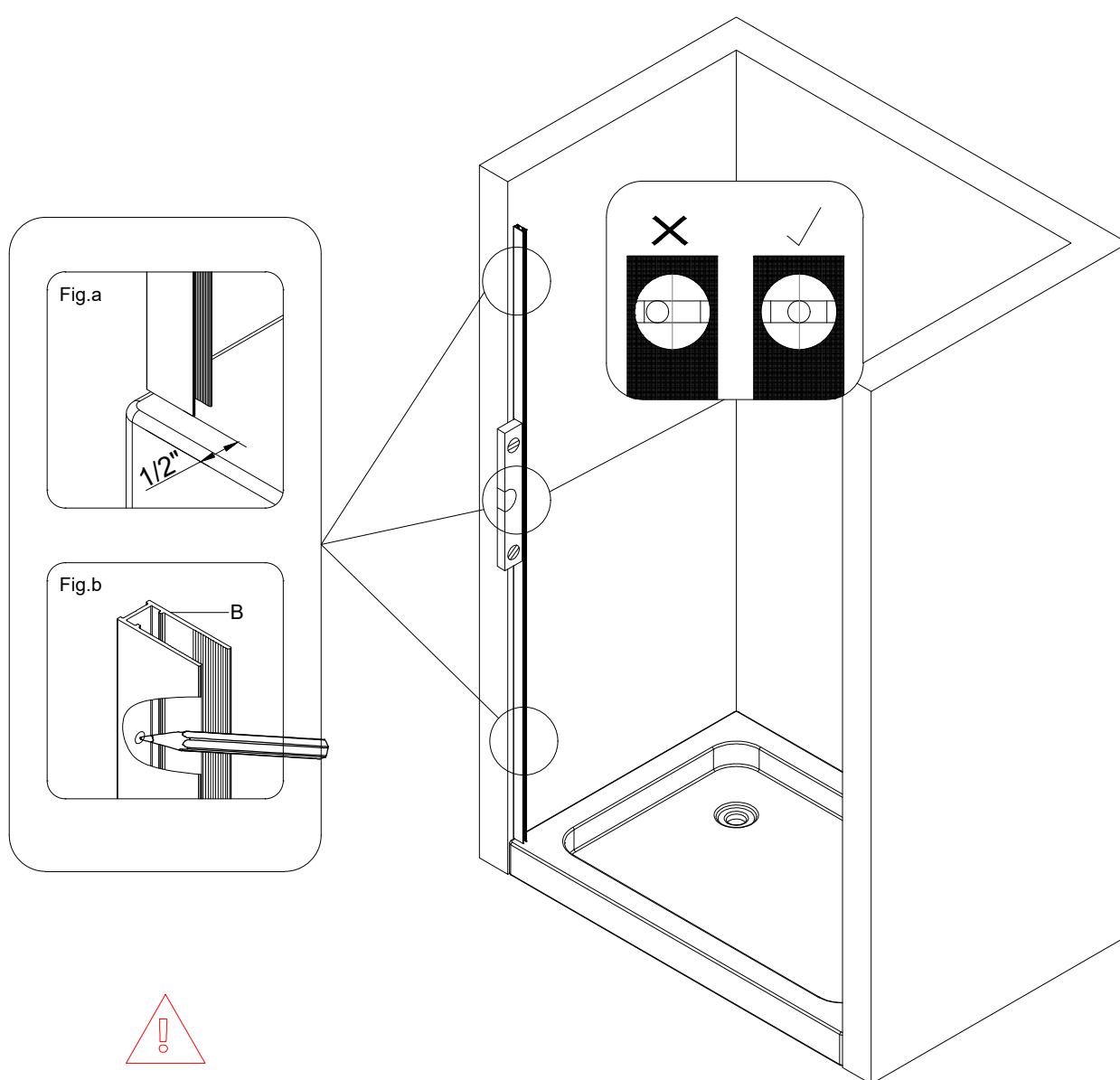
3

Determine your step in from the edge of tray and plumb your Wall Jamb(B) .

NOTE

1.Determine your starting point from the edge of tray( $1/2"$ (12mm)is recommended)and mark the position as Fig.a.

2.Plumb the Wall Jambs (B) on both sides and then mark screw holes position as Fig.b.



Note: The shower door can be installed left or right, according to the need to determine the installation direction.

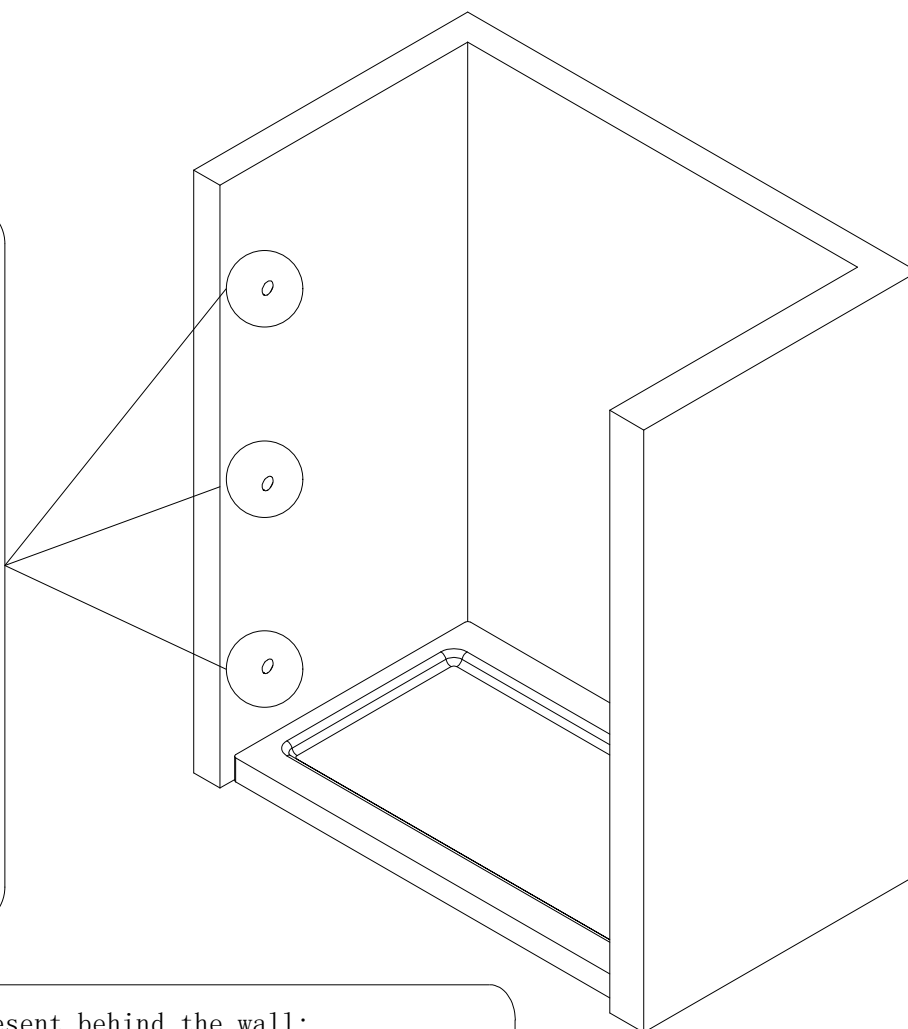
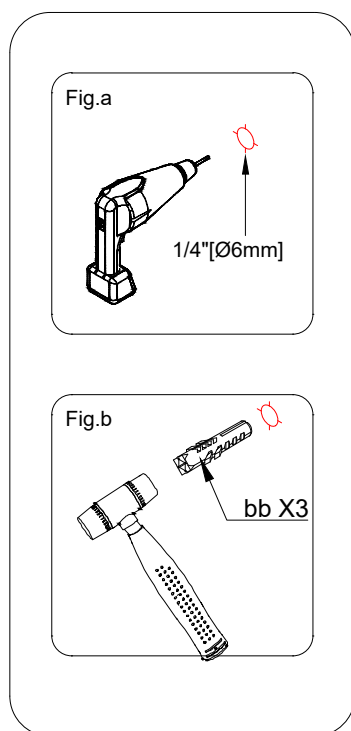
## 4 Drill screw holes for Wall Jamb(B) and insert in the Wall Anchor(bb) .

### NOTE

1. Drill holes with  $\Phi 6\text{mm}$  (1/4") drill bit as Fig.a .
2. Insert Wall Anchors(bb) as Fig.b .



Note: The shower door can be installed left or right, according to the need to determine the installation direction.

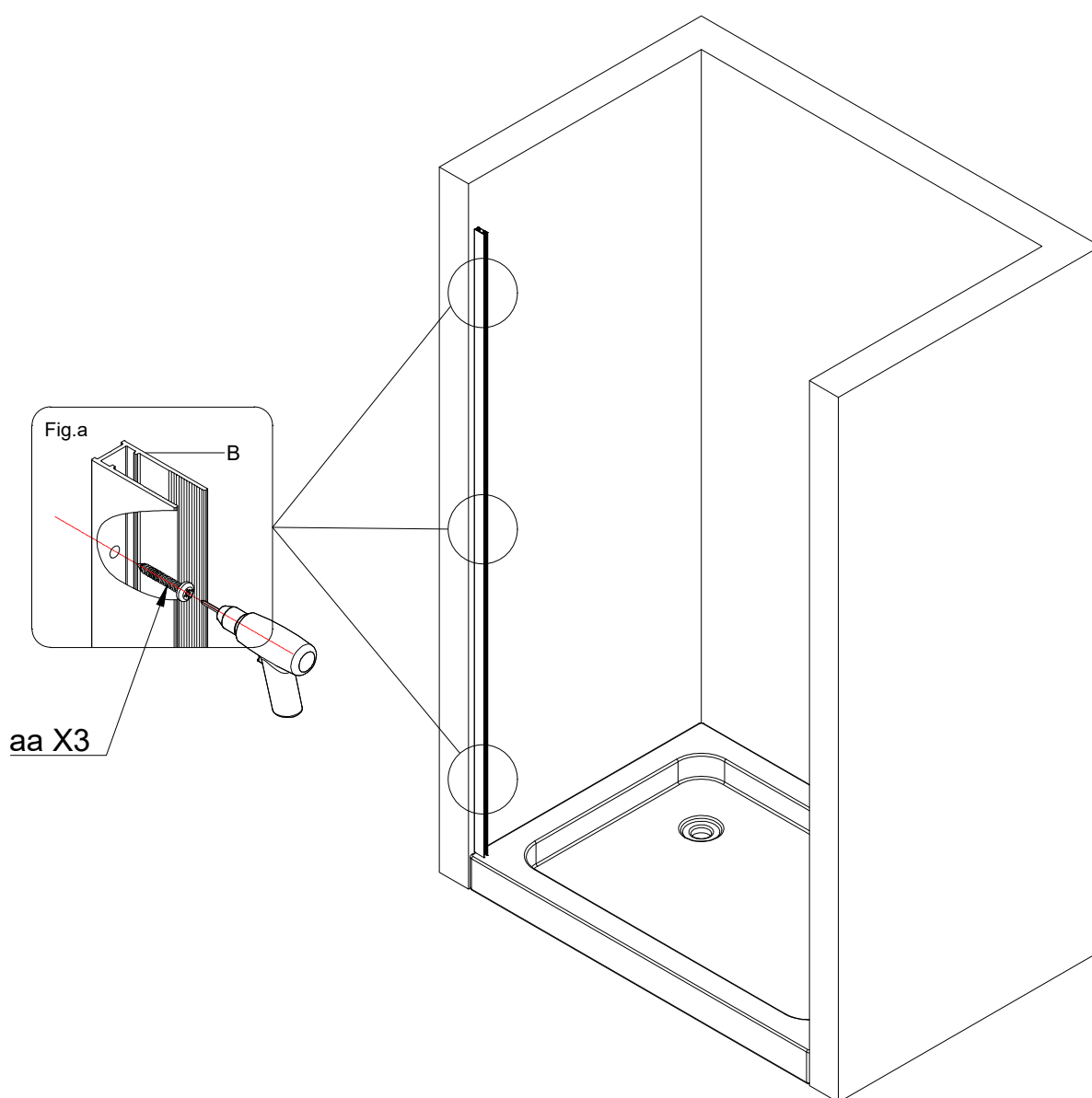


### NOTE

- If a Stud is present behind the wall:  
drill  $\phi 1/8"$  (3mm) pilot holes into the stud and use the ST4.0x30mm Screws(cc)  
OR
- If NO Stud is present behind the wall:  
drill  $\phi 1/4"$  (6mm) holes and insert the Wall Anchors(bb) and use the ST4.0x30mm Screws(cc).

**5****Install the Screws(aa).****NOTE**

Attach the Wall Jamb(B) to the wall with Screws (aa) as Fig.a.



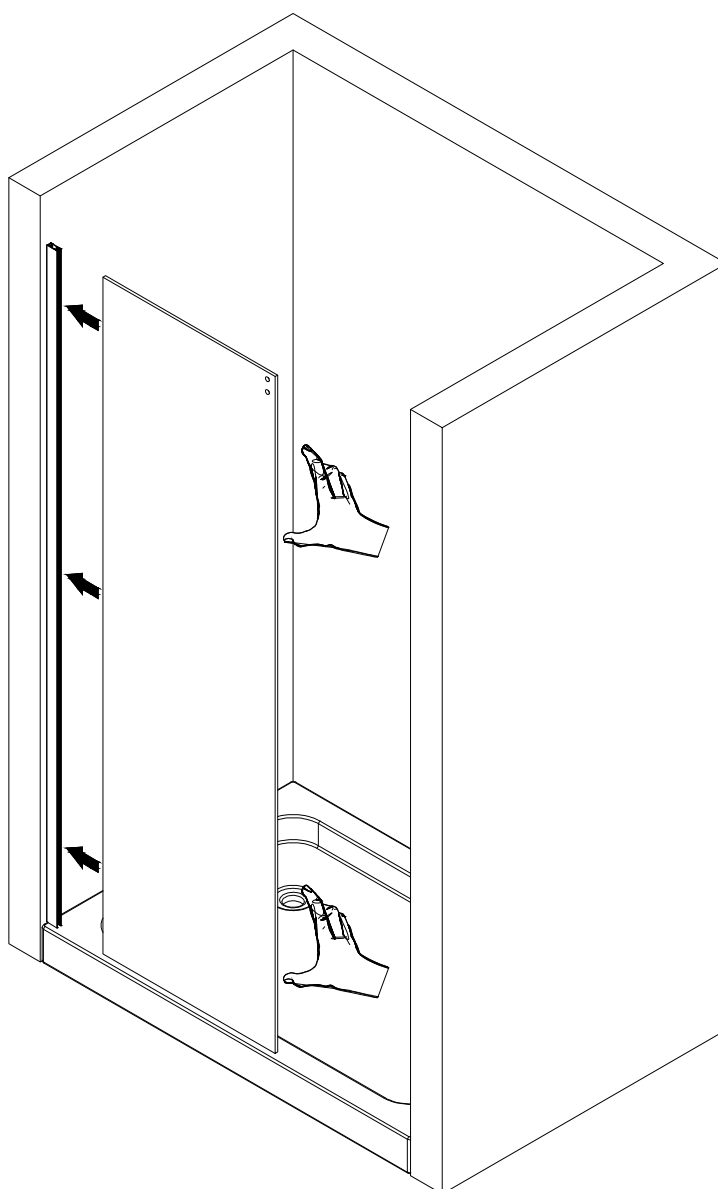
Note: The shower door can be installed left or right, according to the need to determine the installation direction.

6

## Install Stationary Door(E)

NOTE

Install the Stationary Glass(E) into the Wall Jamb(B) .



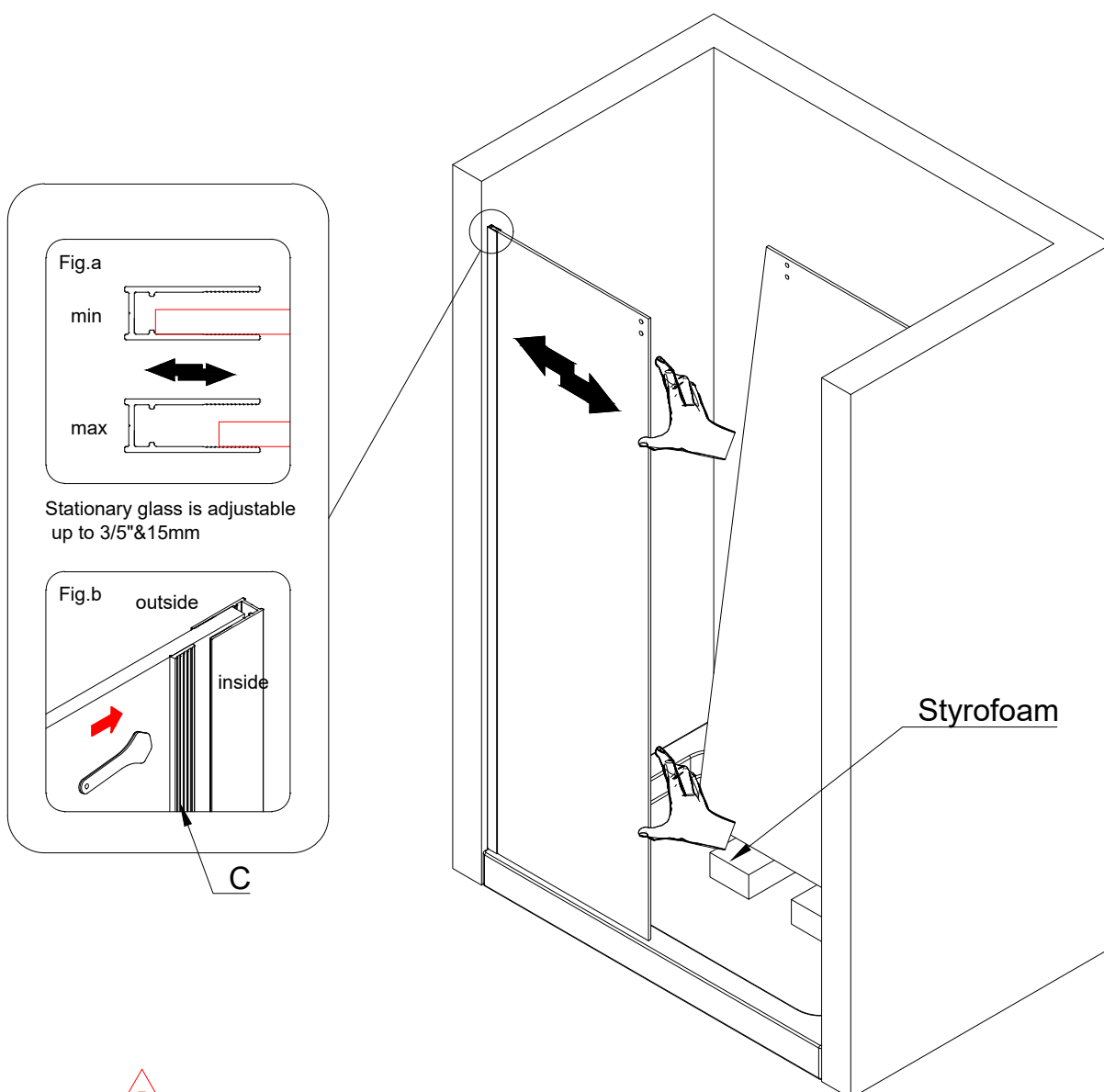
**CAUTION:** Do not put glass  
directly on the ground

## 7

## Adjust the distance of the door and place the Glass Door(F)

NOTE

Place the Door Panel (F) inside the shower area first for easier installation.



The glass door is not installed, do not remove the glass corner protector to prevent the glass from breaking



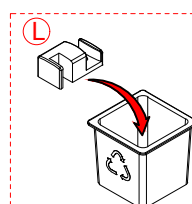
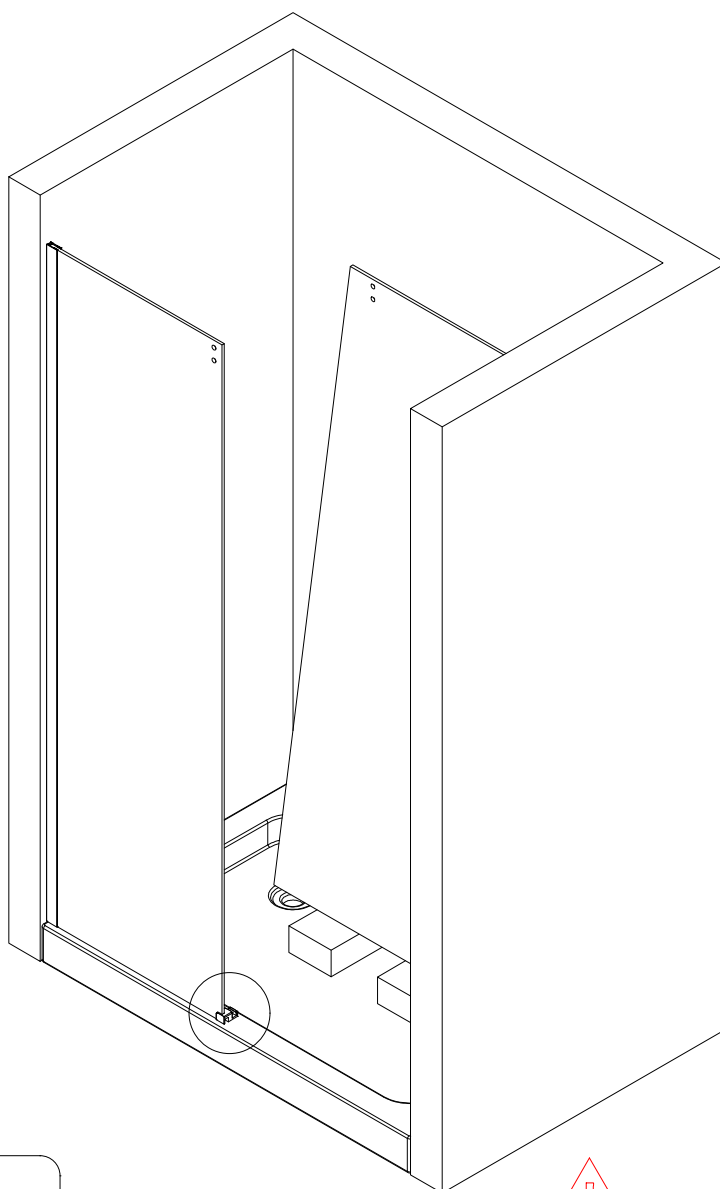
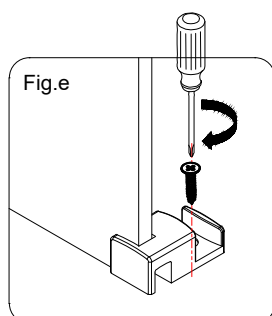
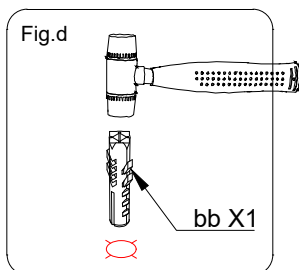
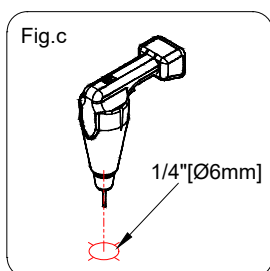
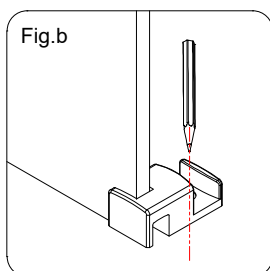
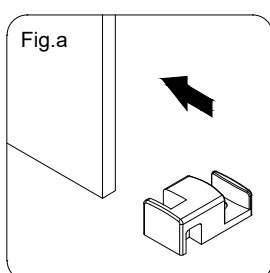
CAUTION: Do not put glass directly on the ground

## 8

## Install Guide Block(K)

## NOTE

1. Install the Guide Block(K) on the Stationary glass(E) as Fig.a .
2. Mark the holes in the Guide Block(K) with a pencil as Fig.b .
3. Drill holes with  $\phi 6\text{mm}$  (1/4") drill bit as Fig.c .
4. Insert Wall Anchors(bb) as Fig.d .
5. Secure the Guide Block(K) with Screws (cc) as Fig.e .

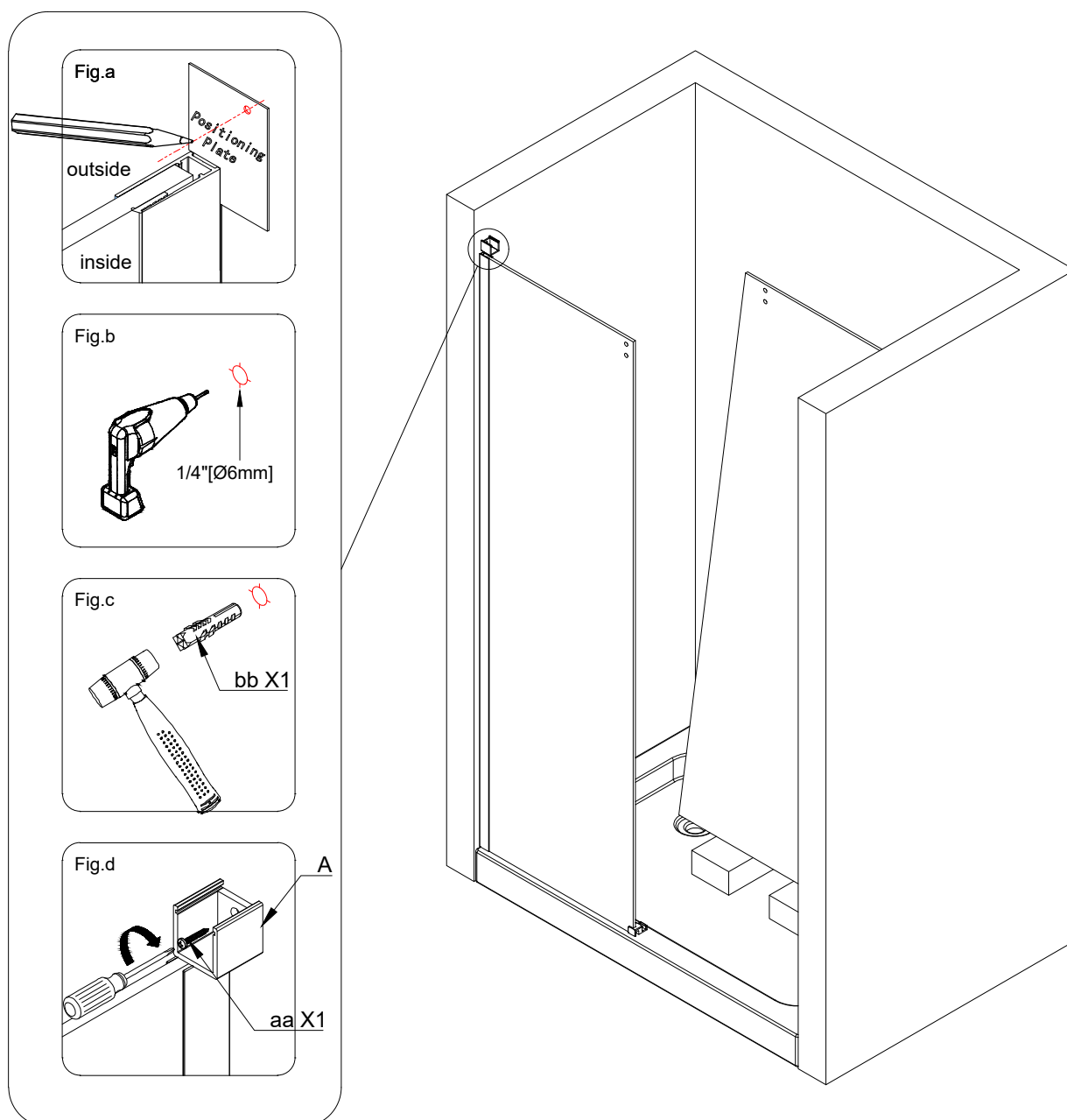


Guide blocks are provided for both left and right installations. Use the one that matches your setup.

## 9 Install Upper wall base(A)

### NOTE

1. Mark the holes in the Positioning Plate(P) with a pencil as Fig.a .
2. Drill holes with  $\phi 6\text{mm}$ (1/4") drill bit as Fig.b .
3. Insert Wall Anchors(bb) as Fig.c .
4. Secure the Upper wall base(A) with Screws (aa) as Fig.d .

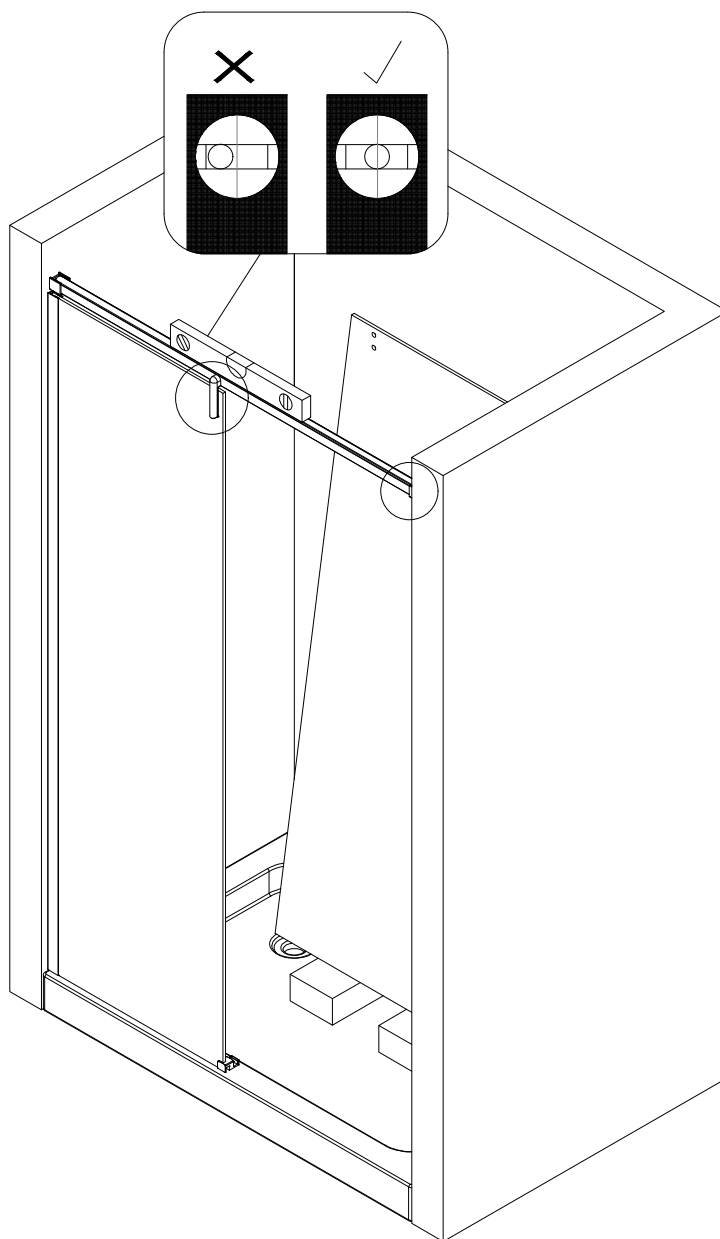
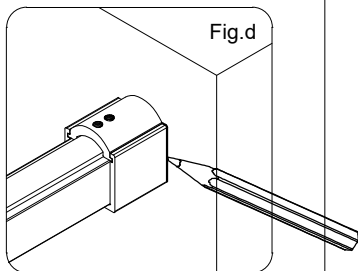
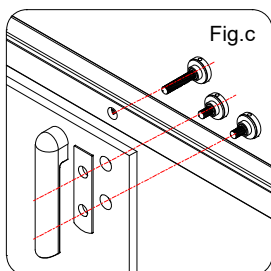
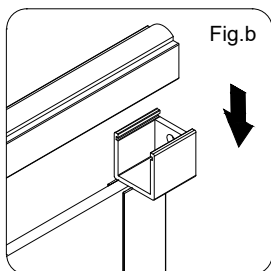
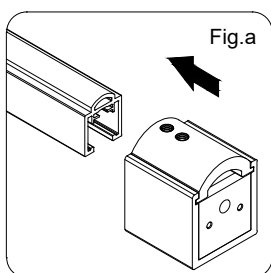




# 10 Install Upper Guide Rail(O)

NOTE

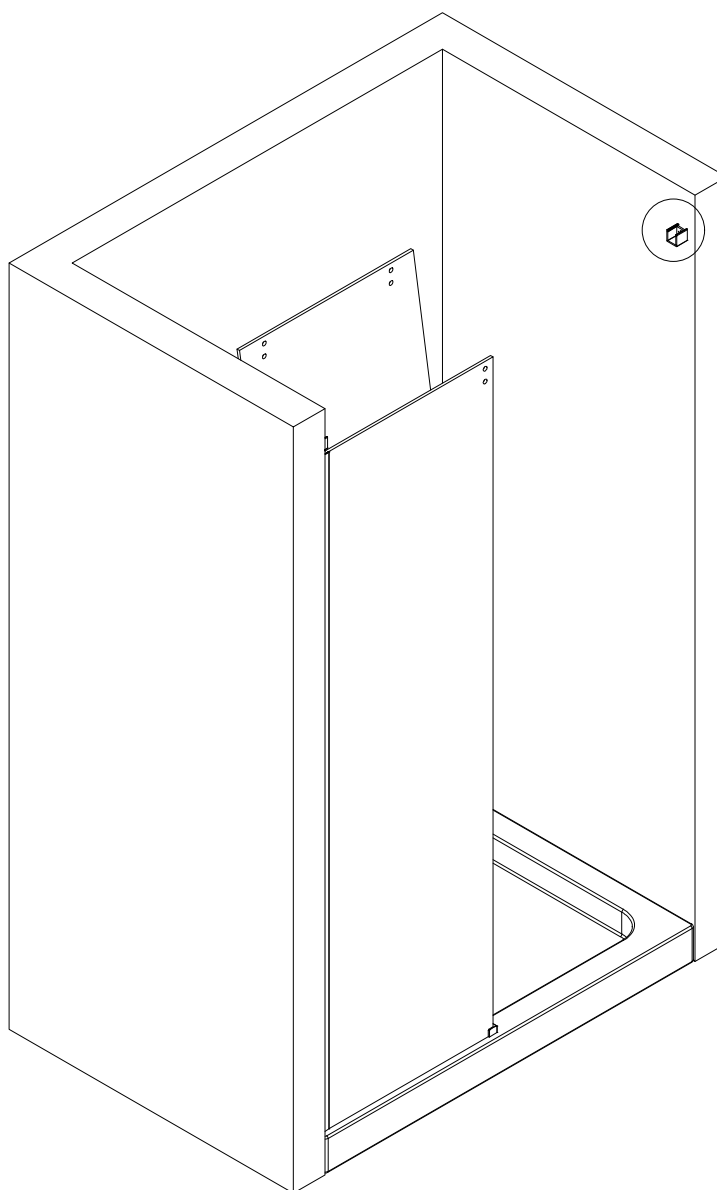
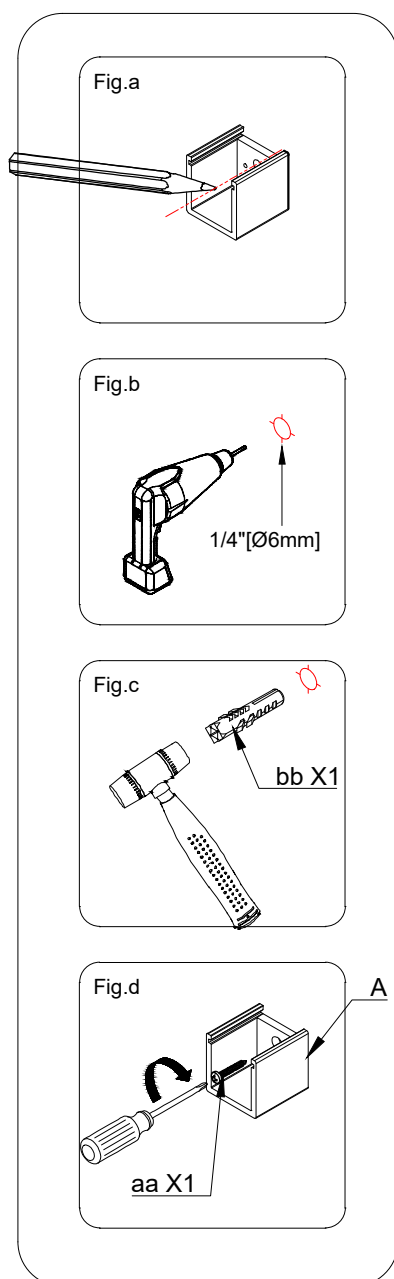
1. Insert the Upper Wall Base(A) into the Upper Guide Rail(O) as Fig.a .
2. the Upper Guide Rail(O) Put in Upper Wall Base(A) as Fig.b .
3. Install the Upper Guide Rail(O) on the Stationary glass(E) and keep it level as Fig.c.
4. Make sure that the Upper Guide Rail(O) is parallel and mark the position of the Upper Wall Base(A) with a pencil as Fig.d .



# 11 Install Upper wall base(A)

## NOTE

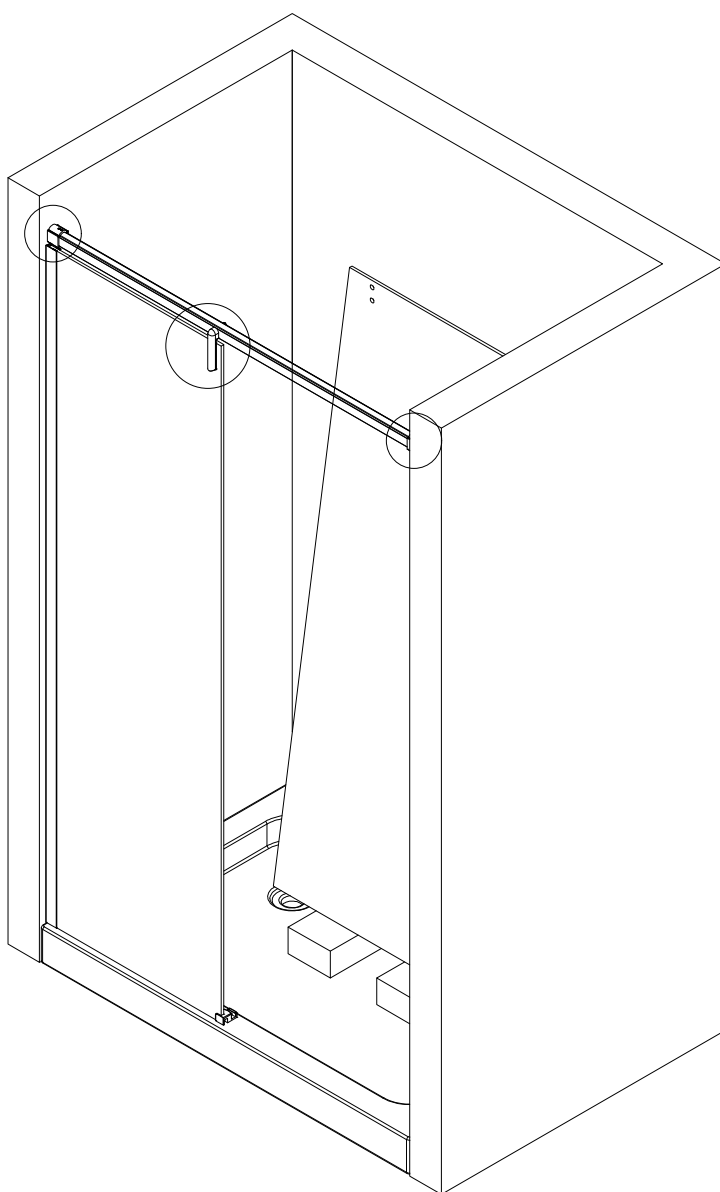
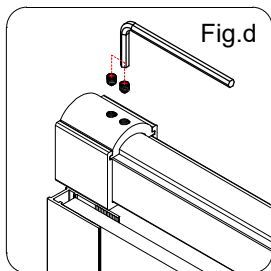
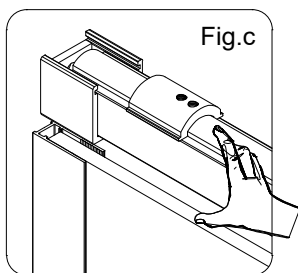
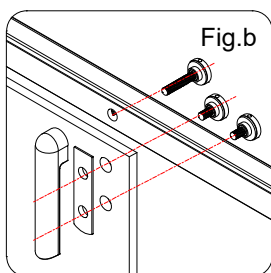
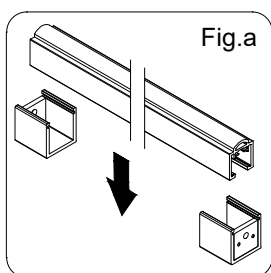
1. Remove the Upper Guide Rail(O), place the Upper Wall Base(A) in the marked position, and mark the hole of the Upper Wall Base(A) as Fig.a .
2. Drill holes with  $\phi 6\text{mm}$  (1/4") drill bit as Fig.b .
3. Insert Wall Anchors(bb) as Fig.c .
4. Secure the Upper wall base(A) with Screws (aa) as Fig.d .



# 12 Install Upper Guide Rail(O)

## NOTE

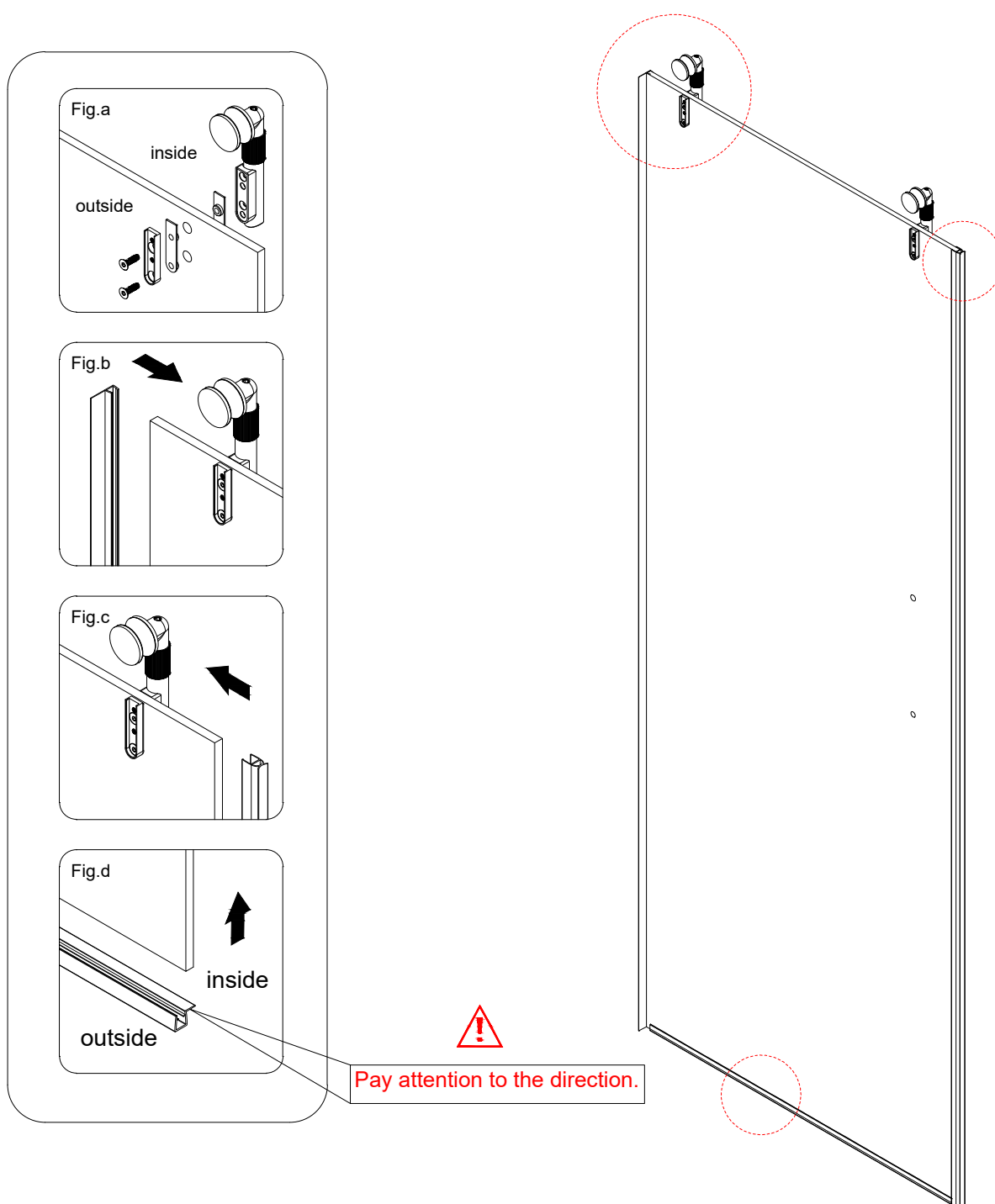
- 1.the Upper Guide Rail(O) Put in Upper Wall Base(A) as Fig.a .
- 2.Secure the Upper Guide Rail(O) to the Stationary Glass(E) with the Stationary glass fastener(D) as Fig.b .
- 3.Push the Upper Wall Base(A) onto the bottom cap as Fig.c .
- 4.Secure the Upper Wall Base(A) with a hex wrench as Fig.d .



# 13 Install Roller(G) and Install the Anti-Water Strip(H/I/L)

## NOTE

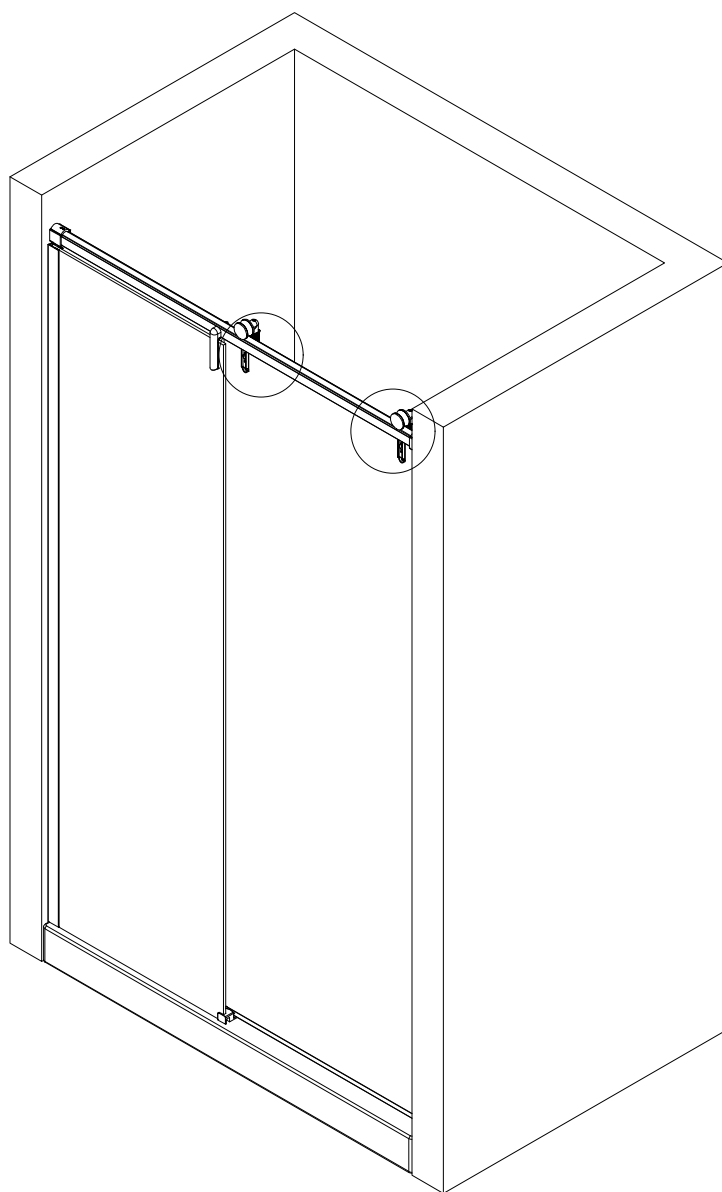
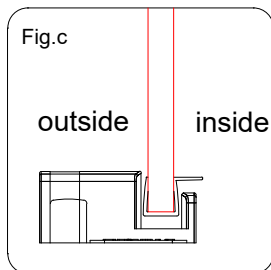
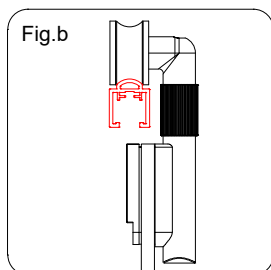
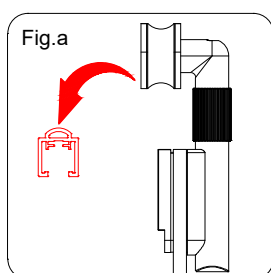
- 1.Connect the Door Panel(F) to two Rollers(G) as Fig.a .
- 2.Install it the Anti-Water Strip(H) to the Door Panel(F) as Fig.b
- 3.Install it the Anti-Water Strip(I) to the Door Panel(F) as Fig.c .
- 4.Install it the Anti-Water Strip(L) to the Door Panel(F) as Fig.d .



# 14 Install the Door Panel(F)

**NOTE**

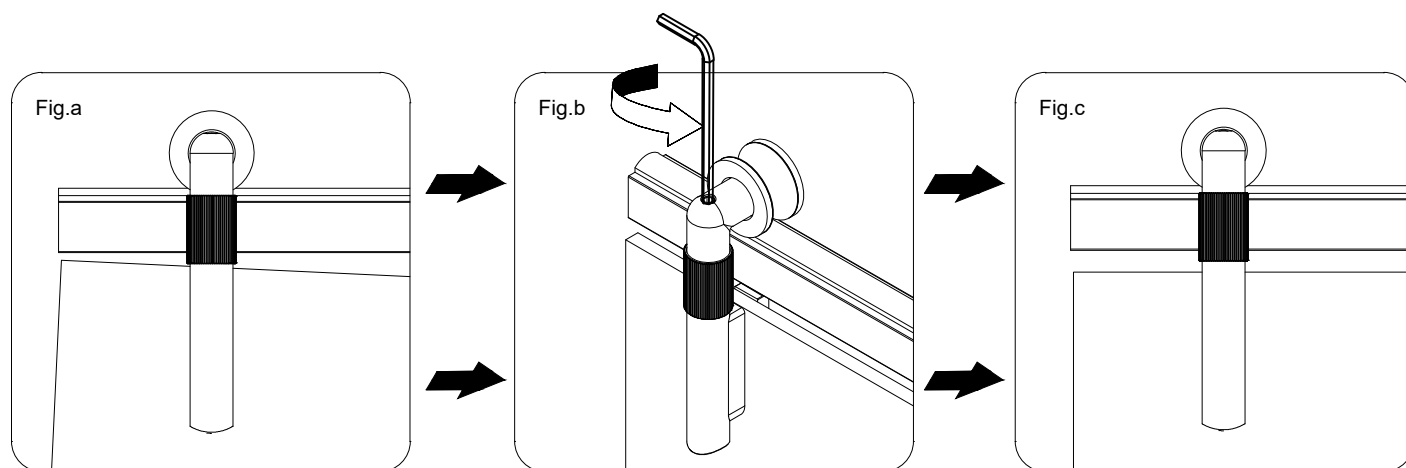
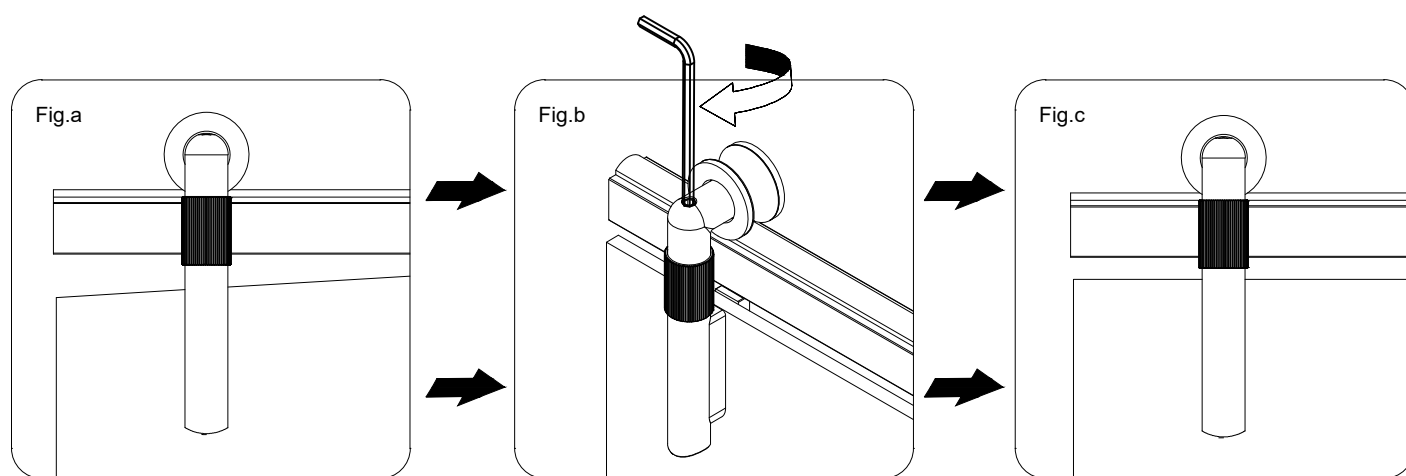
1. Hang the Rollers(G) on the Upper Guide Rail(O) as Fig.a and as Fig.b
2. Then insert the bottom of Door Panel(F) into the Guide Block(K) as Fig.c .



# 15 Adjustment

NOTE

1.Adjust this screw to make the Door Panel(F) level as Fig



After the installation of the live glass, the glass is not flush with the wall



Adjust the height of one side of the glass through the pulley

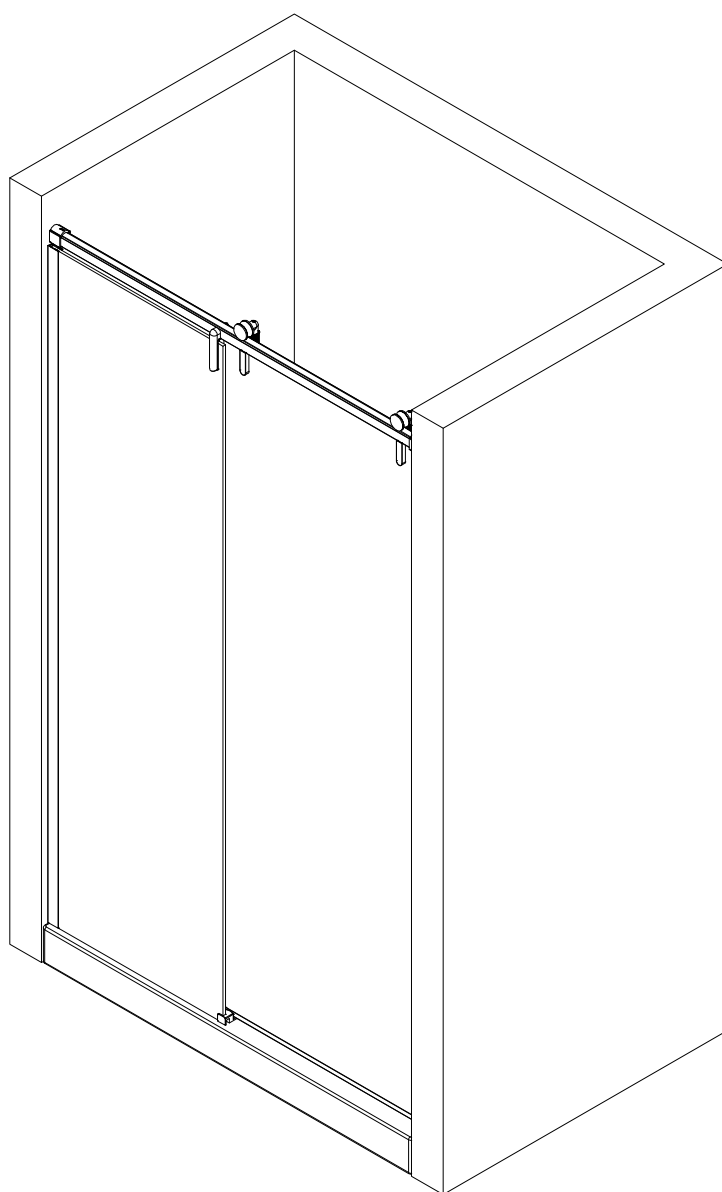
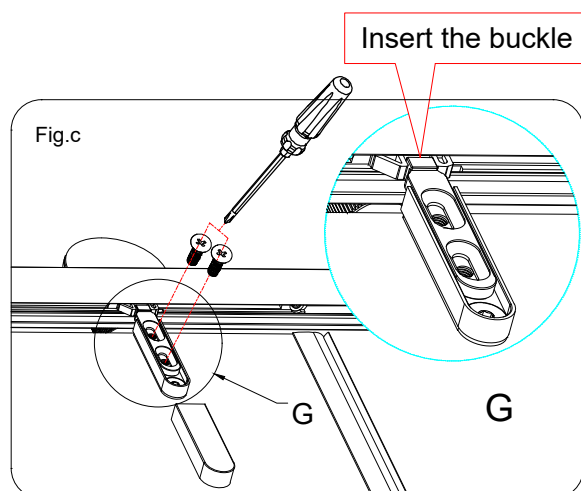
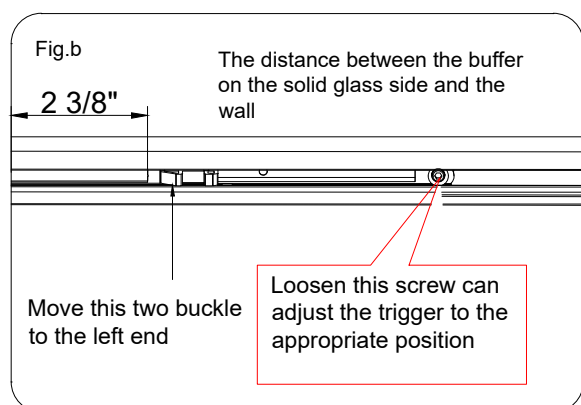
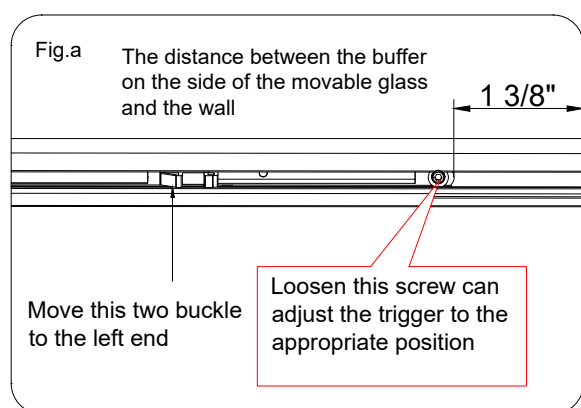


Make the glass completely flush with the wall

# 16 the Install the Rollers(G) buffer hook

## NOTE

1. Adjust the position of the buffer as Fig.a and as Fig.b.
2. Align the Rollers(G) buffer hook with the buffer hook for secure the with screws as Fig.c.



## 17 Install the Water-blocking aluminum materia(M) and End block(N)

### NOTE

- 1.Put it on the tray and adjust it, if the size is not suitable, as Fig.a. If the size is suitable ,skip to the step as Fig.a.
- 2.Tear off the 3M adhesive film at the bottom of the water-blocking aluminum material as Fig.b .
- 3.Install the water-blocking aluminum material(M) inside the Guide Block(K) as Fig.c
- 4.Install end End block(N) on the water-blocking aluminum material(M) as Fig.d

Fig.a

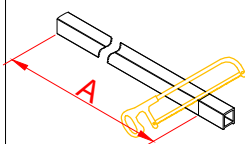


Fig.b

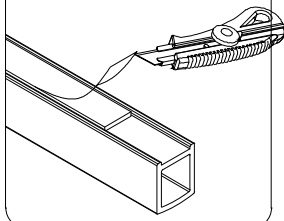


Fig.c

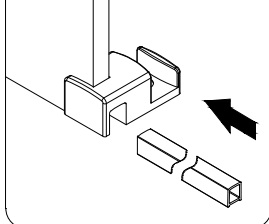
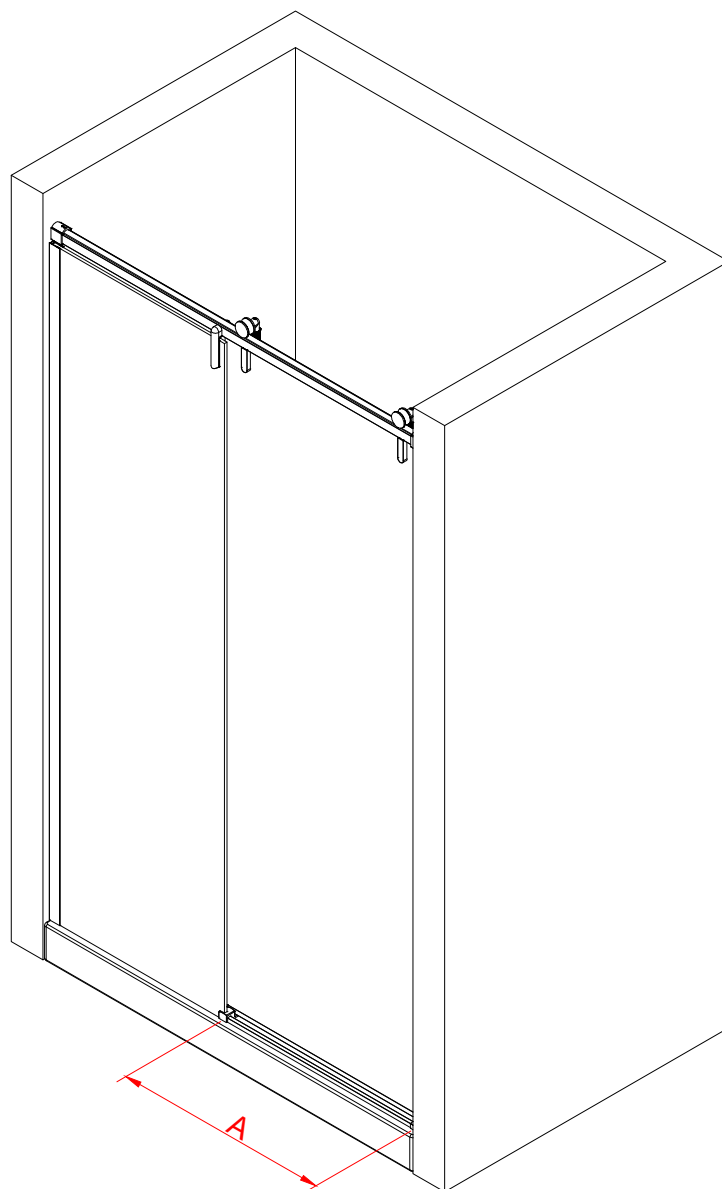
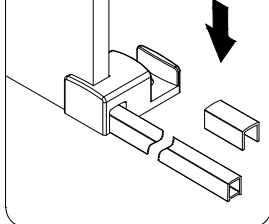


Fig.b

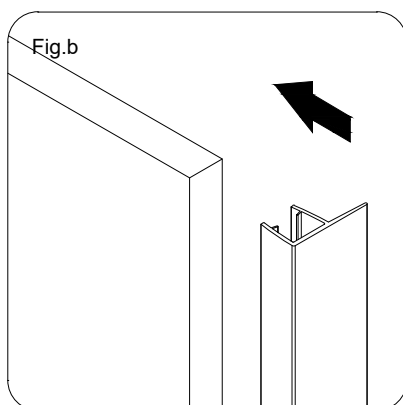
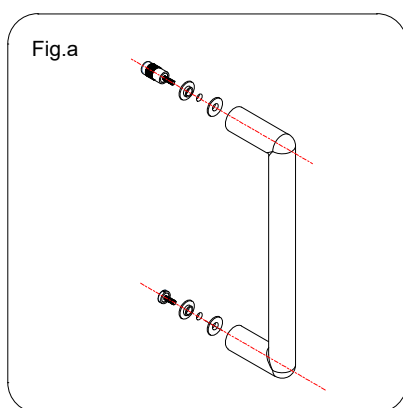




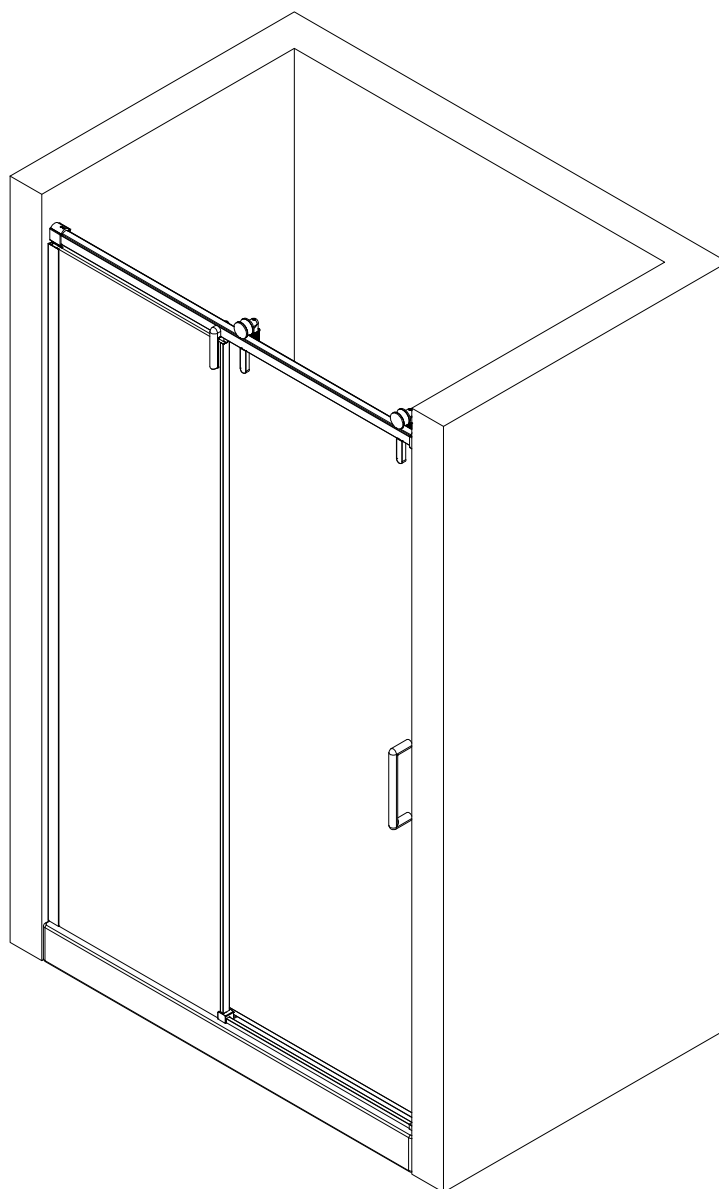
# 18

 Install Handle(J) and Install the Anti-Water Strip(H)**NOTE**

- 1.Install Handle(J) as Fig.a .
- 2.Install the Anti-Water Strip (H) on the Front Panel (E) as Fig.b .



Install it the Anti-Water Strip(H)  
to theFront Panel(E)



# 19 SEALING

NOTE

The surfaces need to be clean and free of debris before applying silicone.

NOTE

Make sure that the Shower door closes tightly and opens smoothly.  
Apply a high-quality silicone sealant along the Wall Jamb and Aluminum



Allow 24 hours for the silicone to cure before using the shower.

24



Apply Silicone Sealant,(not supplied).

