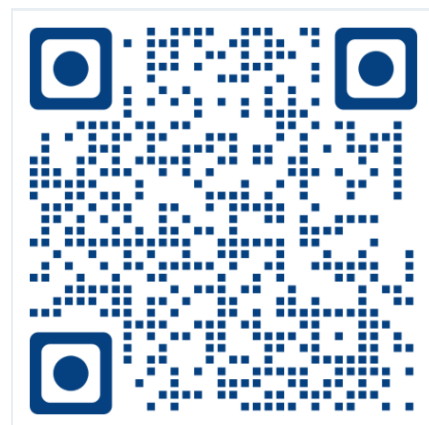
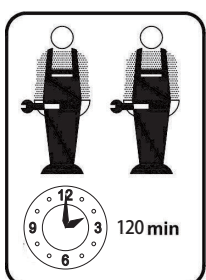
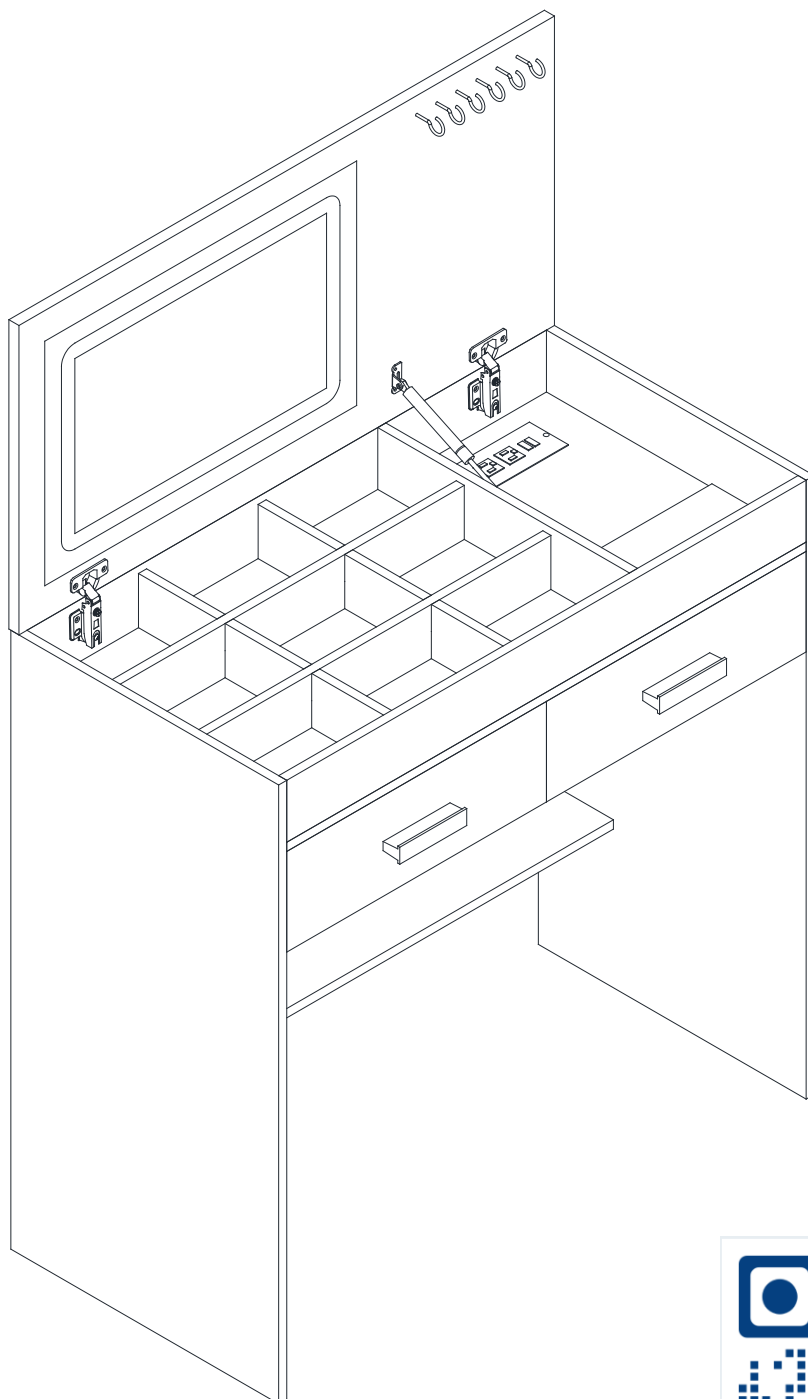


ASSEMBLY INSTRUCTION



[Install Video](#)

! SAFETY WARNINGS !

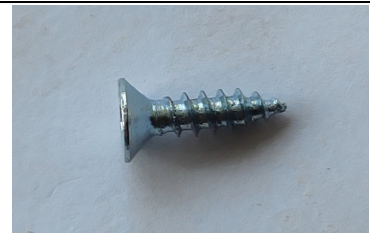
1. Please read the instructions fully before assembly. These instructions include important information which could ensure correct assembly. We have been working on providing high quality products for you. However, in the rare instance that your product is defective, missing parts or there are some issues, please don't hesitate to contact our customer service to submit parts requirements, assembly suggestion, or warranty claims, and we will give the best solution as soon as possible. If necessary, we need you to provide some more clear pictures of the issue.
2. Insert the screws in holes and tighten the screws, but not too tight, 70% is ok, finally tighten all the screws. If some issues happened that some screws can not target to the hole or some parts are difficult to install, please adjust the tightness of the screws.
3. 2 people are recommended to finish.



Ax51



Bx51



Cx20



Dx3



Ex4



Fx1



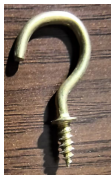
Gx1



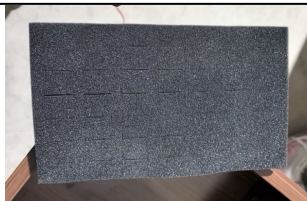
Jx2



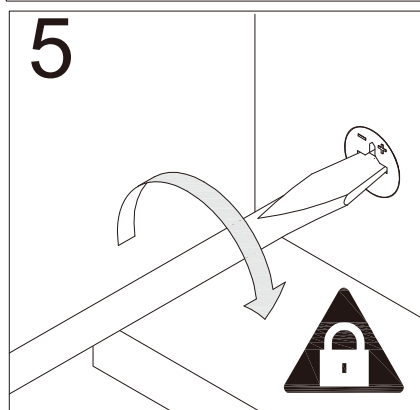
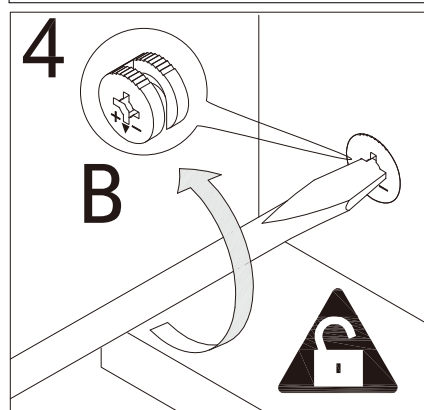
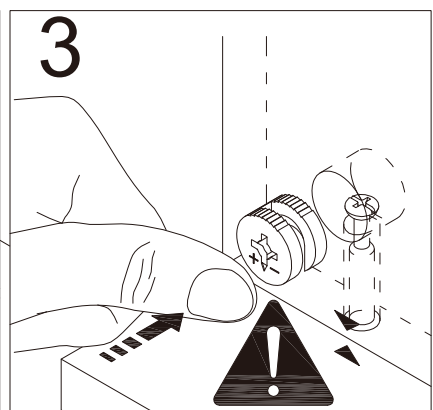
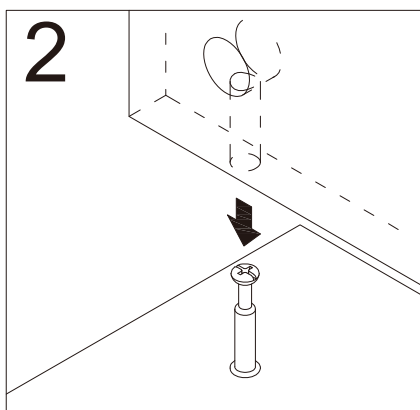
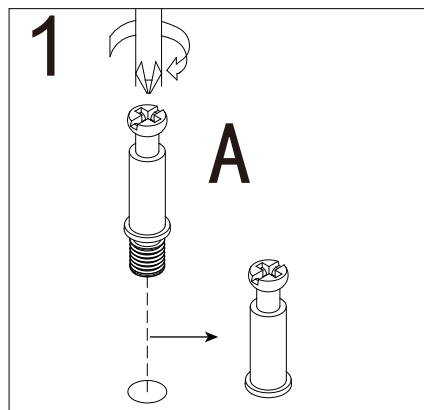
Kx2

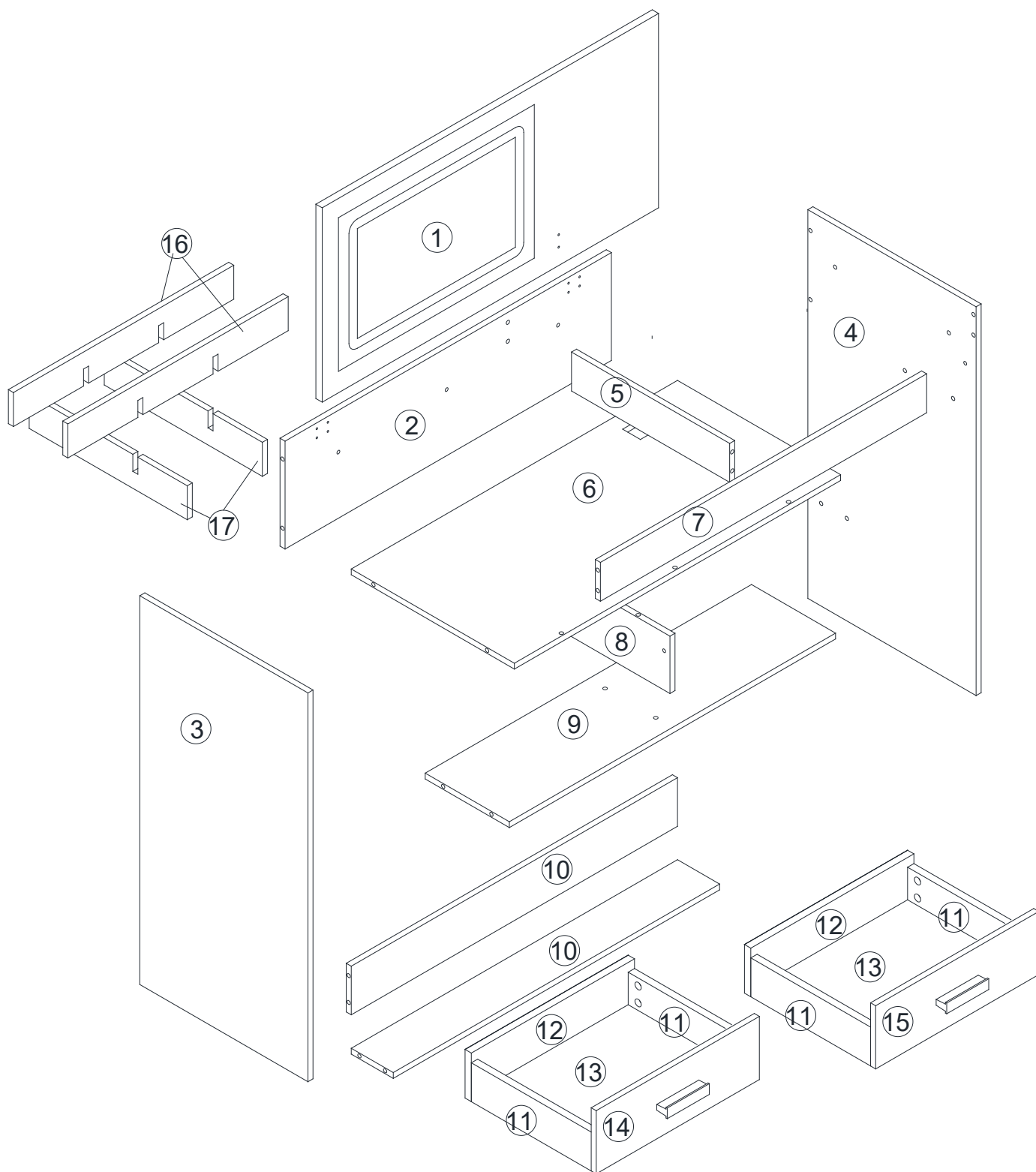


Lx6



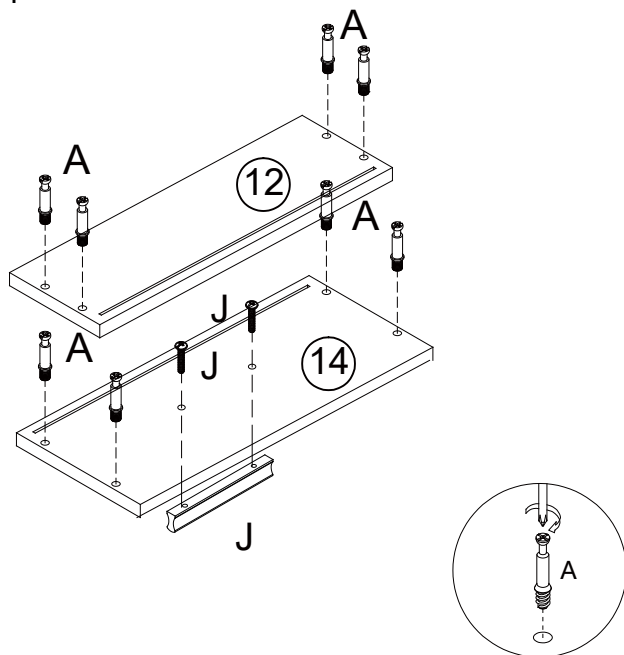
Mx1



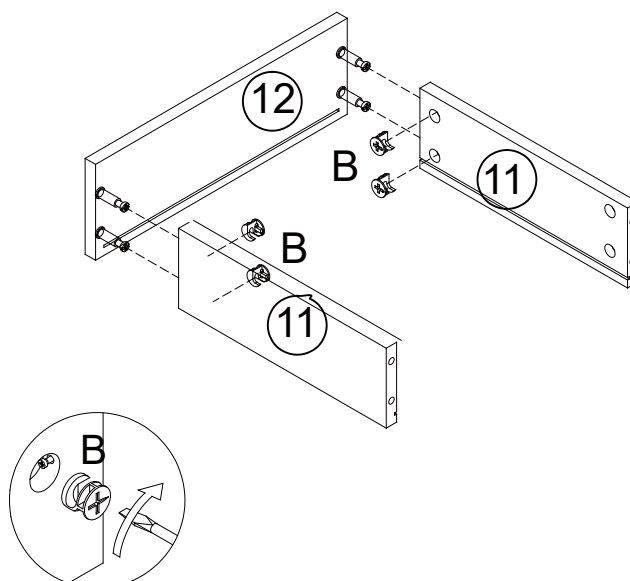


1 - x1	8 - x1	15 - x1
2 - x1	9 - x1	16 - x2
3 - x1	10 - x2	17 - x2
4 - x1	11 - x4	
5 - x1	12 - x2	
6 - x1	13 - x2	
7 - x1	14 - x1	

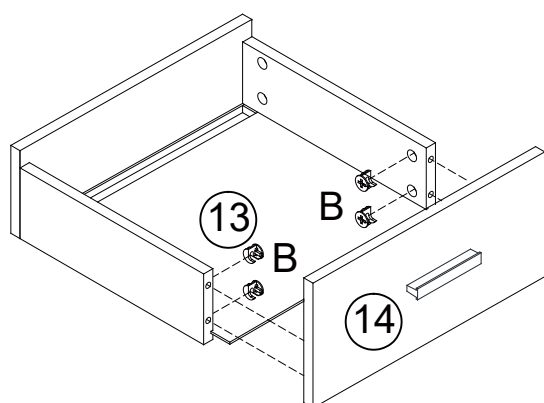
STEP 1



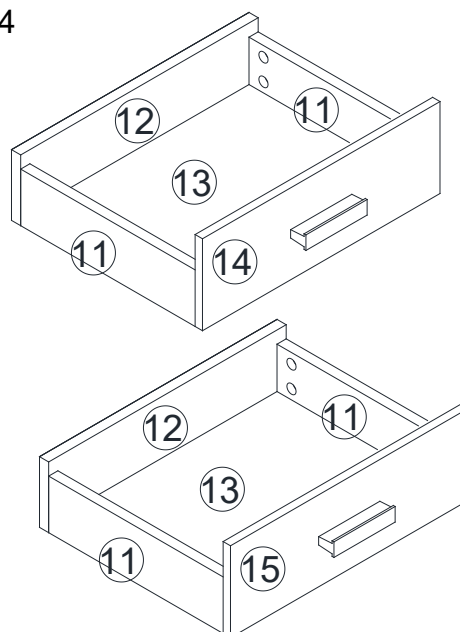
STEP 2



STEP 3

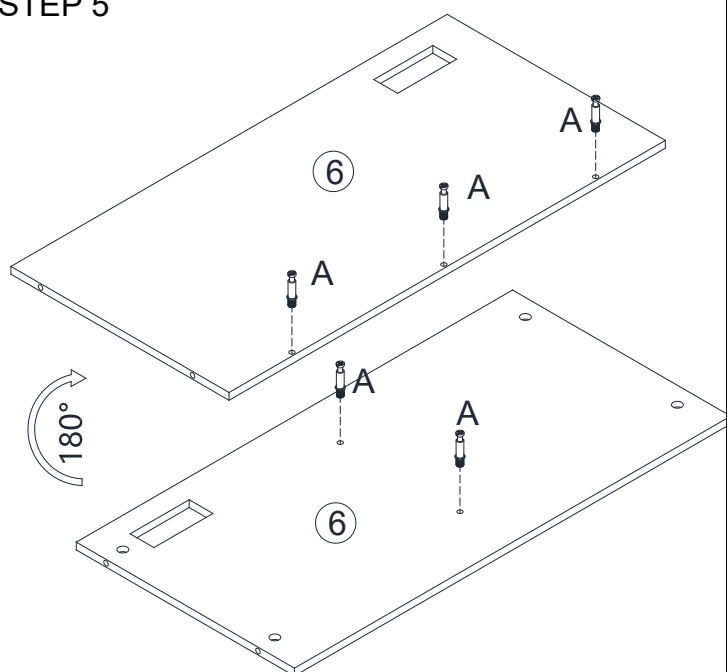


STEP 4

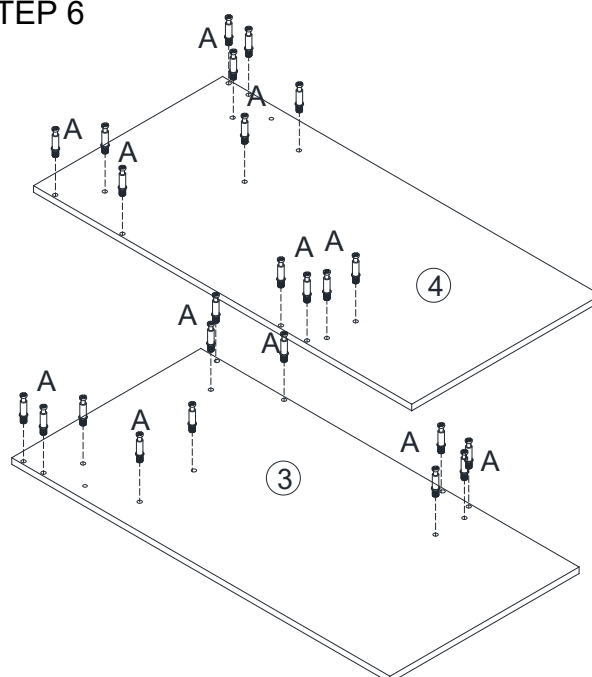


Two drawers are installed the same way

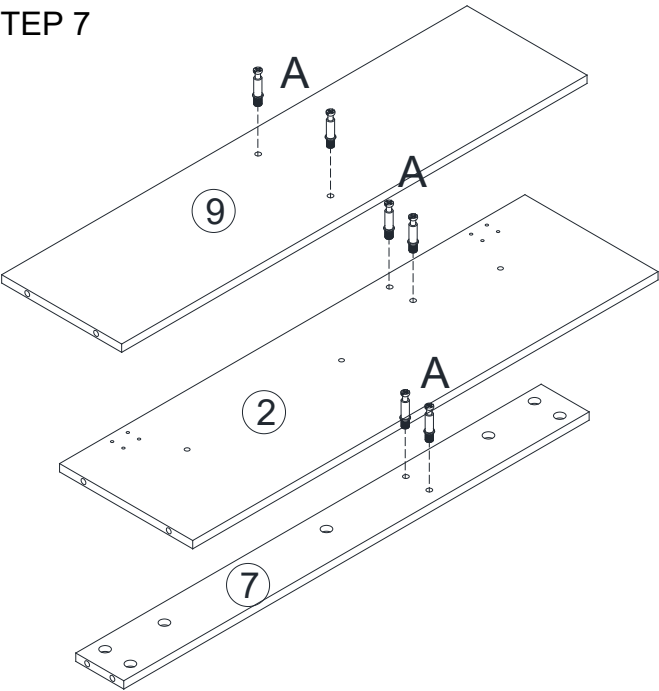
STEP 5



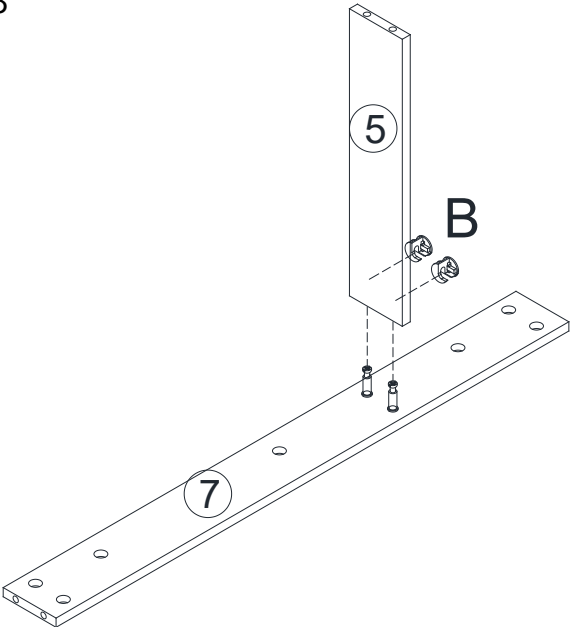
STEP 6



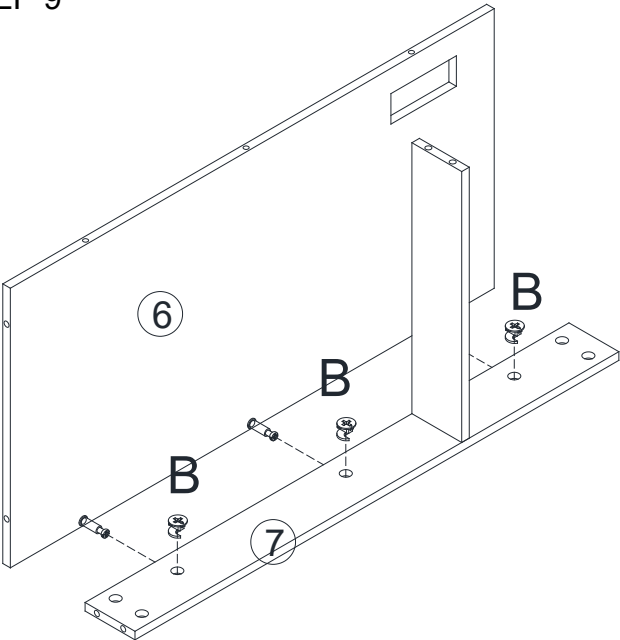
STEP 7



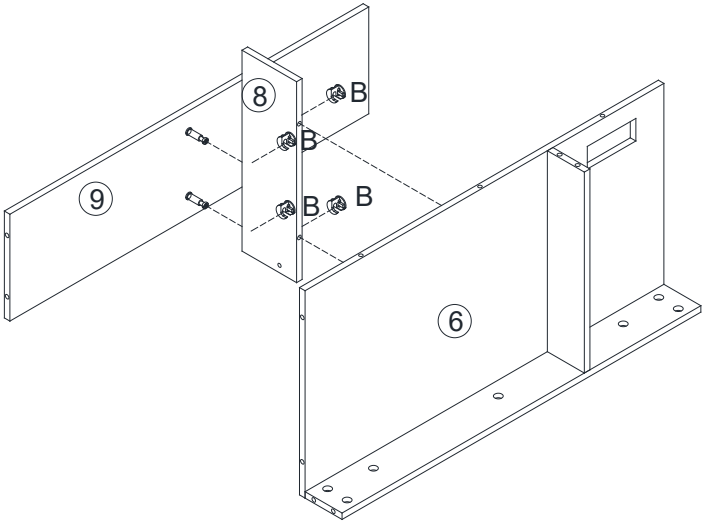
STEP 8



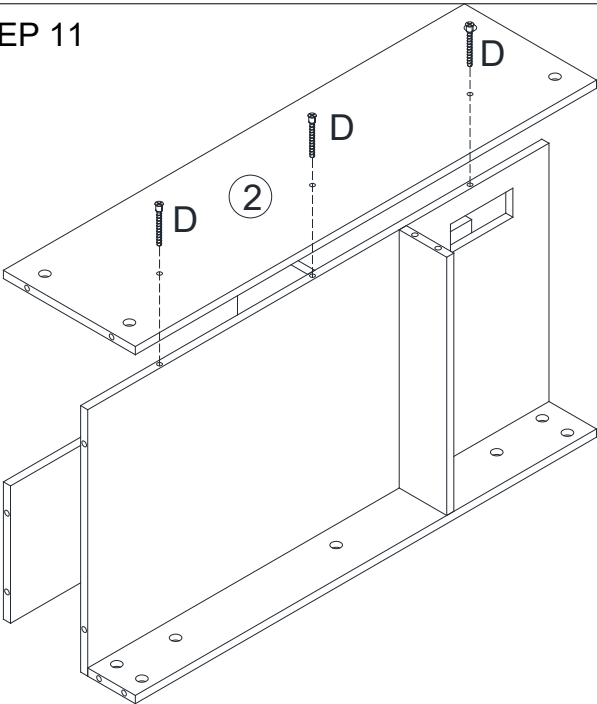
STEP 9



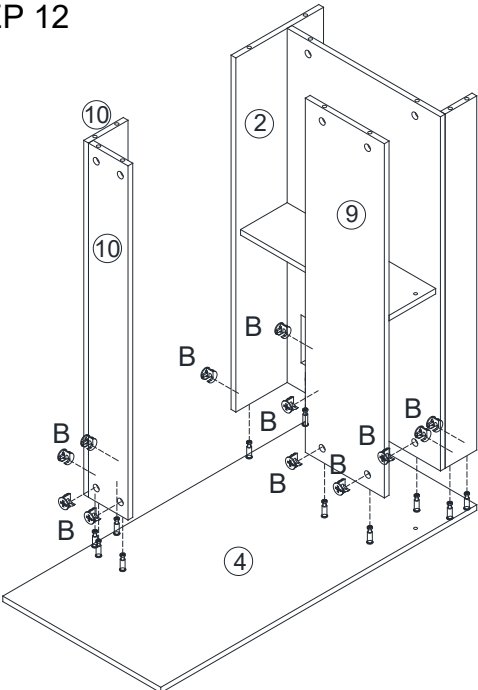
STEP 10



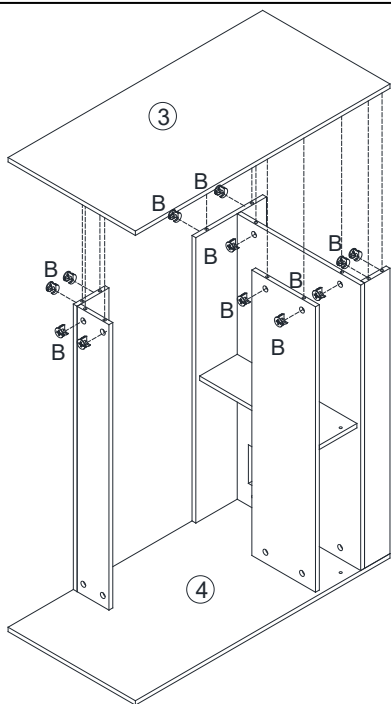
STEP 11



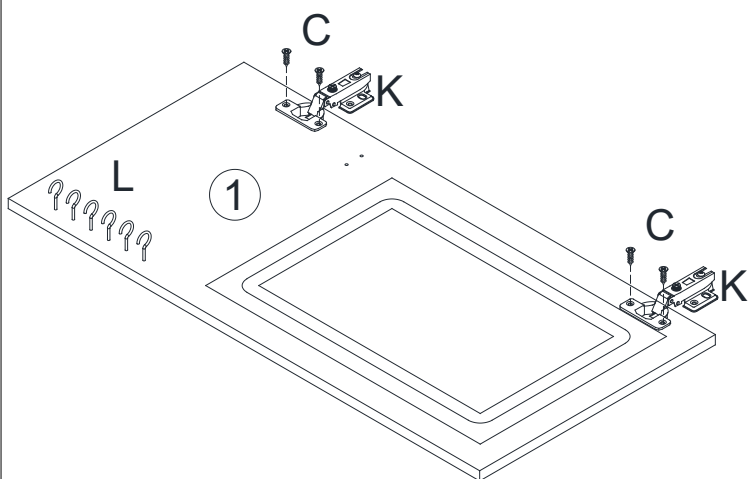
STEP 12



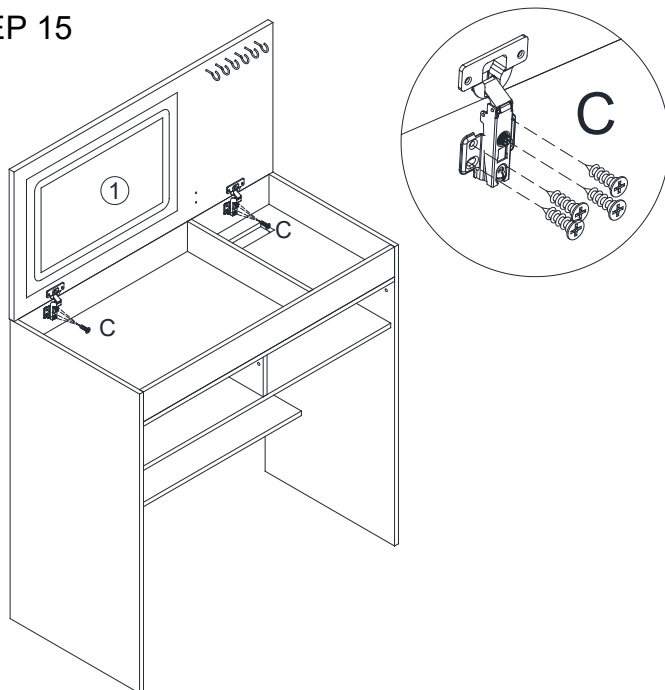
STEP 13



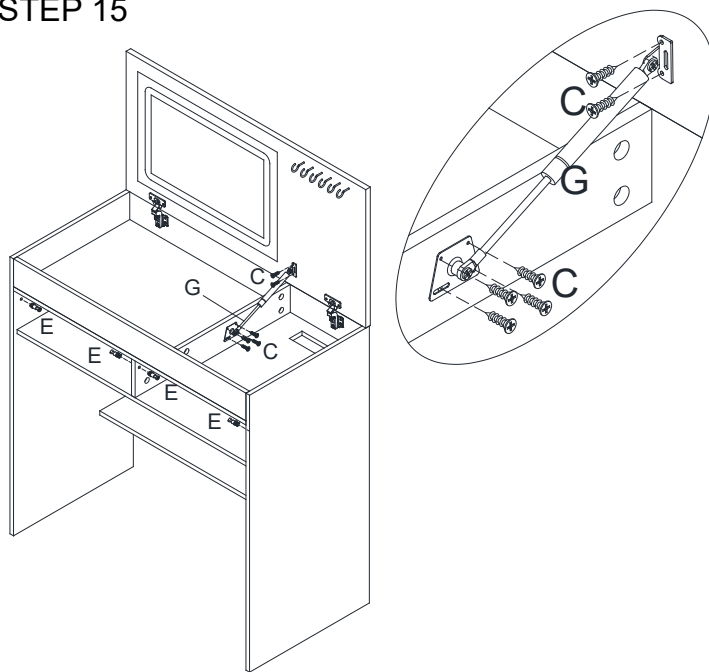
STEP 14



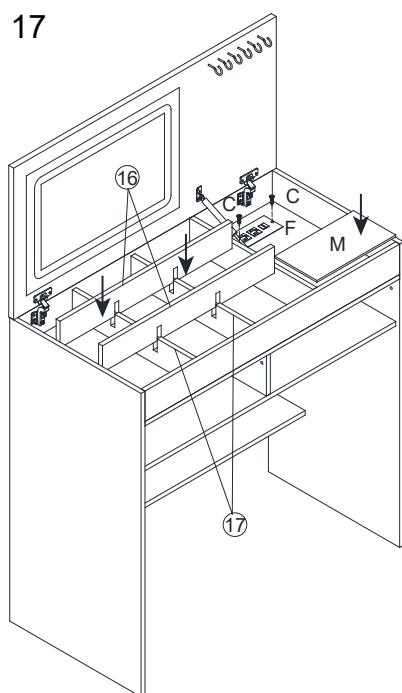
STEP 15



STEP 15



STEP 17



STEP 18

