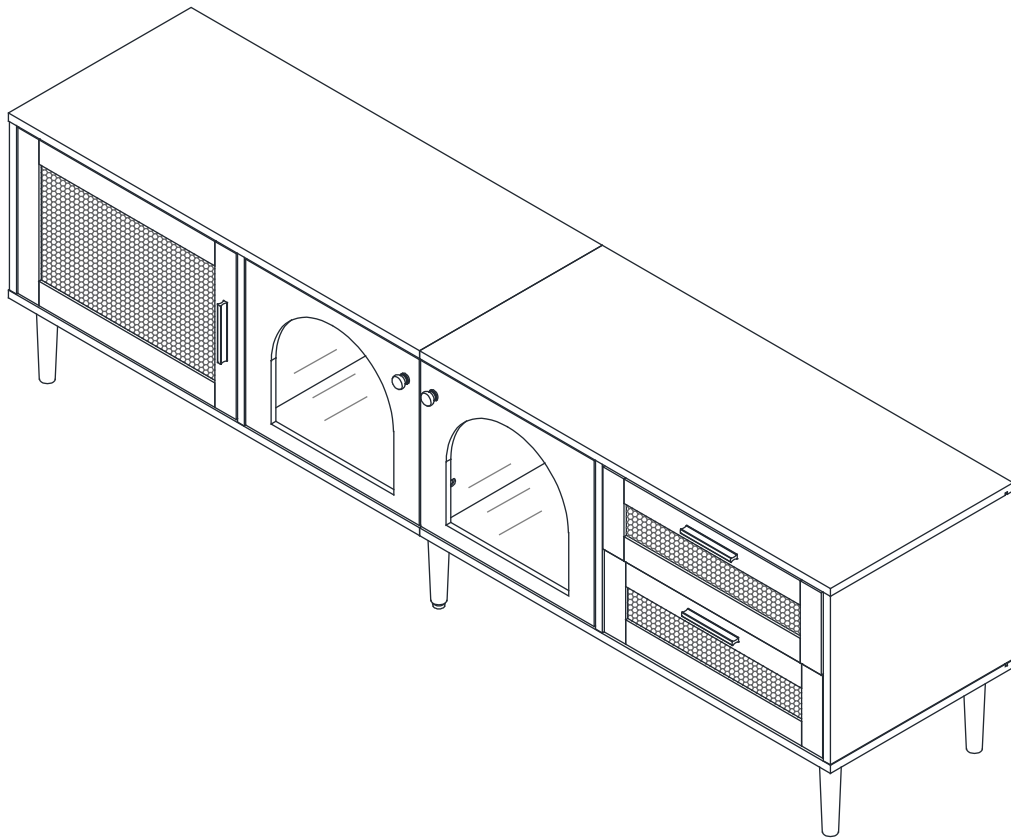


TV STAND

USER MANUAL



SAVE THESE INSTRUCTIONS FOR FUTURE USE

PLEASE DO NOT RETURN TO STORE



**Please do not return this product to the retailer!!
We are able to assist you in ANY way**

If you find that you have any trouble with assembly or missing or damaged parts please contact the seller.

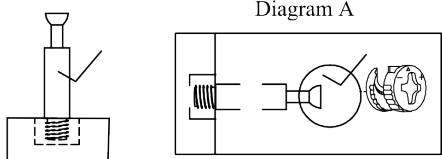
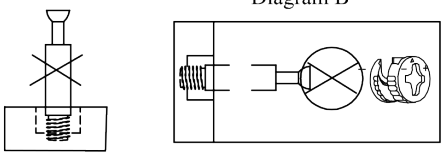
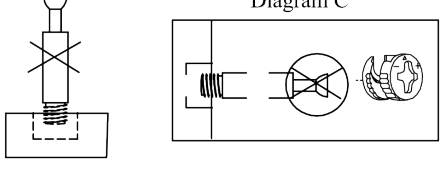
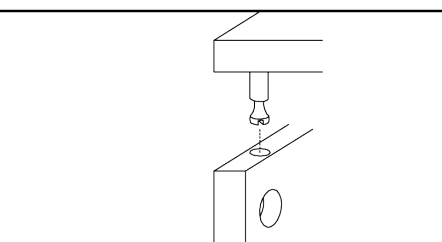
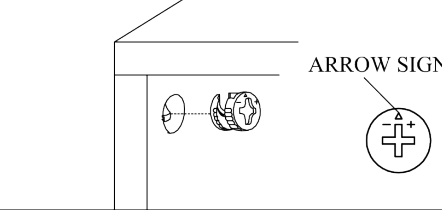
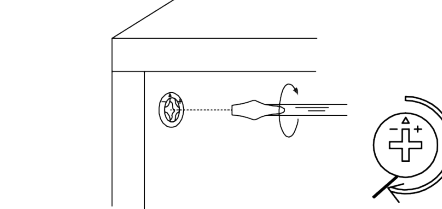
Before Installation

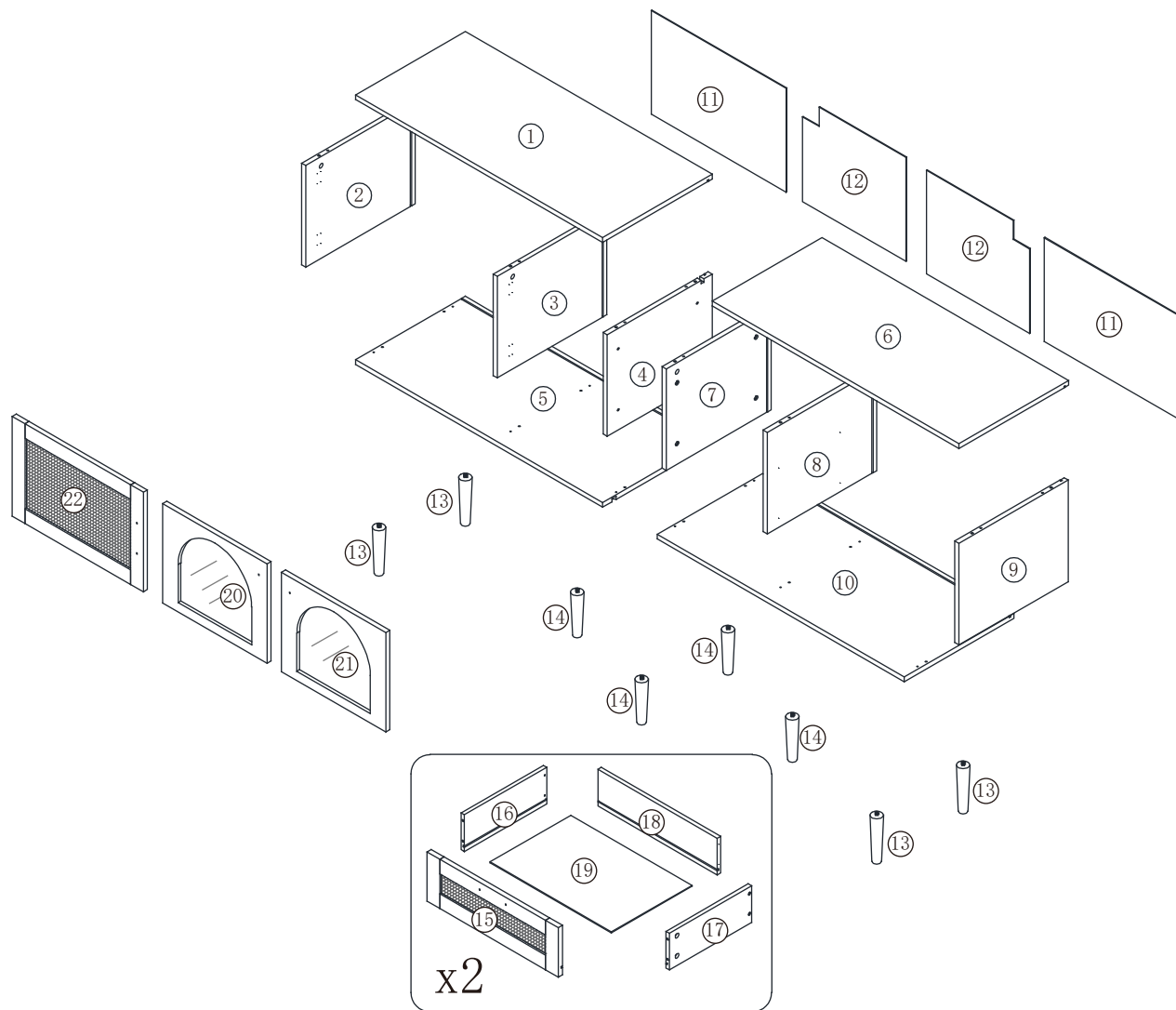
Important – Please read these instructions fully before starting assembly

Thank you for purchasing this quality product. Be sure to check all packing materials carefully for small parts, which may have come loose inside the carton during shipment. Identify and count all items according to the PARTS LIST and/or HARDWARE LIST shown below. Check you have all the components and tools listed on the following pages.

- We recommend that you assemble this product with the assistance of another person; this will make the assembly easier, and will help eliminate damage to the product or injury to persons during assembly.
- Please do not over tighten screws or bolts until the assembly is completed.
- Keep children and animal away from the work area, small parts could choke if swallowed.
- Please put all parts on a non-abrasive floor before assembly, and follow the assembly steps to assemble your newly purchased product correctly and efficiently.

Cam Lock Assembly Instructions

	<p>Diagram A</p> <p>Insert Cam Bolt into hole as shown in diagram A.</p>
	<p>Diagram B</p> <p>Make sure not to insert the Cam Bolt: Too deep as shown in figure B as this will cause the Cam Lock to be misaligned and unable to interlock properly.</p>
	<p>Diagram C</p> <p>Also avoid inserting the Cam Bolt too close to the surface of the hole as shown in figure C, as this will cause the Cam Lock to be too loose, and not interlock properly.</p>
	<p>Connect the panels together.</p>
	<p>ARROW SIGN</p> <p>Insert the Cam Lock so the side opening fits over the head of the Cam Bolt.</p>
	<p>To tighten the Cam Lock, turn it clockwise on half a turn with a flat screwdriver. <i>*Do not use an automatic screwdriver as it may bend or break if too much power is imposed.</i></p>



Ax20 	Bx20 	Cx24 M6x30 	Dx12 M4x40 	Ex 8 M4x30 	Fx16 M3x12
Gx18 M3x14 	Hx36 M4x14 	Ix32 M4x12 	Jx8 	Kx 4 M6x18 	Lx1
Mx6 	Nx2 M4x25 	Ox6 M4x18 	Px3 	Qx2 	Rx4
Sx4 	Tx20 	Ux16 	Vx2 	Xx2 	Zx2 M4x35
Yx1 	CRx2 300mm 	CLx2 300mm 	DRx2 300mm 	DLx2 300mm 	

STEP 1

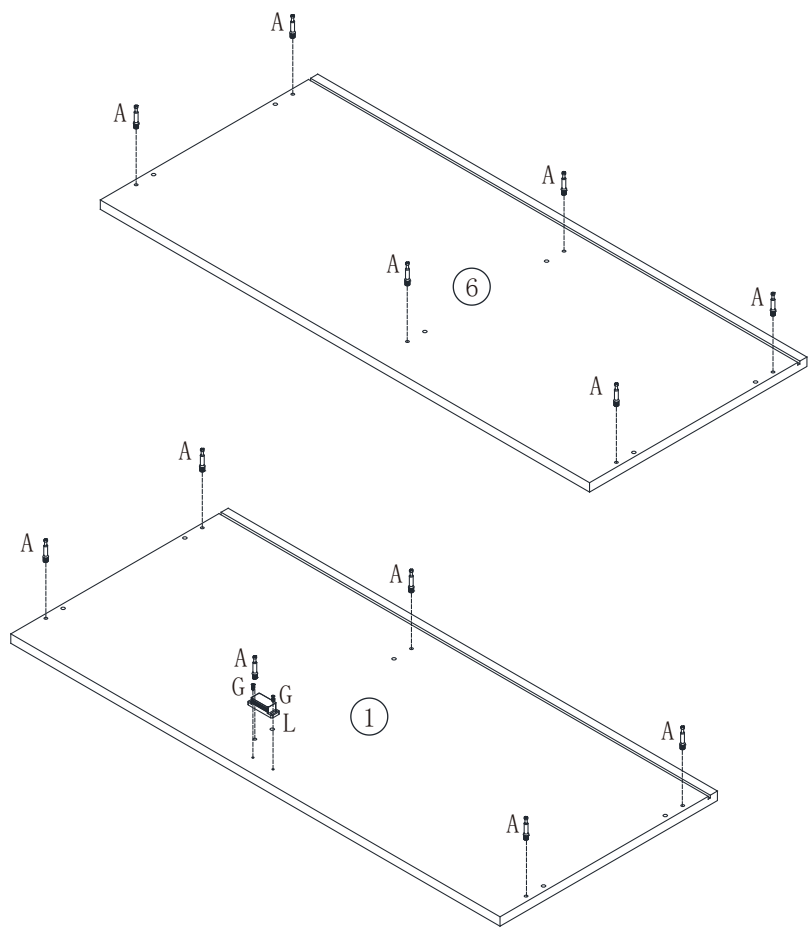
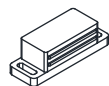
Ax12



Gx2



Lx1



STEP 2

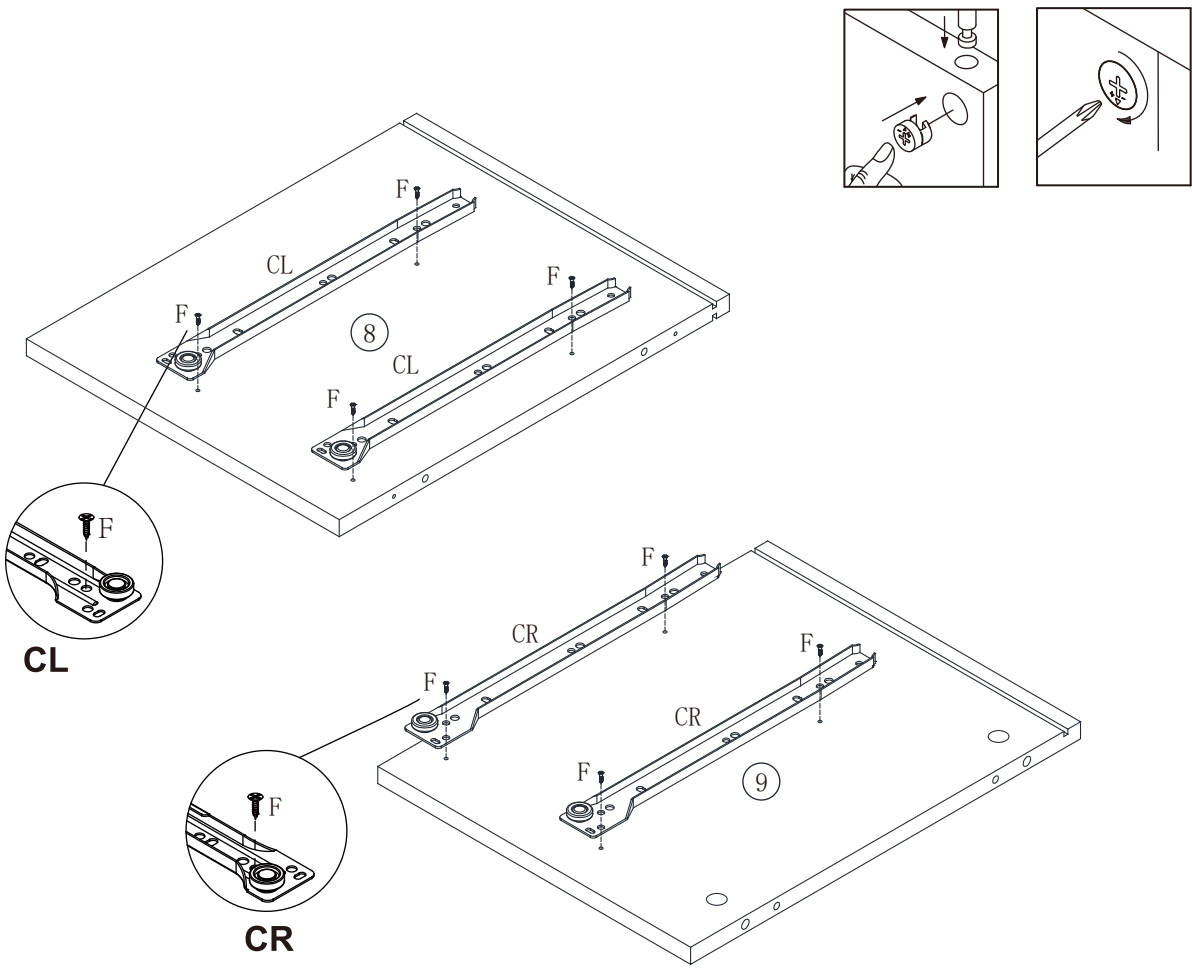
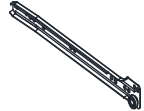
Fx8



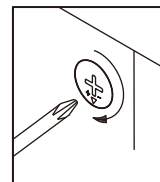
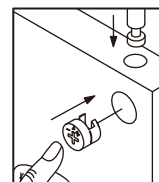
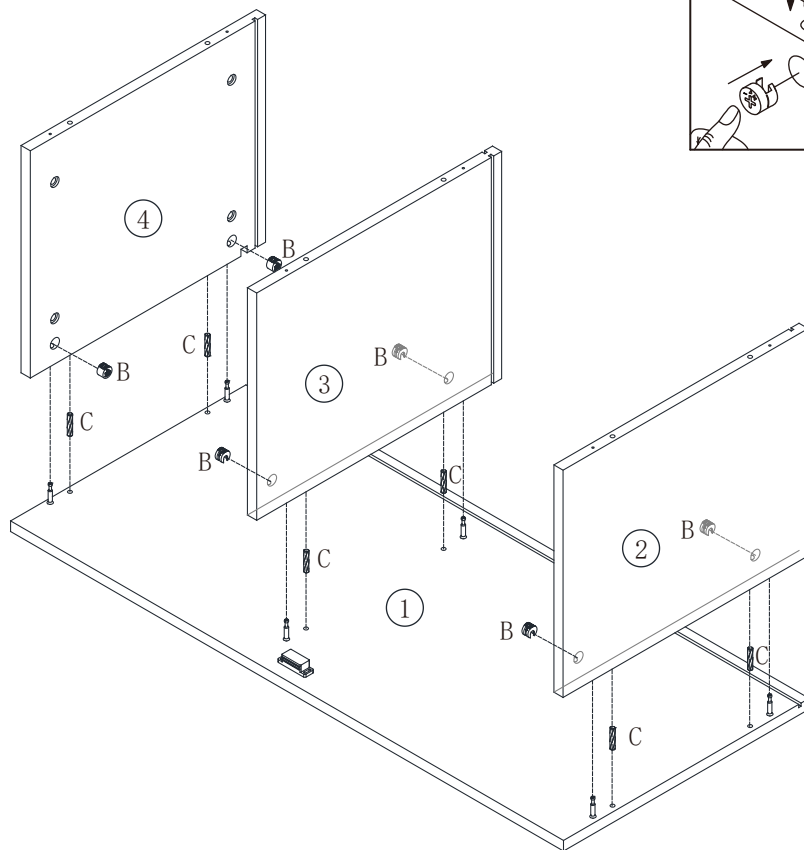
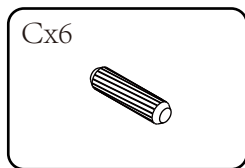
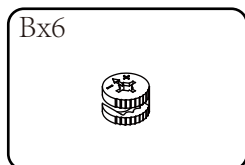
CLx2



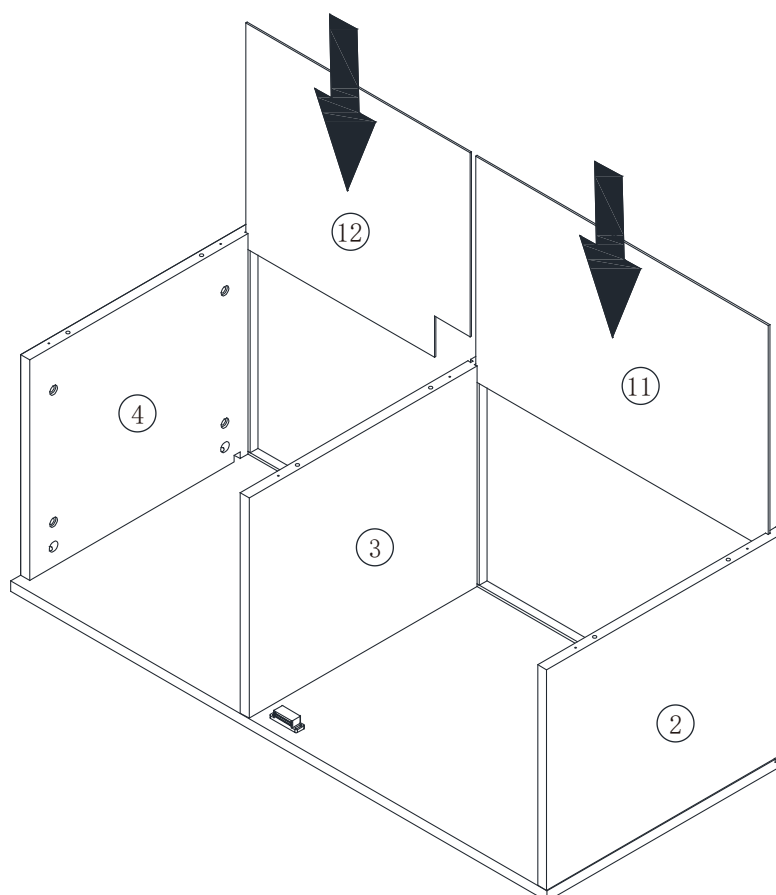
CRx2



STEP 3



STEP 4

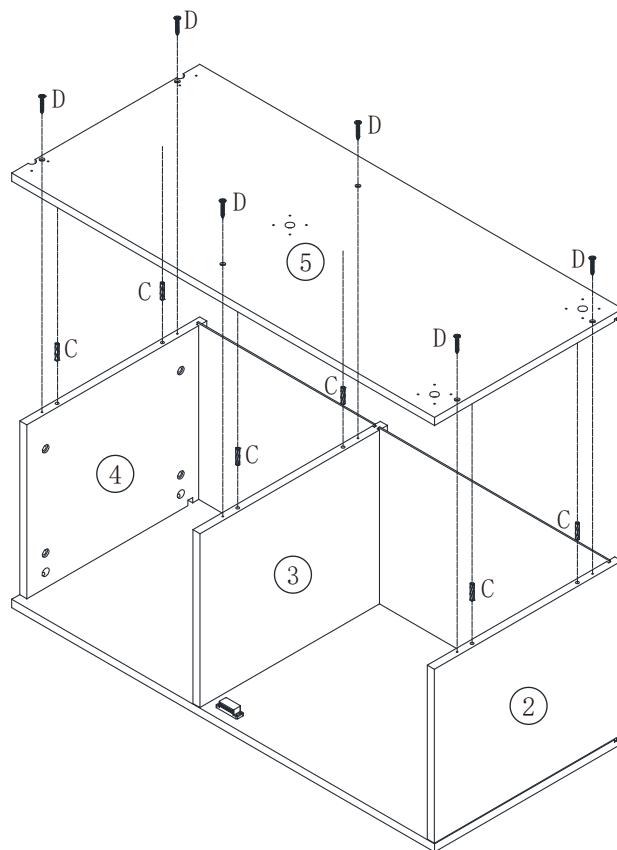


STEP 5

Dx6



Cx6

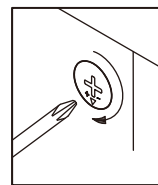
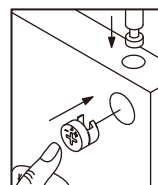
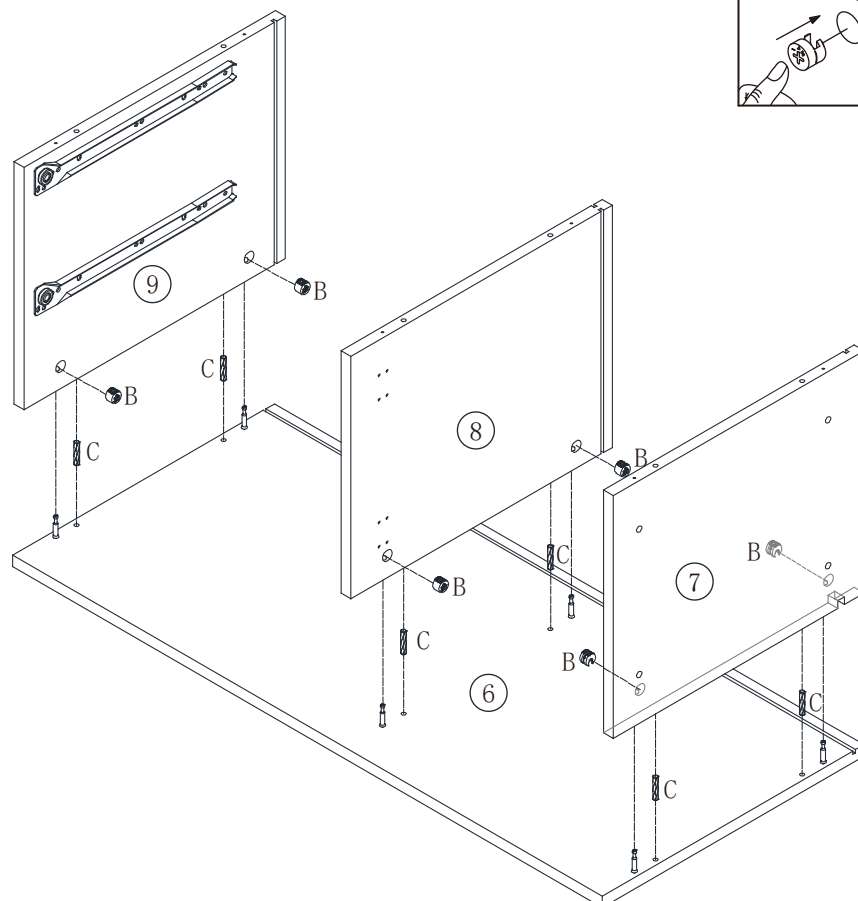


STEP 6

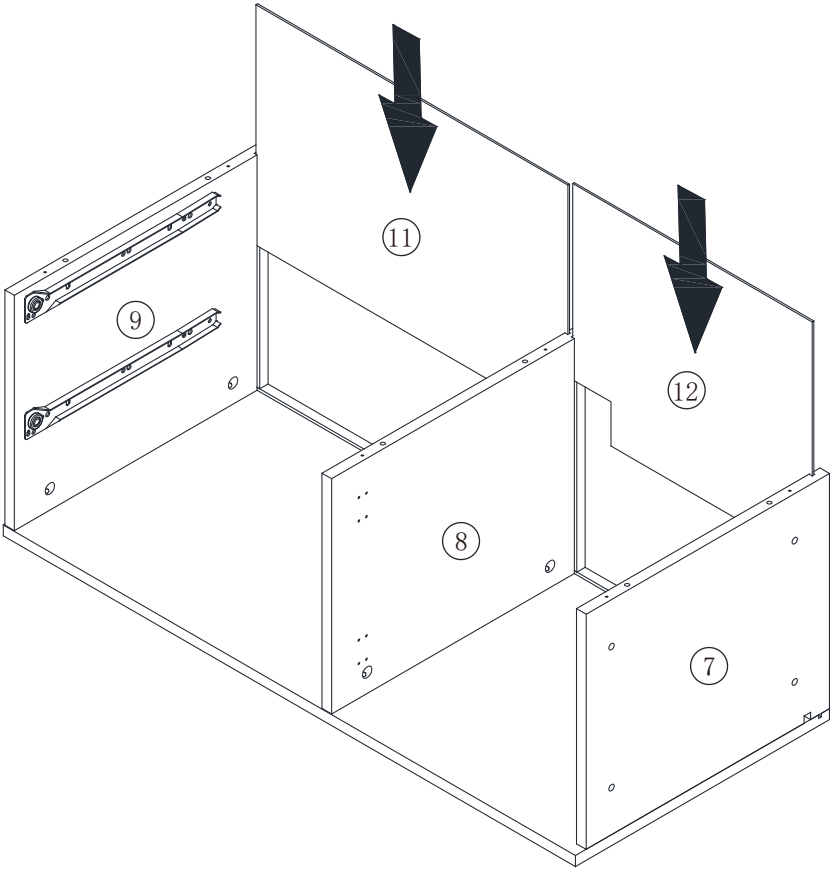
Bx6



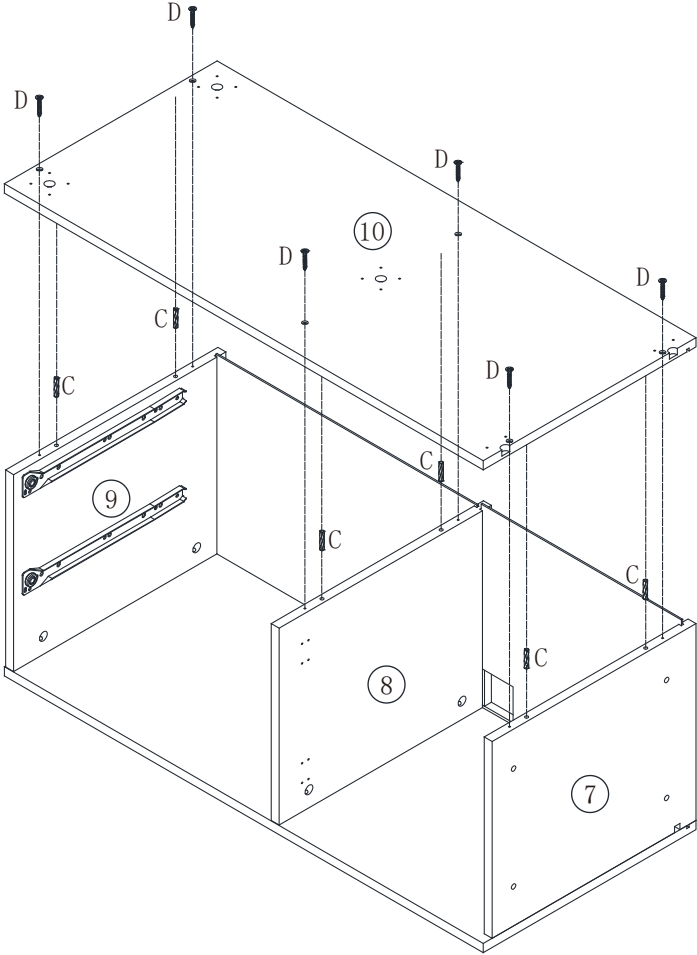
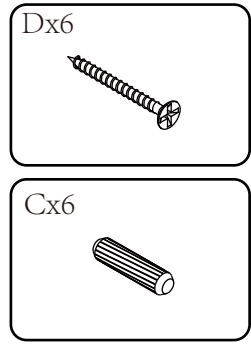
Cx6



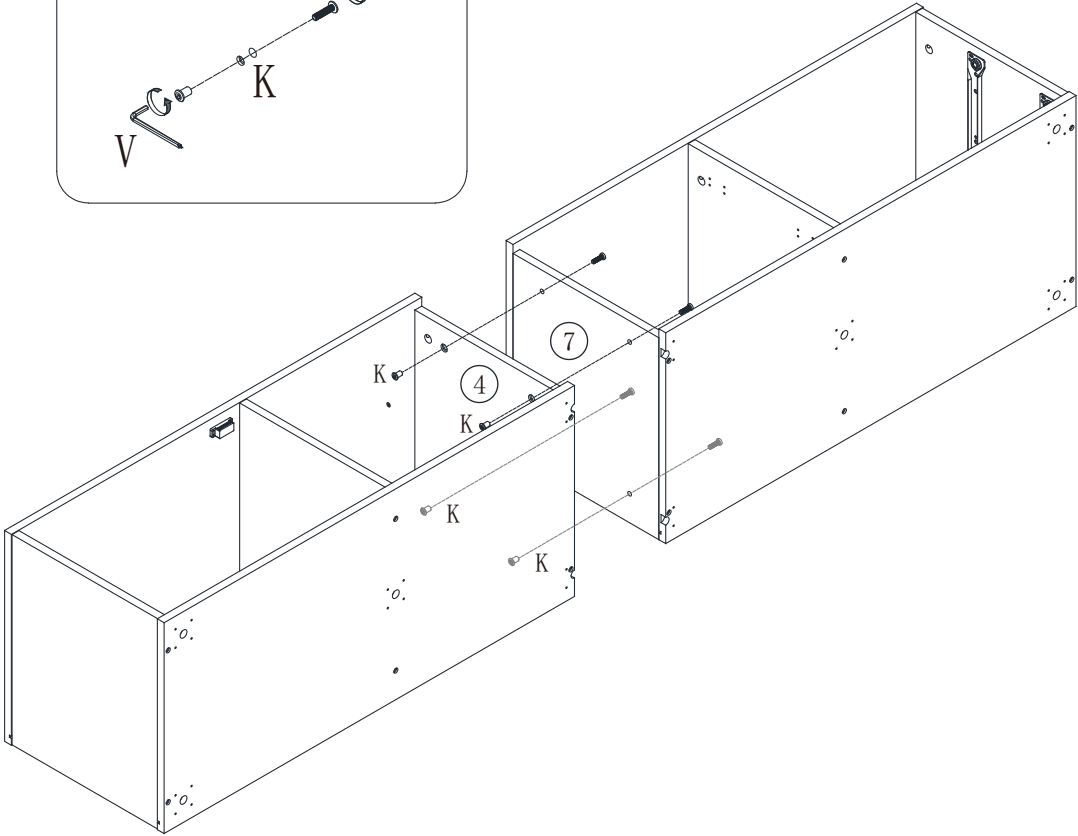
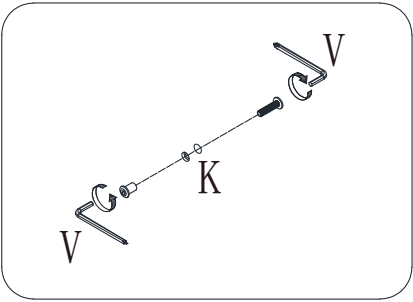
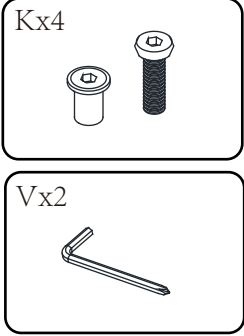
STEP 7



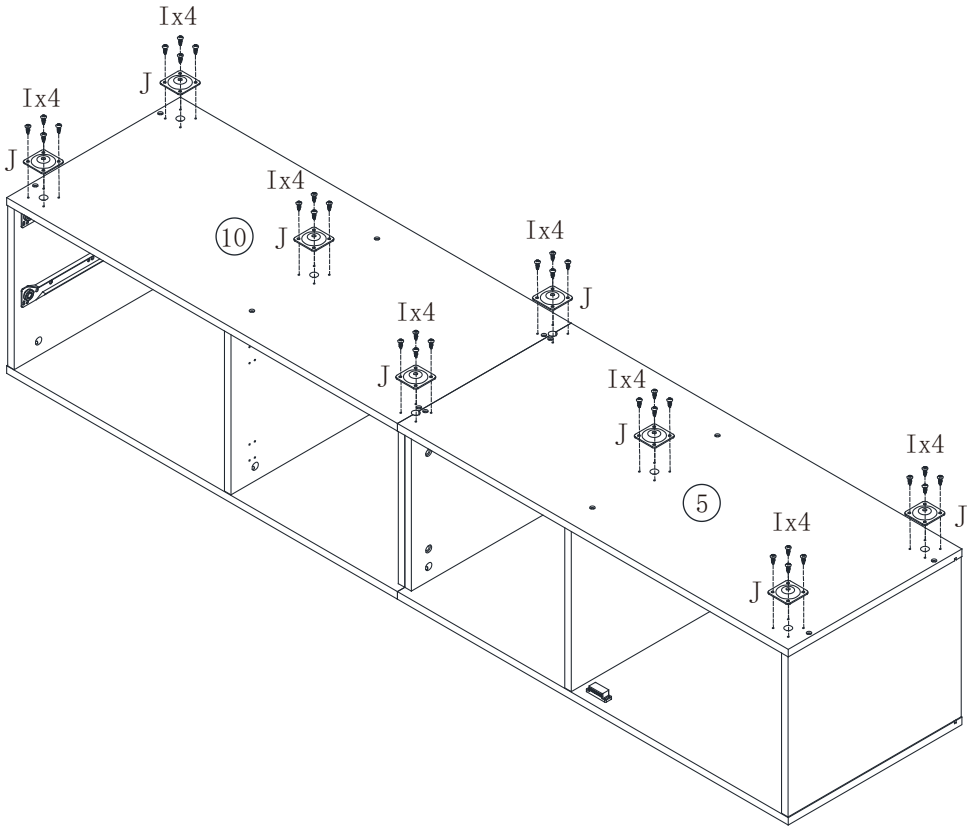
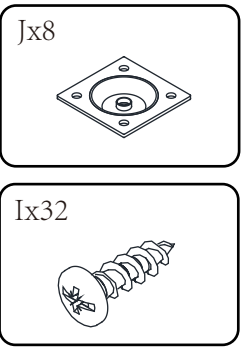
STEP 8



STEP 9



STEP 10

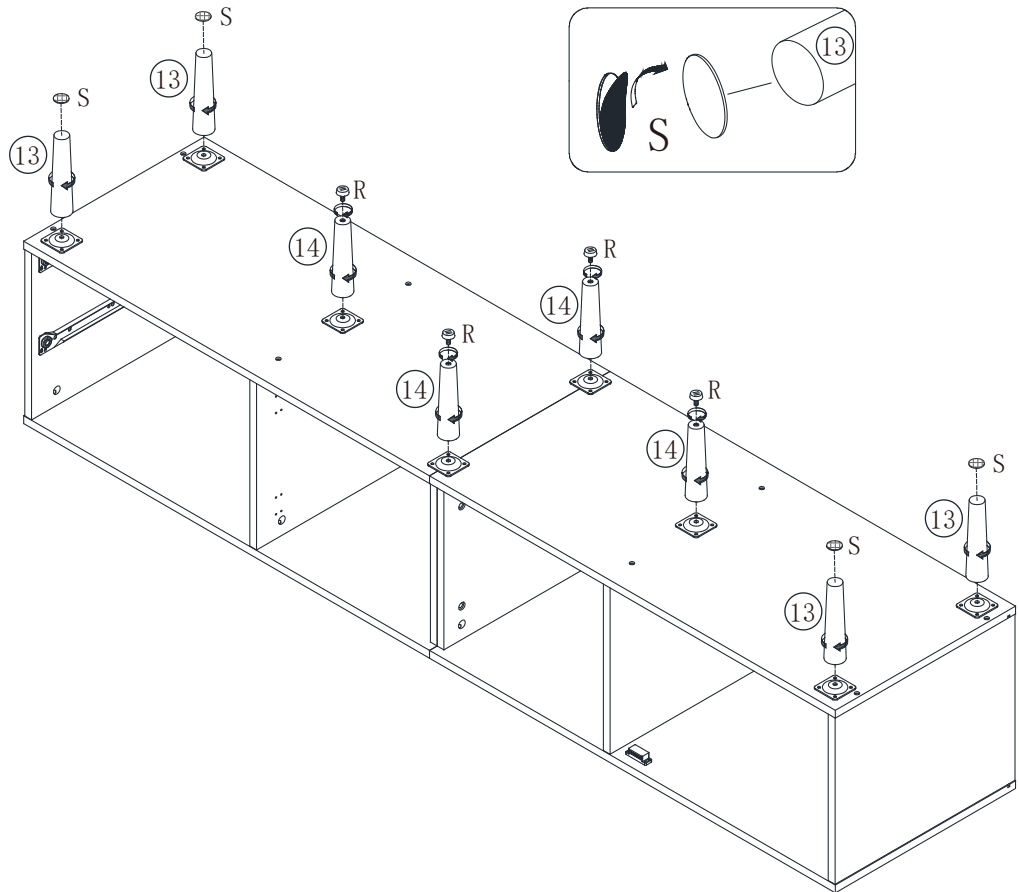


STEP 11

Sx4

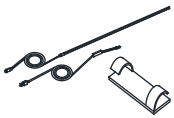


Rx4

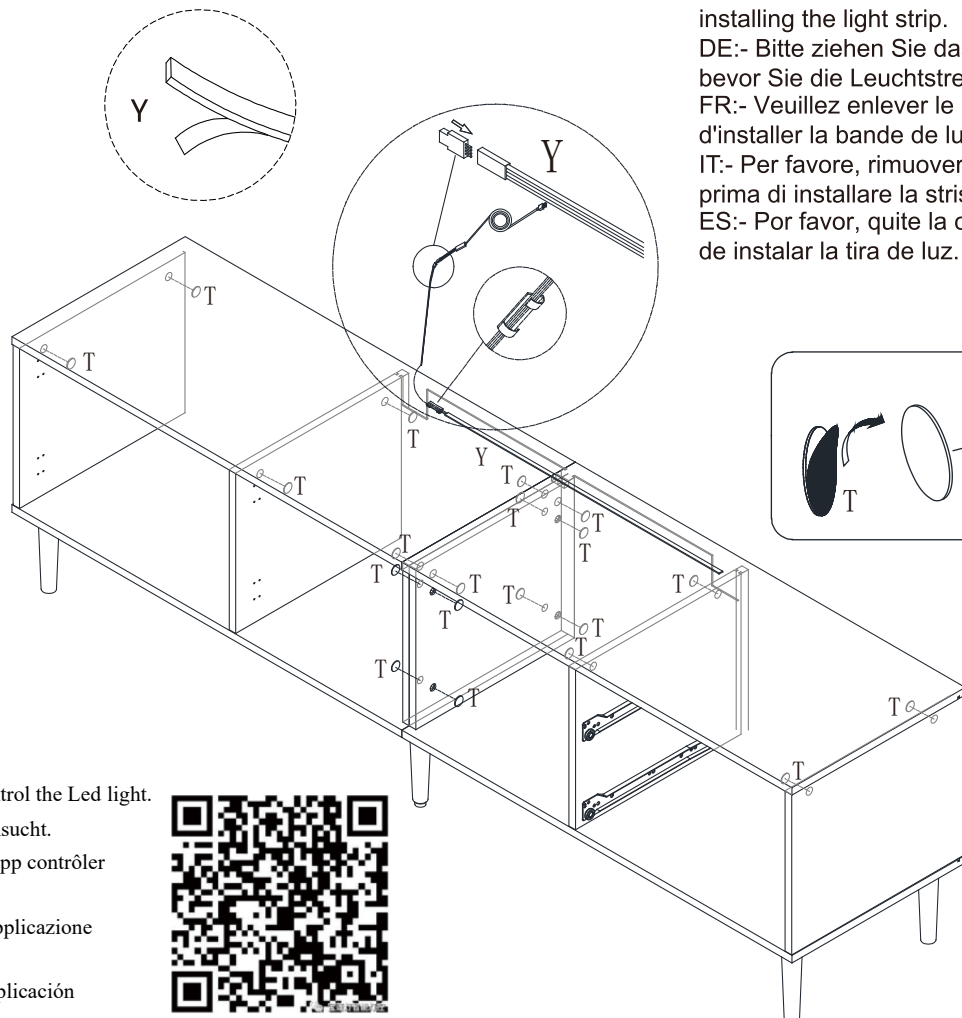


STEP 12

Yx1



Tx20



EN:- Please remove the adhesive tape before installing the light strip.

DE:- Bitte ziehen Sie das Klebeband heraus, bevor Sie die Leuchtstreifen installieren.

FR:- Veuillez enlever le ruban adhésif avant d'installer la bande de lumière.

IT:- Per favore, rimuovere la nastra adesiva prima di installare la striscia luminosa.

ES:- Por favor, quite la cinta adhesiva antes de instalar la tira de luz.

EN :Scan to download App control the Led light.

DE :Das led-display wird durchsucht.

FR :Scanner pour télécharger App contrôler la lumière Led.

IT :Scansiona per scaricare l' applicazione controlla la luce Led.

ES :Analice para descargar la aplicación control de la luz Led.

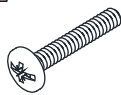


STEP 13

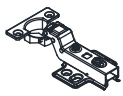
Hx12



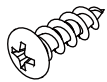
Ox2



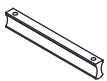
Mx6



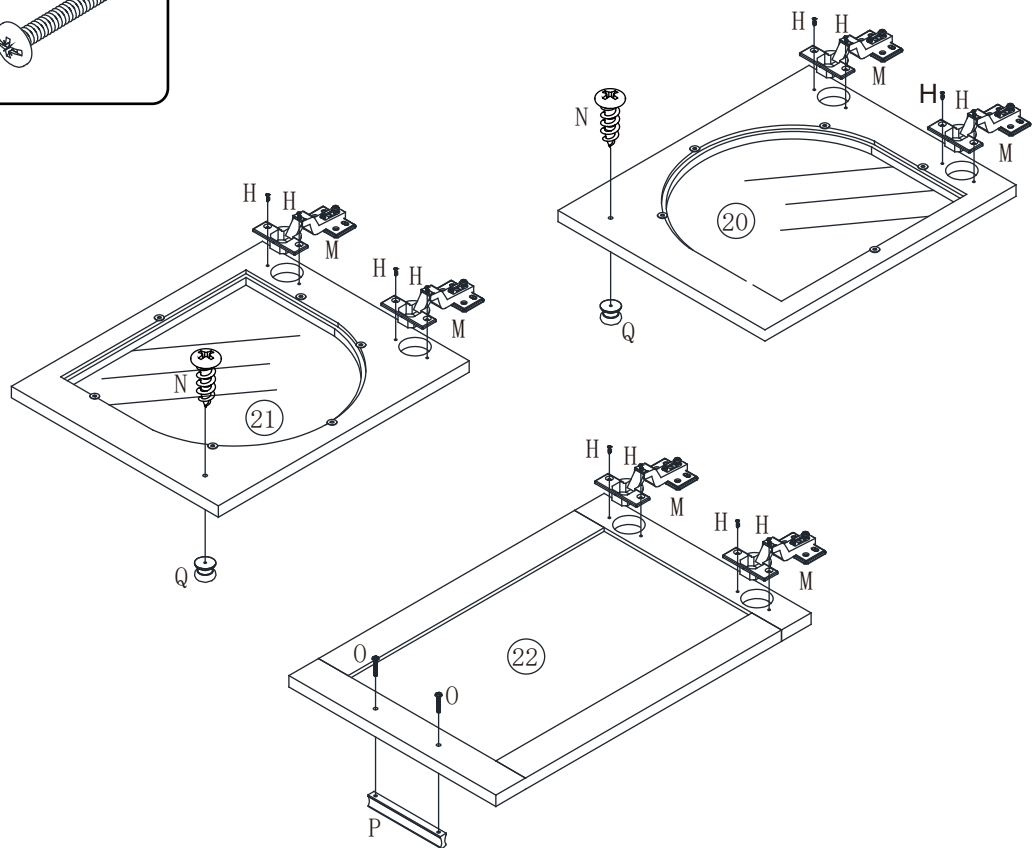
Nx2



Px1

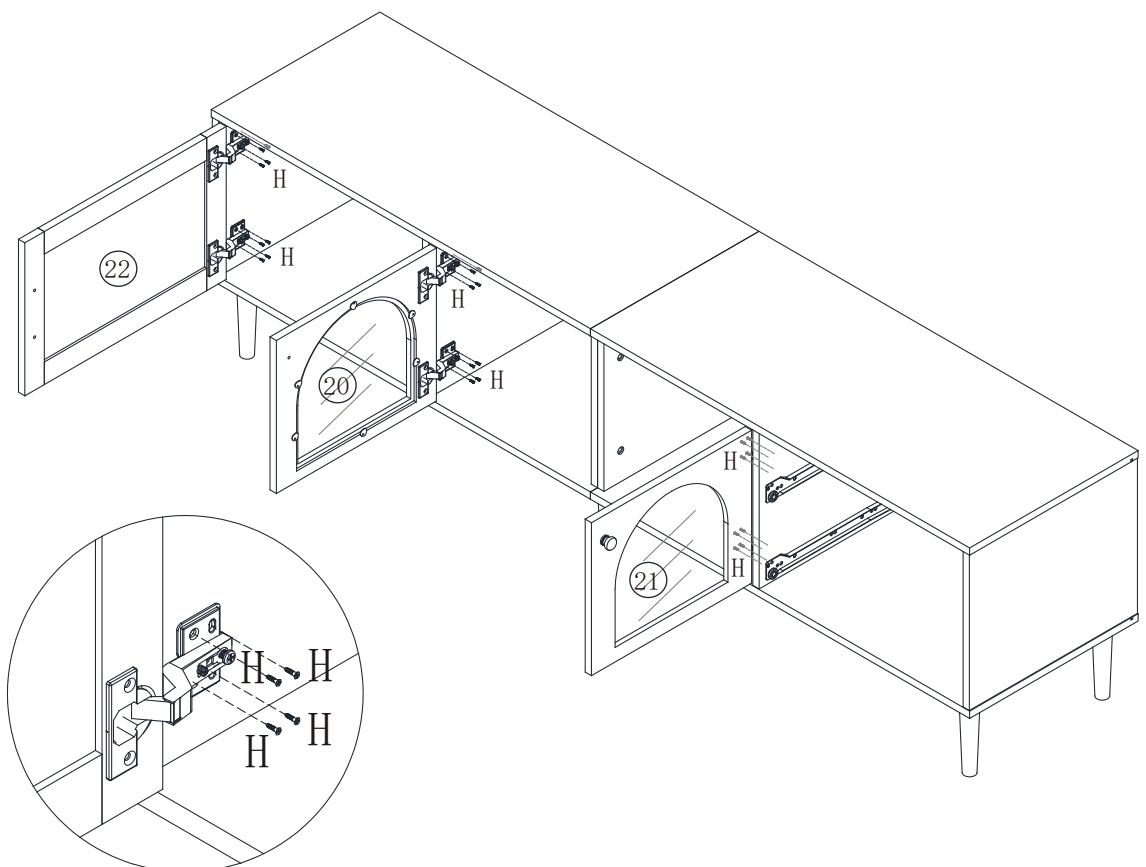
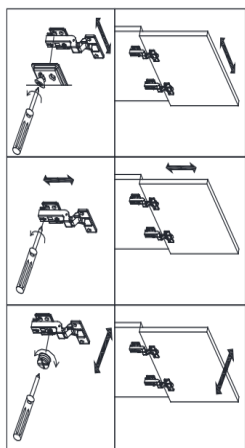


Qx2



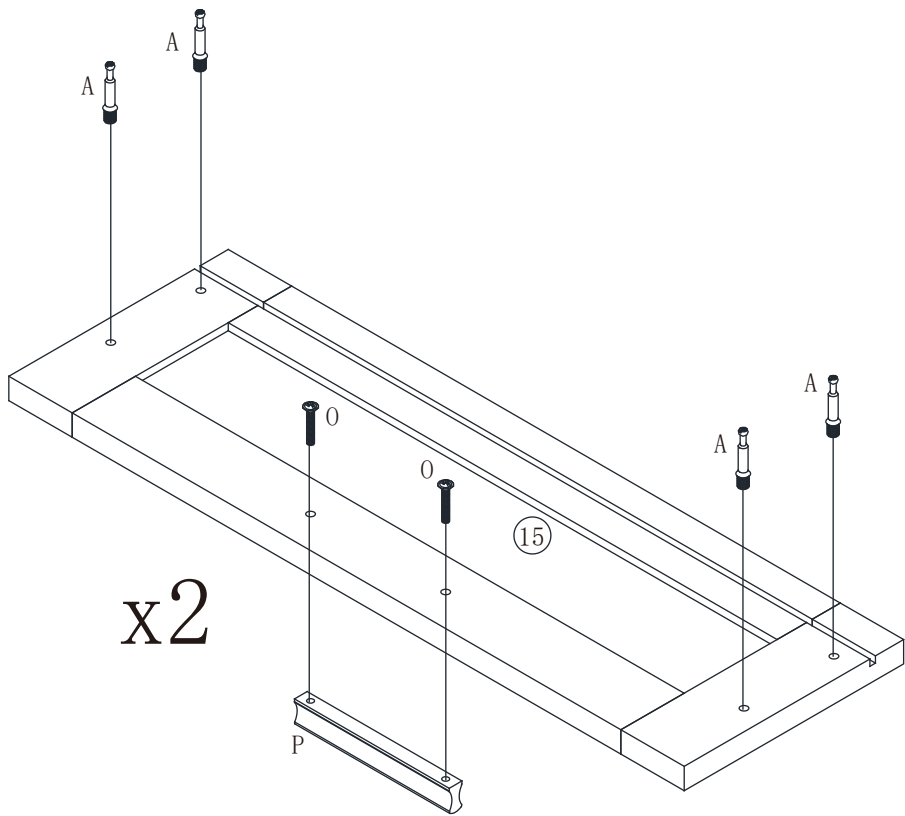
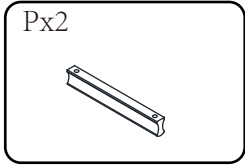
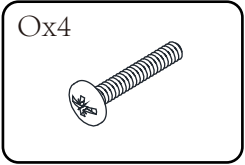
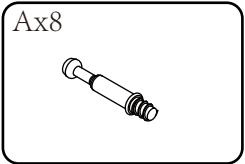
STEP 14

Hx24

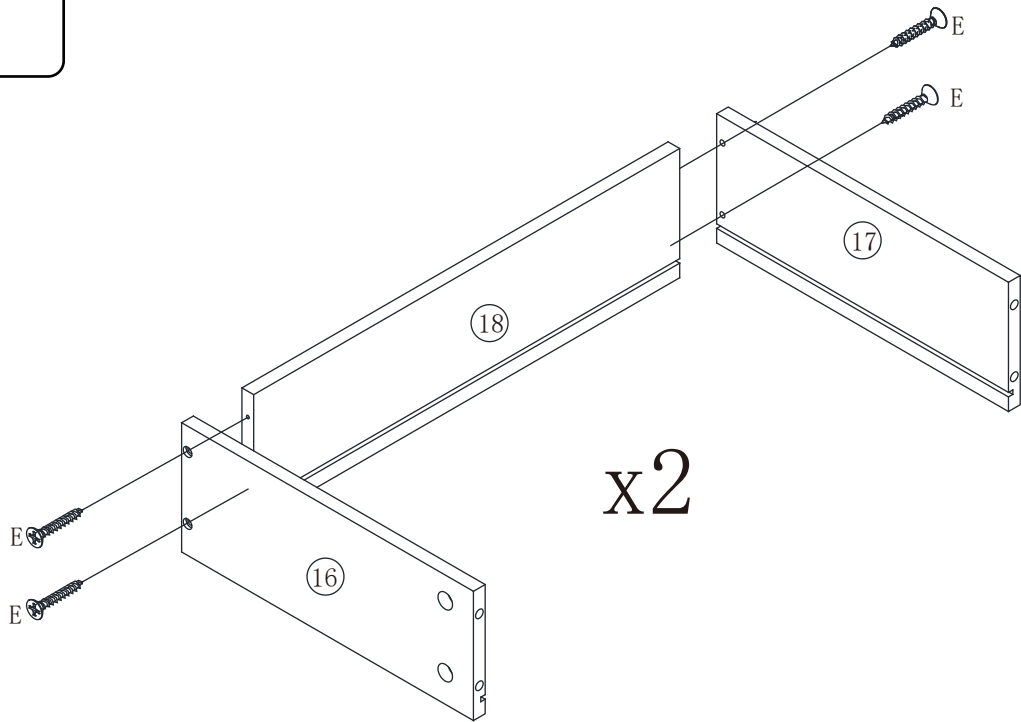
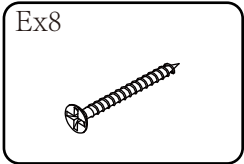


(For detailed hinge adjustment instructions, please refer to the last page.)

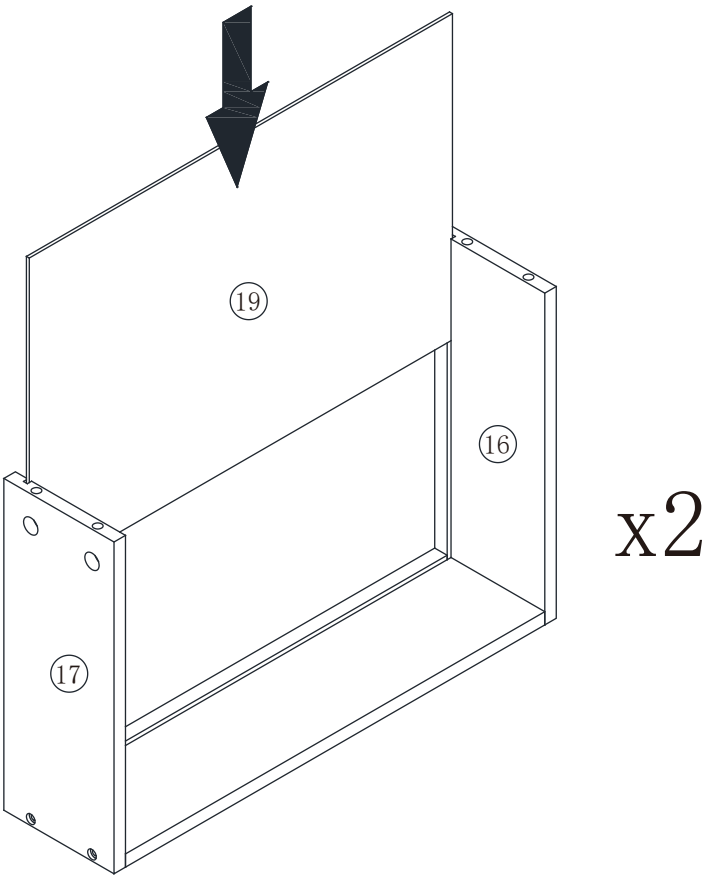
STEP 15



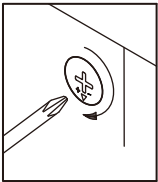
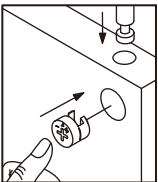
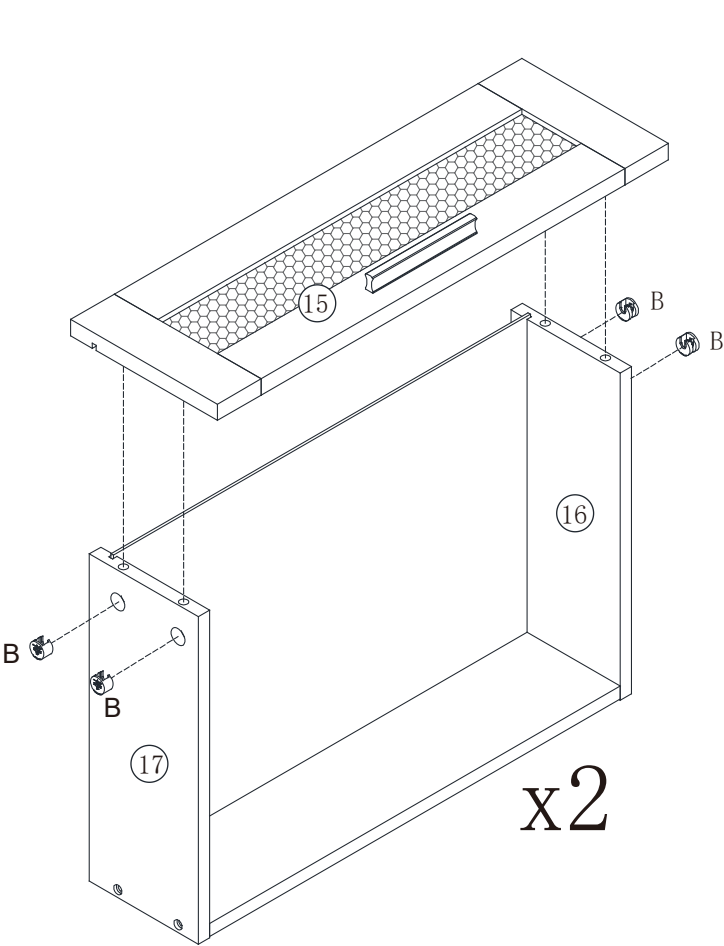
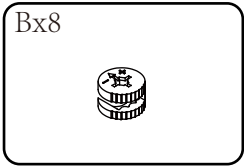
STEP 16



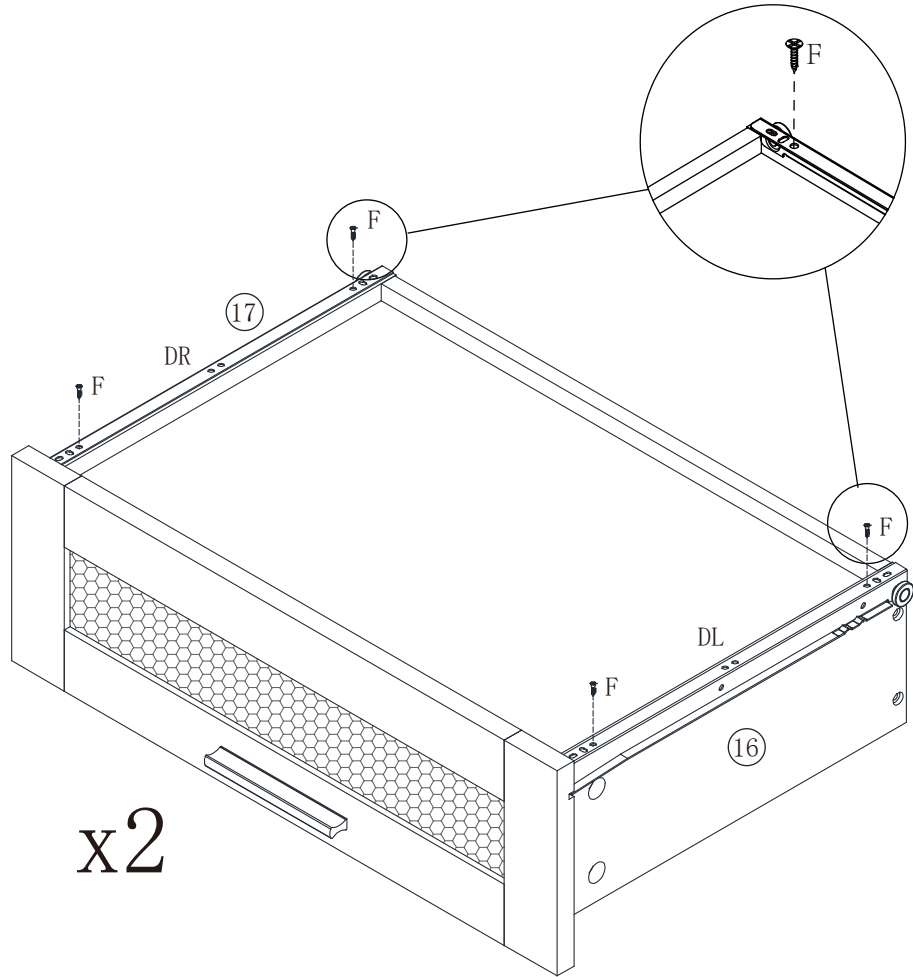
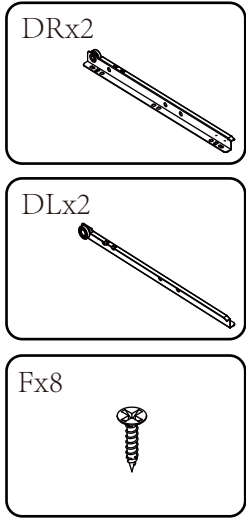
STEP 17



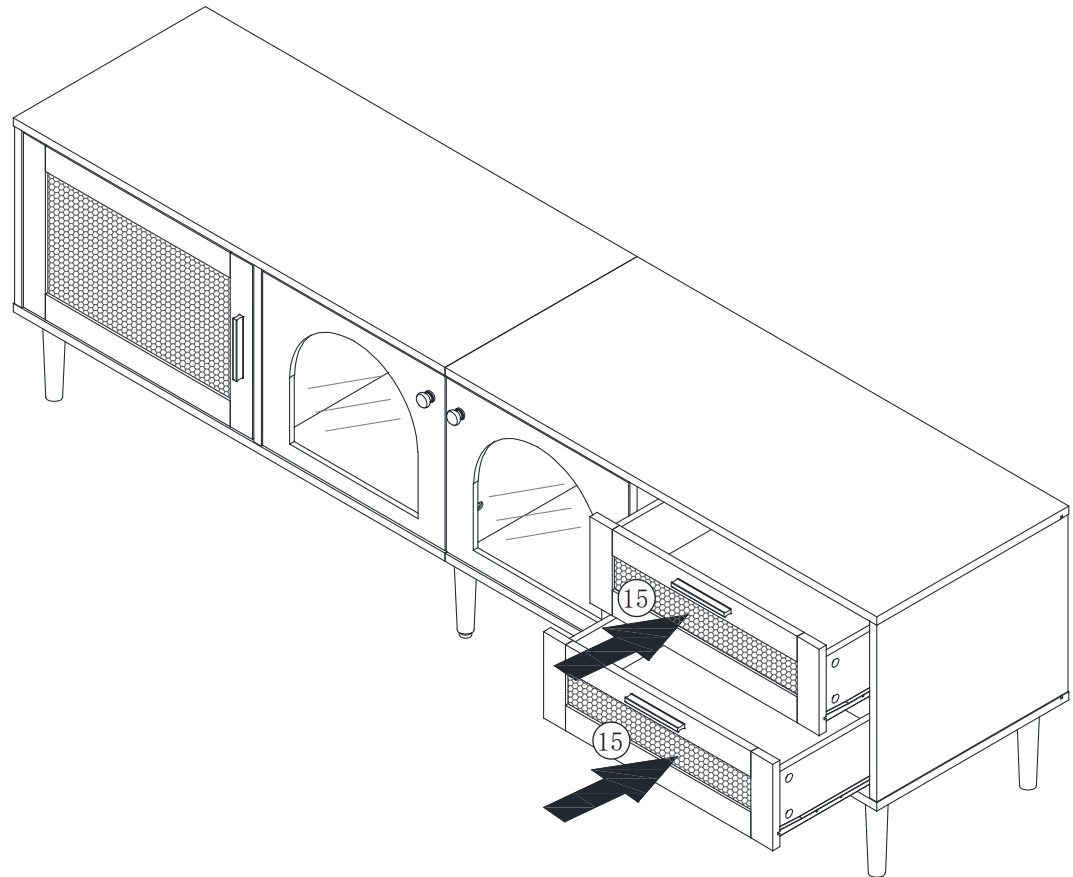
STEP 18



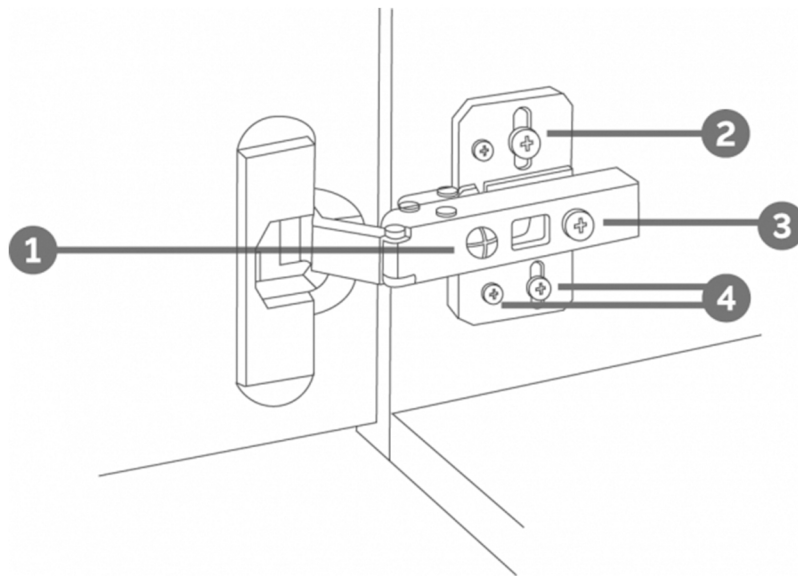
STEP 19



STEP 20

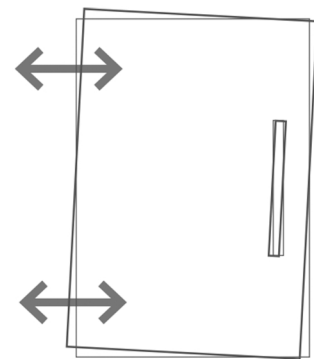


HINGE ADJUSTMENTS



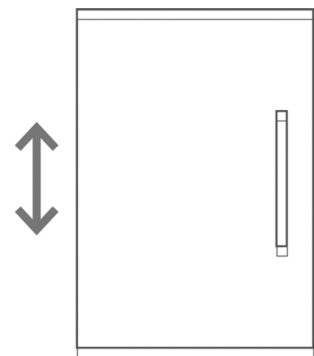
① Sideways / Tilt adjustment

Turn the screw
clockwise to move the door further away from the side of the cabinet
anticlockwise to move the door closer to the side of the cabinet



② ④ Height adjustment

While supporting the weight of the door, turn the screws
clockwise to move the door up
anticlockwise to move the door down



③ Forward and back adjustment

If the gap between the back of the door and the cabinet is too small, and the door may not close fully. Turn the screw
clockwise to decrease the gap between the door and the cabinet
anticlockwise to increase the gap between the door and the cabinet

