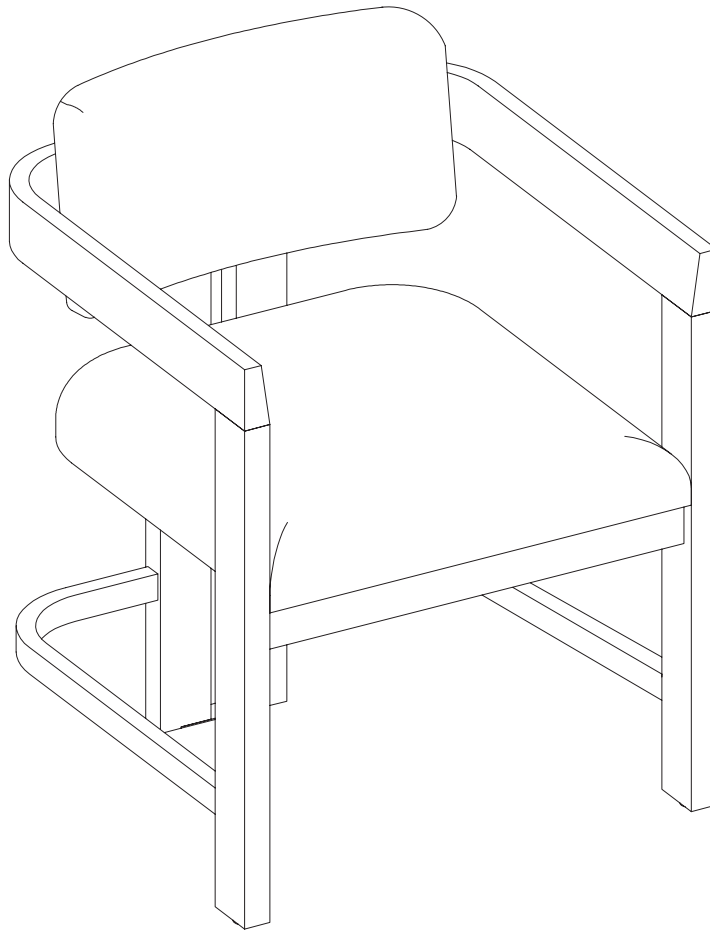


Let's build the

Veya Dining Chair

SKU 24910



Scan me!

Free Lifetime
Guarantee

 **nathan james**

25-0828-VN

Ok, let's get rolling

This should be easy, just follow our instructions and you will be back to Netflix in no time.

Estimated time for assembly



15:00

What you need

- Some of your favourite bubbly or your preferred relaxant
- Use the packaging carton as a working surface to prevent product damage during assembly
- Phillips head screwdriver

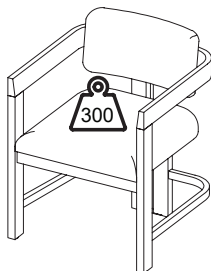
Do not use a drill



Weight Limitation



300
lbs



Toll-free at 1-866-619-1004
Help@nathanjames.com
Nathanjames.com/help

What's included

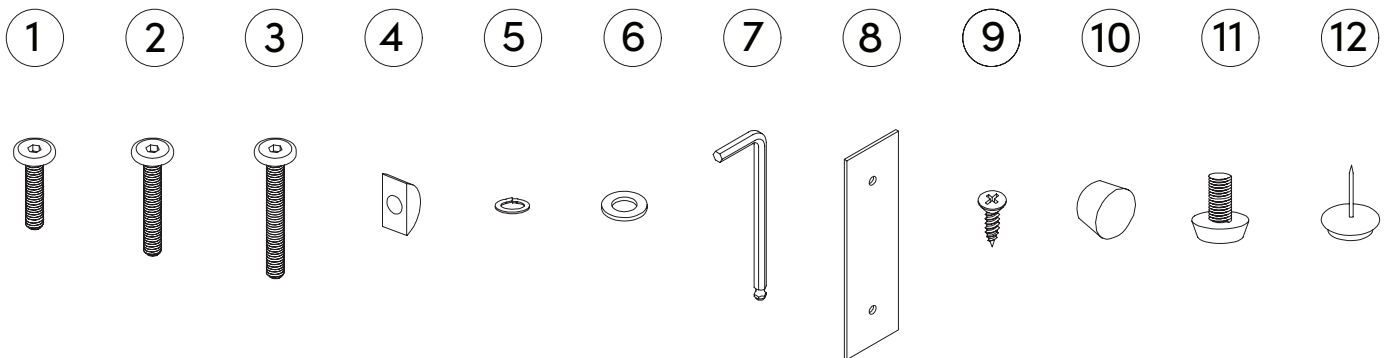
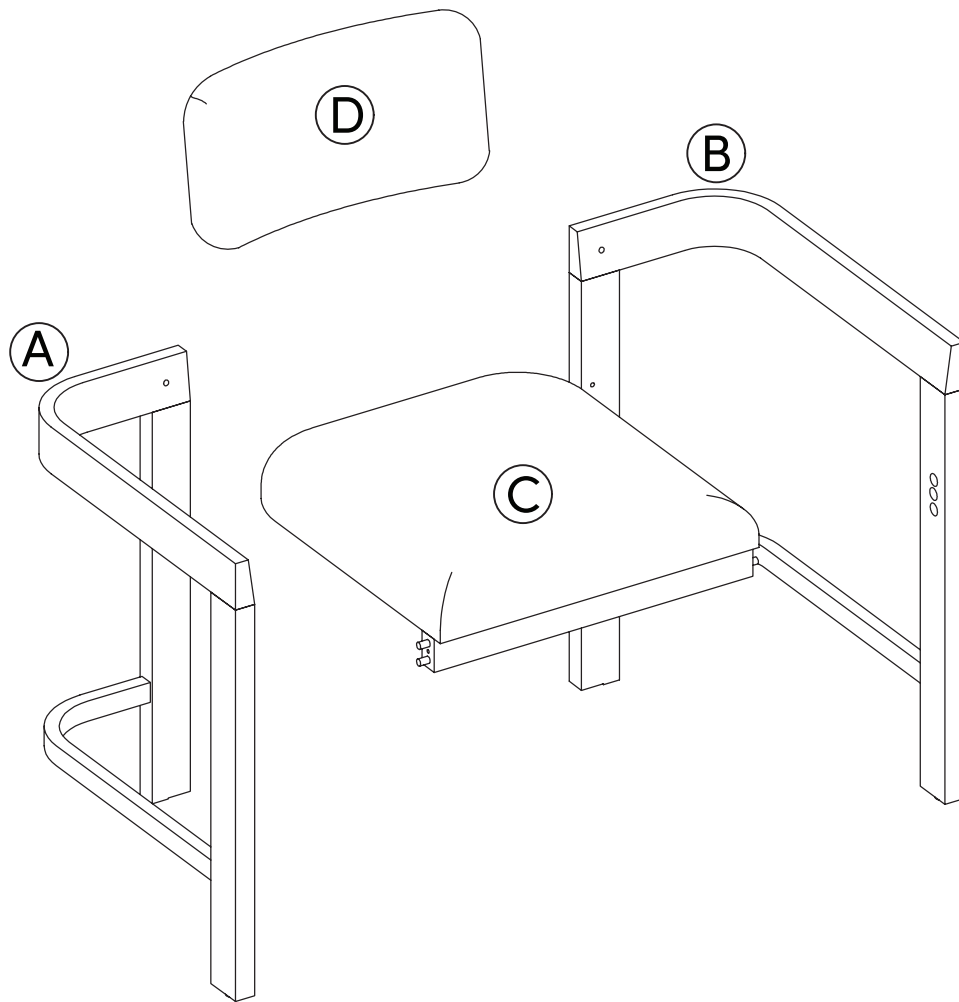
Description		Qty
A	Leg Frame Sub-Assembly (Left)	1
B	Leg Frame Sub-Assembly (Right)	1
C	Seat Cushion + Frame Assembly	1
D	Backrest Cushion	1
1	Ø1/4" x 38mm Hex Button Head Bolt	2
2	Ø1/4" x 50mm Hex Button Head Bolt	2
3	Ø1/4" x 63mm Hex Button Head Bolt	2
4	Ø1/4" Half-Moon Washer	2
5	Ø1/4" x 10mm Spring Washer	6
6	Ø1/4" x 16mm Flat Washer	4
7	Allen Key	1
8	Metal Bracket	1
9	M4 x 15mm Screw	2
10	Wood Plug	2
11	Leveler (Extra)	2
12	Plastic Nailhead Footpad (Extra)	2

Scan me!

Free Lifetime
Guarantee



The goods



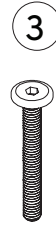
IMPORTANT

1. Do not tighten bolts / screws completely until all bolts / screws are lined up and inserted into holes.
2. Do not over tighten screws and bolts to avoid stripping.
3. Please use hand tools to assemble this product. Do not use power tools.

Step 1

Let's get this thing fired up!

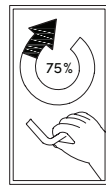
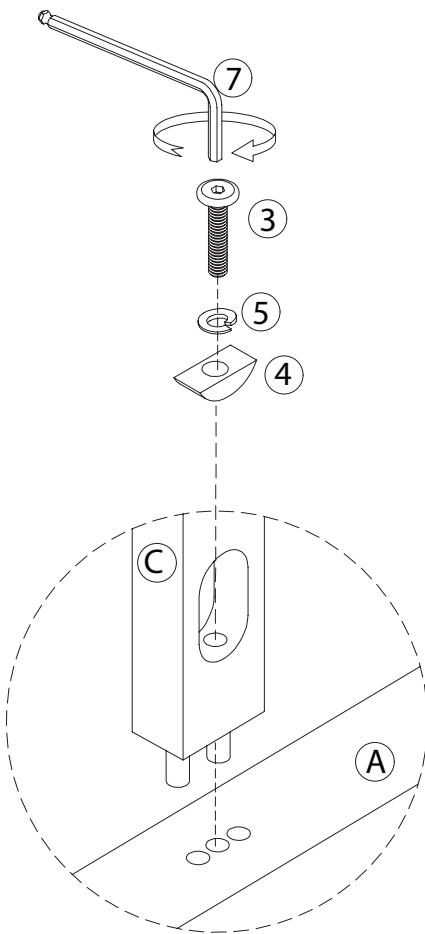
Install the Seat Cushion + Frame Assembly (C) onto the Leg Frame Sub-Assembly (Left) (A) using the Hex Button Head Bolt (3), Spring Washer (5), and Half-moon Washer (4). Tighten with the Allen Key (7).



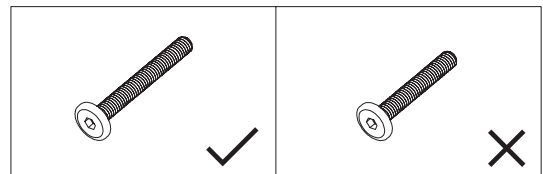
x1pc

x1pc

x1pc

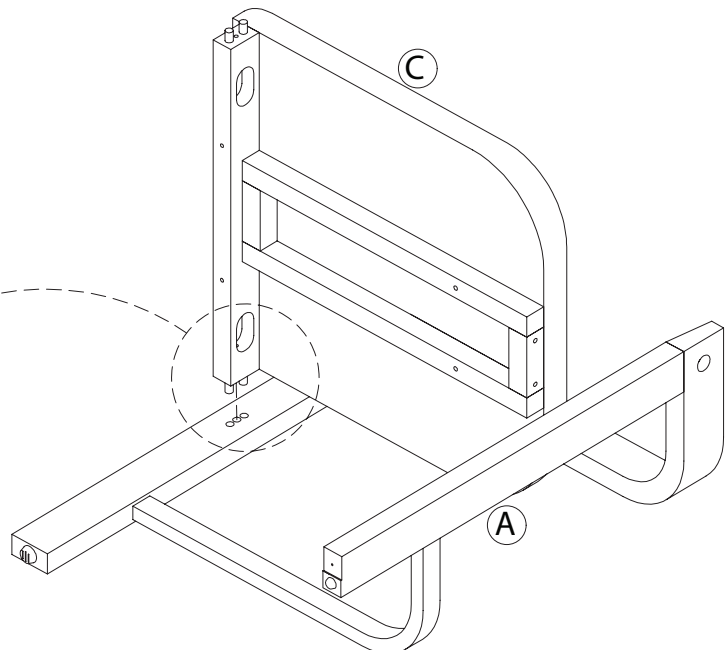


Please be careful not to use the wrong bolt when installing Part C.



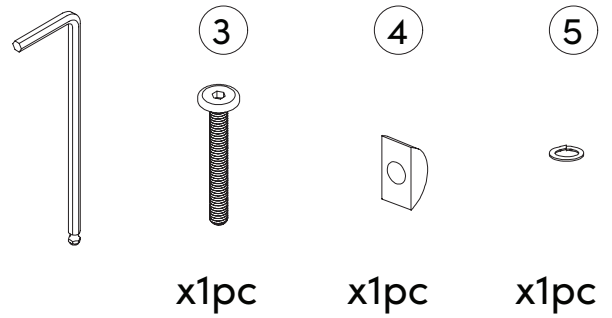
(3) Ø1/4" x 63mm


(2) Ø1/4" x 50mm

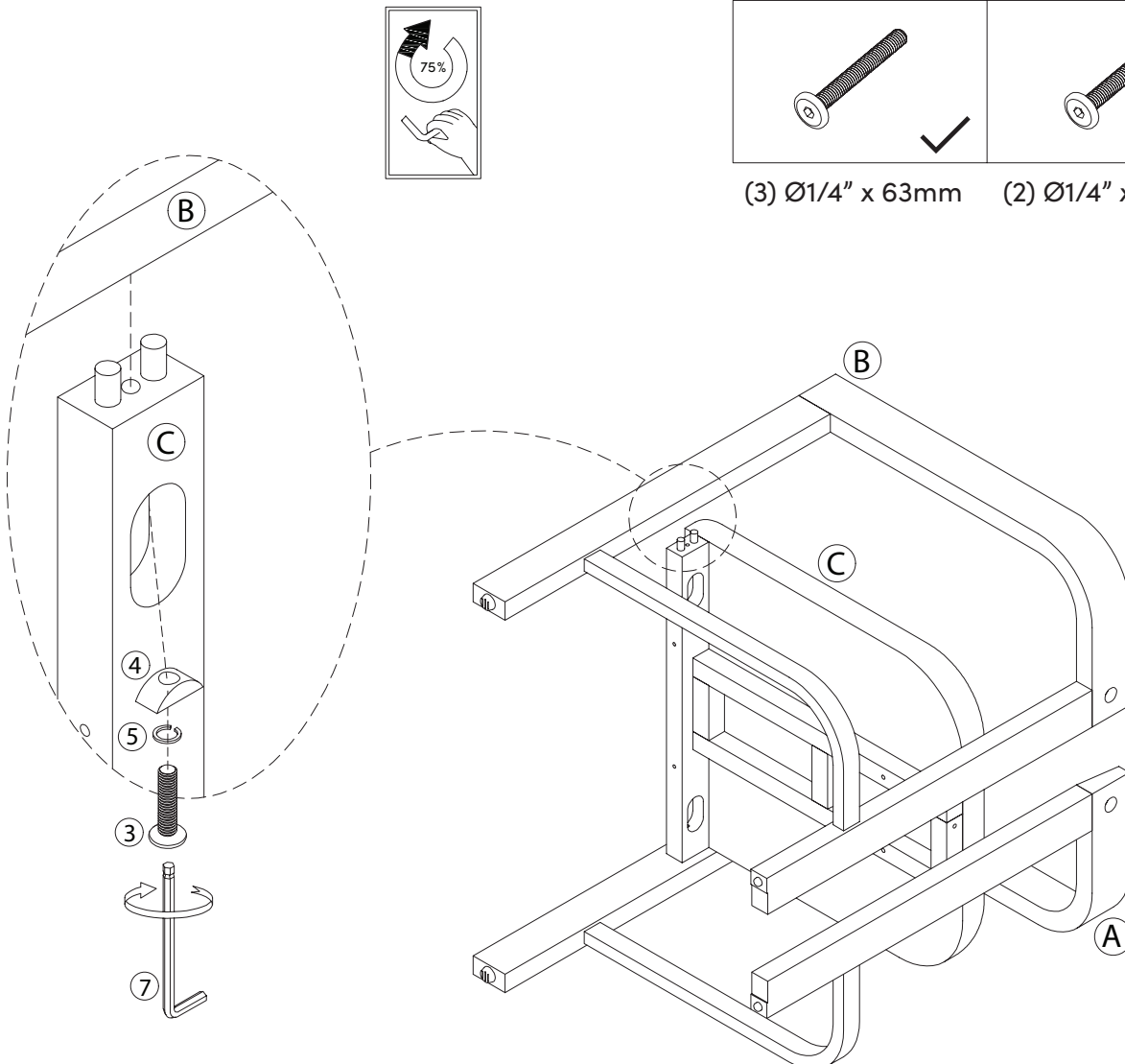
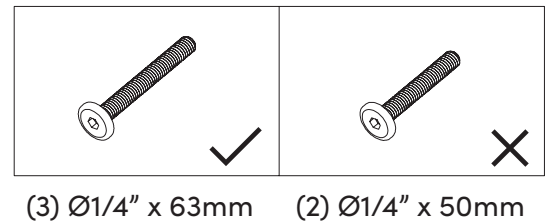


Step 2

Now, assemble the Leg Frame Sub-Assembly (Right) (B) onto the other end of the Seat Cushion + Frame Assembly (C) using the Hex Button Head Bolt (3), Spring Washer (5), and Half-moon Washer (4). Tighten with the Allen Key (7).

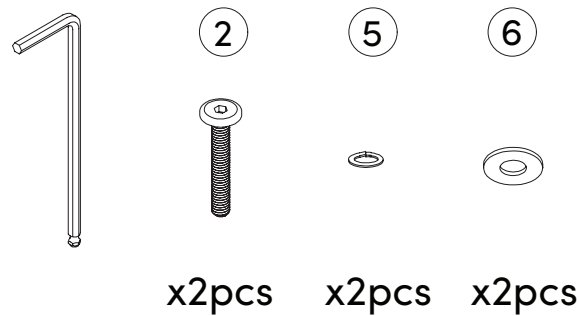



 Please be careful not to use the wrong bolt when installing Part C.

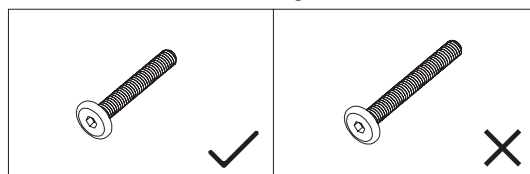


Step 3

Flip the chair upside down.
Then, using the Hex Button
Head Bolt (2), Spring Washer
(5), and Flat Washer (6),
secure the Seat Cushion +
Frame Assembly (C) to the Leg
Frame Sub-Assembly (Left) (A)
and Leg Frame Sub-Assembly
(Right) (B). Tighten with the
Allen Key (7).

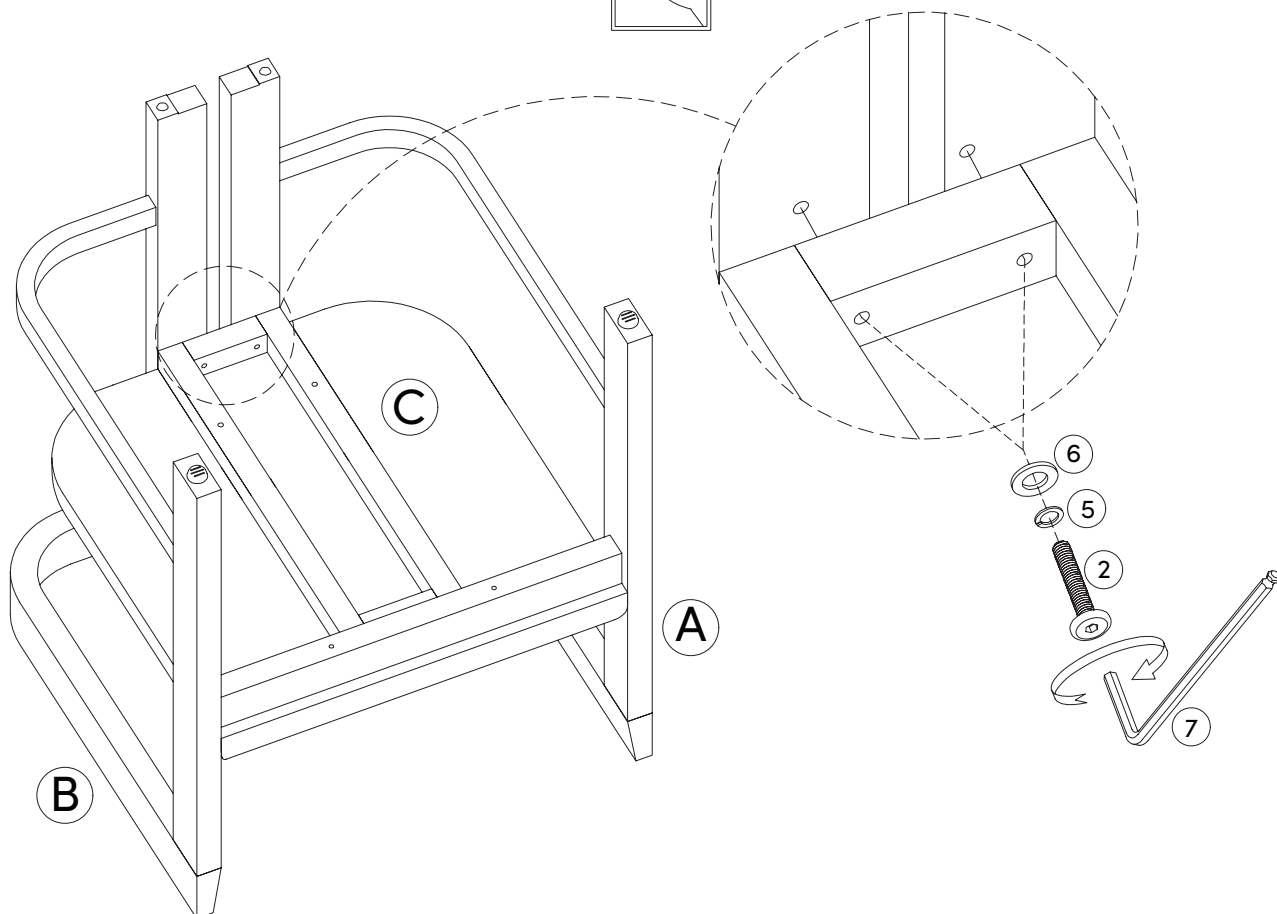
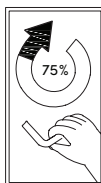


 Please be careful not to use the wrong
bolt when installing Part C.



(2) Ø1/4" x 50mm

(3) Ø1/4" x 63mm

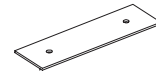


Step 4

Now, use the Metal Bracket (8) to secure the two back legs of the Leg Frame Sub-Assembly (Left) (A) and Leg Frame Sub-Assembly (Right) (B) using the Screws M4 x 15mm (9).



8

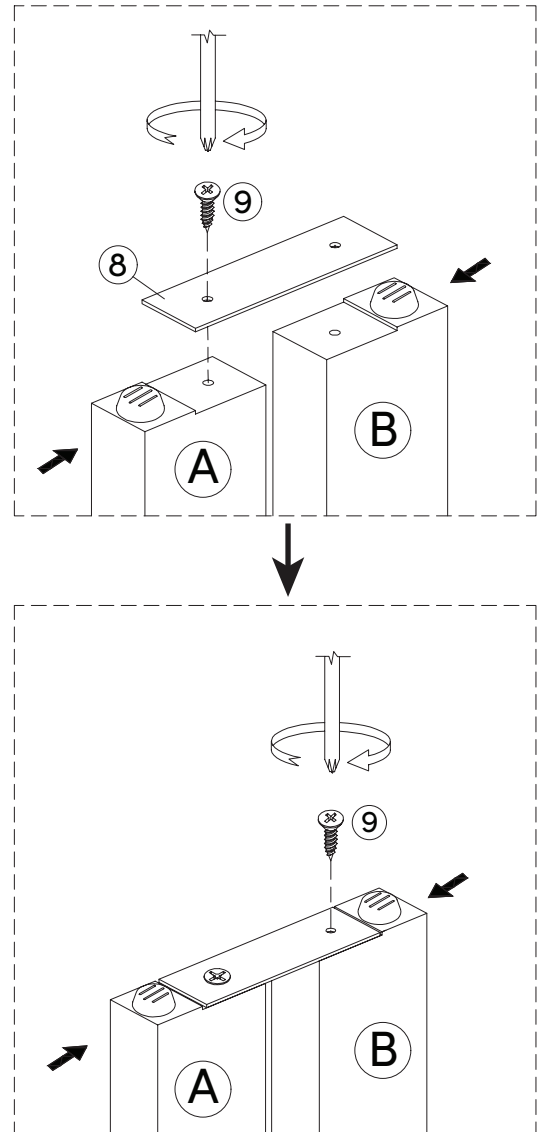
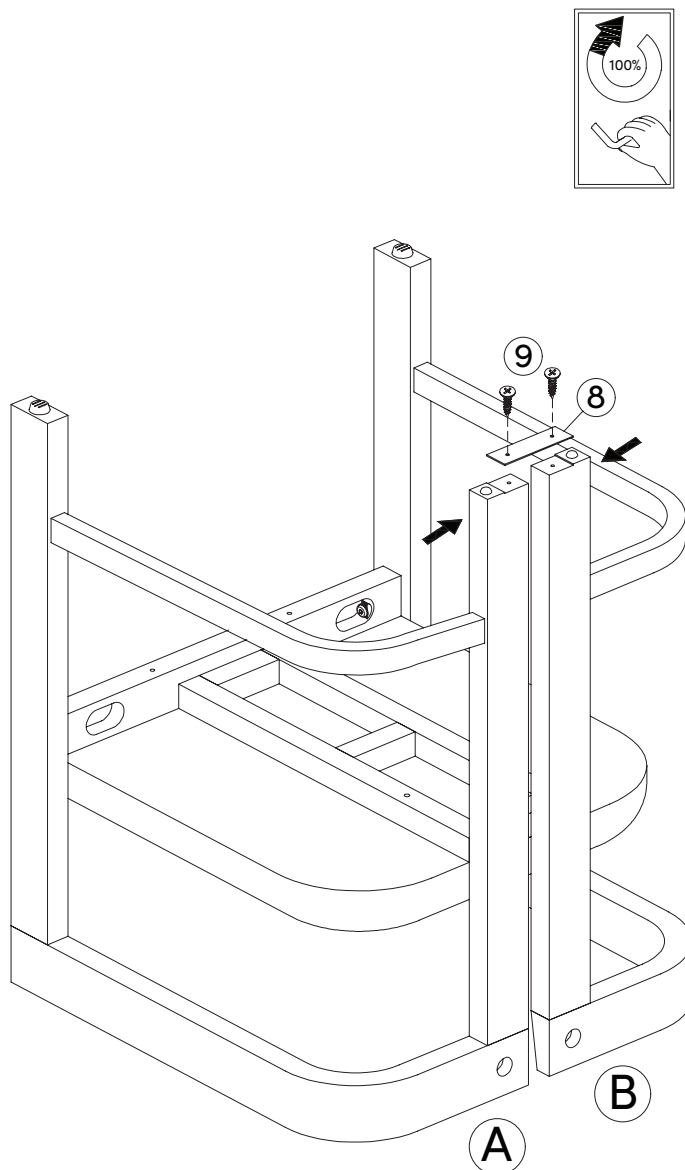


x 1pc

9

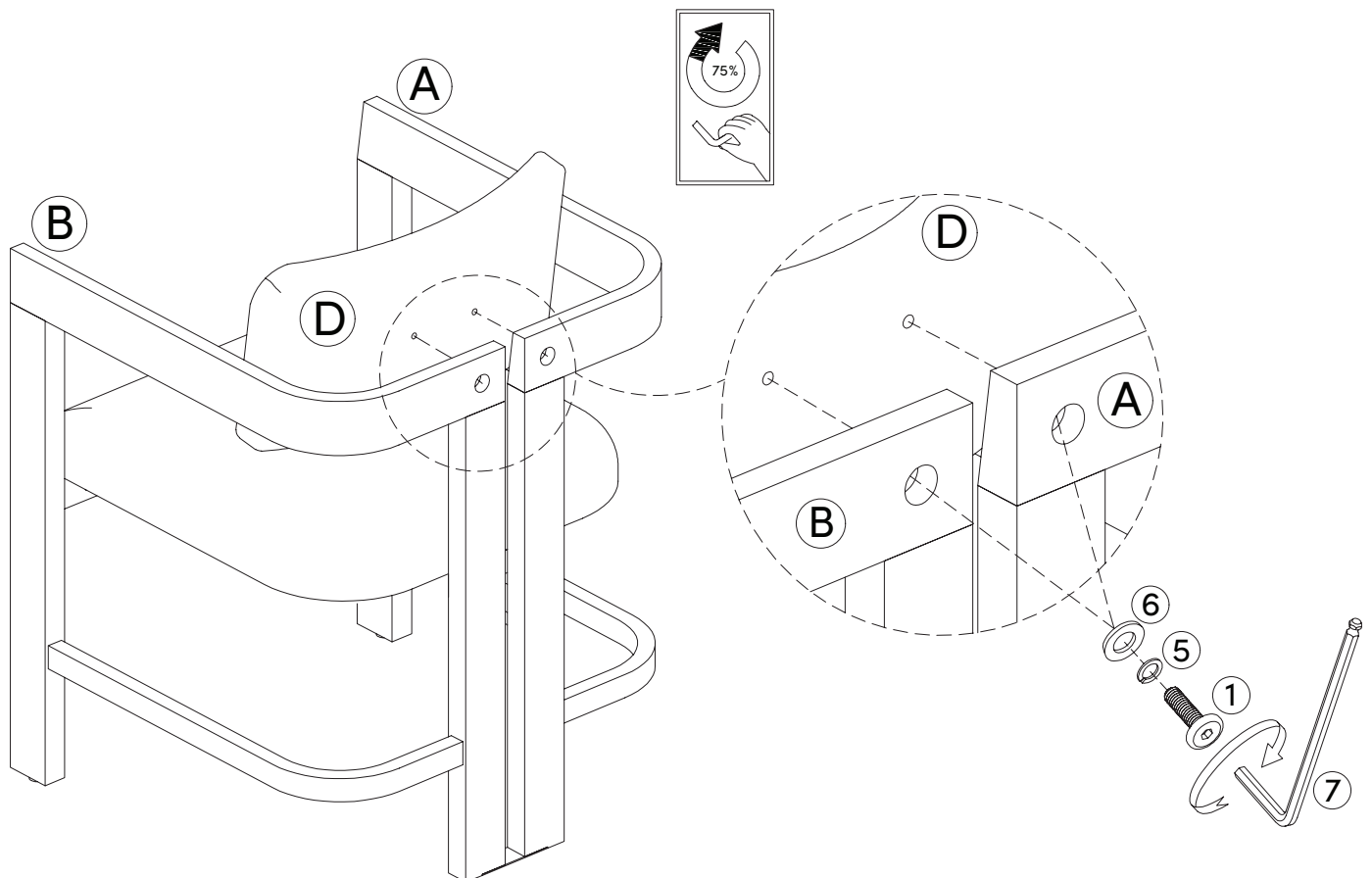
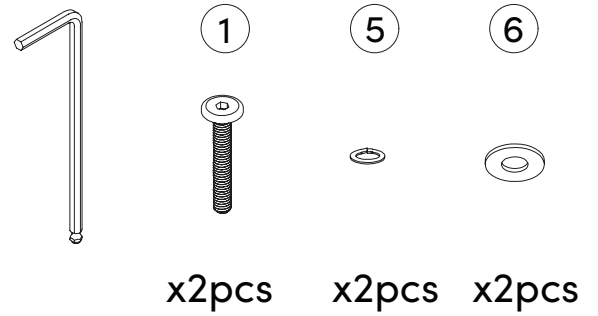


x 2pcs



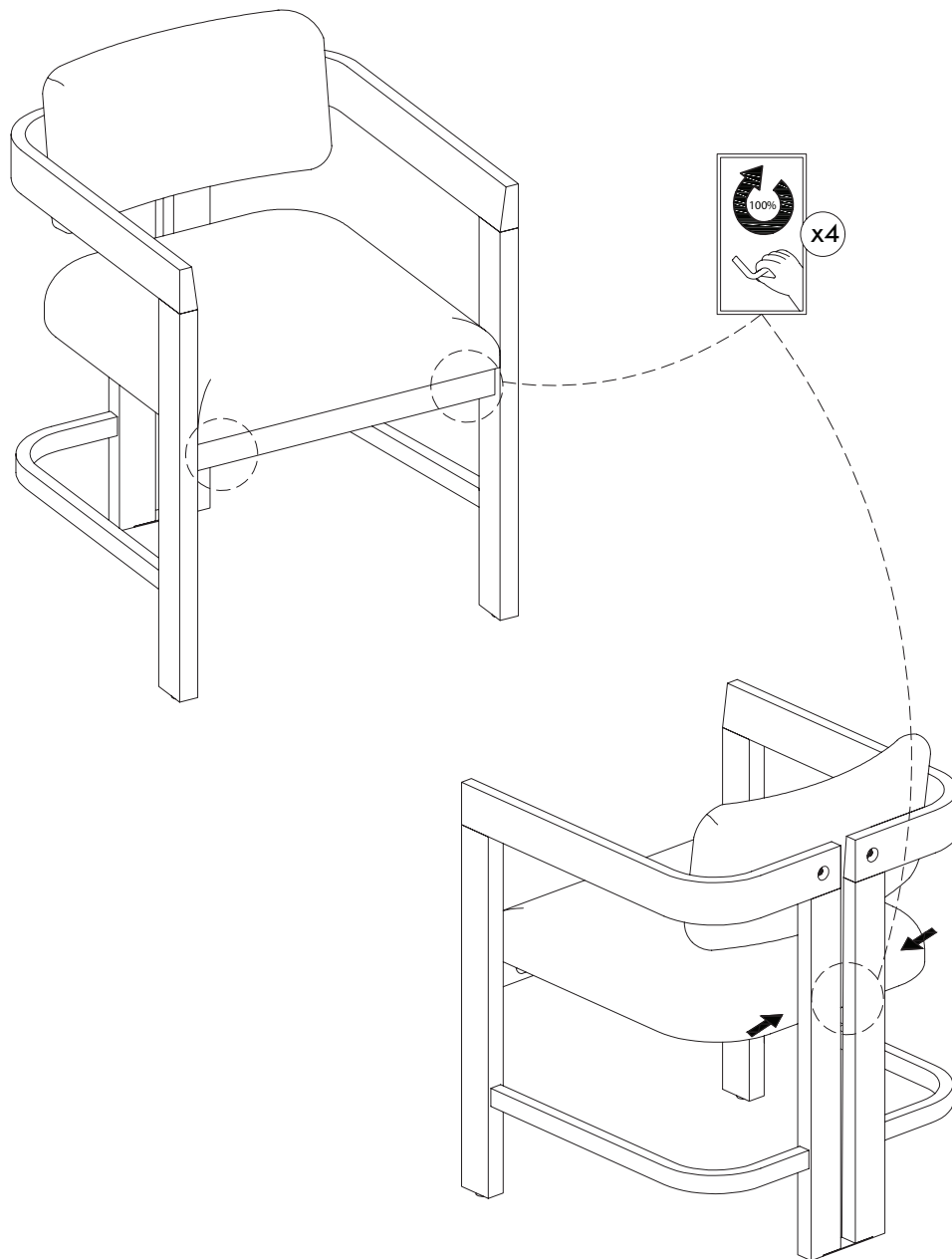
Step 5

Attach the Backrest Cushion (D) to the Leg Frame Sub-Assembly (Left) (A) and the Leg Frame Sub-Assembly (Right) (B) using the Hex Button Head Bolt (1), Spring Washer (5), and Flat Washer (6). Tighten with the Allen Key (7).



Step 6

Once everything is lined up and partially secured, go ahead and re-tighten all previous connections to 100% tighten.

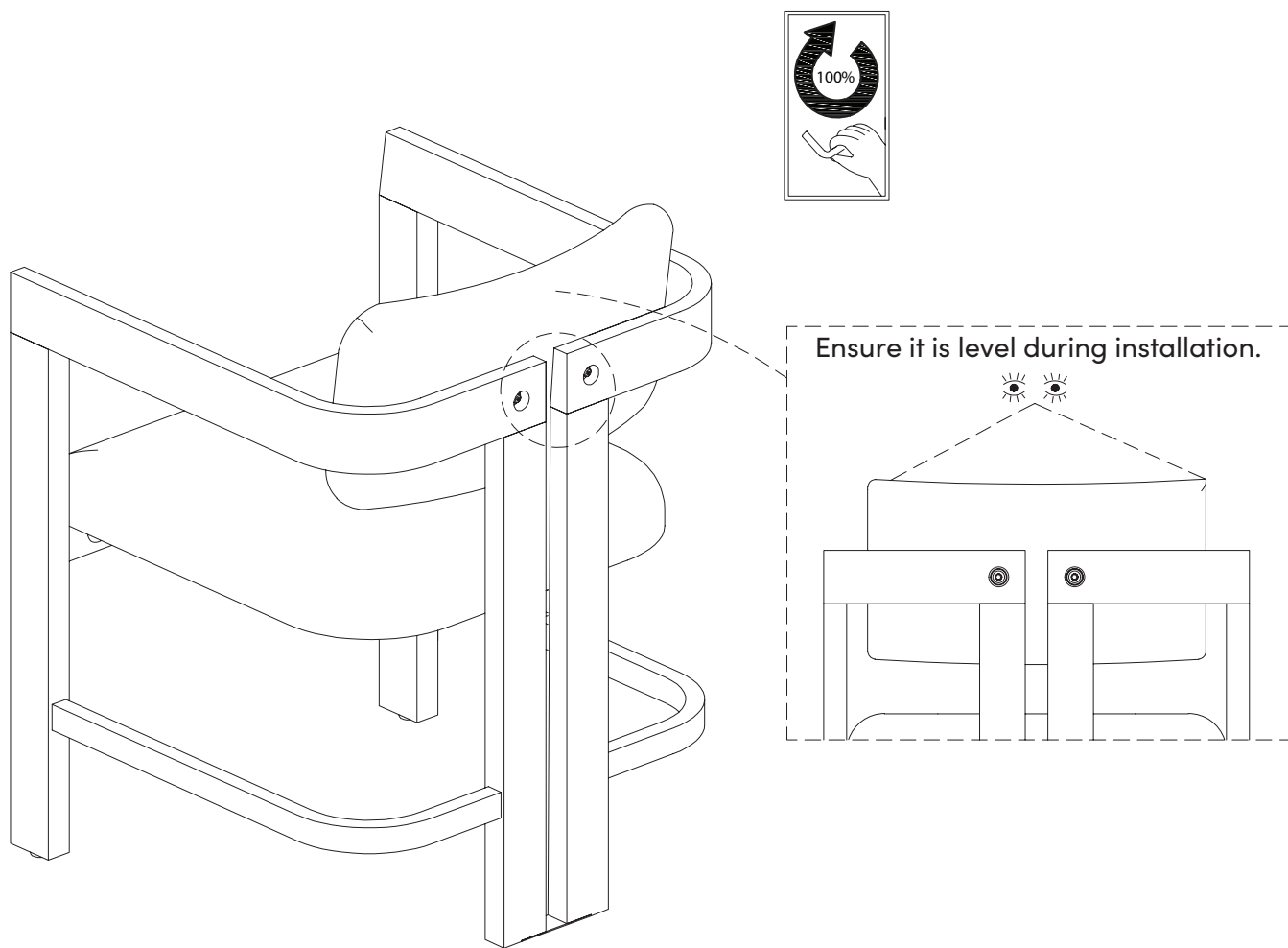


We want your products to last as long as possible, so we recommend that you tighten the bolts & screws 2 weeks after assembly and for added safety, check the tightness of all bolts & screws every 2 months.

Step 6 cont.

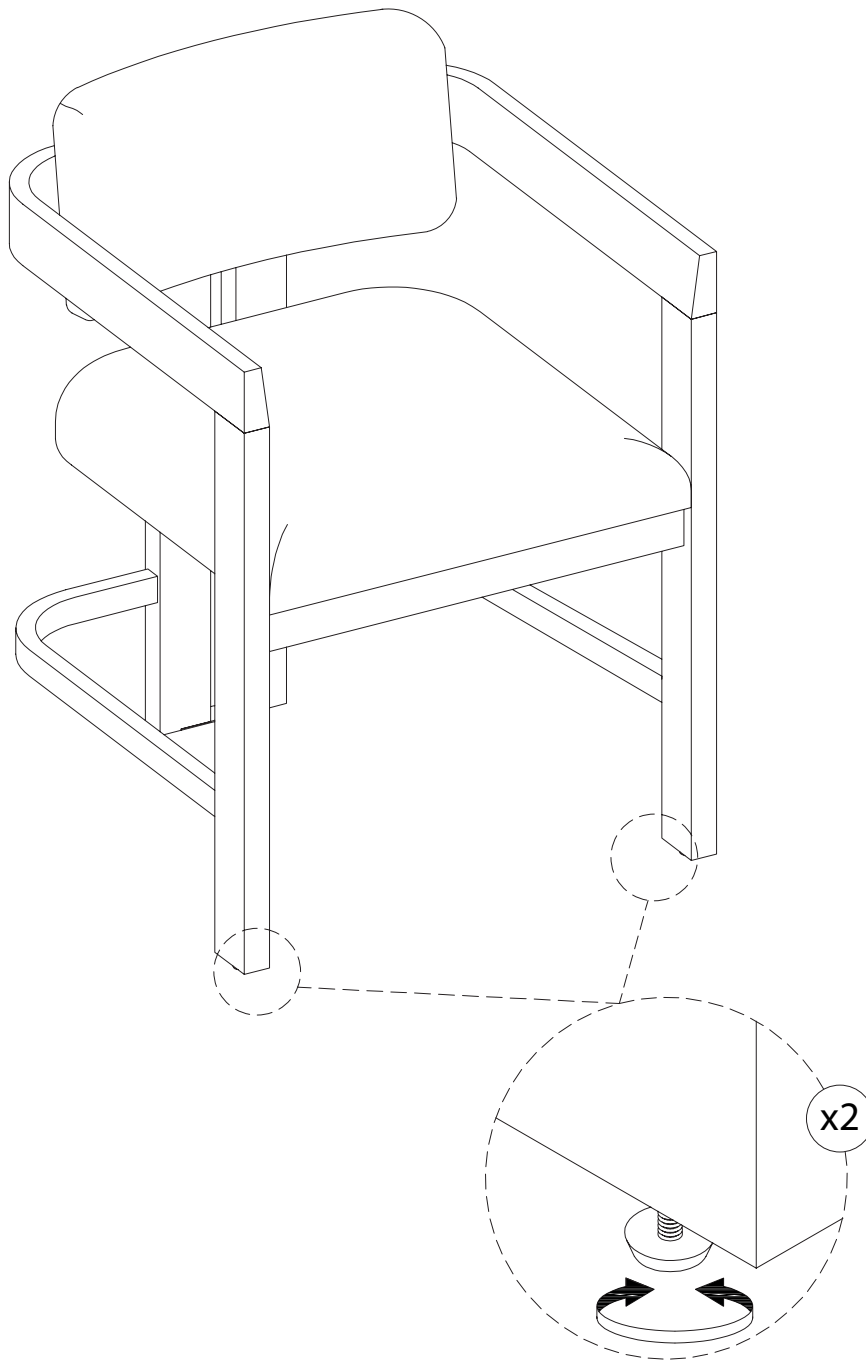
You are only two more steps away from finishing.

Please adjust the Backrest Cushion (D) until it is level.
Then, firmly tighten the two bolts you secured in step 5.



Step 7

You're within minutes of pressing play on Netflix!



HELPFUL TIP:

Adjust the levelers to help further level the dining, if need be.

10

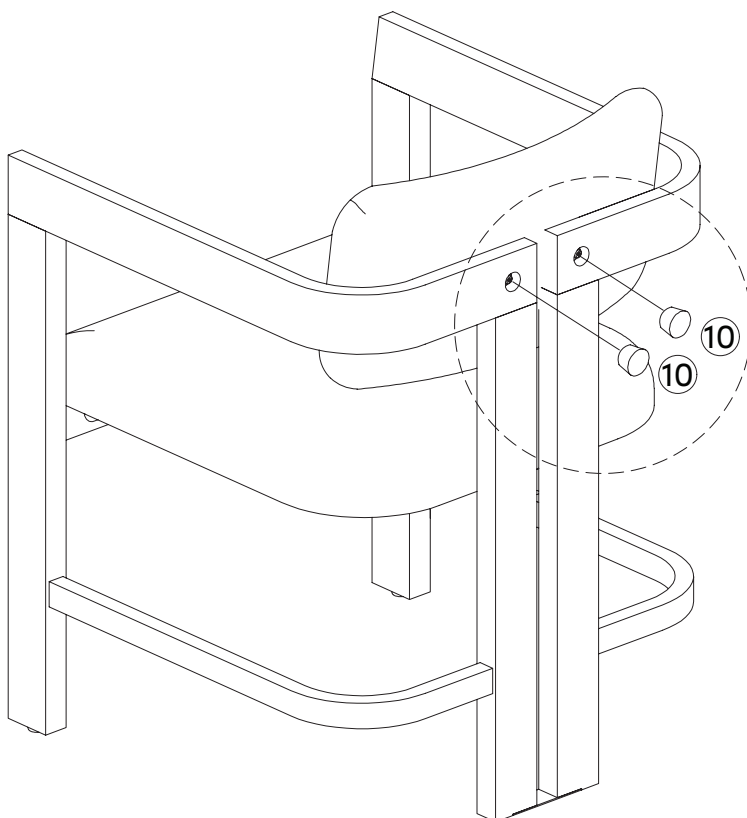


x2pcs

Step 8

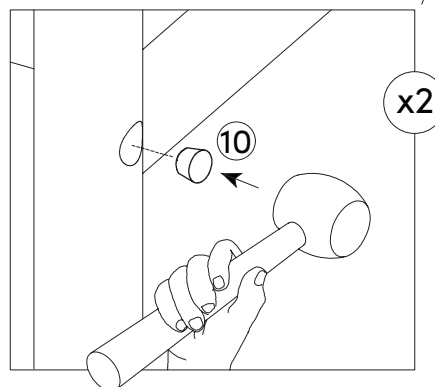
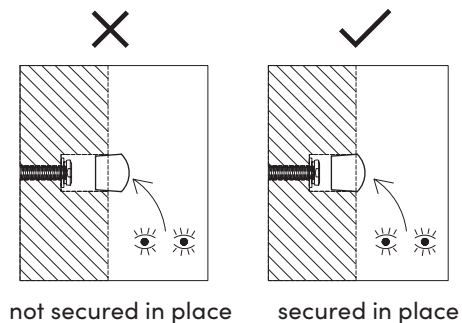
You made it to the last step!
Now insert the Wood Plugs
(10) into the holes in the back
of the stool.

Time to order some pizza and
enjoy your new stool!



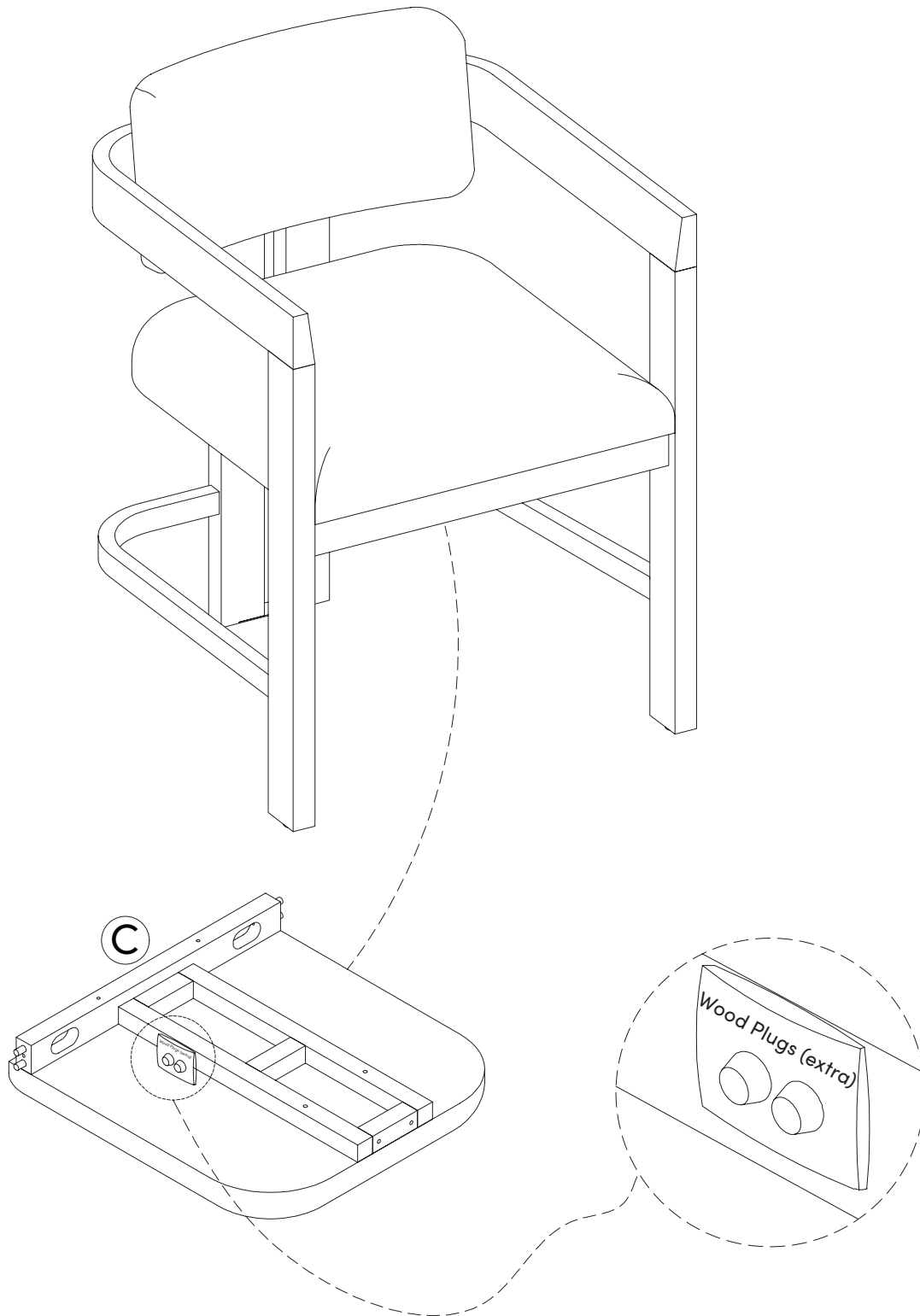
HELPFUL TIP:

It is recommended to use a Rubber
Mallet or something similar to tap the
Wood Plugs securely into place.



Step 8 cont.

If you haven't already noticed, we affixed 2 extra Wood Plugs to the underside of your seat frame for your convenience.



No heartburn, when we handle the return

Give us a call **1-866-619-1004** or shoot us a message
at **help@nathanjames.com** we will issue you a free
replacement with **zero hassle**.

Our way



Give us a call



Replacement



You

Their way



Re-package item



Schedule pick up



Track package



Replacement



You

We really don't want you to go through the hassle of re-packaging your item
and sending it back, because let's be honest...nobody has time for that.

Safety first, fun later

We want your product to last as long as possible, so we recommend that you tighten the screws 2 weeks after assembly and for added safety check the tightness of all screws every 2 months.

For proper care and treatment, please check our website at **NathanJames.com/products**

Safe use of this product starts with you.

Use this product responsibly with the primary concern for your safety. Follow assembly instructions carefully and inspect product upon receipt and each use.

Nathan James and its parent companies cannot be held legally responsible for any injuries or death resulted from failure to follow instructions or improper use of this product.

Do not modify the structure of this product in any way.

Our products have been tested to meet specific safety measures as they were originally intended to be sold. Any modifications will present the risk of creating significant safety issues which NJ will not be responsible for.

Proper use

- | | |
|---------------|--------------------------------|
| DO NOT | use for commercial purposes |
| DO NOT | frolic on dining chair |
| DO NOT | use dining chair as foot stool |
| DO NOT | leave spilled liquid on seat |
| DO NOT | use dining chair if damaged |
| DO NOT | make temporary repairs |
| DO NOT | use outdoors |

We are only in business if you're happy

For starters, thanks for being you.

☎ Toll-free at 1-866-619-1004

✉ Help@nathanjames.com

🌐 NathanJames.com/help

We do our best to ensure your furniture arrives without any problems, but occasionally mistakes happen—as humans we are imperfect beings. In the event that a part is damaged or missing, we will be more than happy to provide you with replacement part(s) for free.

Lifetime Guarantee

We believe in making things that last. That's why every product is backed by our Lifetime Guarantee. No hidden clauses. No runaround. If it breaks, we'll replace it—plain and simple. This isn't just a promise—it's our commitment to quality, and to you.

This product comes with a Lifetime Guarantee from the date of purchase. Please use your phone to scan the QR code on the cover of this booklet to register your product or visit <https://goo.gl/i9dk3q>



Did we do alright? Please spread the love!

If you are happy with your product, tell your friends and family about us or even better leave us a review online. Spreading the word gives us the opportunity to make more people happy and keep our prices low for your next purchase.

Brooke Burdon

Founder, Nathan James