

Let's build the

Harper Dresser

SKU 71320



Scan me!

Free Lifetime
Guarantee

 **nathan james**

25-0801-VN

Ok, let's get rolling

This should be easy, just follow our instructions and you will be back to Netflix in no time.

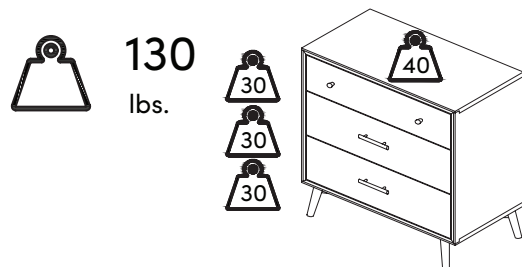
Estimated time for assembly



45:00

What you need

- Some of your favourite bubbly or your preferred relaxant
- Use the packaging carton as a working surface to prevent product damage during assembly
- Phillips head screwdriver
- Drill
- 1/4" Drill Bit
- 5/16" Drill Bit



Toll-free at 1-866-619-1004
Help@nathanjames.com
Nathanjames.com/help

What's included

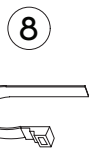
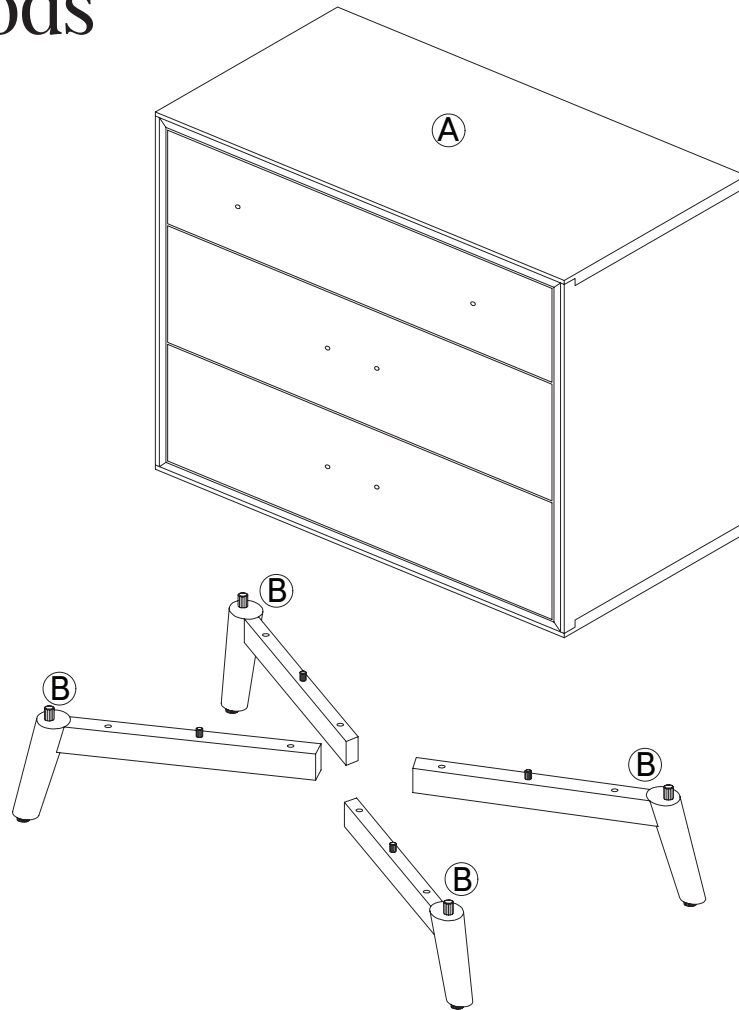
	Description	Qty
A	Cabinet Assembly	1
B	Legs	4
1	Ø1/4" x 50mm Hex Button Head Bolt	8
2	Ø1/4" x 10mm Spring Washer	8
3	Ø1/4" x 13mm Flat Washer	8
4	Allen Key	1
5	Plastic Bracket (for Anti-Tip Kit)	2
6	Non-Drywall Anchor (for Anti Tip Kit)	2
7	M3.5 x 15mm Screw (for Anti-Tip Kit)	2
8	Plastic Tether (for Anti-Tip Kit)	1
9	M4 x 50mm Screw (for Anti-Tip Kit)	2
10	Drywall Anchor (for Anti Tip Kit)	2
11	Leveler (Extra)	2

Scan me!

Free Lifetime
Guarantee



The goods



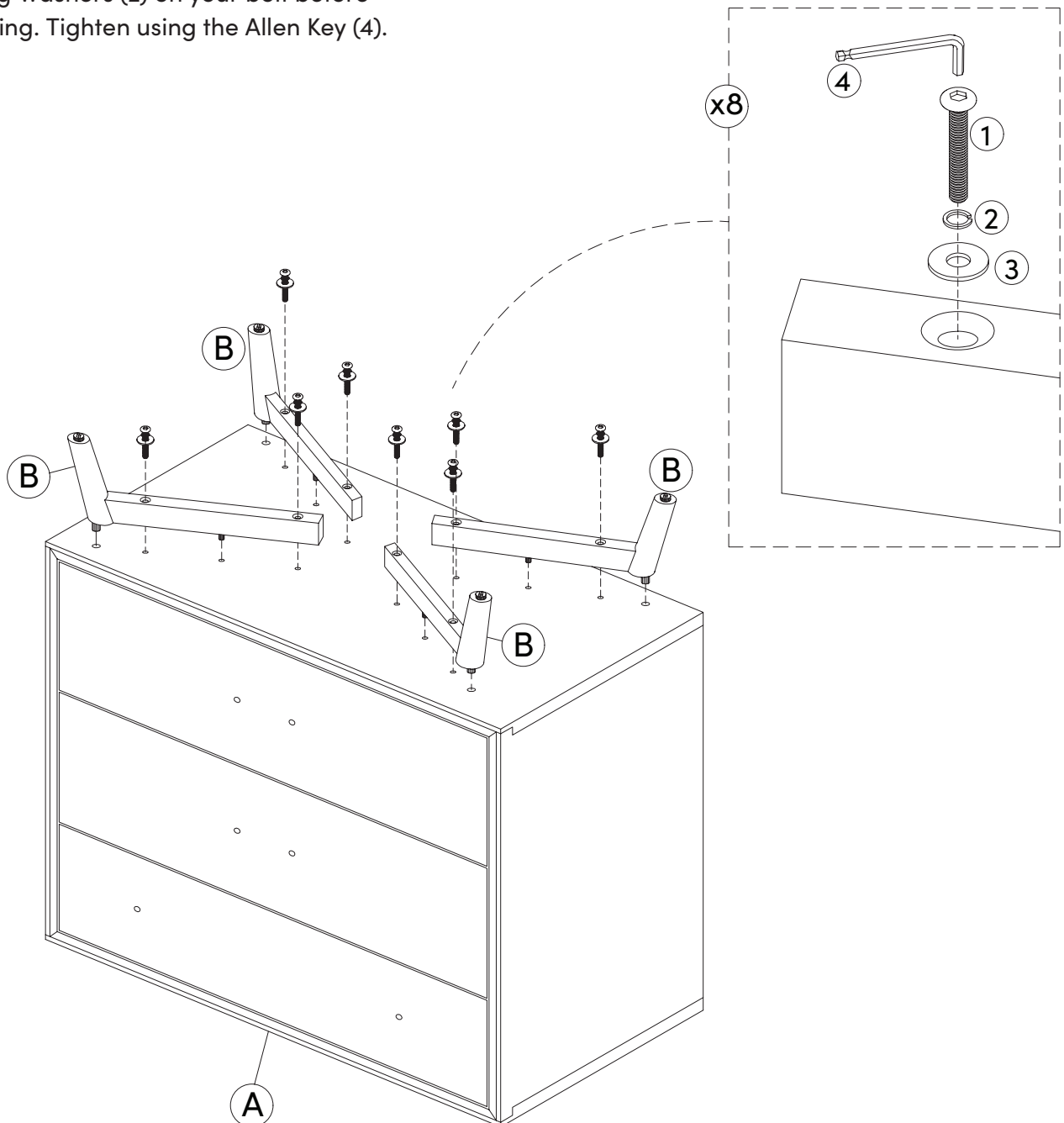
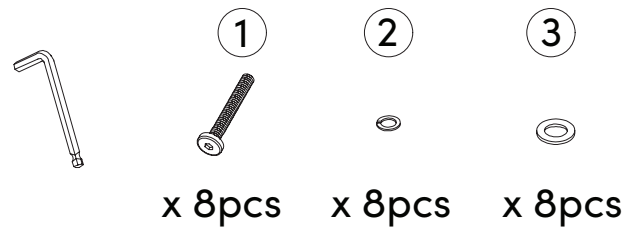
IMPORTANT

1. Do not tighten bolts / screws completely until all bolts / screws are lined up and inserted into holes.
2. Do not over tighten screws and bolts to avoid stripping.
3. Please use hand tools to assemble this product.

Step 1

Now we'll attach those legs to the dresser frame.

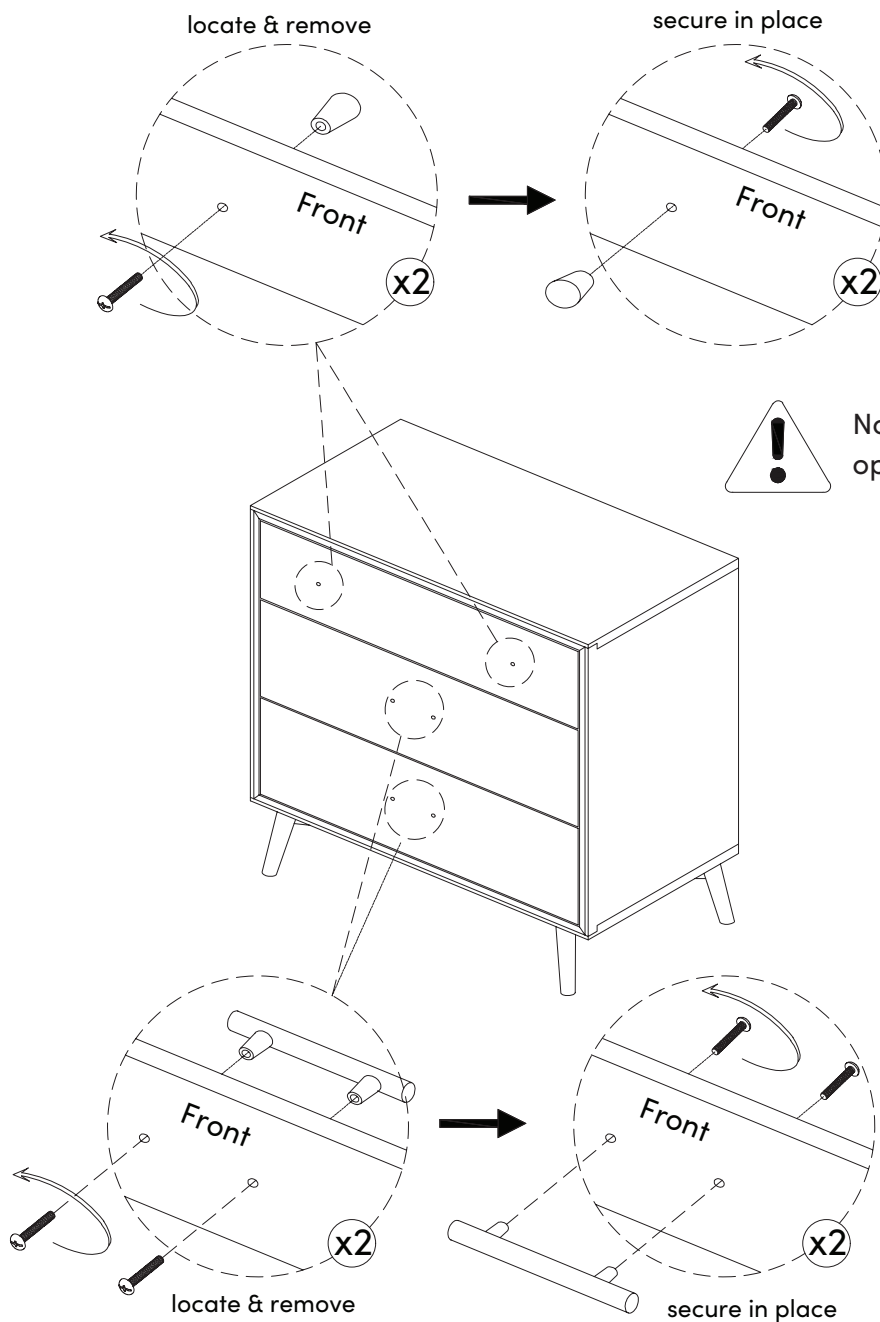
To do this, align the holes in the legs with the holes in the bottom of the dresser. Secure using the Hex Button Head Bolts (1). Be sure to use the Flat Washers (3) and Spring Washers (2) on your bolt before securing. Tighten using the Allen Key (4).



Step 2

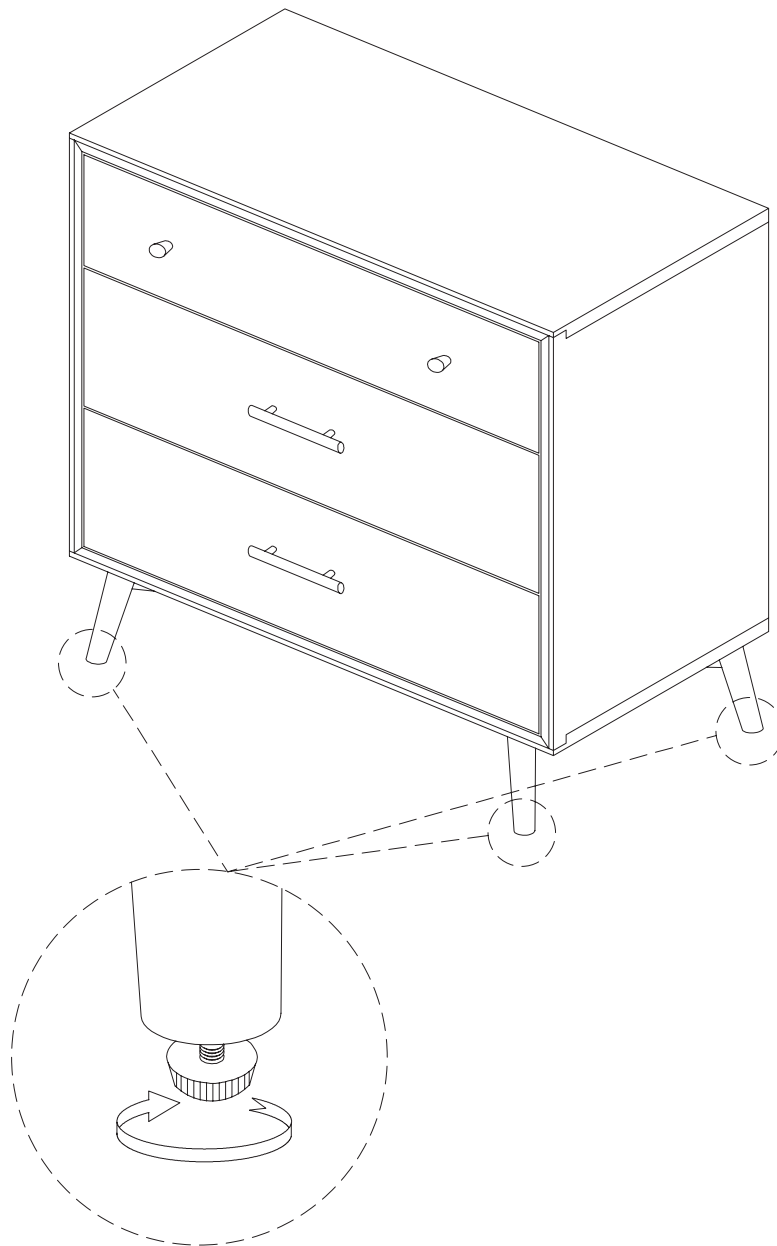
Next, pull out the drawer. Don't worry, it's easy. You'll find the handles waiting inside. Just take them out and attach them to the front of the drawer using the screws provided.

Check out the illustration to see exactly how it's done.



Step 3

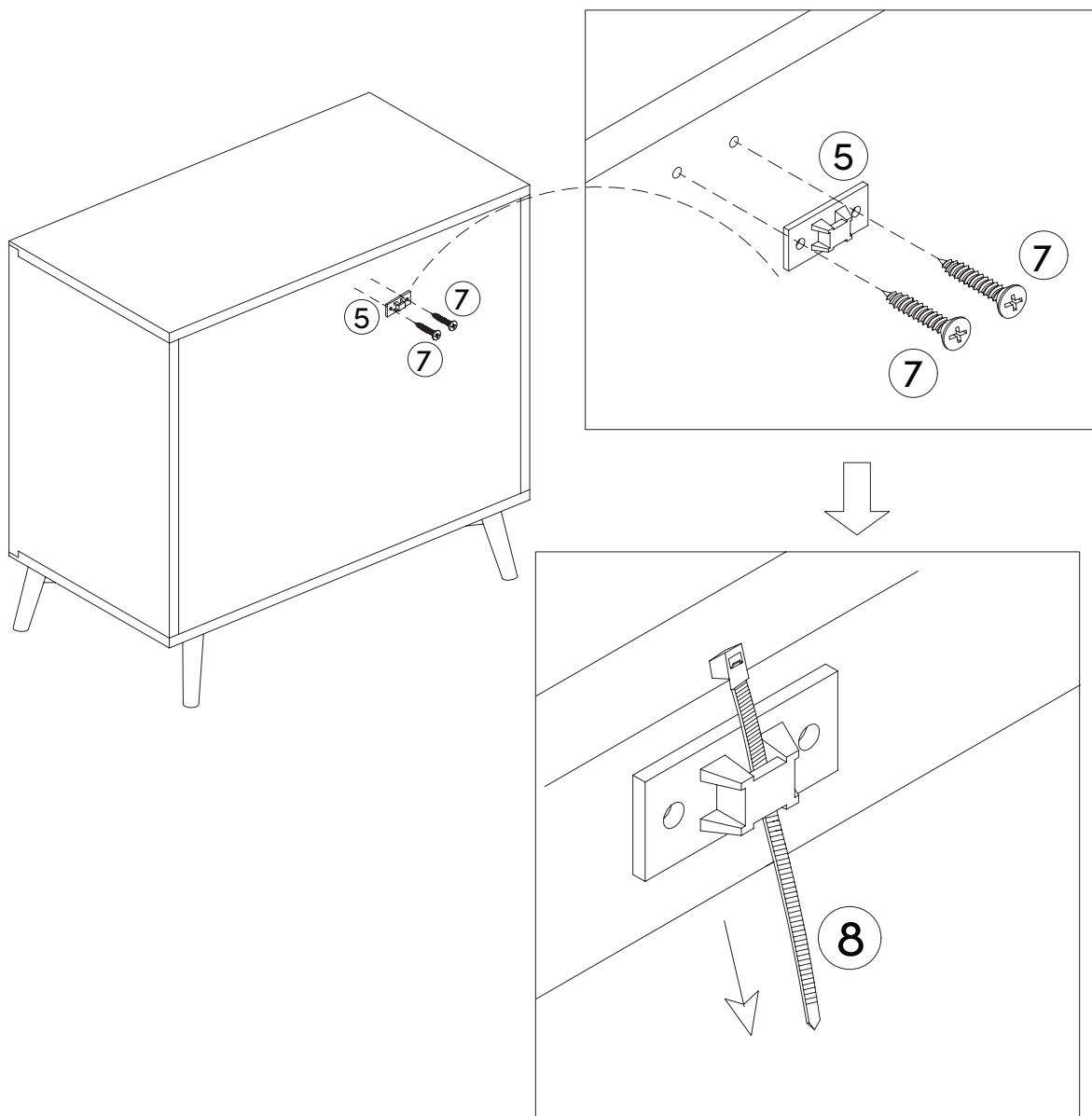
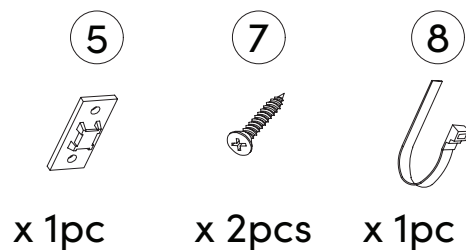
We can finally see just how beautiful this dresser really is!
Adjust the footpads to make sure it is both sturdy and stunning!



**Wobbly or unlevel?
Adjust feet until stable!**

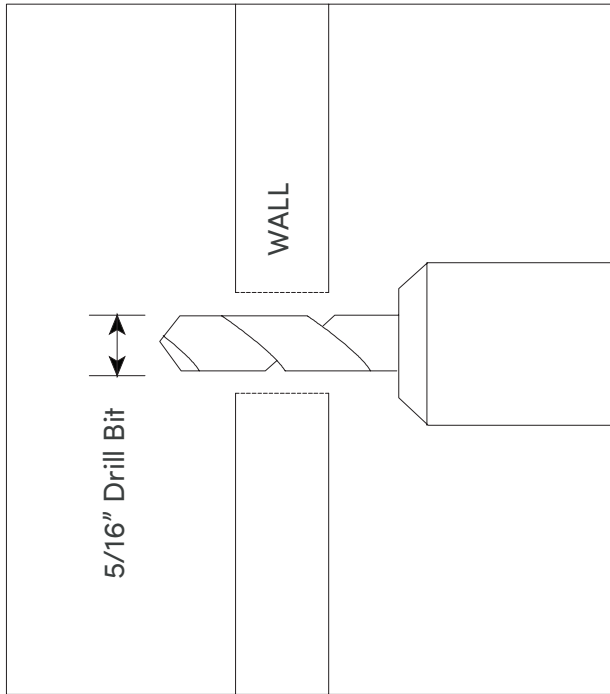
Step 4

Safety first! Secure the Plastic Bracket(for Anti-Tip Kit) (5) to the back of the unit using the M3.5*15mm Screws (7) and then feed the Plastic Tether (8) through the Bracket.

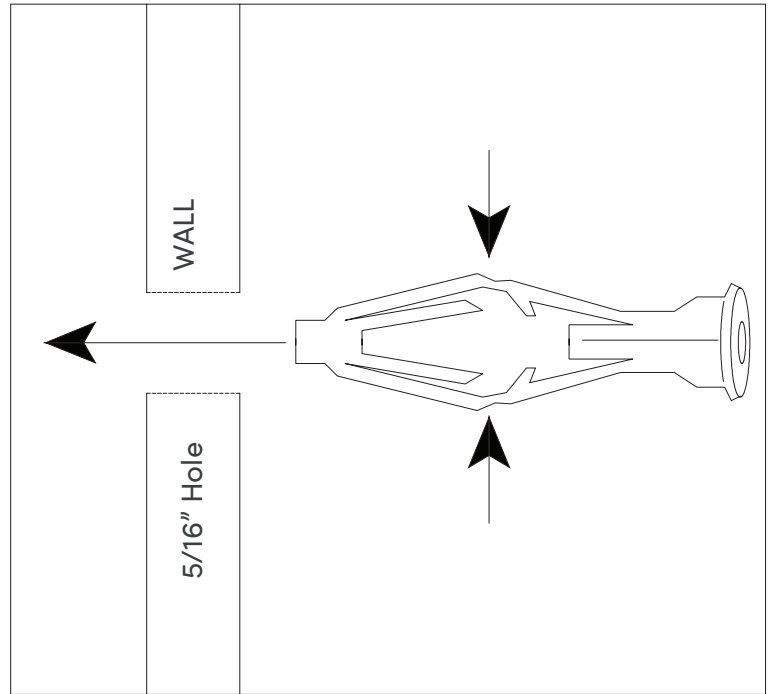


Important Note: Young children (and/or pets) can be seriously injured by tipping furniture units. You must install the provided anti-tip kit hardware, as instructed, to prevent furniture from tipping over—which could possibly lead to injuries or damage. The provided anti-tip hardware is intended only as an additional safety measure and deterrent; it is not a substitute for proper adult supervision. The provided anti-tip kit hardware is not an earthquake restraint. If you wish to add the extra security of earthquake restraints, they must be purchased and installed separately.

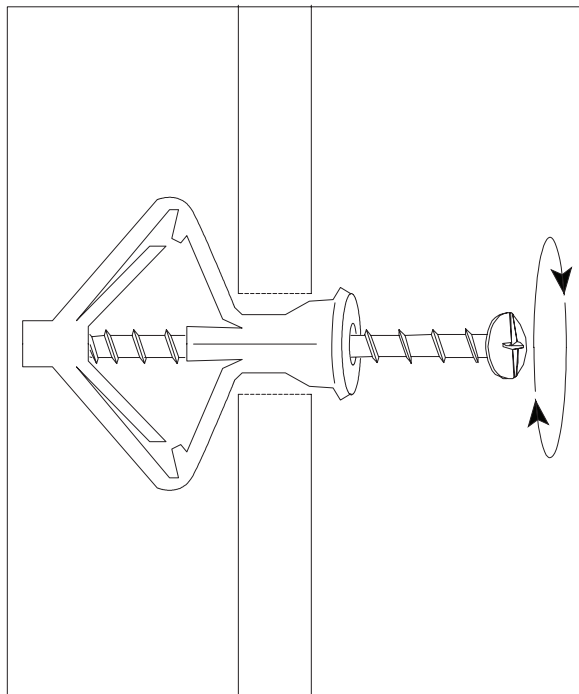
How to Use Drywall Anchors



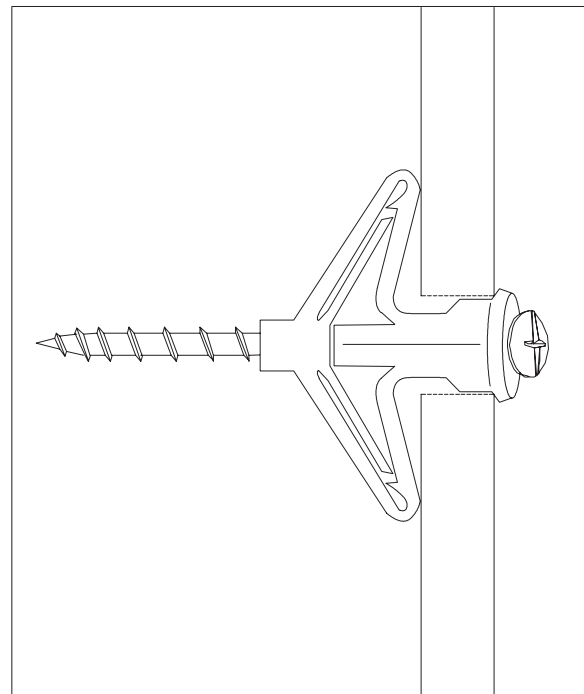
1. Drill hole with 5/16" bit.



2. Pinch and insert.



3. Begin tightening.



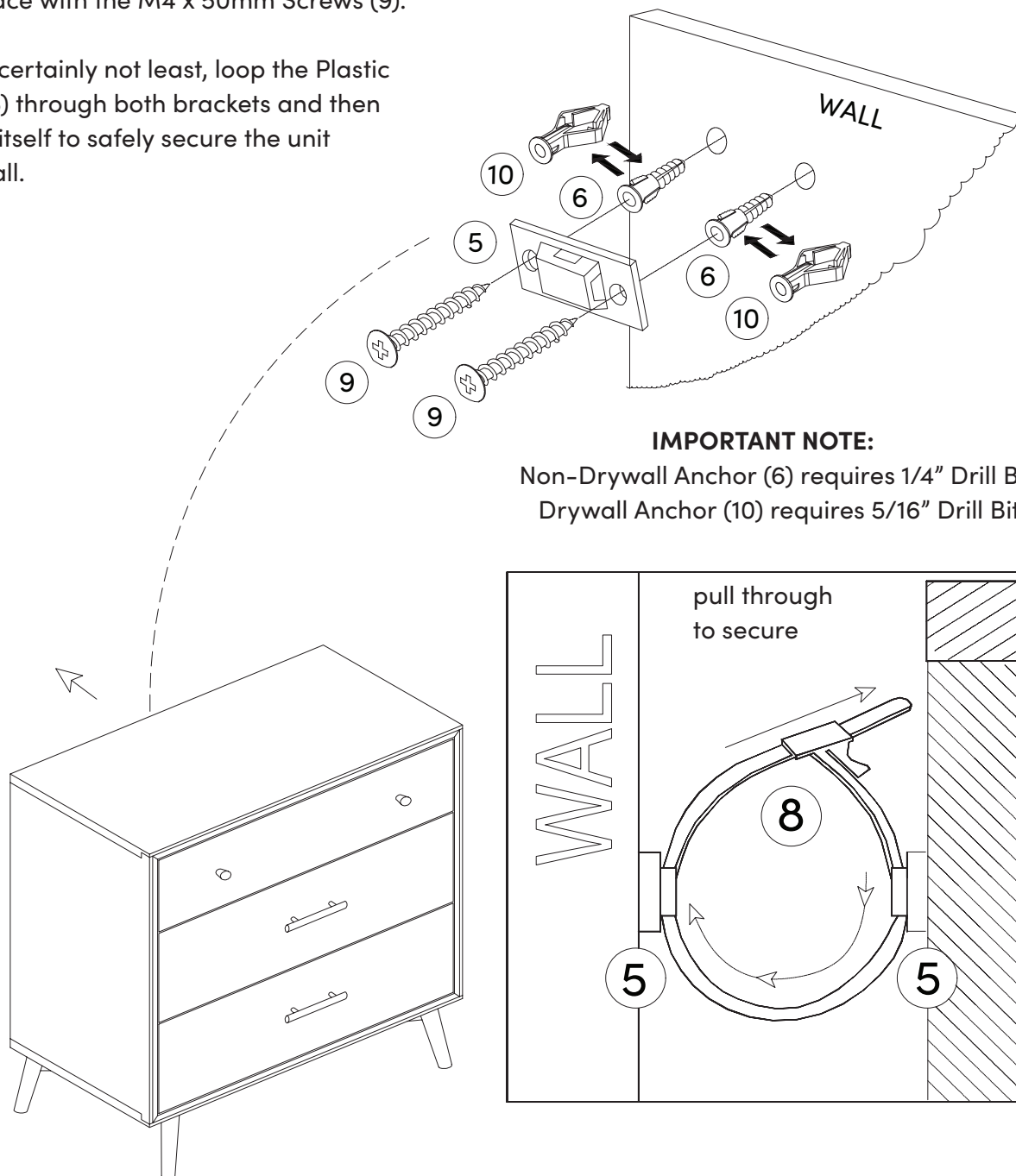
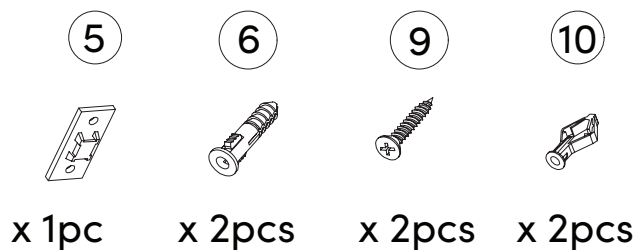
4. Anchor is secure when screw is tightened to 100%.

Step 5

Find where you want your dresser to live and then you will mount the Plastic Bracket (5) to the wall using the proper wall anchors - (6) or (10) - and the M4 x 50mm Screws (9).

First, using the bracket as a hole guide, drill 2 proper sized holes in the wall. Then, secure the Plastic Bracket to the wall by screwing it into place with the M4 x 50mm Screws (9).

Last but certainly not least, loop the Plastic Tether (8) through both brackets and then through itself to safely secure the unit to the wall.



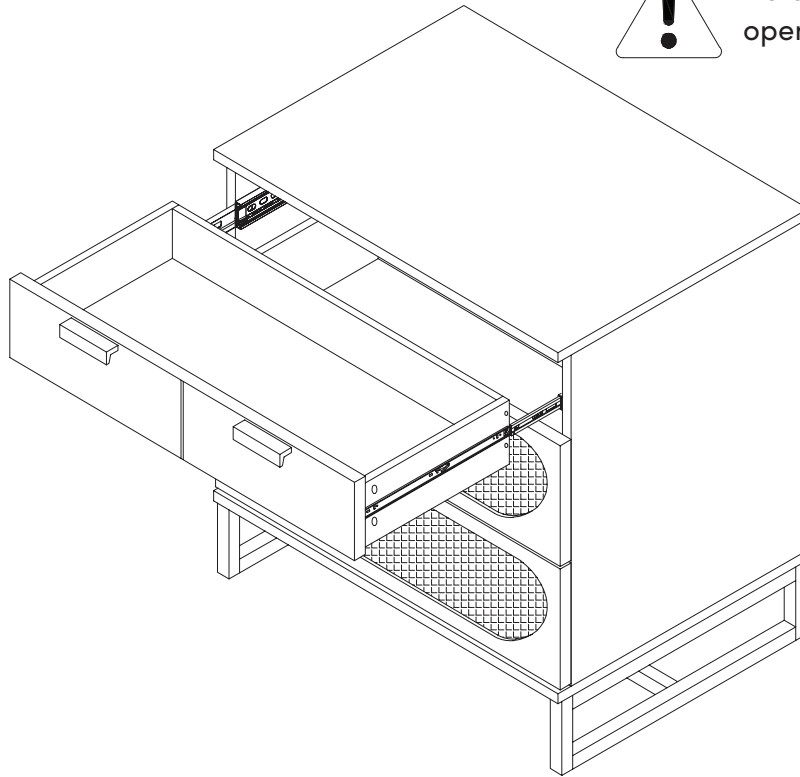
IMPORTANT NOTE:

Non-Drywall Anchor (6) requires 1/4" Drill Bit
Drywall Anchor (10) requires 5/16" Drill Bit

How to Use Drywall Anchors

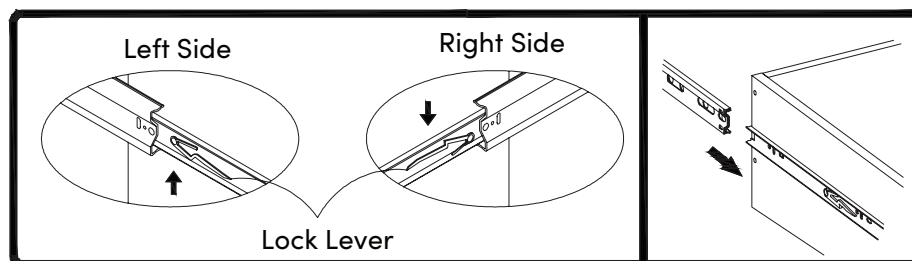


Note: Only one drawer can be opened at a time.



To remove drawer, if needed:

- Pull the drawer fully open so levers are visible
- Push up on left side lever and down on right side lever
- Holding levers in place, pull drawer towards you



Warning: Risk of injury to persons - do not place a television on this furniture. This furniture is not approved for use with a television.

No heartburn, when we handle the return

Give us a call **1-866-619-1004** or shoot us a message
at **help@nathanjames.com** we will issue you a free
replacement with **zero hassle**.

Our way



Give us a call



Replacement



You

Their way



Re-package item



Schedule pick up



Track package



Replacement



You

We really don't want you to go through the hassle of re-packaging your item
and sending it back, because let's be honest...nobody has time for that.

Safety first, fun later

We want your product to last as long as possible, so we recommend that you tighten the screws 2 weeks after assembly and for added safety check the tightness of all screws every 2 months.

For proper care and treatment, please check our website at **NathanJames.com/products**

Safe use of this product starts with you.

Use this product responsibly with the primary concern for your safety. Follow assembly instructions carefully and inspect product upon receipt and each use.

Nathan James and its parent companies cannot be held legally responsible for any injuries or death resulted from failure to follow instructions or improper use of this product.

Do not modify the structure of this product in any way.

Our products have been tested to meet specific safety measures as they were originally intended to be sold. Any modifications will present the risk of creating significant safety issues which NJ will not be responsible for.

Proper use

- | | |
|---------------|-------------------------------------|
| DO NOT | use for commercial purposes |
| DO NOT | climb on dresser |
| DO NOT | exceed weight limit |
| DO NOT | leave spilled liquid on dresser |
| DO NOT | use if dresser is damaged or broken |
| DO NOT | make temporary repairs |
| DO NOT | use outdoors |

We are only in business if you're happy

For starters, thanks for being you.

☎ Toll-free at 1-866-619-1004

✉ Help@nathanjames.com

🌐 NathanJames.com/help

We do our best to ensure your furniture arrives without any problems, but occasionally mistakes happen—as humans we are imperfect beings. In the event that a part is damaged or missing, we will be more than happy to provide you with replacement part(s) for free.

Lifetime Guarantee

We believe in making things that last. That's why every product is backed by our Lifetime Guarantee. No hidden clauses. No runaround. If it breaks, we'll replace it—plain and simple. This isn't just a promise—it's our commitment to quality, and to you.

This product comes with a Lifetime Guarantee from the date of purchase. Please use your phone to scan the QR code on the cover of this booklet to register your product or visit <https://goo.gl/i9dk3q>



Did we do alright? Please spread the love!

If you are happy with your product, tell your friends and family about us or even better leave us a review online. Spreading the word gives us the opportunity to make more people happy and keep our prices low for your next purchase.

Brooke Burdon

Founder, Nathan James