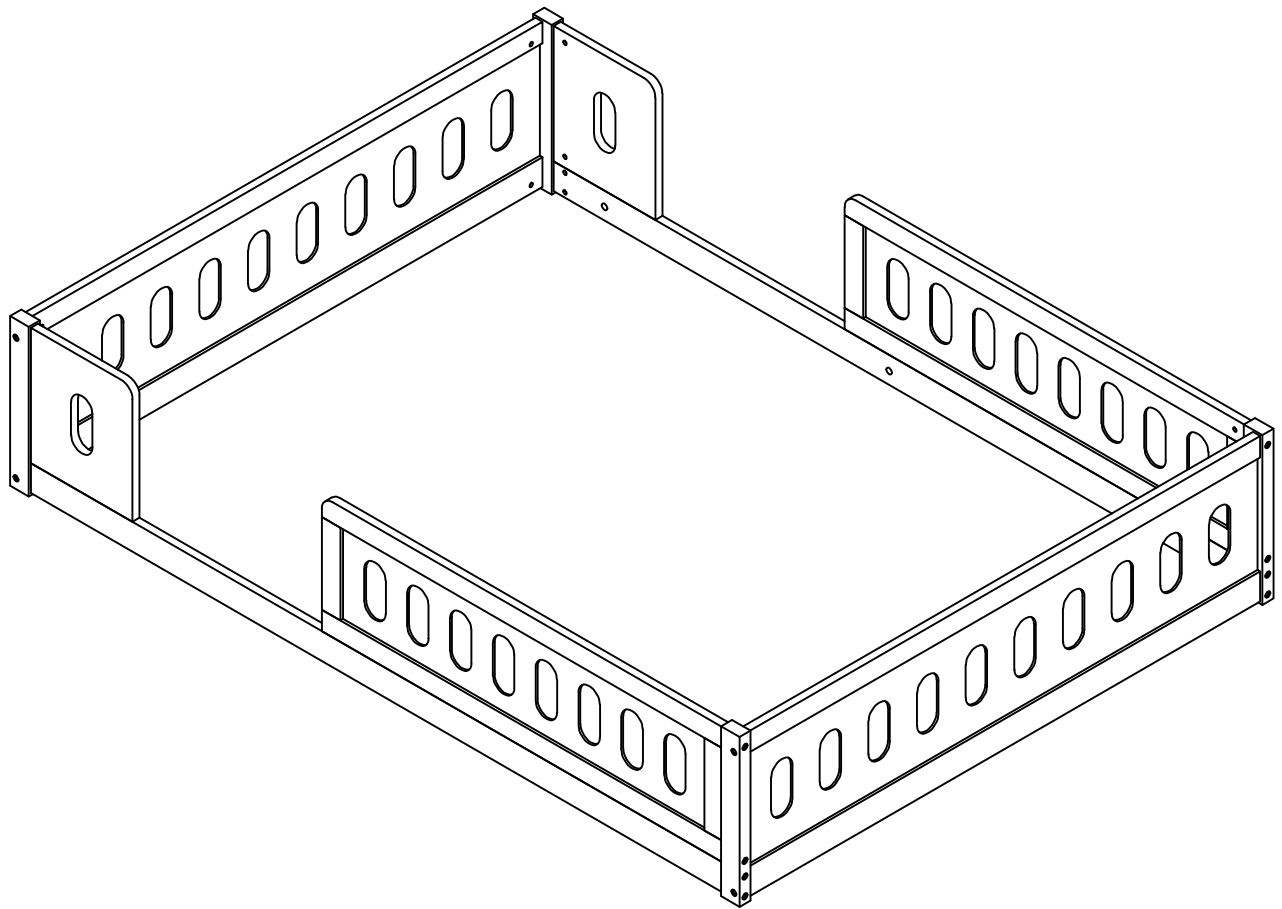


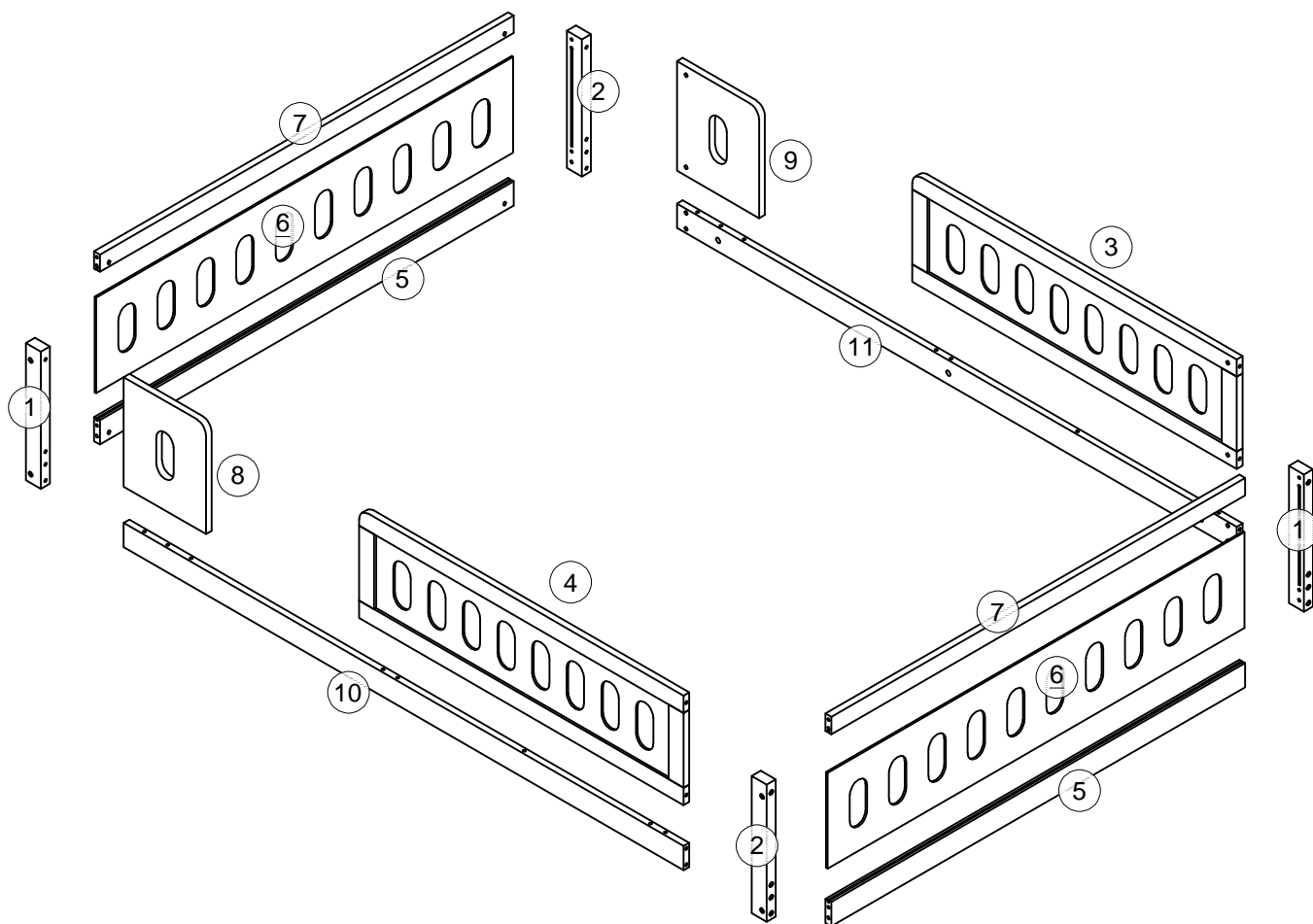
# ASSEMBLY INSTRUCTIONS

## INSTRUCTIONS D'ASSEMBLAGE

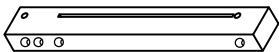

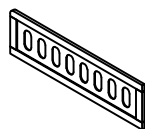
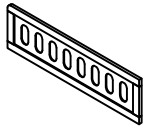

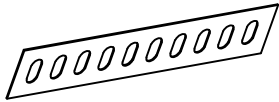
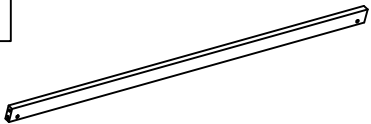



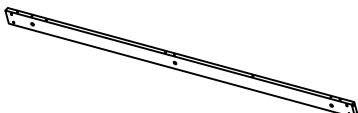


**N709P321458**




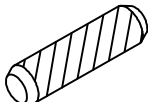

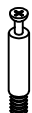
# Detail view - Vue détaillée



# Part List - Liste des pièces: N709P321458

|   |   |   |  |   |   |
|---|---|---|--|---|---|
| 1   |  | 2   |   | 3   |  |
| Left Legs/ La jambe gauche<br>- 2pcs/pièces                         |   | Right legs/ Jambes droites<br>- 2pcs/pièces                         |  | Front Panel/ panneau avant<br>- 1pc/pièce |   |
| 4   |  | 5   |   | 6   |  |
| Behind Panel/ Derrière le panneau<br>- 1pc/pièce                    |   | Upper Horizontal Bar/ Barre<br>horizontale supérieure - 2pcs/pièces |  | Panel/ Panneau<br>- 2pcs/pièces           |   |
| 7   |  | 8   |   | 9   |  |
| Lower Horizontal Bar/ Barre<br>horizontale inférieure - 2pcs/pièces |   | Behind Bar/Derrièrebar -<br>1pc/pièce                               |  | Front Bar/ Barre avant<br>- 1pc/pièce     |   |
| 10  |  | 11  |  |   |   |
| Behind Shoulder Bed/ Derrière<br>le lit d'épaule - 1pc/pièce        |   | Front Shoulder Bed/ Lit d'épaule<br>avant - 1pc/pièce               |  |   |   |

# Part List - Liste des pièces: N709P321458

|   |   |                                   |   |   |   |
|---|---|-----------------------------------|---|---|---|
| A   |  | B                                 |  | C   |  |
| Ø1/4"*90mm                                    |   | Ø1/4"*65mm                        |   | Ø1/4"x9.5x12mm                            |   |
| Bolt/Boulon (16pcs/pièces)                    |   | Bolt/Boulon (8pcs/pièces)         |   | Bolt/Boulon(24pcs/pièces)                 |   |
| D   |  | E                                 |  | F   |  |
| Ø8*30mm                                       |   | K4mm                              |   |   |   |
| Wood dowel/Cheville en bois<br>(18pcs/pièces) |   | Allen key/Clé Allen (1pcs/pièces) |   | Cam locks/ Serrus à<br>came (6pcs/pièces) | Cam locks/ Serrus à<br>came (6pcs/pièces)   |

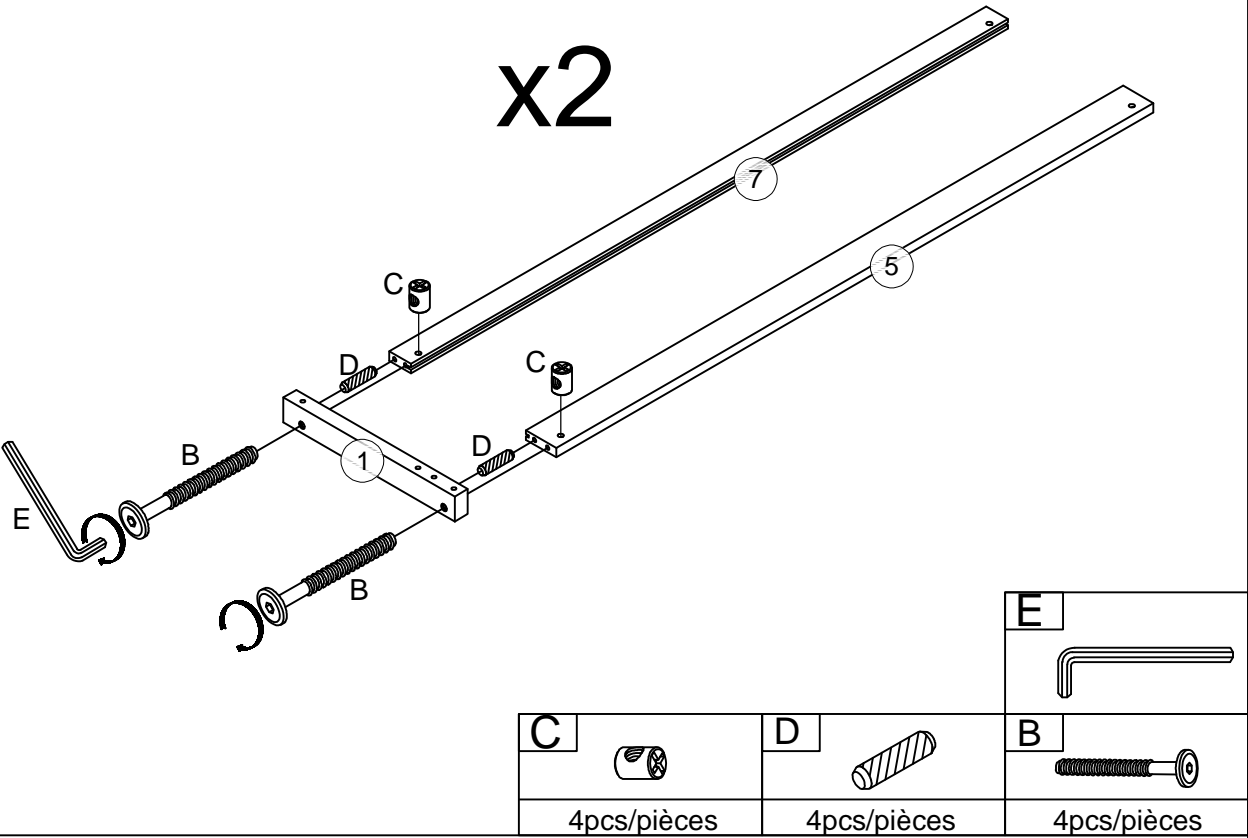
## ASSEMBLY TOOLS REQUIRED ( NOT INCLUDED )



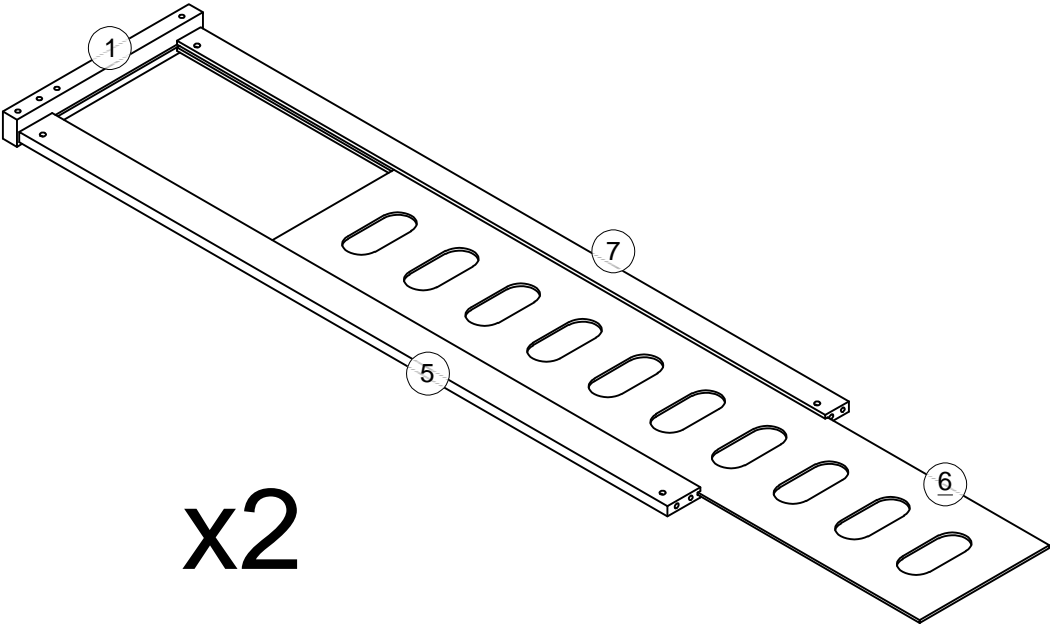
PLEASE BE CAREFUL DO NOT DAMAGE THE HOLE  
POSITION WHEN YOU USE POWER TOOLS !

ATTENTION À NE PAS ENDOMMAGER LA POSITION DU TROU  
LORSQUE VOUS UTILISEZ DES OUTILS ÉLECTRIQUES !

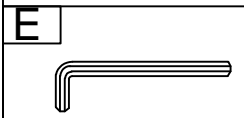
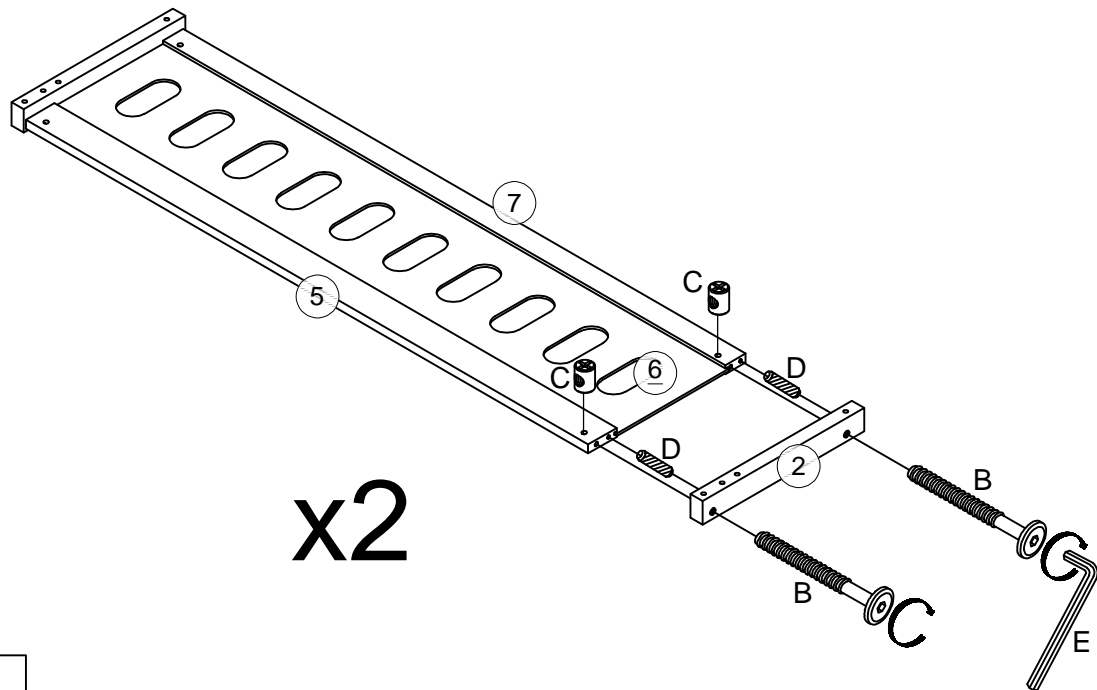
Step/Étape 1



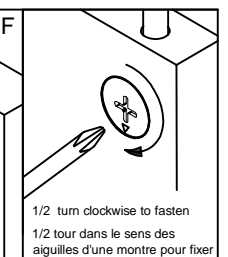
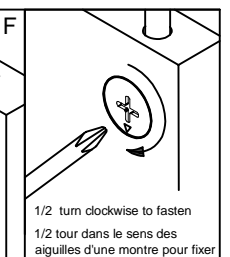
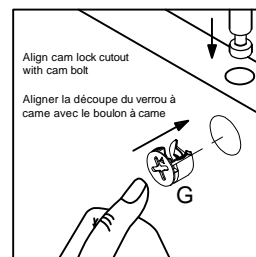
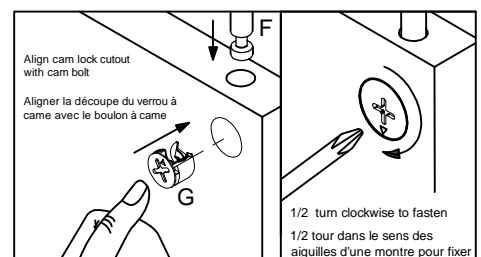
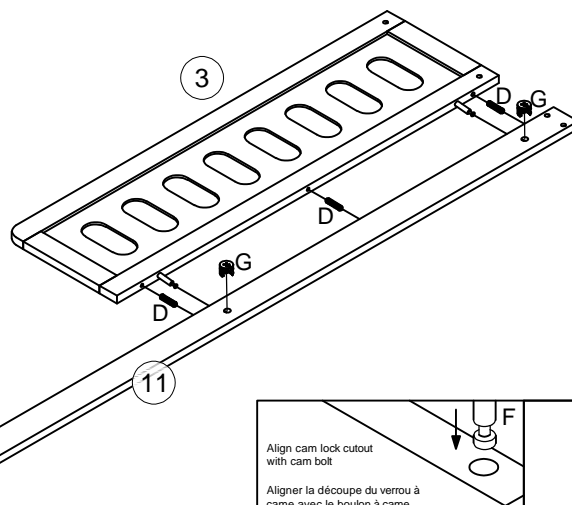
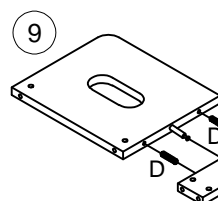
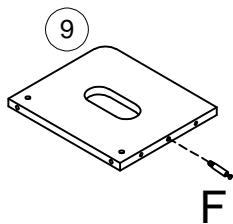
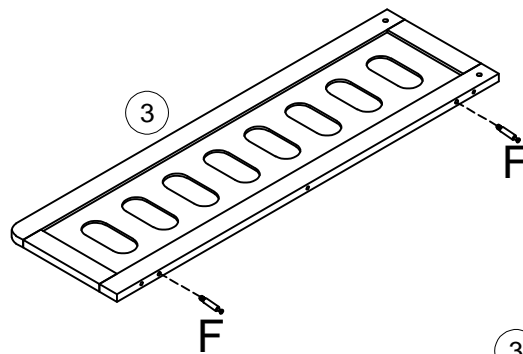
Step/Étape 2



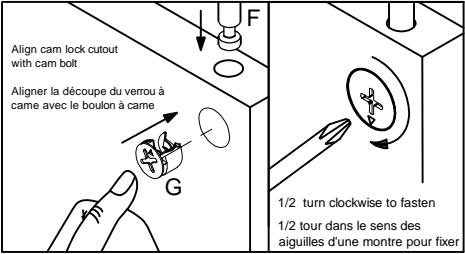
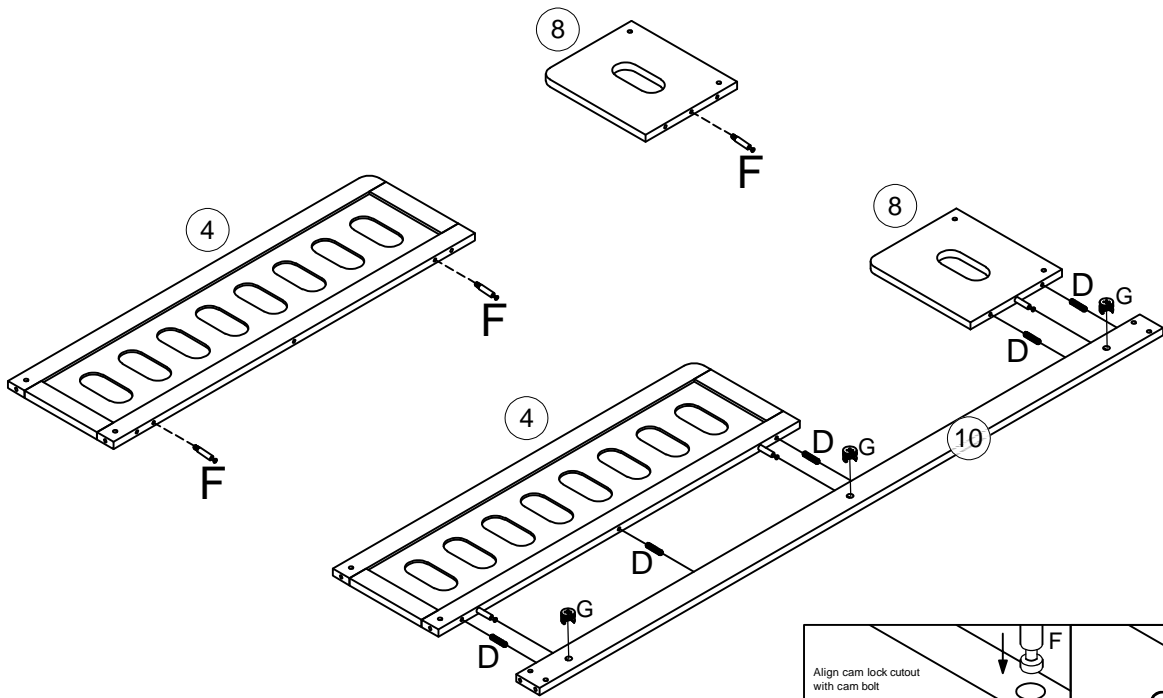
### Step/Étape 3



## Step/Étape 4

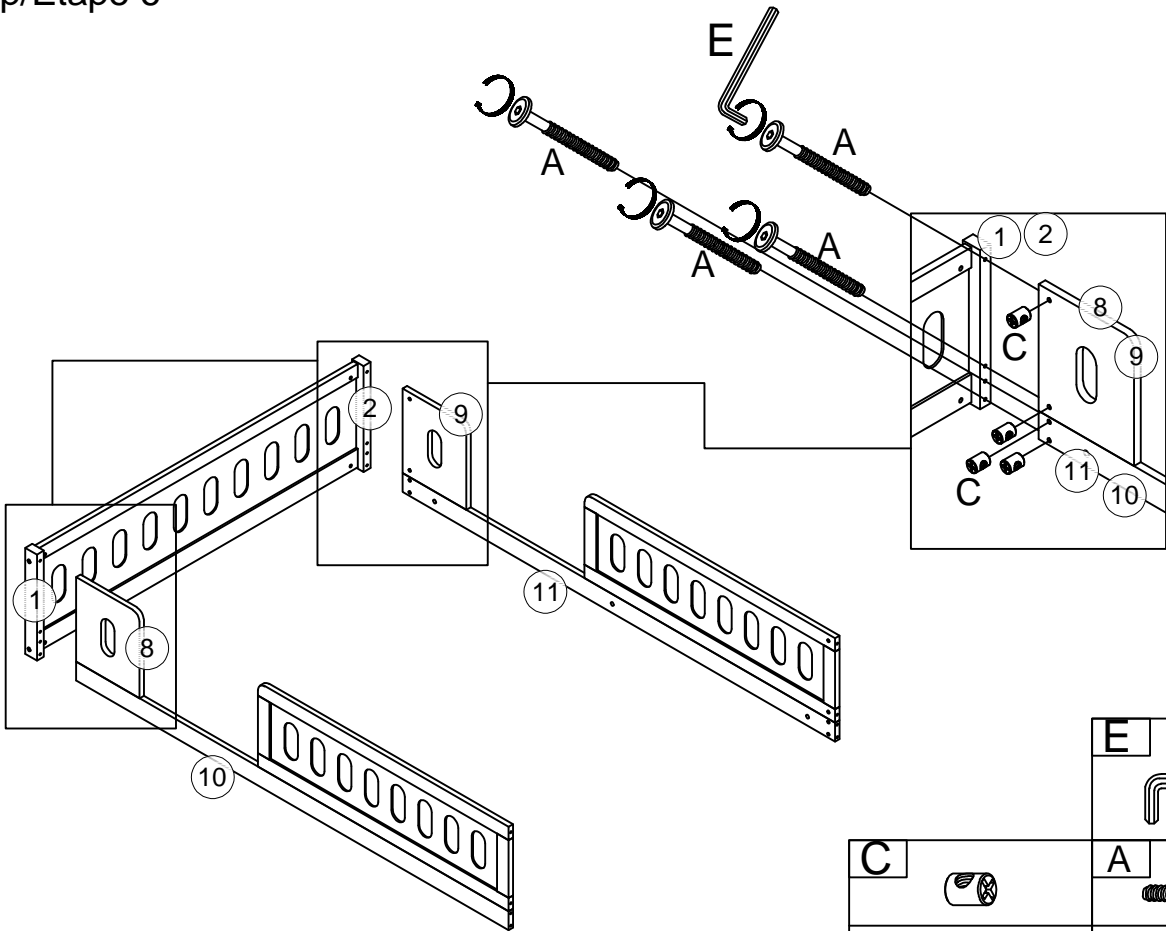


Step/Étape 5



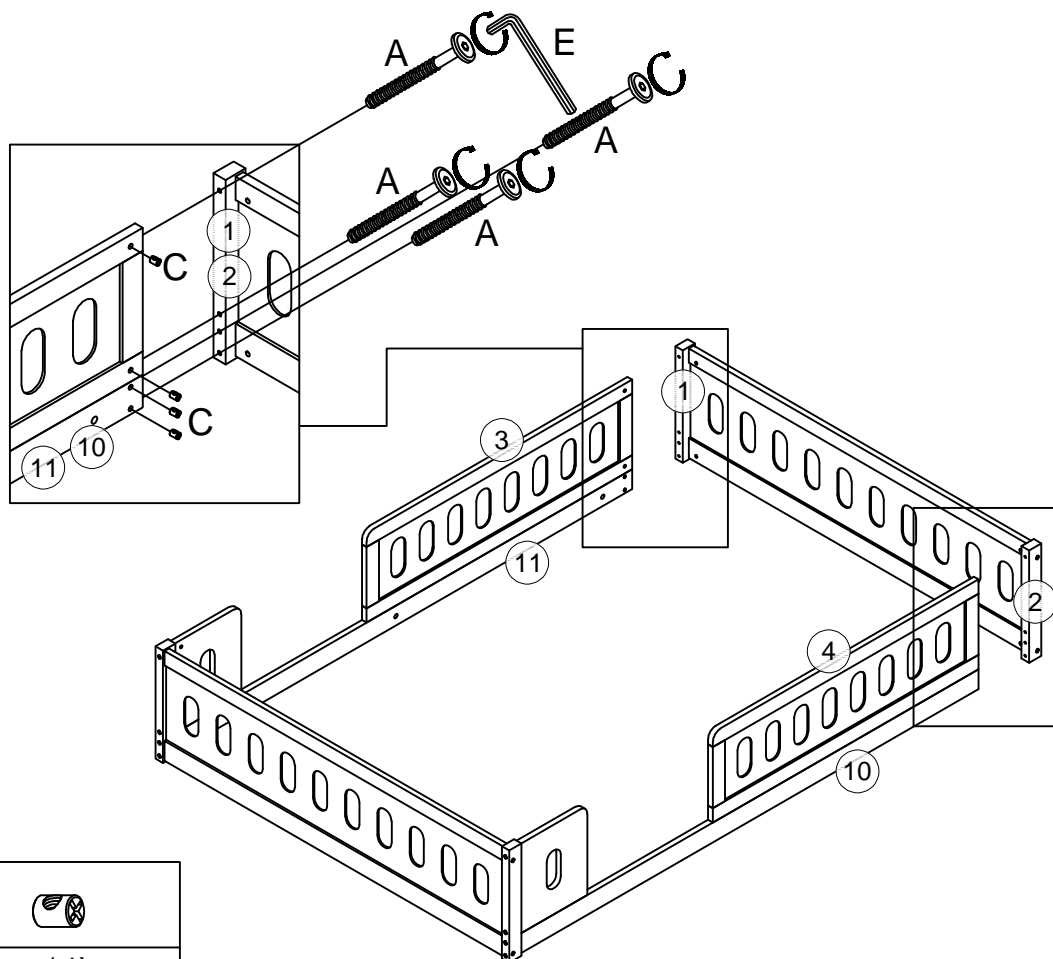
|             |             |             |
|-------------|-------------|-------------|
| F           | G           | D           |
|             |             |             |
| 3pcs/pièces | 3pcs/pièces | 5pcs/pièces |



Step/Étape 6



|             |             |
|-------------|-------------|
| E           | A           |
|             |             |
| 8pcs/pièces | 8pcs/pièces |

## Step/Étape 7



|             |   |             |
|-------------|---|-------------|
| <b>E</b>    |    |             |
| <b>A</b>    |  | <b>C</b>    |
| 8pcs/pièces |   | 8pcs/pièces |

# COMPLETED - COMPLÉTÉ

