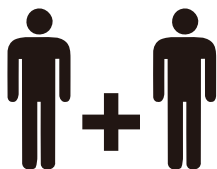


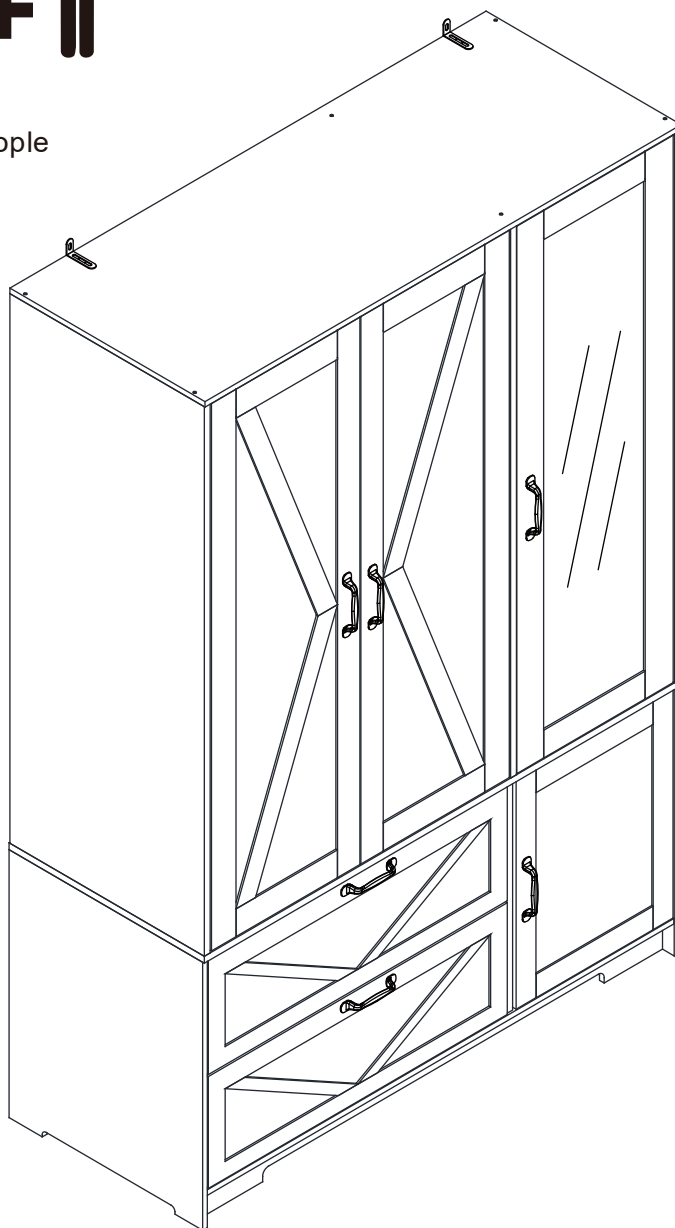
DJYC2429

ASSEMBLY INTRODUCTION

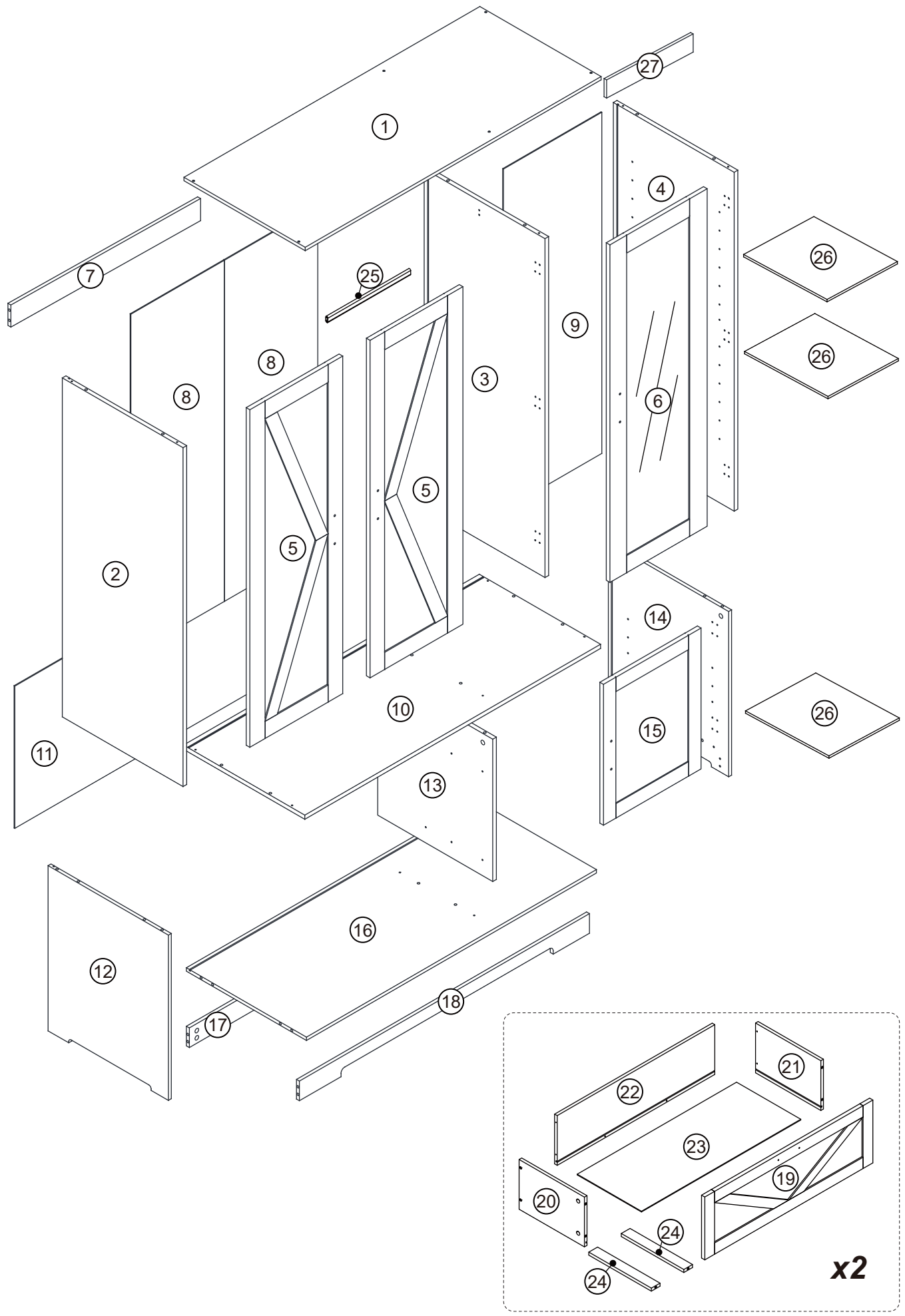
Needed for Assembly:



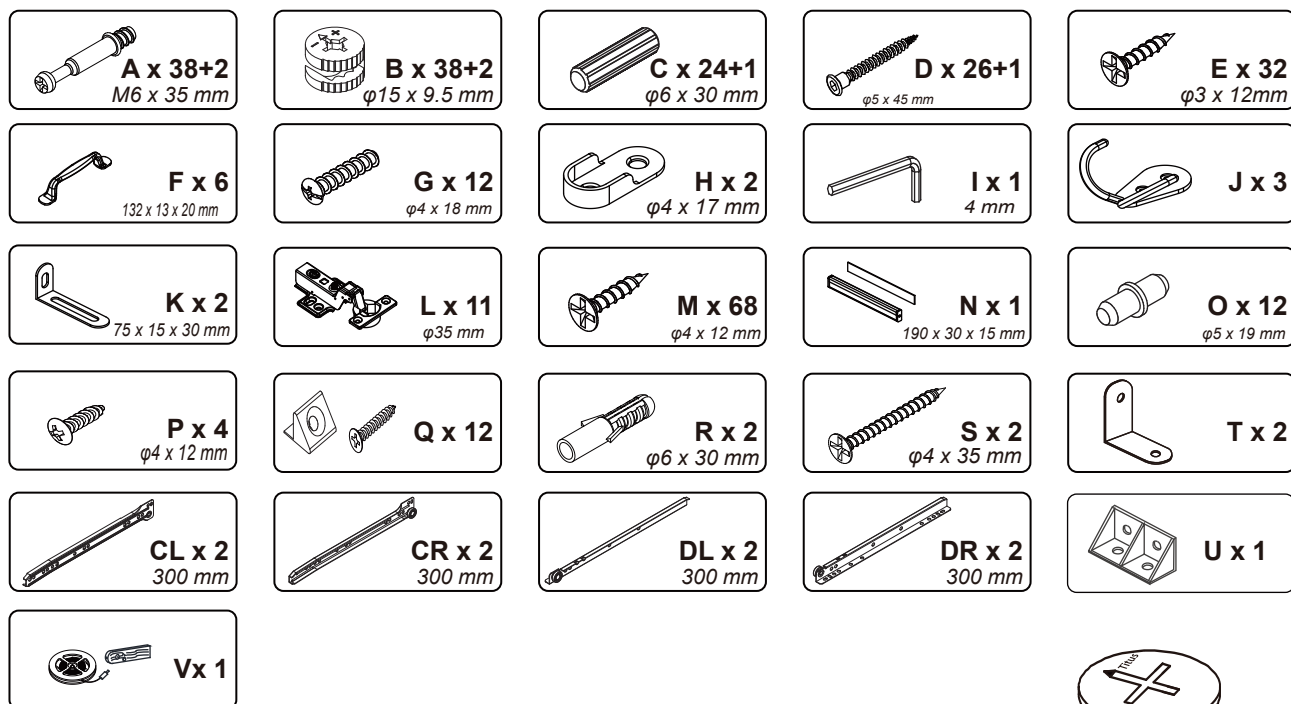
2 People



Exploded View



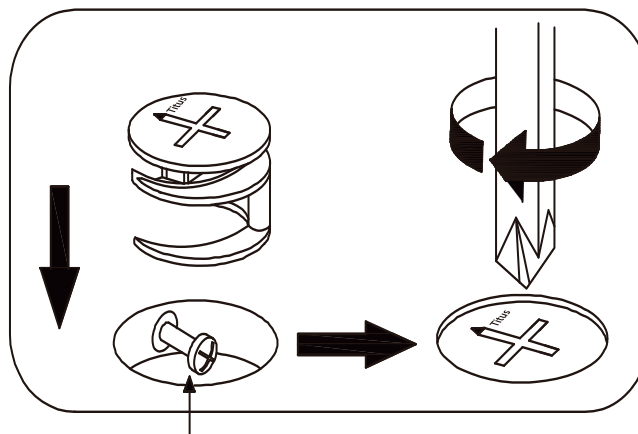
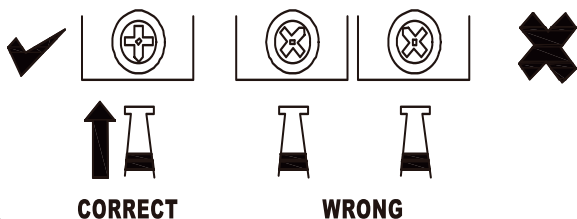
Fittings



CAM-LOCK



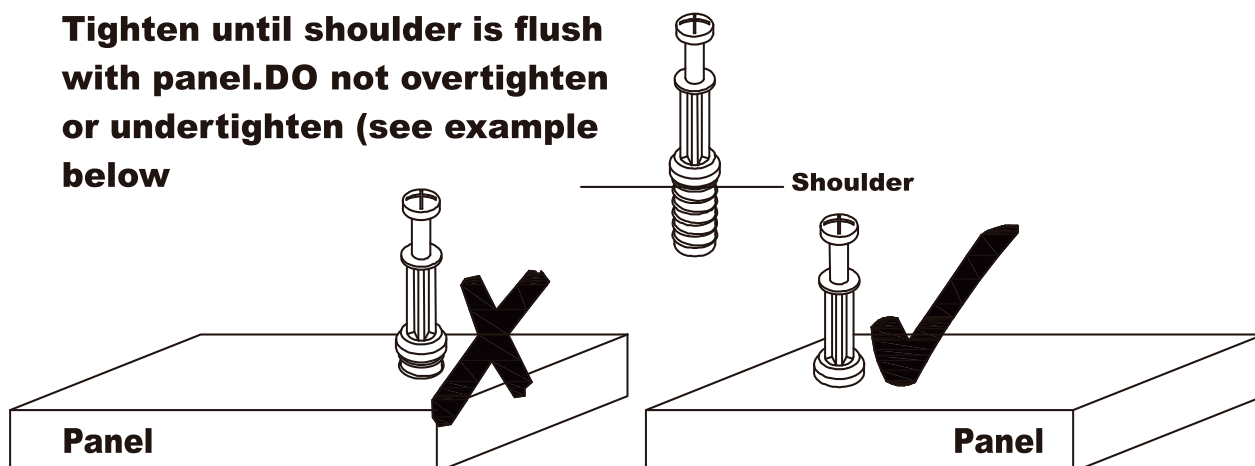
**WHEN FITTING CAMLOCK
ENSURE STARTING POSITION IS CORRECT
BEFORE YOU INSERT CONNECTING QUICKFIT
TURN CLOCKWISE UNTIL SECURE**



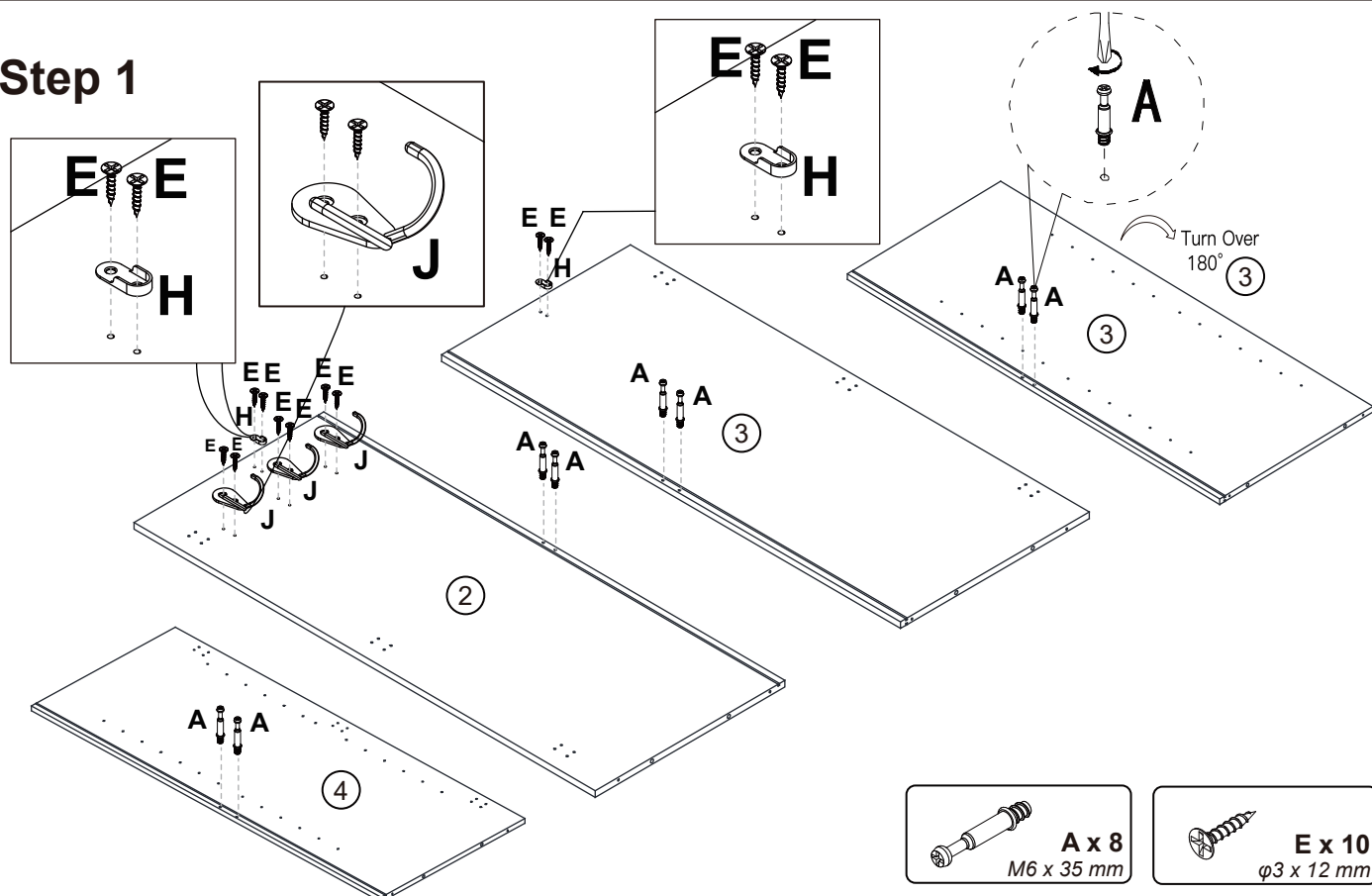
Quickfit head needs to be in centre

QUICKFIT

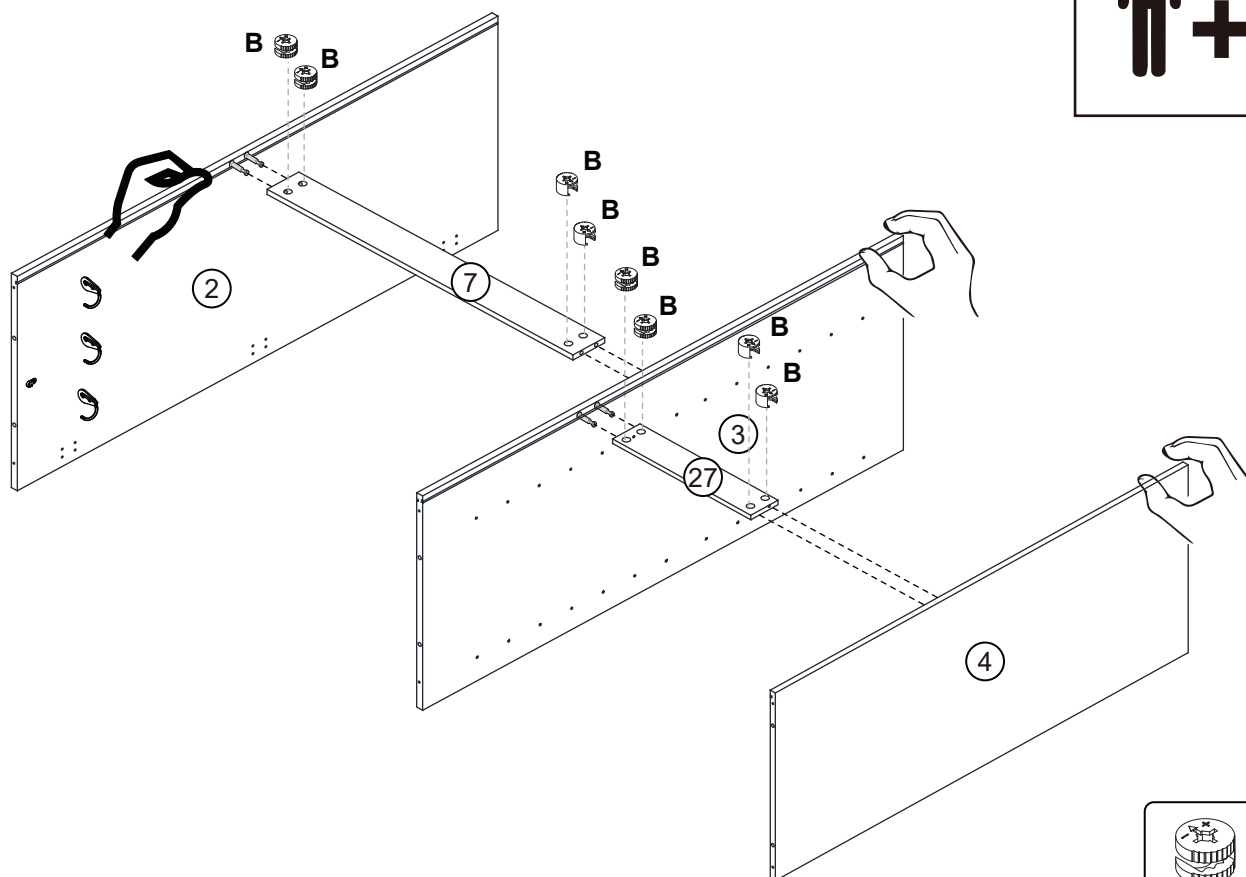
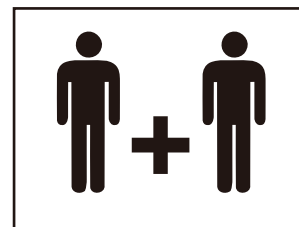
**Tighten until shoulder is flush
with panel. DO not overtighten
or undertighten (see example
below)**



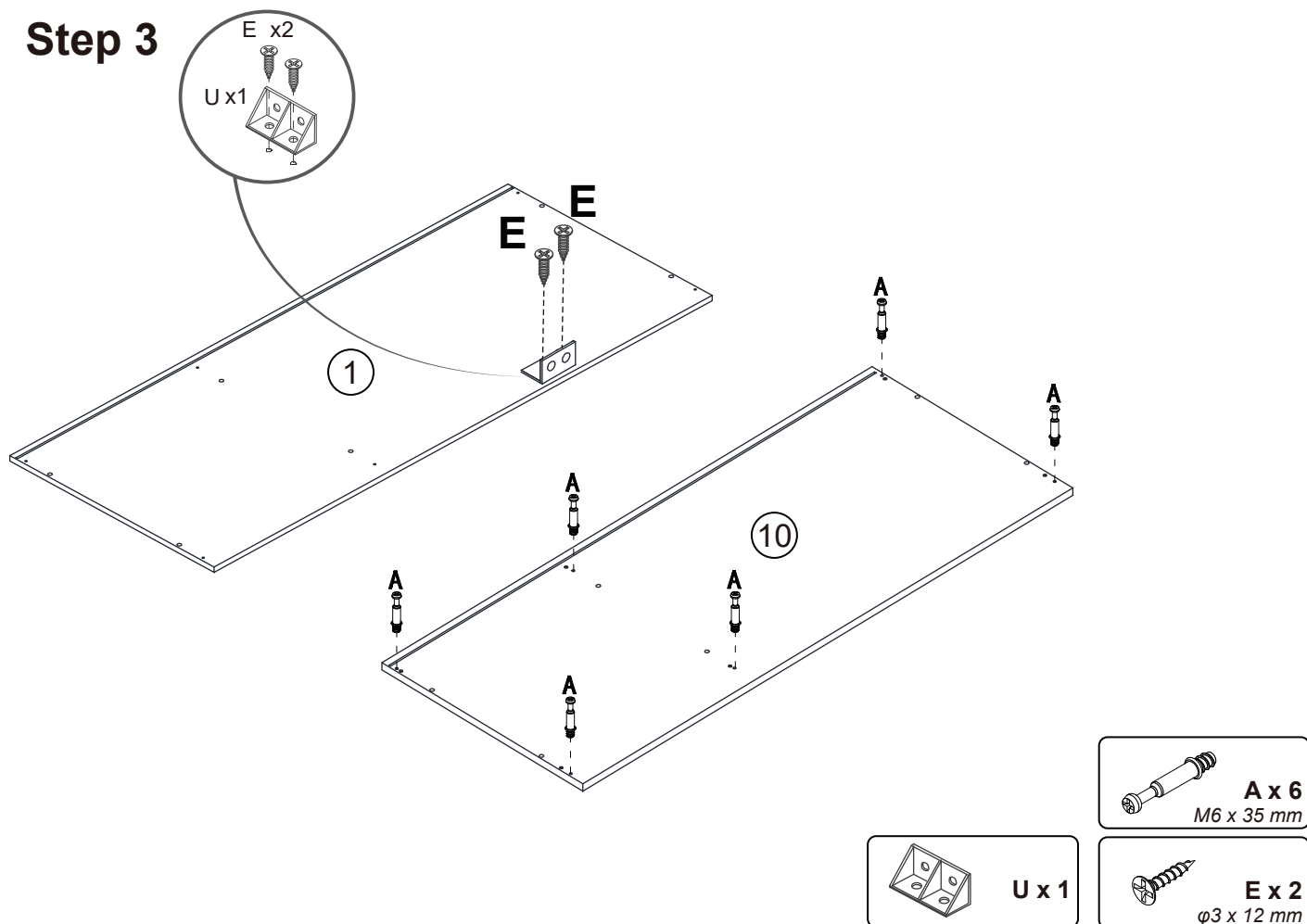
Step 1



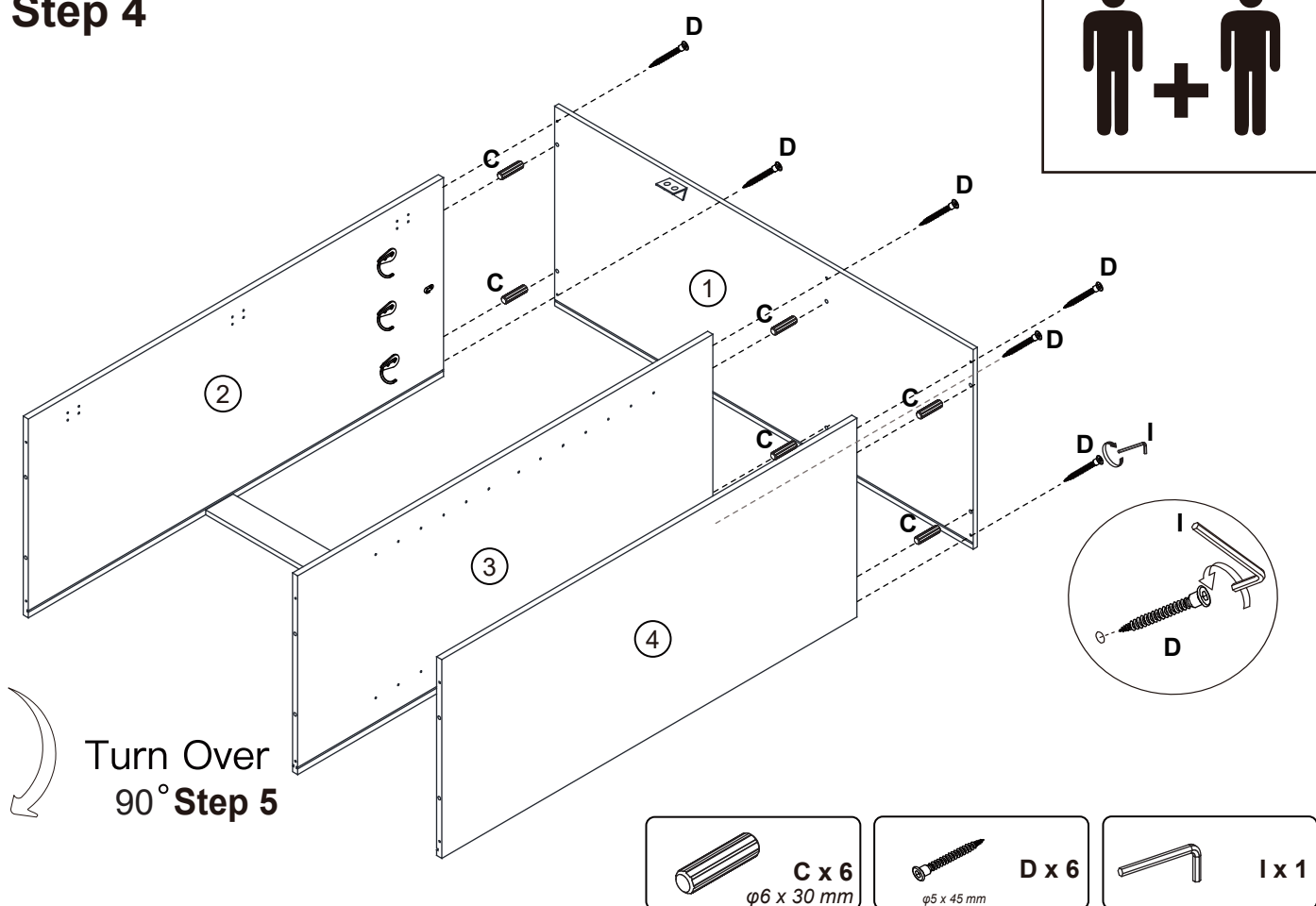
Step 2



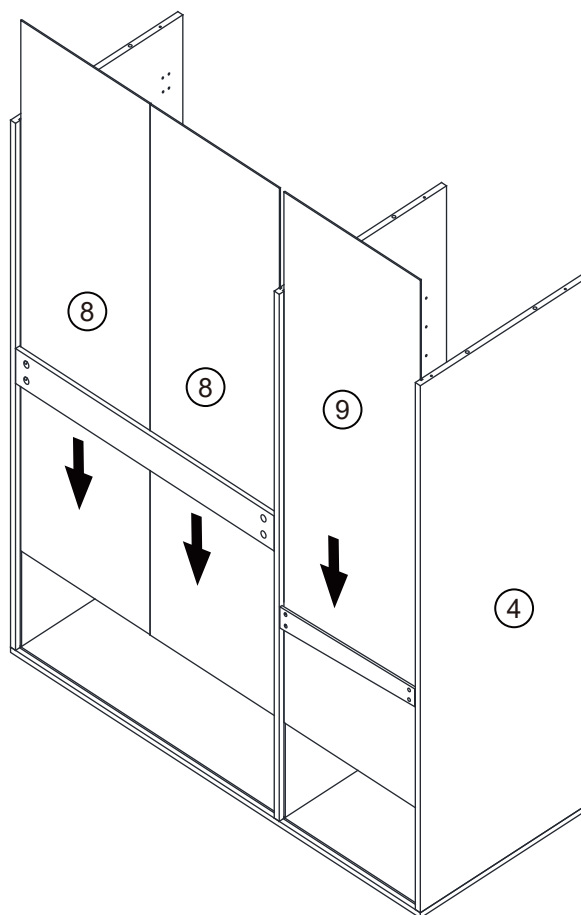
Step 3



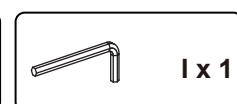
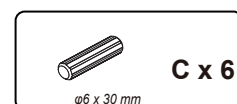
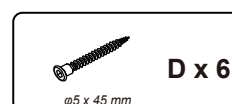
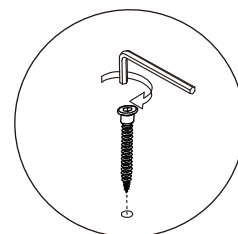
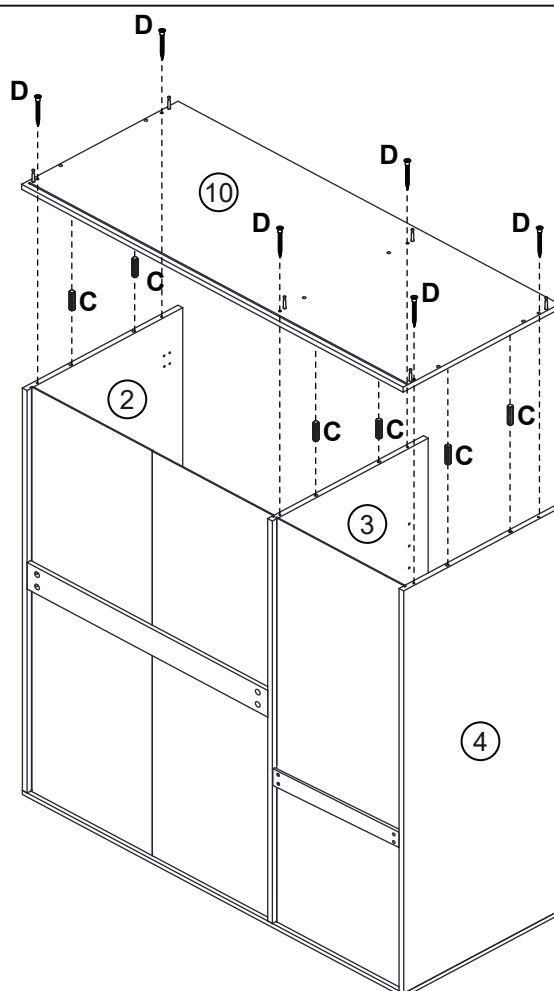
Step 4



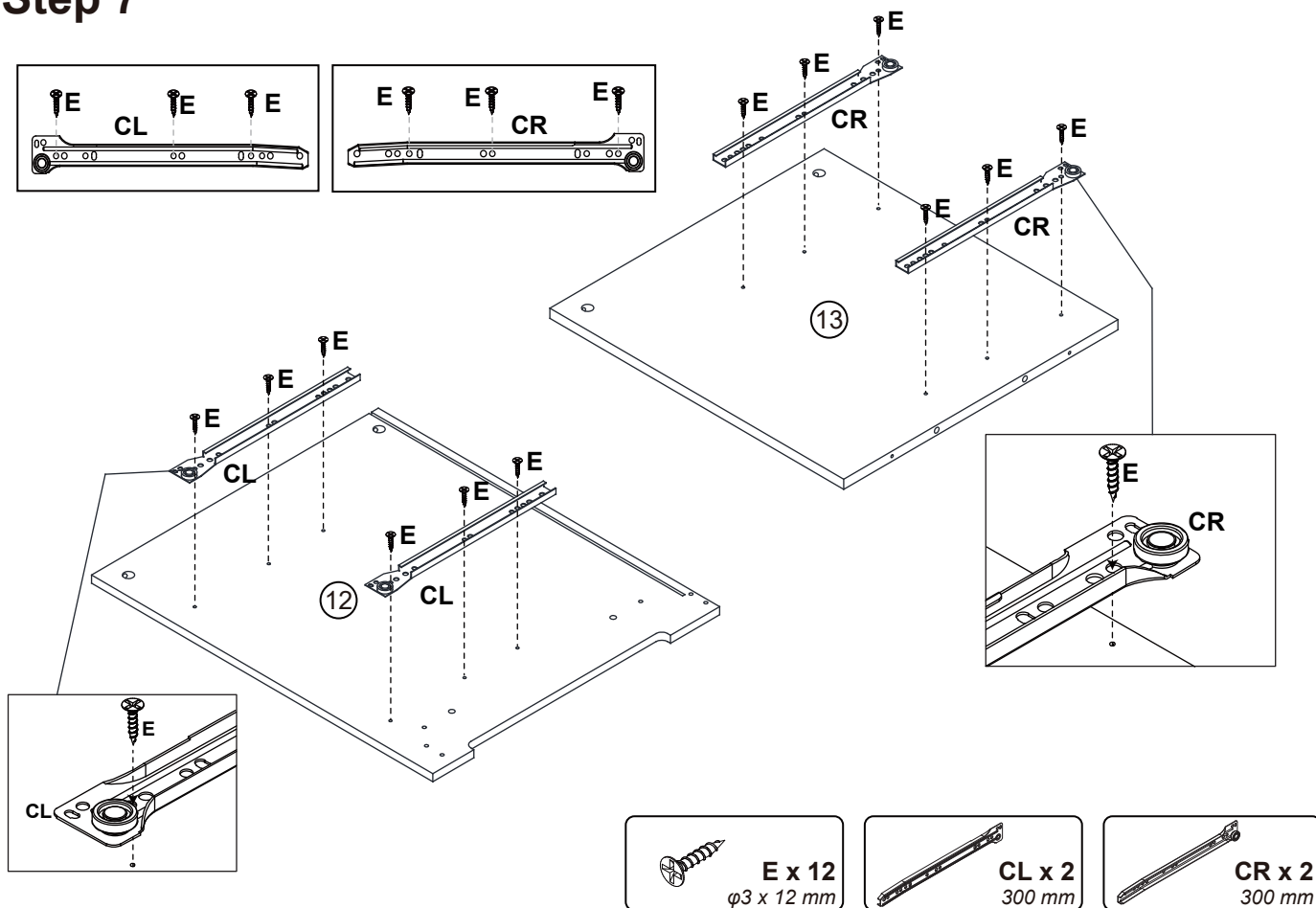
Step 5



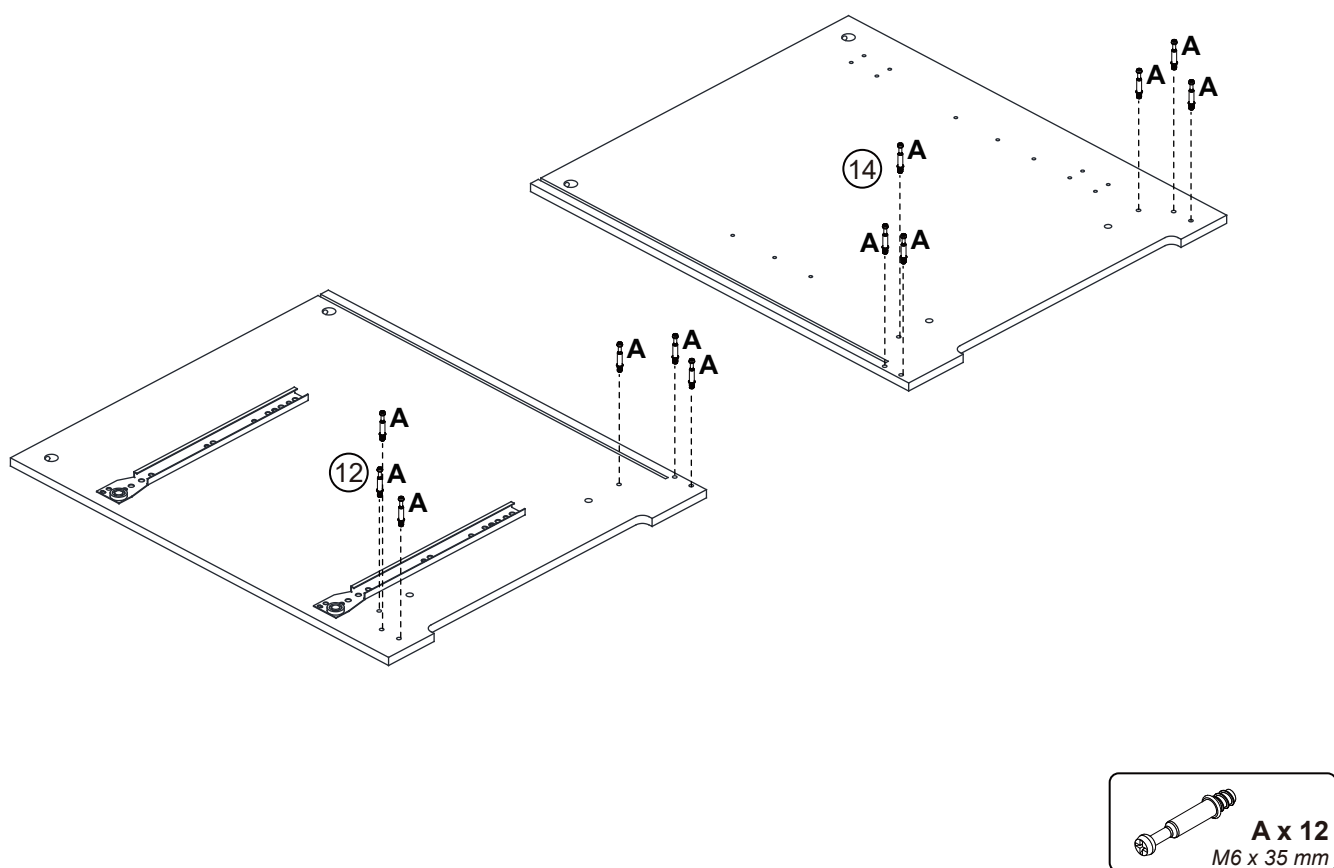
Step 6



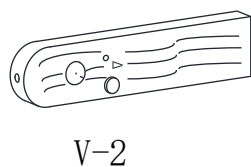
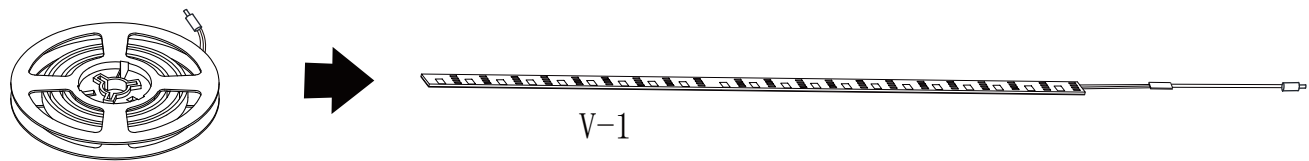
Step 7



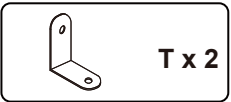
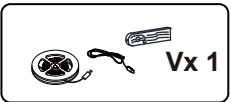
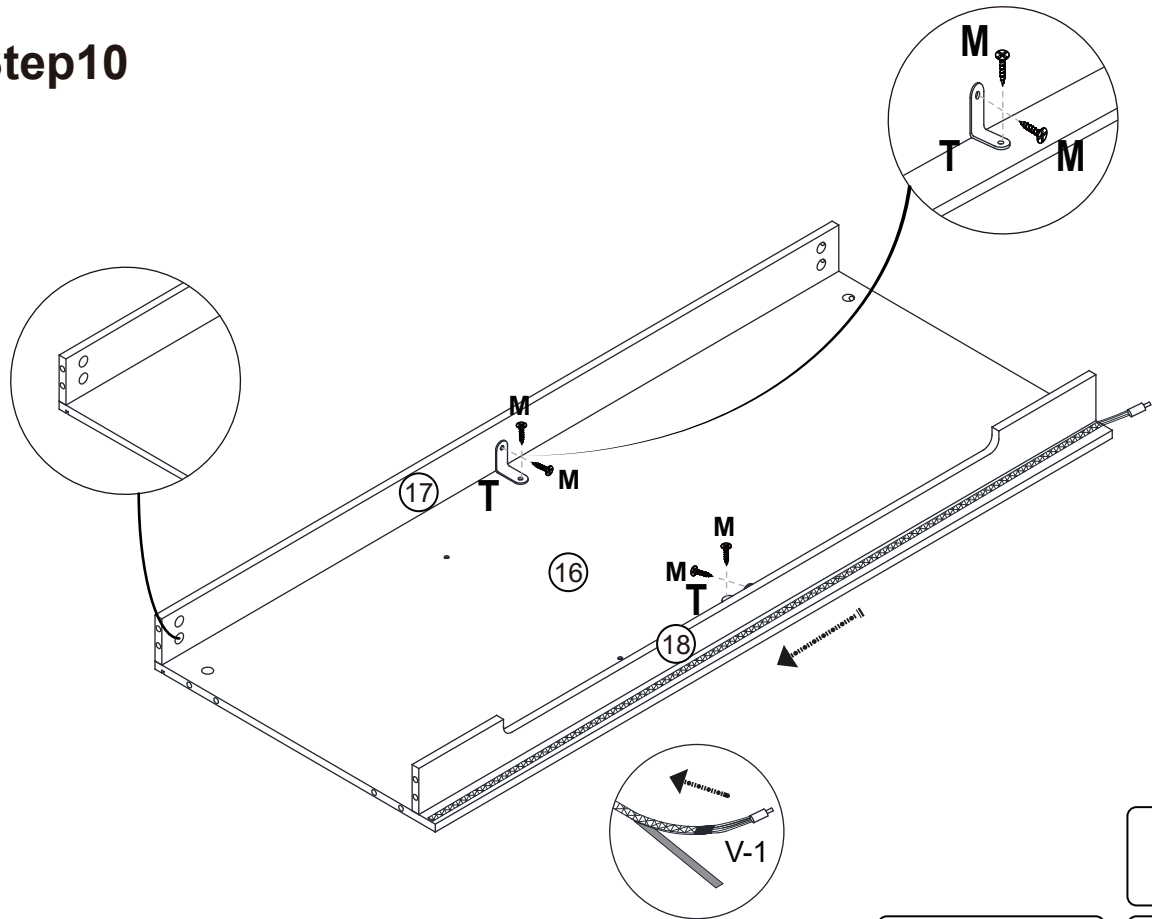
Step 8



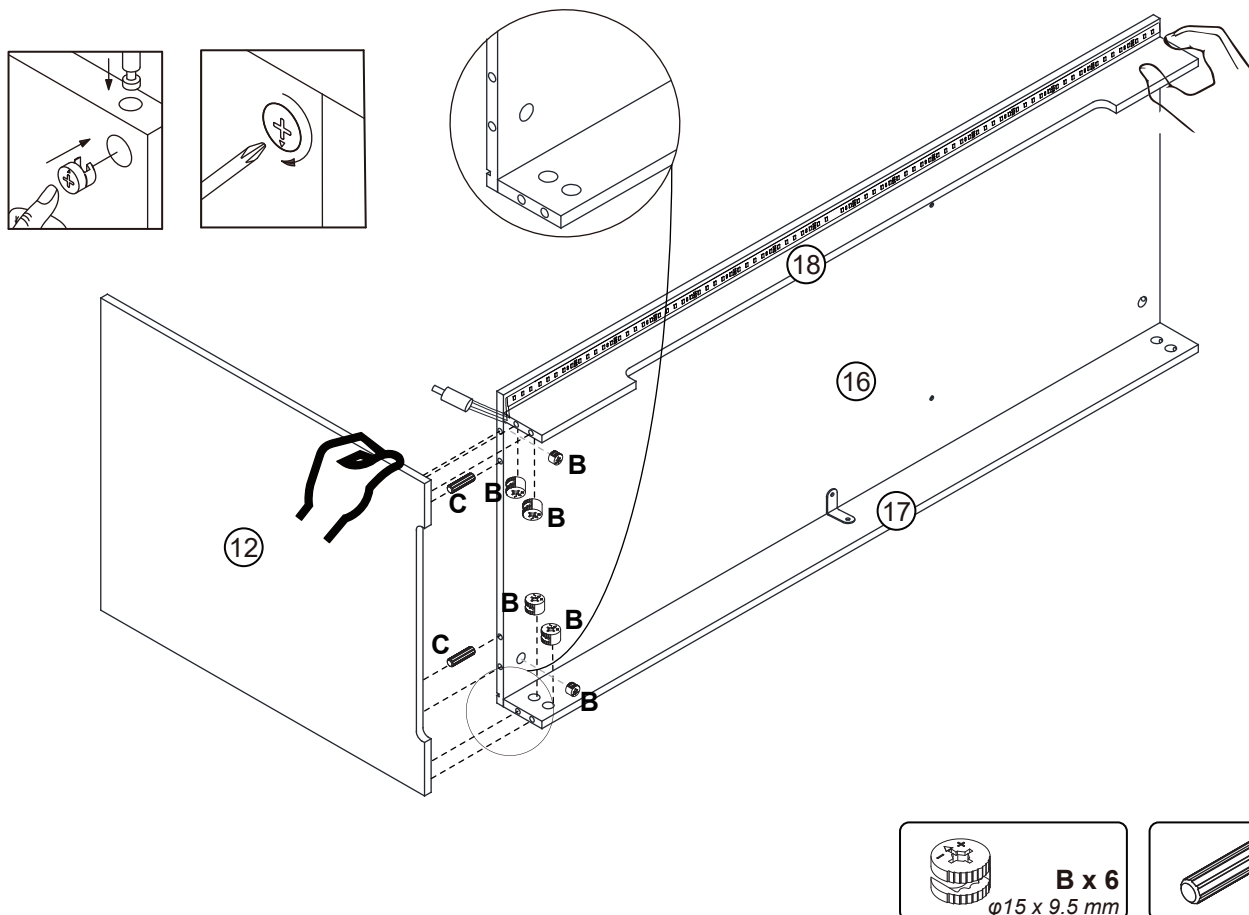
Step 9



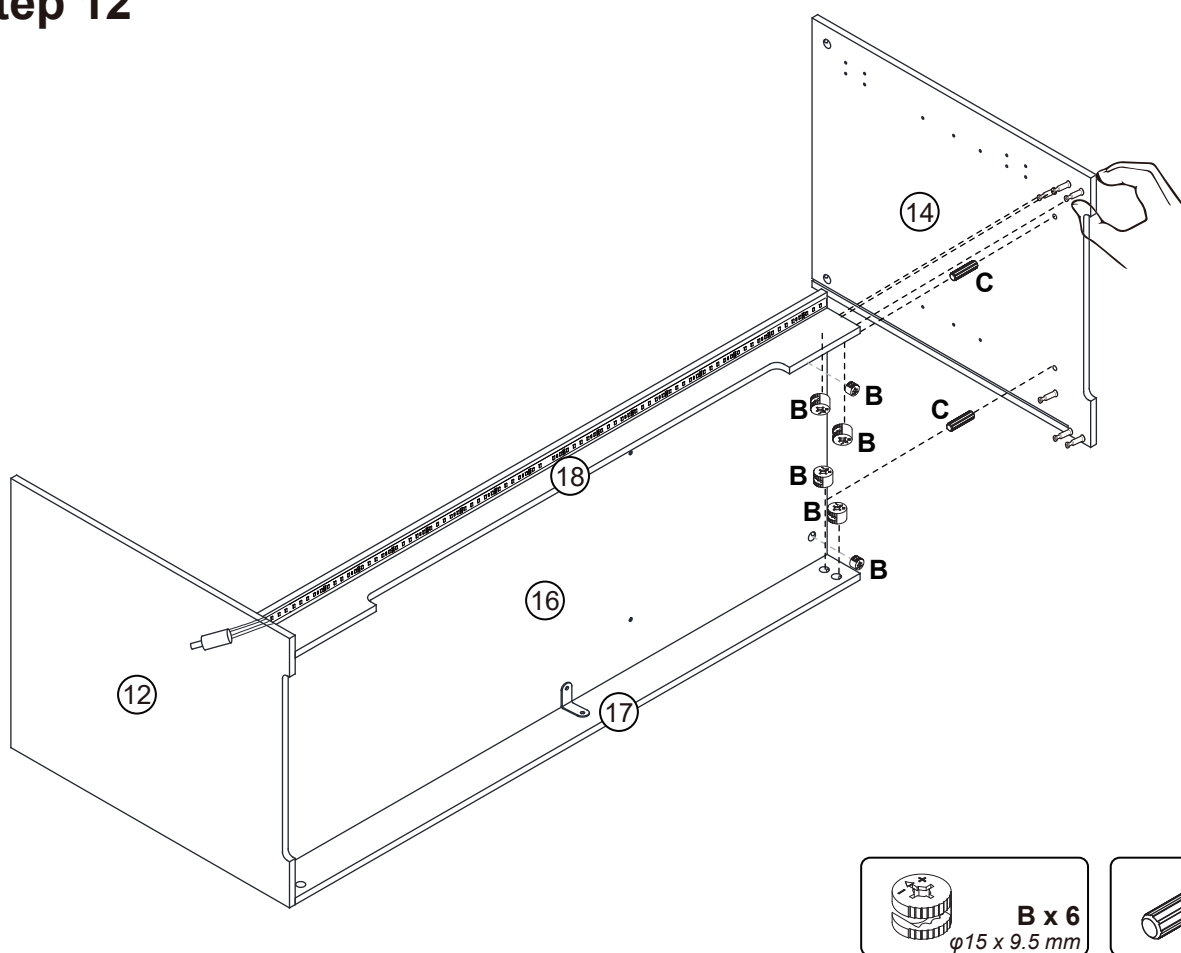
Step10



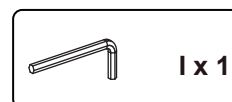
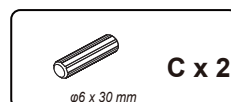
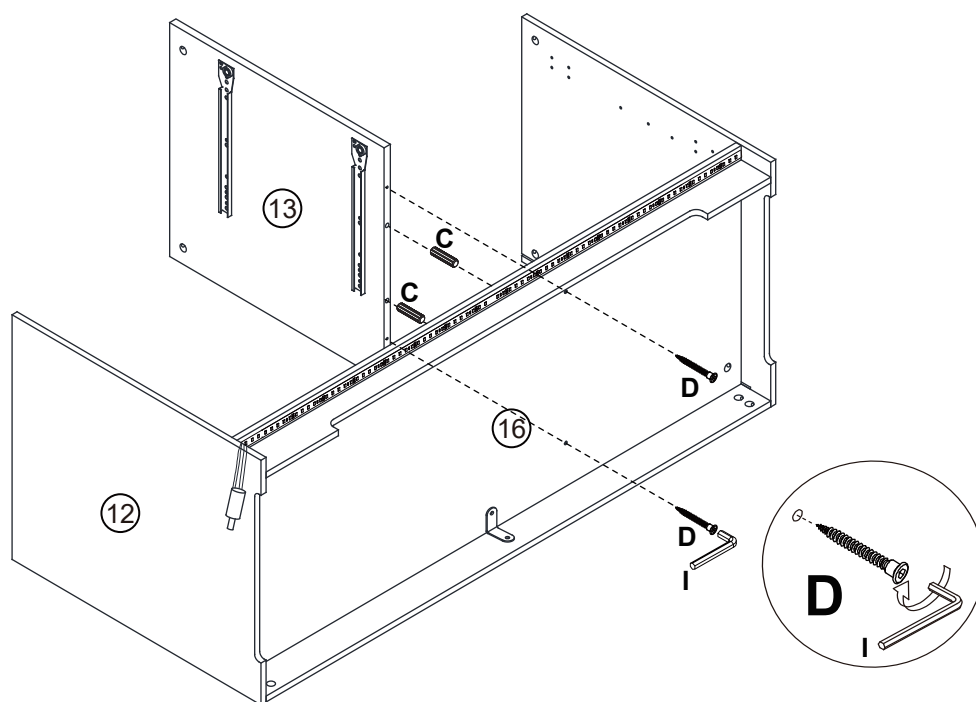
Step 11



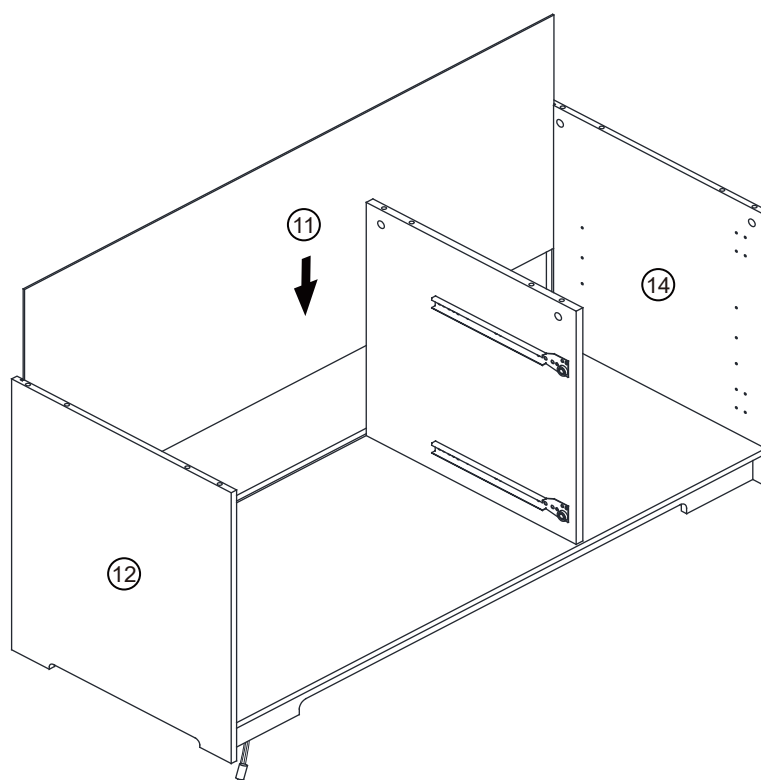
Step 12



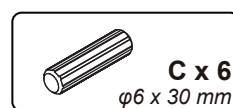
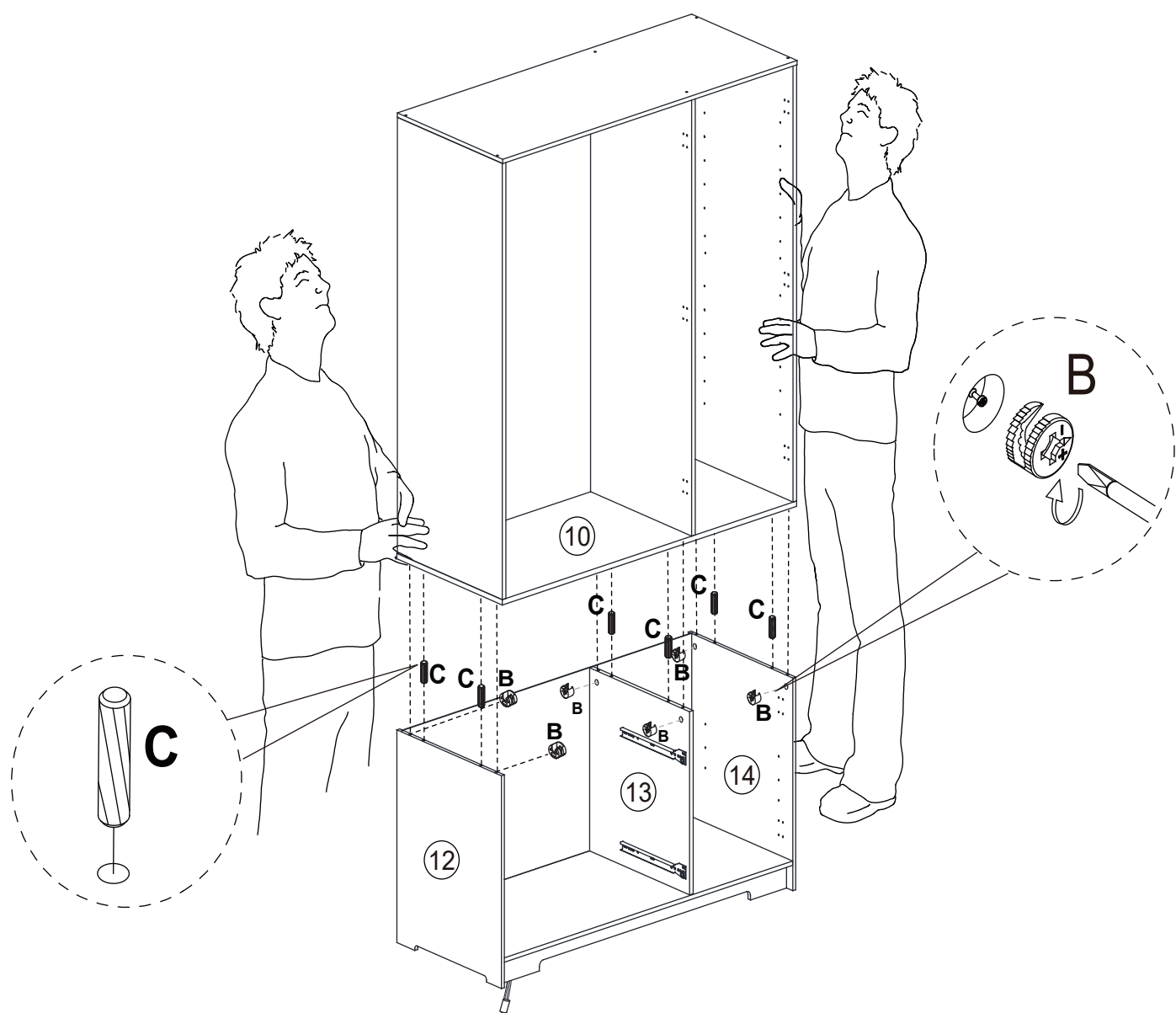
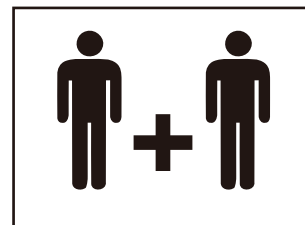
Step 13



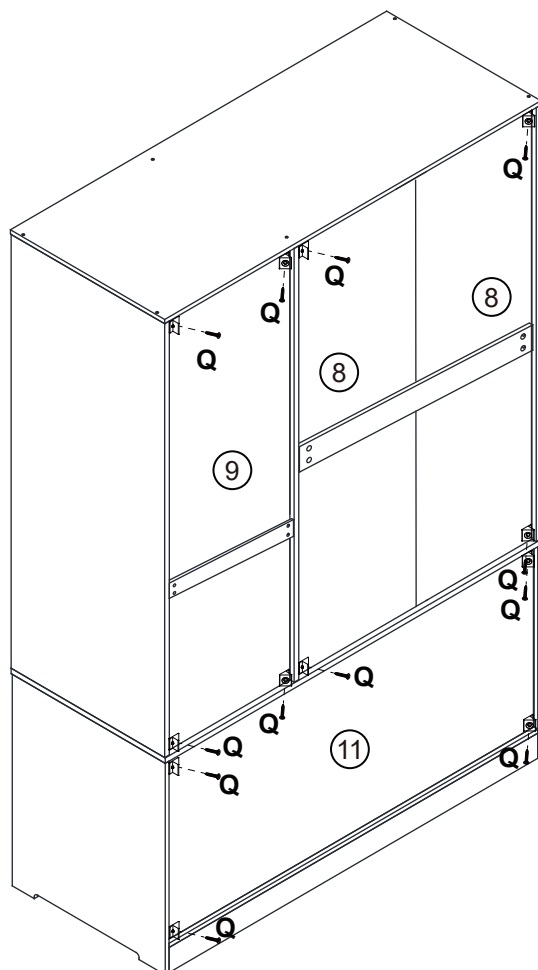
Step 14



Step 15

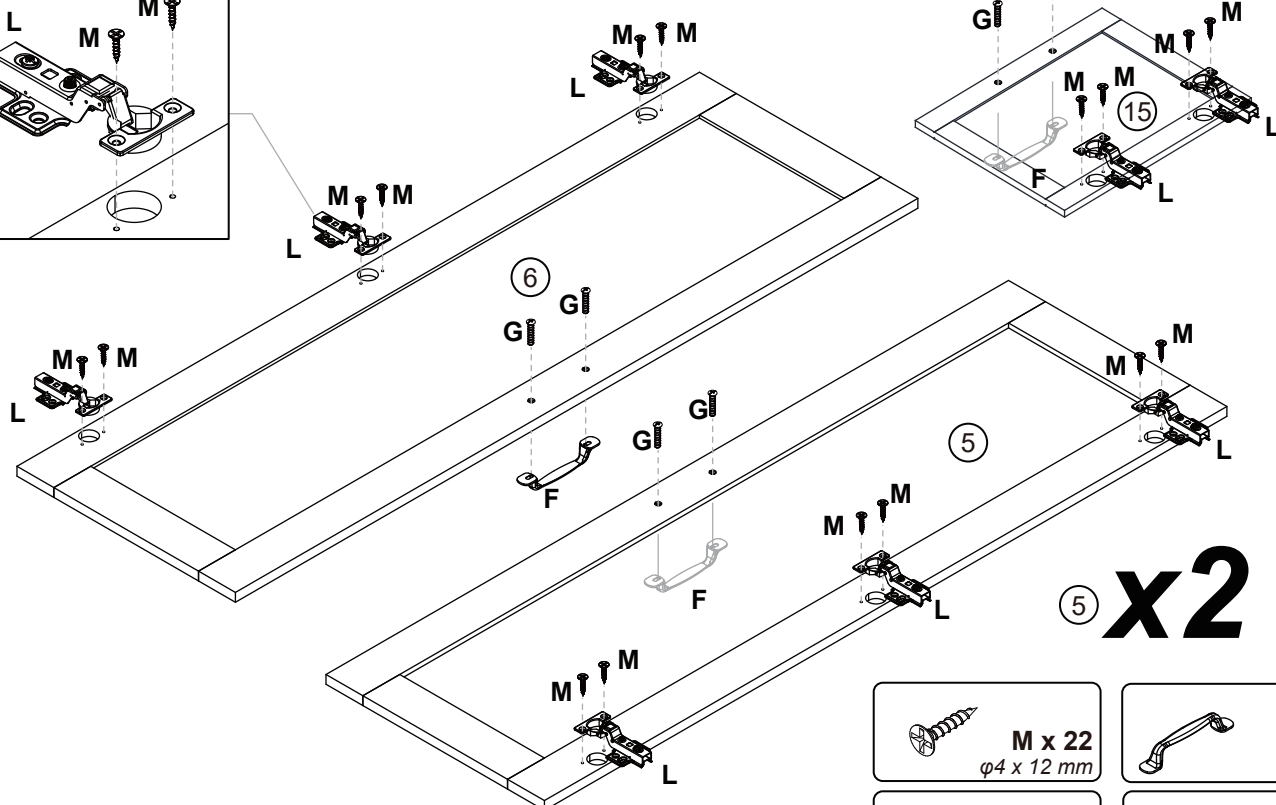
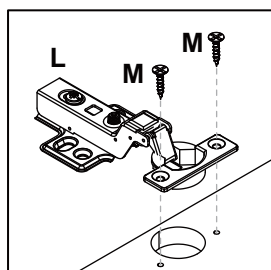


Step 16



 **Q x 12**

Step 17



5 x2

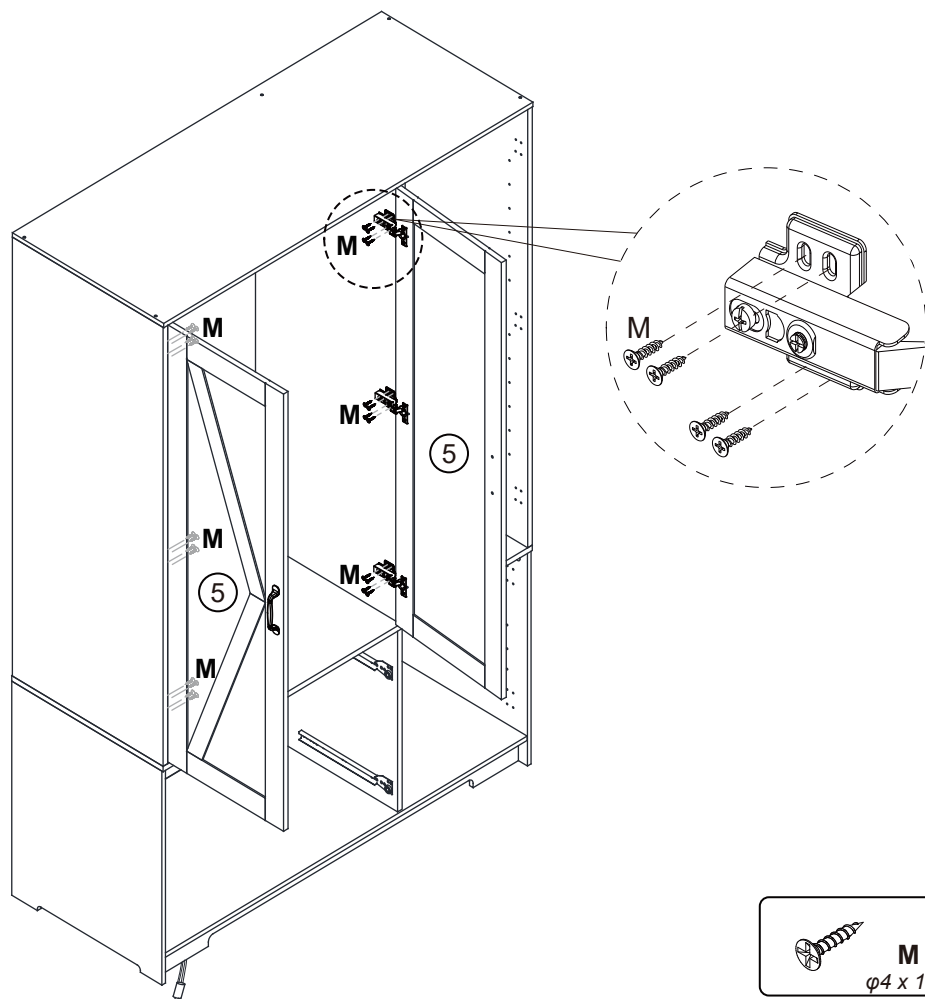
 **M x 22**
 $\phi 4 \times 12 \text{ mm}$

 **F x 4**

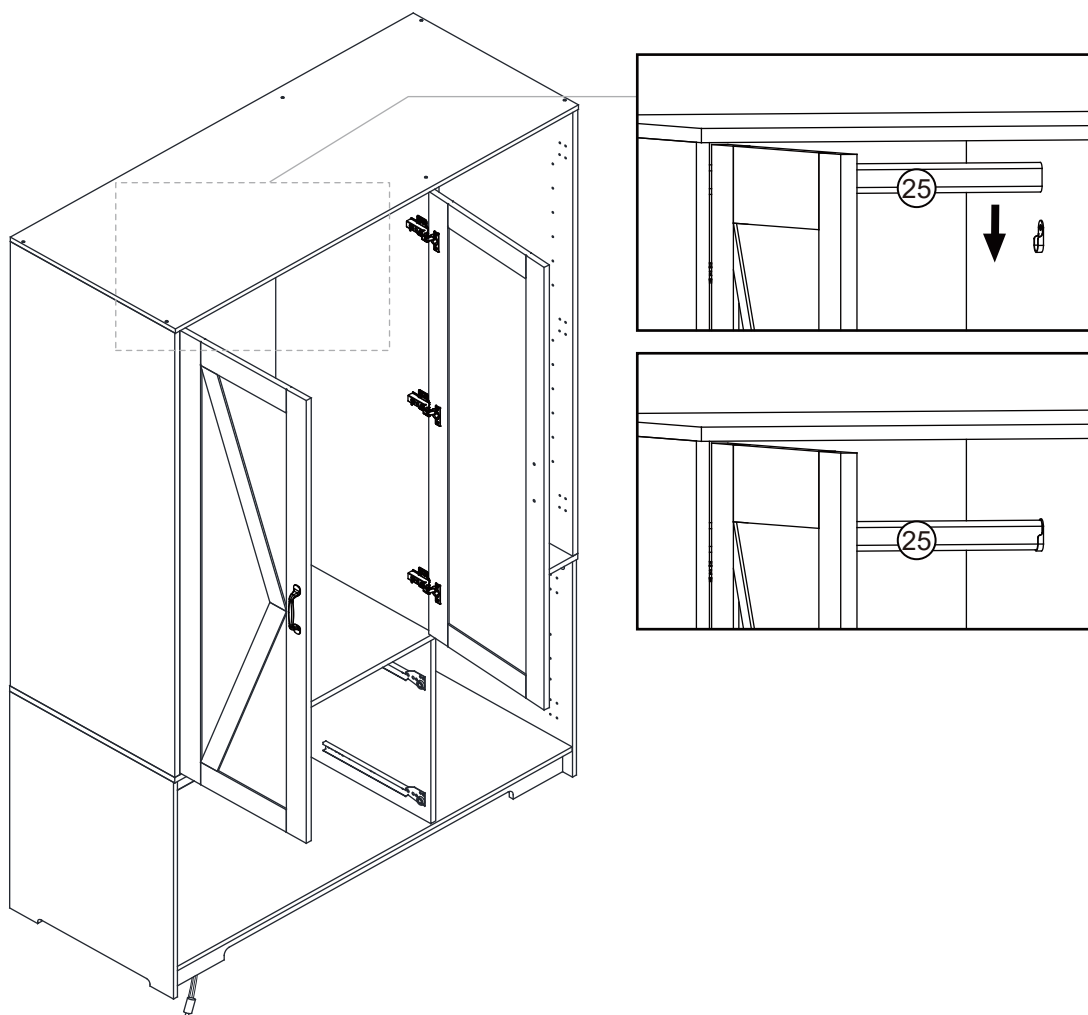
 **G x 8**

 **L x 11**

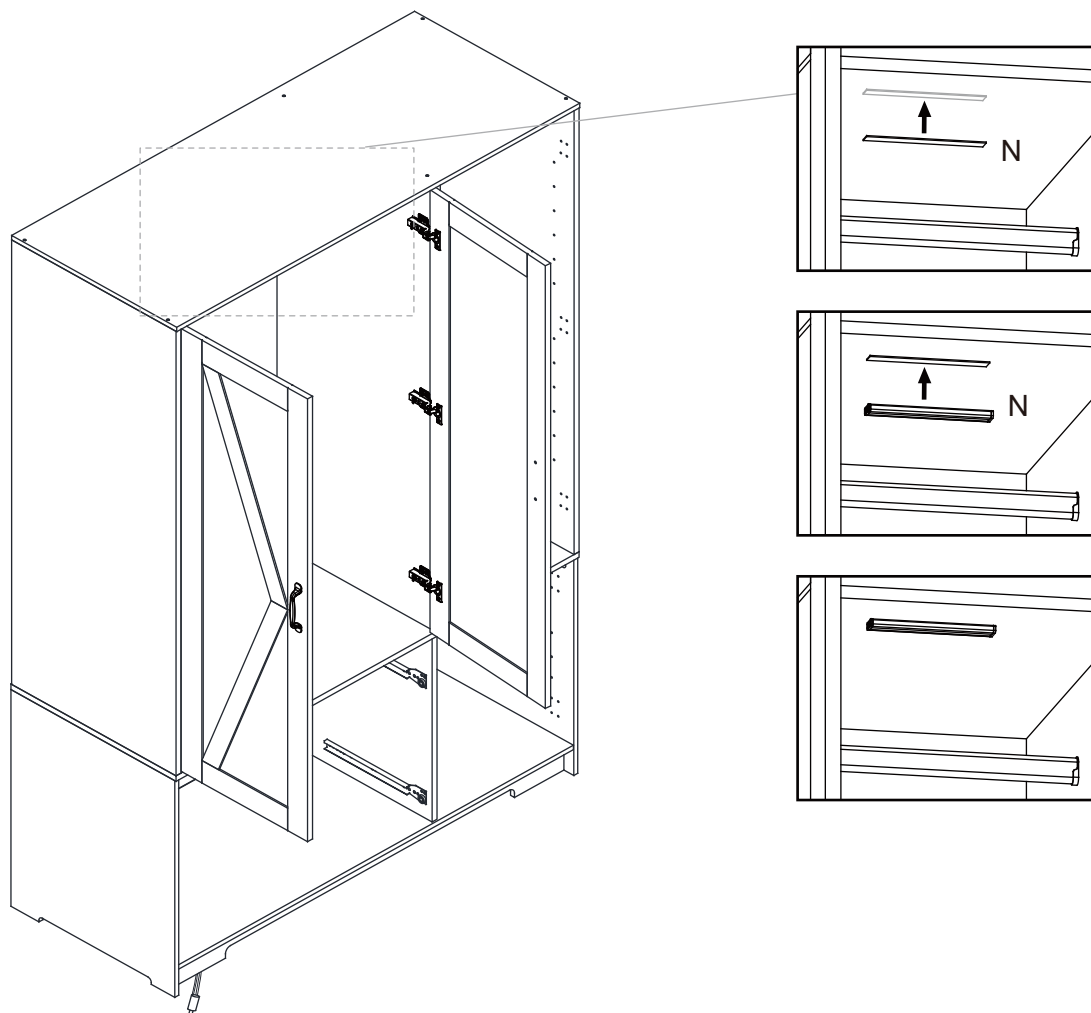
Step 18



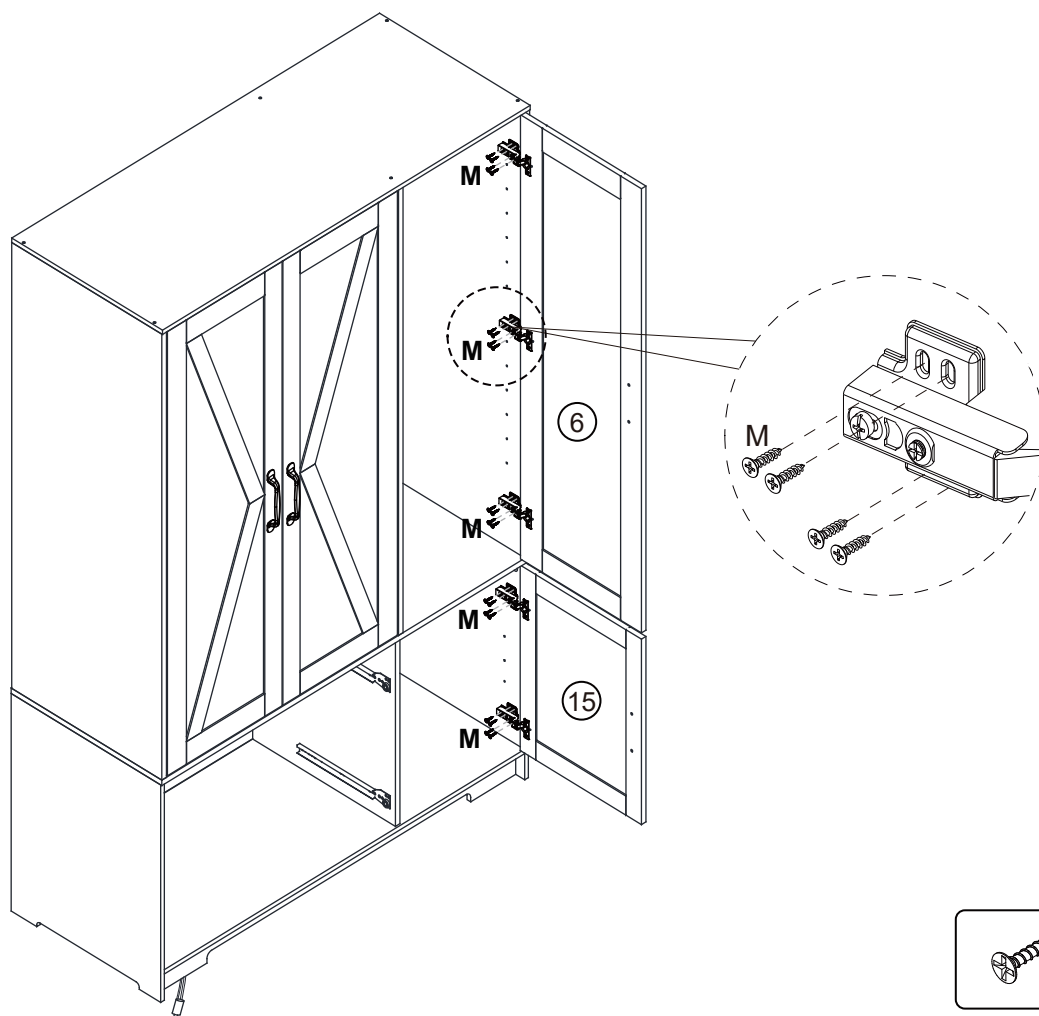
Step 19



Step 20

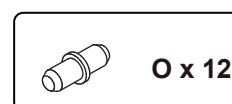
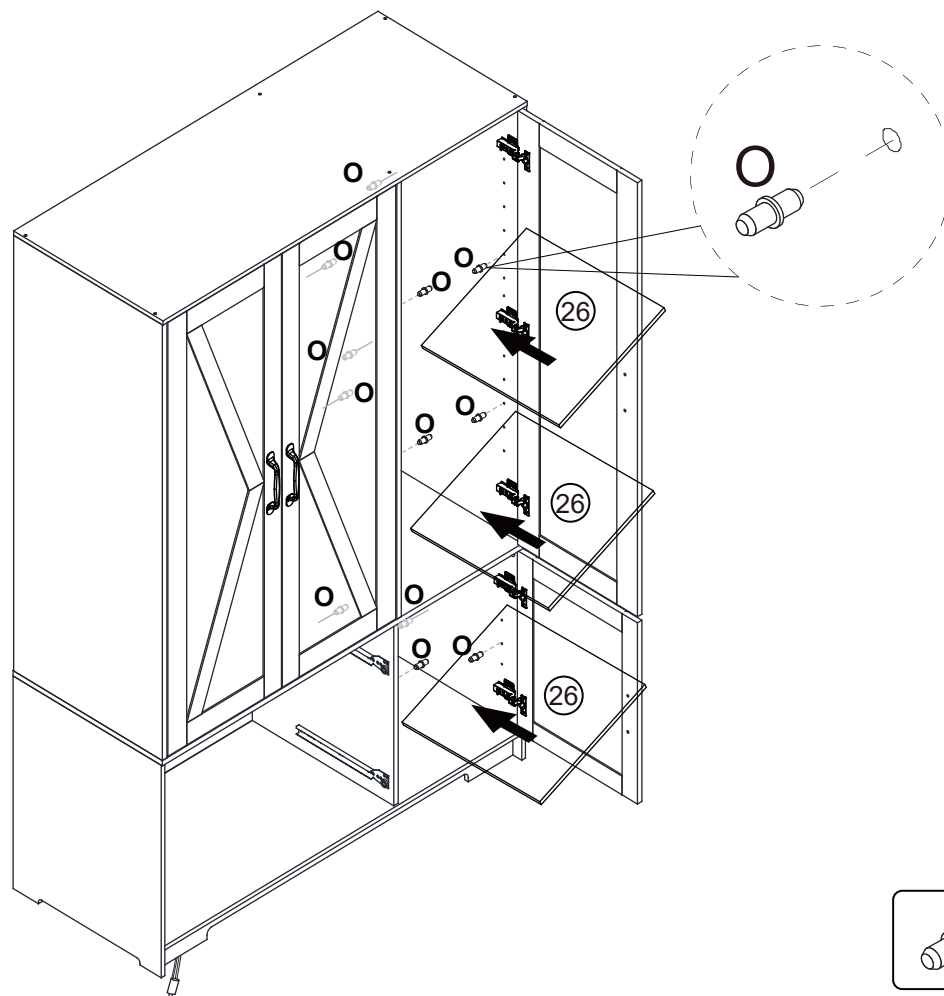


Step 21

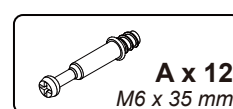
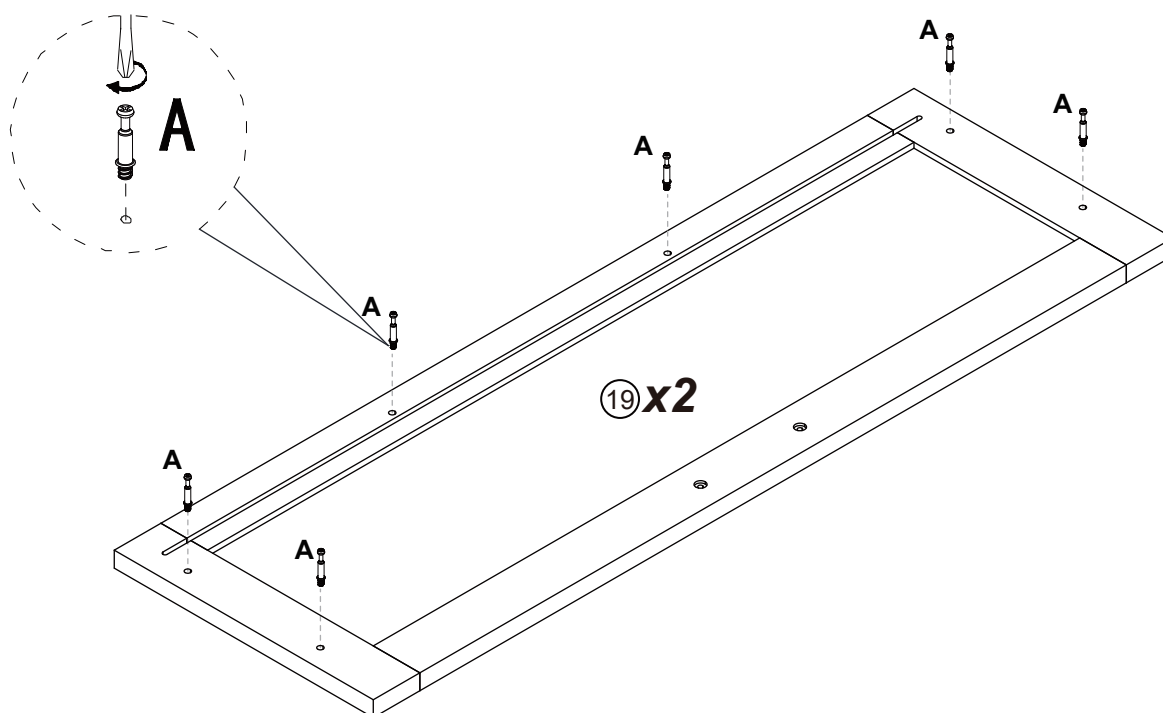


M x 20
 $\varnothing 4 \times 12 \text{ mm}$

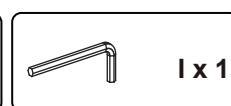
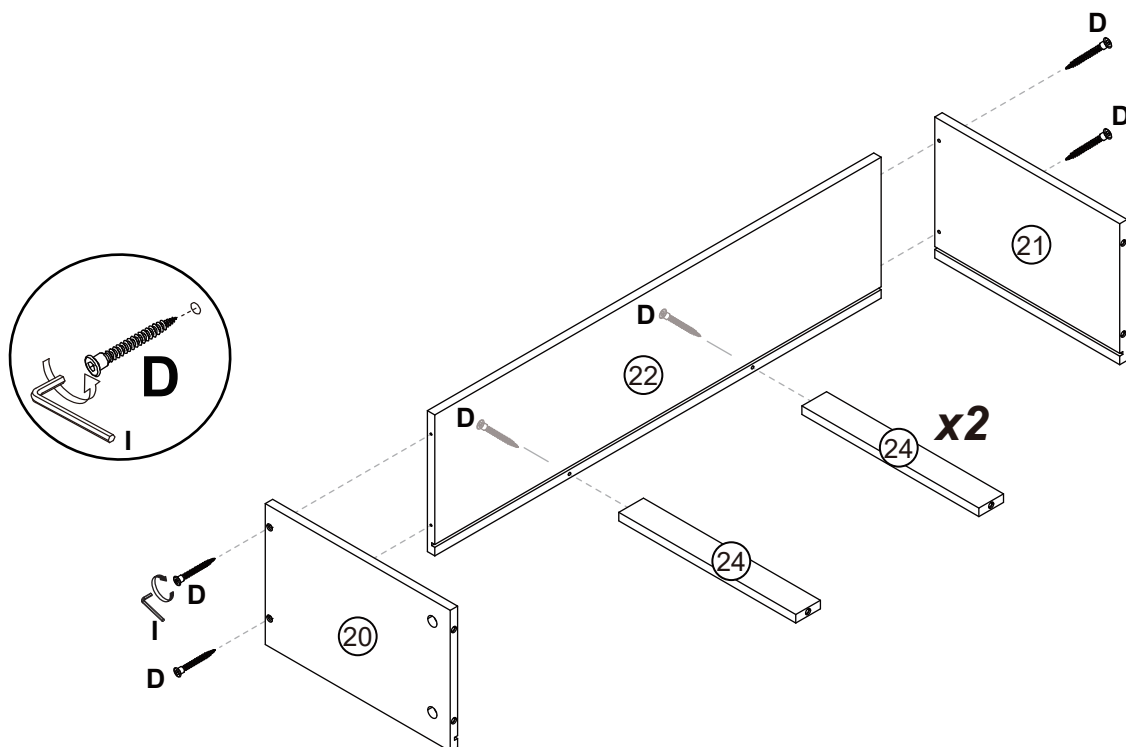
Step 22



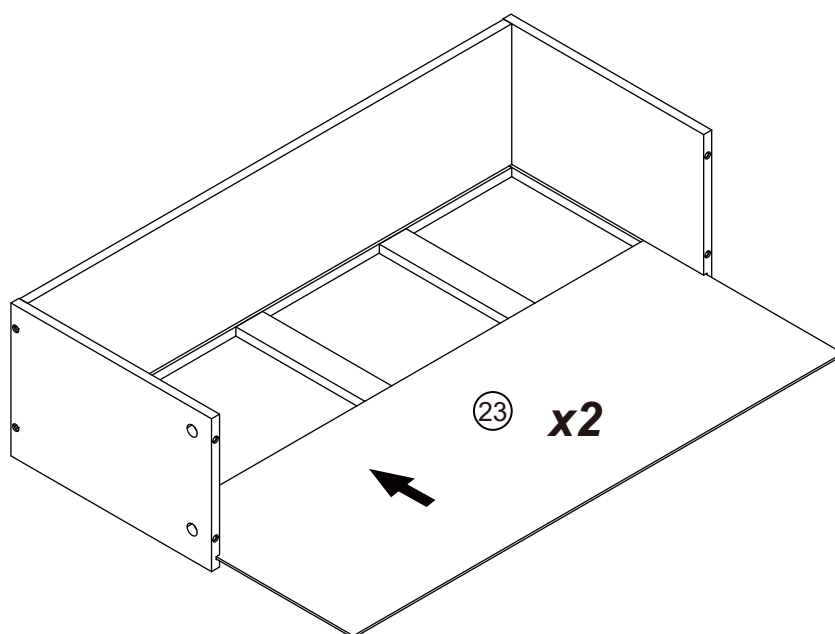
Step 23



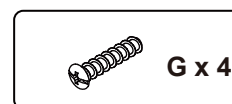
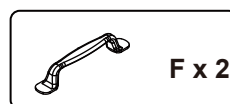
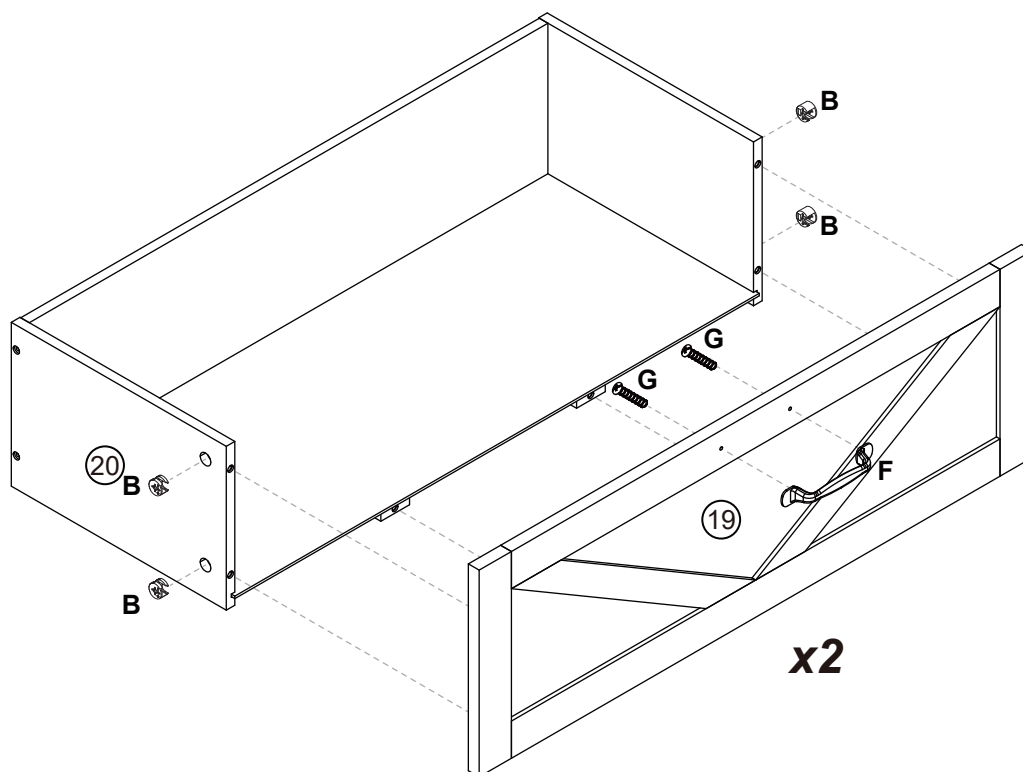
Step 24



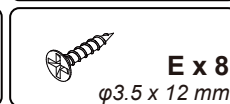
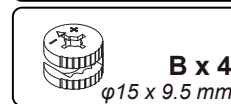
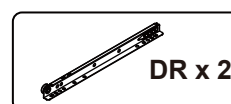
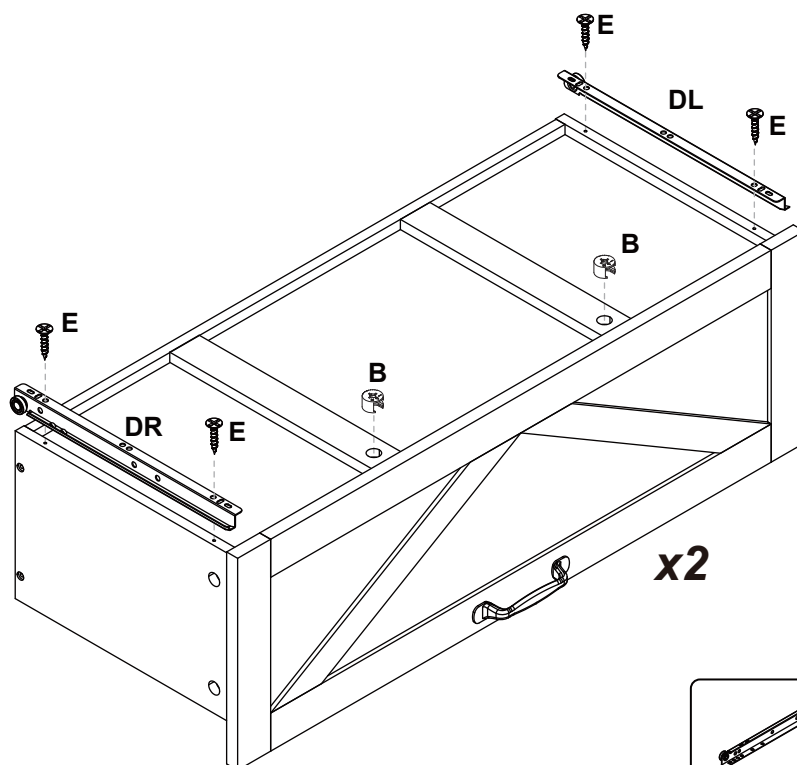
Step 25



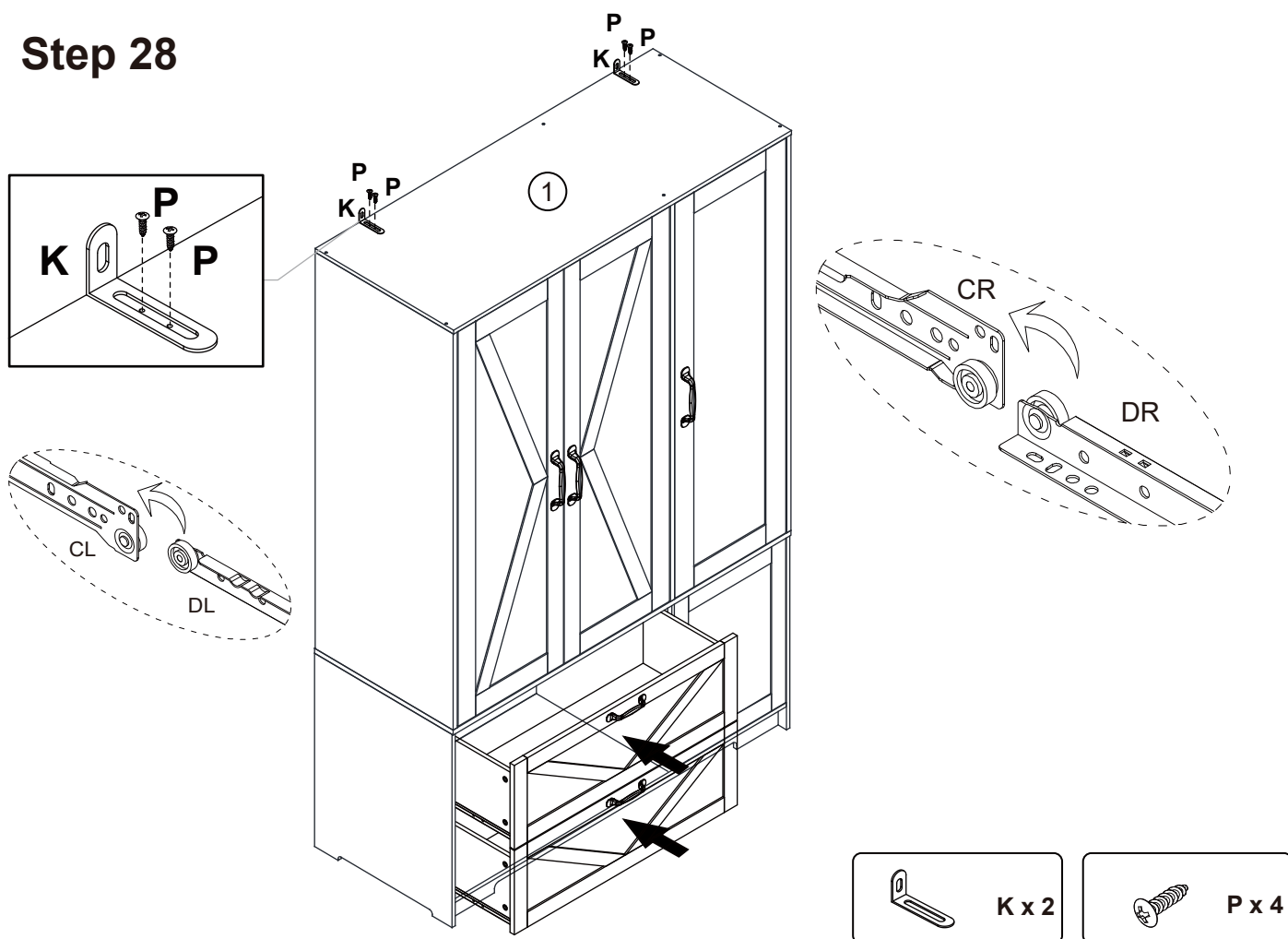
Step 26



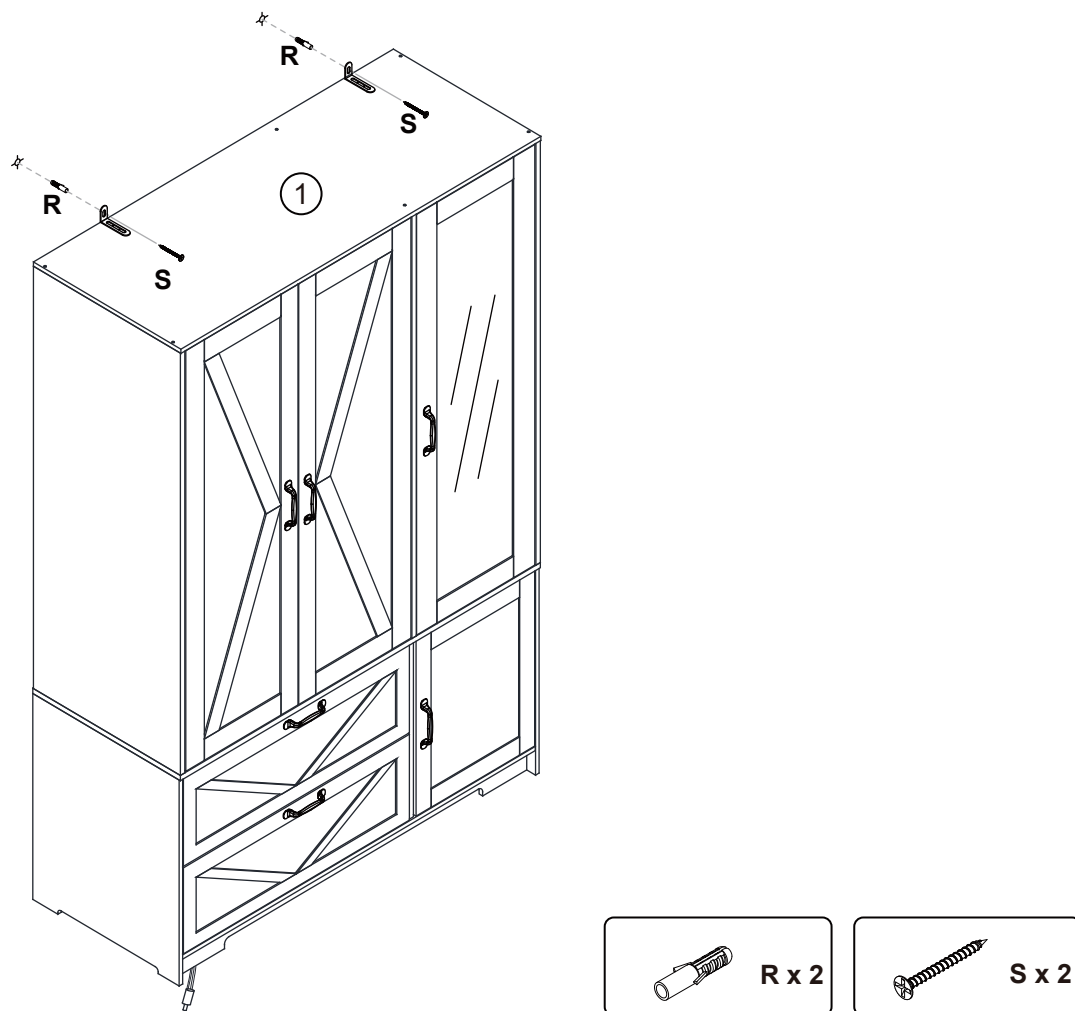
Step 27



Step 28

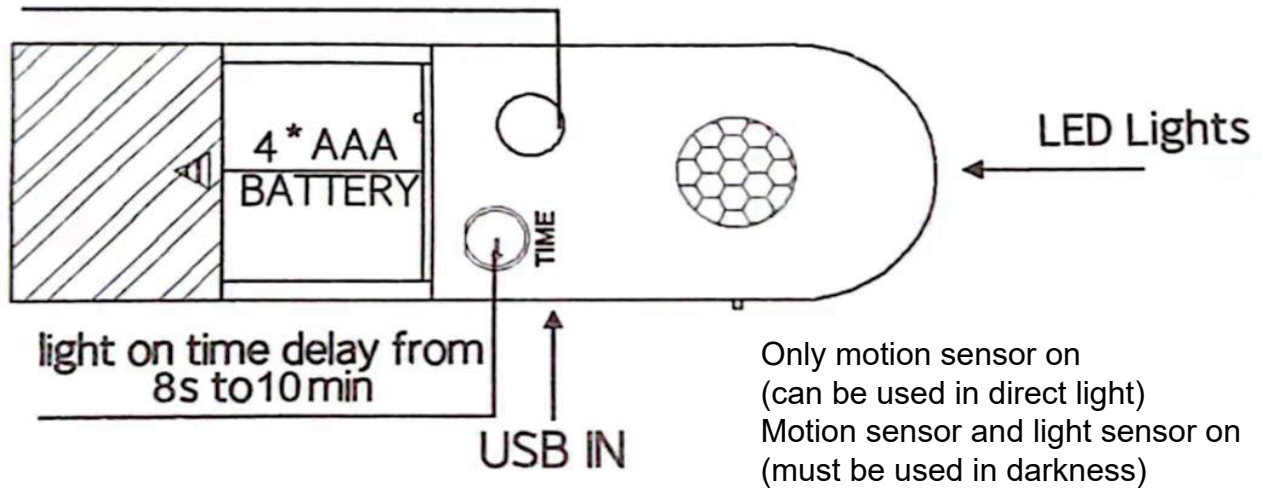


Step 29



Step 30 MOTION SENSOR SWITCH INSTALLATION INSTRUCTIONS

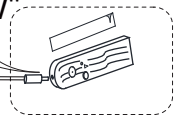
red light on: common on mode
red light off: auto sensing mode



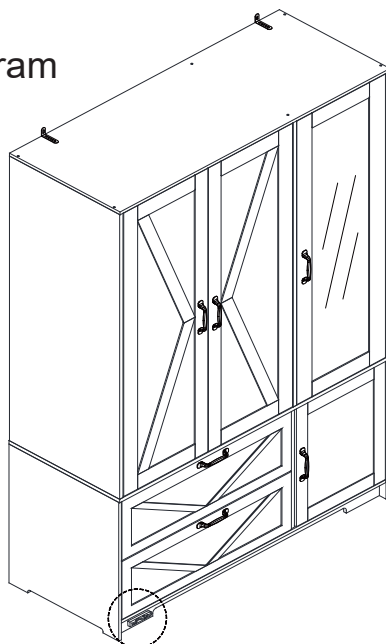
1. Don't install in a place with strong wind and heat to avoid false triggering.
2. The operating temperature should be $-5\sim 40^{\circ}\text{C}$, otherwise there may be false triggering.
3. The sensor is not waterproof, don't install it in any place with heavy water and humidity.



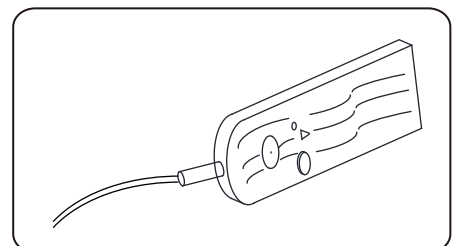
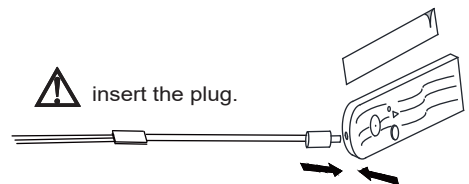
Tear the tape and stick it anywhere below"



reference diagram



insert the plug.

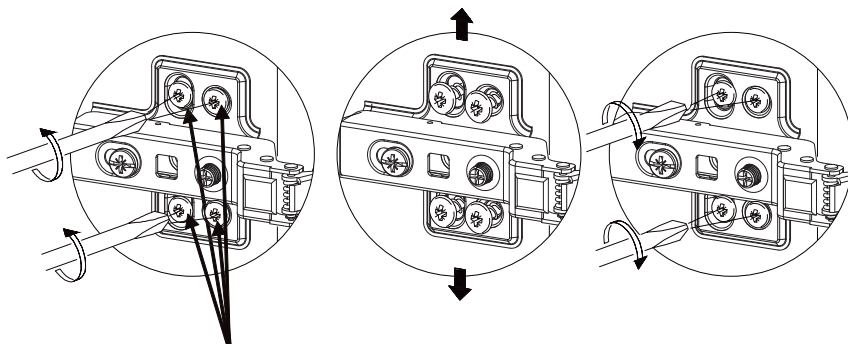
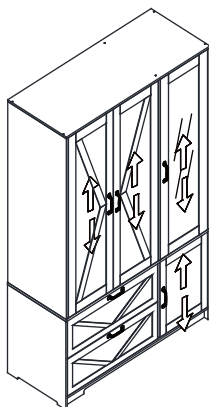


Step 31



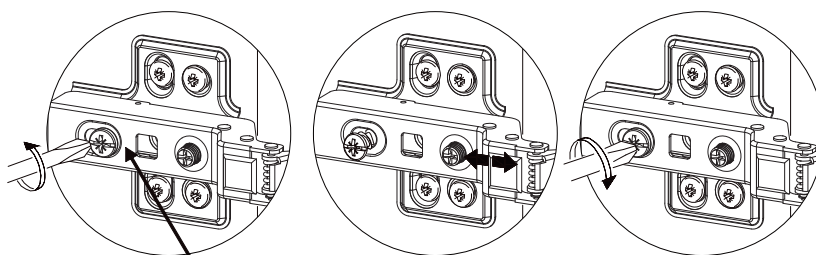
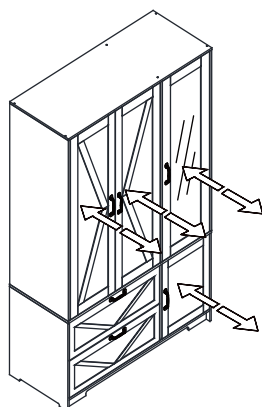
Customer Attention:

To align doors and control gap in between doors. Product doors may need adjusting during and after assembly. This can be done by adjusting appropriate screws. See below illustration.



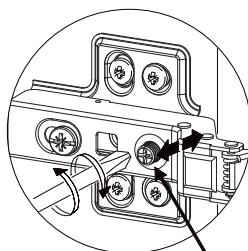
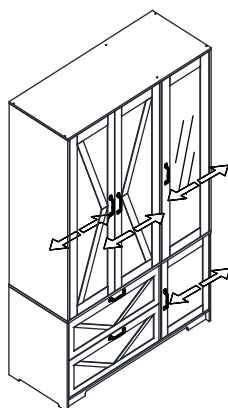
Vertical Door Adjustment:

Loosen both screws on all hinges and lift the door to the desired height. This allows an even space at the top and bottom between the door and frame.



Lateral Door Adjustment:

If door is hinge bound, (rubbing on frame as you close or open door) loosening screw shown and move the door in appropriate direction. (In or out)



Horizontal Door Adjustment:

Rotate Screw clockwise or anticlockwise. This will produce an even gap between doors and frame.