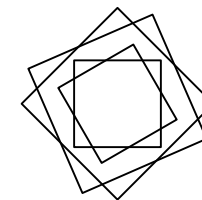
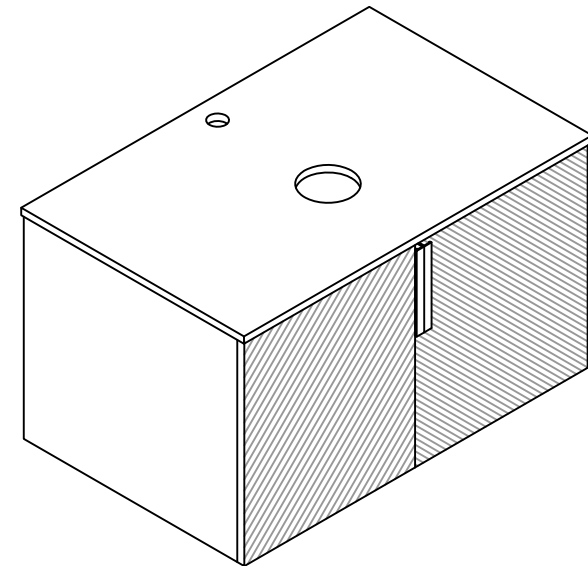


## THANKS FOR WATCHING

Your feedback is invaluable to us and we would love to hear about your experience. Please take the time to leave us a review.



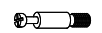







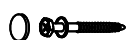



## Thank you for shopping with us!

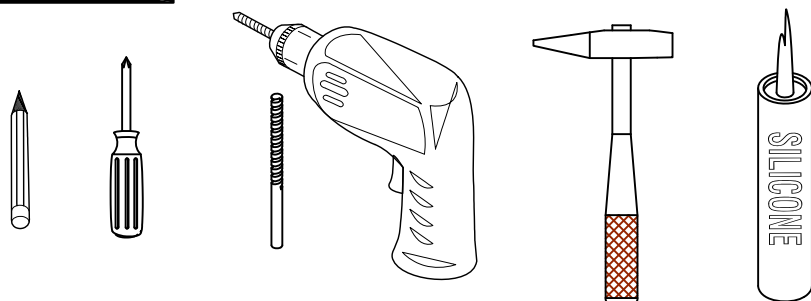
We encourage you to take a few minutes to go through this booklet. It contains important information on installation and care tips to keep your furniture looking as good as new.

# Item NO.:BV B13530 / BV B13536

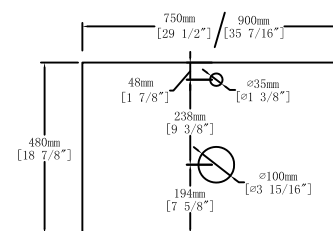
## Hardware

NO.	Draw	QTY	NO.	Draw	QTY
A	 Screws Ø4x14mm	44	H	 Bracket (19x19x35mm)	2
B	 Two-in-one connector	17	I	 Hinges ( Full cover )	4
C	 Two-in-one connector	17	J	 Handle ( Screws Ø4x14mm )	2
D	 Wood plug	4	K	 Anti-collision gasket	4
E	 Plastic anchor(Ø10mm)	2	L	 Screwdriver	1
F	 Screws for fix on the wall	2			
G	 Bracket (53x70x44mm)	2			

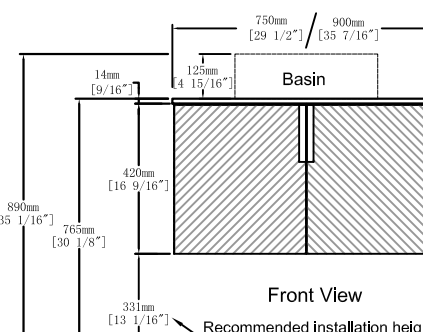
## Recommended tools



## Dimensions

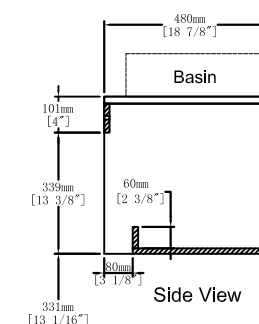


Top View



Front View

Recommended installation height



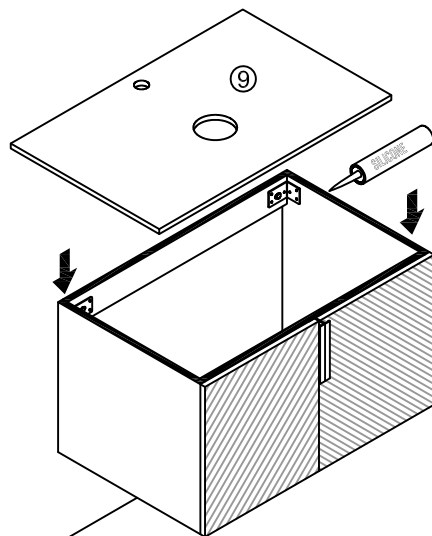
Side View

Floor

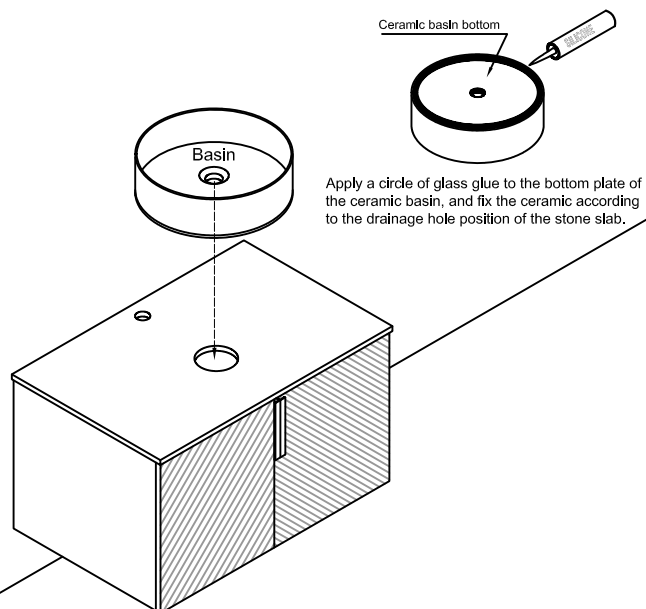
## CARE CLEANING AND MAINTENANCE

- 1.Dust regularly with a soft , dry cloth.
- 2.Avoid the use of all chemicals household cleaners, abrasives, or cleaners that contain lemon, vinegar, or other acids that may damage the finish.
- 3.Excessive exposure to sunlight and extreme changes in temperature and moisture can damage wood furniture.
4. The sink is fragile, please pay attention to maintaining its appearance.
- 5.Do not place hot appliances, such as curling irons and hot hair dryers directly on the countertop. Wipe spills immediately.

## Step 13

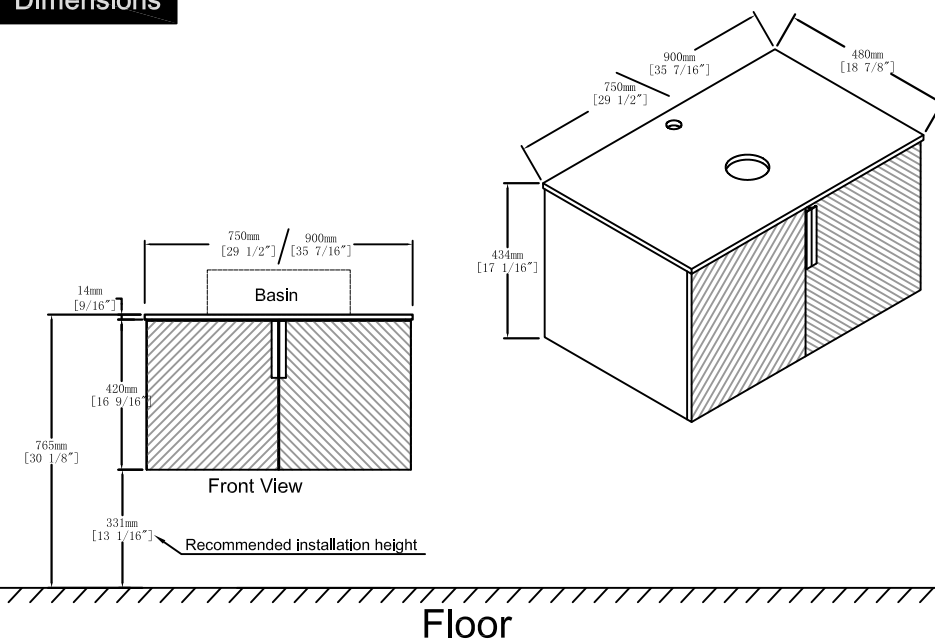


## Finished

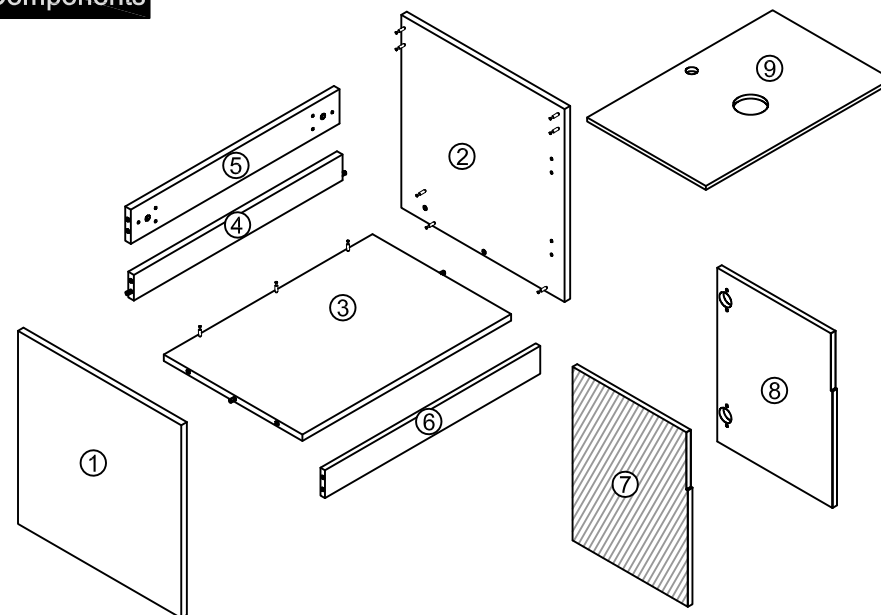


The specific basin type is subject to your purchase order.

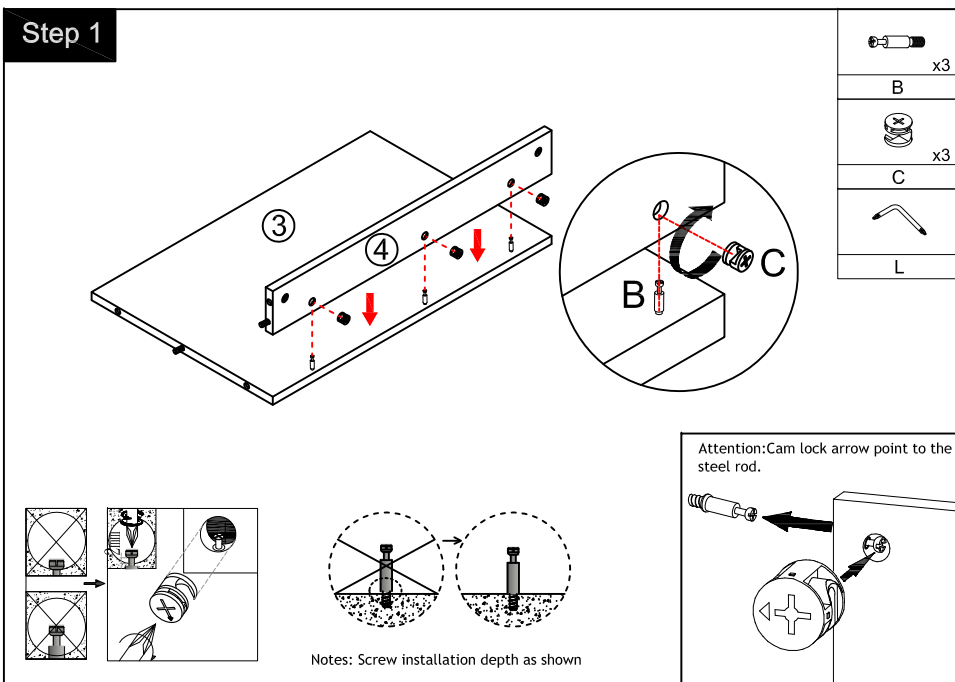
## Dimensions



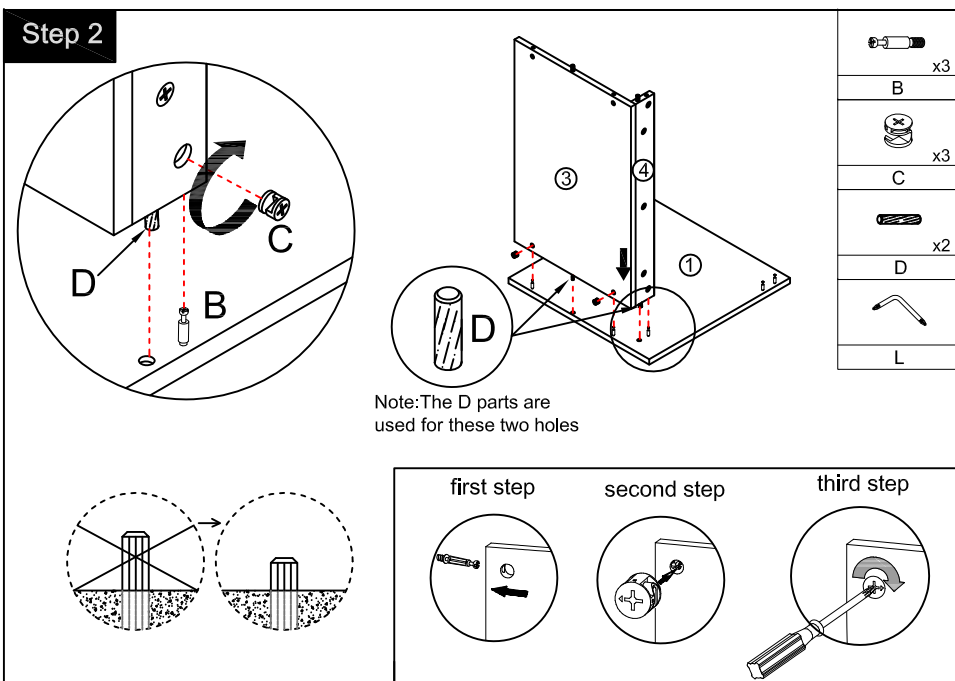
## Components



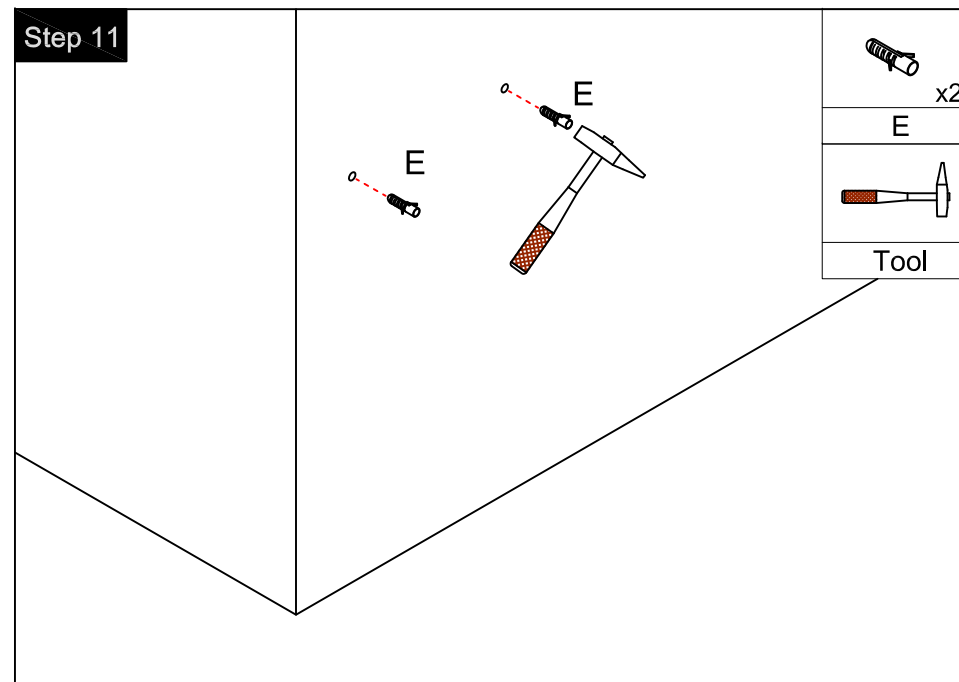
## Step 1



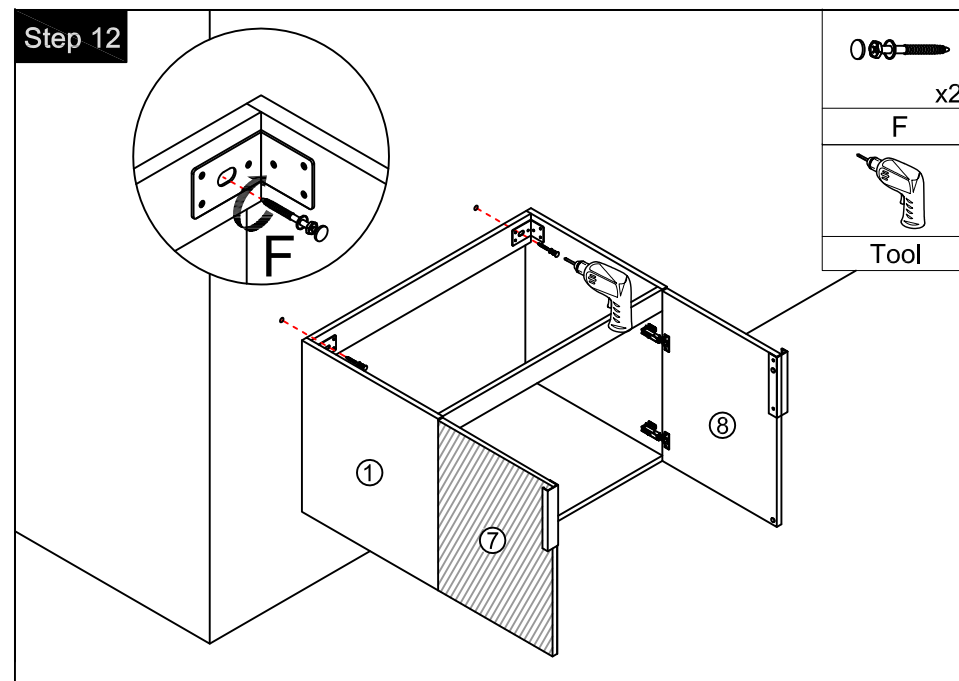
## Step 2

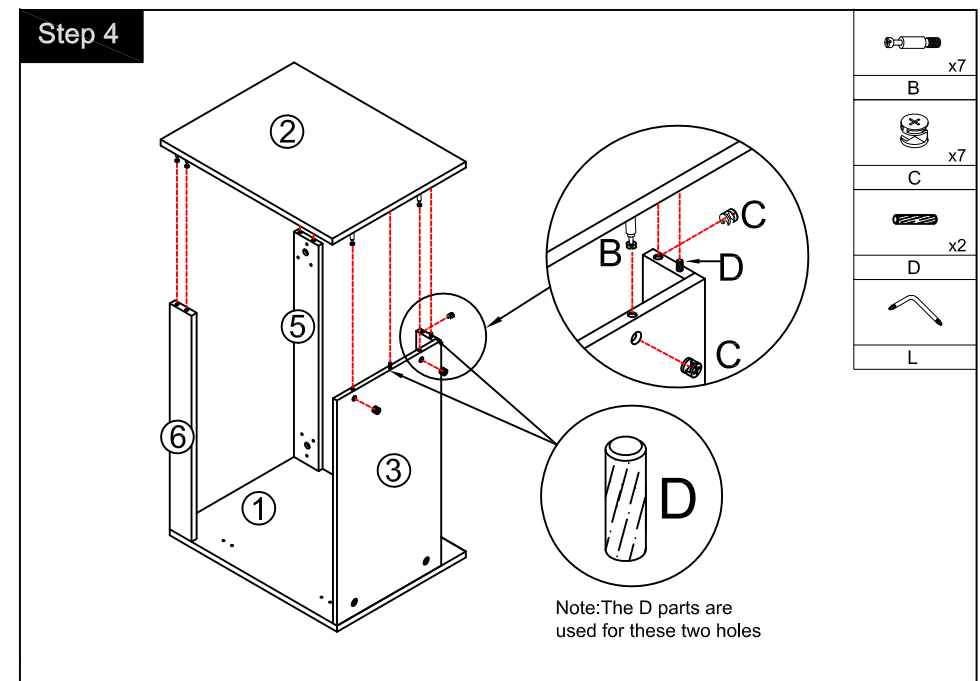
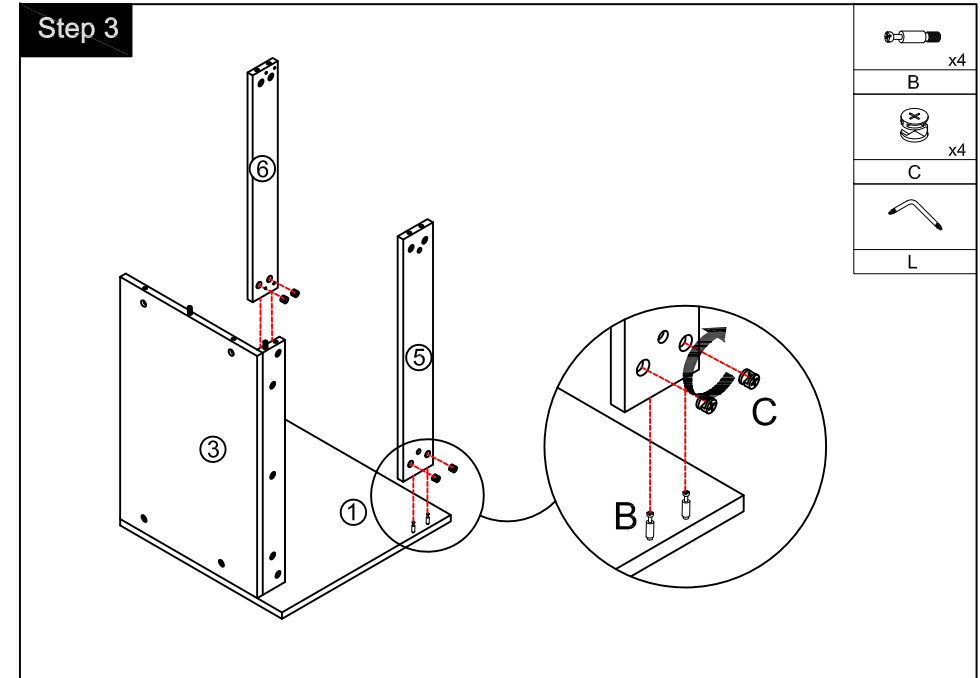
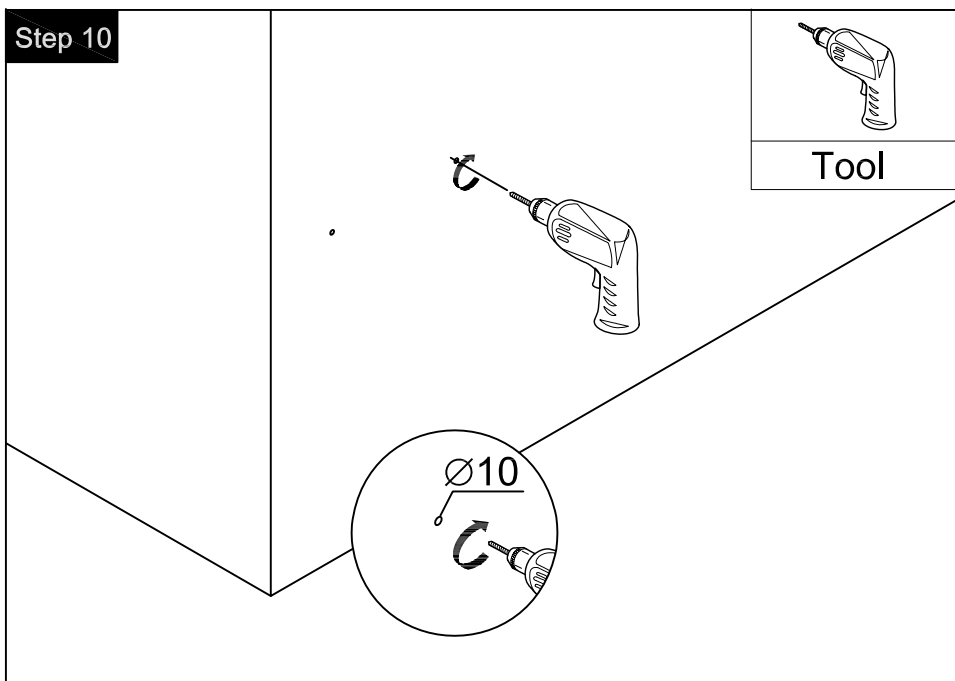
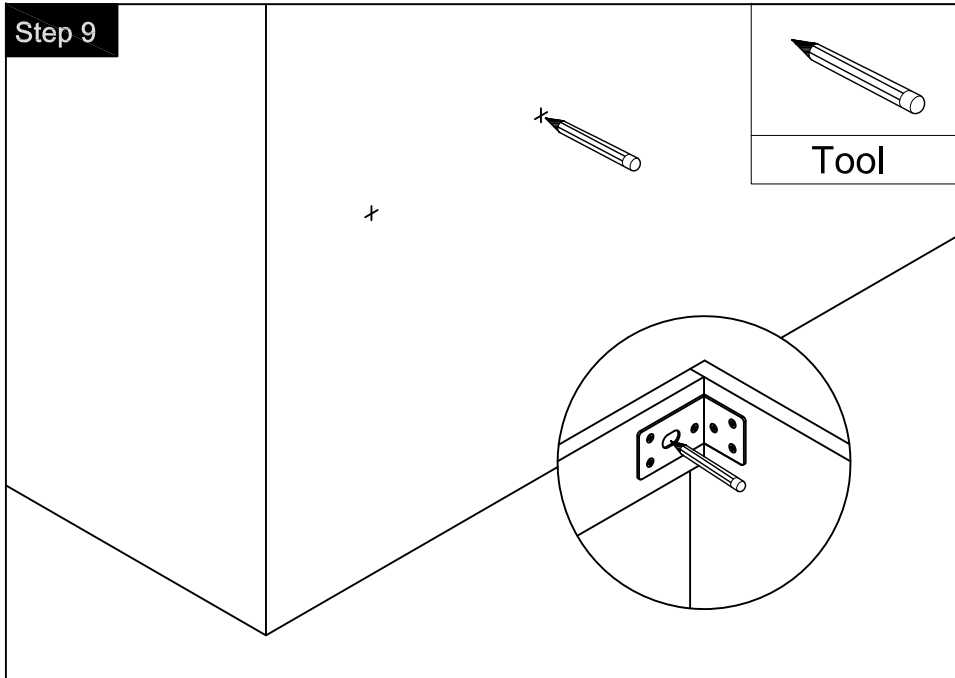


## Step 11

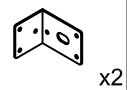
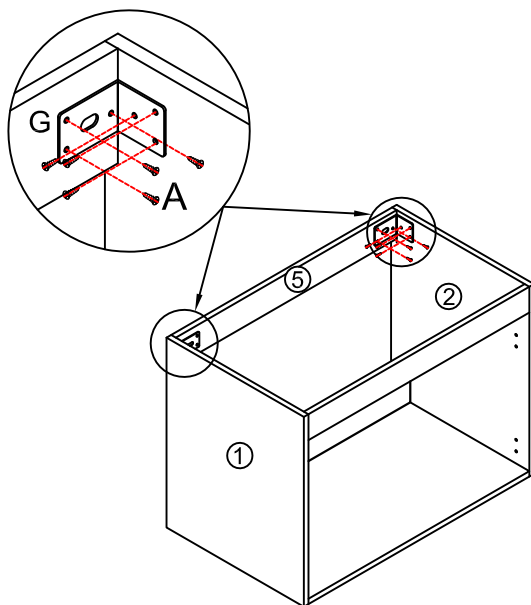


## Step 12





## Step 5



x2

G

( $\varnothing 4 \times 14\text{mm}$ )



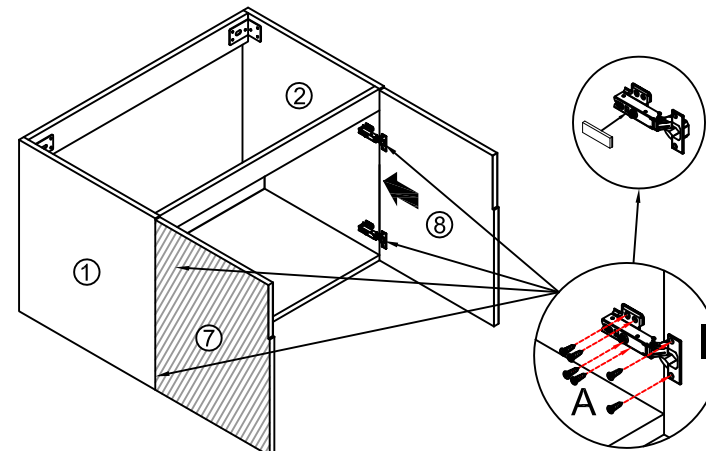
x12

A



Tool

## Step 7



x4

( $\varnothing 4 \times 14\text{mm}$ )



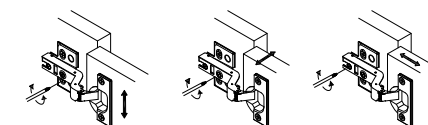
x24

A

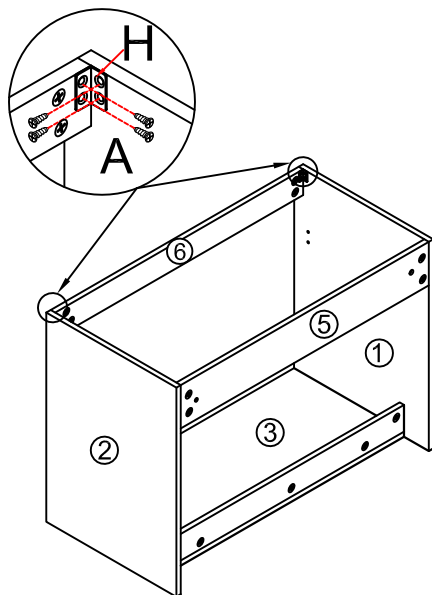


Tool

You can adjust the doors by tightening or loosening the screws on the hinge. →



## Step 6



x2

H

( $\varnothing 4 \times 14\text{mm}$ )



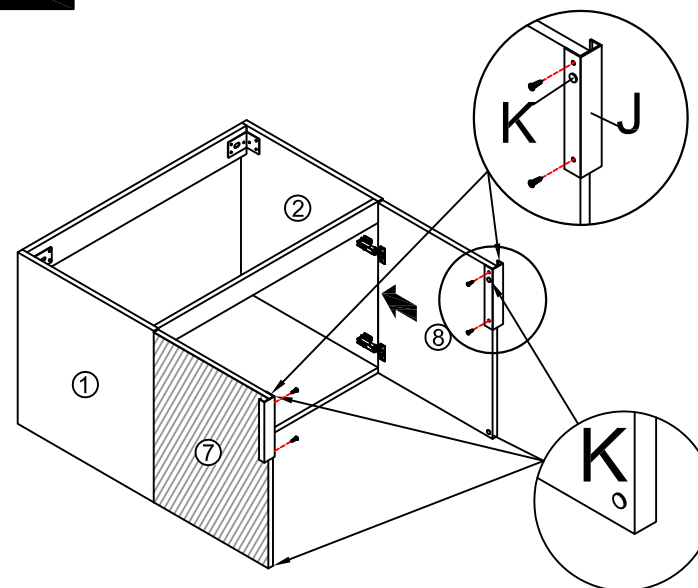
x8

A



Tool

## Step 8



J



x4

K



Tool