

Before you start, here are a few quick pointers:

The installation can be finished by 1 person. Also, you can call a friend to join the fun!



+



**SUGGEST
2 PEOPLE**



+



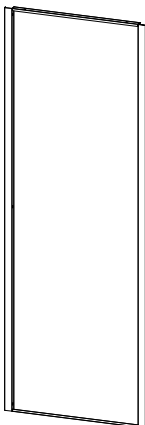
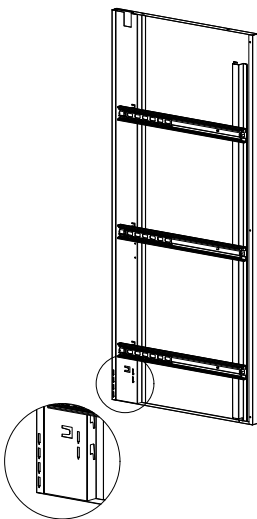
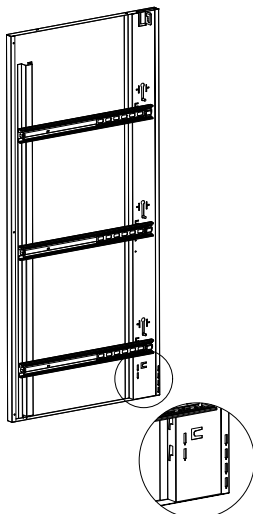


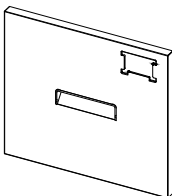
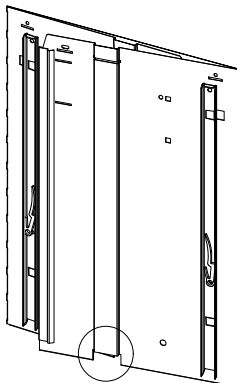

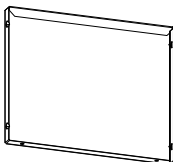
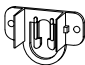



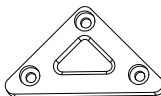

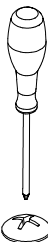


+

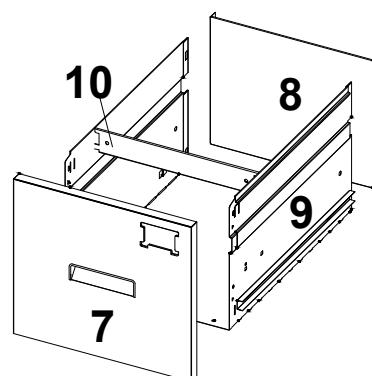
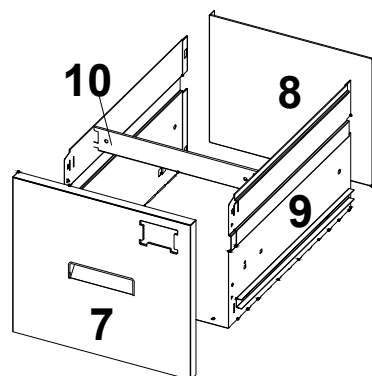
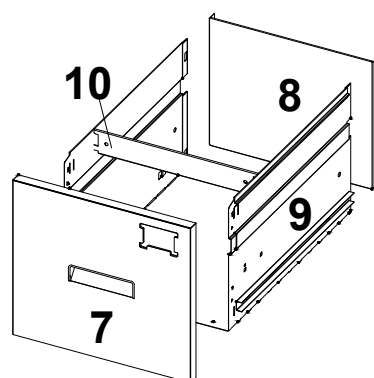
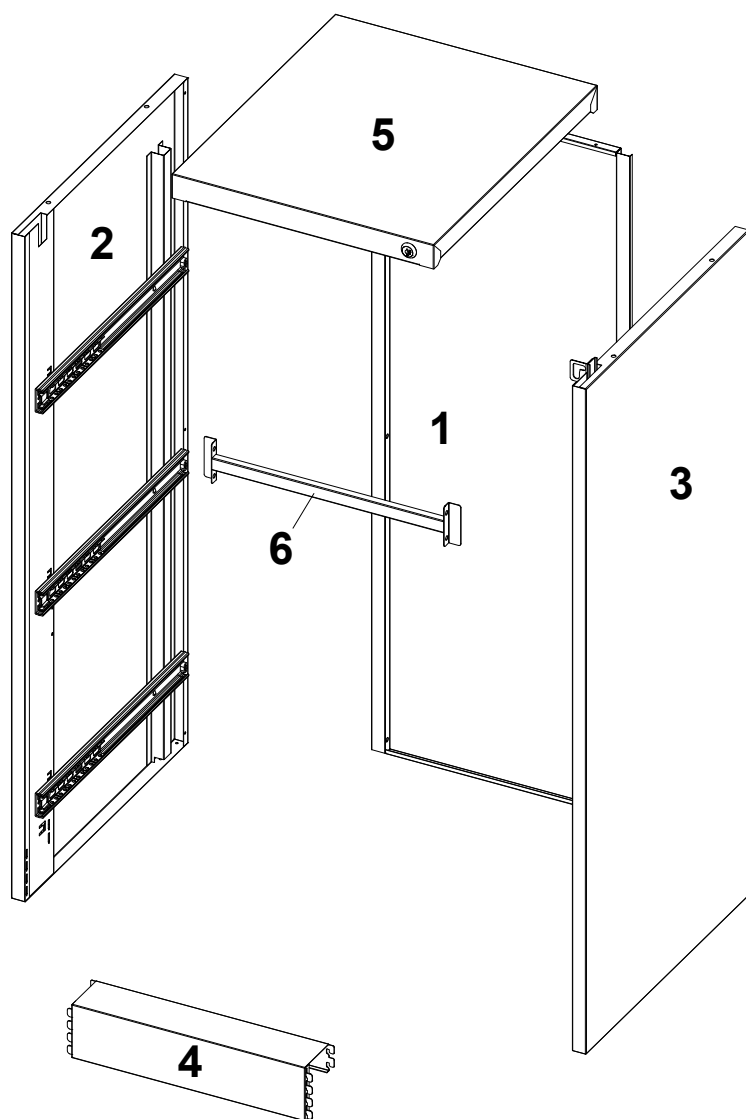


**TOOLS
REQUIRED**

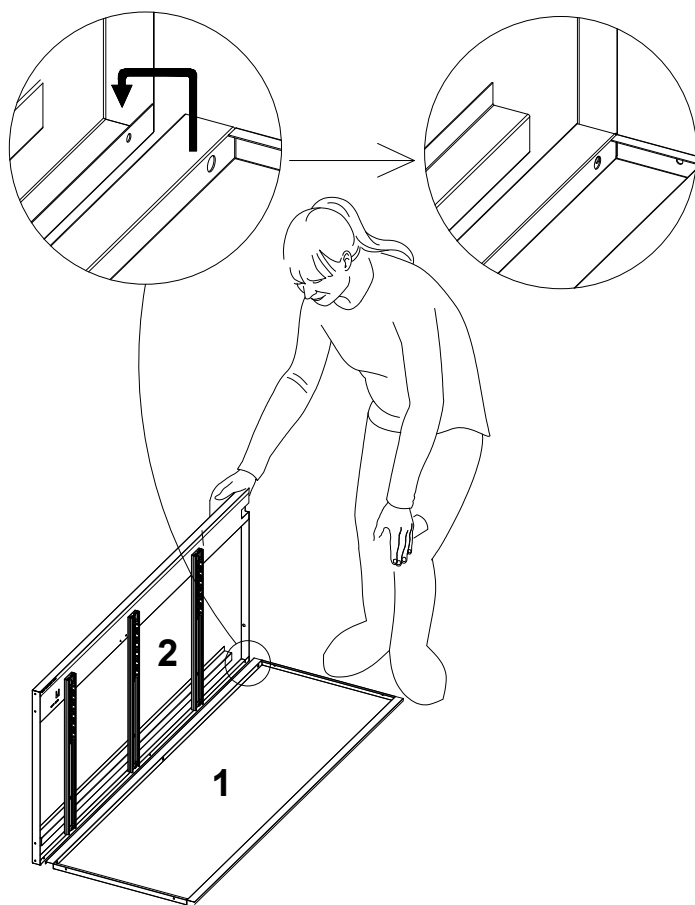


**WE ARE
GLAD TO
HELP**

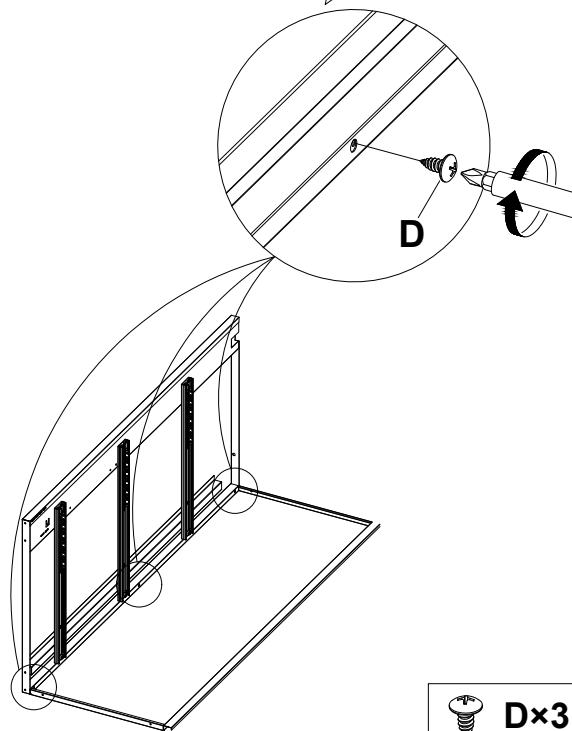
1×1 		2×1 		3×1 		4×1 	
6×1 		7×3 		9×3 			
10×3 		8×3 					
A×2 	B×4  M4× $\frac{16\text{mm}}{0.6\text{inch}}$	C×18  M4× $\frac{8\text{mm}}{0.3\text{inch}}$	D×26  M5× $\frac{12\text{mm}}{0.47\text{inch}}$	E×4 			
							



Step 1

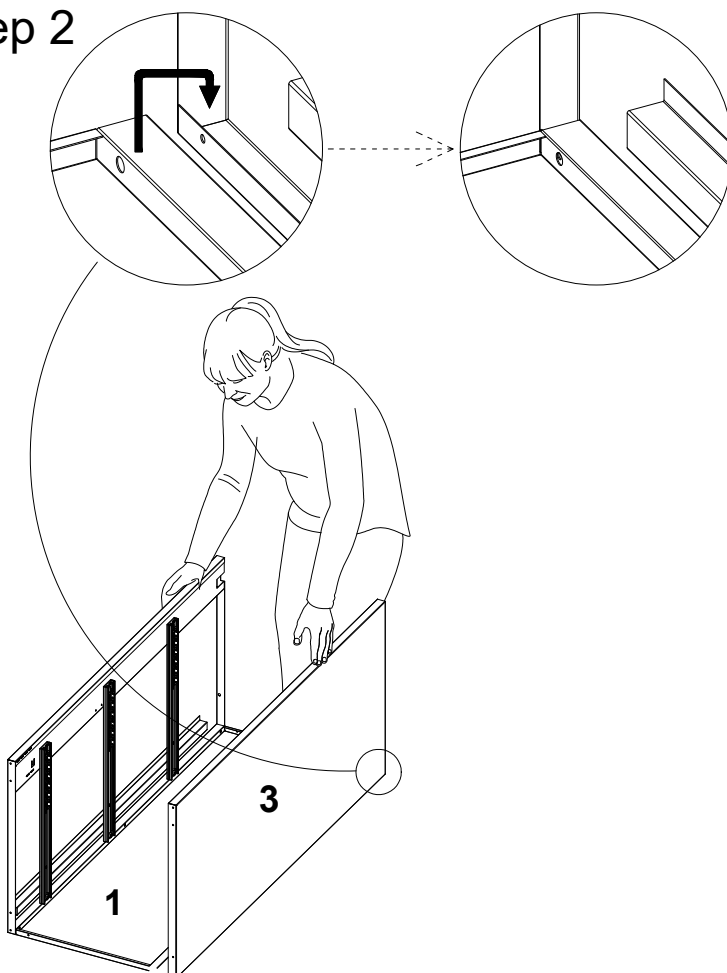


Put the hole on part 1 and part 2 in level
(please refer to the photo guide)
and connect it by D Screws

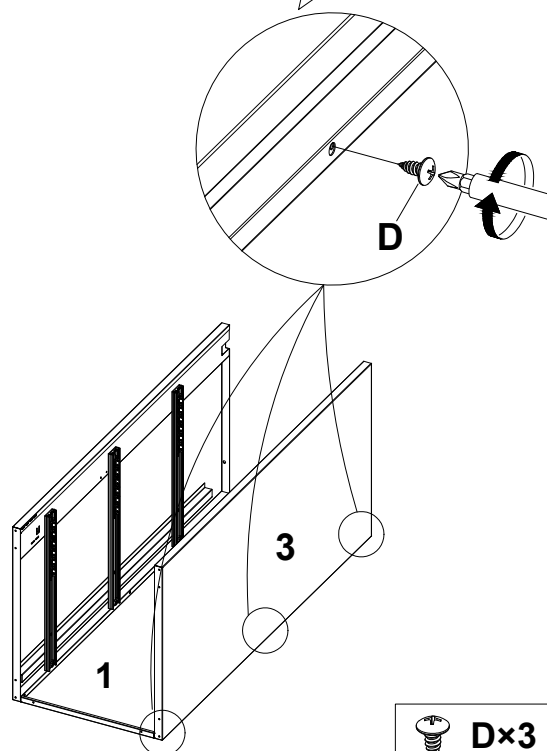


 **D×3**

Step 2



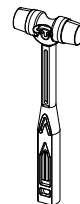
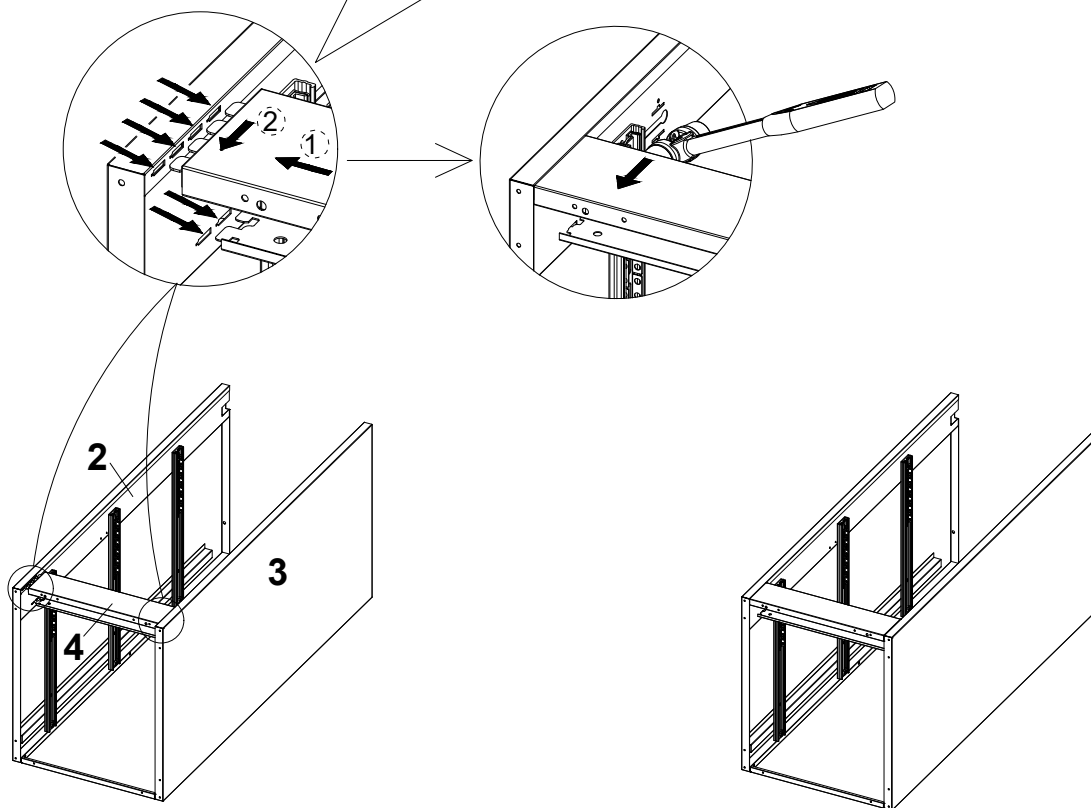
Put the hole on part 1 and part 3 in level
(please refer to the photo guide)
and connect it by D Screws



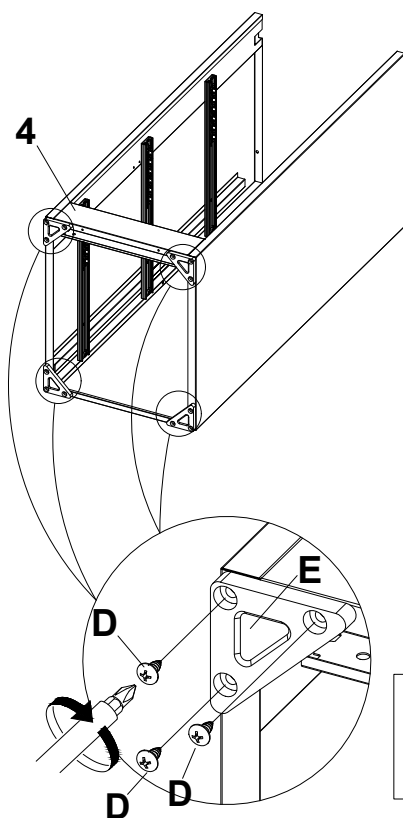
 **D×3**

Step 3

Put the tabs of part 4 into the holes of 2 and 3
Using the soft hammer to adjust it from top to down
until it is flat with the bottom of side panels



Step 4



Please fix 4 part E to the bottom 4 corners by
12 pcs D screws



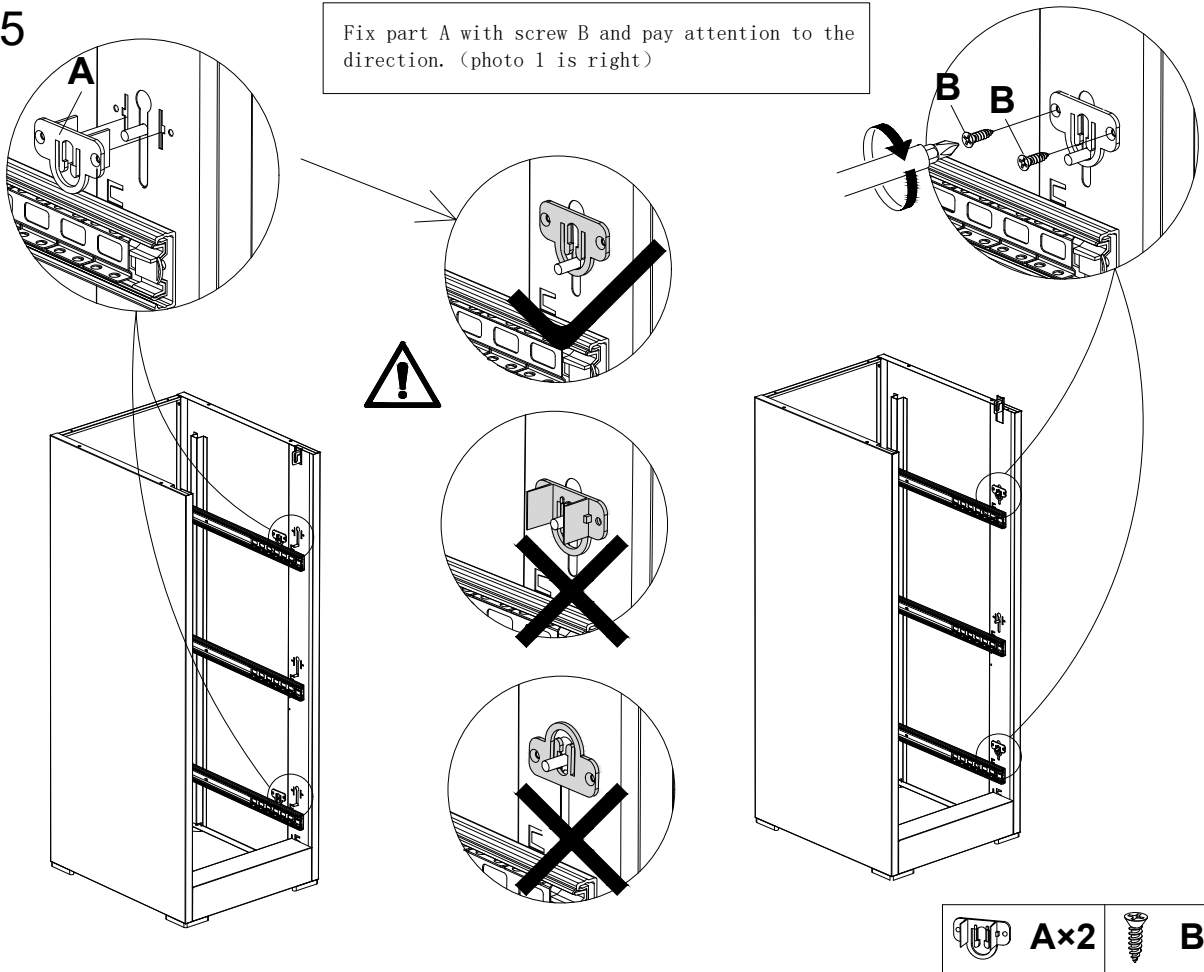
E×4



D×12

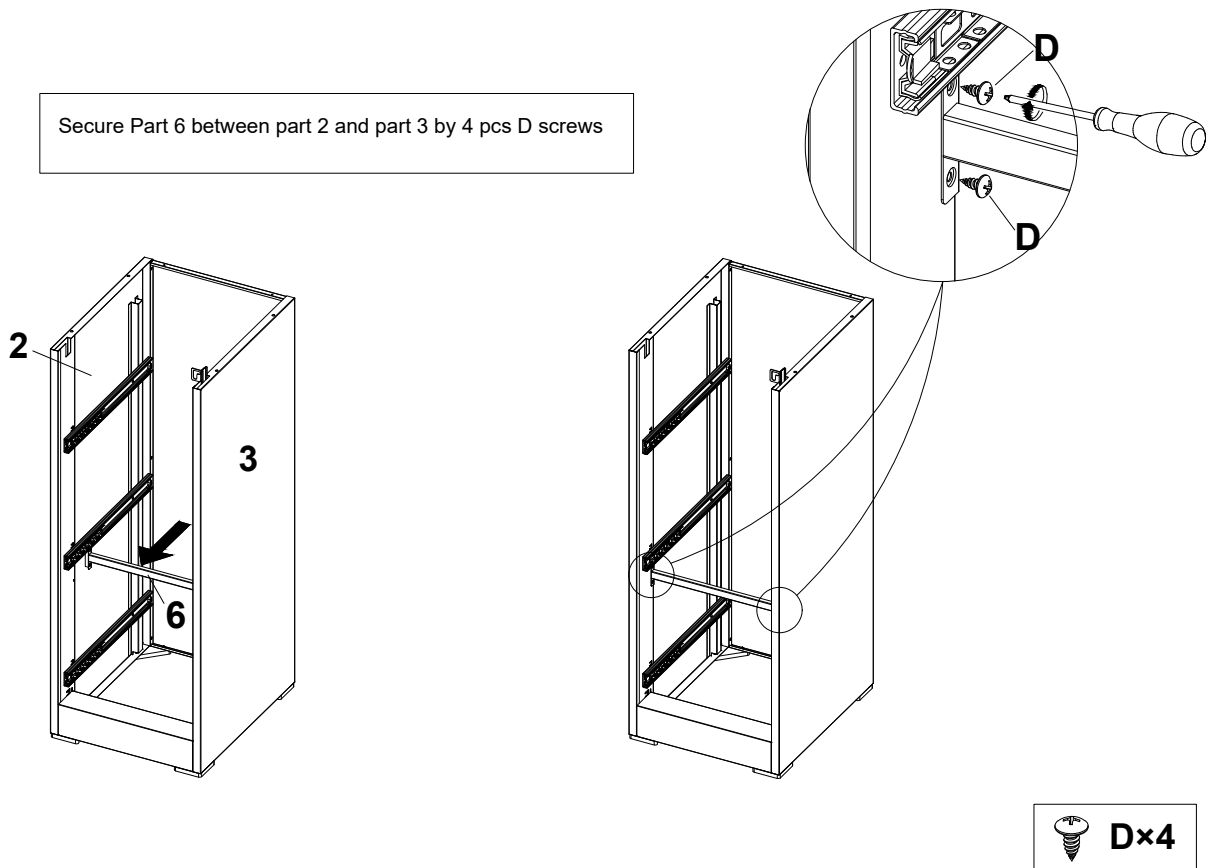
Step 5

Fix part A with screw B and pay attention to the direction. (photo 1 is right)

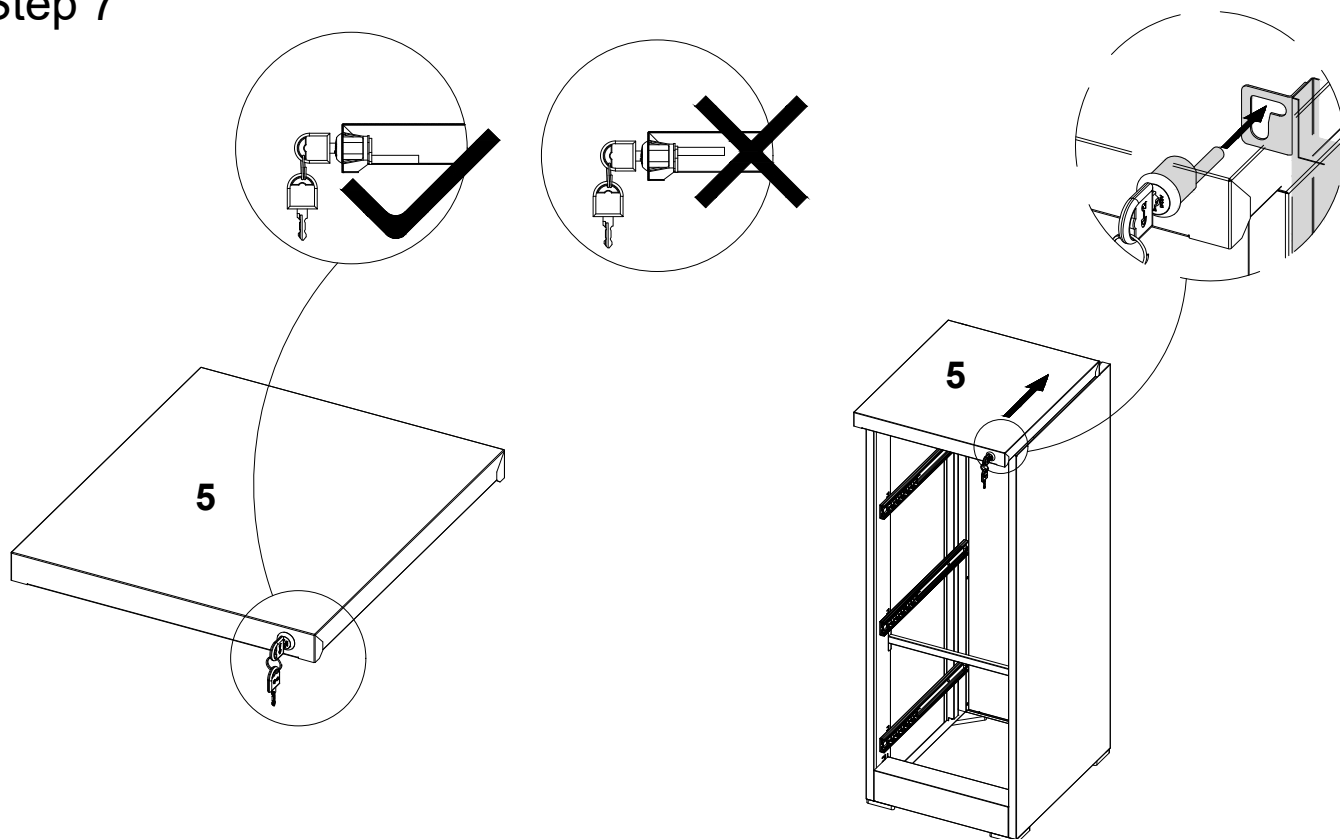


Step 6

Secure Part 6 between part 2 and part 3 by 4 pcs D screws

 **Dx4**

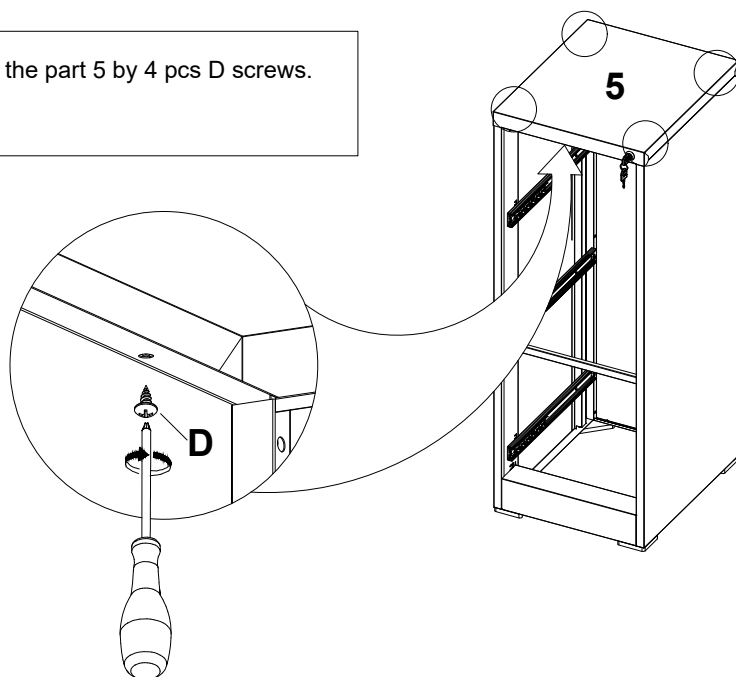
Step 7



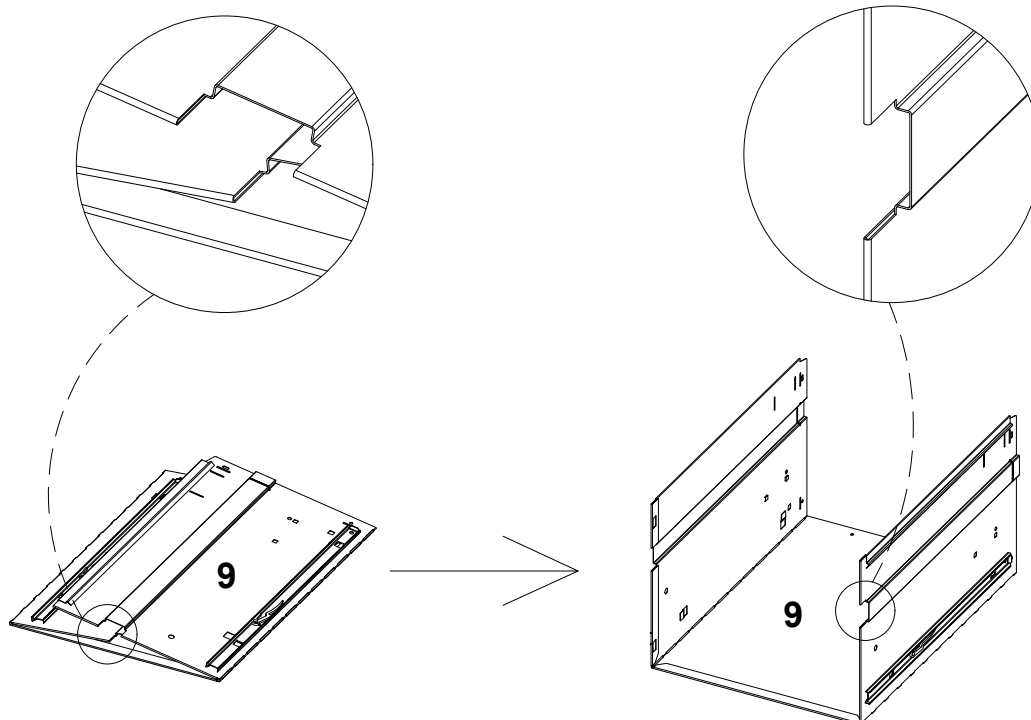
With the lock rod down (refer to the photo direction), insert part 5 to the holes of parts

Step 8

Fix the part 5 by 4 pcs D screws.

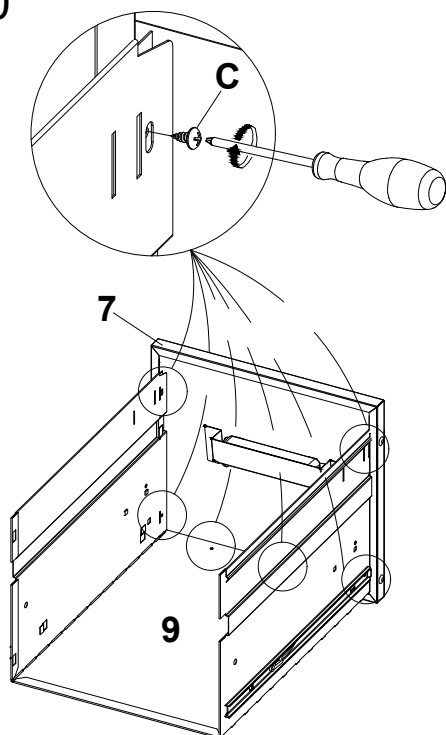


Step 9



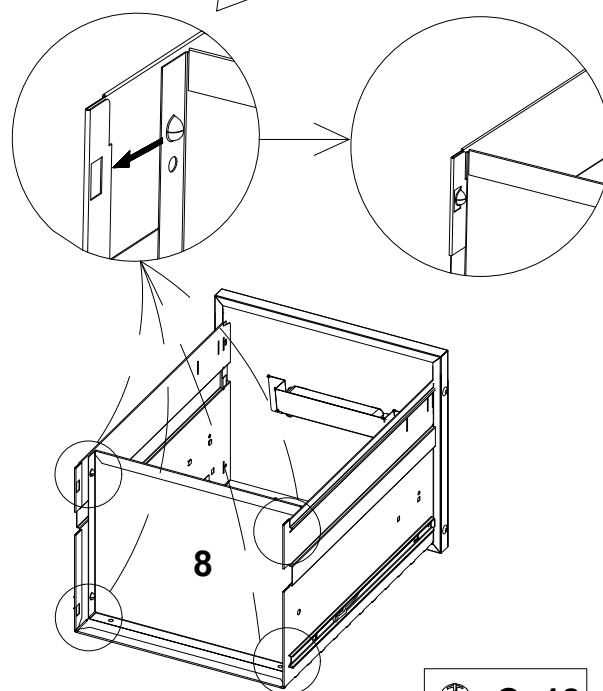
Please open part 9 and straighten the side of the part 9 (drawer)

Step 10



Connecting 7 and 9 together with 6pcs C screws.

Tap part 8 backwards until the edge protrusion snaps into the hole in part 9



 **C×18**

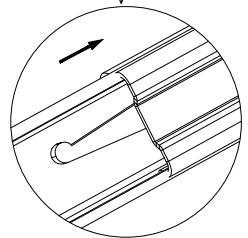
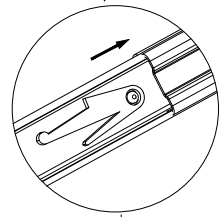
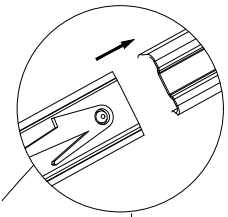
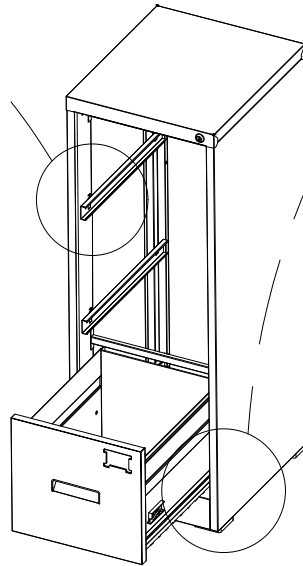
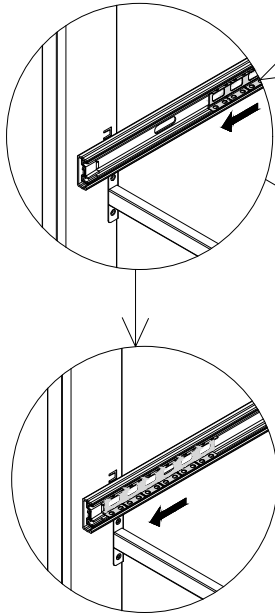
Step 11

STP1

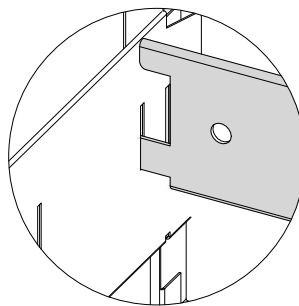
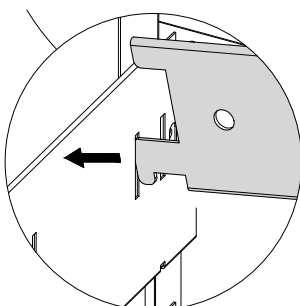
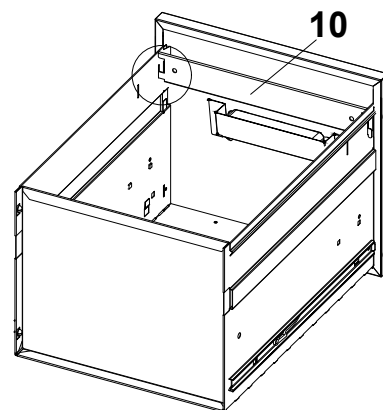
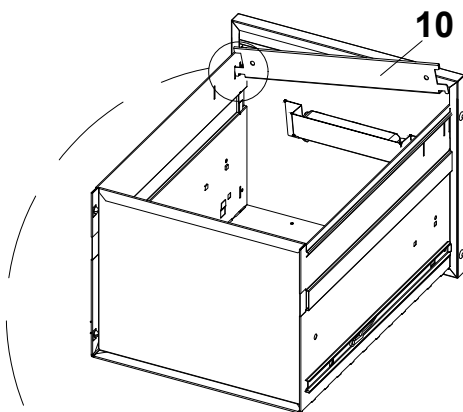
Most important step:A
Slide the steel ball to the
front of the outside of
cabinet firstly

STP2

B: Insert the inner rails on both sides of
the drawer into the outer rails on both sides
of the cabinet at the same time. Two people
lay the drawer flat and pull it in and out slowly.
After pulling it to the end and out slowly twice,
the slide track works normally. If it works failed,
please follow the slide track removal
instructions, open it and reinstall it.



Step 12



Step 13

