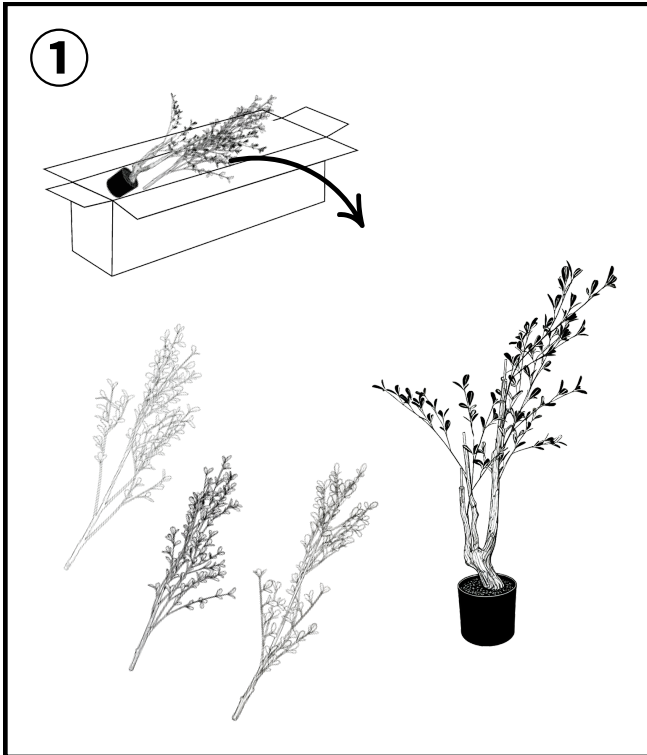
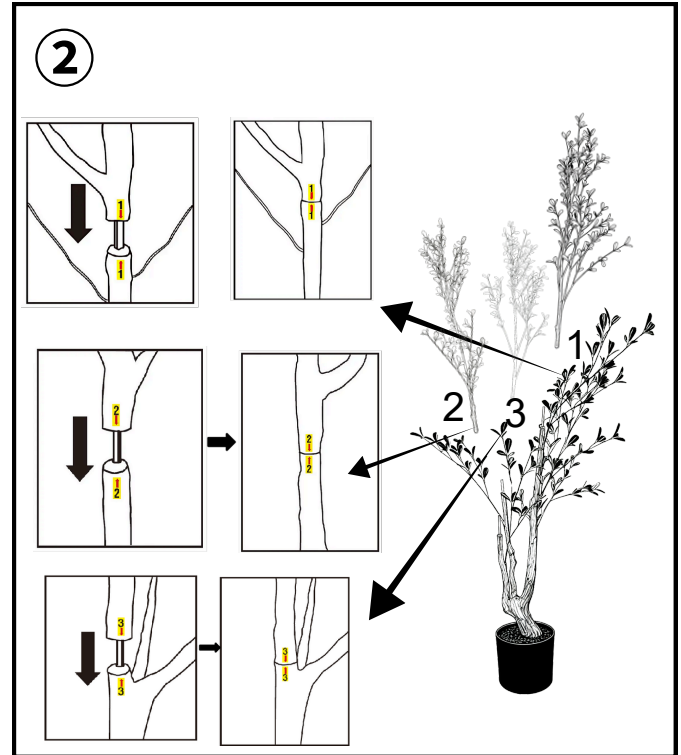


User Guide

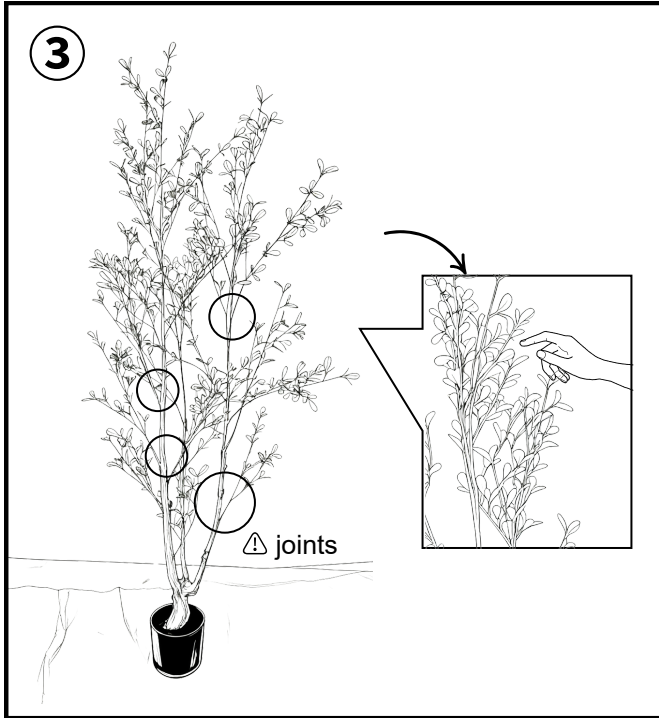
25STP532007-KD



Step1: Remove the plants from the boxes.



Step2: Remove the protective cover and assemble the tree according to the matching numbers on the branches.



Step3: Gently separate and fluff the leaves to achieve the desired fullness.

⚠ **Avoid bending the joints marked with circles in the image to prevent breakage.**

Care & Maintenance

✗ Please Avoid

- Do not put hot items directly on the plant surface.
- Do not clean with harsh cleansers or polish.
- Do not place under direct sunlight.
- Do not place near heating or cooling vents.

✓ Recommended Care

- For indoor use only.
- Move plants regularly to prevent uneven fading.
- Use a feather duster gently through foliage to remove dust.
- For stains, wipe with a mixture of white vinegar or mild soap and a damp cloth. (For silk plants, only use a silk plant cleaner – no water, soap, or vinegar).
- Remove dust and spills with a clean, non-colored, lint-free cloth.