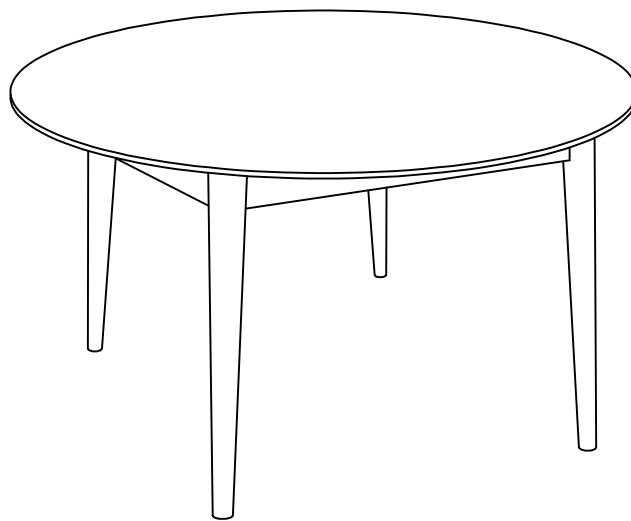



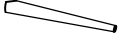
Thank you for purchasing this quality product. Be sure to check all packing material carefully for small parts, which may come loose inside the carton during shipment . Please identify and count all parts and compare with the HARDWARE LIST below.




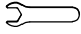
Caution : Please read instructions carefully before unpacking assembly parts. Sharp , exposed staples can cause injury , therefore , for your protection , please remove any exposed staples used in packing.

*** Retain the Allen key for regular maintenance. We recommend tightening all screws every three months to ensure continued stability and performance. ***

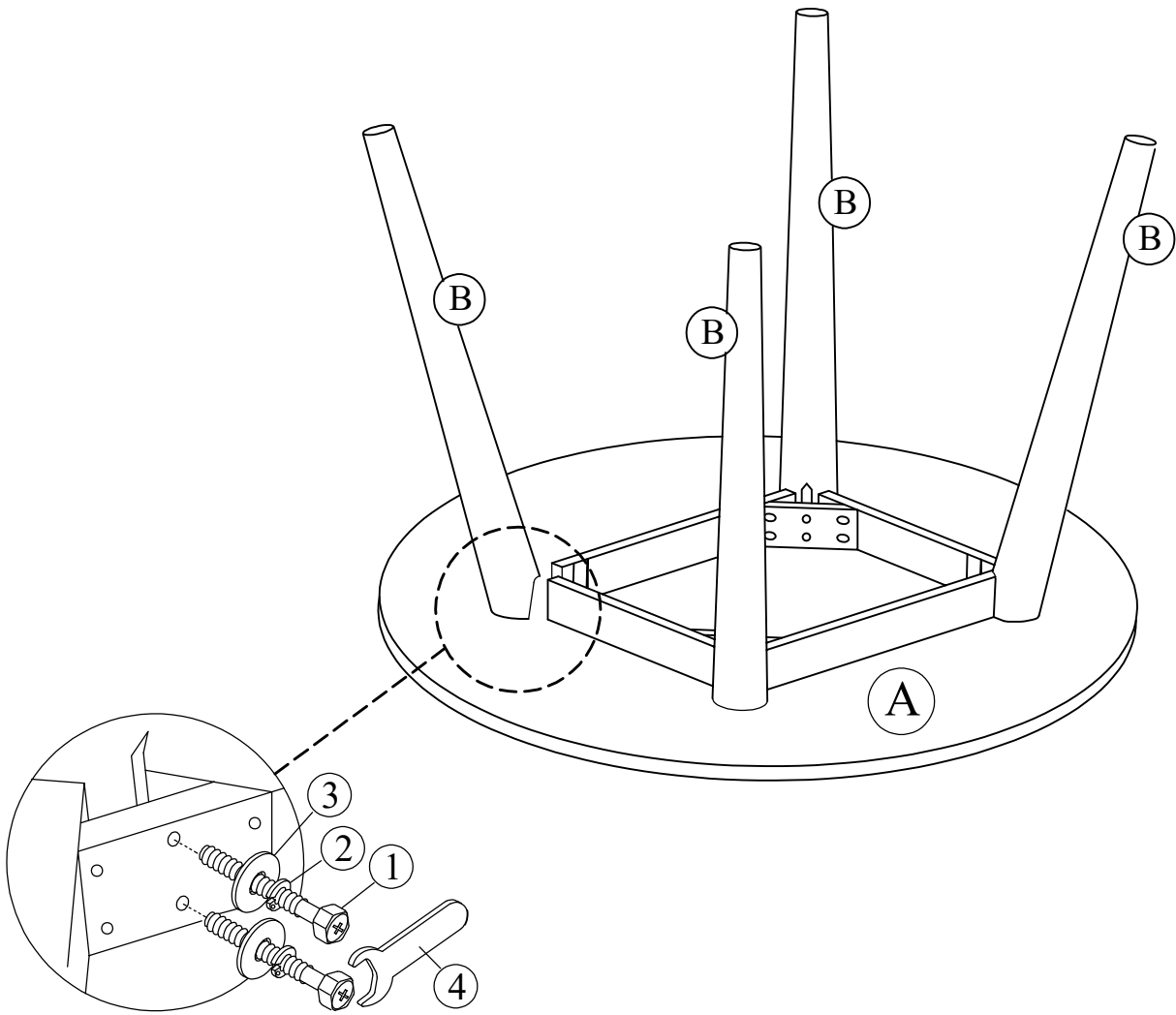
1. We recommend to assemble this product with the assistance of another person. This will provide a smooth assembly process , and can help eliminate self injuries or damage to the product during assembly.
2. Please do not over tighten screws or bolt until the assembly is completed.
3. Please put all parts on a smooth , flat surface before assembly , and carefully follow the assembly steps to assemble your newly purchased correctly and efficiently.



PARTS LIST		
NO.	COMPONENT	QTY.
A	Table Top 	1 pc
B	Table Leg 	4 pcs

HARDWARE LIST		
NO.	COMPONENT	QTY.
1	Hex Bolt 5/16" x 2 1/2" 	8 pcs
2	Spring Washer 	8 pcs
3	Flat Washer 	8 pcs
4	Wrench 	1 pc

Step 1



Position the Table Leg (B) against the corner of the table apron. Insert 8pcs Hex bolts (1) , 8pcs Spring Washers (2) and 8pcs Flat Washers (3) using Wrench (4). Fully tighten all the bolt securely.

