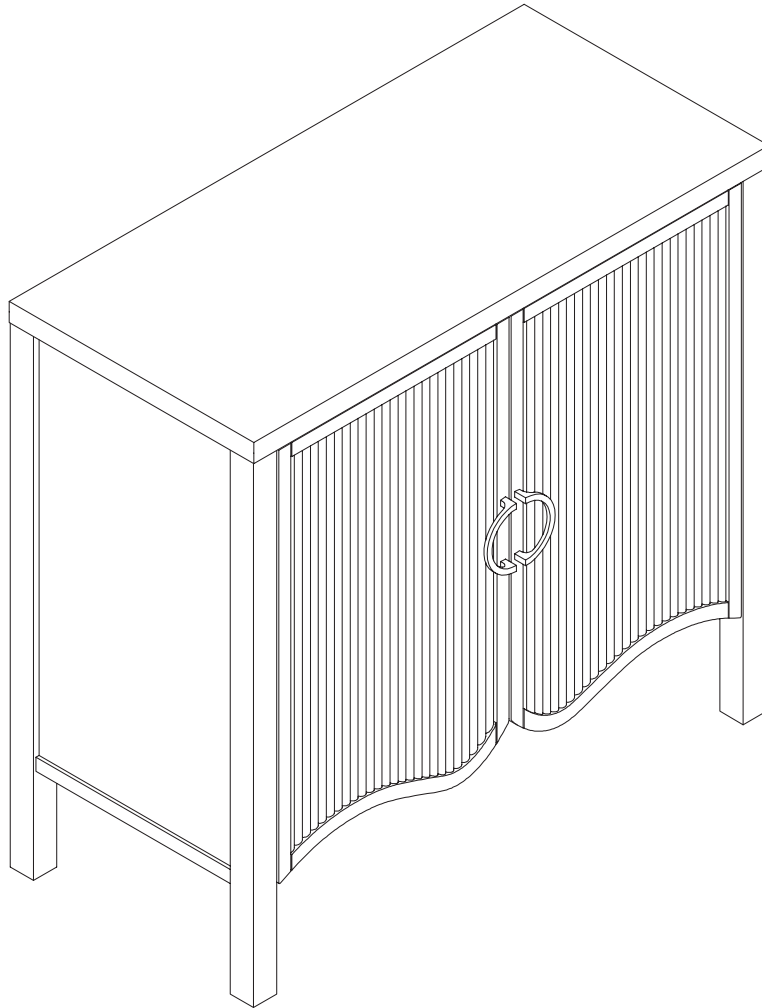


Let's build the

Scott Storage Cabinet

SKU 32410



Scan me!

Free Lifetime
Guarantee

 **nathan james**

25-0825-VN

Ok, let's get rolling

This should be easy, just follow our instructions and you will be back to Netflix in no time.

Estimated time for assembly



75:00

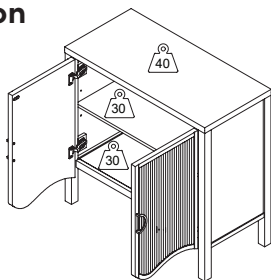
What you need

- Some of your favourite bubbly or your preferred relaxant
- Use the packaging carton as a working surface to prevent product damage during assembly
- Phillips head screwdriver
- Drill
- 1/4" Drill Bit

Weight Limitation



100
lbs



Toll-free at 1-866-619-1004
Help@nathanjames.com
Nathanjames.com/help

What's included

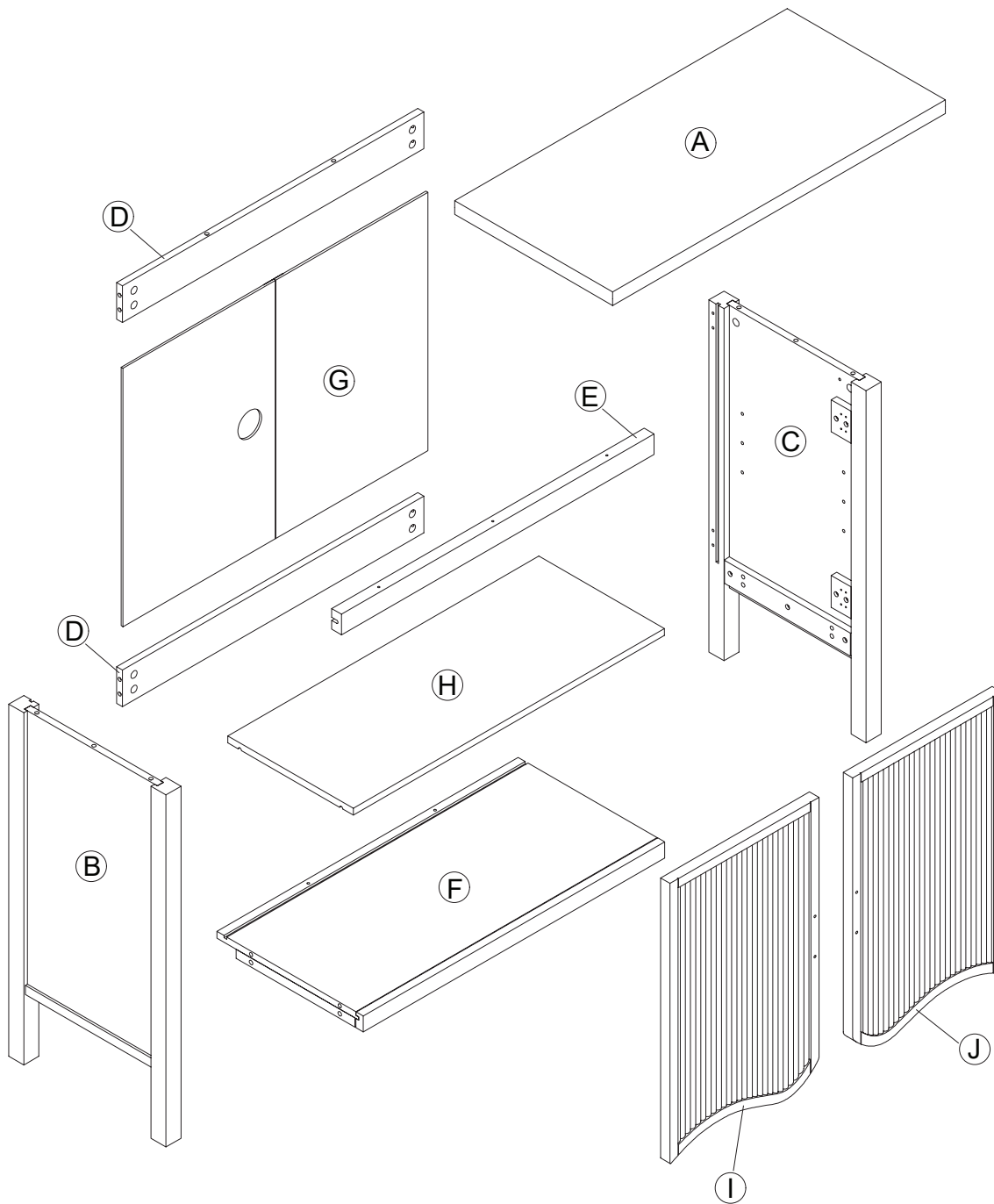
Description	Qty
A Top Panel	1
B Side Panel (Left)	1
C Side Panel (Right)	1
D Back Stretcher	2
E Font Stretcher	1
F Bottom Panel	1
G Back Panel	1
H Adjustable Shelf	1
I Door (Left)	1
J Door (Right)	1

Scan me!

Free Lifetime
Guarantee



The goods



IMPORTANT

1. Do not tighten bolts / screws completely until all bolts / screws are lined up and inserted into holes.
2. Do not over tighten screws and bolts to avoid stripping.
3. Please use hand tools to assemble this product.

What's included

	Description	Qty
1	M6 x 35mm Cam Bolt	18
2	15 x 9.5mm Cam Lock (Extra 1pc)	19
3	M8 x 30mm Wooden Dowel (Extra 1pc)	7
4	Ø1/4 x 32mm Bolt	4
5	Ø1/4 x 16mm Flat Washer	4
6	M3 x 15mm Screw	2
7	Magnetic Door Catch	1
8	Hinge	4
9	M4 x 19mm Screw	24
10	Shelf Pin	4
11	Allen Key	1
12	M4 x 40mm Screw	3
13	Ø5/32 x 28mm Bolt	4
14	Handle	2
15	M3 x 12mm Screw	2
16	Metal Catch Plate	2
17	M3.5 x 15mm Screw (for Anti-Tip Kit)	2
18	Plastic Bracket (for Anti-Tip Kit)	2
19	Plastic Tether (for Anti-Tip Kit)	1
20	Wall Anchor (for Anti Tip Kit)	2
21	M4 x 35mm Screw (for Anti-Tip Kit)	2

1



2



3



4



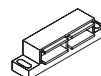
5



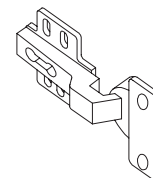
6



7



8



9



10



11



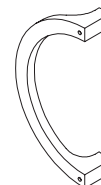
12



13



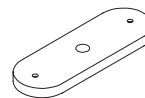
14



15



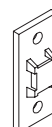
16



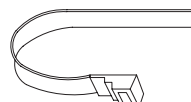
17



18



19



20



21



Step 1

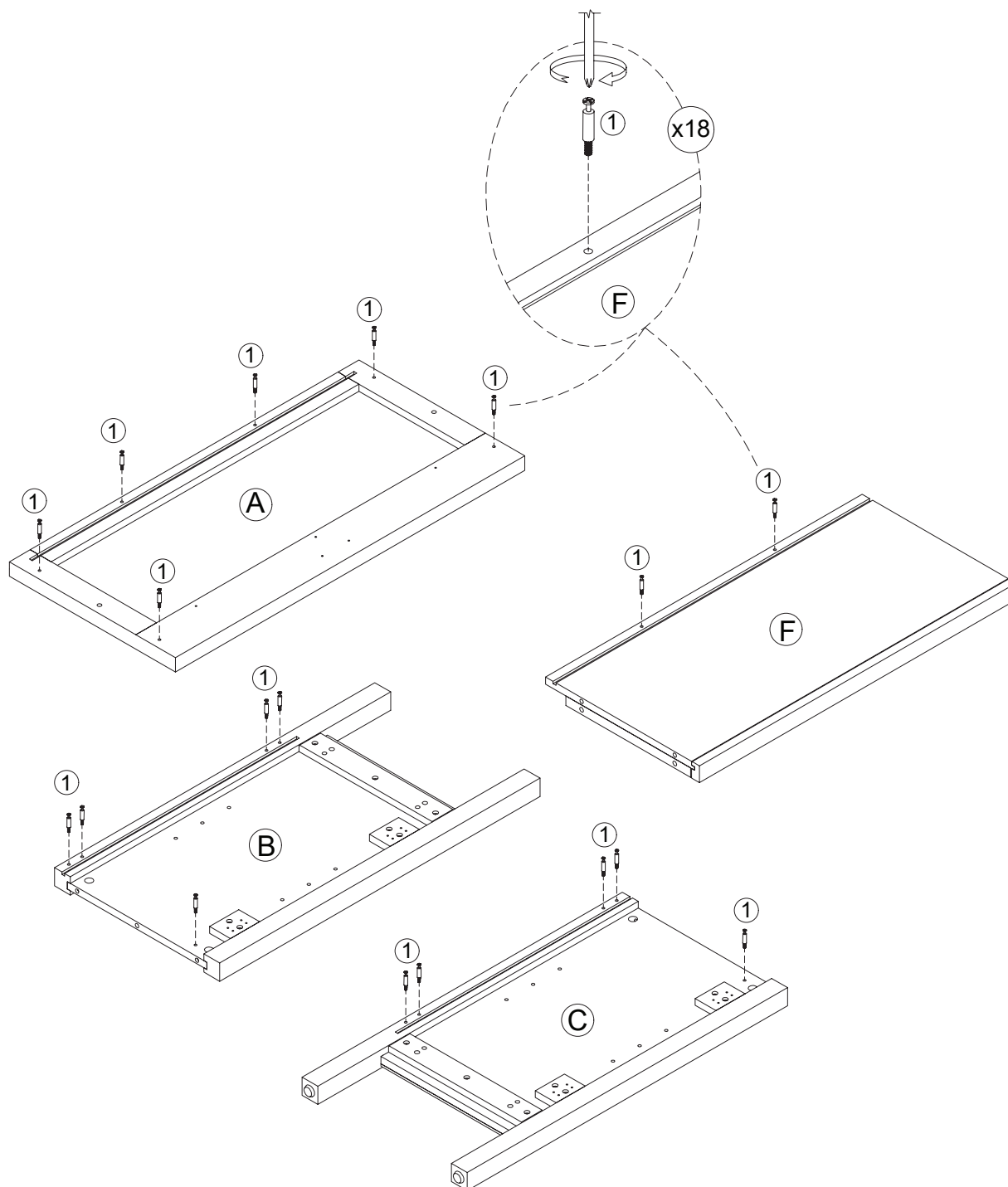
Let's get this thing fired up! Start by putting Cam Bolts (1) into the Top Panel (A), Side Panel Left (B), Side Panel Right (C), and Bottom Panel (F), in the holes indicated below.



1



x 18pcs



Step 2

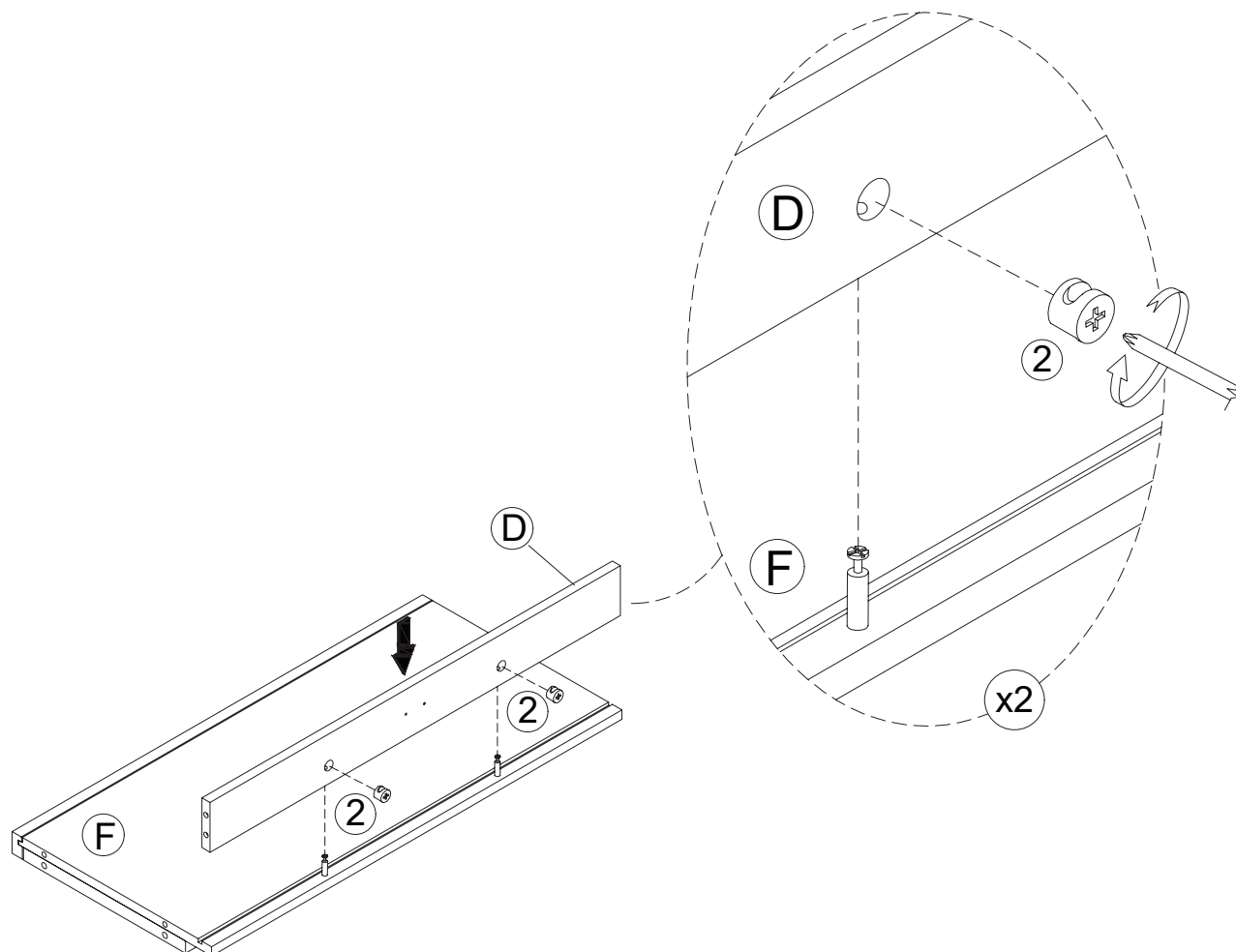
Next, grab the Back Stretcher (D) and attach them to the Bottom Panel (F) using the Cam Locks (2). You're doing awesome!



2



x 2pcs



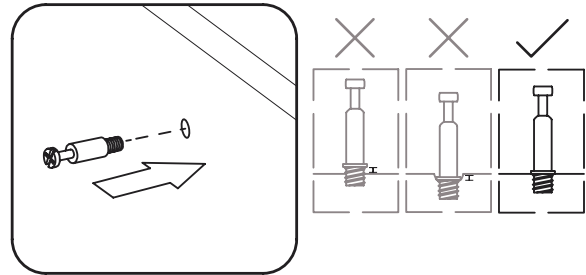
How to use cam locks

Did you know?

Cam locks are used to join two panels together, usually the edge of one to the flat side of another.

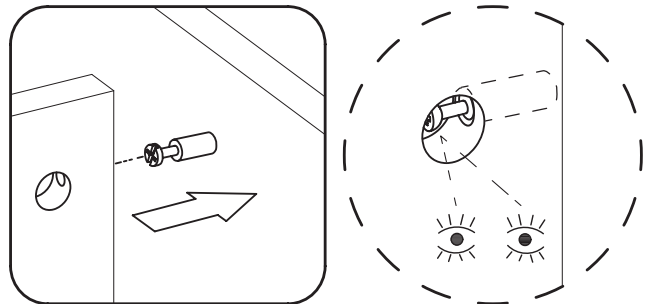
First, your cam bolt (or cam pin) will need to be properly inserted into the flat side of the board.

Important Note: Only tighten the cam bolt until it is secure. Do not over-tighten.



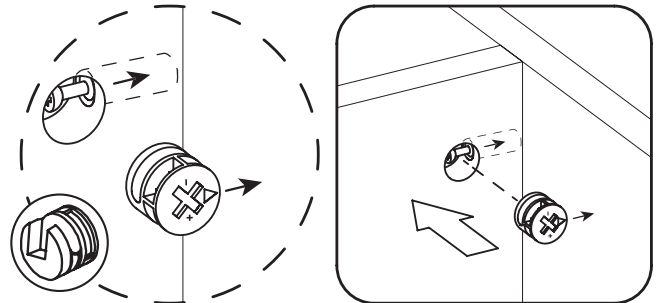
Next, you will fit the proper hole on the edge of the associated joining panel over the cam bolt.

Important Note: When installed properly, the head of the cam bolt will be visible through the larger hole on the side of the joining panel.



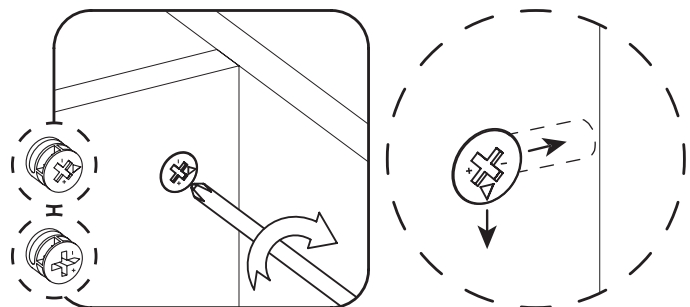
Next, you will notice the cam lock has a “C” shaped back. Commonly, an arrow on the front of the cam lock points in the same direction as the open section on back.

Using these as your cue, insert the cam lock into the large hole so the opening of the “C” fits over the head of the cam bolt.



Using a screwdriver, you will turn the cam lock until it stops, usually at 90° or 180°. You will feel the panels pulling closer until they are secured.

Important Note: Only turn the cam lock until the panels are fully engaged & feel secure. Turning too far may lead to hardware failure.



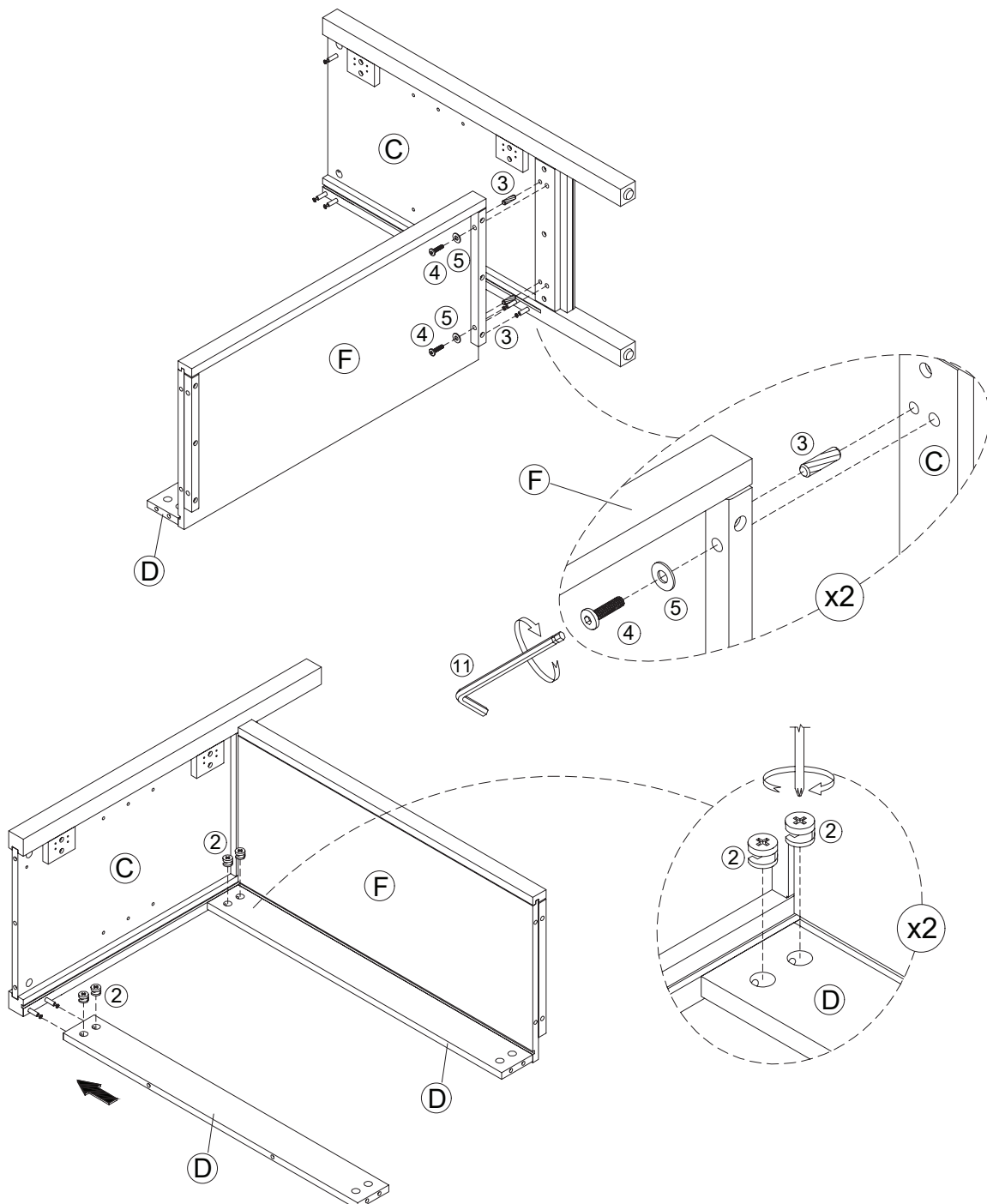
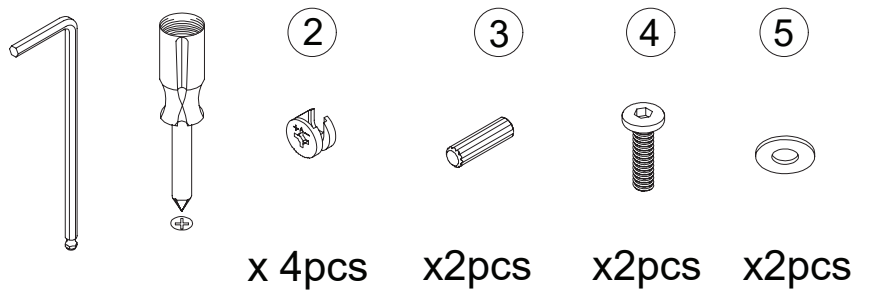
Still having issues?

If a cam lock seems to be spinning in place or is not “catching” or pulling the panels together as expected, first remove the cam lock & try again while making sure that everything is properly positioned & oriented.

If you are still having issues getting things working as expected, first remove the cam lock then unscrew the cam bolt slightly (less than 1 complete turn) to see if that helps with the alignment of the cam lock & bolt.

Now, insert the Wooden Dowels (3) into the Side Panel (Right)(C), then attach it to the Bottom Panel (F) using the Flat Washers (5) and Bolts (4).

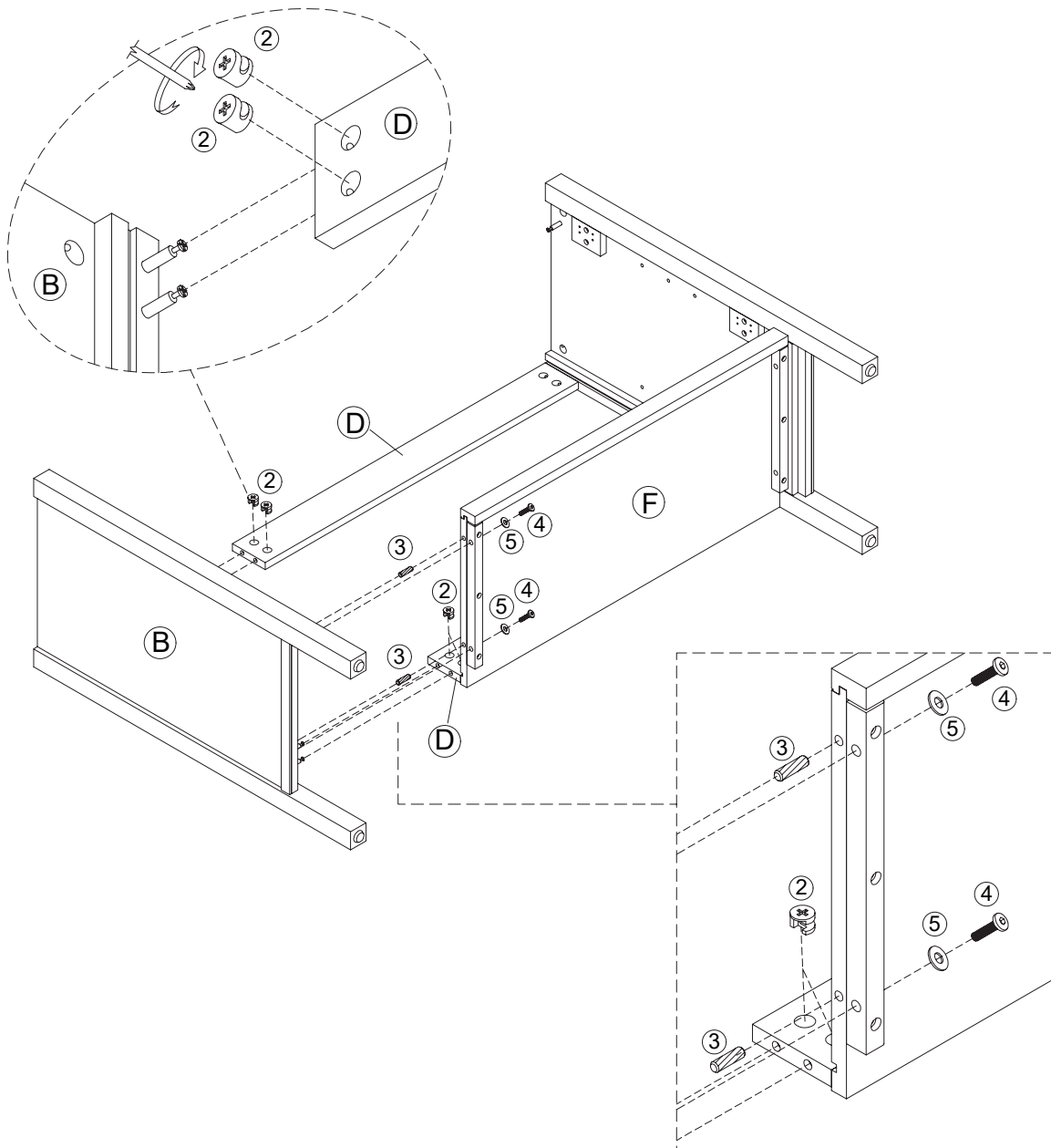
Next, grab the Back Stretcher (D) and attach them to the Right Side Panel (C) using the Cam Locks (2).



Step 4

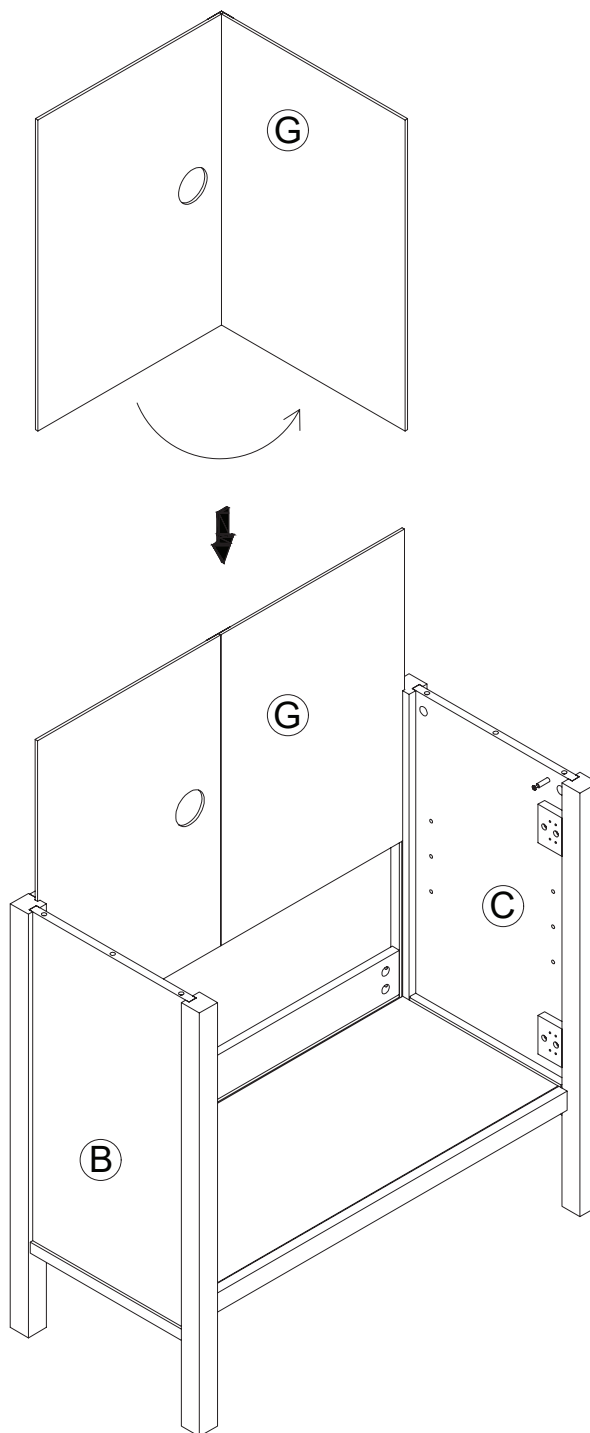
Insert the Wooden Dowels (3) into the Bottom Panel (F), then attach it to the Side Panel (Left) (B) using the Flat Washers (5) and Bolts (4).

Secure the Stretcher (D) to the Side Panel (Left) (B) using Cam Locks (2).



Step 5

Unfold the Back Panel (G) and slide it into place on the cabinet. It should fit smoothly into the grooves.



Step 6

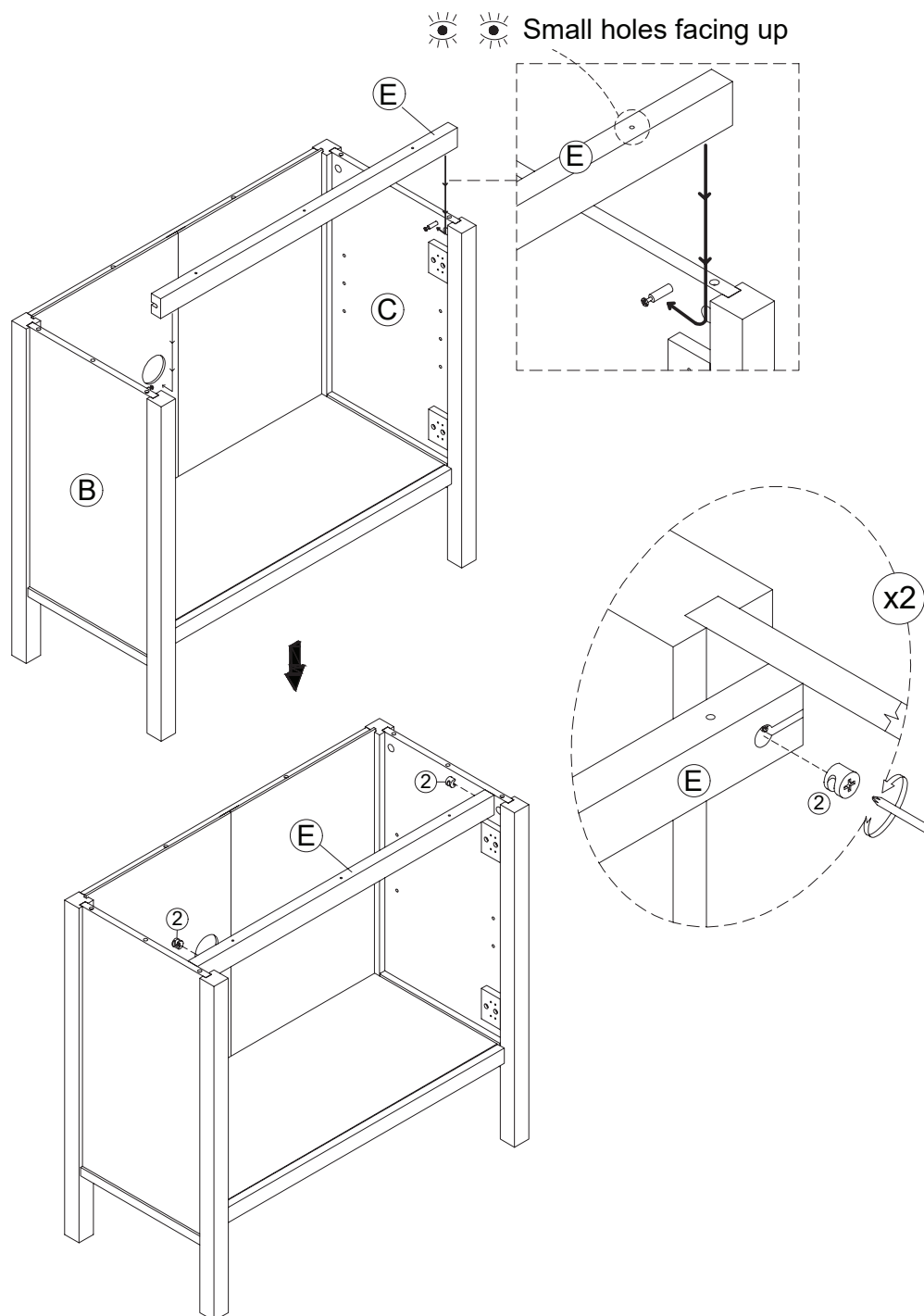
We meet again, Cam Locks! With the small holes facing up, secure the Front Stretcher (E) to the Side Panels using the Cam Locks (2).



2



x 2pcs



Step 7

Insert the Wooden Dowels (3) into the Side Panel (Right) (C) & Side Panel (Left) (B), then attach it to the Top Panel (A) using the Camlocks (2).

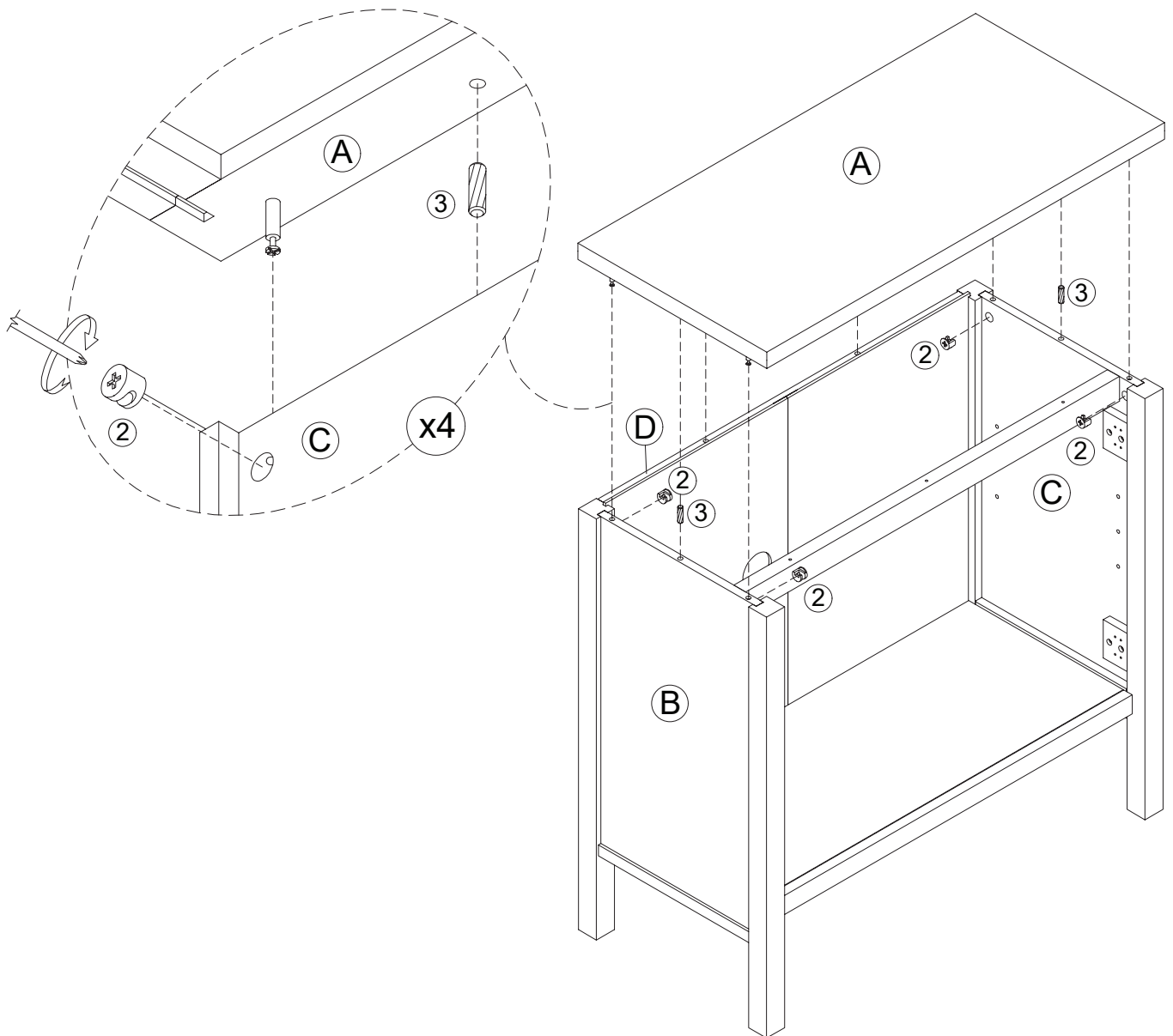


2

3

x 4pcs

x 2pcs



Step 8

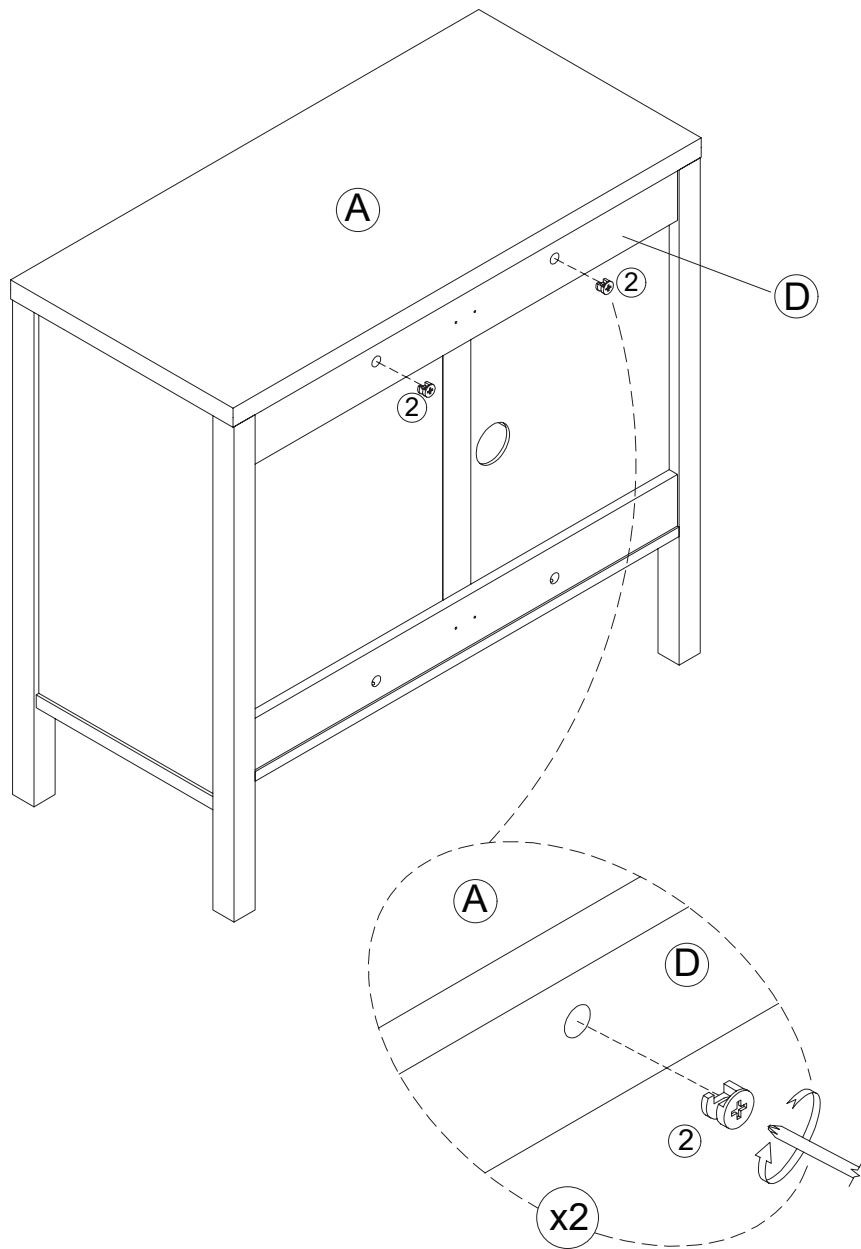
Now, lock the Back Stretcher in place using the Cam Locks (2).



2

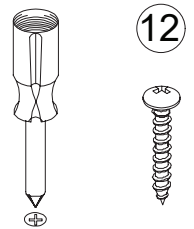


x 2pcs

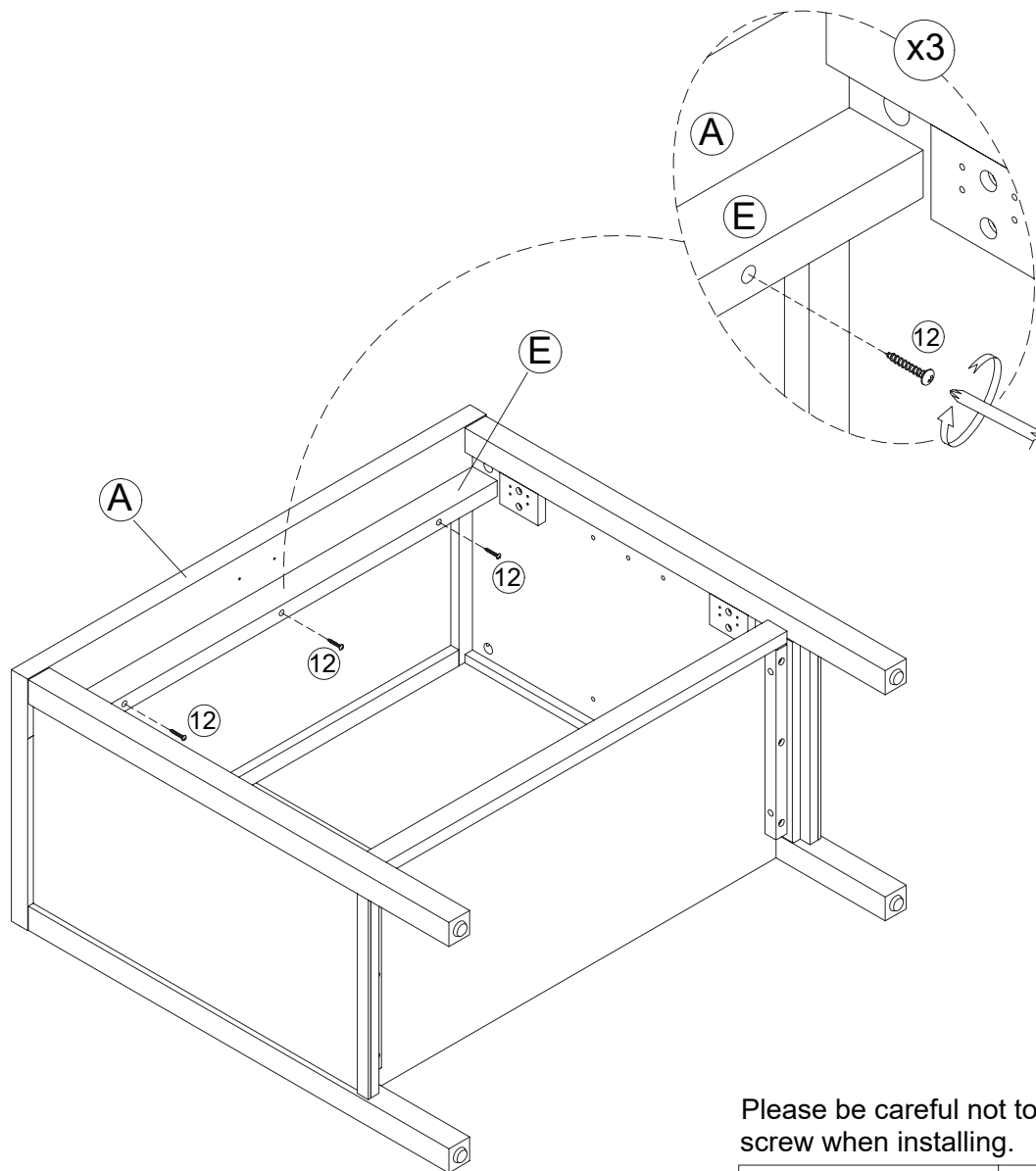


Step 9

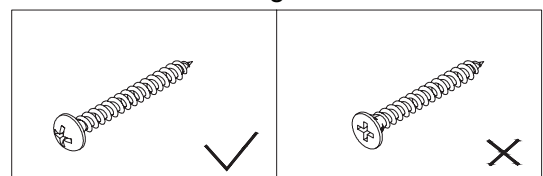
Then, insert the M4x40mm Screws (12) into the corresponding holes on the Front Stretcher (E). Use a screwdriver to tighten the screws into place.



x3pcs



Please be careful not to use the wrong screw when installing.



M4 x 40mm Screw

M4 x 35mm Screw

Step 10

Secure the Magnetic Door Catch (7) to the Top Panel (A) using the M3 x 15mm Screws (6).

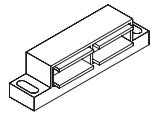


6

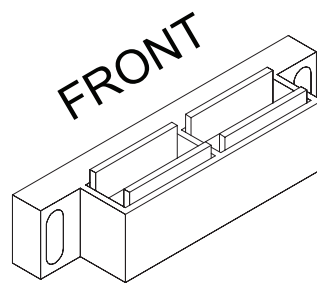
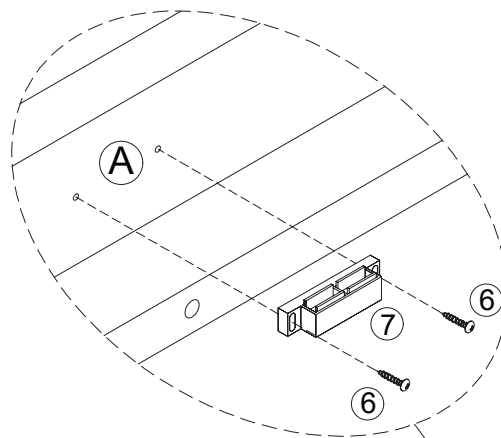


x 2pcs

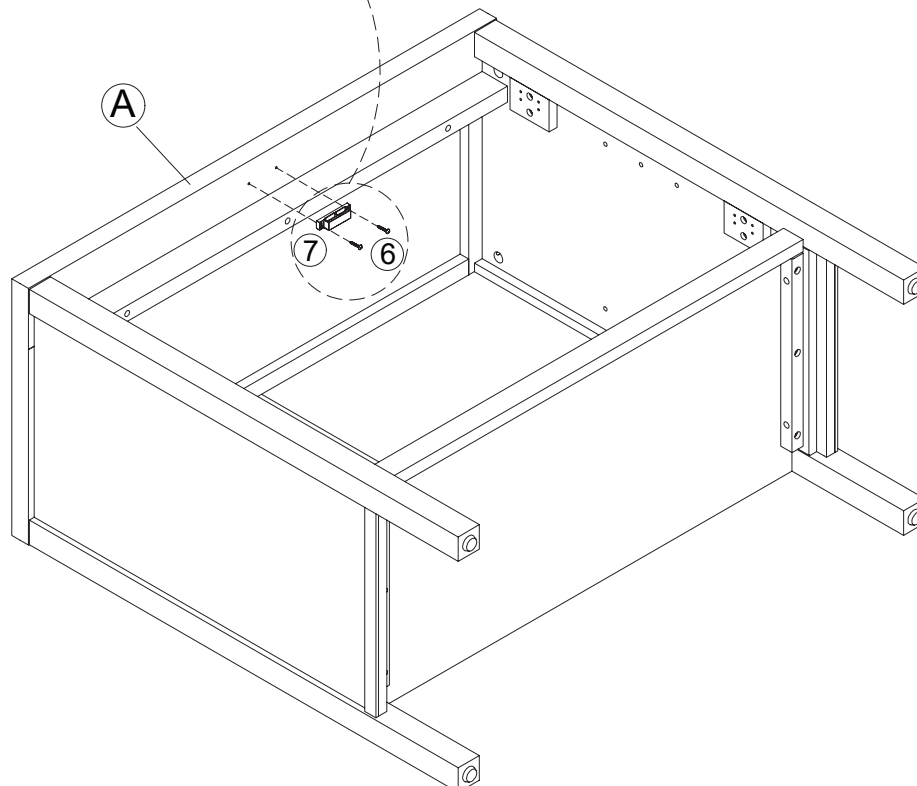
7



x 1pc

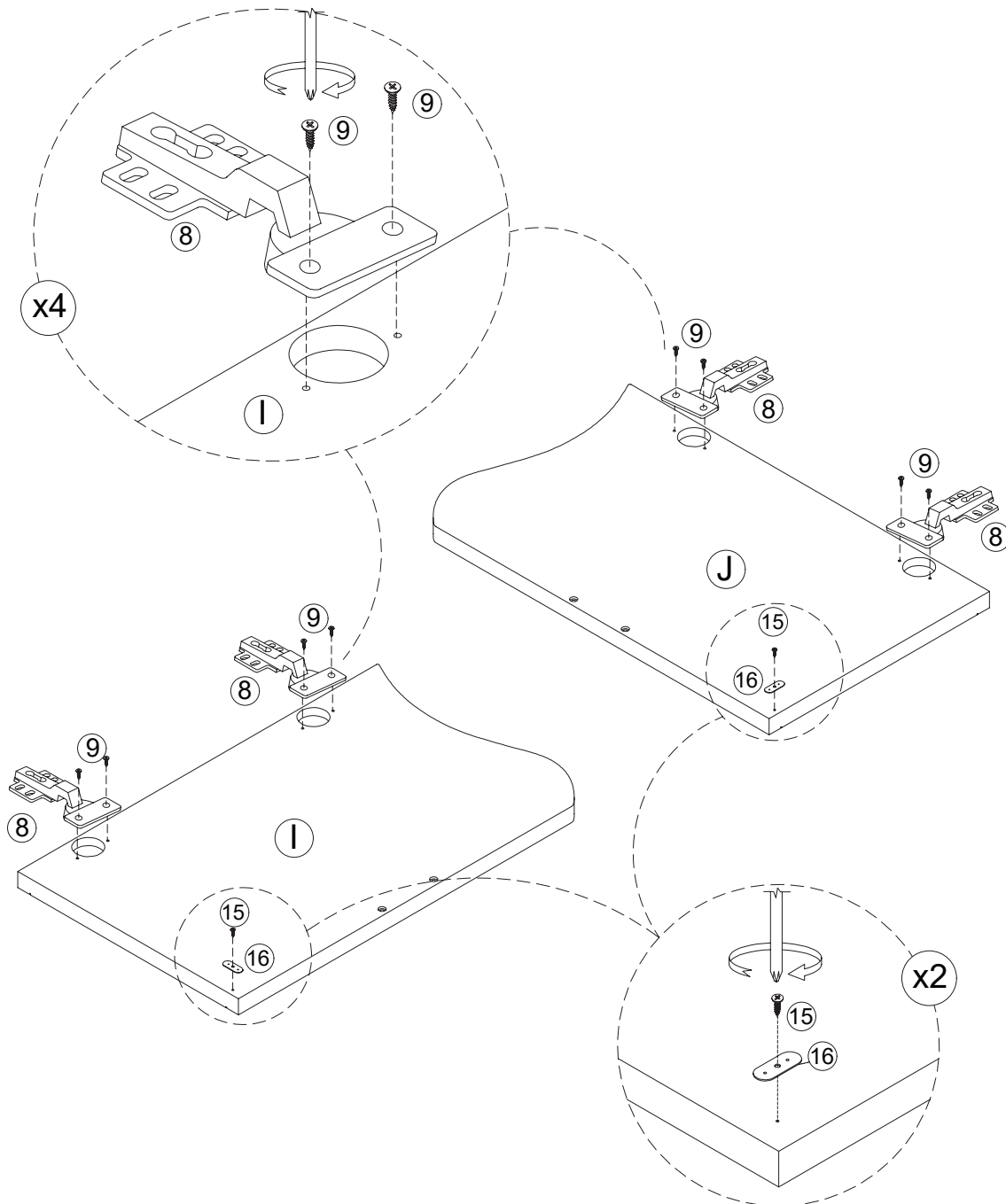
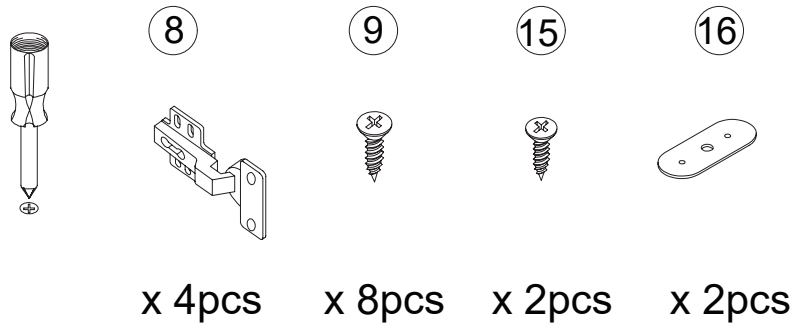


Tip! Door Catcher can be adjusted from front to back for proper door alignment.



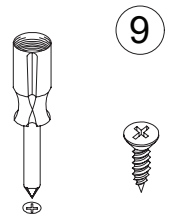
Step 11

Shut the front door - you're only five steps away from being done. Speaking of doors - grab the Left (I) and Right (J) doors and secure the four Hinges (8) onto them. Secure the Metal Catch Plate (16) to the tops of the doors, too!

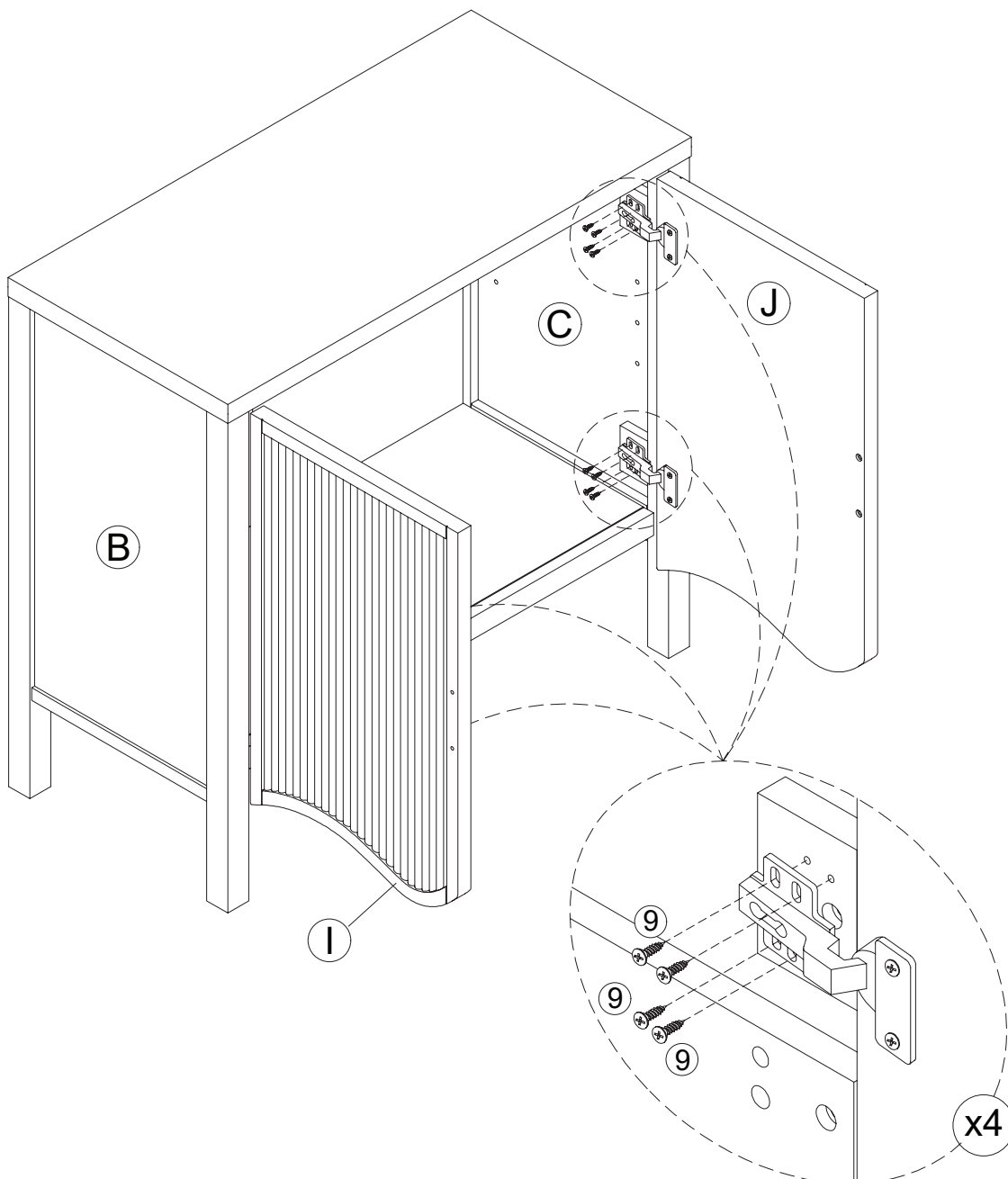


Step 12

It's all coming together! Secure the doors to the unit by the Hinges using the M4 x 19mm Screws (9).



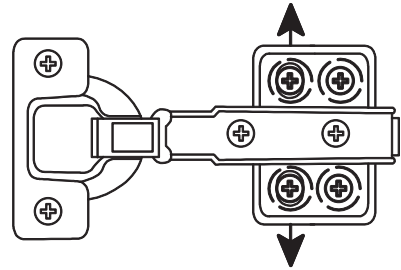
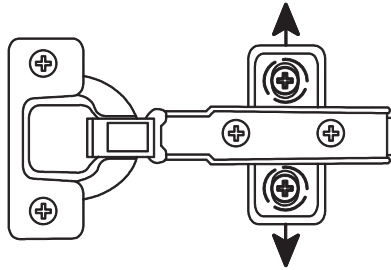
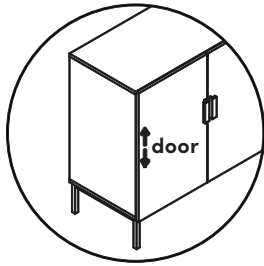
x 16pcs



Is your cabinet door looking crooked or unevenly spaced?

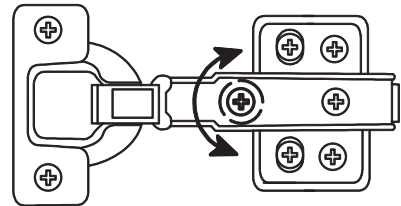
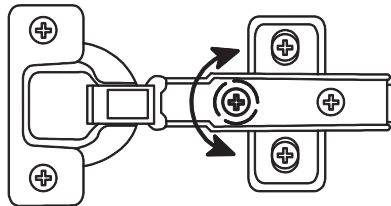
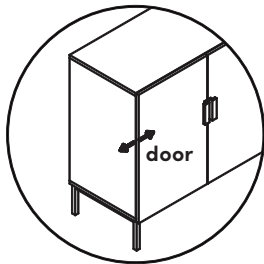
Then you've come to the right place. Follow the illustrations below to get your cabinet door aligned and ready for action.

If your door is too low or too high...



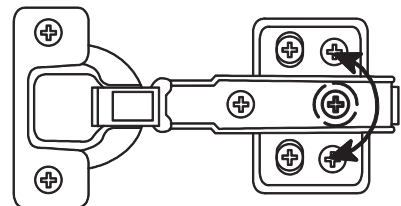
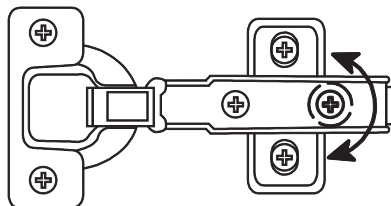
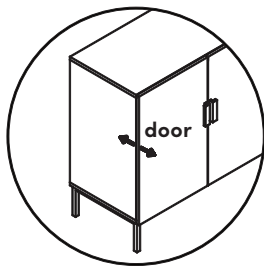
Loosen the height screws, then move the door up or down to make it level.

If the space between your doors is off...



Loosen the side-to-side screws, then screw counter-clockwise to make the gap wider or clockwise to close any gaps.

If you need to adjust the depth of the doors...



Adjust the in-and-out screws until the door is aligned with the side of the cabinet.

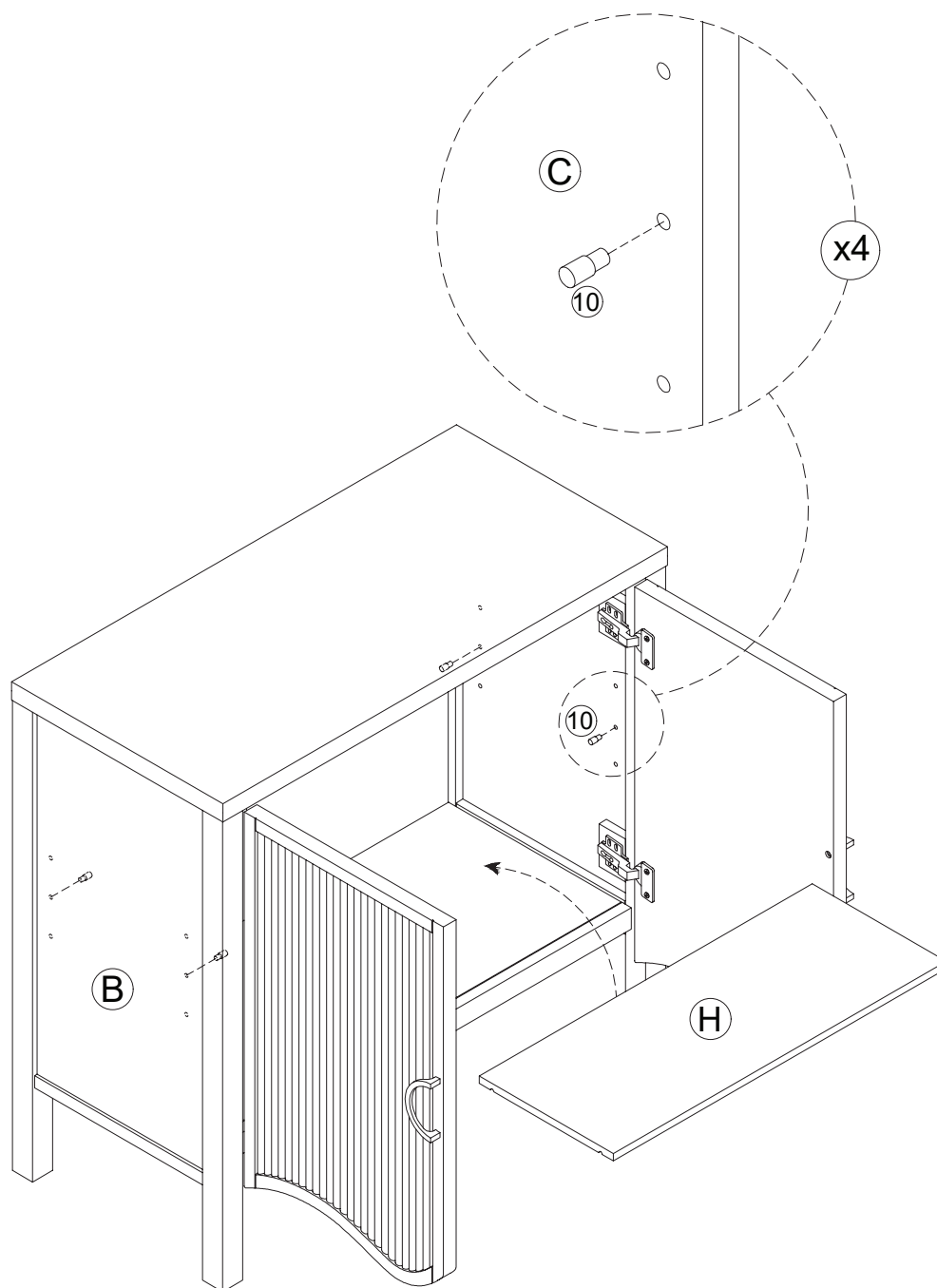
Step 13

Place the Shelf Pins (10) at your desired shelf height and carefully slide the Shelf (H) to rest on top of the pins.

10



x 4pcs



Step 14

Let's get those door handles on, and then you're just three steps away from being done!
We're sorry for keeping you from your Netflix series for so long.

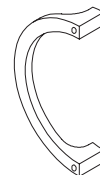


13

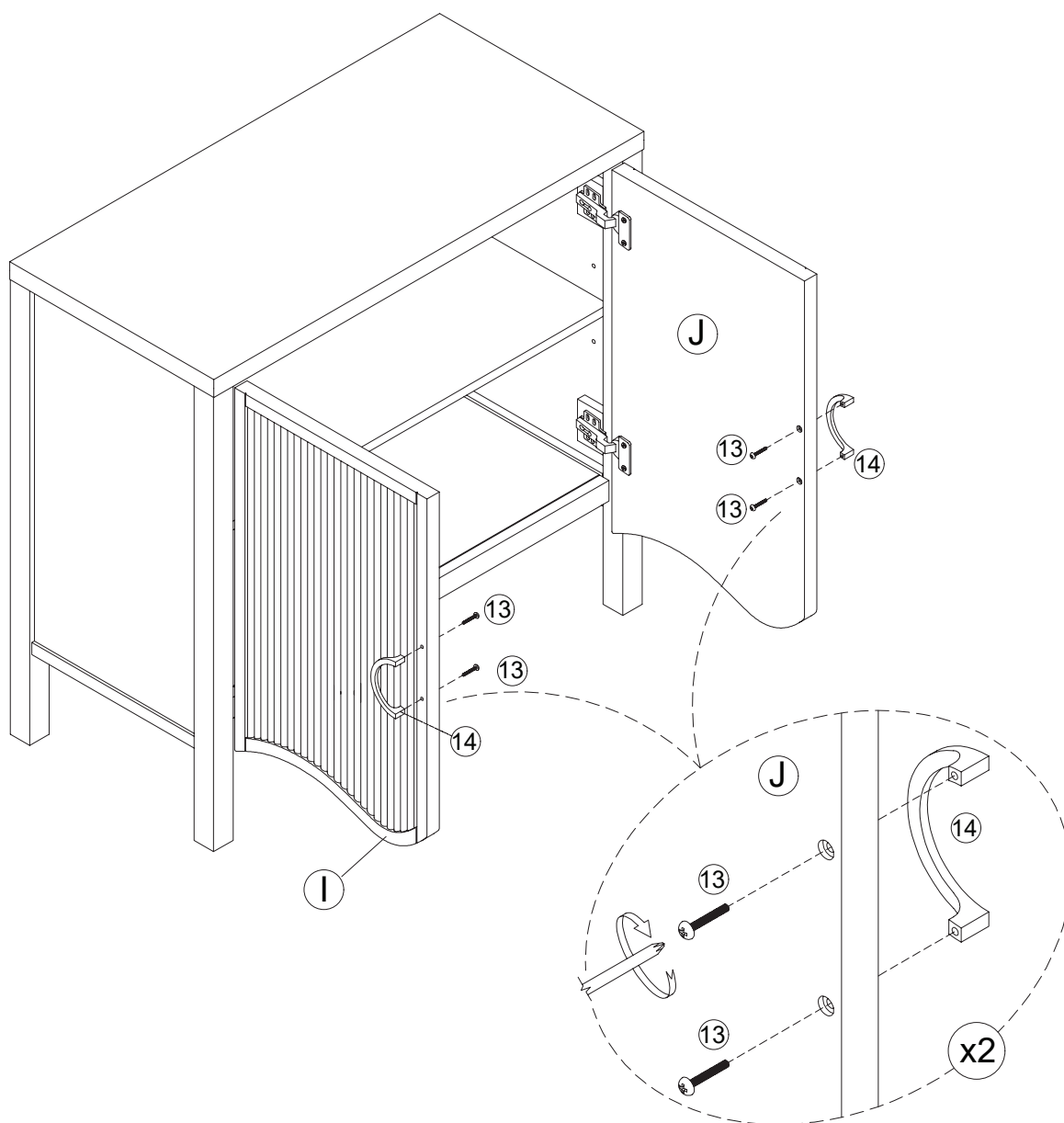


x 4pcs

14

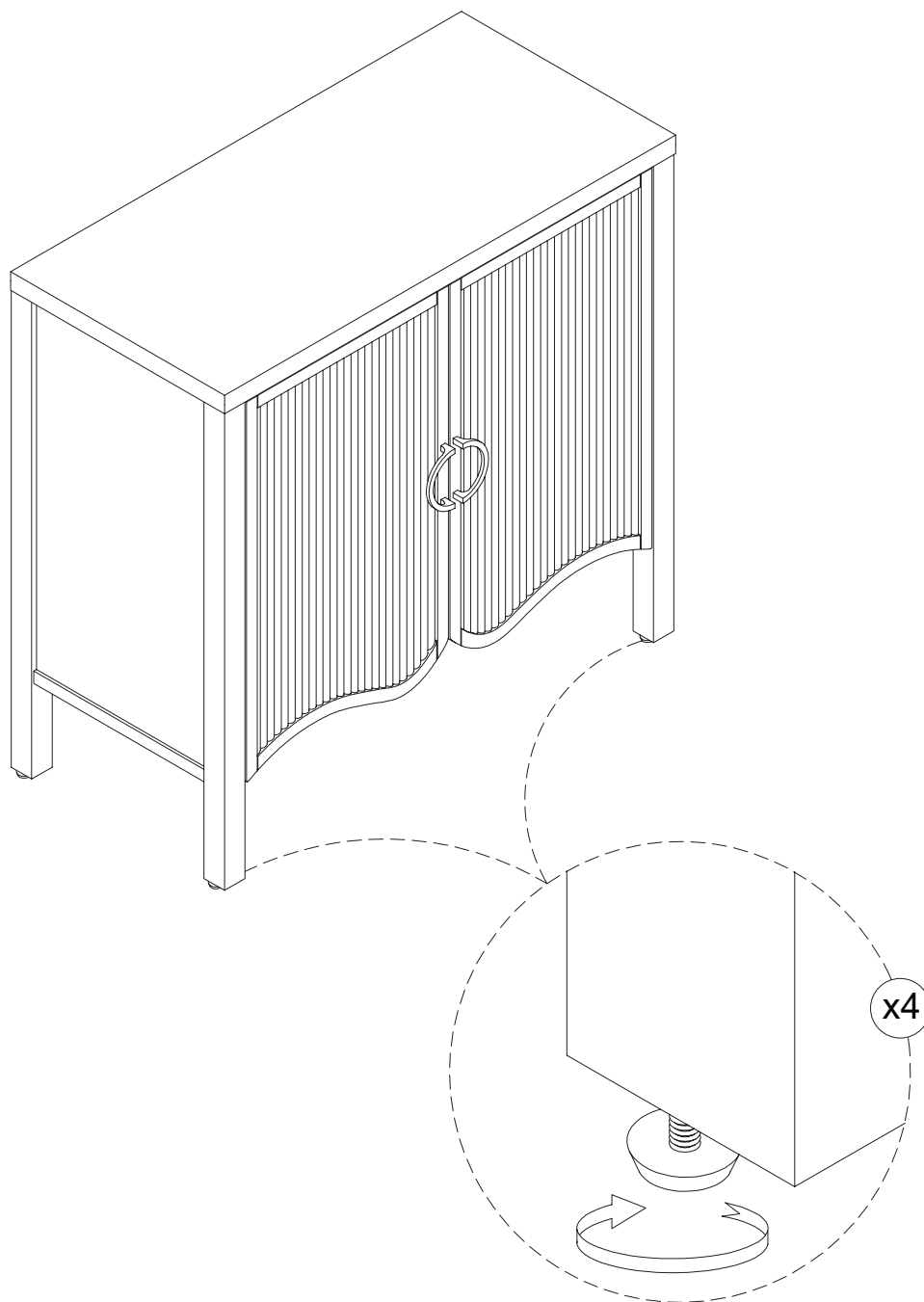


x 2pcs



Step 15

Time for the finishing details!

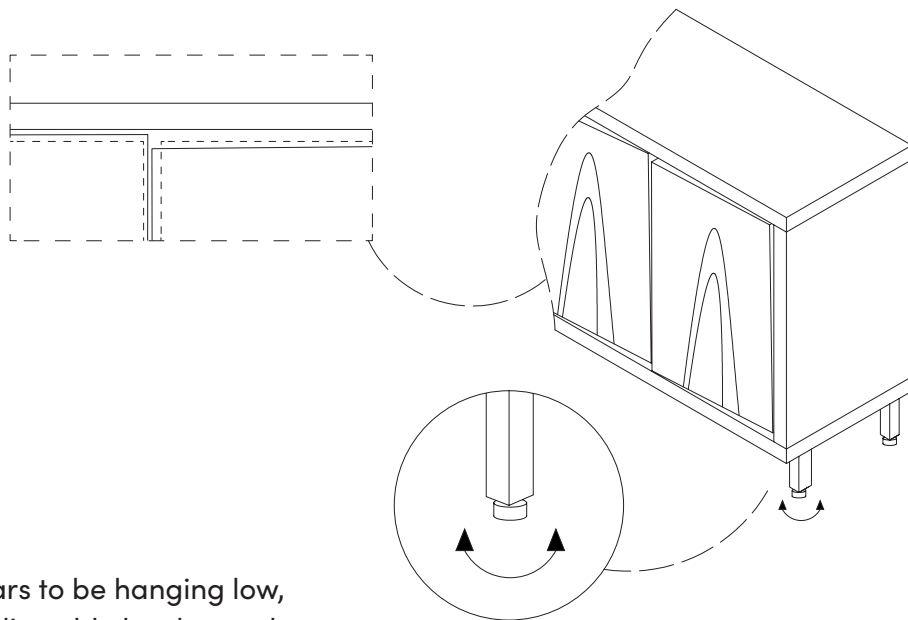


Wobbly or unlevel?
Adjust feet until stable!

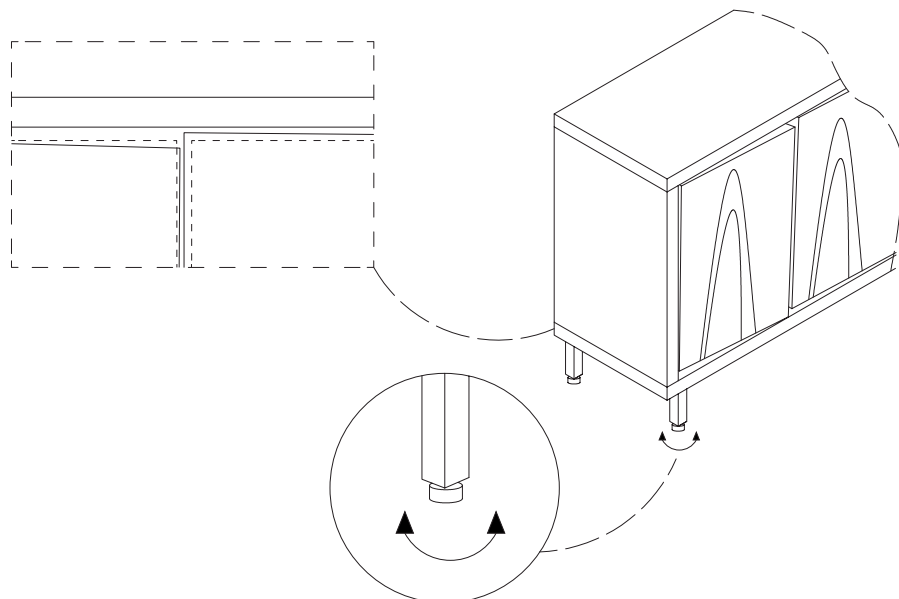
Is your cabinet door looking crooked or unevenly spaced?

If you're still having trouble lining everything up, your next step should be to try to adjust the feet slightly to square up the cabinet & doors. Follow the illustrations below:

If the right door appears to be hanging low, you can adjust the adjustable leveler on the front right until the door is better aligned.



If the left door appears to be hanging low, you can adjust the adjustable leveler on the front left until the door is better aligned.



Step 16

Safety first! Secure the Plastic Bracket (18) to the back of the unit using two M5*15mm Screws (17) and then loop the Plastic Tether (19) through the Bracket.



17



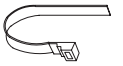
x 2pcs

18

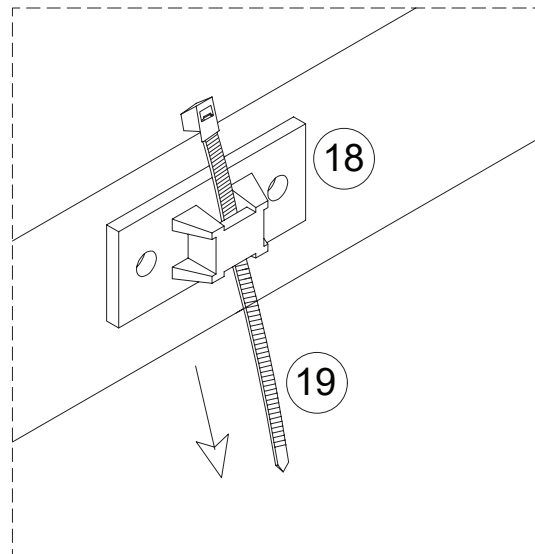
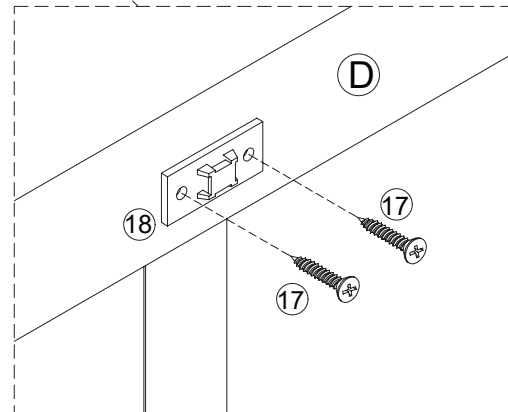
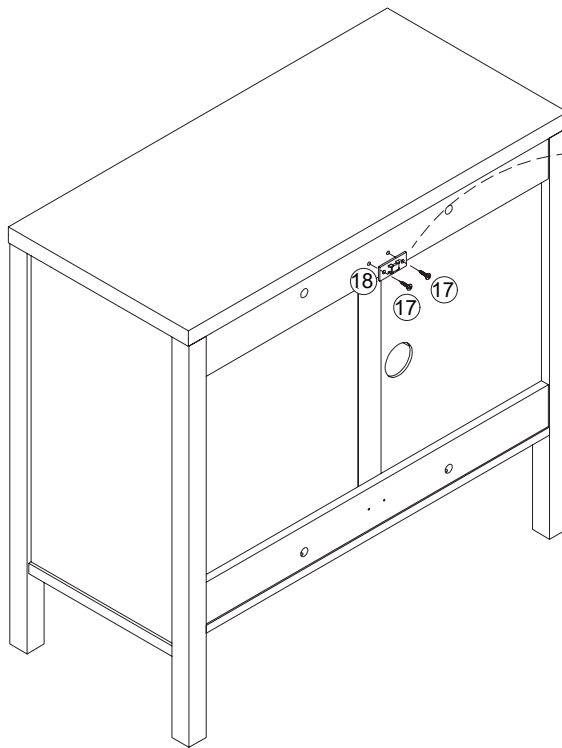


x 1pc

19



x 1pc



Step 17

Find where you want your storage unit to live and then mount the Plastic Bracket (18) to the wall using the provided Wall Anchors (20) and M4*35mm Screws (21). We recommend using a 1/4" drill bit.



18



x 1pc

20



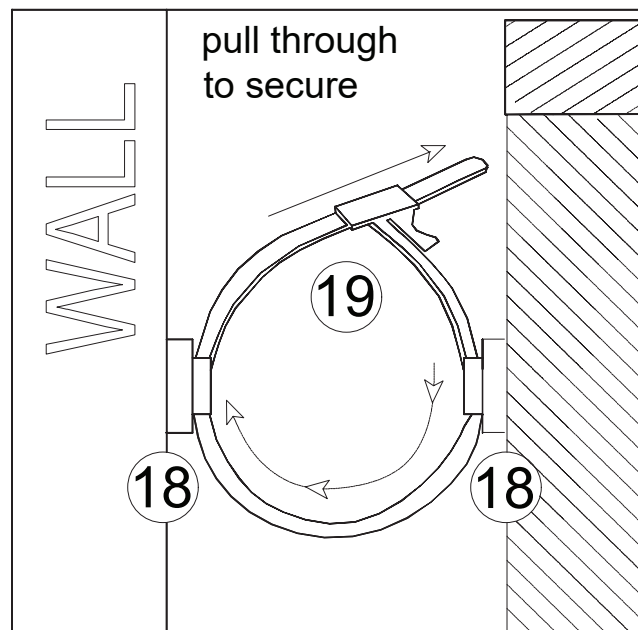
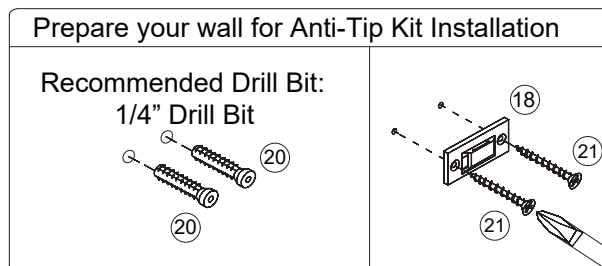
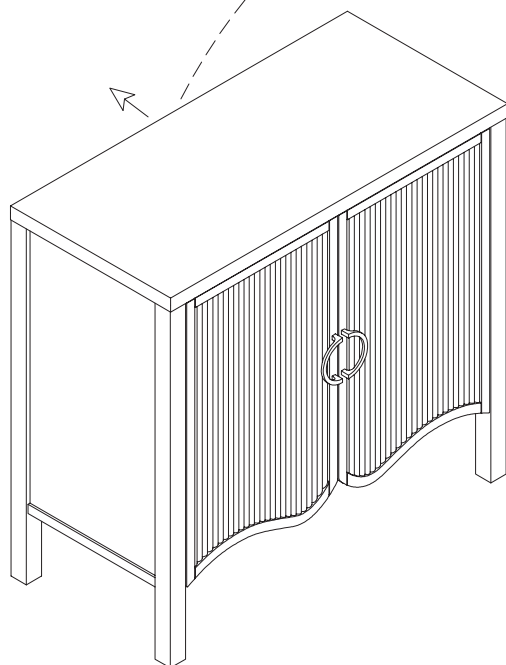
x 2pcs

21



x 2pcs

Last, but not least, loop the Plastic Tether (19) through both brackets to safely secure the unit to the wall. You did it! Time for a celebratory pizza? The answer to that is always yes!



IMPORTANT NOTE:

Young children (and/or pets) can be seriously injured by tipping furniture units.

You must install the provided anti-tip kit hardware solution, as instructed, to prevent the furniture units) from tipping over - which could possibly lead to injuries or damage.

The provided anti-tip kit hardware solution is intended only as an additional safety measure & deterrent; it is not a substitute for proper adult supervision.

The provided anti-tip kit hardware solution is not an earthquake restraint. If you wish to add the extra security of earthquake restraints, they must be purchased & installed separately.

No heartburn, when we handle the return

Give us a call **1-866-619-1004** or shoot us a message
at **help@nathanjames.com** we will issue you a free
replacement with **zero hassle**.

Our way



Give us a call



Replacement



You

Their way



Re-package item



Schedule pick up



Track package



Replacement



You

We really don't want you to go through the hassle of re-packaging your item
and sending it back, because let's be honest...nobody has time for that.

Safety first, fun later

We want your product to last as long as possible, so we recommend that you tighten the screws 2 weeks after assembly and for added safety check the tightness of all screws every 2 months.

For proper care and treatment, please check our website at **NathanJames.com/products**

Safe use of this product starts with you.

Use this product responsibly with the primary concern for your safety. Follow assembly instructions carefully and inspect product upon receipt and each use.

Nathan James and its parent companies cannot be held legally responsible for any injuries or death resulted from failure to follow instructions or improper use of this product.

Do not modify the structure of this product in any way.

Our products have been tested to meet specific safety measures as they were originally intended to be sold. Any modifications will present the risk of creating significant safety issues which NJ will not be responsible for.

Proper use

- | | |
|---------------|--------------------------------------|
| DO NOT | use for commercial purposes |
| DO NOT | frolic on storage unit |
| DO NOT | use storage unit as foot stool |
| DO NOT | leave spilled liquid on storage unit |
| DO NOT | use if damaged |
| DO NOT | make temporary repairs |
| DO NOT | use outdoors |

We are only in business if you're happy

For starters, thanks for being you.

☎ Toll-free at 1-866-619-1004

✉ Help@nathanjames.com

🌐 NathanJames.com/help

We do our best to ensure your furniture arrives without any problems, but occasionally mistakes happen—as humans we are imperfect beings. In the event that a part is damaged or missing, we will be more than happy to provide you with replacement part(s) for free.

Lifetime Guarantee

We believe in making things that last. That's why every product is backed by our Lifetime Guarantee. No hidden clauses. No runaround. If it breaks, we'll replace it—plain and simple. This isn't just a promise—it's our commitment to quality, and to you.

This product comes with a Lifetime Guarantee from the date of purchase. Please use your phone to scan the QR code on the cover of this booklet to register your product or visit <https://goo.gl/i9dk3q>



Did we do alright? Please spread the love!

If you are happy with your product, tell your friends and family about us or even better leave us a review online. Spreading the word gives us the opportunity to make more people happy and keep our prices low for your next purchase.

Brooke Burdon

Founder, Nathan James