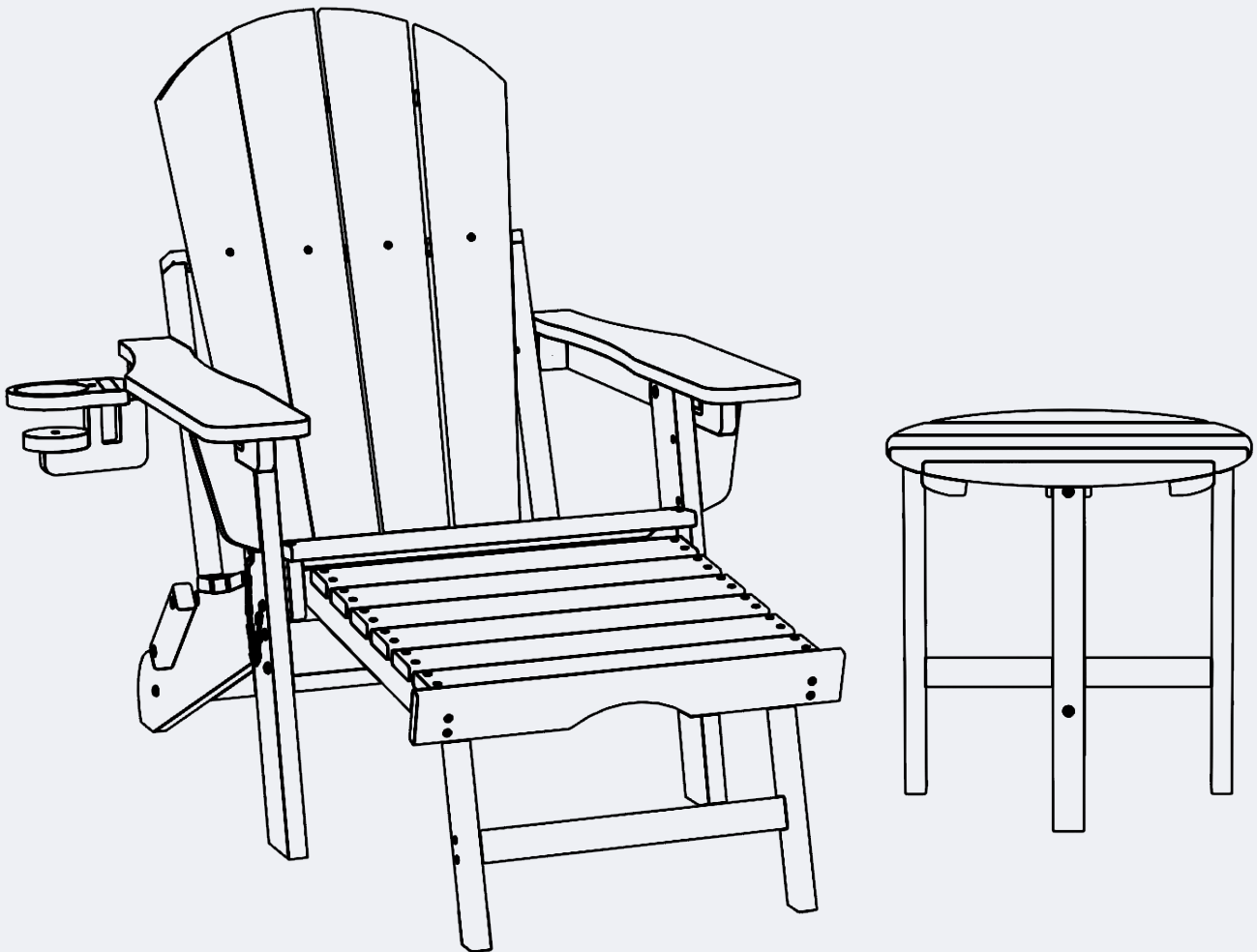


# INSTRUCTION MANUAL



Outdoor Folding Adjustable Adirondack Chair  
with Hideaway Ottoman & Round Side Table

**V1.0**

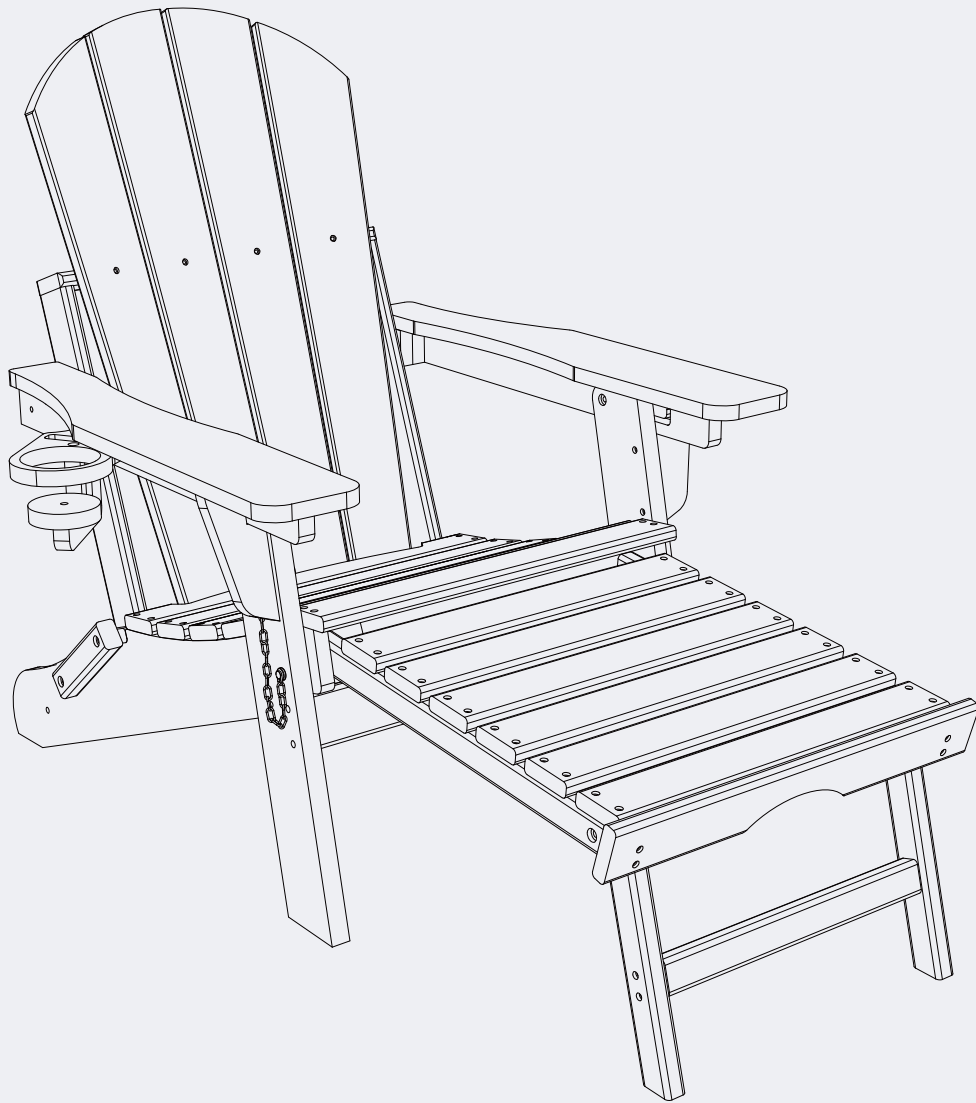
# TABLE OF CONTENTS

---

## ASSEMBLY INSTRUCTIONS

Outdoor Folding Adjustable Adirondack Chair.....	3
with Cup Holder & Hideaway Ottoman	
Round 18" Side Table .....	11

# INSTRUCTION MANUAL



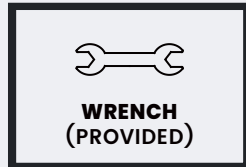
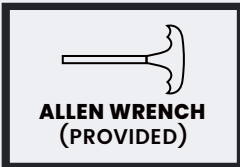
Outdoor Folding Adjustable Adirondack Chair  
with Cup Holder & Hideaway Ottoman

## ! NOTICE

### Do not overtighten screws. (Insert all screws before tightening screws.)

- Please do not exceed the weight limitations of this item.
- Do not stand on or use any part of this item as a step ladder.
- Firmly secure all bolts, screws and nuts before use.
- Reconfirm that all bolts, screws, and nuts are secure every 90 days.
- Do not use or store this item in the proximity of open flame or flammable/combustible chemicals.
- Be aware that some parts are heavy and have sharp edges.
- Be very careful when folding chair to avoid smashing your hands or fingers.

## TOOLS REQUIRED



**CHAIR**  
**330 LBS**  
**CAPACITY**

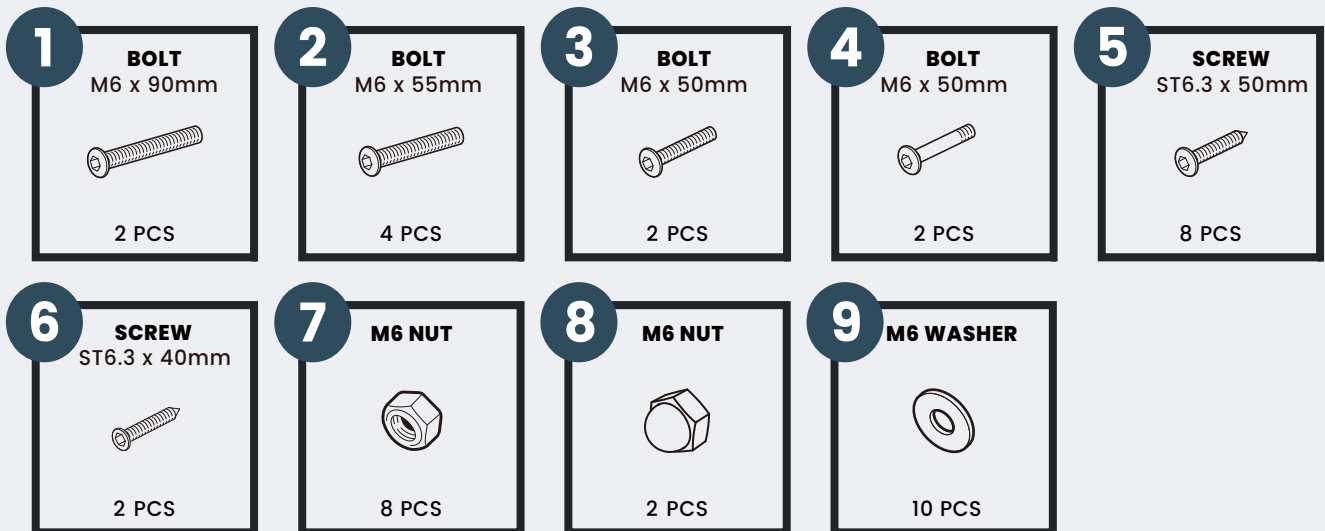


**1 PERSON**  
**ASSEMBLY**

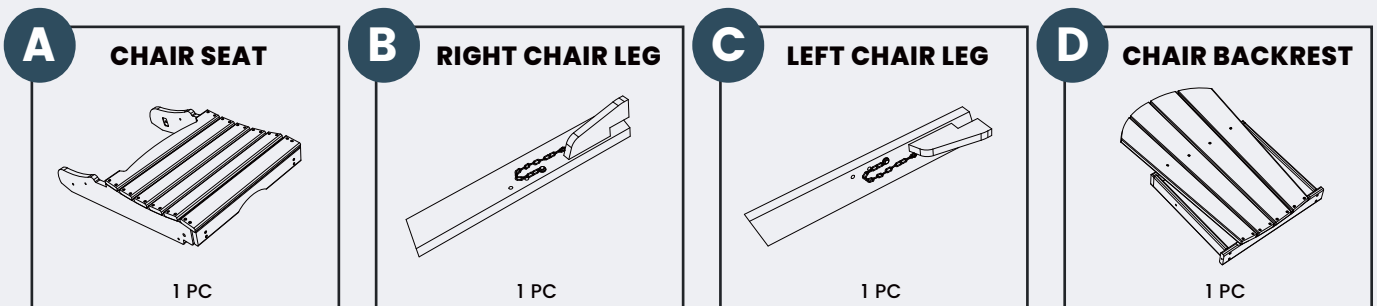


**UP TO 30 MIN.**  
**ASSEMBLY**

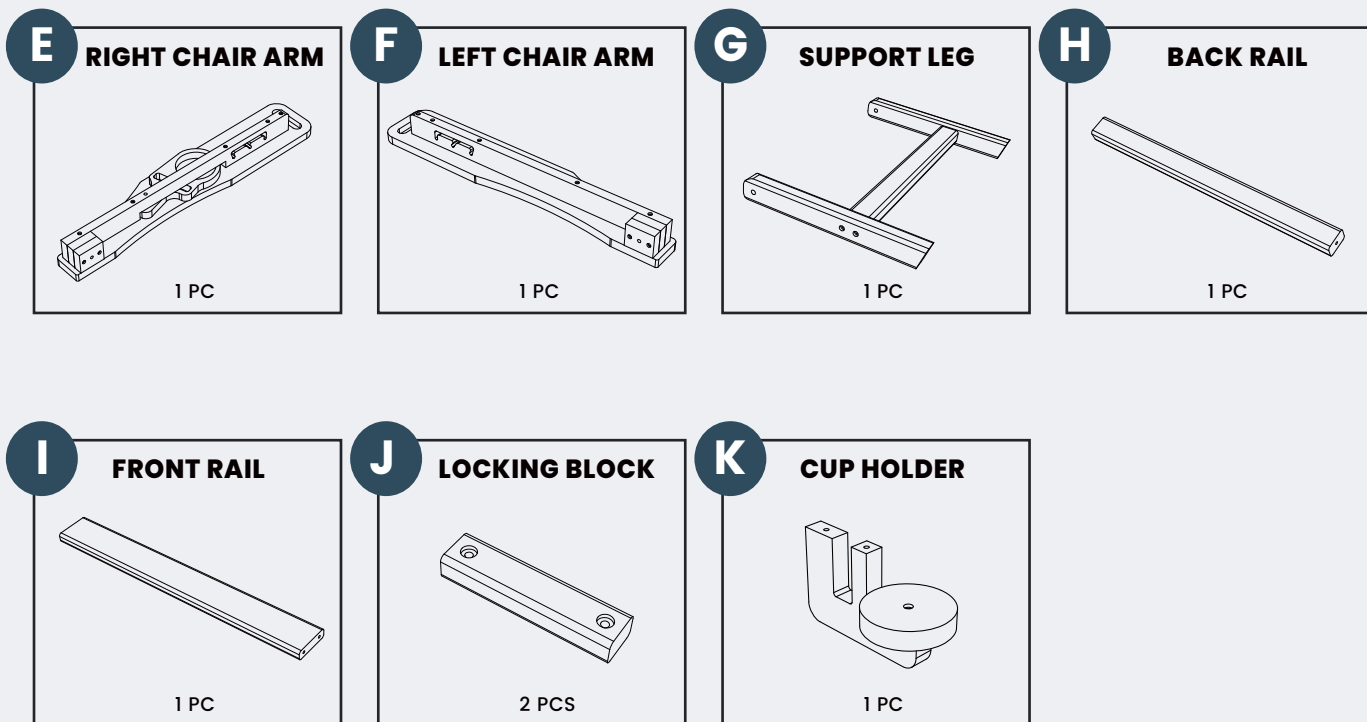
## HARDWARE



## PARTS

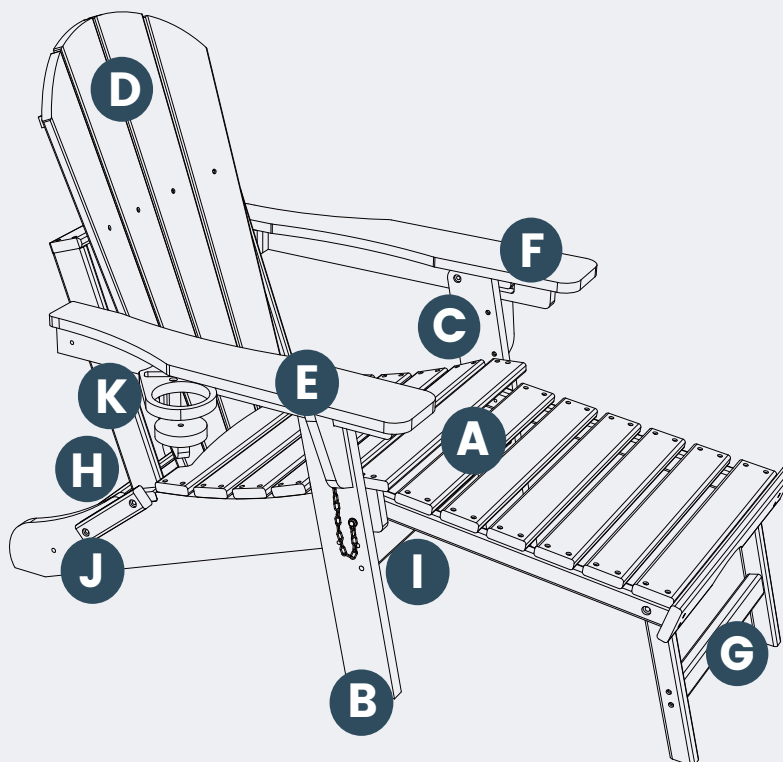


## PARTS



## PRODUCT ASSEMBLY - OVERALL VIEW

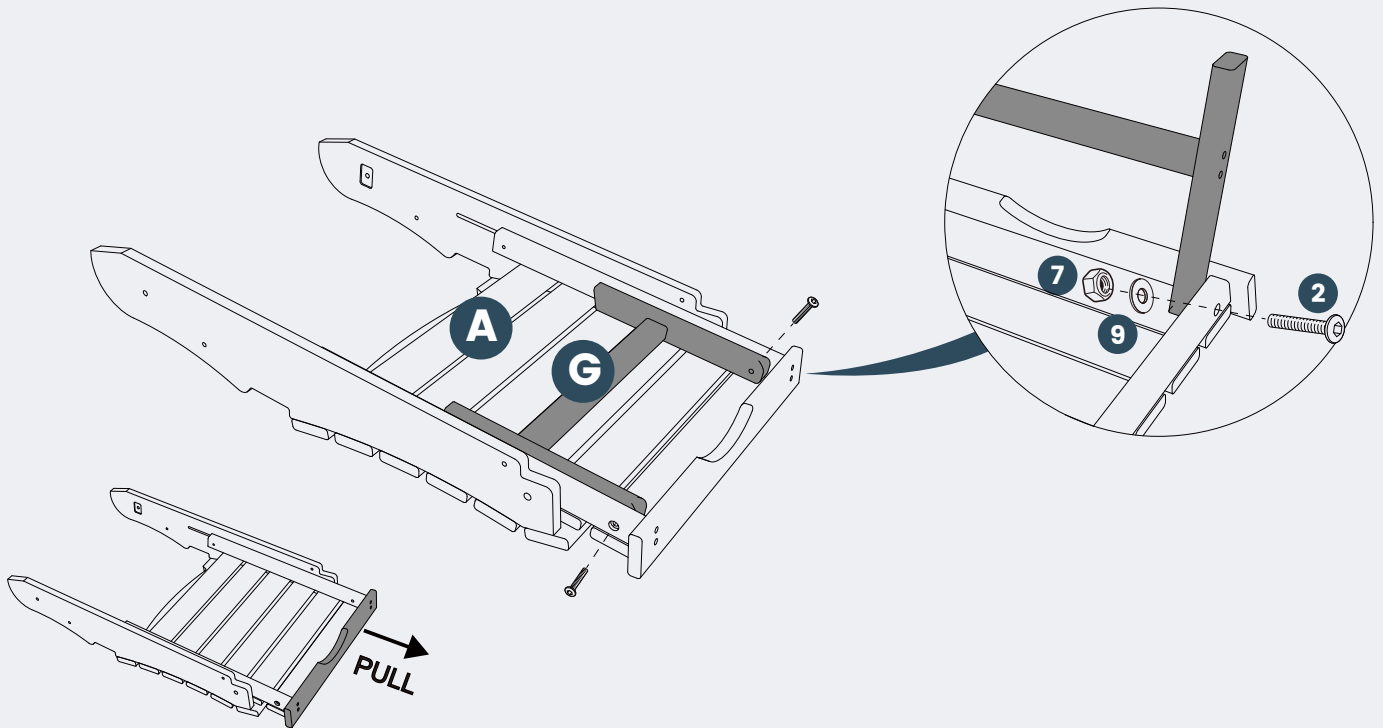
Look at following overall view of this chair and learn the exact position of each part to be assembled.



## PRODUCT ASSEMBLY

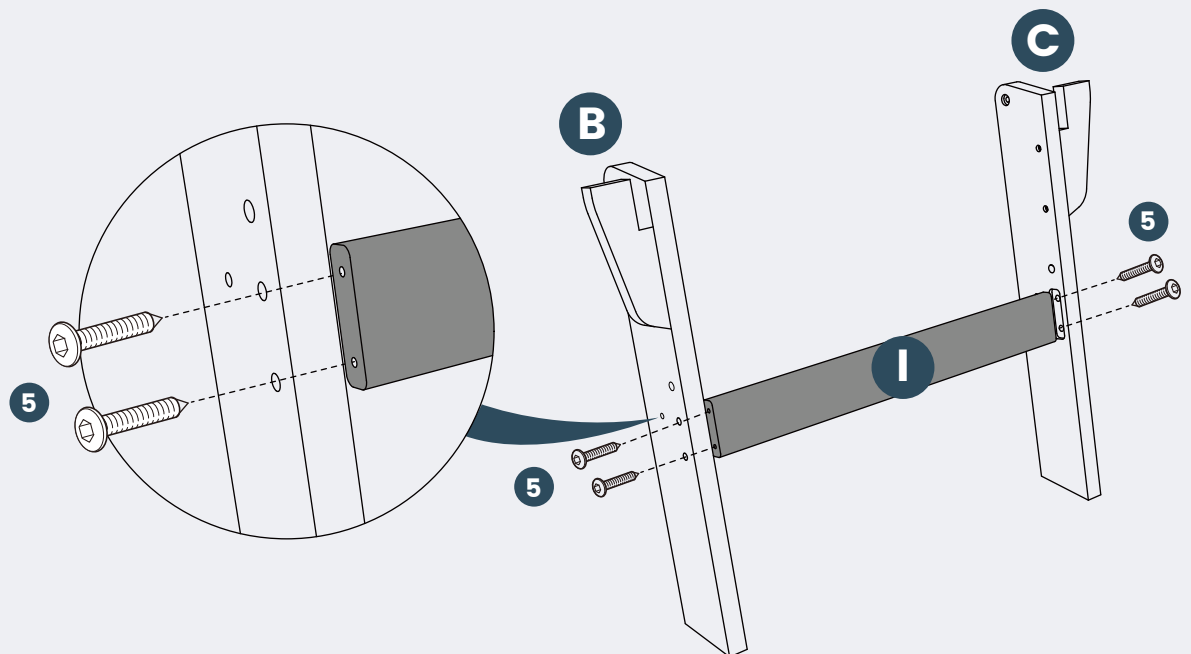
1

Attach **Part G Support Leg** to **Part A Chair Seat** with 2 pcs of **Hardware #2 Bolt** and **Hardware #9 Washer** and **Hardware #7 Nut**.



2

Attach **Part I Front Rail** to **Part B Right Chair Leg** and **Part C Left Chair Leg** with 4pcs of **Hardware #5 Screw**.

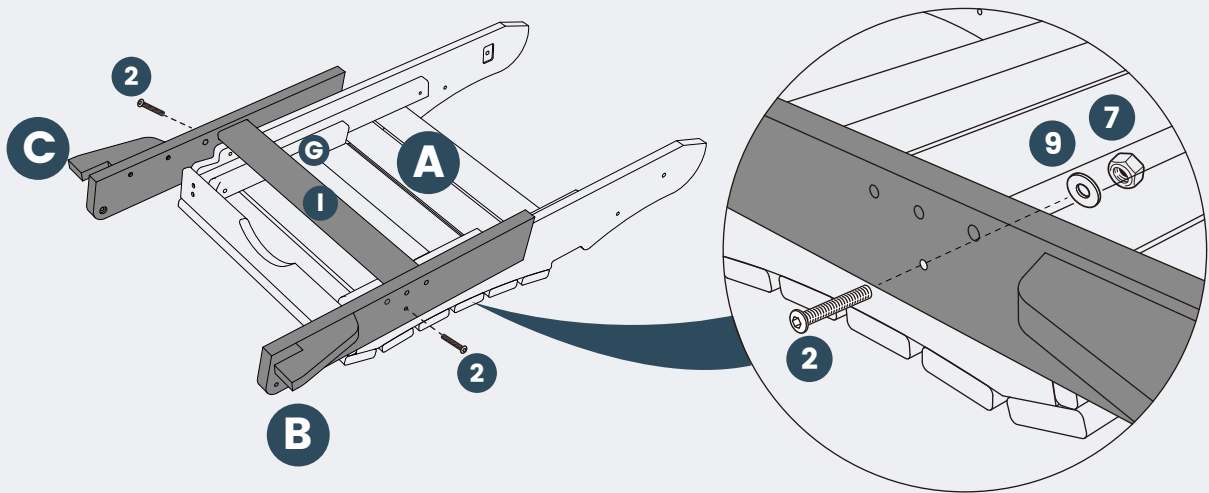


## PRODUCT ASSEMBLY

3

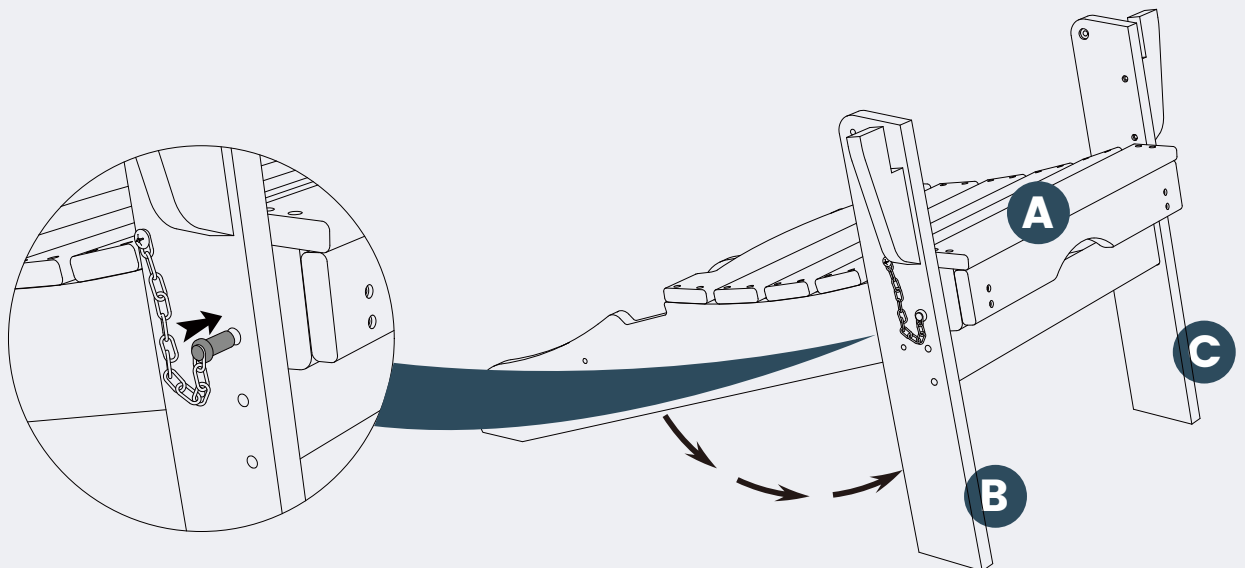
Connect the finished part of Step 2 to the finished part of Step 1 with 2 pcs of **Hardware #2 Bolt** and **Hardware #9 Washer** and **Hardware #7 Nut**.

Do not tighten the bolts too much at this step.



4

Place the steel pins into both legs to lock them in place.



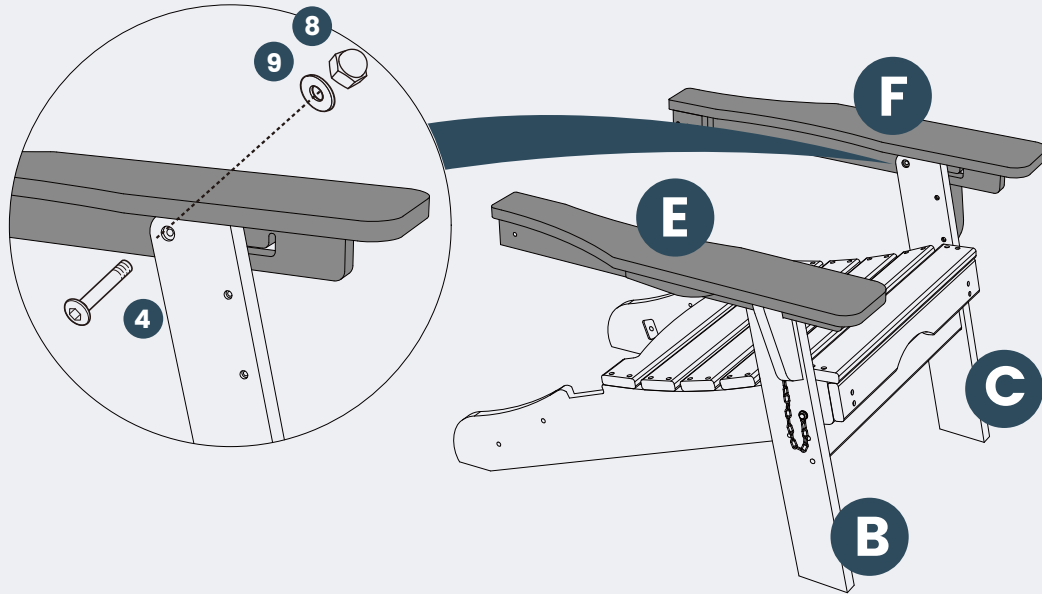
## PRODUCT ASSEMBLY

5

Attach **Part F Left Chair Arm** to **Part C Left Chair Leg** with 1 pc of **Hardware #4 Bolt** and **Hardware #9 Washer** and **Hardware #8 Nut**.

Do same to **Part E Right Chair Arm** and **Part B Right Chair Leg**.

Do not tighten the bolts too much at this step.

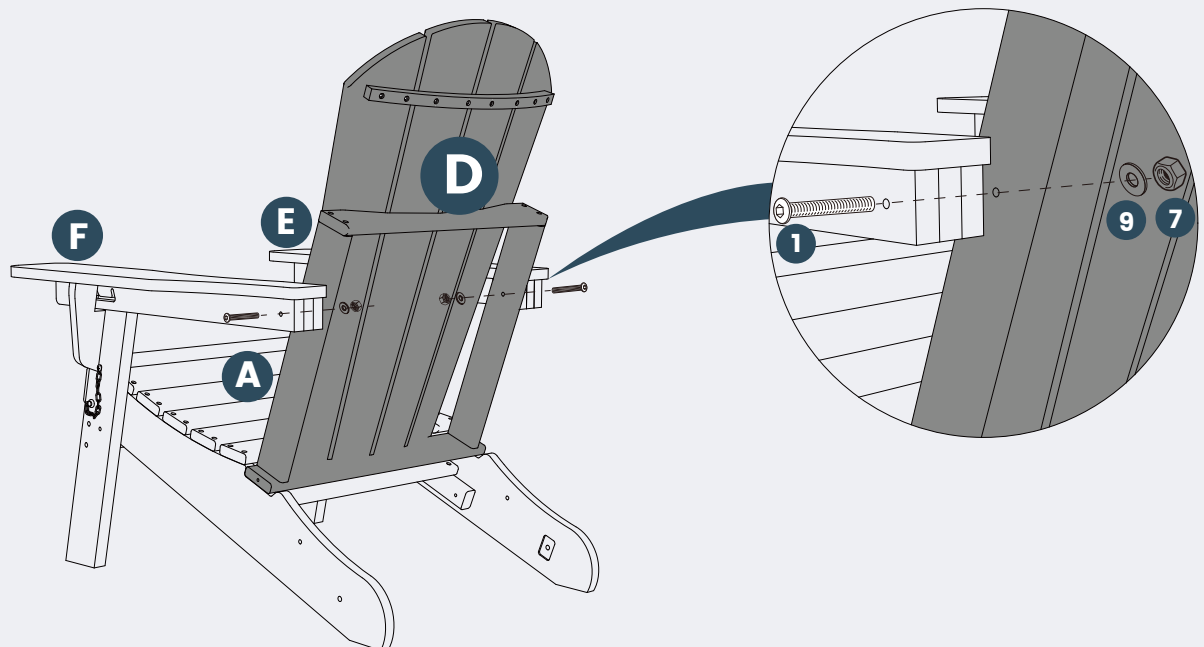


6

Fix **Part D Chair Backrest** into **Part A Chair Seat** and then attach **Part D Chair Backrest** to **Part F Left Chair Arm** with 1 pc of **Hardware #1 Bolt** and **Hardware #9 Washer** and **Hardware #7 Nut**.

Do same to **Part D Chair Backrest** and **Part E Right Chair Arm**.

Do not tighten the bolts too much at this step.



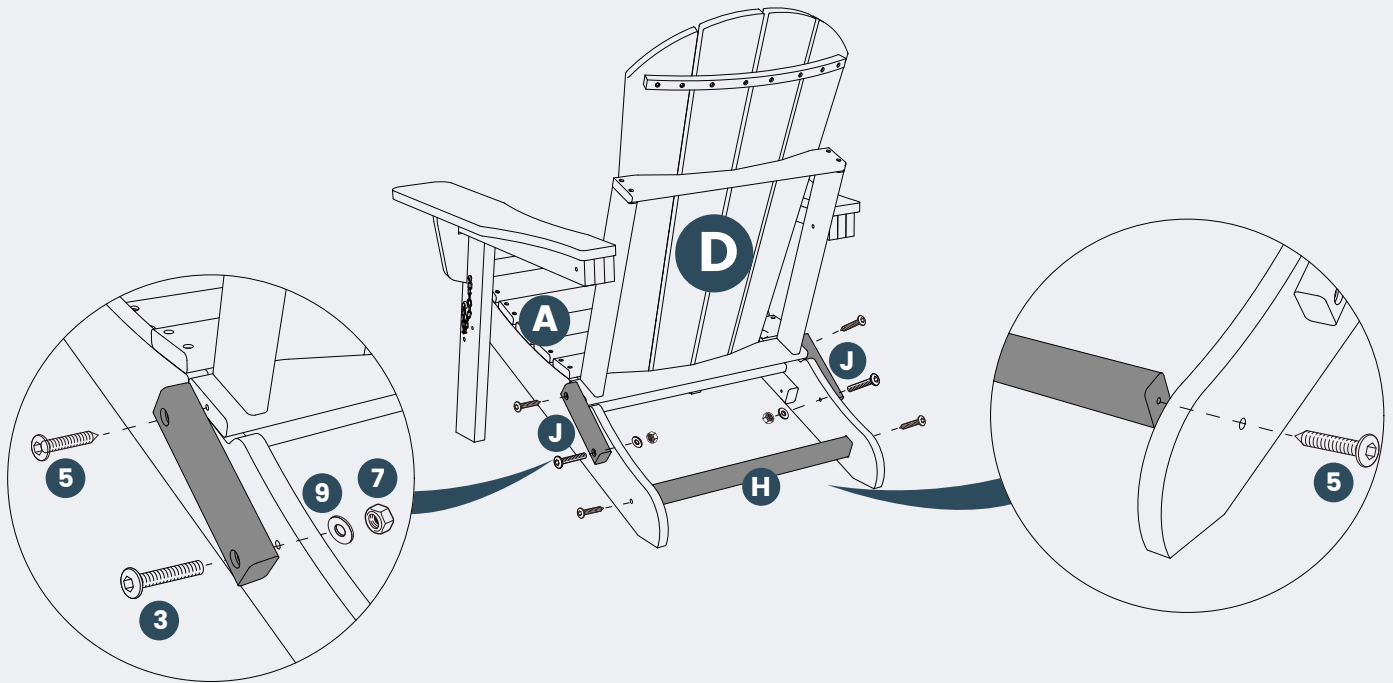


## PRODUCT ASSEMBLY

7

Attach **Part J Locking Block** to **Part D Chair Backrest** (both sides) with 2 pcs of **Hardware #5 Screw** and attach **Part J Locking Block** to **Part A Chair Seat** (both sides) with 2 pcs of **Hardware #3 Bolt** and **Hardware #9 Washer** and **Hardware #7 Nut**.

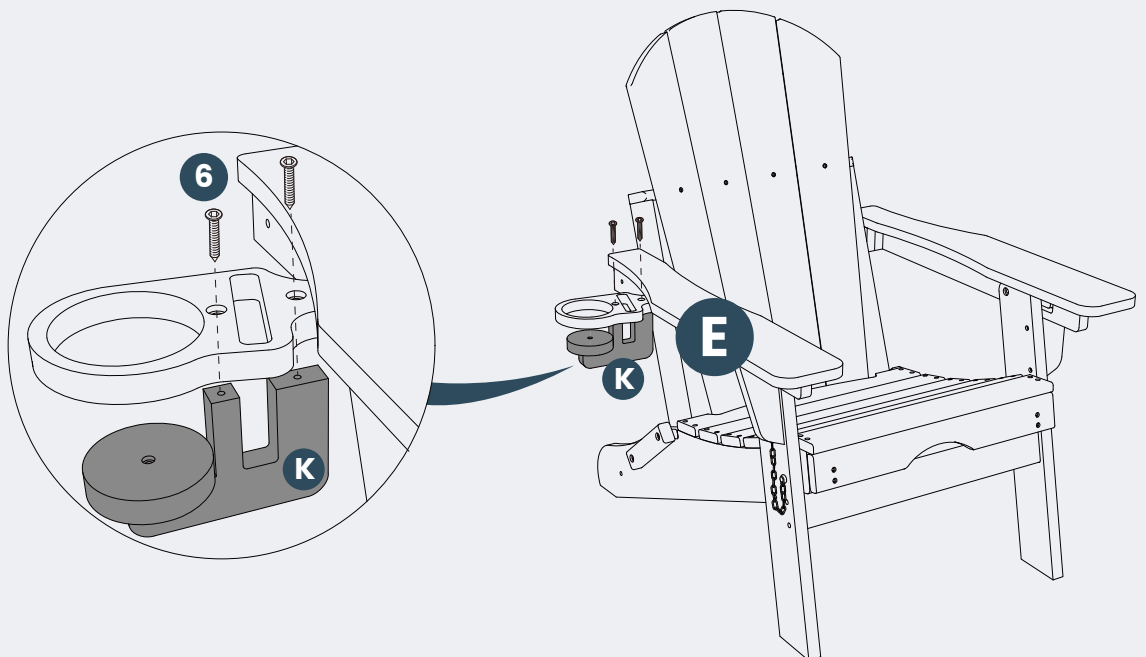
Attach **Part H Back Rail** to **Part A Chair Seat** with 2 pcs of **Hardware #5 Screw**.



8

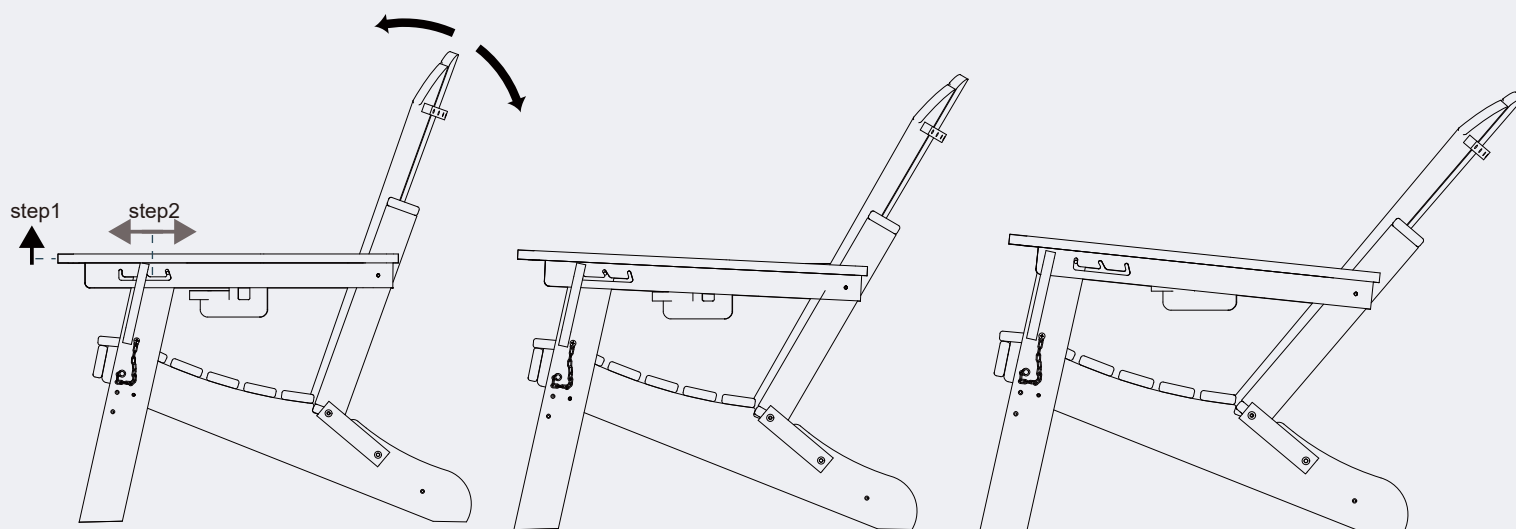
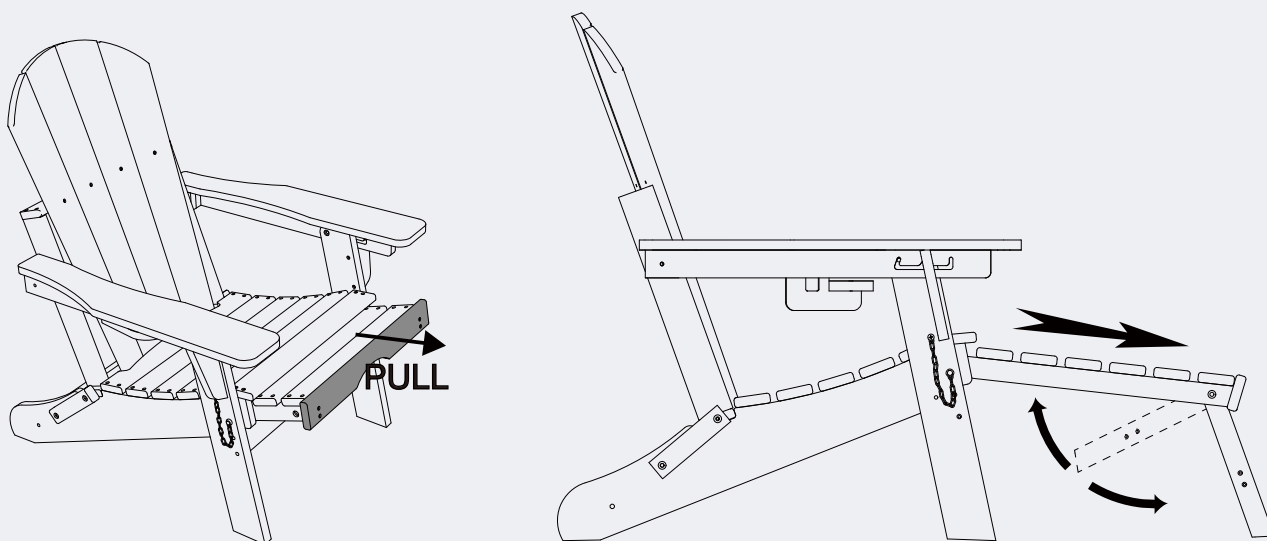
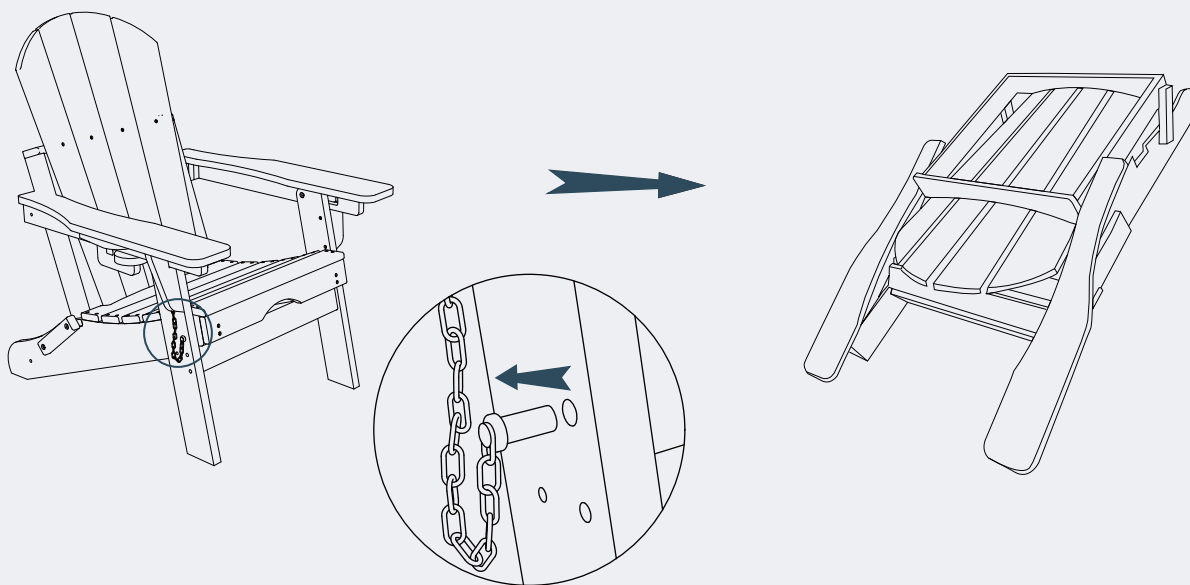
Attach **Part K Cup Holder** to **Part E Right Chair Arm** with 2 pcs of **Hardware #6 Screw**.

Tighten all screws after assembly is complete.

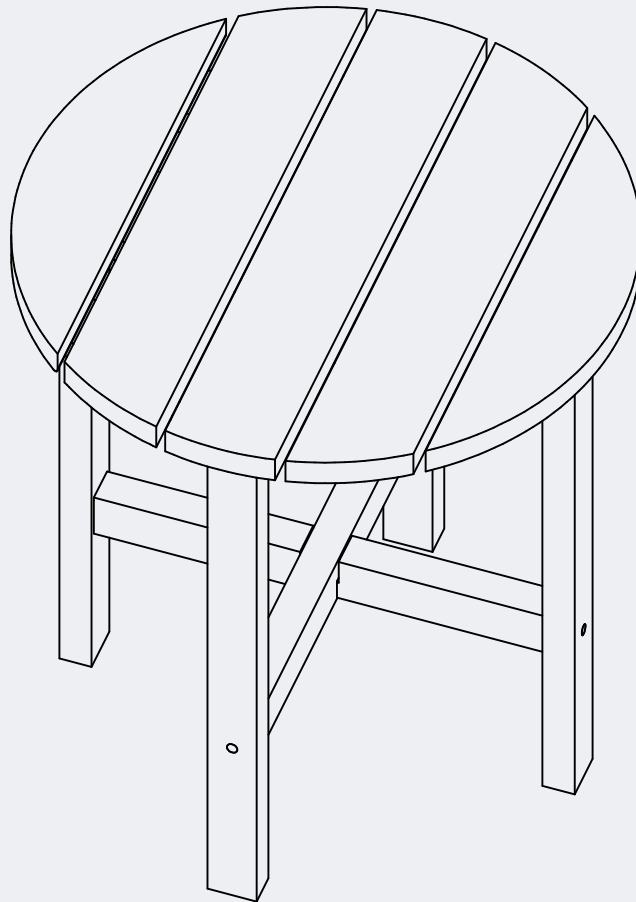


Congratulations! You finished the assembly of this Adirondack chair.

Pull the steel pins out of both legs to fold the chair as below.



# INSTRUCTION MANUAL



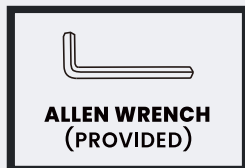
Round 18" Side Table

## ! NOTICE

### Do not overtighten bolts. (Insert all bolts before tightening bolts.)

- Please do not exceed the weight limitations of this item.
- Do not stand on or use any part of this item as a step ladder.
- Firmly secure all bolts, screws and nuts before use.
- Reconfirm that all bolts, screws, and nuts are secure every 90 days.
- Do not use or store this item in the proximity of open flame or flammable/combustible chemicals
- Be aware that some parts are heavy and have sharp edges.

## TOOLS REQUIRED



**TABLE**  
**180 LBS**  
**CAPACITY**



**1 PERSON**  
**ASSEMBLY**



**UP TO 15 MIN.**  
**ASSEMBLY**

## HARDWARE

**1**

**BOLT**  
M6 x 40mm

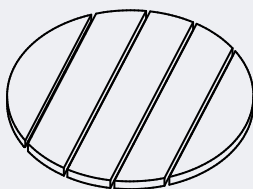


**8 PCS**

## PARTS

**A**

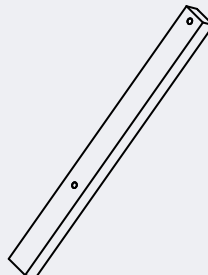
**TABLE TOP**



**1 PC**

**B**

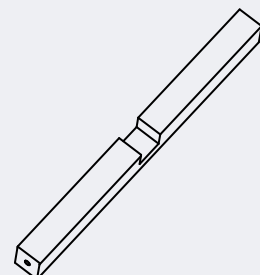
**TABLE LEG**



**4 PCS**

**C**

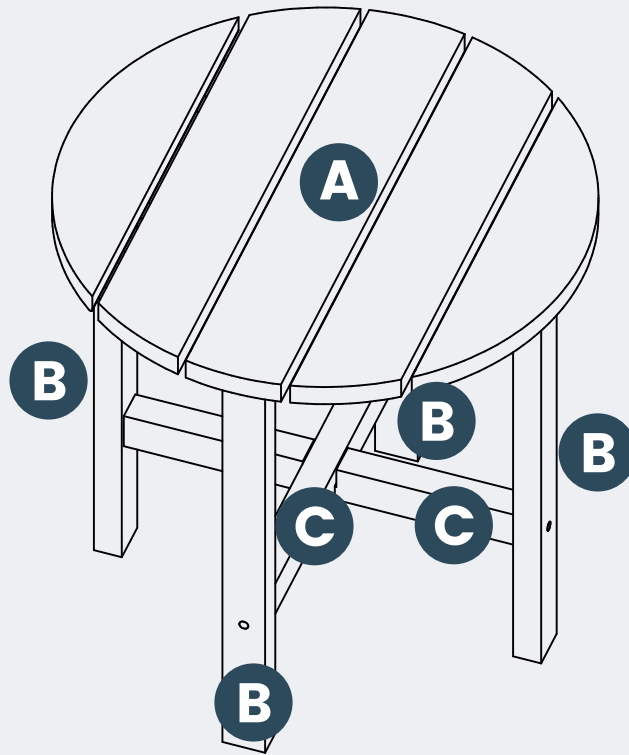
**CROSS FEET**



**2 PCS**

## PRODUCT ASSEMBLY – OVERALL VIEW

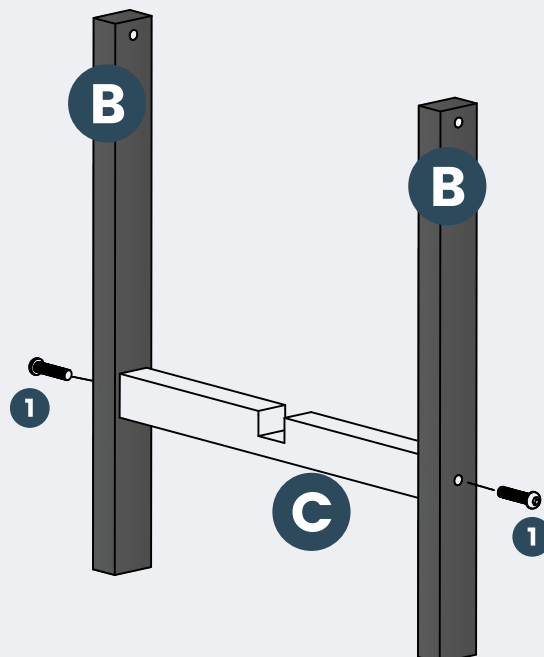
Look at following overall view of this table and learn the exact position of each part to be assembled.



## PRODUCT ASSEMBLY

**1**

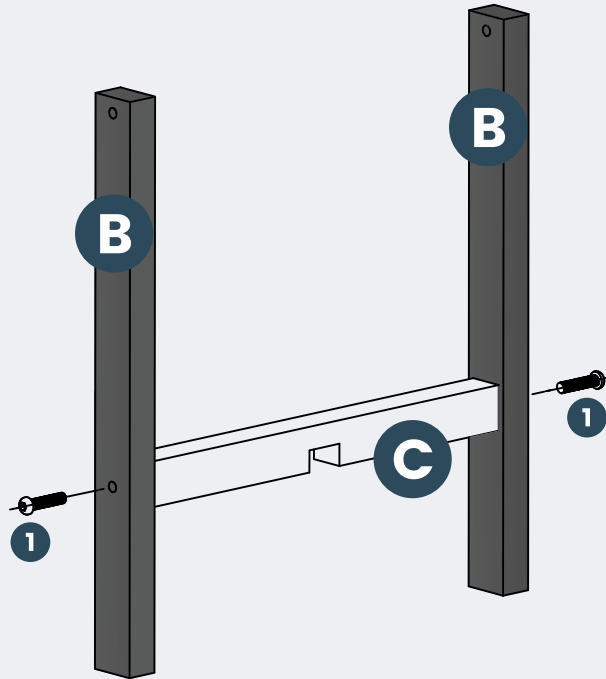
Attach **Part C Cross Feet** to 2 pcs of **Part B Table Leg** with 2 pcs of **Hardware #1 Bolt** as shown below.



## PRODUCT ASSEMBLY

2

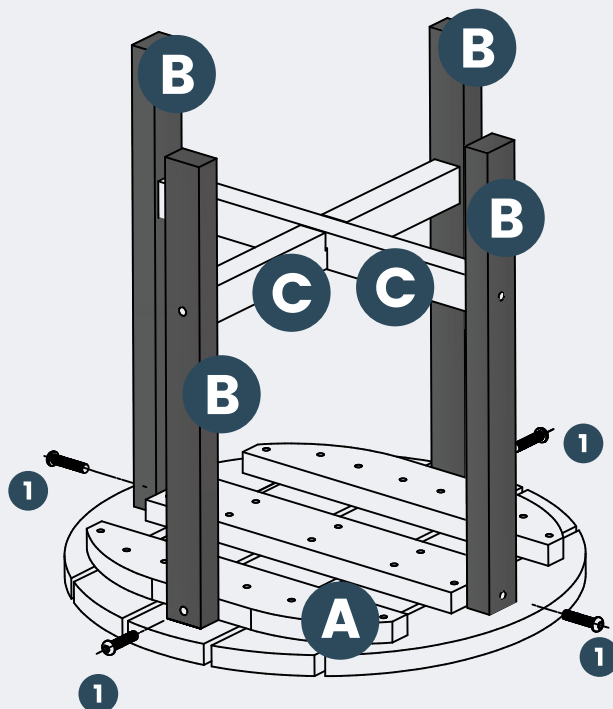
Attach **Part C Cross Feet** to 2 pcs of **Part B Table Leg** with 2 pcs of **Hardware #1 Bolt** as shown below.



3

Cross the parts from step 1 and step 2, then attach 4 pcs of **Part B Table Leg** to **Part A Table Top** with 4 pcs of **Hardware #1 Bolt**.

Check and tighten all the bolts again to finish the assembly.



---

## CLEANING TIPS

**REGULAR CLEAN:** Use a mixture of warm water and mild soap. Gently scrub the surface with a soft bristle brush to remove any dirt or stains.

**QUICK CLEAN:** You can simply wipe down the furniture with a damp cloth.

Regular cleaning not only preserves the aesthetic appeal of your furniture, but also helps extend its lifespan.