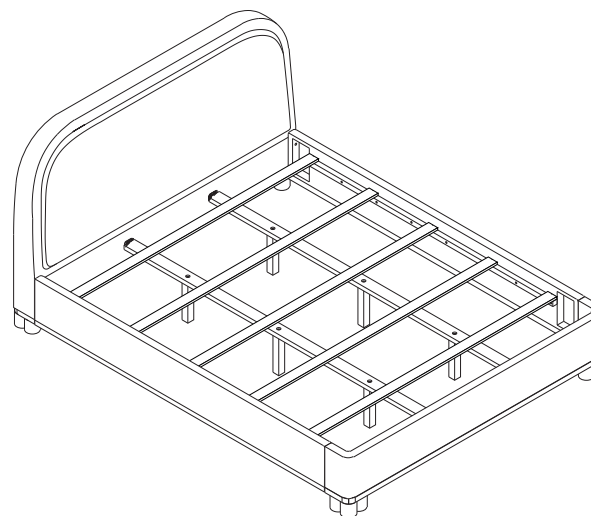


ROBERTO CHENILLE KING BED

DESIGN # SFV6116-K

Assembly instructions



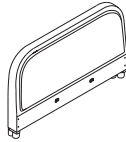
Need help?
Feel free to contact us via email or call
if you have any specific questions!
contact us:
cs@safavieh.com
866-422-9070

SAFAVIEH
C O U T U R E

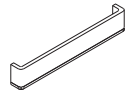
Thanks for bringing Safavieh couture into your home

Parts List

A x 1
HEADBOARD



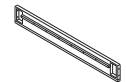
B x 1
FOOTBOARD



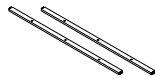
C x 1
SIDE RAIL (LEFT)



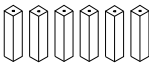
D x 1
SIDE RAIL (RIGHT)



E x 2
CENTER SUPPORT RAIL



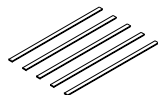
F x 6
CENTER LEG



G x 4
LEG



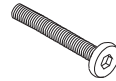
H x 5
SLATS



Everything we make is incredibly simple to set up, including your new bed. You won't need any additional tools.

Hardware List

HW1 x 8
Bolt 5/16" x 70mm



HW2 x 6
Bolt 5/16" x 38mm



HW3 x 16
Spring Washer 5/16"



HW4 x 22
Flat Washer 5/16"



HW5 x 8
Threaded Rod 5/16"



HW6 x 8
Nut 5/16"



HW7 x 10
Screw M4 x 35mm



HW8 x 8
Screw M4 x 20mm



HW9 x 1
Wrench M12

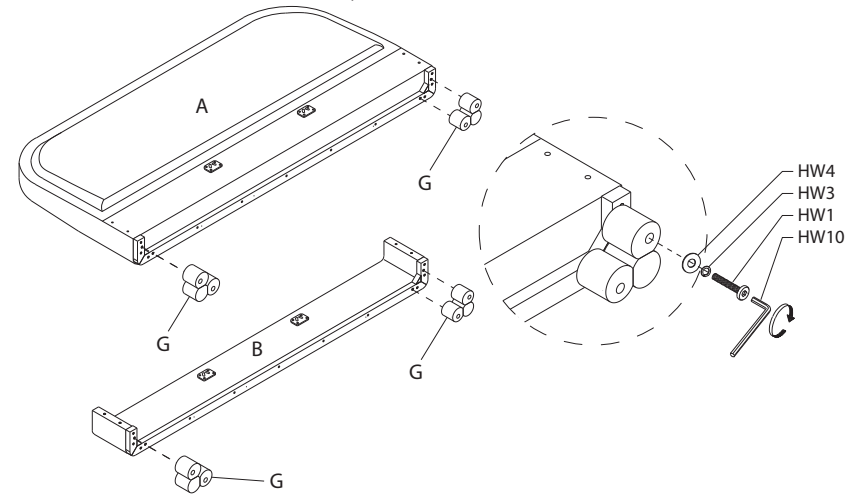


HW10 x 1
Allen Key M5 x 65mm



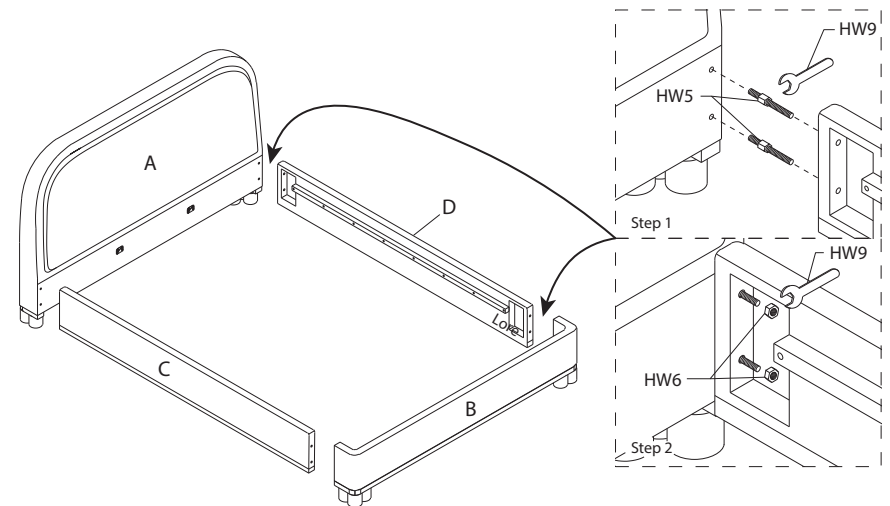
1

Attach the legs (G) to the Headboard (A) and Footboard (B) by Bolt (HW1), Spring Washer (HW3) and Flat Washer (HW4), use the Allen Key (HW10).



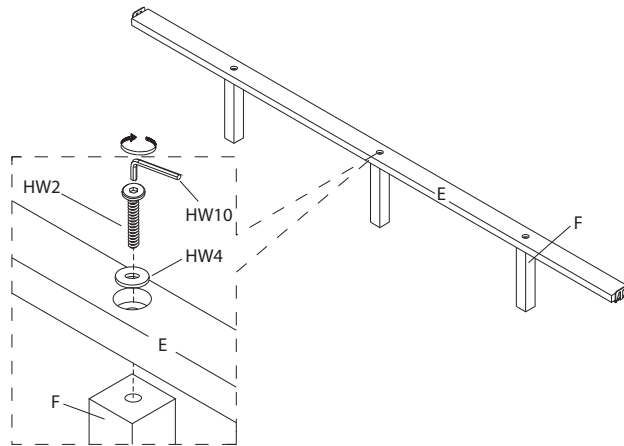
2

Assemble Side rail (C & D) to the Footboard (B) and Headboard (A) by Bolt (HW1), Spring Washer (HW2) and Flat Washer (HW3), use the Allen Key (HW6).



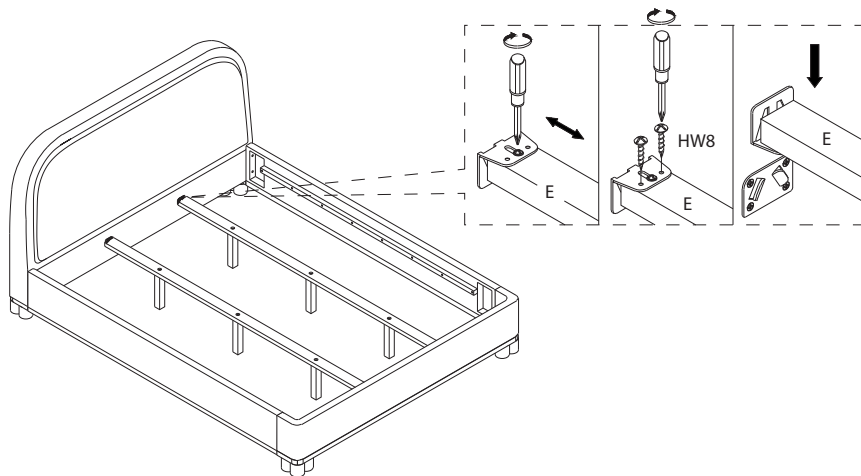
3

Attach Center Support Rail (E) and Center Legs (F) by Bolt (HW2) and Flat Washer (HW4), use the Allen Key (HW10).



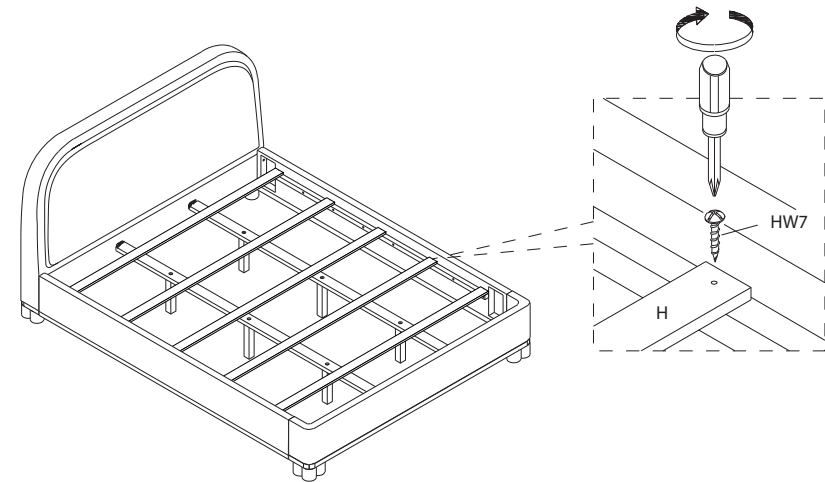
4

Assemble Center Support Rail (E) to the Footboard (B) and Headboard (A) by Screw (HW8) as shown.



5

Insert the Slats (H) into the sides (C & D) and Central rail (E) and secure using screw (HW7).



6

Place the bed in the position you use. We'd love to see it - just tag us (we're @safavieh) and use the hashtag #safavieh on Instagram!

