

NOTICE

*Please make sure that you have all part indicated and they are in good condition before you begin assembly of this item. Refer to part list and hardware list below for guidance.

*This item should be assembled on a soft surface to prevent scratching the finish during assembly.

*This item may require periodic tightening.

*If you are having difficulty, our friendly Customer Care team is always here to help. Please email customersupport@safavieh.com

PREPARATION

*Before beginning assembly of product, make sure all part are present. Compare part with part contents list and hardware contents list.

*If any part is missing or damaged, do not attempt to assemble the product.

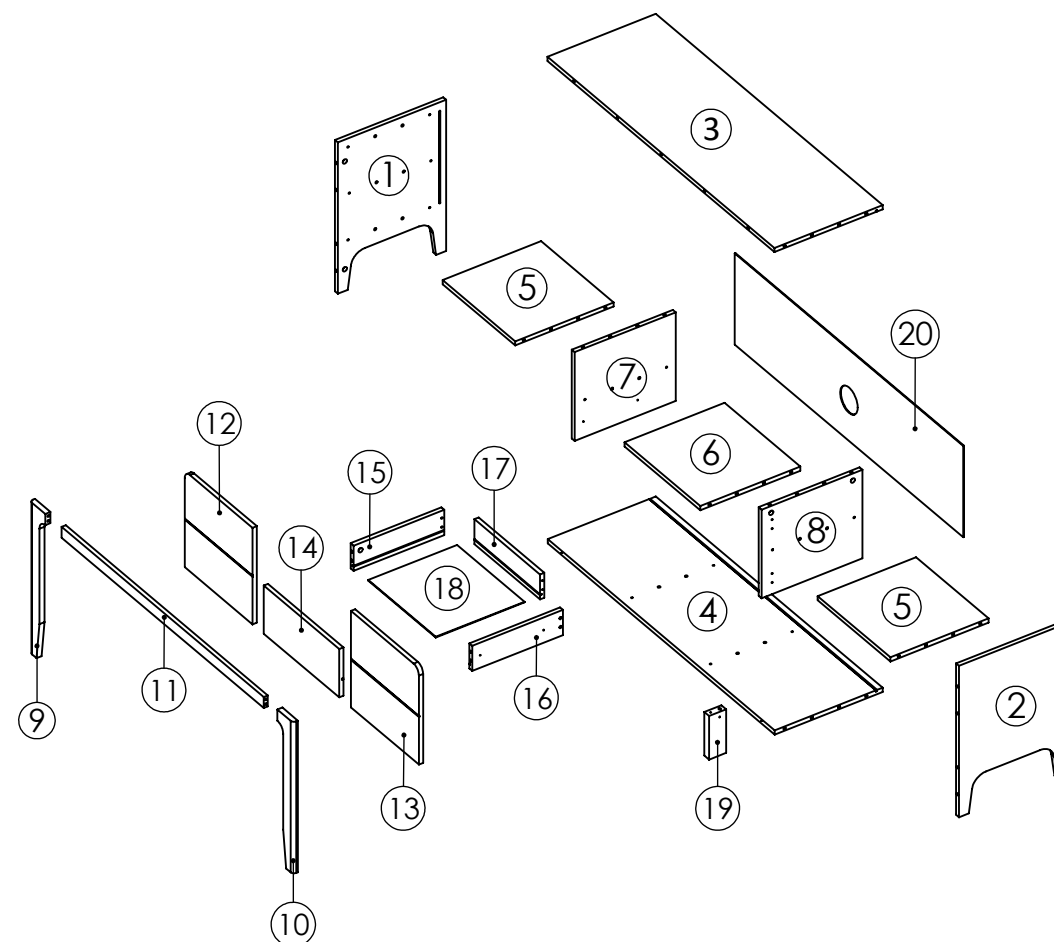
*Estimated Assembly Time: 60 minutes.

*Tools Required for Assembly (Not included): Screwdriver.

CARE AND MAINTENANCE

Always use felt pads under all articles to prevent discoloration or softening of the lacquer. Plastic and rubber bases on items can discolor wood. Wipe up spills immediately and avoid common hazards such as hot dishes, harsh solvents and abrasives. Cleaning should be done with a soft lint free cotton cloth dampened with water or furniture polish. On highly used surfaces we recommend applying a quality paste wax which should be used on a regular basis to provide additional protection from scratches and spills. How often you apply the wax depends on how much wear the furniture receives.

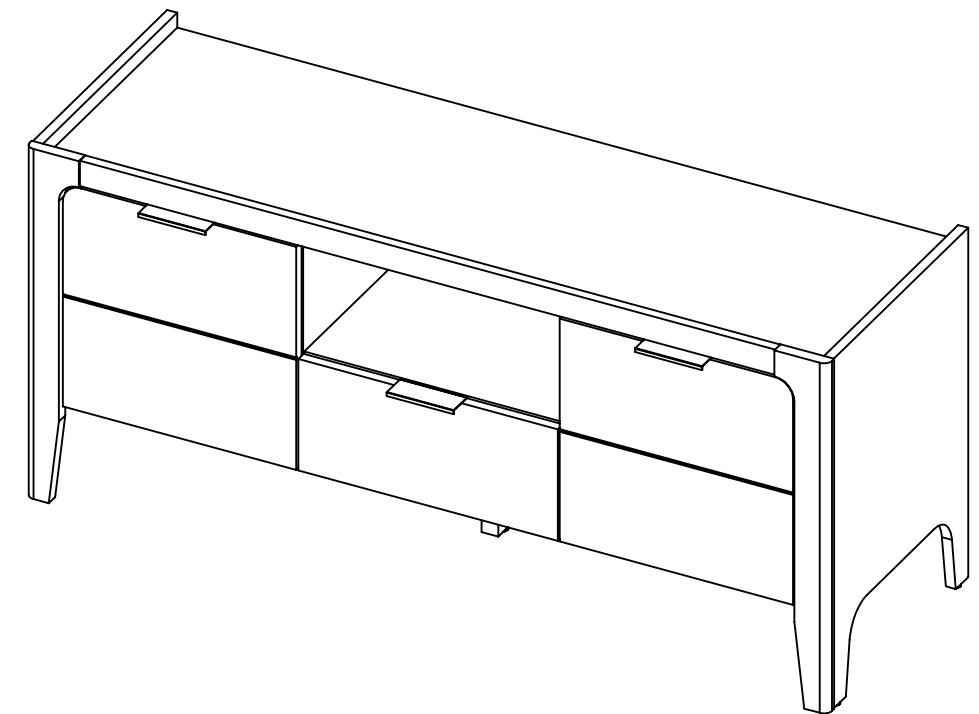
Part List



 **SAFAVIEH**
FURNITURE

Model# MED3106

Product Dimensions: W 47.24" X D 15.75" X H 21.26"



WARNING

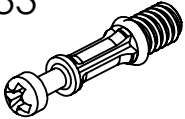
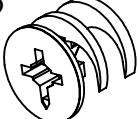
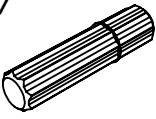
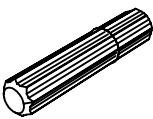
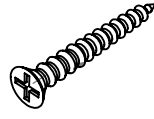
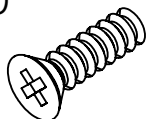
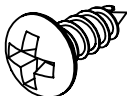
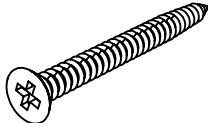
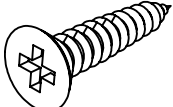
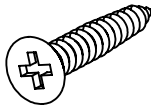
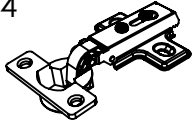
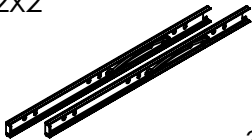
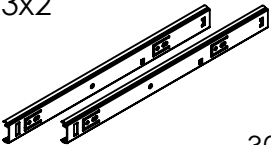
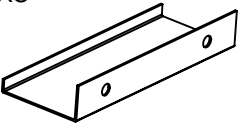

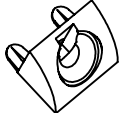
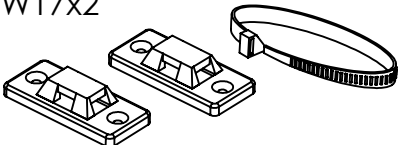
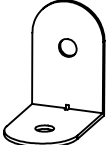
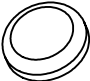
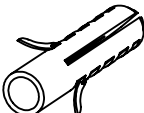
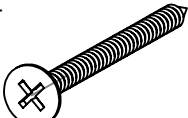
This product is intended for use with a
FLAT SCREEN TV ONLY
Maximum Screen Size: 55 inches
Top Weight Limit: 48 lbs
Shelf Load Limit: 14 lbs
Drawer Load Limit : 4 lbs
Use with heavier televisions may result in
instability causing tip over resulting in death
or Serious injury.



WARNING

Death or serious injury may occur
when children climb on audio
and/or video equipment furniture.
A remote control or toys placed on
the furnishing may encourage a
child to climb on the furnishing and
as a result the furnishing may tip
over on to the child

Hardware List

<div>HW1x33</div> <div></div> <div>Ø6x32 mm</div>	<div>HW2x33</div> <div></div> <div>Ø15x12 mm</div>	<div>HW3x37</div> <div></div> <div>Ø8x32 mm</div>	<div>HW4x4</div> <div></div> <div>Ø6x30 mm</div>	<div>HW5x4</div> <div></div> <div>Ø7x32 mm</div>	<div>HW6x20</div> <div></div> <div>Ø5x12 mm</div>
<div>HW7x18</div> <div></div> <div>Ø6x12 PH</div>	<div>HW8x5</div> <div></div> <div>Ø6x50 mm</div>	<div>HW9x4</div> <div></div> <div>Ø6x15 mm</div>	<div>HW10x8</div> <div></div> <div>Ø4x19 mm</div>	<div>HW11x4</div> <div></div> <div>STRAIGHT HINGE</div>	<div>HW12x2</div> <div></div> <div>300 MM</div>
<div>HW13x2</div> <div></div> <div>300 MM</div>	<div>HW14x3</div> <div></div> <div>HANDLE</div>	<div>HW15x17</div> <div></div> <div>COVER CAP STICKER</div>	<div>HW16x8</div> <div></div> <div>PLASTIC STOPPER</div>	<div>HW17x2</div> <div></div> <div></div>	<div>HW18x2</div> <div></div> <div></div>
<div>HW19x2</div> <div></div> <div></div>	<div>HW20x4</div> <div></div> <div>Ø8x35 mm PLUG</div>	<div>HW21x4</div> <div></div> <div>Ø10x50 mm</div>			

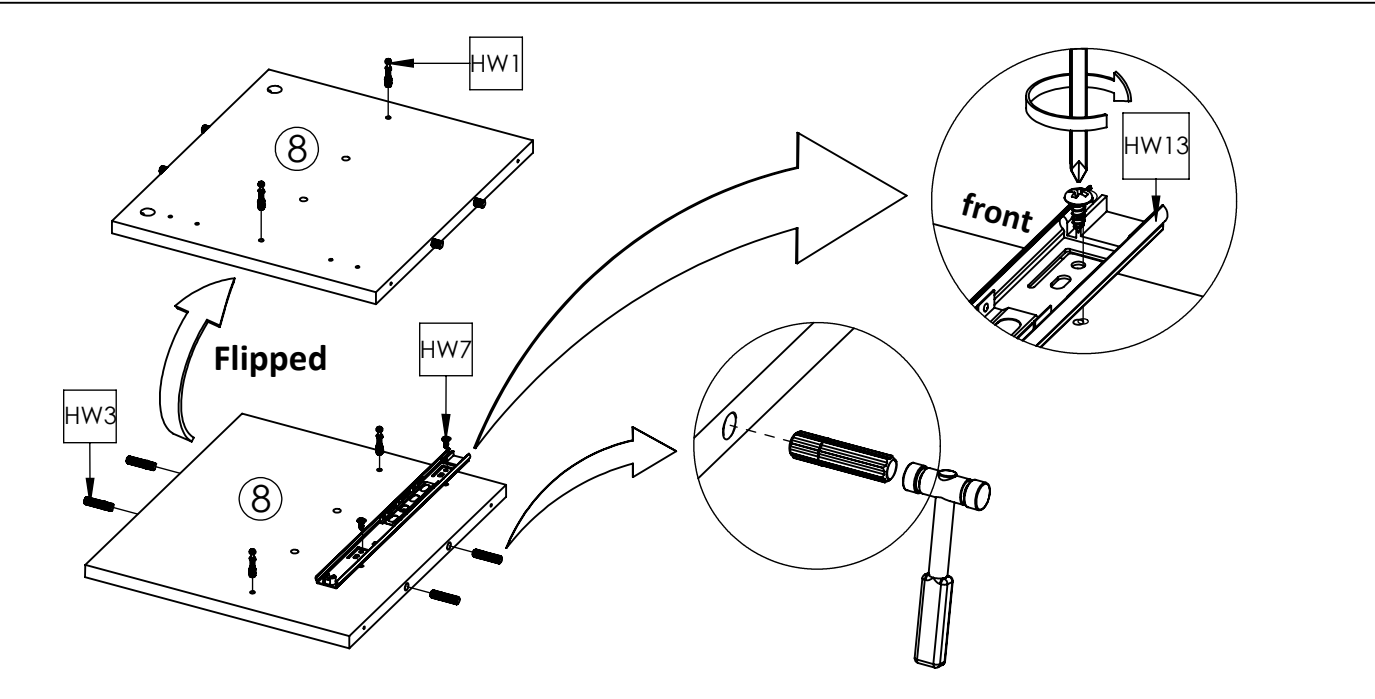
Part List & HW

Piece	Description	Qty	Carton call
1	Left Side Panel	1	1 of 1
2	Right Side Panel	1	1 of 1
3	Top Panel	1	1 of 1
4	Bottom Panel	1	1 of 1
5	Side Shelf Panel	2	1 of 1
6	Center Shelf Panel	1	1 of 1
7	Center Left Side Panel	1	1 of 1
8	Center Right Side Panel	1	1 of 1
9	Left Front Pillar	1	1 of 1
10	Right Front Pillar	1	1 of 1
11	Top Support	1	1 of 1
12	Left Door	1	1 of 1
13	Right Door	1	1 of 1
14	Front Drawer	1	1 of 1
15	Left Side Drawer	1	1 of 1
16	Right Side Drawer	1	1 of 1
17	Back Drawer	1	1 of 1
18	Base Drawer	1	1 of 1
19	Center Leg	1	1 of 1
20	Back Panel	1	1 of 1

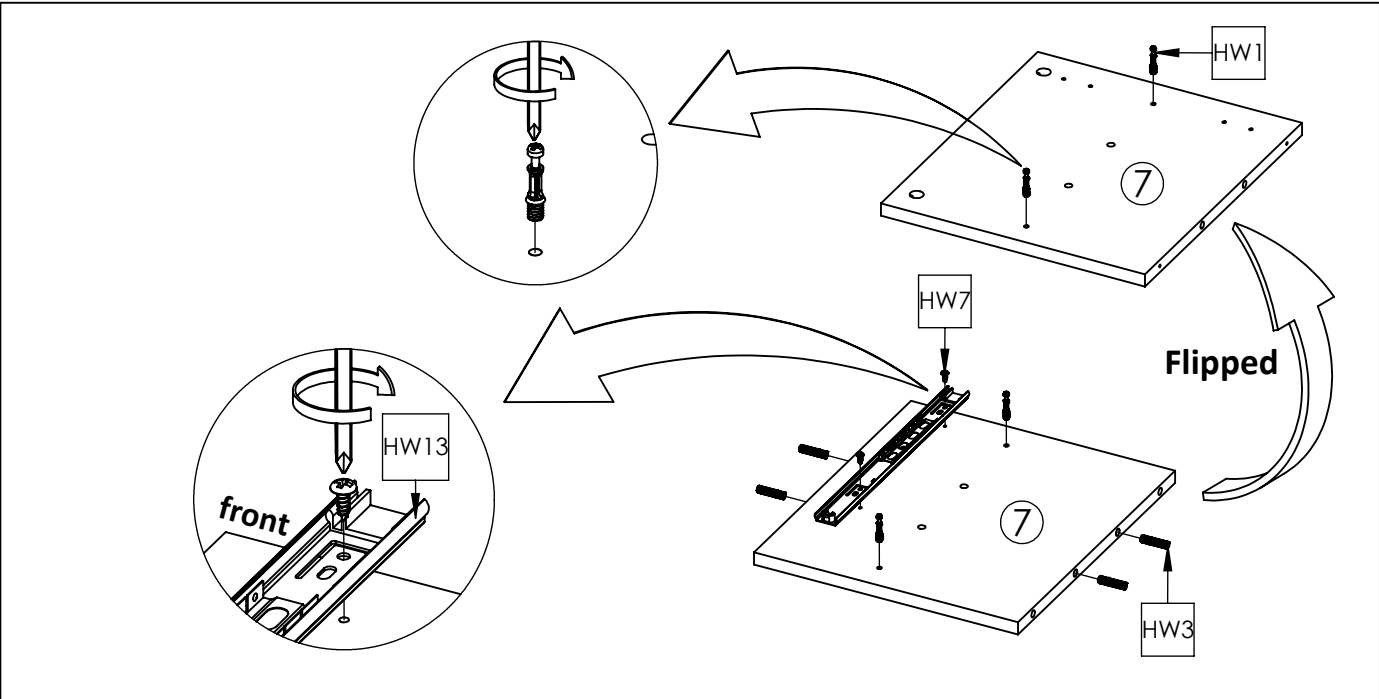
Piece	Description	Qty	Carton call
HW1	Cambolt	33	1 of 1
HW2	Camlock	33	1 of 1
HW3	Wooden Dowel Big Ø8 x 32 mm	37	1 of 1
HW4	Wooden Dowel Small Ø8 x 32 mm	4	1 of 1
HW5	Screw M7 x 32 mm	4	1 of 1
HW6	Screw M5 x 12 mm	20	1 of 1
HW7	Screw M6 x 12 PH	18	1 of 1
HW8	Screw M6 x 50 mm	5	1 of 1
HW9	Screw M6 x 15 mm	4	1 of 1
HW10	Screw M4 x 19 mm	8	1 of 1
HW11	Straight Hinge	4	1 of 1
HW12	Metal Runner 1	2	1 of 1
HW13	Metal Runner 2	2	1 of 1
HW14	Handle	3	1 of 1
HW15	Cover Cap Sticker	17	1 of 1
HW16	Plastic Stopper	8	1 of 1
HW17	Anti-Tip	2	1 of 1
HW18	Plate L	2	1 of 1
HW19	Reducer	2	1 of 1
HW20	M8 x 35 mm PLUG	4	1 of 1
HW21	Screw M10 x 50 mm	4	1 of 1

PREPARATION

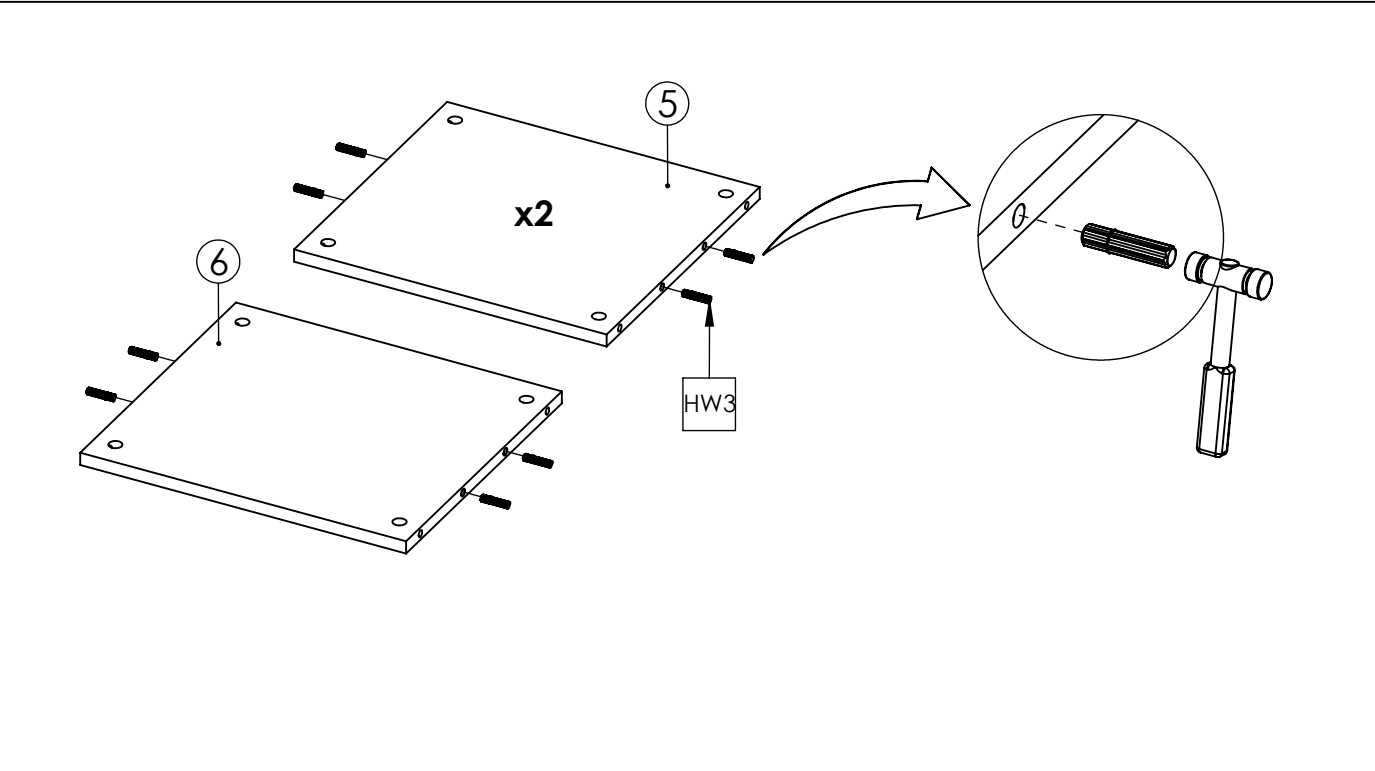
Before beginning assembly of product, make sure all part are present. Compare part with part contents list and hardware contents list.
If any part is missing or damaged, do not attempt to assemble the product.
Estimated Assembly Time: 60 minutes.



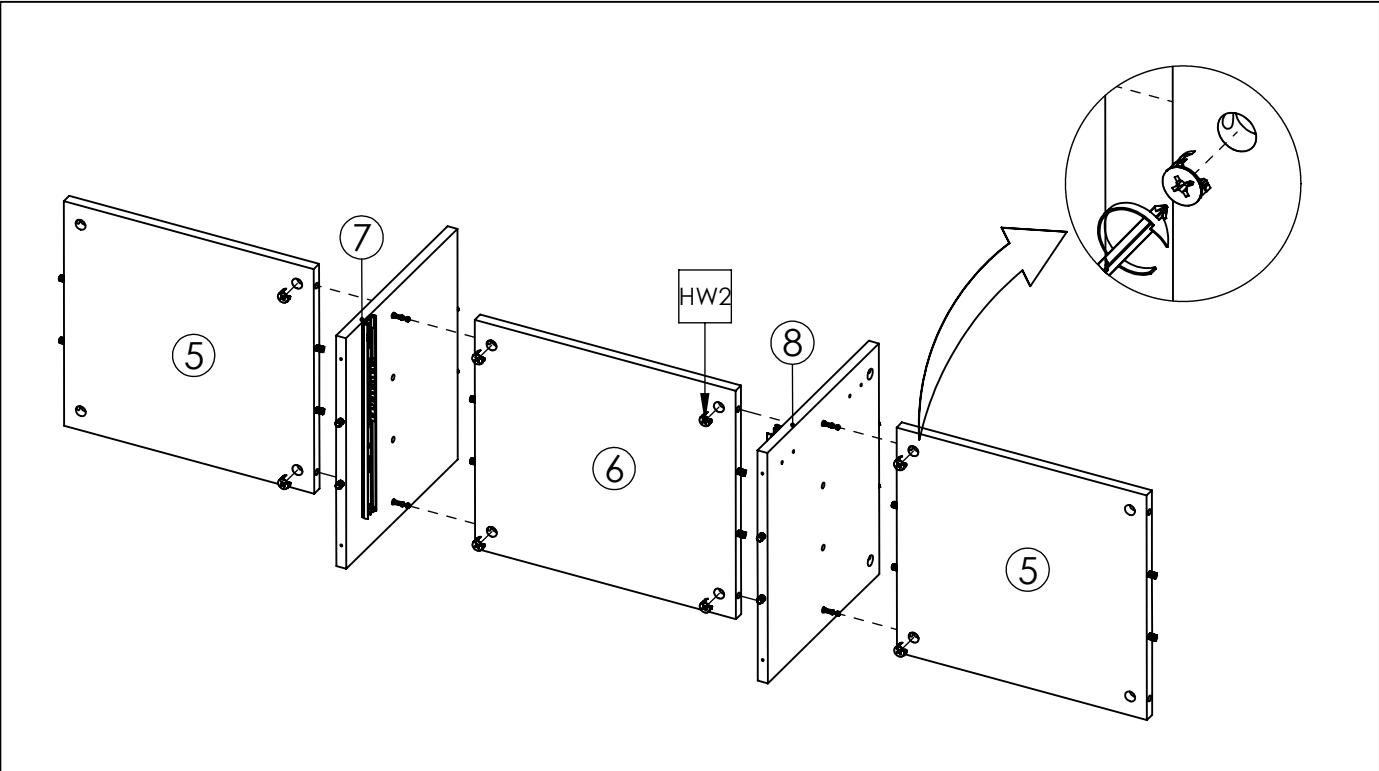
STEP1: Insert Cambolt (HW1) and Wooden Dowel Big (HW3) into Center Right Side Panel (8). Continue with securing part of the metal runner 1 (HW12) into position as the above image, using screw M6x12mm PH (HW7).



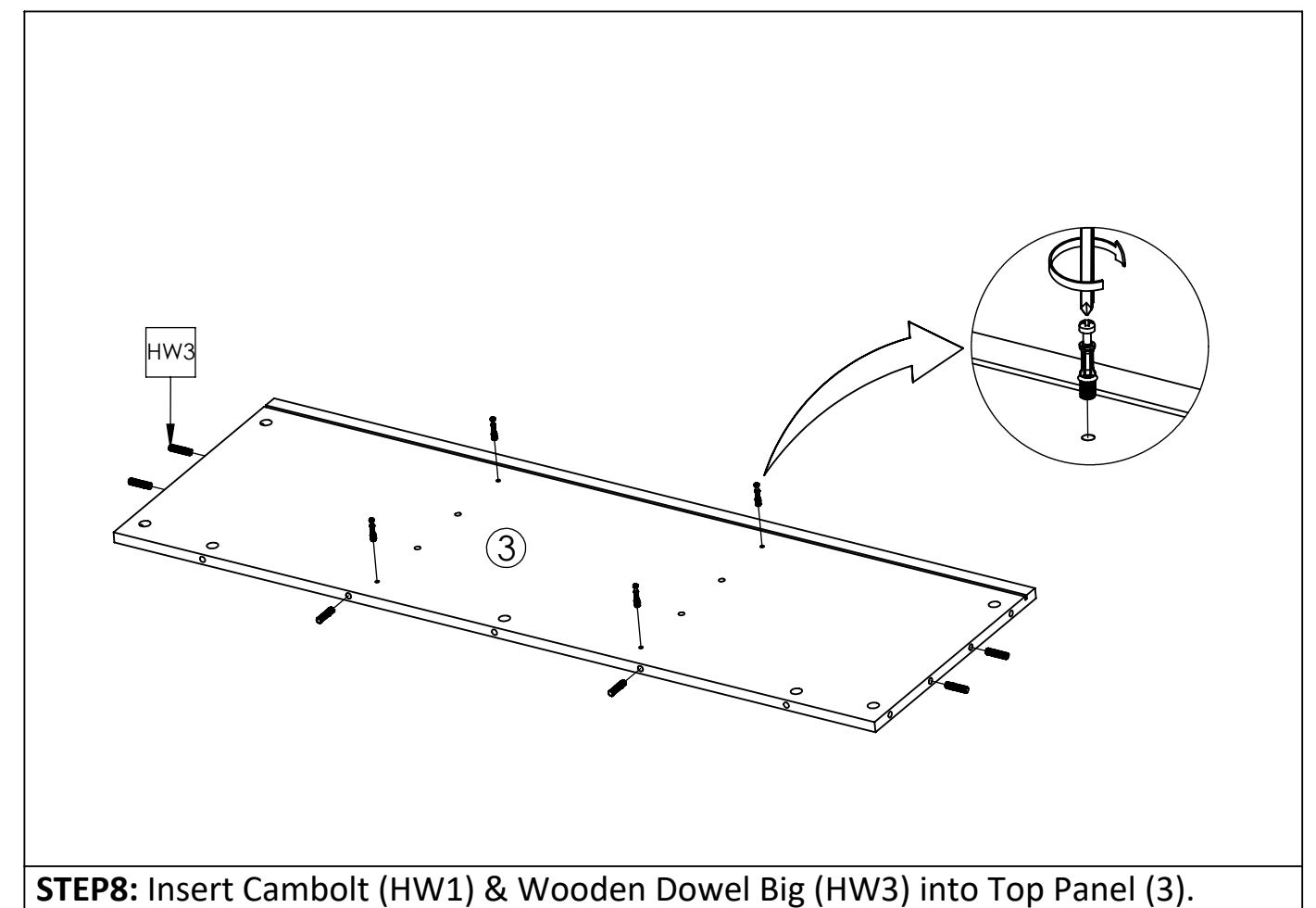
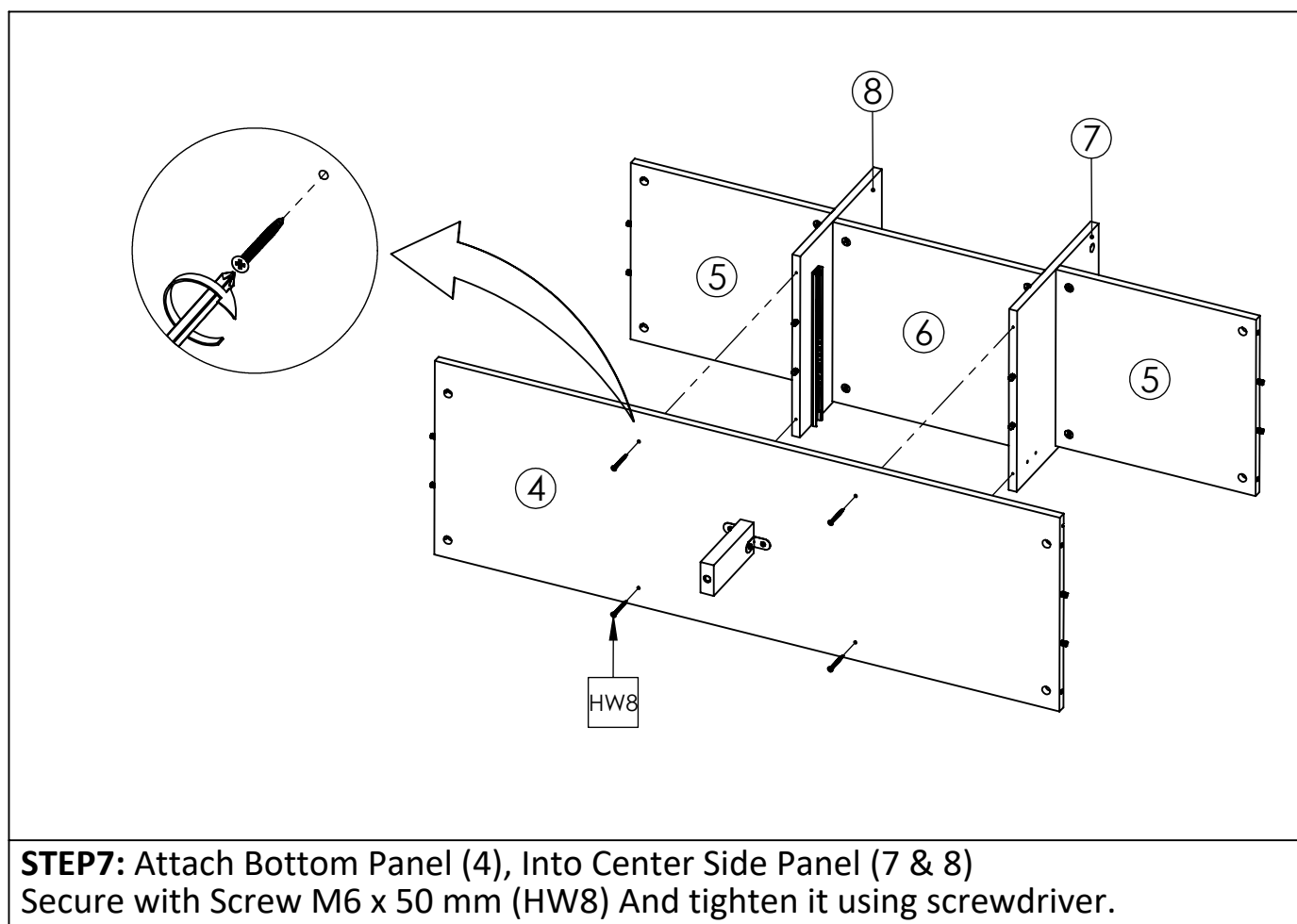
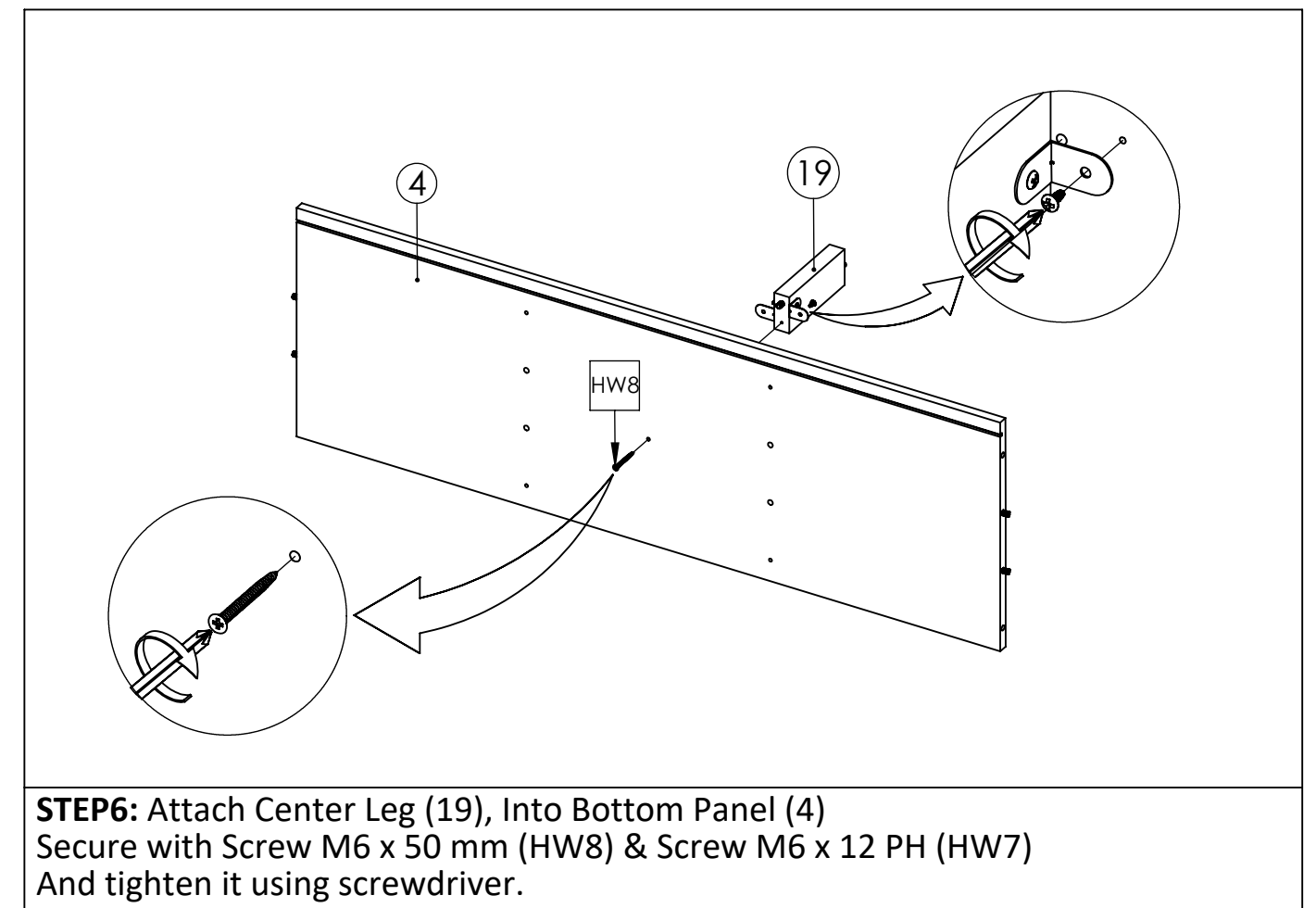
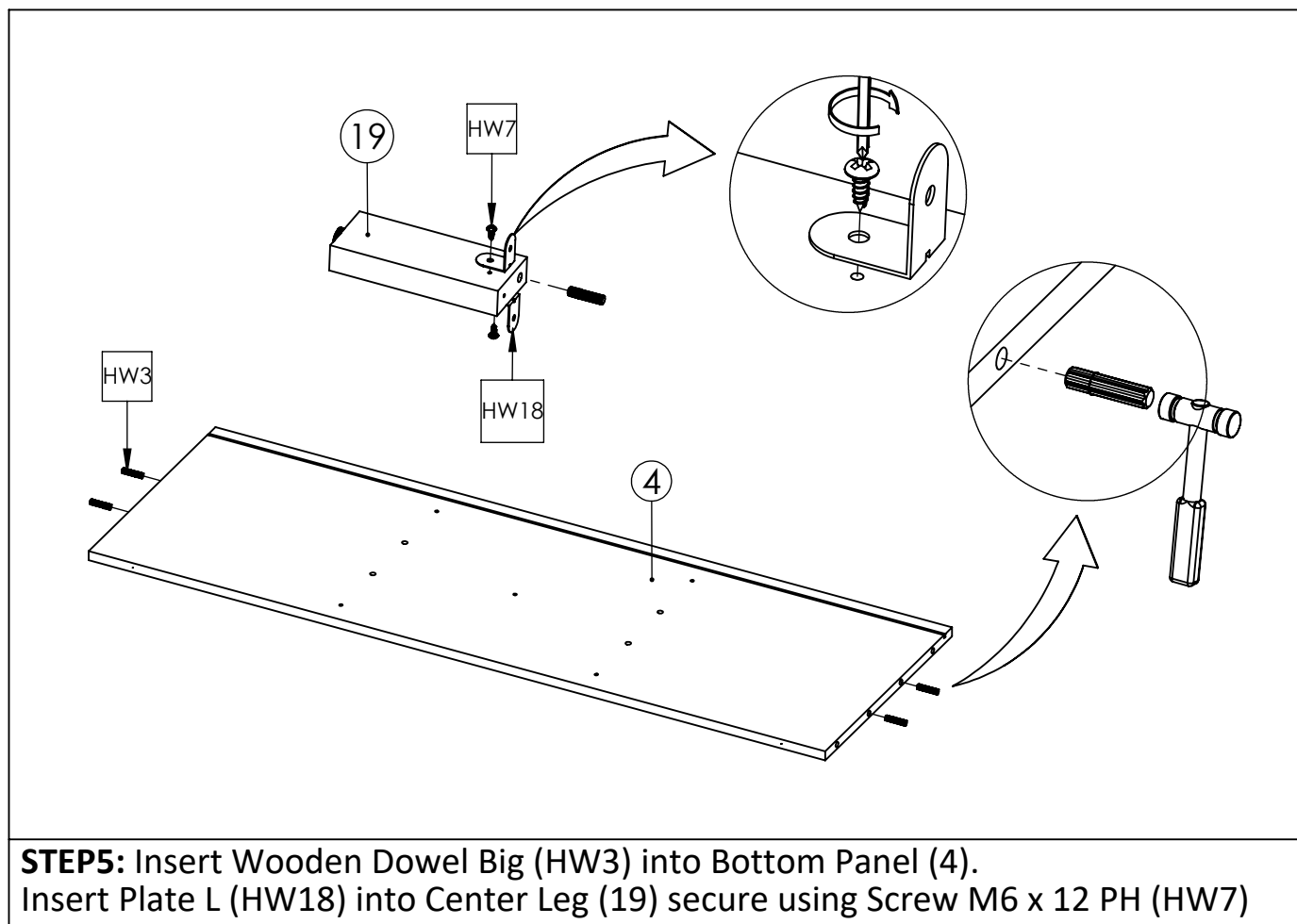
STEP2: Insert Cambolt (HW1) and Wooden Dowel Big (HW3) into Center Left Side Panel (7). Continue with securing part of the metal runner 1 (HW12) into position as the above image, using screw M6x12mm PH (HW7).

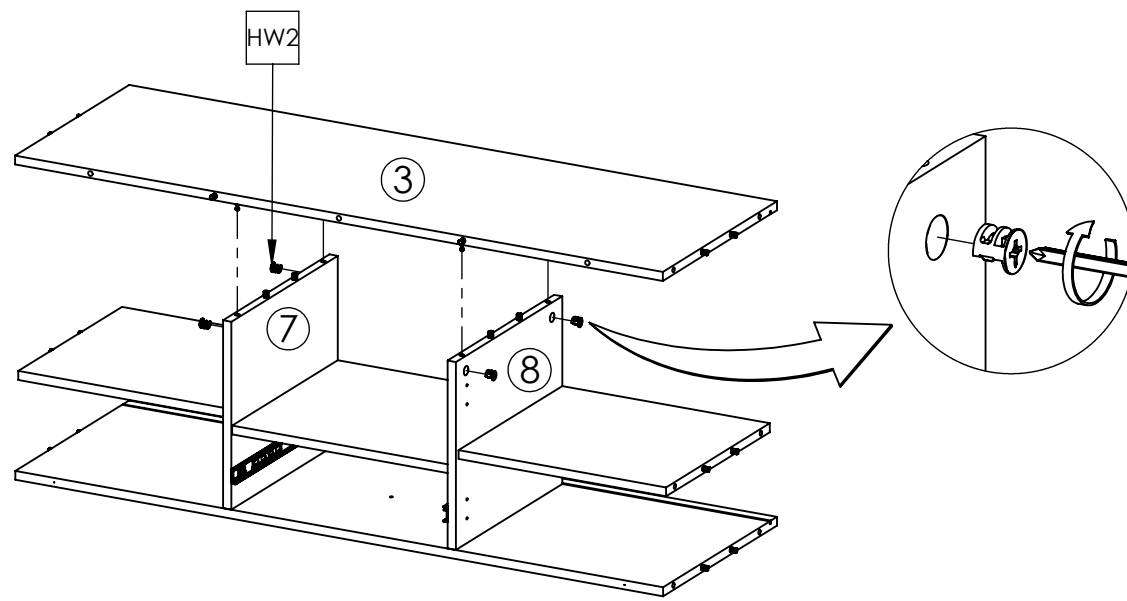


STEP3: Insert Wooden Dowel (HW3) into Side Shelf Panel (5), And Center Shelf Panel (6).

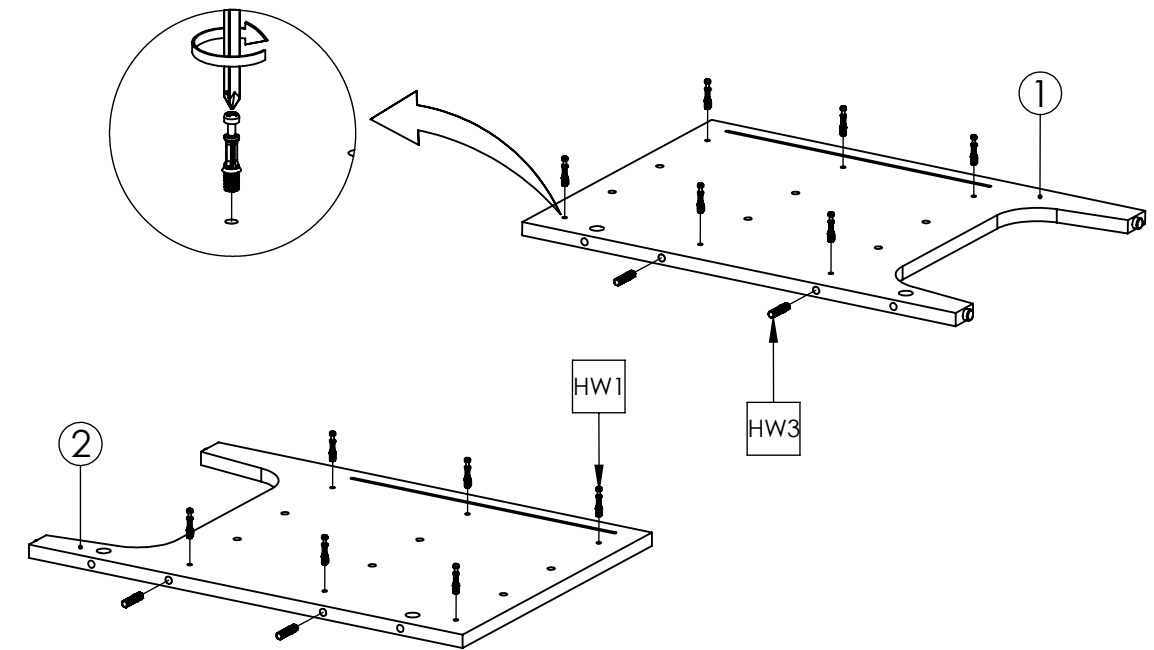


STEP4: Combine Side Panel (7 & 8) Into Center Shelf Panel (6) and Side Shelf Panel (5).secure with screw M7 x 32 mm (HW4) using screwdriver.

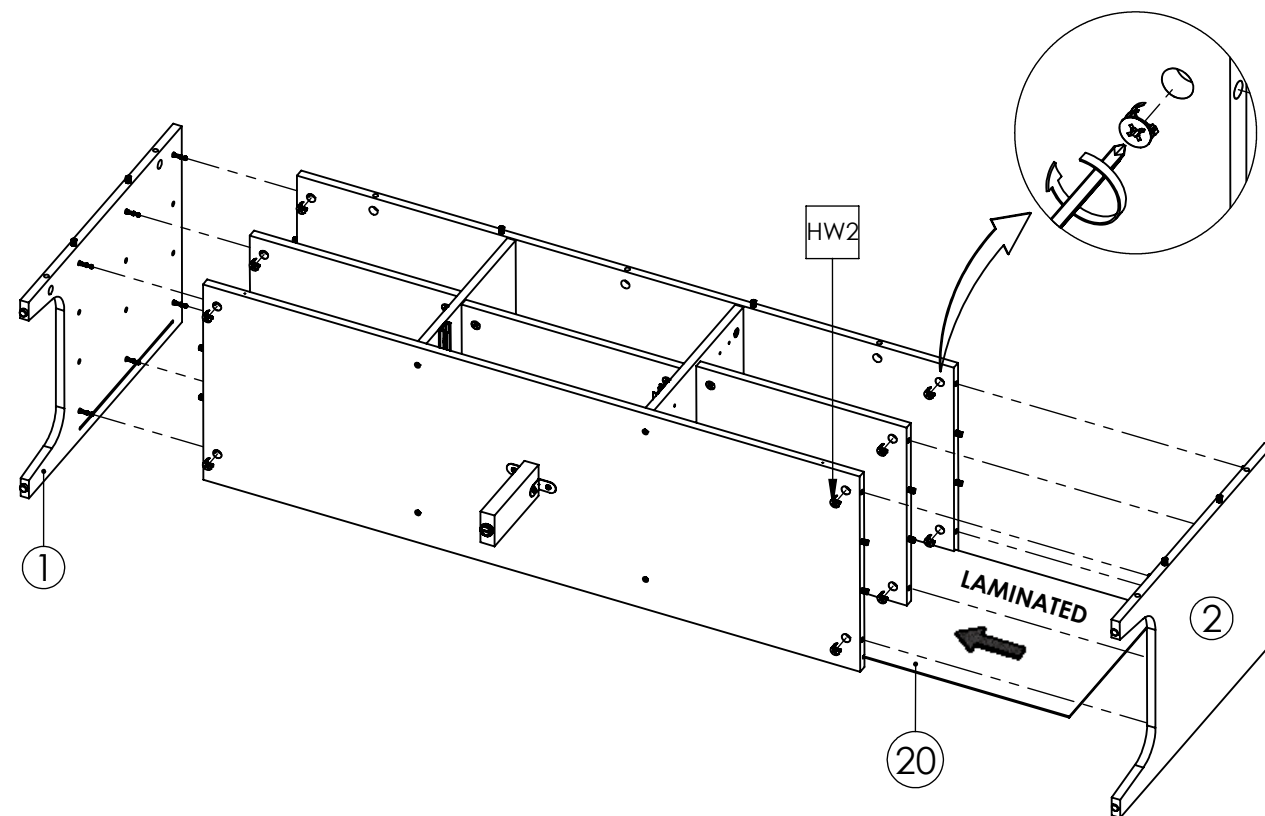




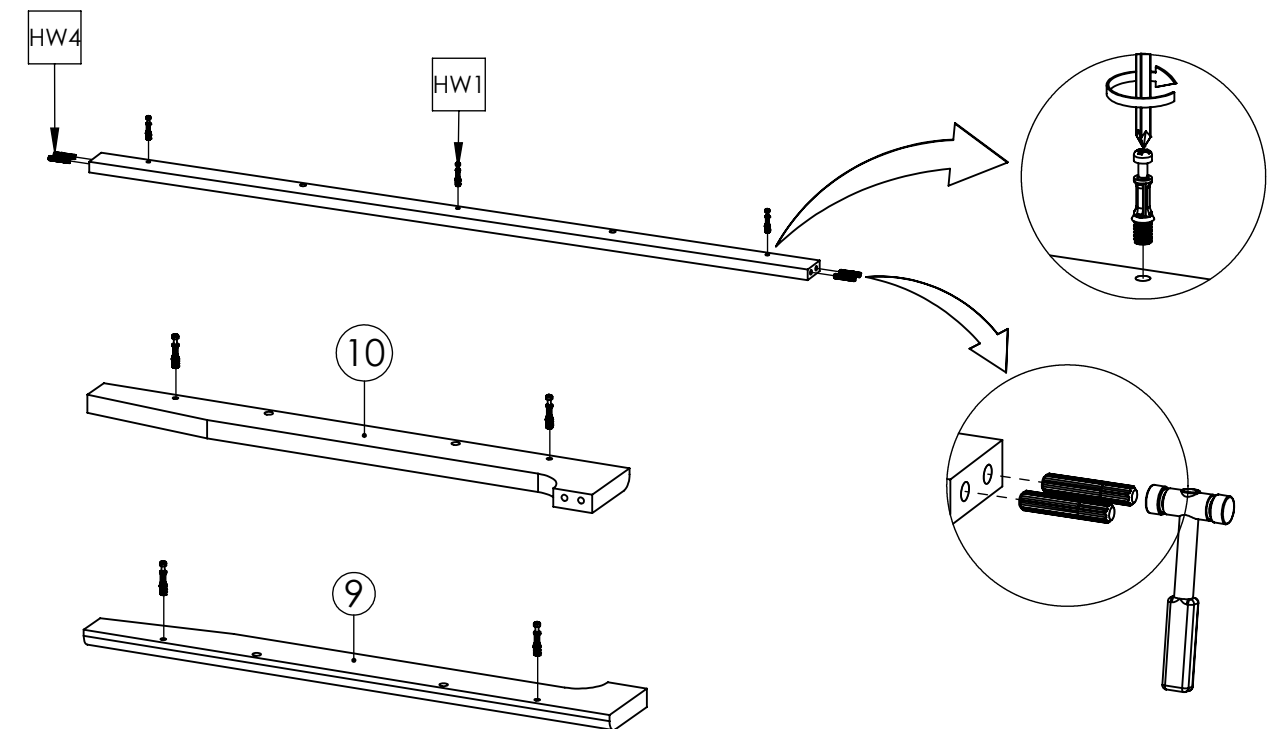
STEP9: Combine Top Panel (3) into Center Side Panel (7 & 8), And tighten Camlock (HW2) using screwdriver. Insert Cambolt (HW1) and Wooden Dowel Big (HW3) into Left Side Panel (1).



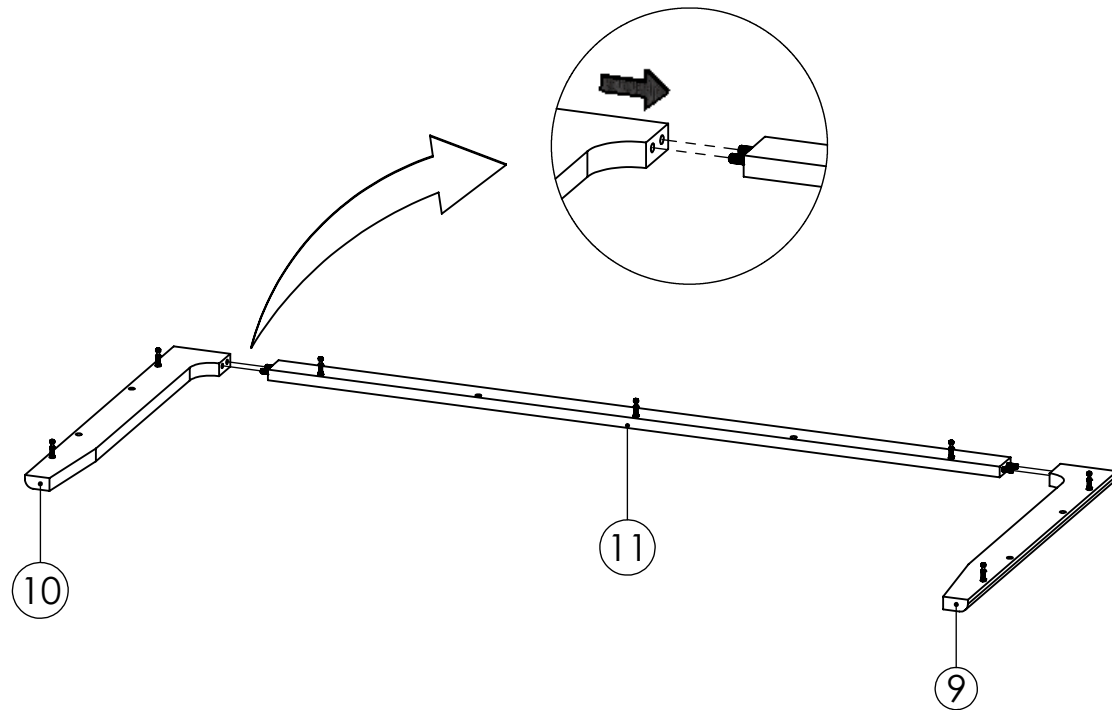
STEP10: Insert Cambolt (HW1) & Wooden Dowel Big (HW3) into Side Panel (1 & 2)



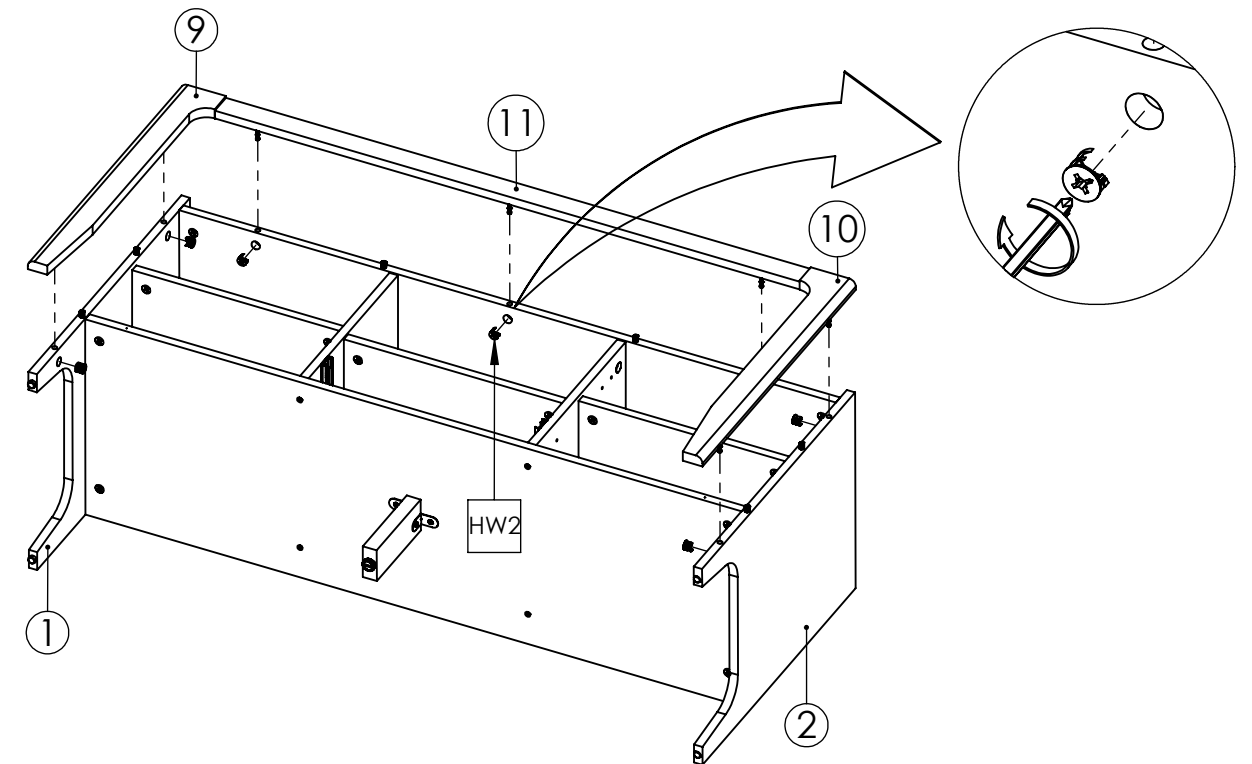
STEP11: Insert Back Panel (20), then put side panel (1 & 2) then tighten camlock (HW2) using screwdriver.



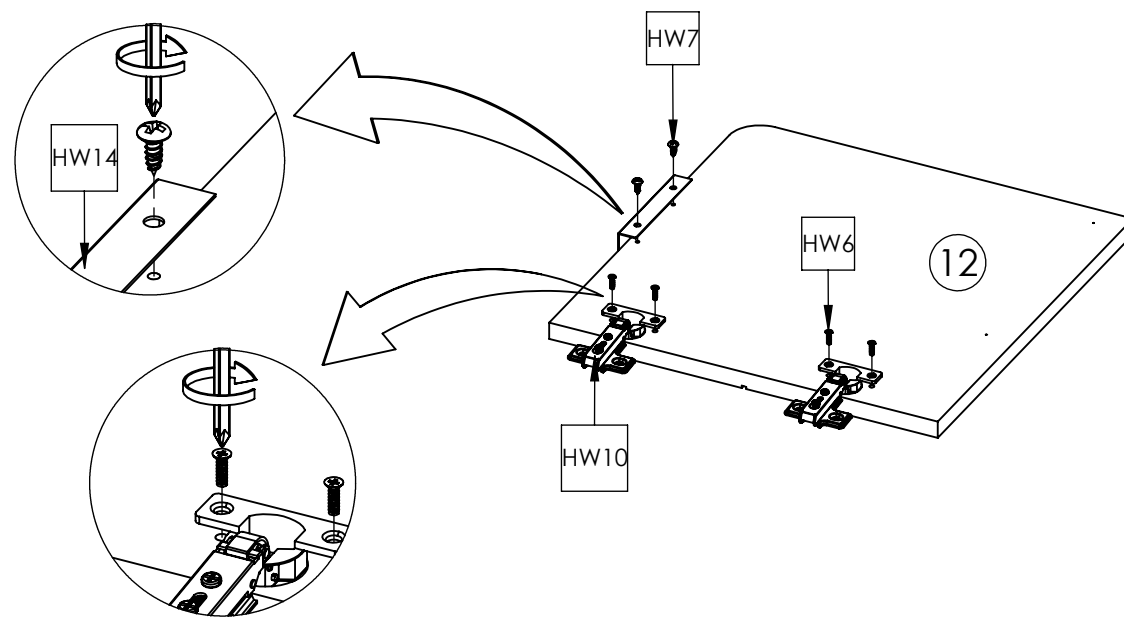
STEP12: Insert Cambolt (HW1) and Wooden Dowel Big (HW3) into Side Front Pillar (9 & 10). Insert Cambolt (HW1)&Wooden Dowel Small (HW4) into Top Support.



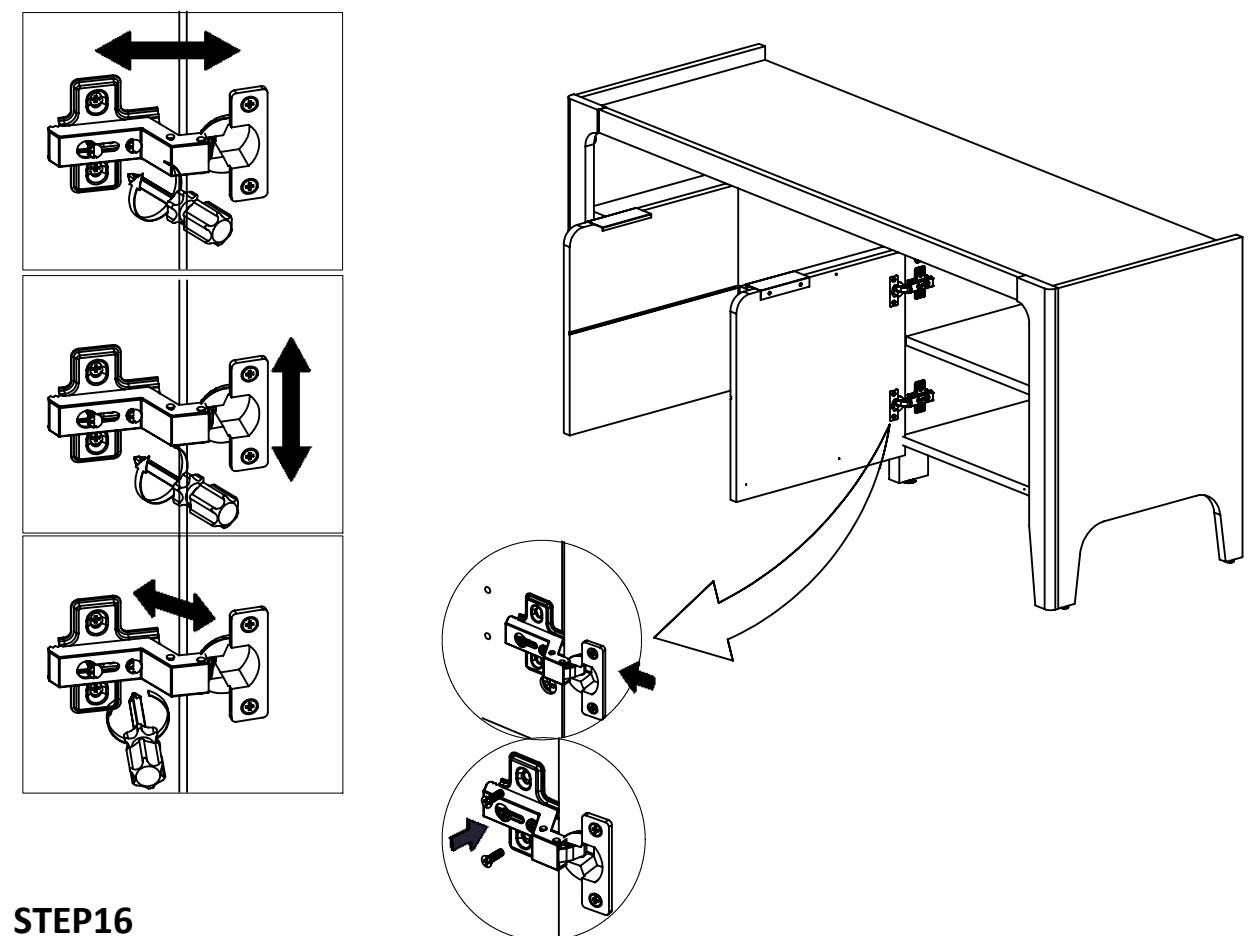
STEP13: Attach Side Front Pillar (9 & 10) into Top Support (11)



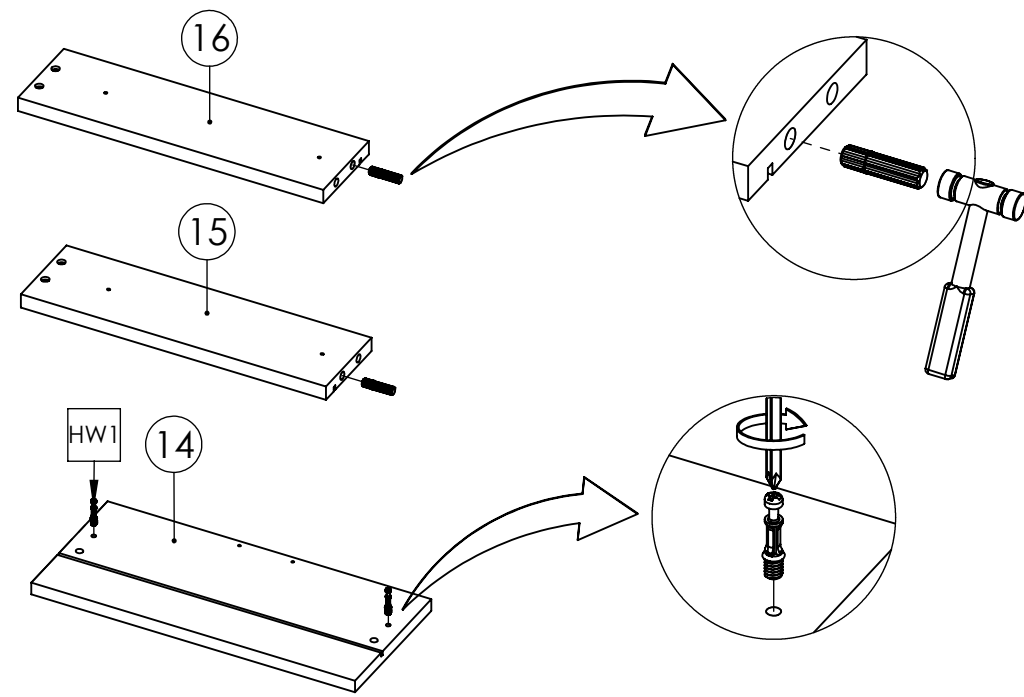
STEP14: Attach Side Front Pillar (9 & 10) & Top Support (11) into Side Panel (1 & 2) and tighten Camlock (HW2) using Screwdriver.



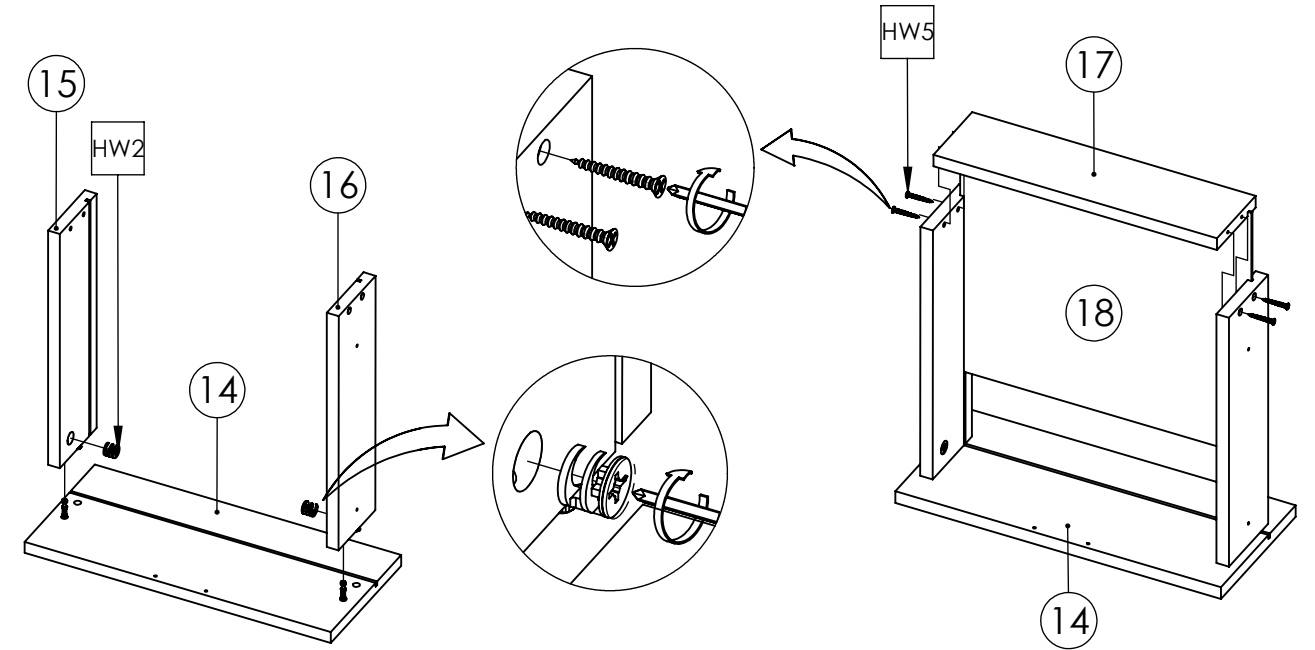
STEP15: Insert Straight Hinge (HW10) into Left Door (12)
Secure With Screw M5 x 12 mm (HW6) and tighten it using Screwdriver,
Continue insert Handle (HW14) into Left Door (12)
Secure with Screw M6 x 12 PH (HW7) and tighten it using Screwdriver.



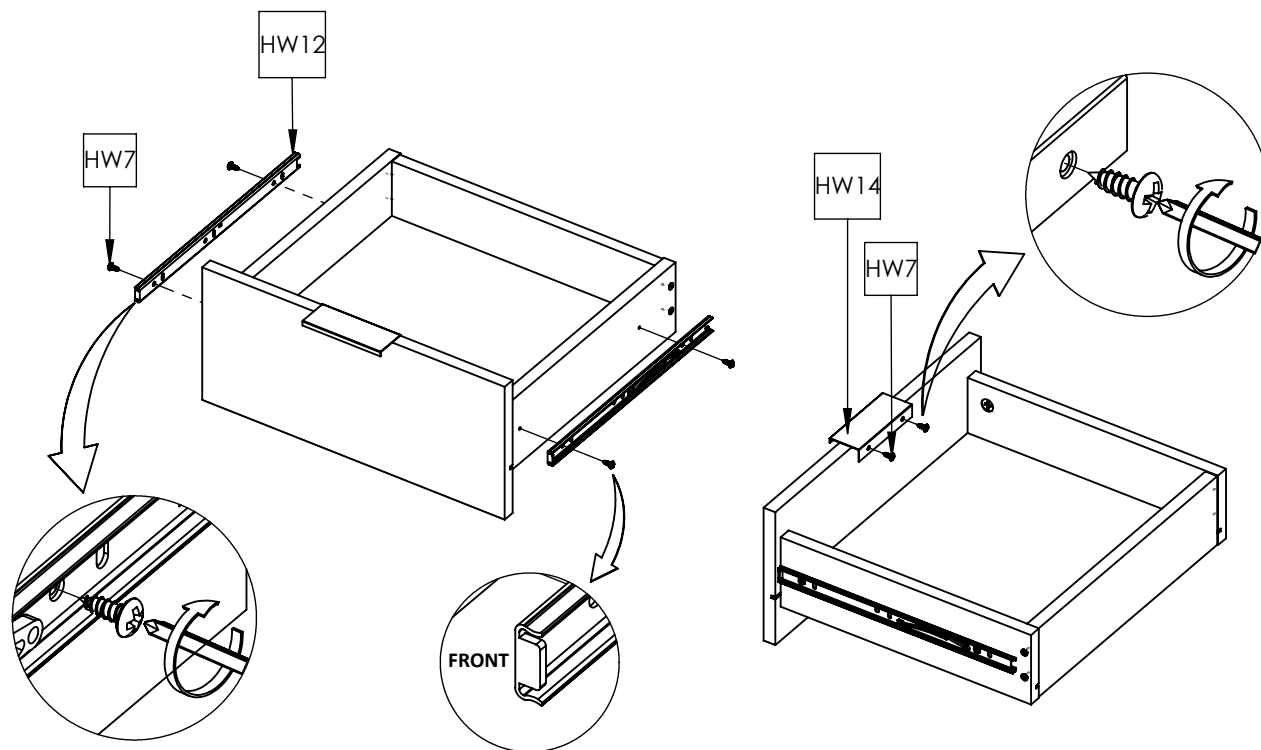
STEP16



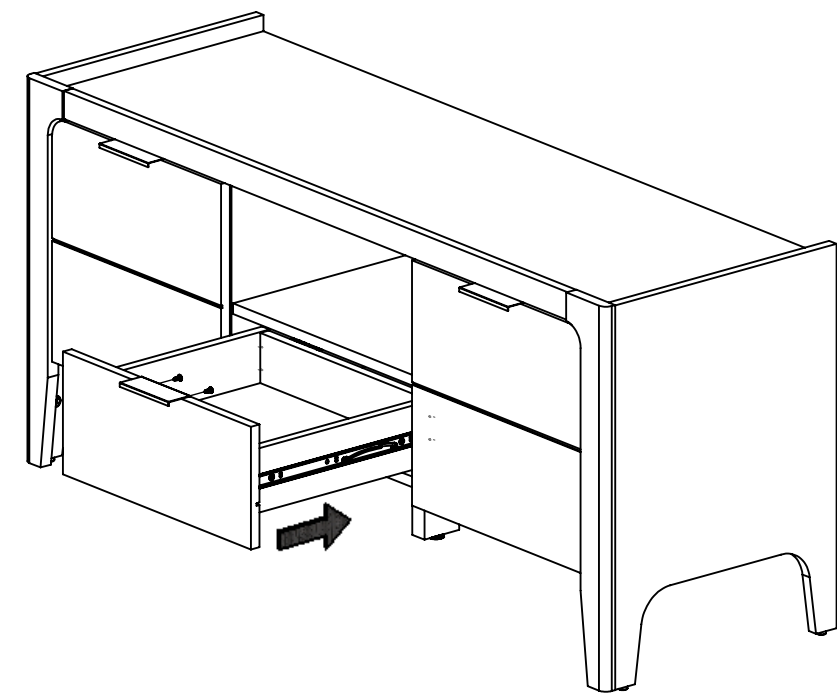
STEP17: insert Cambolt (HW1) into Front Drawer (14).
Insert Wooden Dowel Blg (HW4) into Side Drawer (15 & 16).



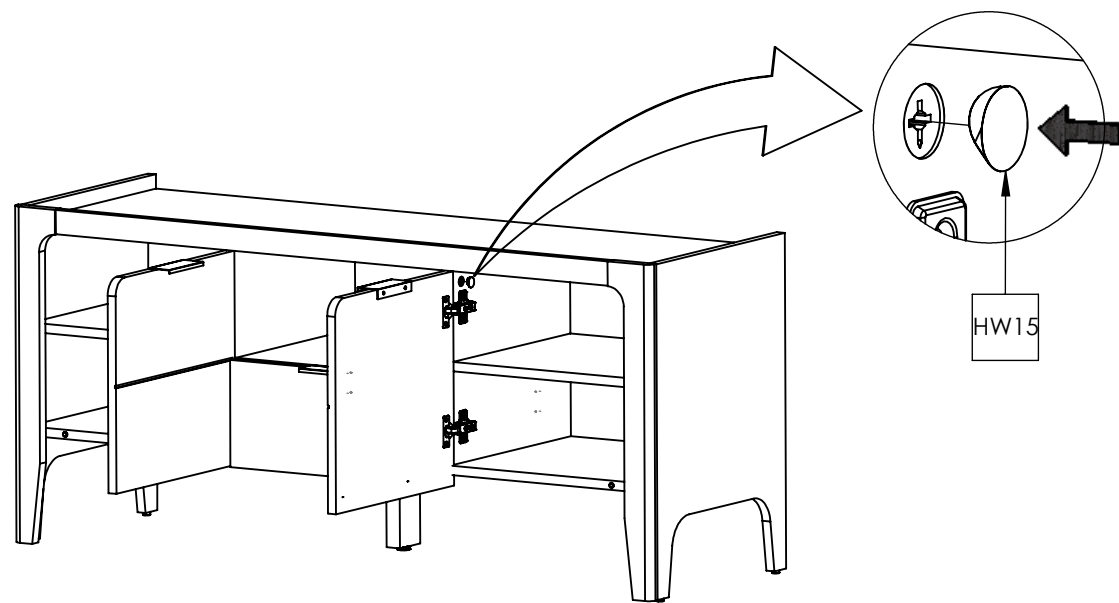
STEP18: Attach Side Drawer (15 & 16), Into Front Drawer (14)
Secure with Camlock (HW2) and tighten it using screwdriver,
Continue insert Drawer Base (18) and Back Drawer (17) then put front drawer (14)
Secure with Screw M7 x 32 mm (HW5) and tighten it using screwdriver.



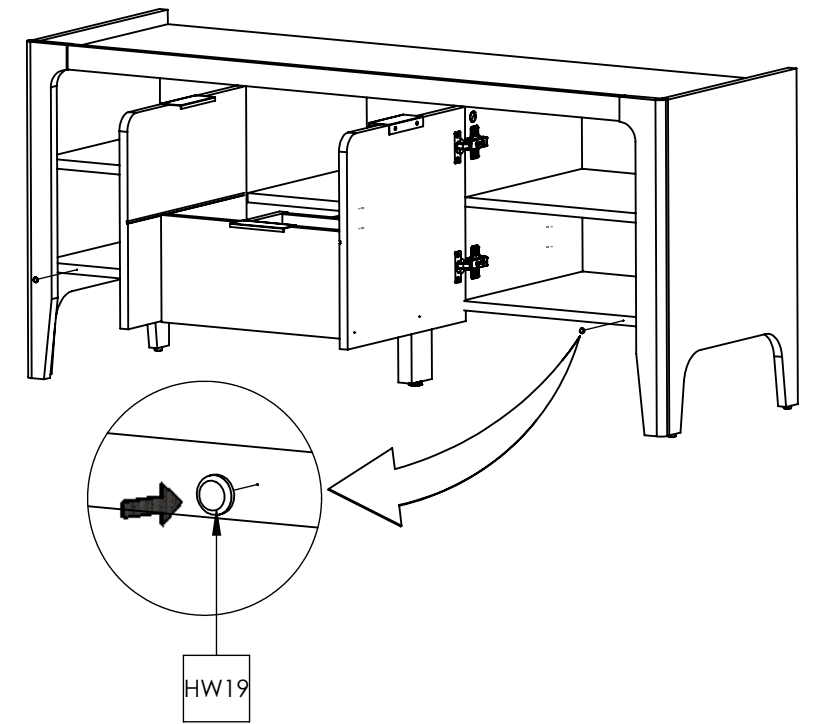
STEP19: Install the metal runner 1 (HW12) into position as shown in picture.
Secure with screw M6x12 PH (HW6) and Tighten It Using Screwdriver.
Continue insert Handle (HW14) into Front Drawer (14),
Secure with Screw M6 x 12 PH (HW7) and tighten it using Screwdriver.



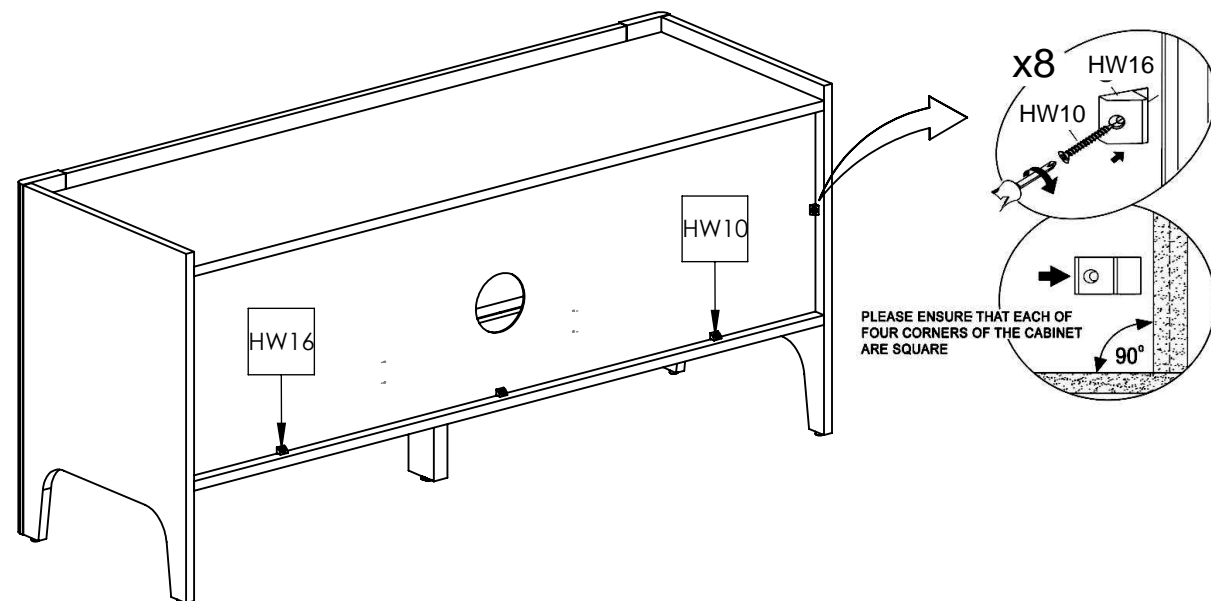
STEP20:



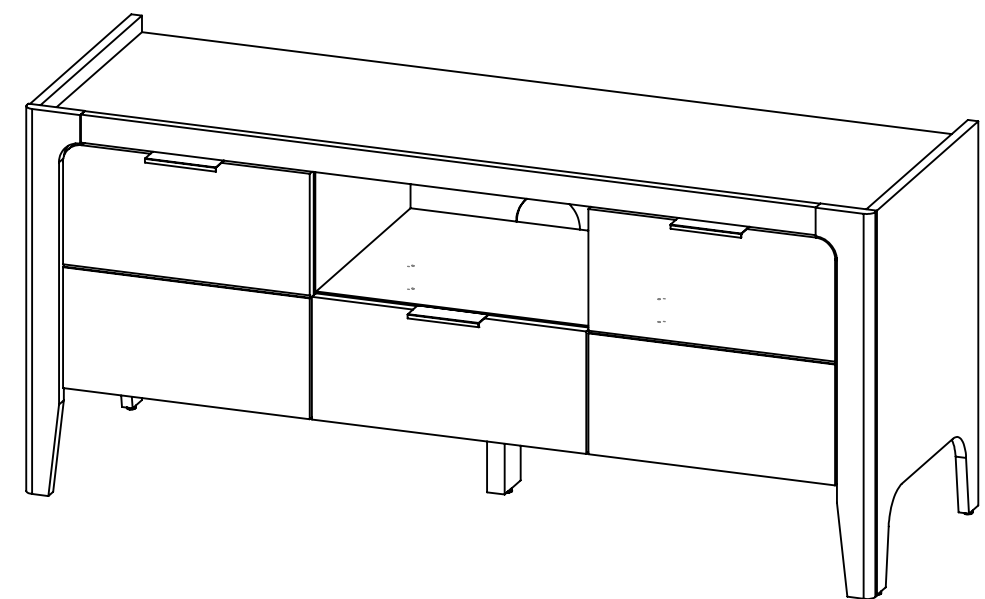
STEP21: After everything is done, attach the cover cap sticker (HW15) to the panel that has lamination.



STEP22: attach Reduce (HW19) Into Bottom Panel (4).



STEP22: Attach the plastic stopper (HW16) to the back panel Secure with screw M4x19 mm (HW10) and tighten it using screwdriver.



STEP23: Assemble is completed.

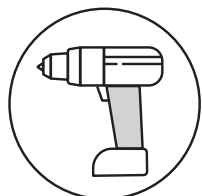


ANTI-TIP RESTRAINT INSTALLATION

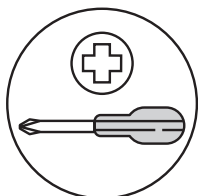
! WARNING!

Children have died from furniture tipover.
To reduce the risk of furniture tipover:

- ALWAYS install tipover restraint provided.
- NEVER allow children to stand, climb or hang on drawers, doors, or shelves.
- NEVER open more than one drawer at a time.
- Place heaviest items in the lower drawers.



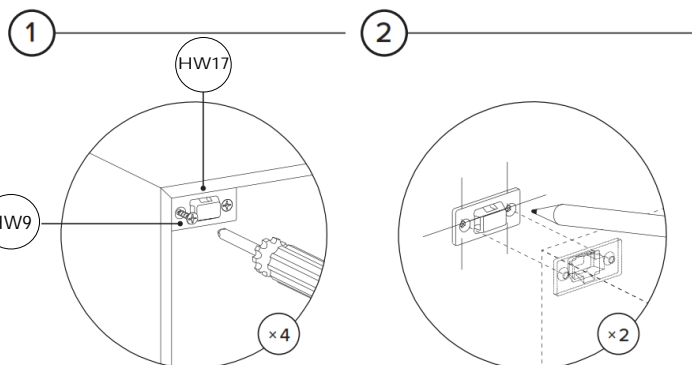
REQUIRED TOOL
8MM / 5/16" DRILL BIT



REQUIRED TOOL

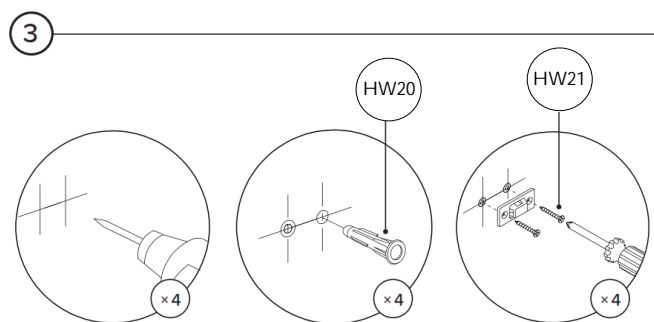


Hardware (HW11 / HW7) to attach brackets to wall is designed for drywall. To attach this unit to another type of wall, consult with your local hardware store.

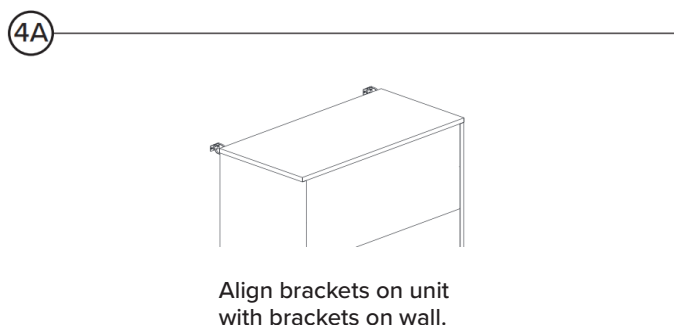


Attach pair of brackets to "Top Panel" of the unit. Note there are no existing pilot holes on the product.

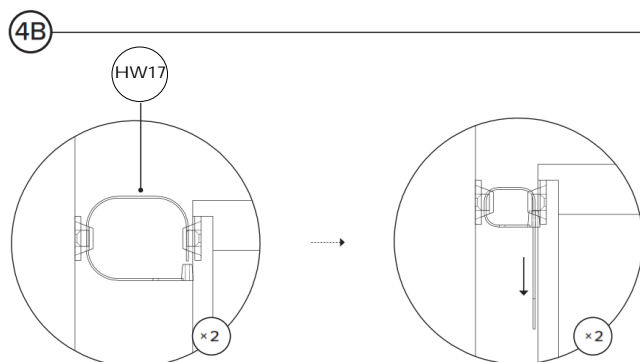
Mark on wall where second pair of brackets should be placed.



Drill holes in wall using 8mm / 5/16" drill bit.

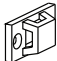

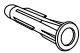
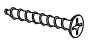



Align brackets on unit with brackets on wall.



Pull strap down until it snap-locks.

ANTI-TIP RESTRAINT PACK

ID	DESCRIPTION	QTY
HW17	BRACKET 	4
HW9	M6 × 15MM SCREW 	4
HW20	M8 × 35MM PLUG 	4
HW21	M10 × 50MM SCREW 	4
HW17	STRAP 	2