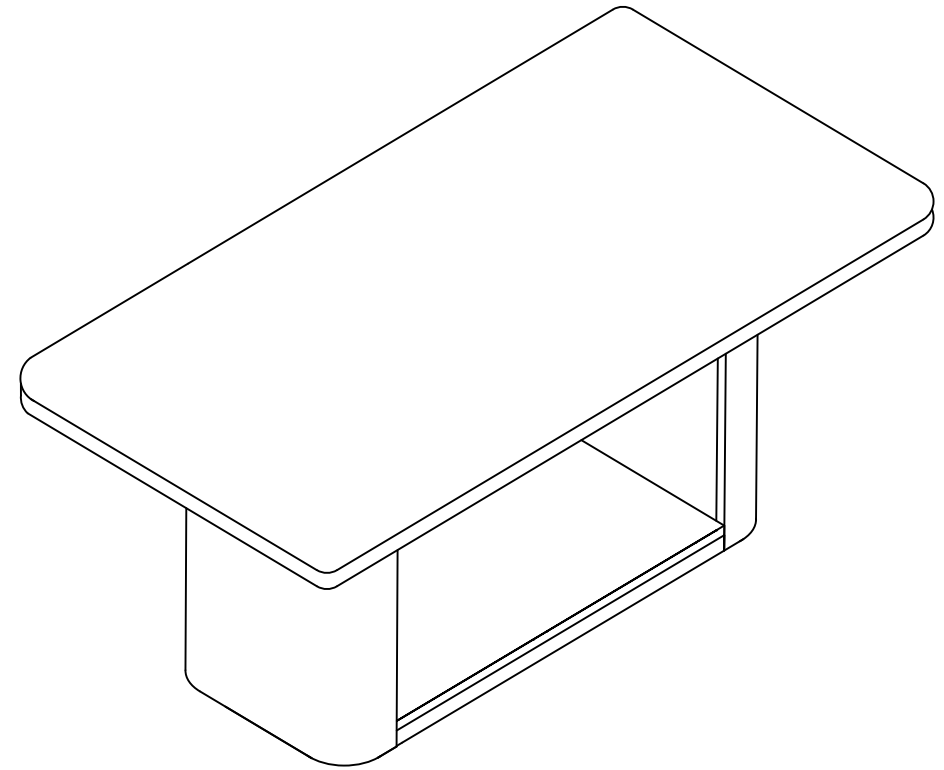


HOWARD OAK WOOD DINING TABLE

DESIGN # SFV7250

Assembly Instructions



Need help?

Feel free to contact us via email or call
if you have any specific questions!

contact us:

cs@safavieh.com

866-422-9070

SAFAVIEH
C O U T U R E

Thanks for bringing Safavieh Couture into your home

Every thing we make is incredibly simple to set up, including your new dining table. You won't need any additional tools.

Parts List

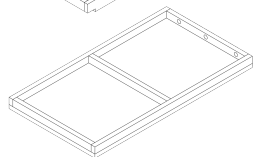
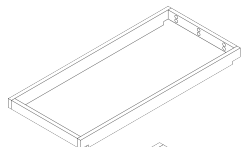
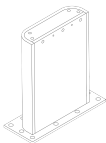
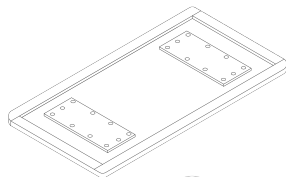
A x 1
TABLE TOP

B x 1
LEG (LEFT)

C x 1
LEG (RIGHT)

D x 1
TOP RAIL

E x 1
BOTTOM RAIL



Hardware List

HW1 x 38
JCBC M8 x 40

HW2 x 38
Spring Washer M8

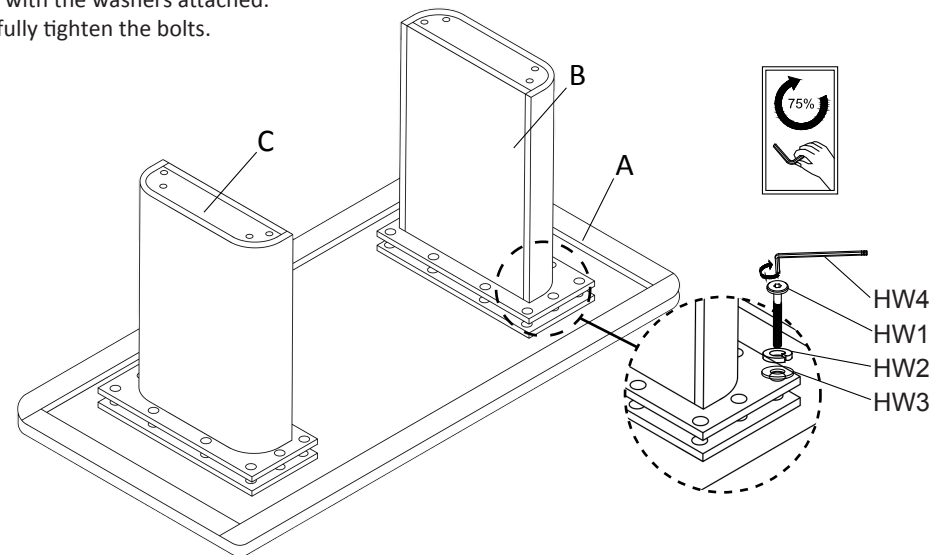
HW3 x 38
Flat washer M8 x 18-RB

HW4 x 1
Allen key



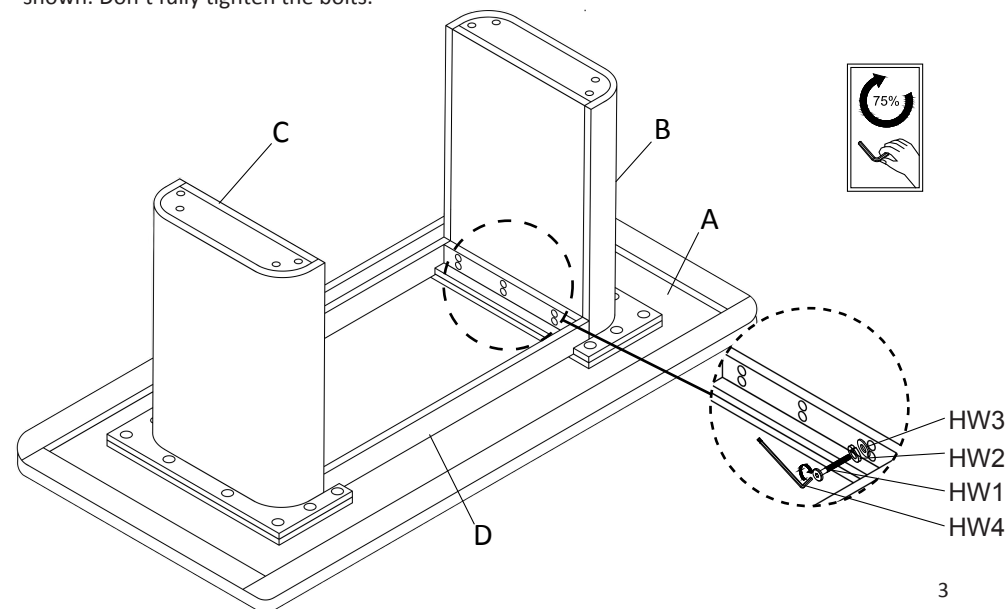
1

Place the Spring Washer (HW2) and the Flat Washer (HW3) on the JCBC bolt (HW1) as shown. Align the screw holes on the bottom of the table top (A) to the screw holes on the Legs (B&C). Attach the table top (A) to the Legs (B&C) by using the Allen Key (HW4) to screw in the bolts (HW1) with the washers attached. Don't fully tighten the bolts.



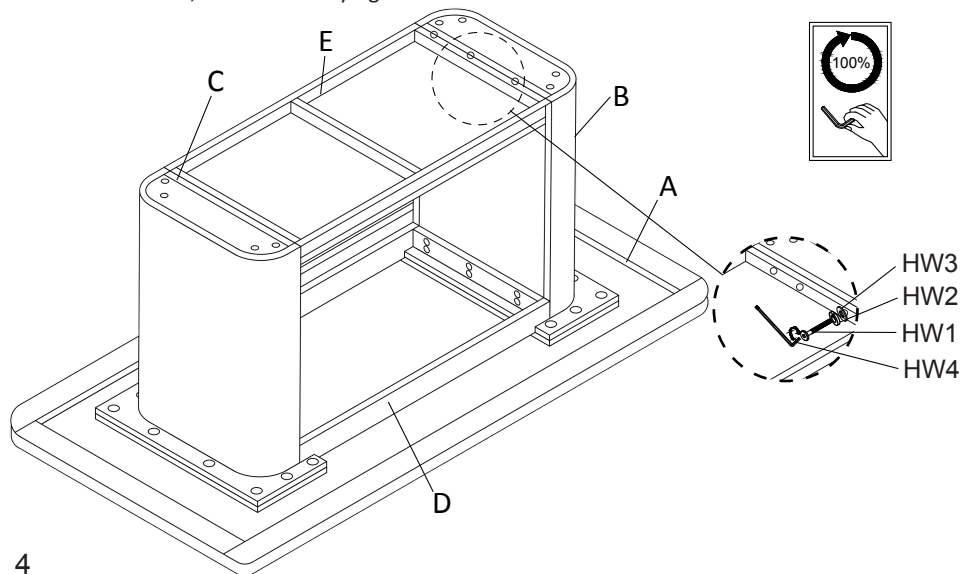
2

Align the screw holes on the top rail (D) to the screw holes on the legs (B&C). Attach the top rail (D) by using the Allen Key (HW4) to screw in the JCBC bolts (HW1) with the washers attached, as shown. Don't fully tighten the bolts.



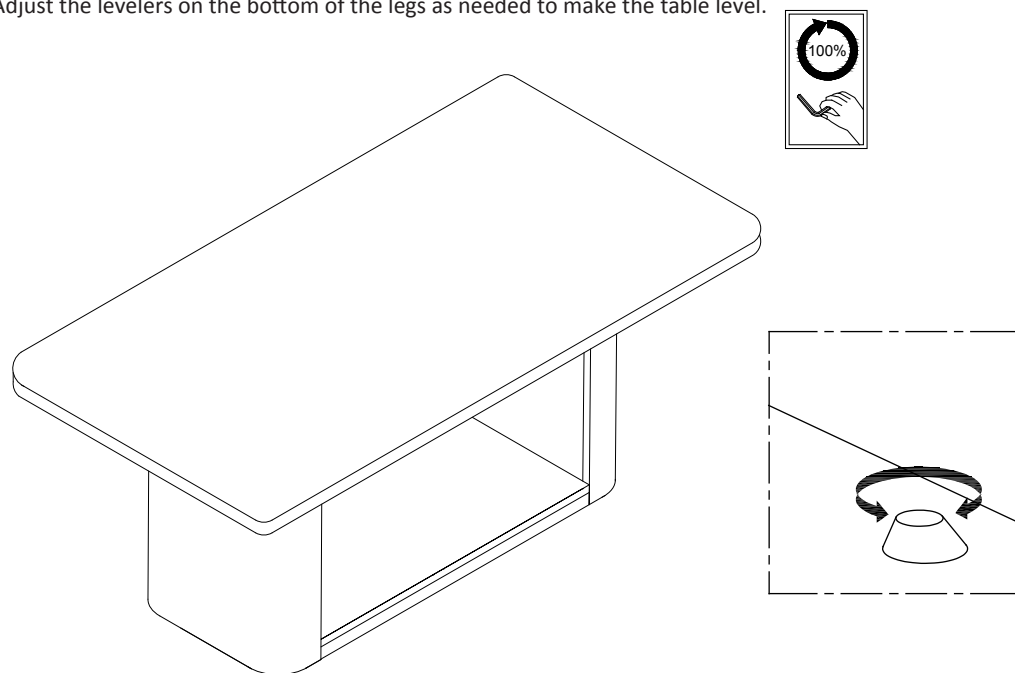
3

Align the screw holes on the bottom rail (E) with the screw holes on the bottom of the legs (B&C). Attach the bottom rail (E) by using the Allen Key (HW4) to screw in the JCBC bolts (HW1) with the washers attached, as shown. Fully tighten all the bolts.



4

Adjust the levelers on the bottom of the legs as needed to make the table level.



5

Place the dining table in the place where you will use it. We'd love to see it – just tag us (we're @safavieh) and use the hashtag #safavieh on Instagram!

