

NOTICE

*Please make sure that you have all part indicated and they are in good condition before you begin assembly of this item. Refer to part list and hardware list below for guidance.

*This item should be assembled on a soft surface to prevent scratching the finish during assembly.

*This item may require periodic tightening.

*If you are having difficulty, our friendly Customer Care team is always here to help. Please email customersupport@safavieh.com

PREPARATION

*Before beginning assembly of product, make sure all part are present. Compare part with part contents list and hardware contents list.

*If any part is missing or damaged, do not attempt to assemble the product.

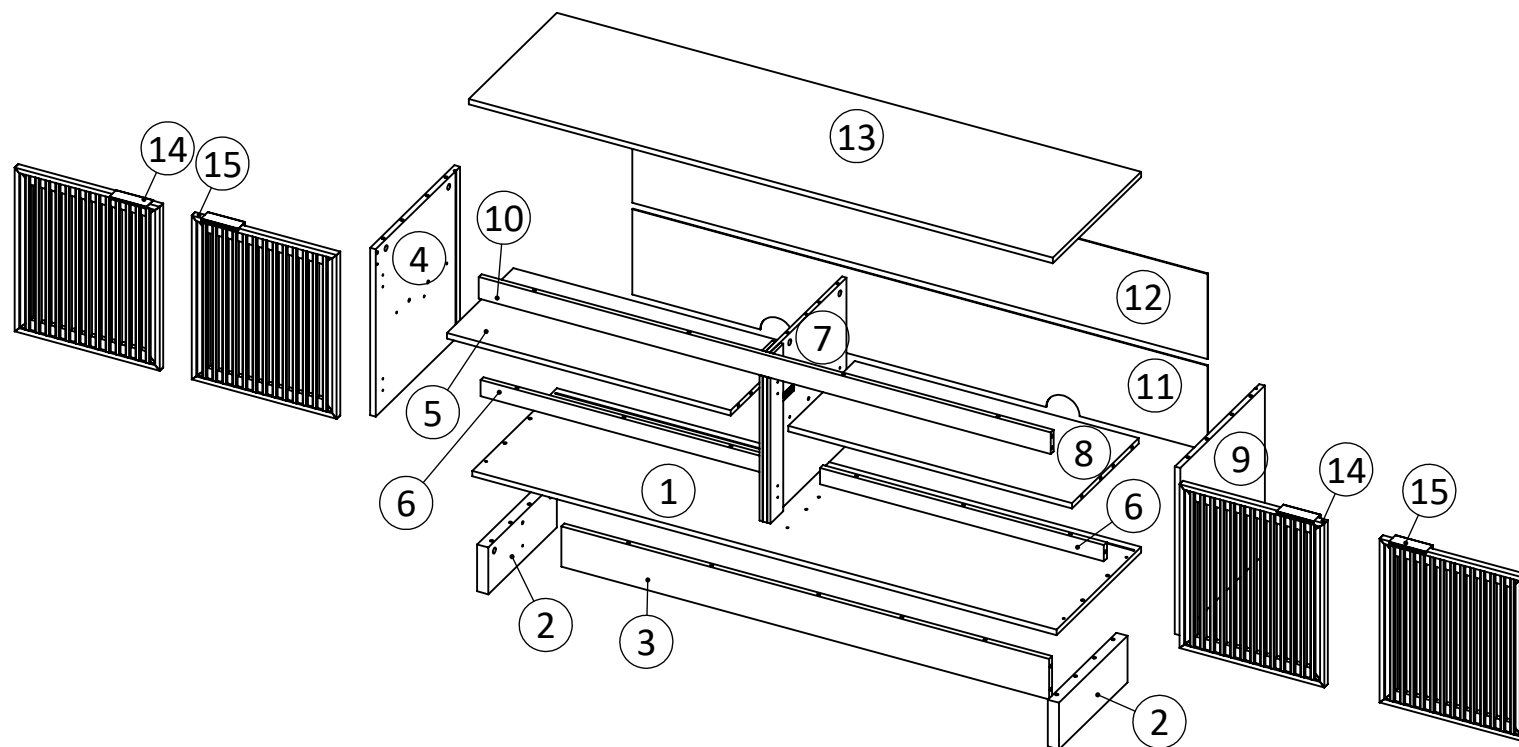
*Estimated Assembly Time: 60 minutes.

*Tools Required for Assembly (Not included): Screwdriver

CARE AND MAINTENANCE

Adhesive felt pads should always be applied to areas of furniture which make direct contact with flooring, said application will prevent damage to the furniture and or surfaces on which the furniture lies. Objects placed on articles of furniture should rest on non abrasive material as to prevent damage to the wood finish. Objects whose composition consists of plastic and rubber are known to discolor and damage the wood surfaces on which they rest. Wipe up spills immediately and avoid common hazards such as hot dishes, harsh solvents and abrasives. Cleaning should be done with a soft lint free cotton cloth dampened with water or furniture polish. On highly used surfaces we recommend applying a quality paste wax which should be used on a regular basis to provide additional protection from scratches and spills. How often you apply the wax depends on how much wear the furniture receives.

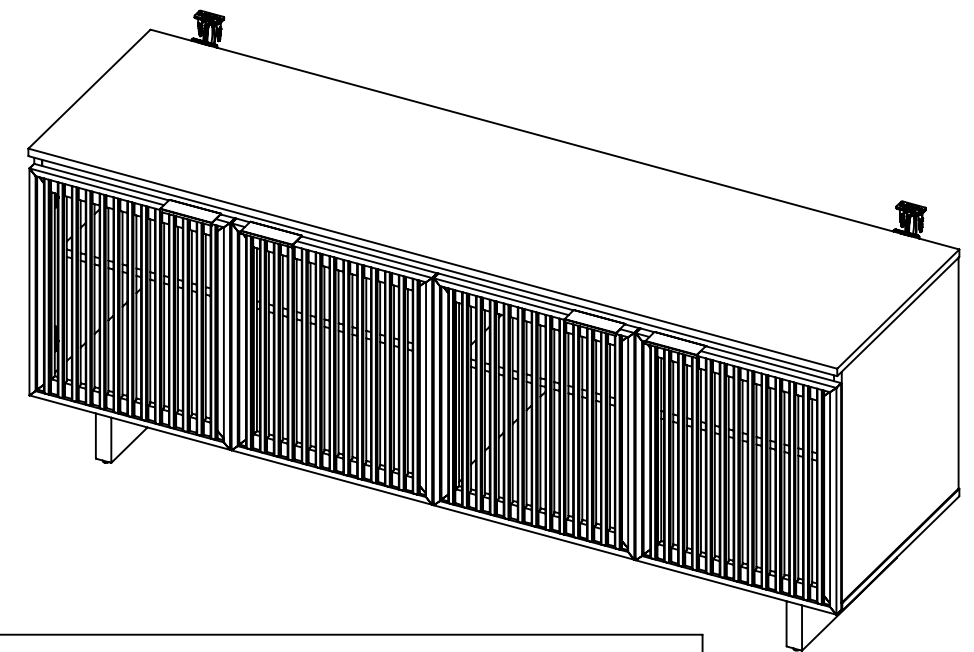
Part List



 **SAFAVIEH**
FURNITURE

Model#MED3103

Product Dimensions: W 61.93" x D 17.72" x 24.84"



WARNING

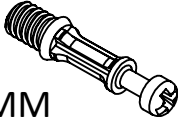
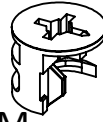
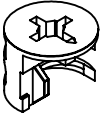
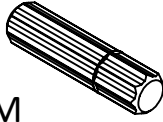
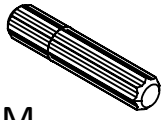
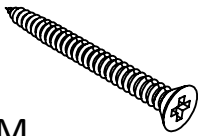
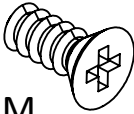
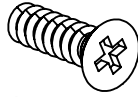
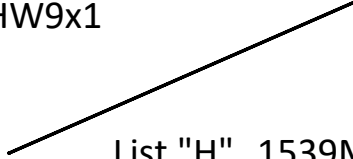
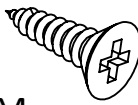
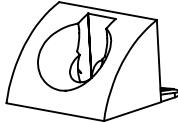
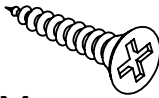
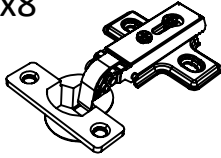
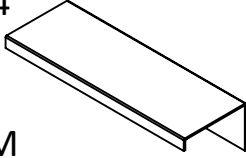
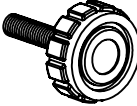
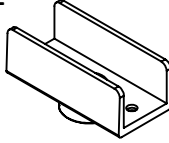
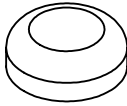
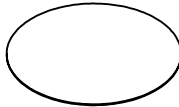
This product is intended for use with a
FLAT SCREEN TV ONLY
Maximum Screen size : 70 Inches
Weight limit : 76 lbs
Shelf load limit : 28 lbs
Use with heavier televisions may result
in instability causing tip over resulting in
death or serious injury.

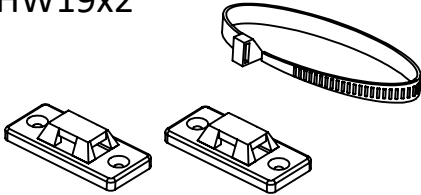
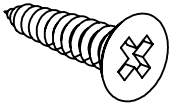
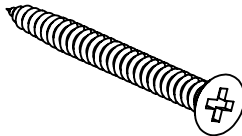
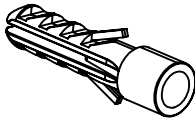


WARNING

Death or serious injury may occur
when children climb on audio
and/or video equipment furniture.
A remote control of toys placed on
the furnishing may encourage a
child to climb on the furnishing and
as a result the furnishing may tip
over on to the child

Hardware List

<div>HW1x33</div> <div></div> <div>Ø6X32MM</div>	<div>HW2x31</div> <div></div> <div>Ø15x12MM</div>	<div>HW3x2</div> <div></div> <div>Ø15x9,6MM</div>	<div>HW4x32</div> <div></div> <div>Ø8x32MM</div>	<div>HW5x4</div> <div></div> <div>Ø6x30MM</div>	<div>HW6x6</div> <div></div> <div>Ø6x50MM</div>
<div>HW7x16</div> <div></div> <div>Ø5x8.5MM</div>	<div>HW8x16</div> <div></div> <div>Ø5x12MM</div>	<div>HW9x1</div> <div></div> <div>List "H" 1539MM</div>	<div>HW10x12</div> <div></div> <div>Ø6x12MM</div>	<div>HW11x16</div> <div></div> <div>Ø4x19MM</div>	<div>HW12x16</div> <div></div> <div>Ø4x19MM</div>
<div>HW13x8</div> <div></div> <div></div>	<div>HW14x4</div> <div></div> <div>100 MM</div>	<div>HW15x2</div> <div></div> <div></div>	<div>HW16x2</div> <div></div> <div></div>	<div>HW17x4</div> <div></div> <div></div>	<div>HW18x33</div> <div></div> <div></div>

Anti-tip restraint pack	
<div>HW19x2</div> <div></div> <div></div>	<div>HW20x4</div> <div></div> <div>Ø6x15MM</div>
<div>HW21x4</div> <div></div> <div>Ø10x50MM</div>	<div>HW22x4</div> <div></div> <div>Ø8MM</div>

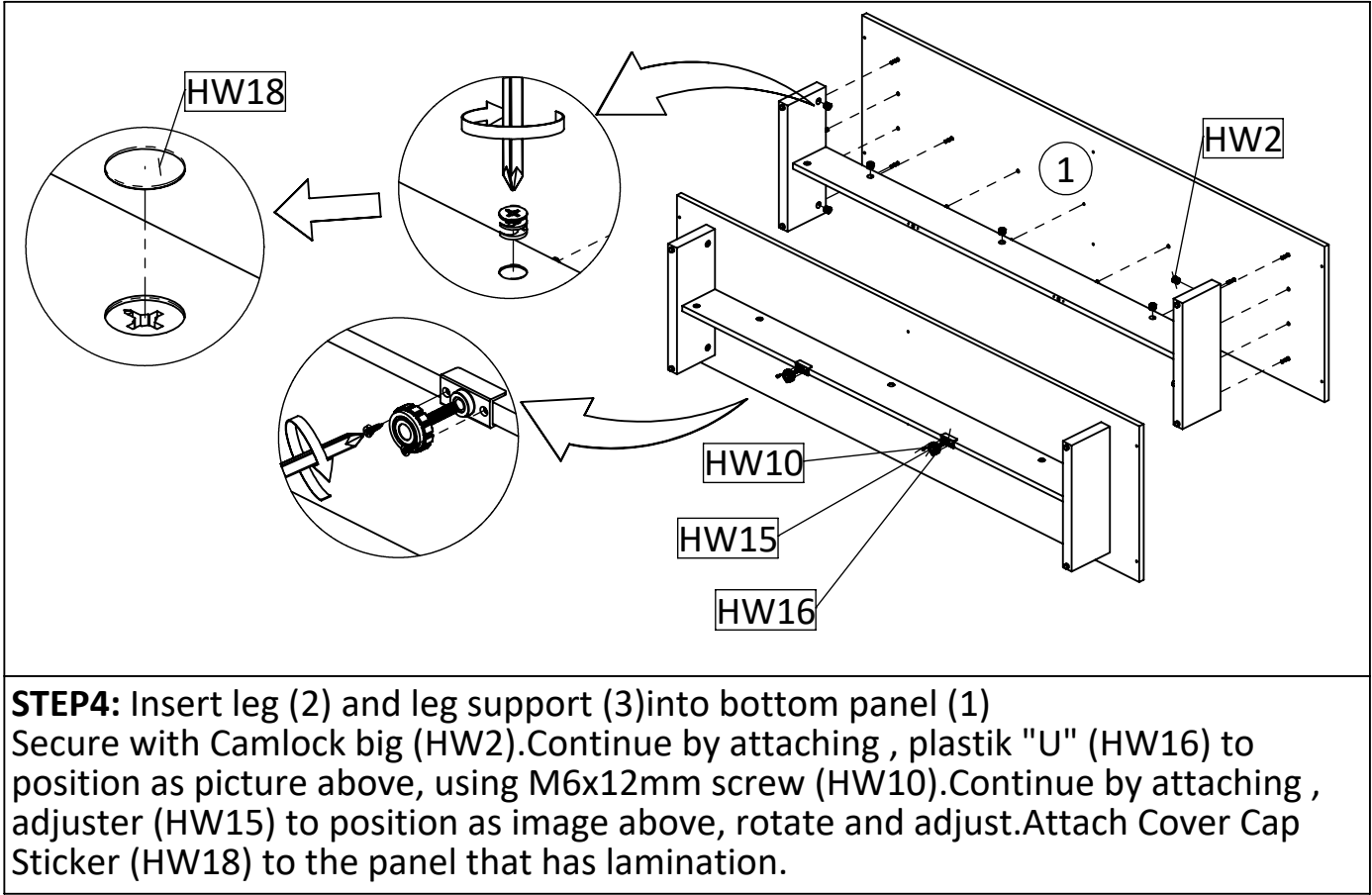
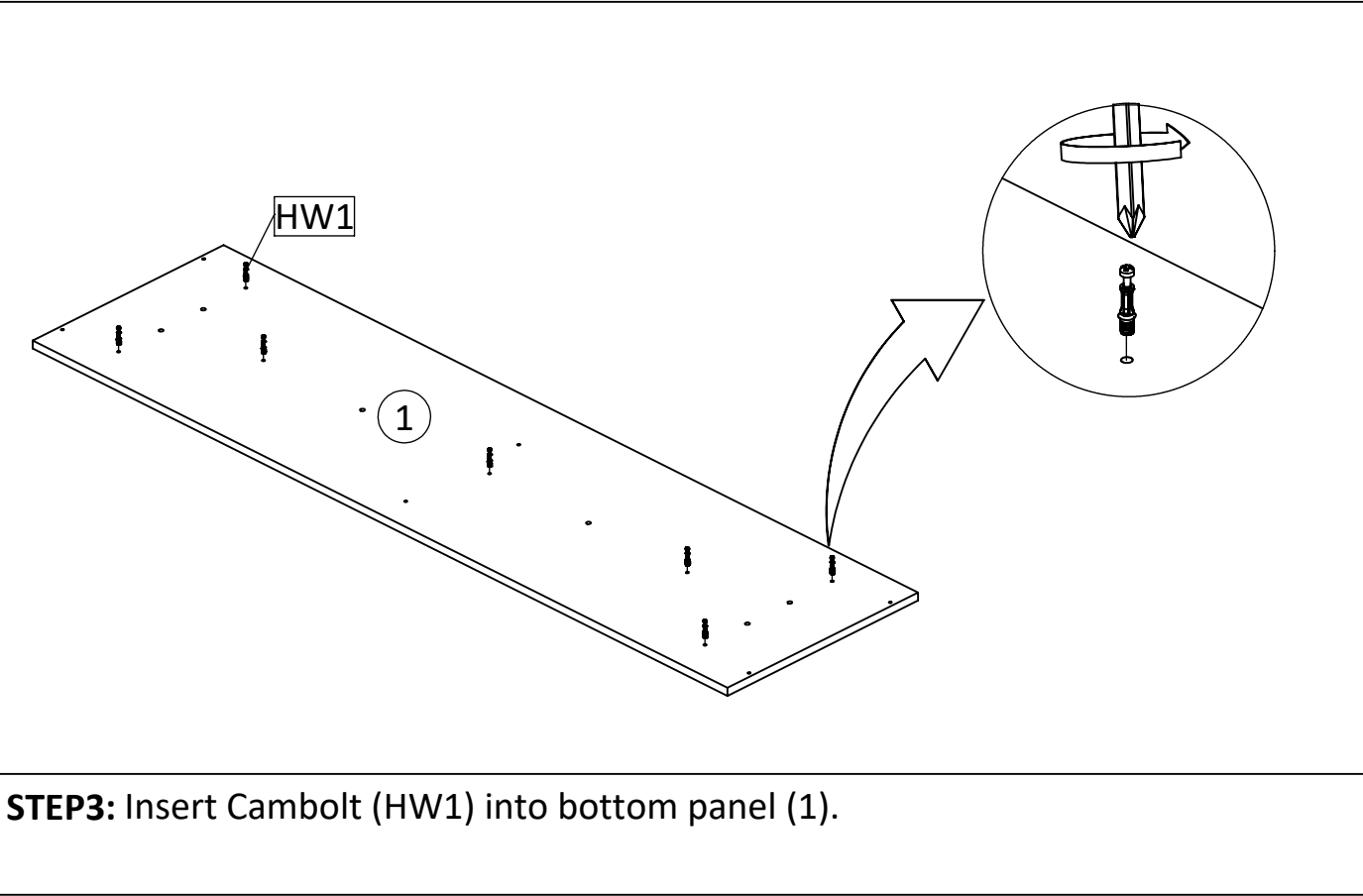
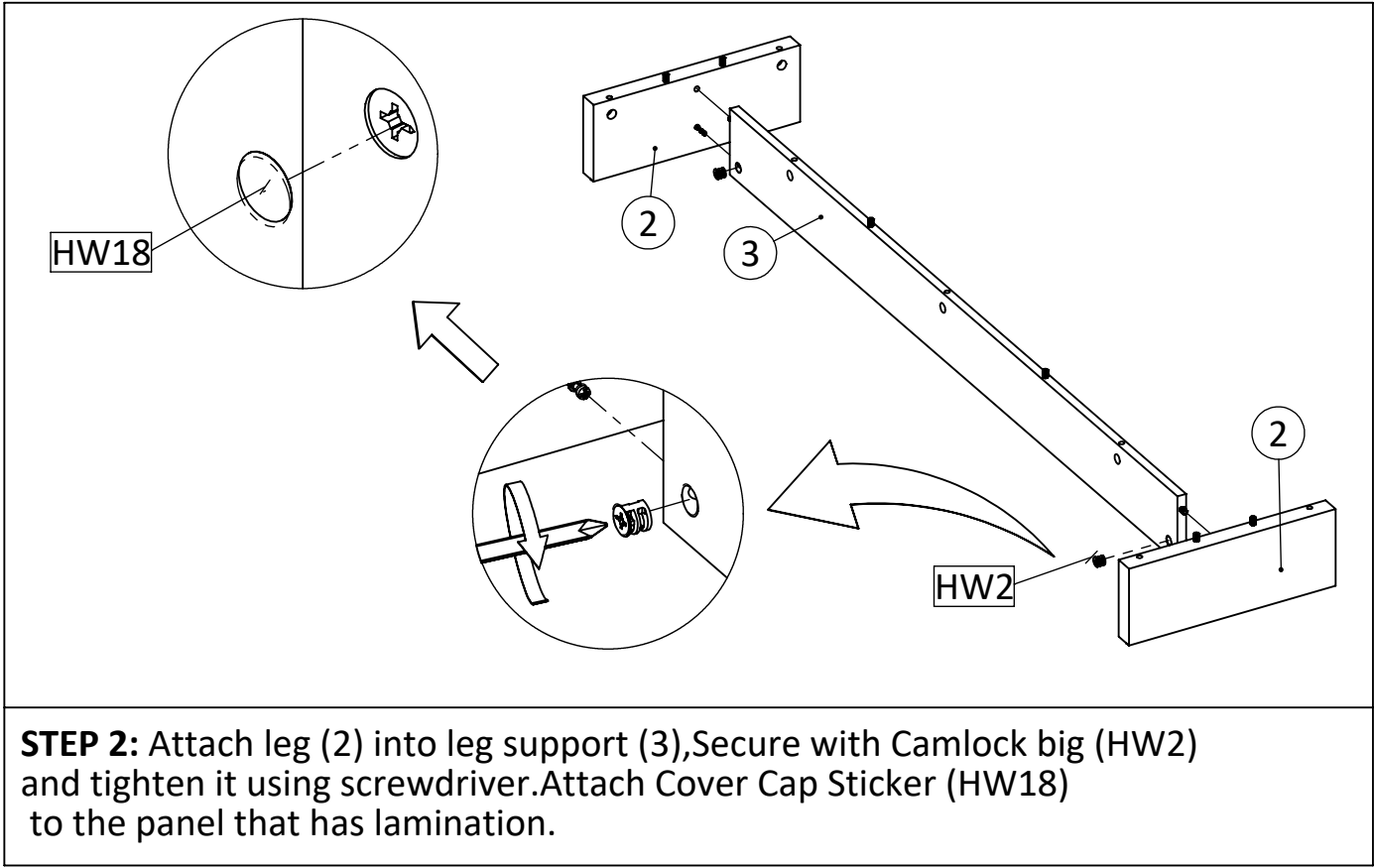
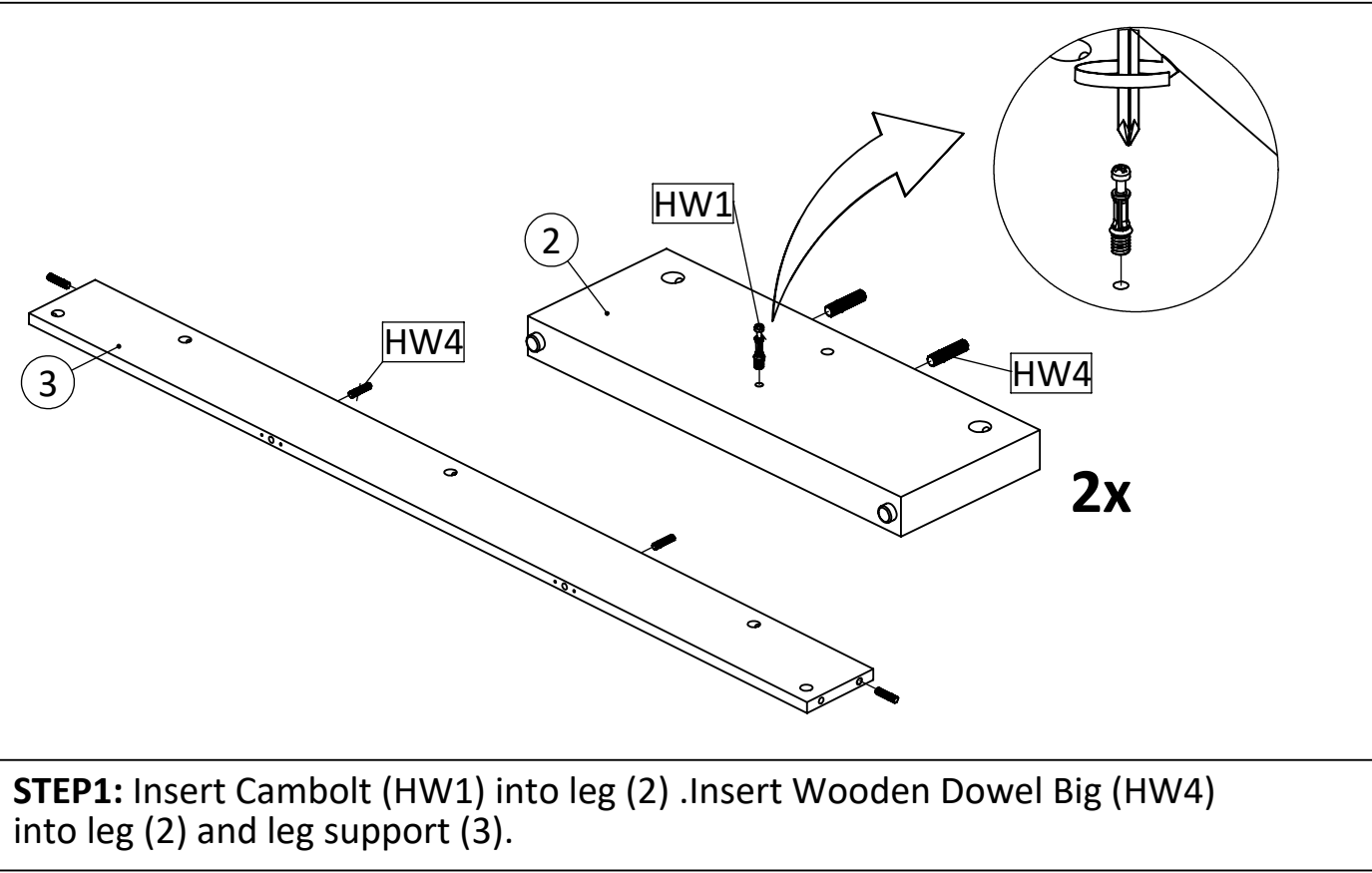
Part List & HW

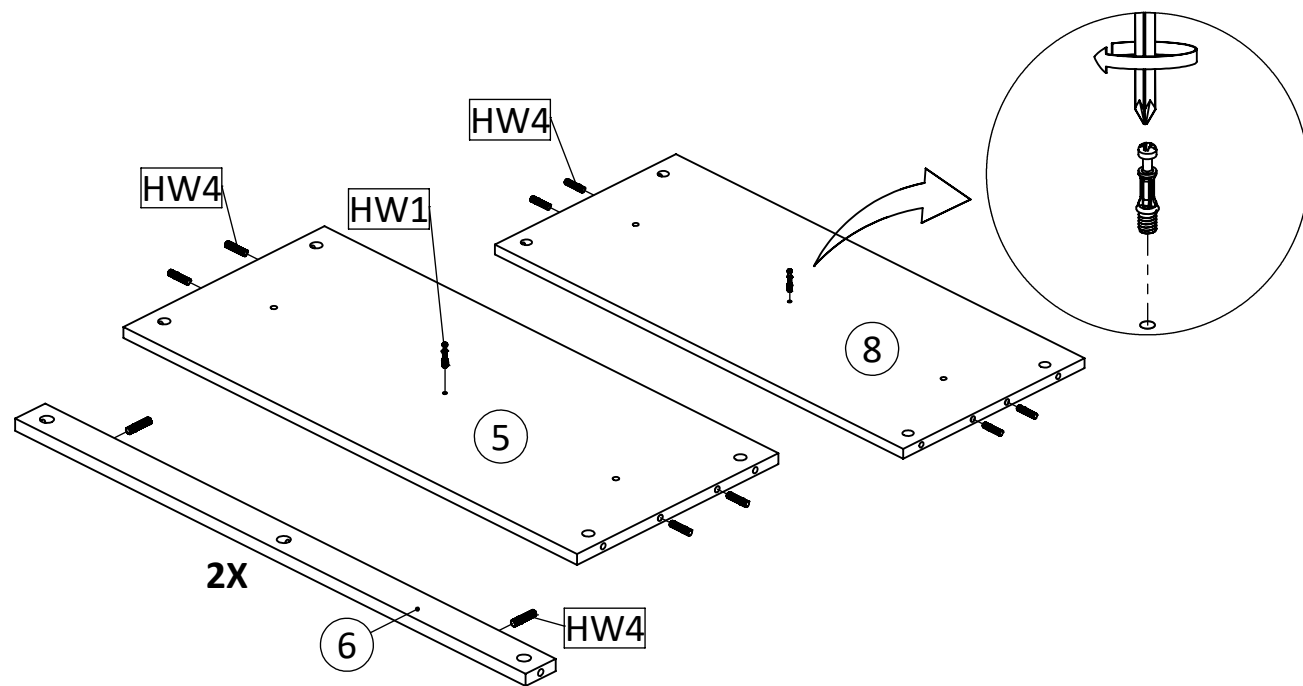
Piece	Description	Qty	Carton Call
1	Bottom panel	1	1 of 1
2	Leg	2	1 of 1
3	Leg support	1	1 of 1
4	Left side panel	1	1 of 1
5	Left Fixed shelf	1	1 of 1
6	Support Middle Panel	2	1 of 1
7	Center Panel	1	1 of 1
8	Right fixed shelf	1	1 of 1
9	Right side panel	1	1 of 1
10	Top Support	1	1 of 1
11	Lower Back Panel	1	1 of 1
12	Upper Back Panel	1	1 of 1
13	Top Panel	1	1 of 1
14	Left door	2	1 of 1
15	Right door	2	1 of 1

Piece	Description	Qty	Carton Call
HW1	Cambolt	33	1 of 1
HW2	Camlock Big	31	1 of 1
HW3	Camlock small	2	1 of 1
HW4	Wooden Dowel Ø8X32MM	32	1 of 1
HW5	Wooden Dowel Ø6X30MM	4	1 of 1
HW6	Screw M6x50MM	6	1 of 1
HW7	Screw M5x8.5MM	16	1 of 1
HW8	Screw M6x12MM	16	1 of 1
HW9	List 'H'	1	1 of 1
HW10	Screw M 6 x 12 MM	12	1 of 1
HW11	Plastic Stopper	16	1 of 1
HW12	Screw M 4 x 19 MM	16	1 of 1
HW13	Straight Hinge	8	1 of 1
HW14	Handle	4	1 of 1
HW15	Adjuster	2	1 of 1
HW16	Plastic "U"	2	1 of 1
HW17	Rubber Stoper	4	1 of 1
HW18	Cover Cap Sticker	33	1 of 1
HW19	Anti - tip	2	1 of 1
HW20	Screw M 6 x 15 mm	4	1 of 1
HW21	Screw M10 x 50 MM	4	1 of 1
HW22	Fisher "S"8	4	1 of 1

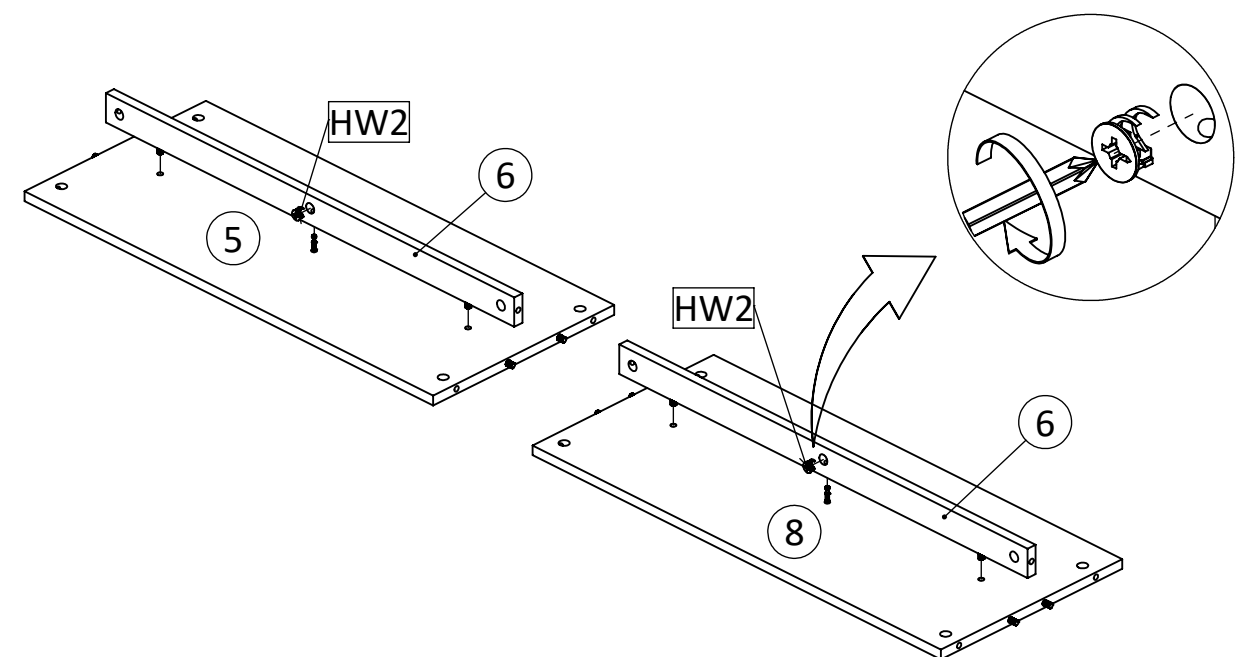
PREPARATION

Before beginning assembly of product, make sure all part are present. Compare part with part contents list and hardware contents list.
If any part is missing or damaged, do not attempt to assemble the product.
Estimated Assembly Time: 60 minutes.

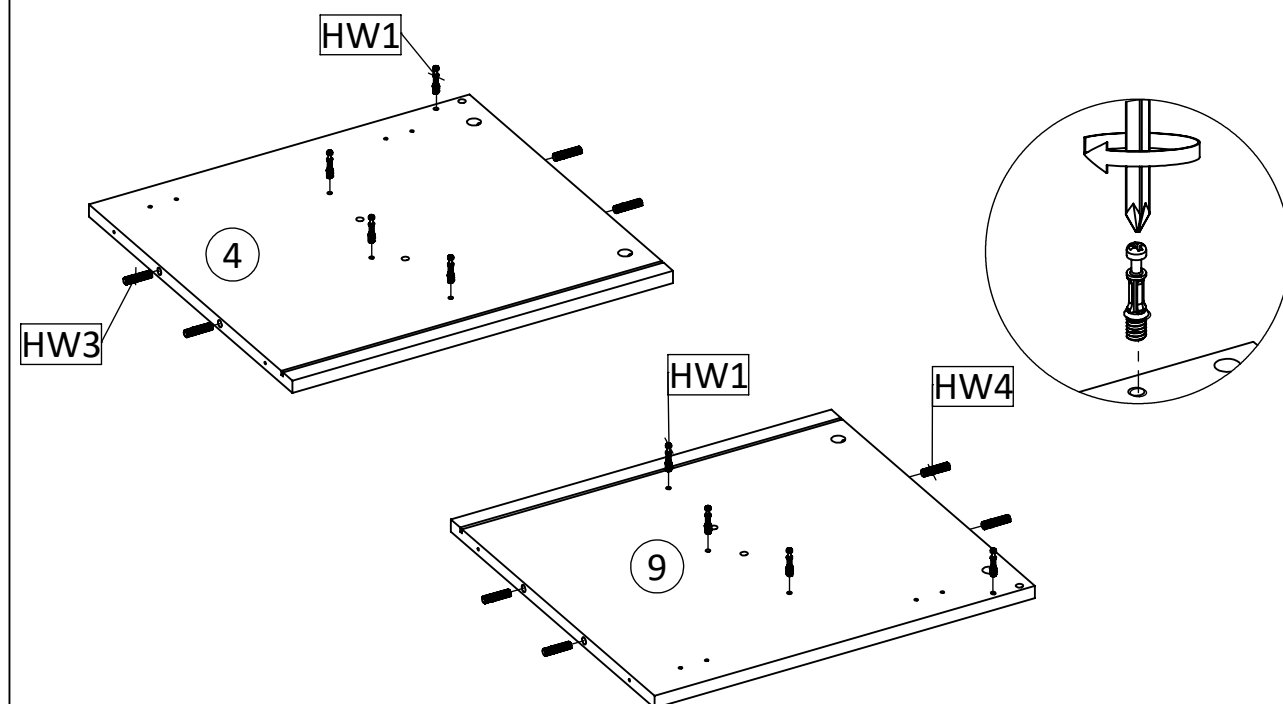




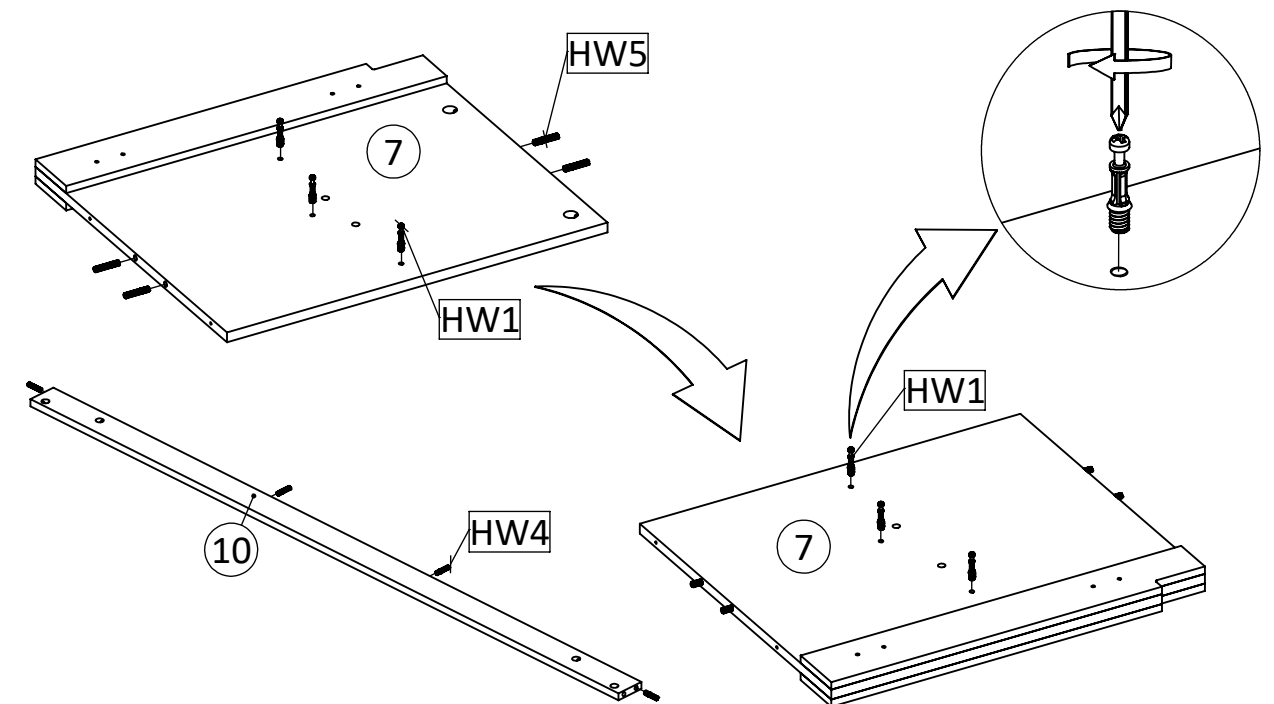
STEP5: Insert Cambolt (HW1) into left fixed shelf (5) and right fixed shelf (8). Insert Wooden Dowel Big (HW4) into left fixed shelf (5), right fixed shelf (8) and into support middle panel (6).



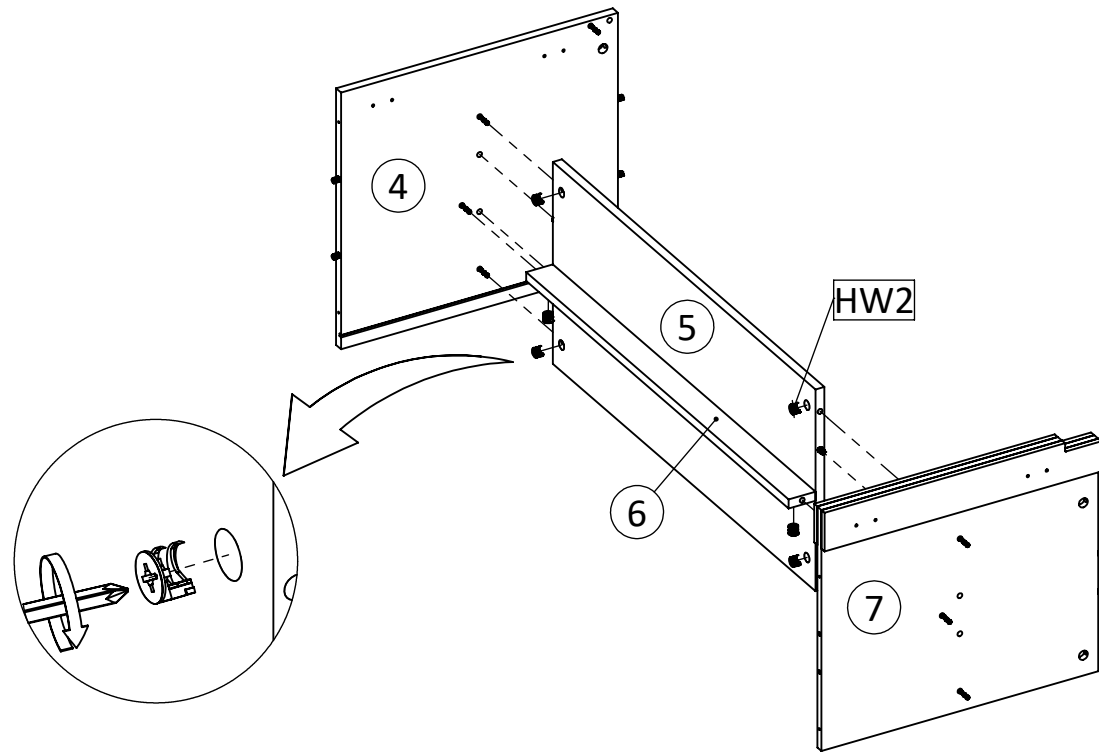
STEP6: Attach support middle panel (6) Into left fixed shelf (5), and into right fixed shelf (8). Secure with Camlock big (HW2) Tighten It Using Screwdriver.



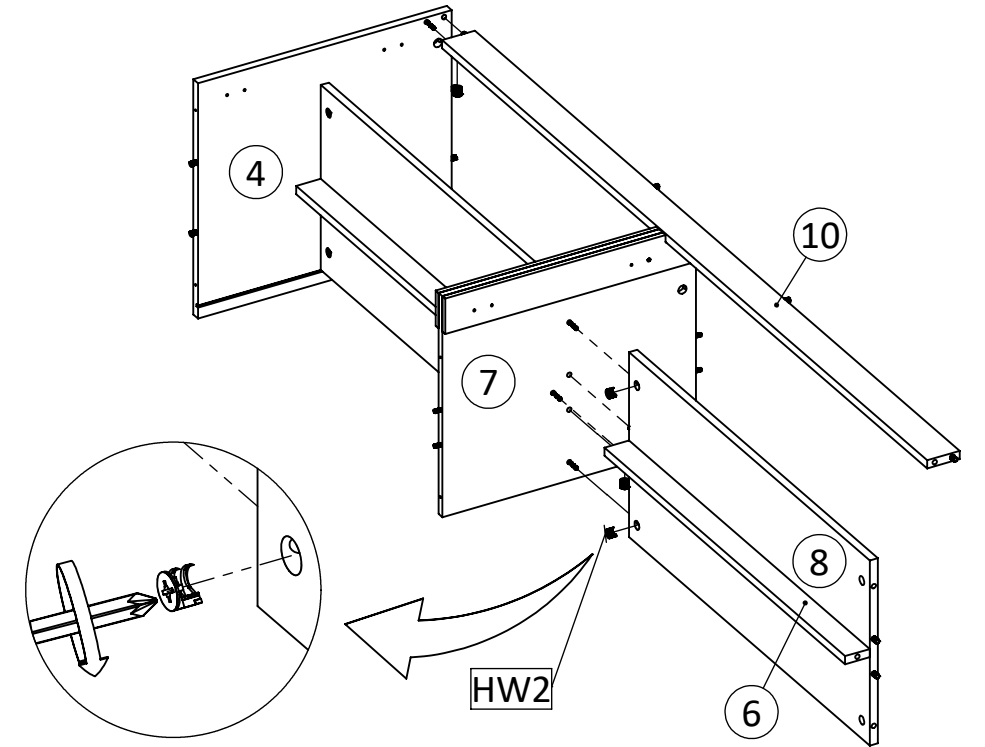
STEP7: Insert Cambolt (HW1) And Wooden Dowel big (HW4) Into left side panel (4) and right side panel (9).



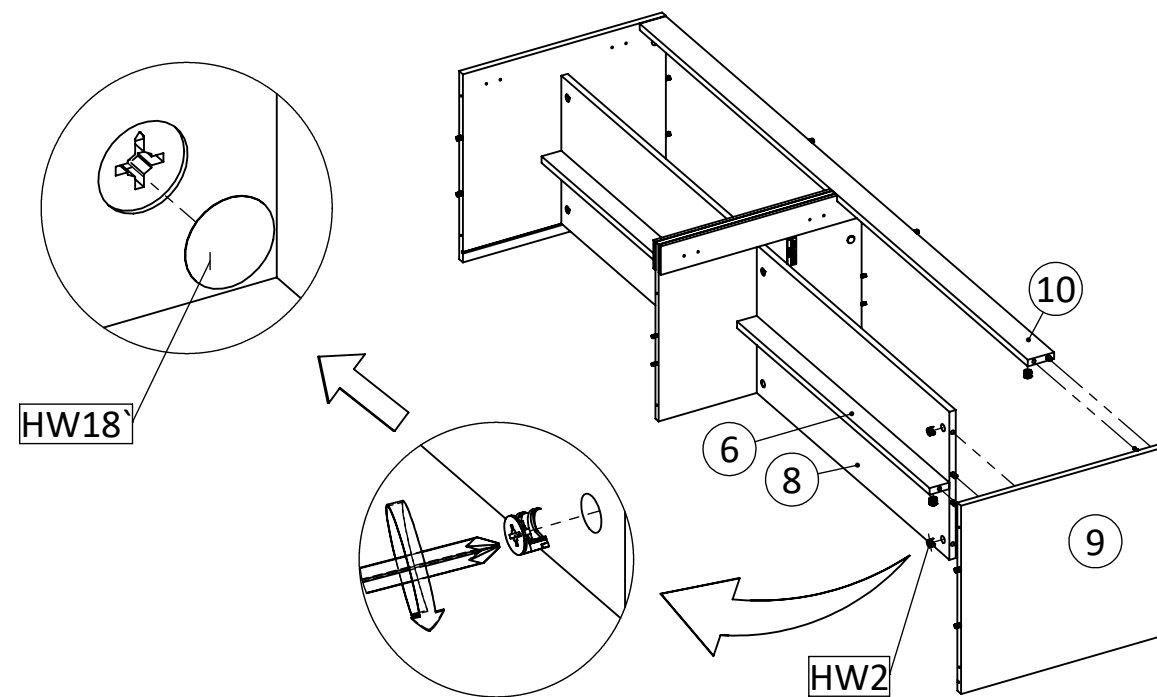
STEP8: Insert Cambolt (HW1) into center panel (7) insert Wooden Dowel small (HW5), into center panel (7) and insert Wooden Dowel big (HW4) into top support (10).



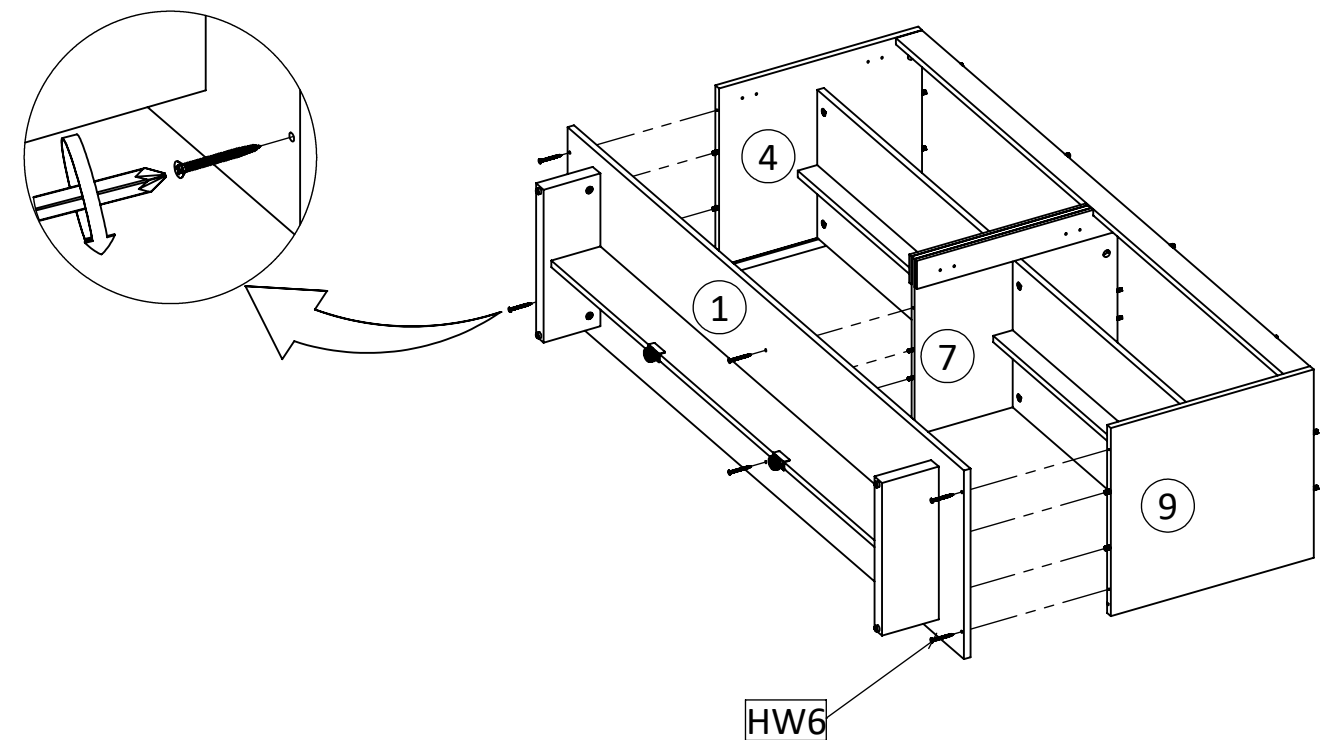
STEP9: Attach left side panel (4) and right side panel (7),into left fixed shelf(5) and into support middle panel (6) .Secure with Camlock big (HW2).



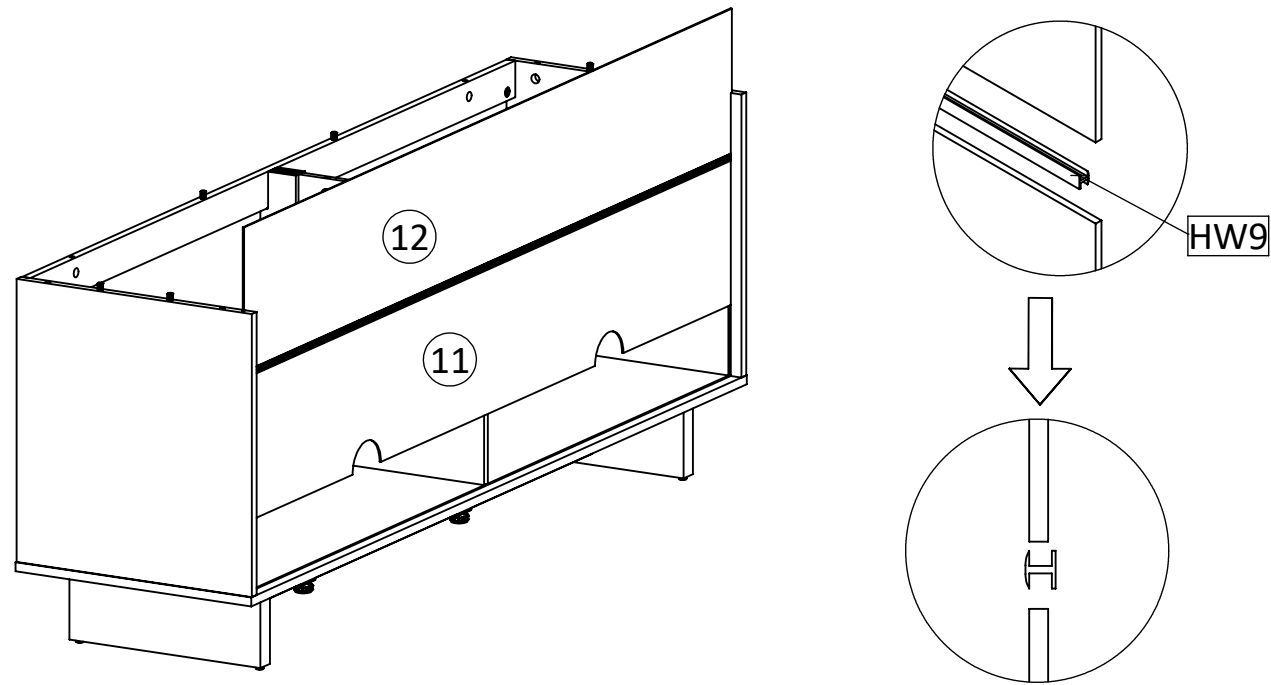
STEP10: Attach fixed shelf (8),support middle panel (6) into center panel (7),and attachright top support (10) into left side panel (4) Secure with Camlock big (HW2).



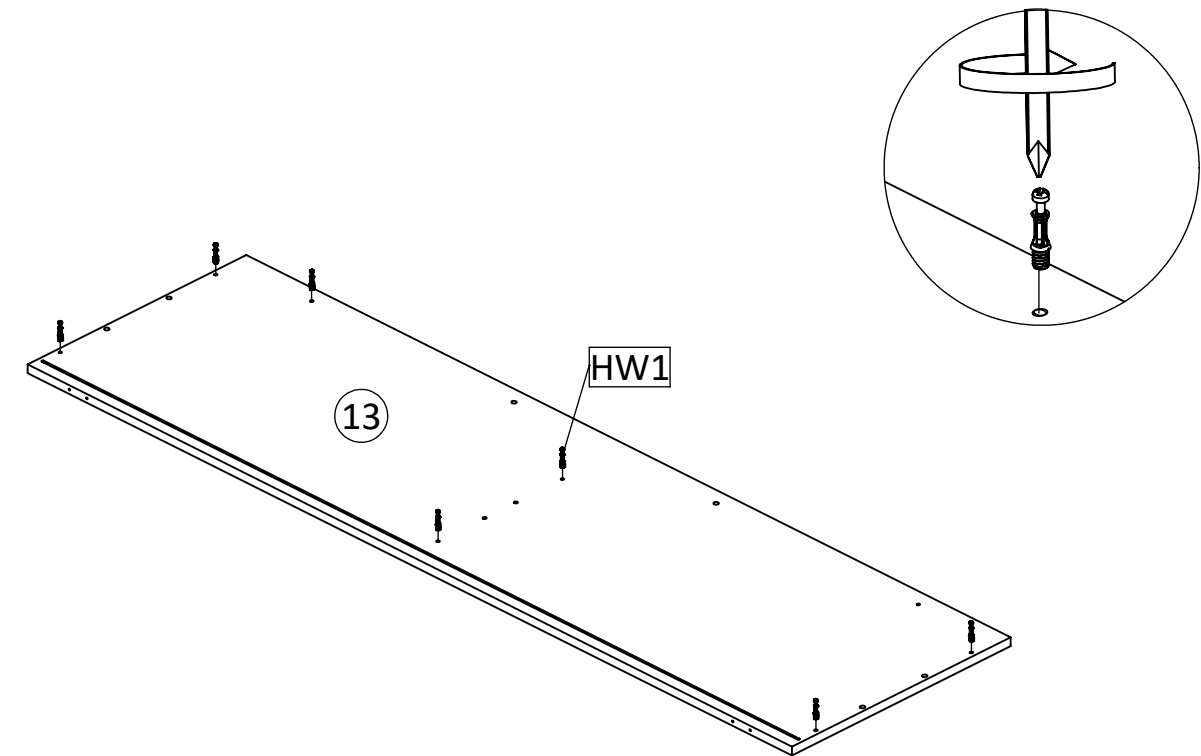
STEP11: Attach right side panel (9), into support middle panel (6),right fixed shelf (8) and top support (10) Secure with Camlock big (HW2).Attach Cover Cap Sticker (HW18) to the panel that has lamination.



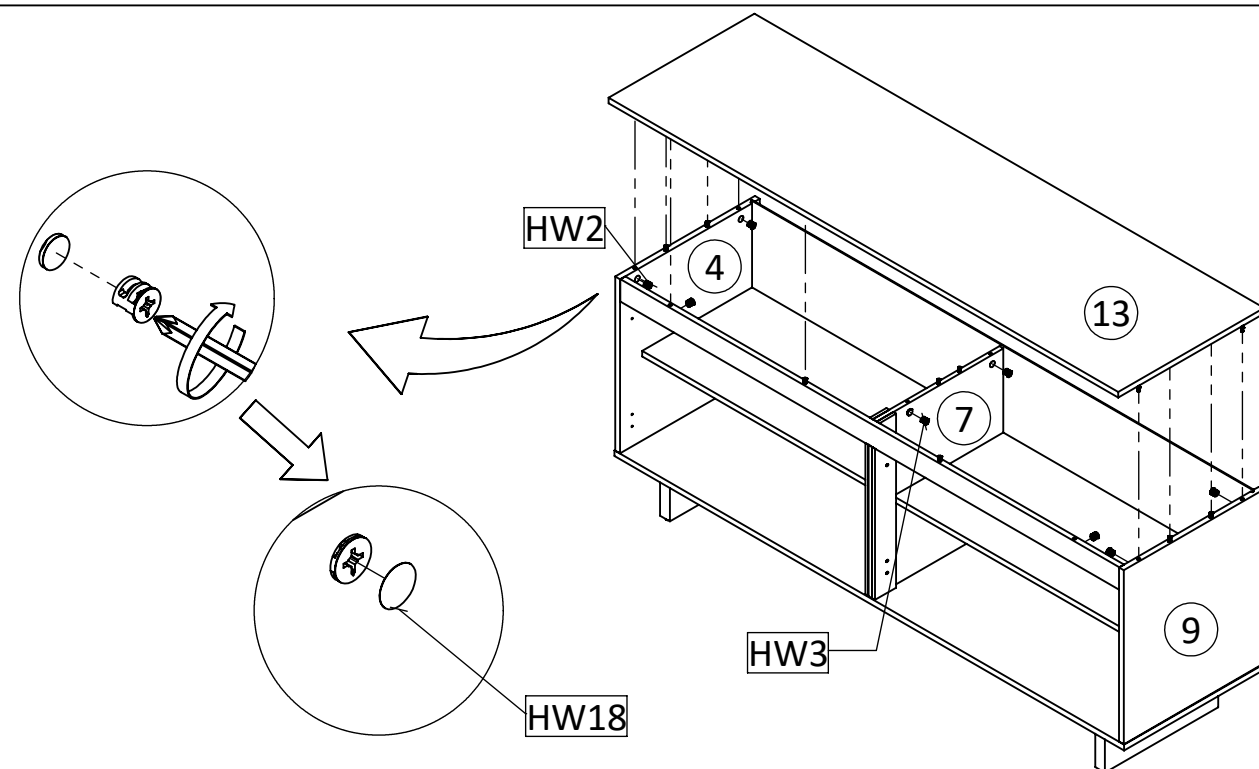
STEP12: Insert left side panel (4),center panel (7) and right side panel (9),into bottom (1).Secure with screw M6 X 50 MM (HW6).



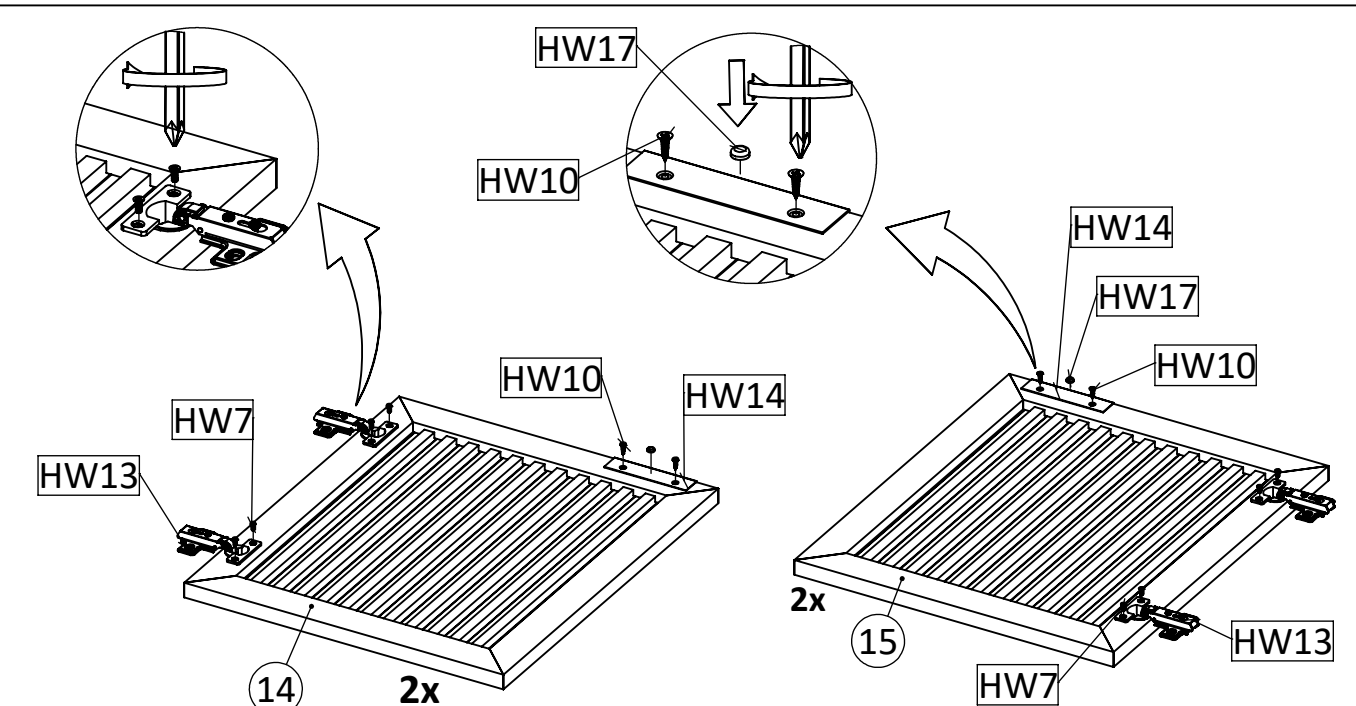
STEP13: Insert upper back panel (12), lower back panel (11) And List "H" (HW9).



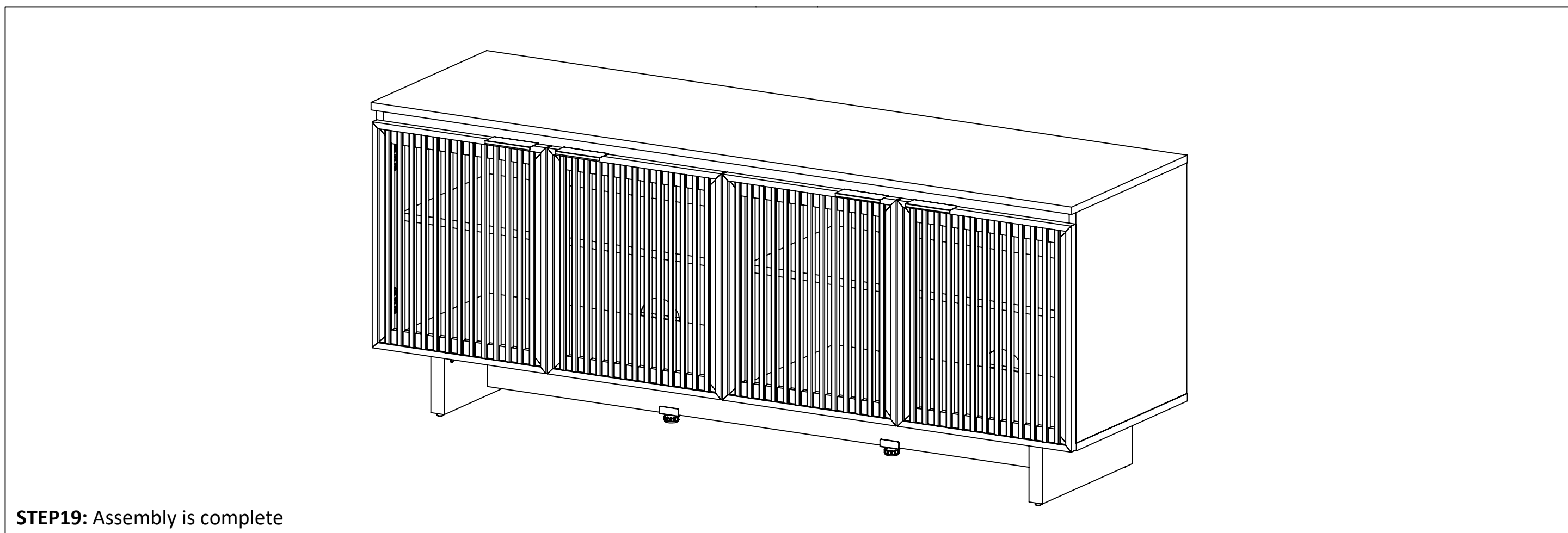
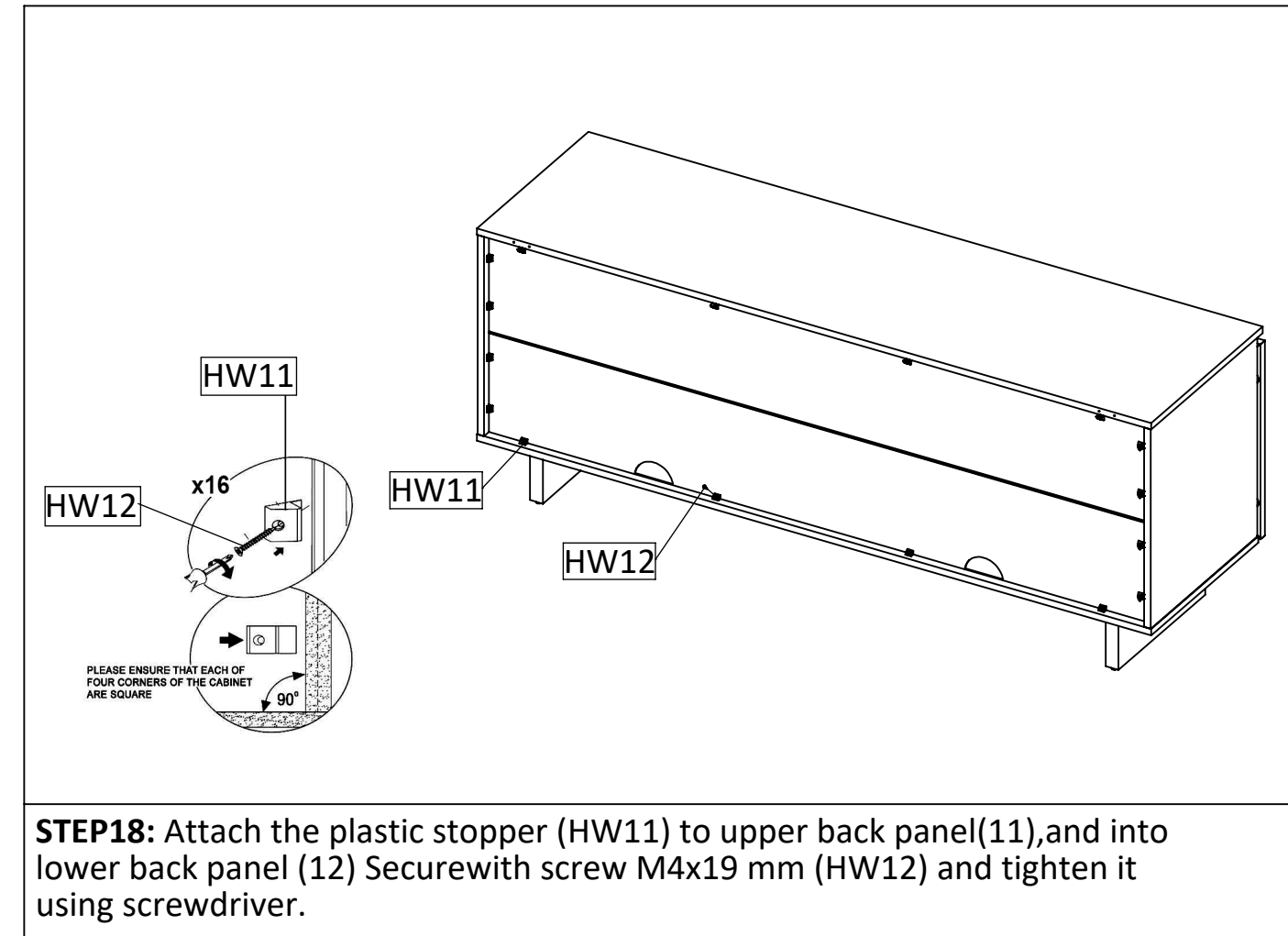
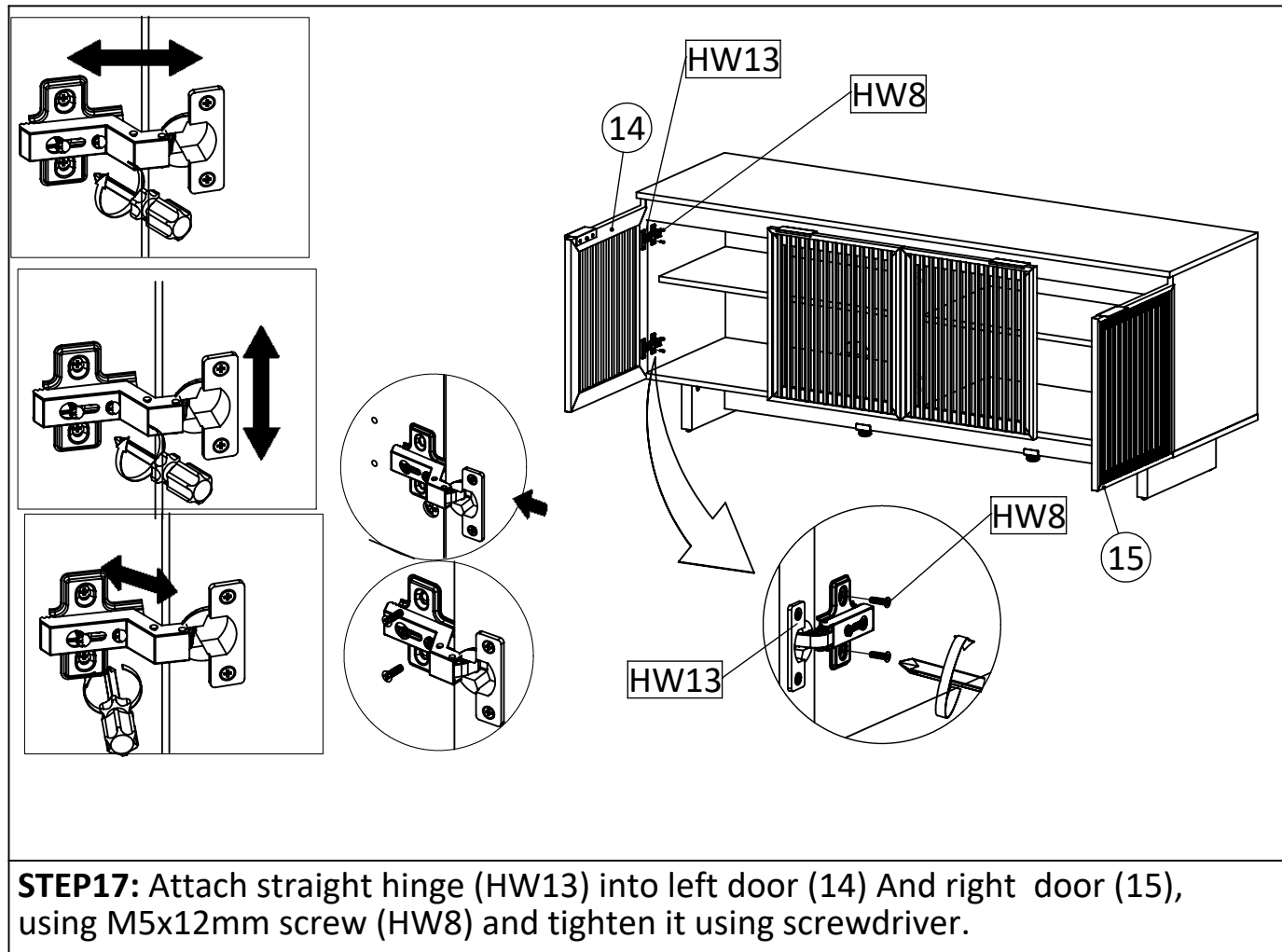
STEP14: Insert Cambolt (HW1) into top panel (13).



STEP15: Insert Top panel (13) Secure with Camlock big (HW2) into left side panel (4) and right side panel (9), and secure with camlock small (HW3) into center panel (7). and tighten it using screwdriver. Continue to attach the cover cap sticker (HW10) to the panel that has lamination.



STEP16: Attach straight hinge (HW13) into left door (14) And right door (15), using M5x8.5mm screw (HW7) and tighten it using screwdriver. attach door handle (HW14) into left door (14) and right door (15), using screw 6 X 12 MM (HW10) and tighten it using screwdriver. Continue to install the rubber stopper (HW17) to the front side of the left door (14) and the right door (15).



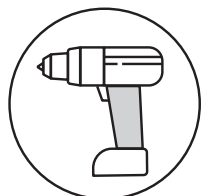


ANTI-TIP RESTRAINT INSTALLATION

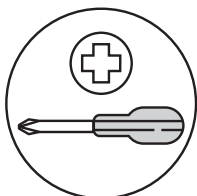
! WARNING!

Children have died from furniture tipover.
To reduce the risk of furniture tipover:

- ALWAYS install tipover restraint provided.
- NEVER allow children to stand, climb or hang on drawers, doors, or shelves.
- NEVER open more than one drawer at a time.
- Place heaviest items in the lower drawers.



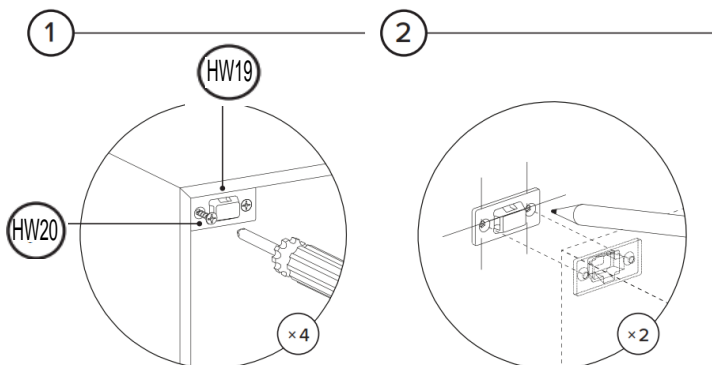
REQUIRED TOOL
8MM / 5/16" DRILL BIT



REQUIRED TOOL

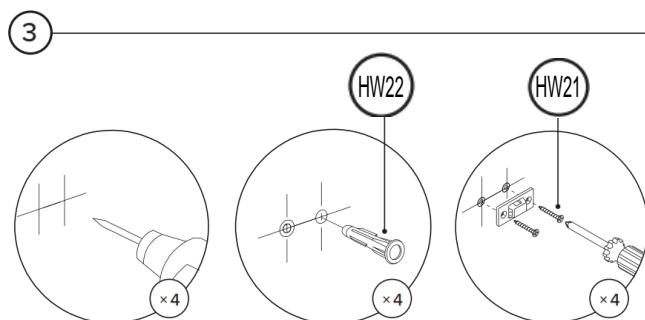


Hardware (HW11/HW10) to attach brackets to wall is designed for drywall. To attach this unit to another type of wall, consult with your local hardware store.

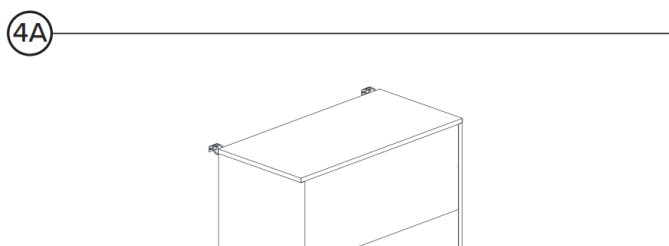


Attach pair of brackets to "Top Panel" of the unit. Note there are no existing pilot holes on the product.

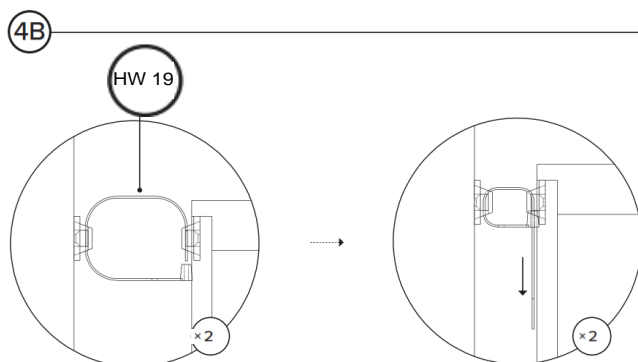
Mark on wall where second pair of brackets should be placed.



Drill holes in wall using 8mm / 5/16" drill bit.

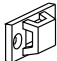

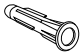
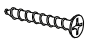



Align brackets on unit with brackets on wall.



Pull strap down until it snap-locks.

ANTI-TIP RESTRAINT PACK

ID	DESCRIPTION	QTY
HW19	BRACKET 	4
HW20	M6 × 15MM SCREW 	4
HW22	M8 × 35MM PLUG 	4
HW21	M10 × 50MM SCREW 	4
HW19	STRAP 	2