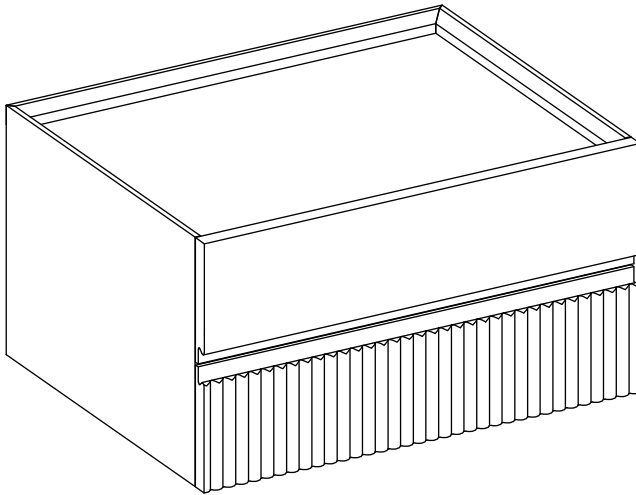


DONTAY 2 DRAWER RIBBED FLOATING NIGHTSTAND

DESIGN# SFV4262

Assembly Instructions



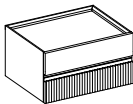
SAFAVIEH
C O U T U R E

Thanks for bringing Safavieh Couture into your home

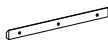
Everything we make is incredibly simple to set up, including your new nightstand. You won't need any additional tools.

Parts List

A x 1
Nightstand



B x 1
Wooden French Cleat

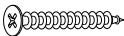


Hardware List

HW1 x 3
Plastic anchors 5x50mm

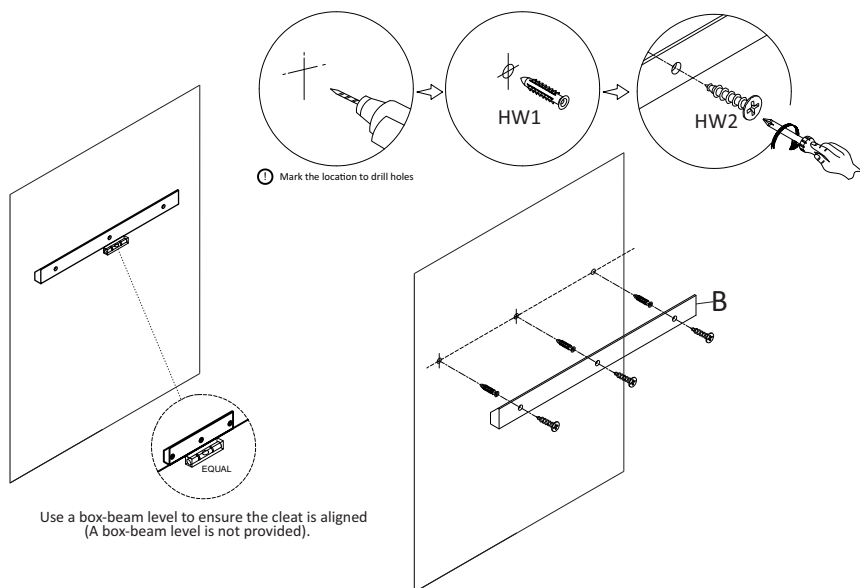


HW2 x 3
Screws 5x60mm



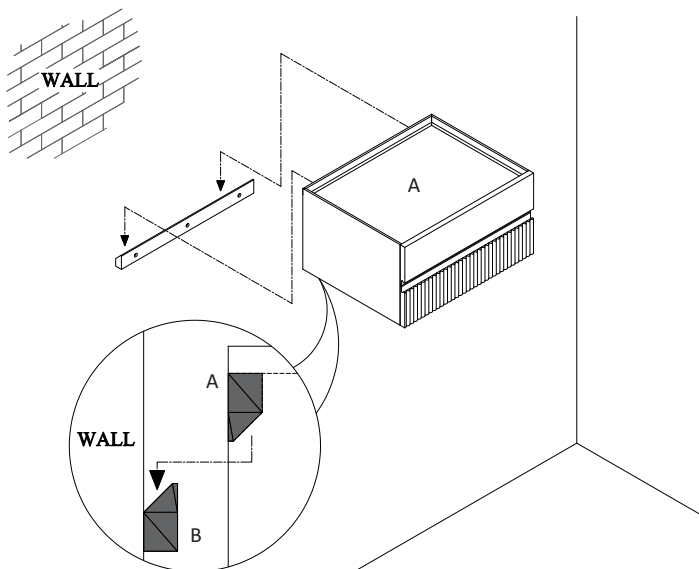
1

Place the Wooden French Cleat (B) against the wall where you want the nightstand hung. Use a level (not included) to make sure the Wooden French Cleat (B) is level. Mark the 3 screw holes on the wall. Use a drill (not included) to make holes in the wall and insert the Plastic Anchors (HW1). Align the screw holes on the Wooden French Cleat (B) to the Plastic Anchors (HW1). Use a screwdriver (not included) to screw in the Screws (HW2).



2

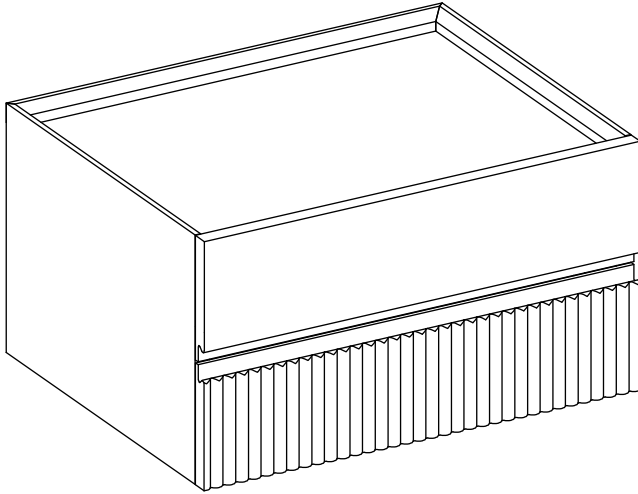
Hang the bar on the back of the Nightstand (A) on the Wooden French Cleat (B) as shown below.



3

Place the nightstand in the place where you will use it. We'd love to see it – just tag us (we're @safavieh) and use the hashtag #safavieh on Instagram!

@safavieh



Need help?

Feel free to contact us via email or call
if you have any specific questions!

contact us:

cs@safavieh.com

866-422-9070