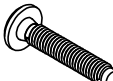





ASSEMBLY INSTRUCTIONS

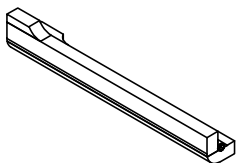
3600009

HARDWARE

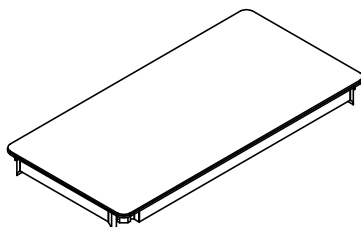
| A x 8 | B x 8 | C x 8 | D x 1 | |
|--|---|---|---|--|
|  |  |  |  | |
| M8 X 100 mm | Ø13 X 1.5 mm | Ø18 X 1 mm | | |


PARTS

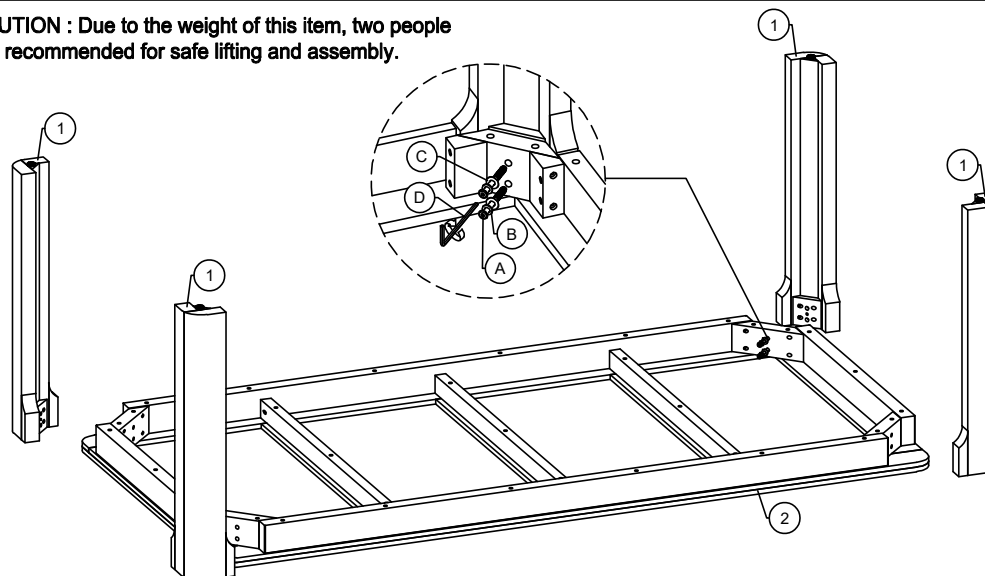
1 x 4



2 x 1



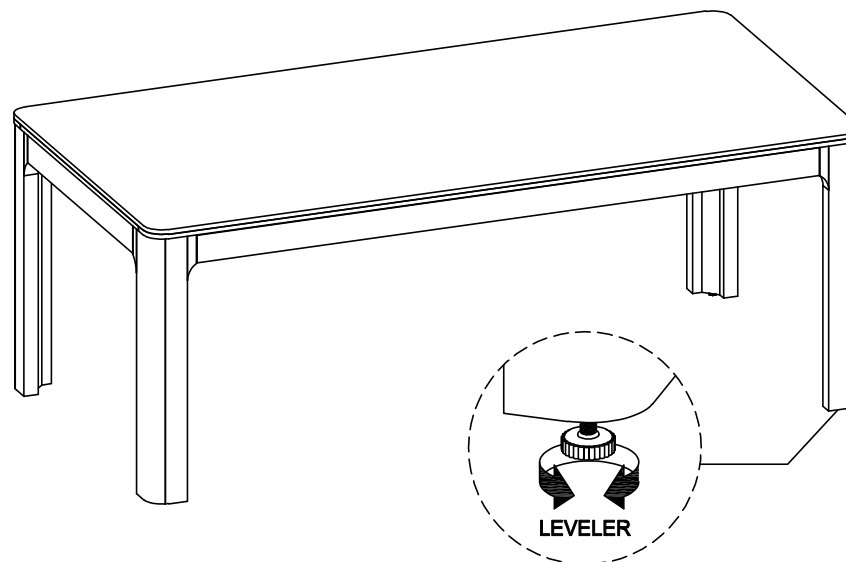
- (1)  **CAUTION** : Due to the weight of this item, two people are recommended for safe lifting and assembly.



Assemble on a clean non-marring surface (such as the product's packing foam)

- Place the Top Panel (2) on the floor. Attach one leg (1) to corner of the Top Panel (2) using Bolt (A), Lock Washer (B), and Flat Washer (C). Secure each leg with the Allen Key (D).
- Repeat this step for the remaining three Legs (1).

(2)



- Stand the Dining Table upright, then adjust the levelers located at the bottom of each Leg (1). Turn them outward, counterclockwise, to help compensate for uneven surfaces.