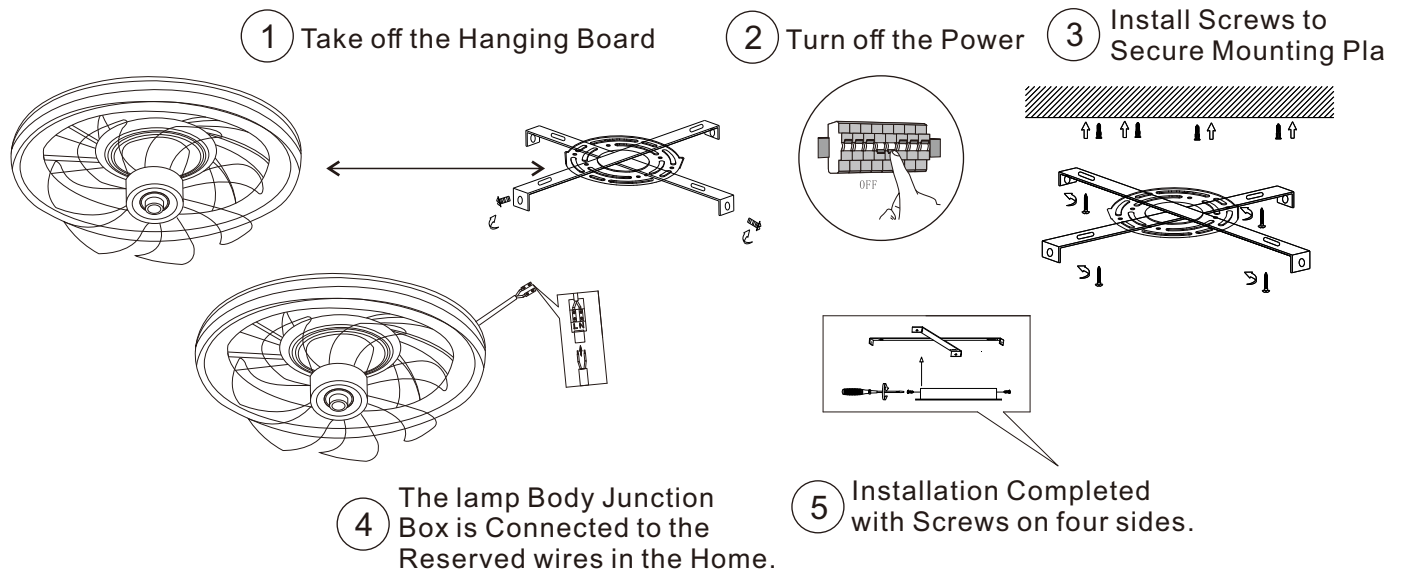


Fan light installation Diagram



EN These instructions are provided for your safety. It is very important to read the instructions carefully before installation

Installation and safety instructions

1. Read this information carefully and keep it for future reference. If you have any doubts, get in touch the shop.
2. Lighting fixtures are mounted and installed only by qualified personnel.
3. Install in accordance with current EC regulations. The connection to the power source must only be carried out by qualified personnel.
4. Defects resulting from improper installation will not be accepted as warranty claims, not we are not responsible in any way for the consequences of this type of defects,
5. Based on health and safety rules, you must not convert (CE) or modify the light fixtures in any way. Failure to follow this instruction will void the warranty.
6. Do not install the lamps on flammable surfaces, wet or on surfaces with good electrical conductivity.
7. Carefully identify the power cable and check that there are no other cables in the area, to avoid possible injuries that may occur during installation,
8. Support the lamp so that it does not strain the cables when making the electrical connections; if necessary, ask for the help of another person.
9. Each material requires specific mounting accessories. Use screws and dowels suitable for the material on which the lamp is fixed. Included may be inappropriate.

Careful! Before starting the installation, you must cut off the power supply by disconnecting it from the safety panel.

Electrical connection

1. Use a small screwdriver to connect the cables of the lamp to those of the electrical installation; for login use a ruler.
2. Check that all connections are secure and that no wires are left out of the terminal block. Use a certified login block.
3. Check that the insulation of the electrical conductors from the mains is not damaged
4. Install the bulbs respecting the wattage indicated on the lamp label; do not exceed the maximum value stated.

Other important information

- Lamp parts may heat up during use. Do not touch the bulbs and the parts of the lamp around them (eg glass shades, metal parts, etc.) while they are lit. Turn off the light before changing the bulbs, wait until the parts have cooled down enough to avoid possible injuries (risk of burns).
- Always make sure you use the recommended bulb. Observe the recommended maximum power.
- Children must not be allowed to play with the light fixtures.
- Never leave the lamp without bulbs (this prevents someone from accidentally touching the contacts)
- Pay attention to how to store burned-out light bulbs.
- The bulbs become hot and therefore a sufficiently large distance must be kept from easily inflammable materials (e.g. curtains).
- The lamps can only be cleaned after they have been closed and cooled down. Do not allow moisture to come into contact with the lamp, connectors or electrical conductors. We recommend using only a dry, soft cloth. Do not use polish or solvents.
- The guarantee will be granted through the point of sale and will only be valid accompanied by the receipt acquisition. Warranty does not apply to used components, lampshades/glass parts, bulbs, batteries. Defects or technical problems resulting from: misuse, improper installation, failure to follow the instructions for use, transformations/modifications brought to the lighting fixture will not be accepted as warranty claims.