



# *ASSEMBLY INSTRUCTIONS*

## *COASTER FINE FURNITURE*



*Fine Furniture for every stage of life*

**722087**  
**End Table**

ITEM: 722087



ASSEMBLY INSTRUCTIONS

ASSEMBLY TIPS:

- 1. Remove hardware from box and sort by size.
- 2. Please check to see that all hardware and parts are present prior to start of assembly.
- 3. Please follow attached instructions in the same sequence as numbered to assure fast & easy assembly.



WARNING!

- 1. Don't attempt to repair or modify parts that are broken or defective. Please contact the store immediately.
- 2. This product is for home use only and not intended for commercial establishments.

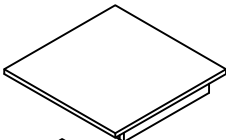


ASSEMBLY TIME

15 MINUTES

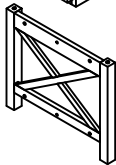
PARTS IDENTIFICATION

A TOP



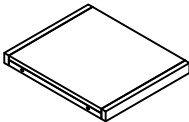
1PC

B LEG FRAME



2PCS

C SHELF

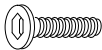


1PC

HARDWARE IDENTIFICATION

1

BOLT  
(1/4" x 35mm - RBW)



8PCS

2

LOCK WASHER  
(1/4" x 14mm - RBW)



8PCS

3

FLAT WASHER  
(1/4" x 19mm - RBW)



8PCS

4

ALLEN WRENCH  
(4mm - RBW)



1PC

5

WOOD DOWEL  
(Ø10 x 30mm)

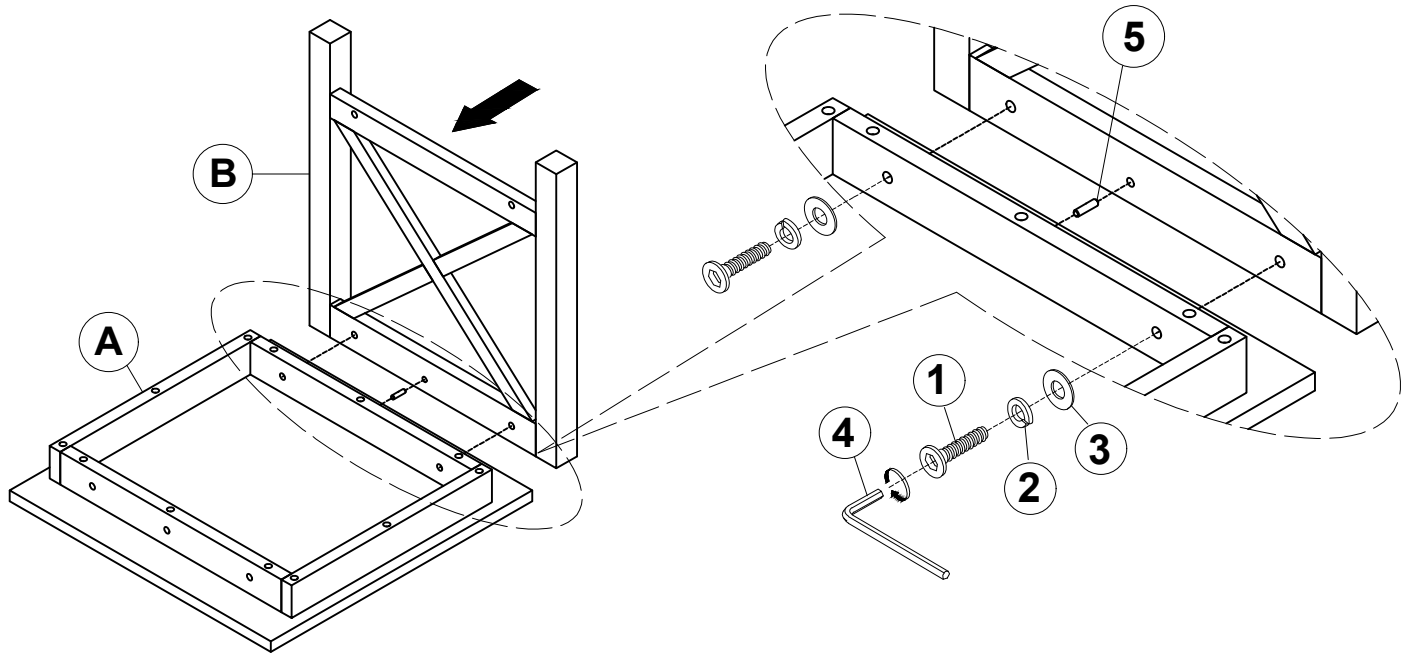


4PCS

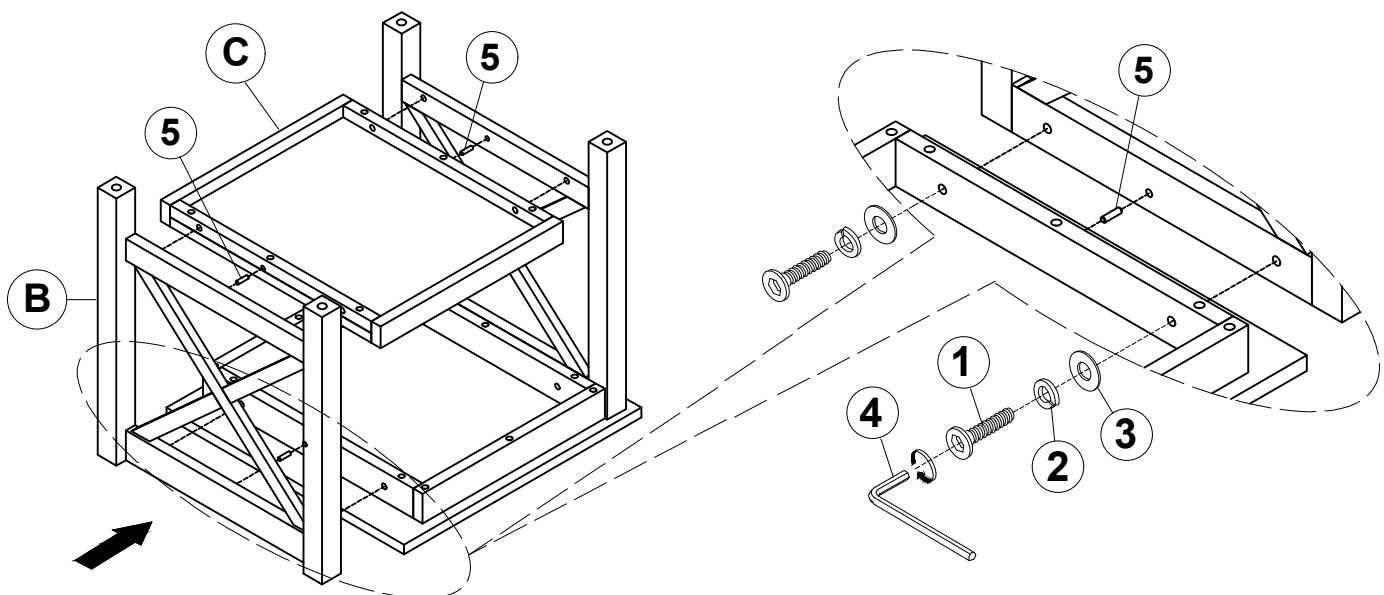
ITEM: **722087**

## ASSEMBLY INSTRUCTIONS

### STEP 1



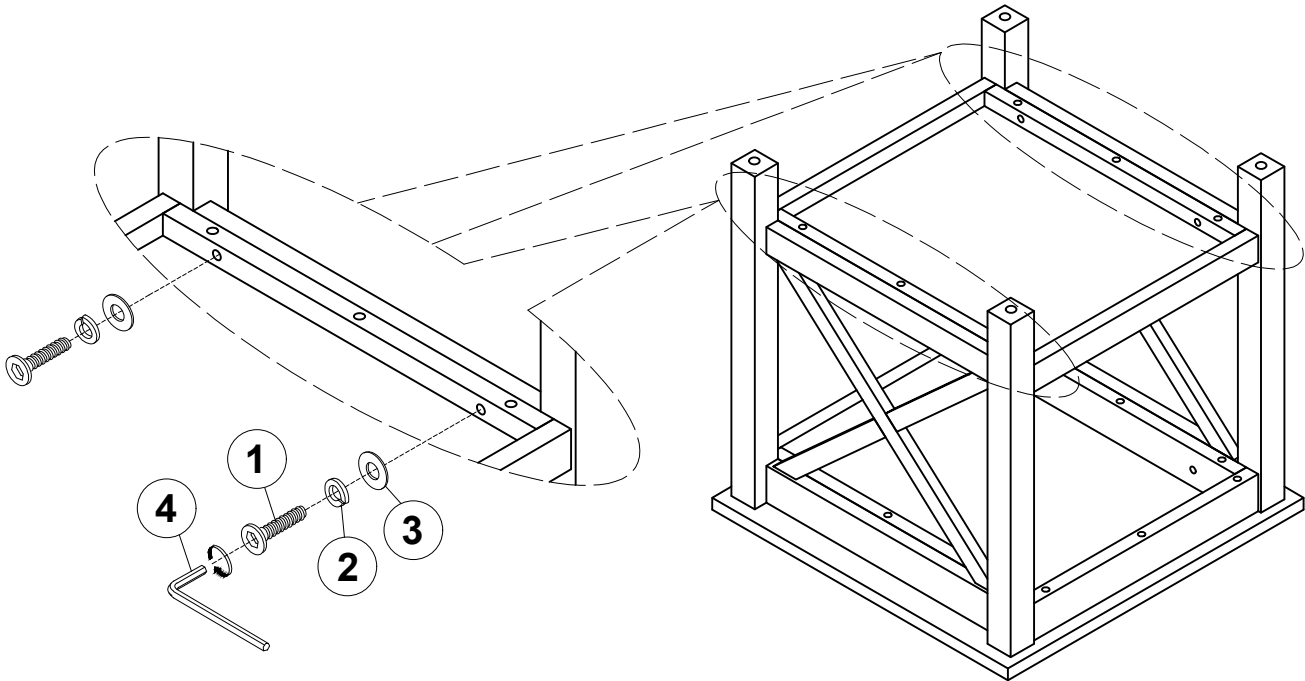
### STEP 2



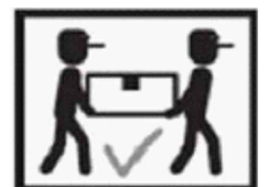
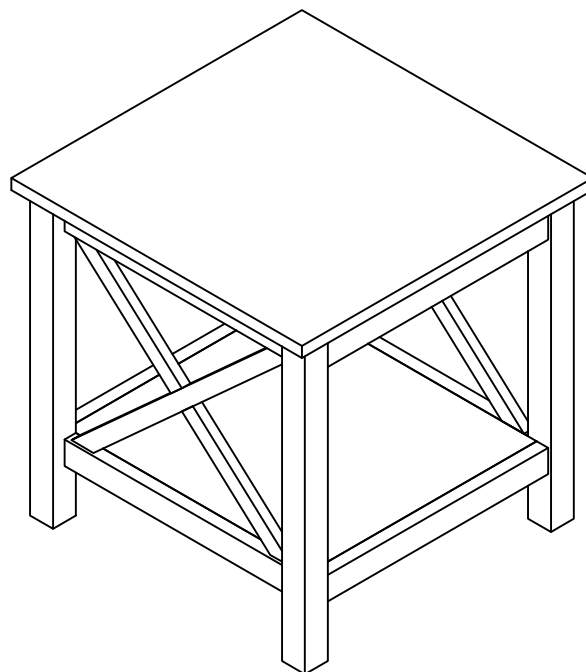
ITEM: **722087**

## ASSEMBLY INSTRUCTIONS

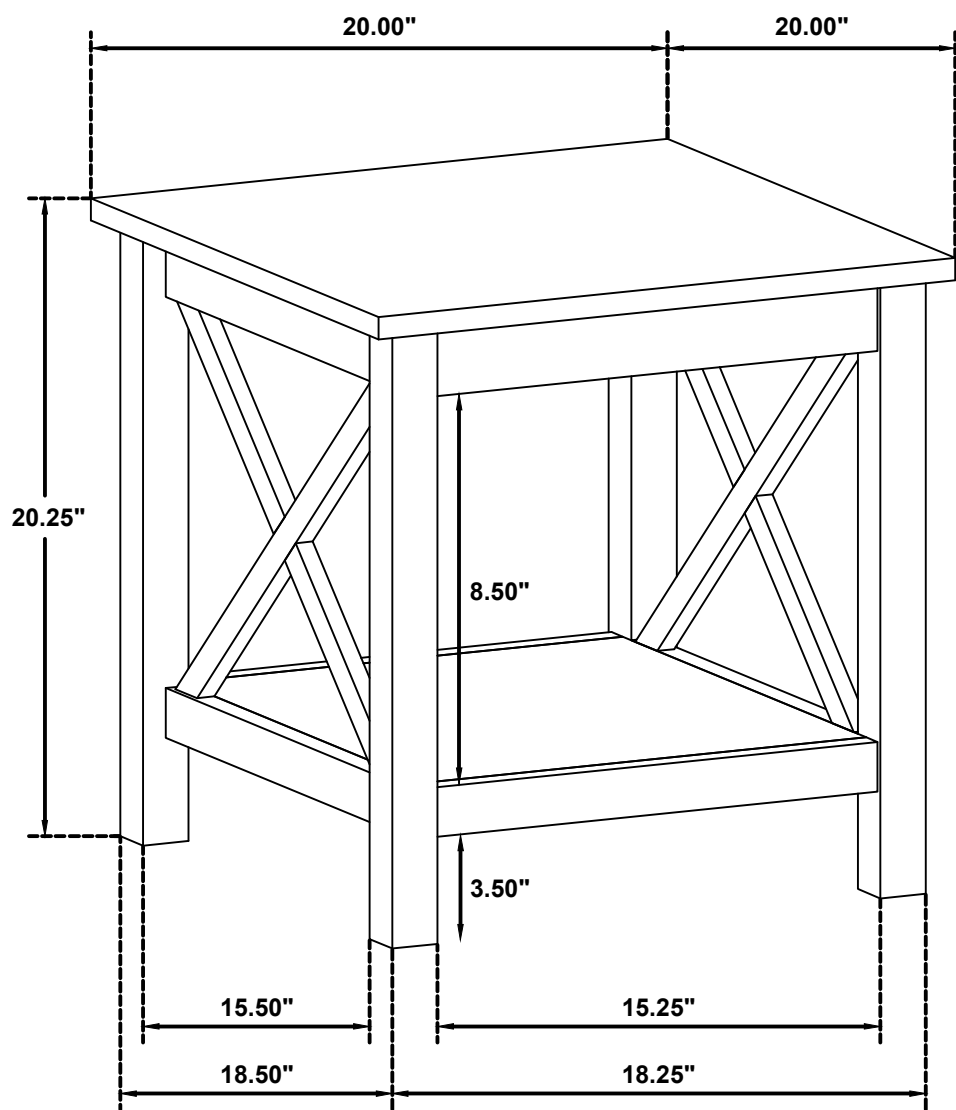
### STEP 3



### **STEP 4** **COMPLETE**



ITEM: **722087**



**Note: Dimension tolerance  $\pm 5\%$**