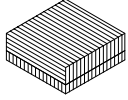




ASSEMBLY INSTRUCTION

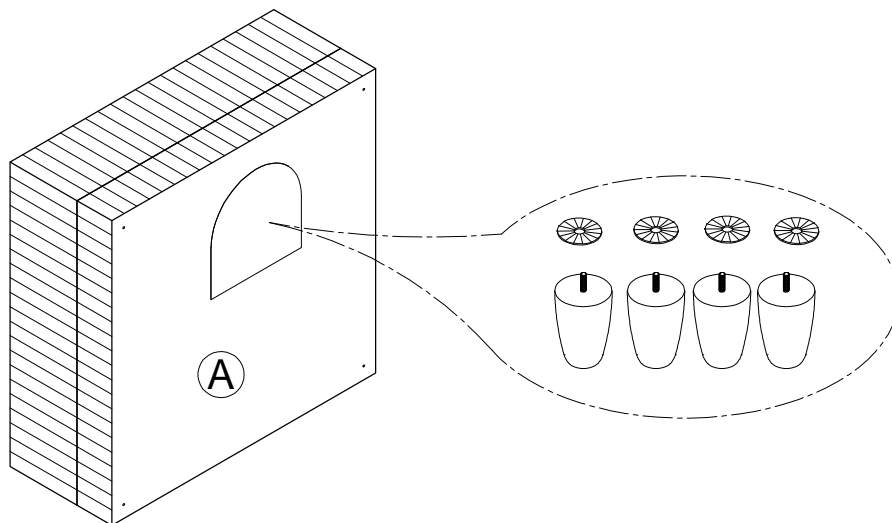
ITEM NO: 194S9688GY-4

OTTOMAN

LEGS, HARDWARE ARE STORED IN THE BOTTOM OF THE SEAT, PLEASE TAKE OUT FOR ASSEMBLY.

NO.	PARTS LIST	QTY	DESCRIPTION
A		1	Ottoman
B	 Ø3-1/8"*5-1/8"	4	Wooden Leg
C		4	Washer

STEP 1:

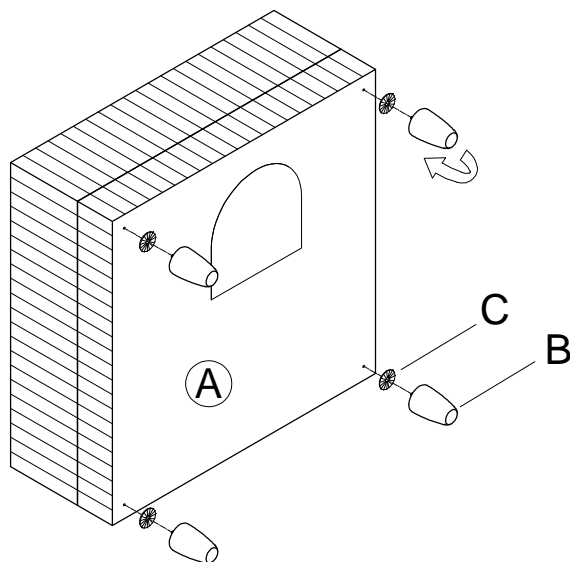


ASSEMBLY INSTRUCTION

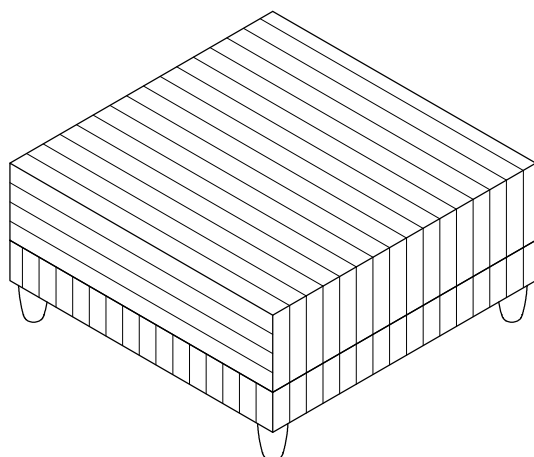
ITEM NO: 194S9688GY-4

OTTOMAN

STEP 2:



STEP 3 (Completed) :





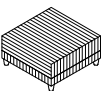
CARE INSTRUCTION FOR FABRIC FURNITURE

In order to maintain the original appearance of your fabric furniture, please follow below simple care procedures.

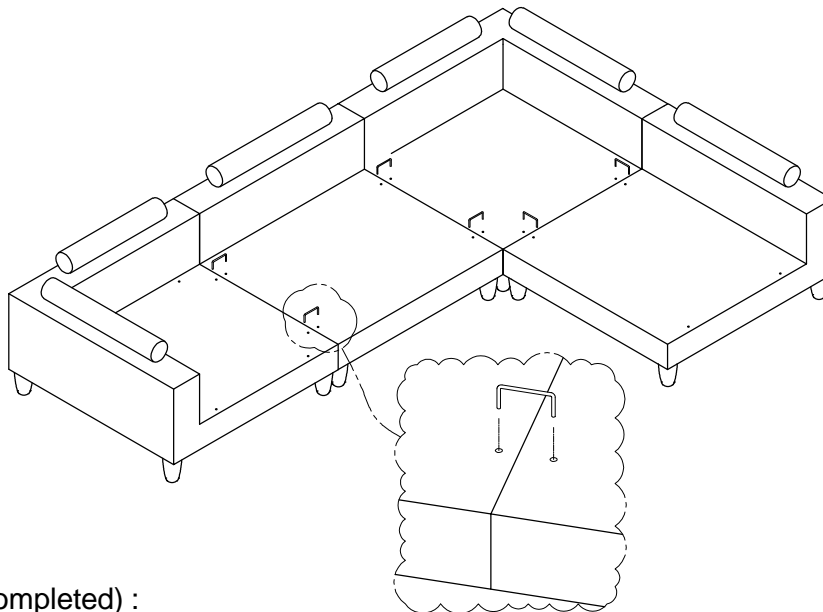
°Avoid exposing furniture directly to sunlight or heating and air conditioning outlets. Exposure to sunlight or heating and air conditioning outlets will fade/damage fabric.

°Wipe gently with a damp soft cloth to remove dust, dirt and any grime build up.

ASSEMBLY INSTRUCTION

NO.	PARTS LIST	QTY	DESCRIPTION
A		2	AC
B		2	CR
C		1	4 - Ottoman

STEP 1 :



STEP 2 (Completed) :

