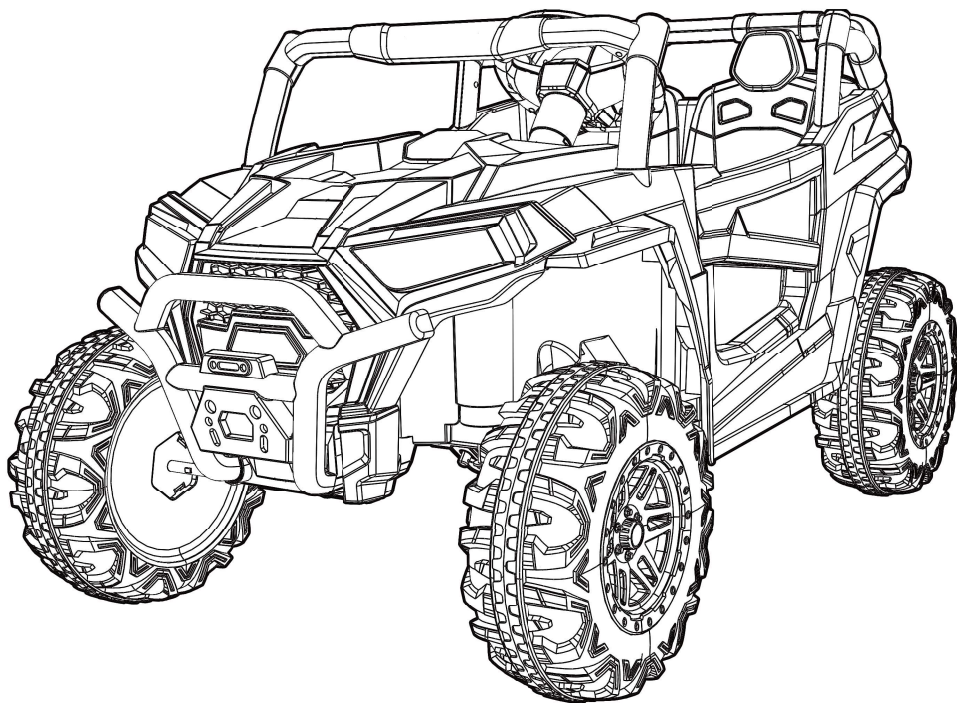


# OWNERS MANUAL

with Assembly Instructions

CHILDREN'S ELECTRONIC TOY UTV



## **WARNING:**

**Must be assembled by an adult.**

- Suitable for 3+ Years
- Maximum user weight: 50 kg

**Read and understand this entire manual before using!**

Please keep this manual for future reference as it contains important information. Before first time use, charge the battery for at least 4-6 hours, but no more than 10 hours.

**ABOUT THIS MANUAL:** This Manual was written to help you and your child get the most performance, comfort, enjoyment and safety when riding your new electric ride-on toy. It is important for you to understand your new electric ride-on toy. By reading this manual before you let your child go out on his/her first ride, you will know how to get the most from your new electric ride-on toy. It is also important that you or your child's first ride be in a controlled environment, away from cars, obstacles, and other riders.

## SPECIFICATIONS:

---

<b>Battery:</b>	12V7 AH *1, or 12V10 AH *1, 24V5 AH *1 or 24V7 AH *1, or 24V10 AH *1
<b>Charger:</b>	input: depend on local voltage output: DC12V500mA-1000mA or 24V500mA-1500mA
<b>Suitable age:</b>	3+ years
<b>Load Capacity:</b>	Under 50kg
<b>Speed:</b>	3.2-8.2 km/h
<b>Size of car:</b>	118 * 71 * 68 CM
<b>Power way:</b>	Charging type
<b>Charge time:</b>	6-8 hours
<b>Driving motor:</b>	550-14500 *2, or 550-14500*4
<b>Steering motor:</b>	390-5000 *1

 **WARNING!**

- **CHOKING HAZARD** - Small parts. Not suitable for children under 36 months. The product contains small parts, keep children away when assembling.
- **ADULT ASSEMBLY REQUIRED.**
- Always remove protective material and poly bags and dispose before assembly.
- Protective equipment should be worn. Always wear shoes and sit in the seat when operating the vehicle.
- Only drive on level ground. Never use on the lawn.
- Keep your hands, hair, and clothes away from moving parts.
- Never leave child unattended. Direct adult supervision is required. Always keep child in view when child is in vehicle.
- To reduce the risk of injury, adult supervision is required. Never use in roadways, near motor vehicles, on or near steep inclines or steps, swimming pools or other bodies of water, always wear shoes, and never allow more than 2 riders.
- Never use in unsafe conditions such as snow, rain, loose dirt, mud, sand, or gravel, otherwise may result in an unexpected accident such as tipping over, and could damage the electrical system or battery.
- Not to be used in traffic.
- This toy should be used with caution since skill is required to avoid falls or collisions causing injury to the user or third parties.
- This toy is unsuitable for children under 36 months due to its maximum speed; Maximum user weight is 50kg.
- This toy has no brake.

 **BATTERY INFORMATION**

- Non-rechargeable batteries are not to be recharged.
- Rechargeable batteries are to be removed from the toy before being charged.
- Rechargeable batteries are only to be charged under adult supervision.
- Different types of batteries or new and used batteries are not to be mixed.
- Batteries are to be inserted with the correct polarity.
- Exhausted batteries are to be removed from the toy.
- The supply terminals are not to be short-circuited.

 **WARNING!**

- The battery on the vehicle is not replaceable.
- All circuit connections in the toy must be connected properly. Any wrong circuit connections could cause possible dangerous malfunctions, shortcircuit, sudden equipment failure and other possible failures

PART NO.	PART NAME	Q'ty (pcs)		REMARKS
		4WD	2WD	
1	Vehicle body	1	1	
2	Gear box	4	2	Tie on the body
3	Driving wheel	4	2	
4	Normal wheel	/	2	
5	Ø12 washer	4	6	
6	Lock nut	4	4	
7	Wheel cover	4	4	
8	Bull bar	1	1	
9	Rear axle	1	1	
10	Steering wheel	1	1	
11	Seat cushion	1	1	
12	Seat back	1	1	
13	Front roll bar	1	1	
14	Rear roll bar	1	1	
15	Rear trunk plate	1	1	
16	Spade	1	1	
17	Spade holder	2	2	
18	Socket wrench	2	2	
19	Charger	1	1	
20	Remote controller	1	1	If equipped, for RC type only.

### Assembly tools required (not included):

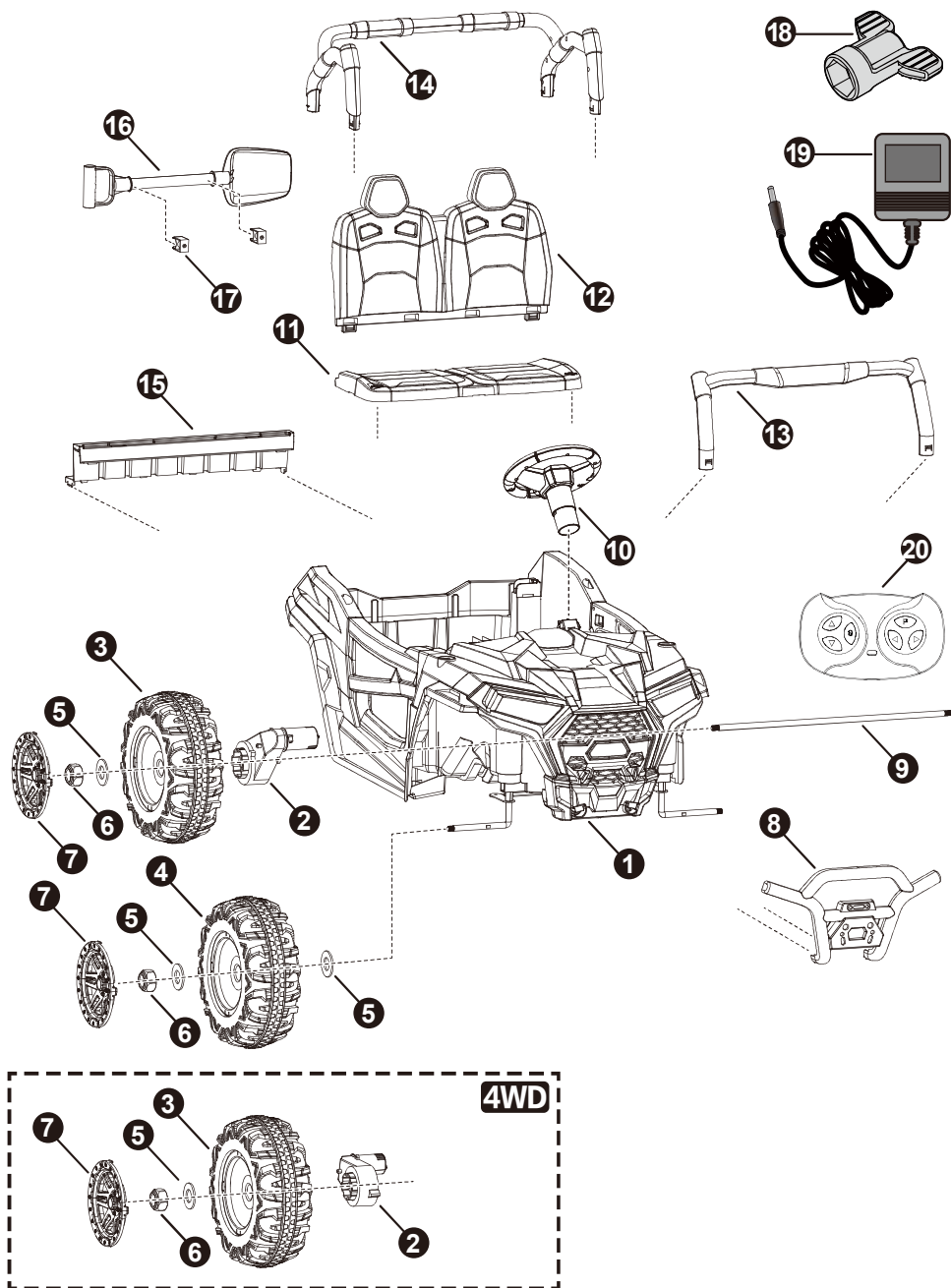
**Screwdriver**

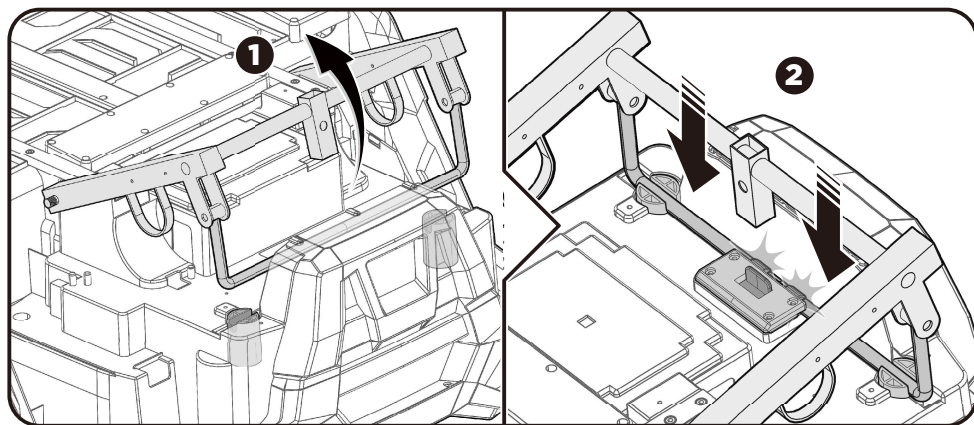
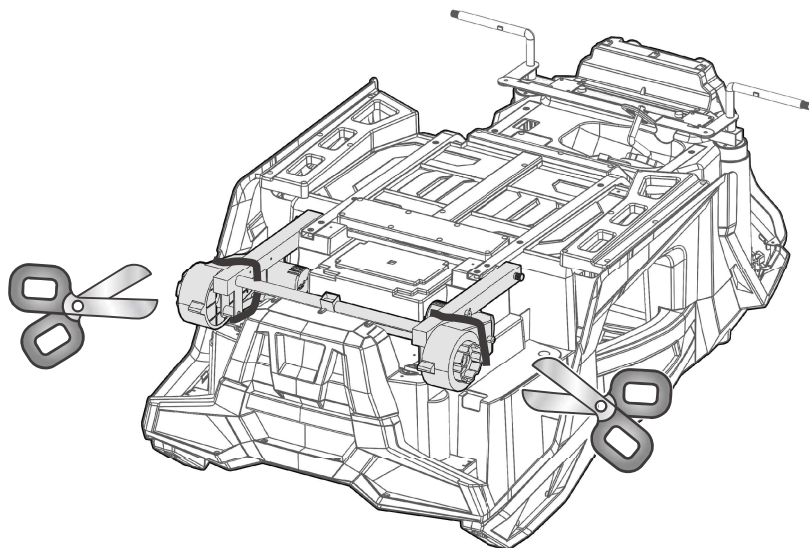


**Scissors**

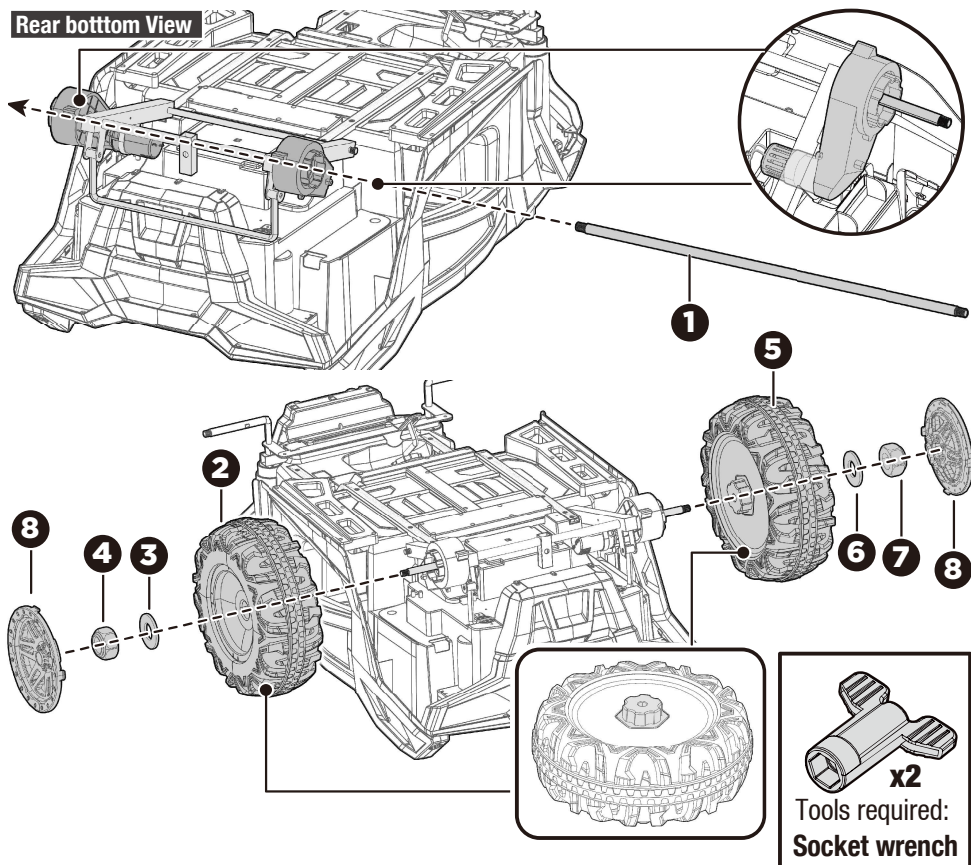


HINT: Some parts shown are assembled on both sides of vehicle





1,2. Cut the cable ties on the both gear boxes with scissors. Lift the rear beam and snap the support into the latch on the body.

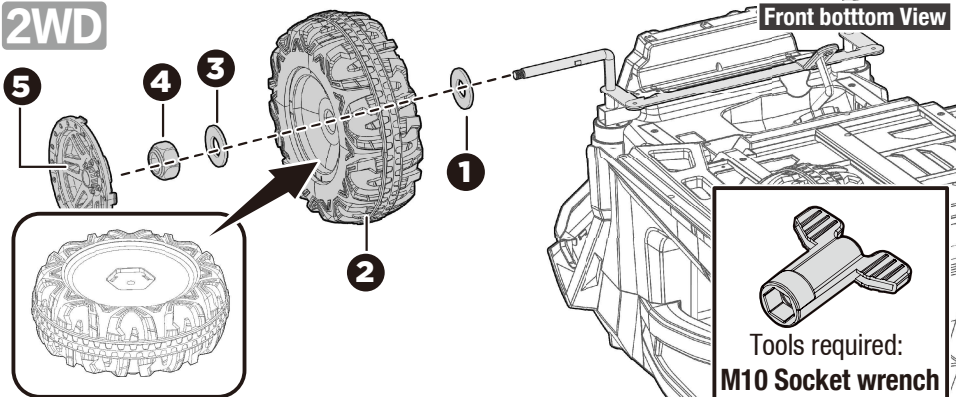


1. Pass the rear axle through the holes in the gear box on one side of the rear beam, the holes in rear beam, and through the holes in the gear box on the other side.
2. Fit a driving wheel onto the rear axle, then ensure the gear side on the driving wheel matches the gear box.
3. Slide a  $\varnothing 12$  washer onto rear axle.
4. Tighten a locknut to the end of the rear axle with a socket wrench (included).
- 5-7. Repeat steps 2-4 to assemble the other driving wheel to the rear axle. **HINT:** An extra socket wrench has been provided to hold the Lock nut on the other side of the rear axle while tightening the lock nut on the other side.
8. Snap the wheel covers to the wheels.

Please choose the appropriate assembly steps based on the configuration of your product.

## 2WD

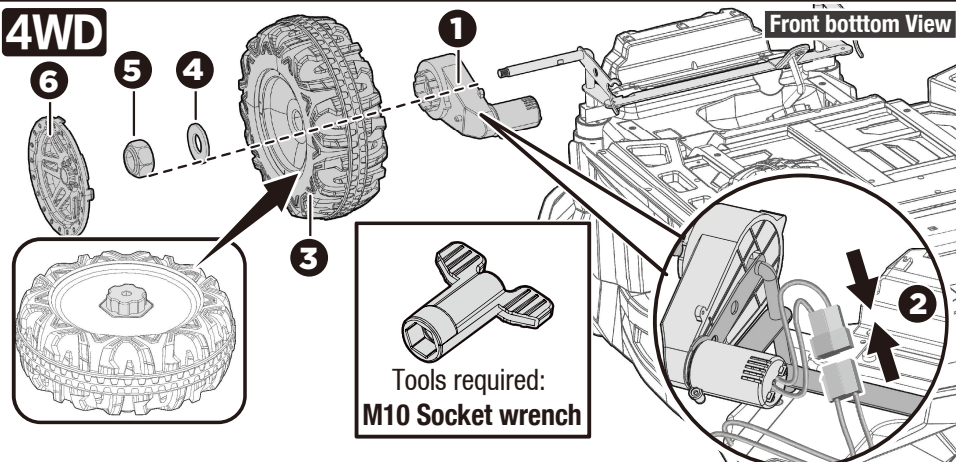
Front bottom View



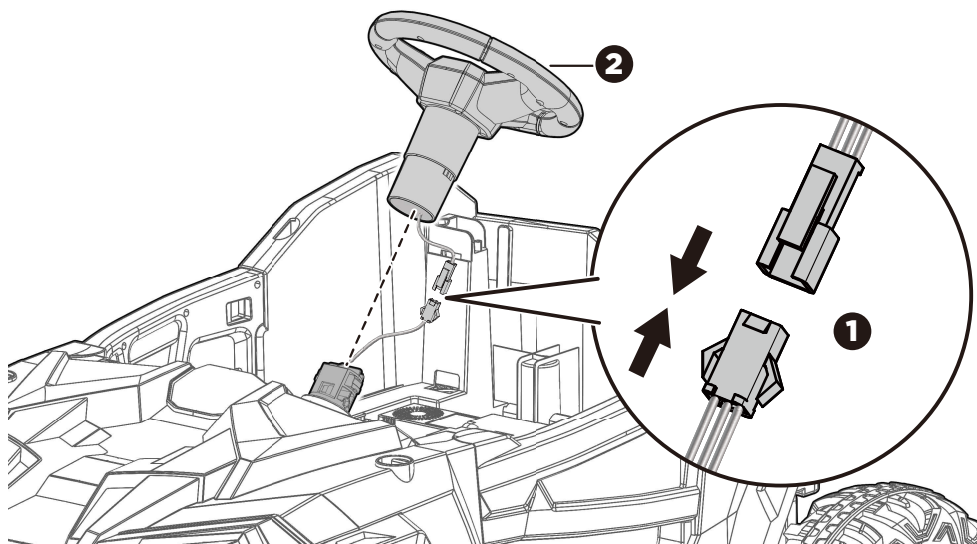
1. Slide a  $\varnothing 12$  washer onto the front axle.
  2. Slide the **Normal wheel** onto the front axle.
  3. Slide another  $\varnothing 12$  washer onto the front axle.
  4. Tighten a lock nut to the end of the front axle with a socket wrench.
  5. "Snap" the wheel cover to the front wheel.
- Repeat for the other front wheel.

## 4WD

Front bottom View

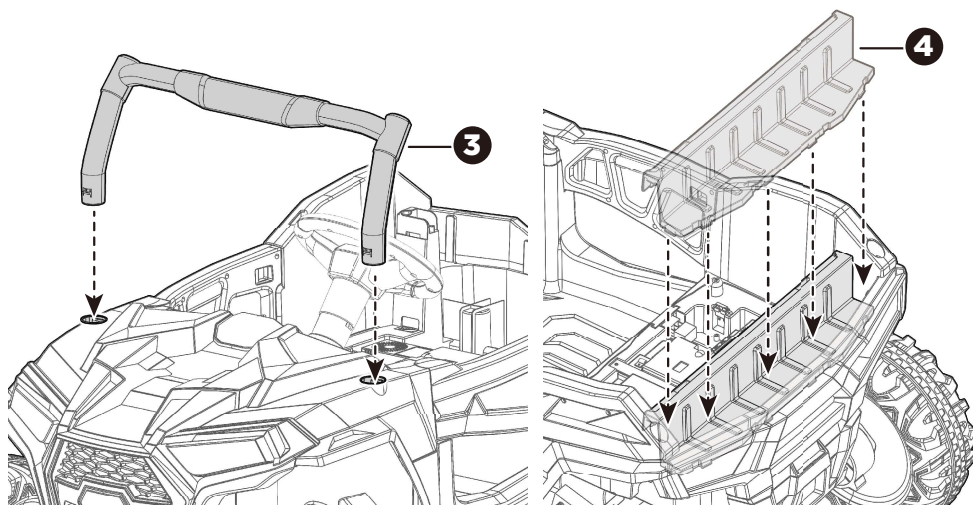


- 1-2. Slide a **front gear box (the one with a motor hood)** onto the front axle. Plug the connector of the gear box to the connector from the vehicle body.
  3. Slide the **Driving wheel** onto the front axle.
  4. Slide a  $\varnothing 12$  washer onto the front axle.
  5. Tighten a lock nut to the end of the front axle with a socket wrench.
  6. "Snap" the wheel cover to the front wheel.
- Repeat for the other front wheel.

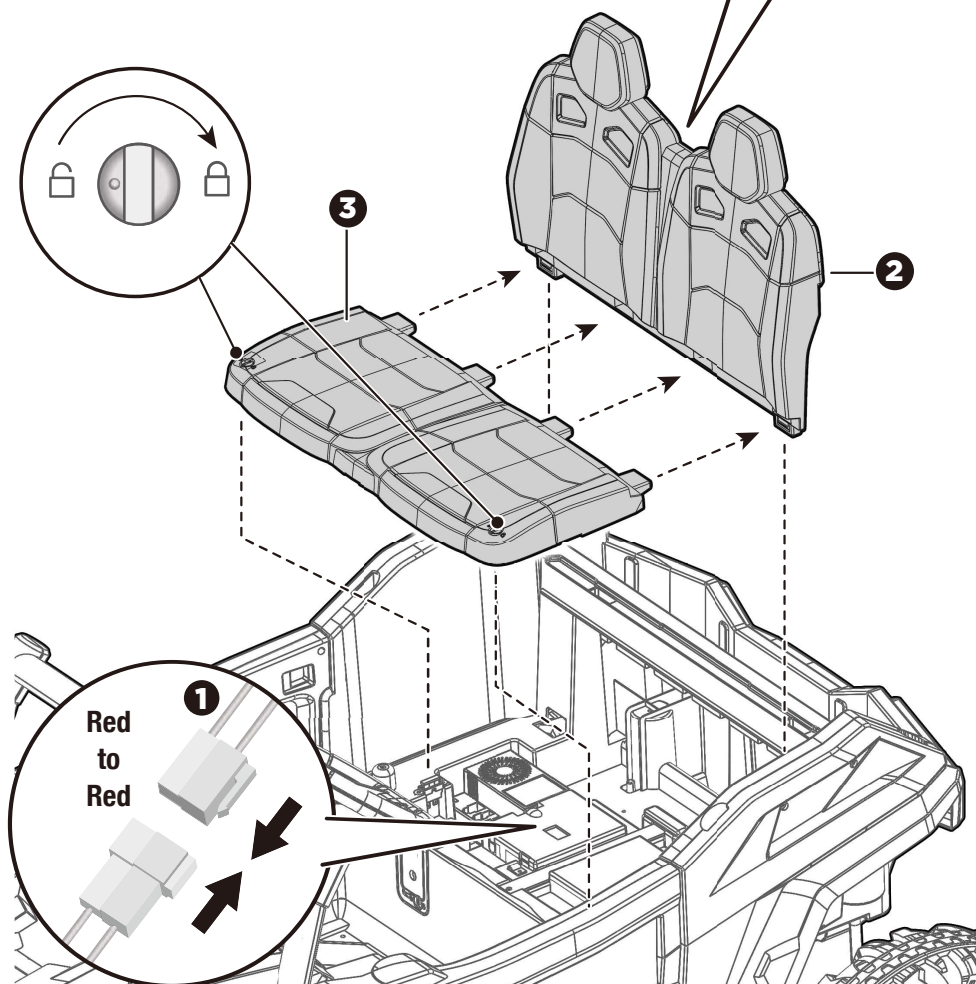
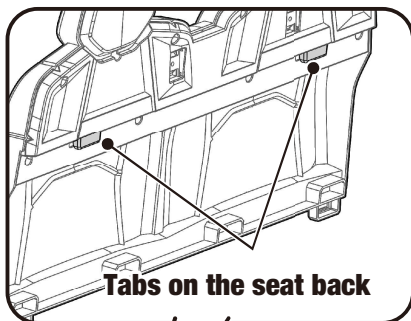


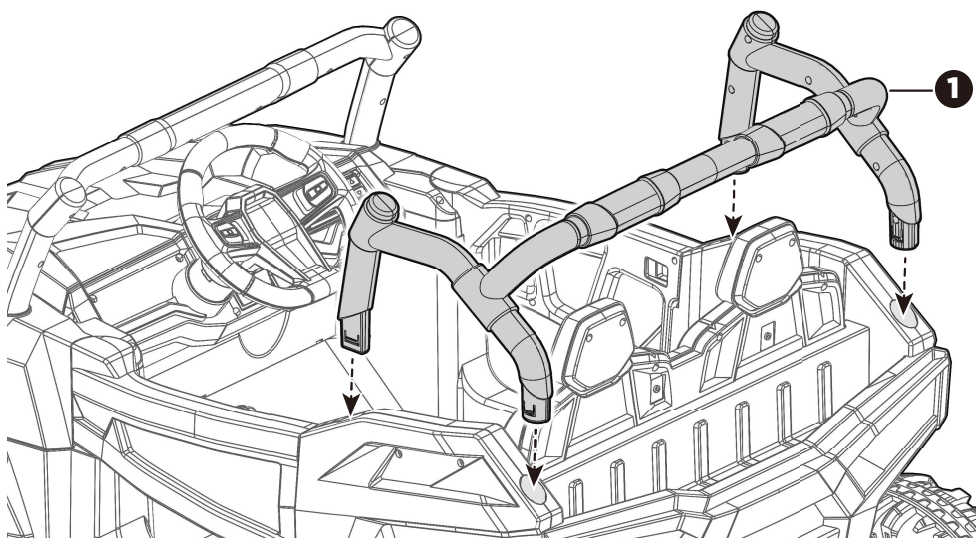
Turn the vehicle body upright.

1. Plug the horn connector on the steering wheel into the connector from the vehicle body. Then hide the connects into the hole on the vehicle body.
2. Fit the steering wheel to the steering wheel link, and push until you hear it “click” into place.
3. Insert the tabs on front roll bar into the grooves in the body, push until you hear it “click” into place.
4. Insert the tabs on the rear trunk plate into the holes on the body, push down firmly until you hear a “click”.

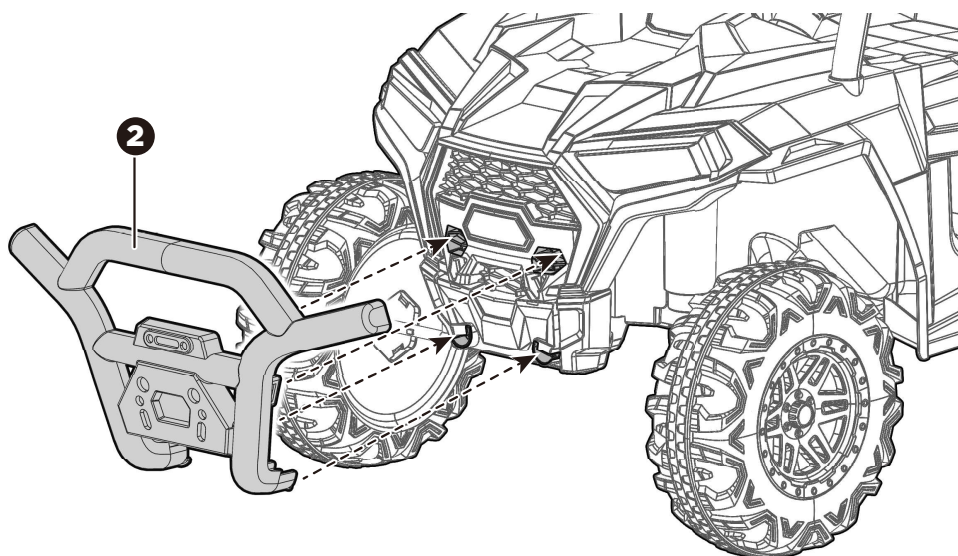


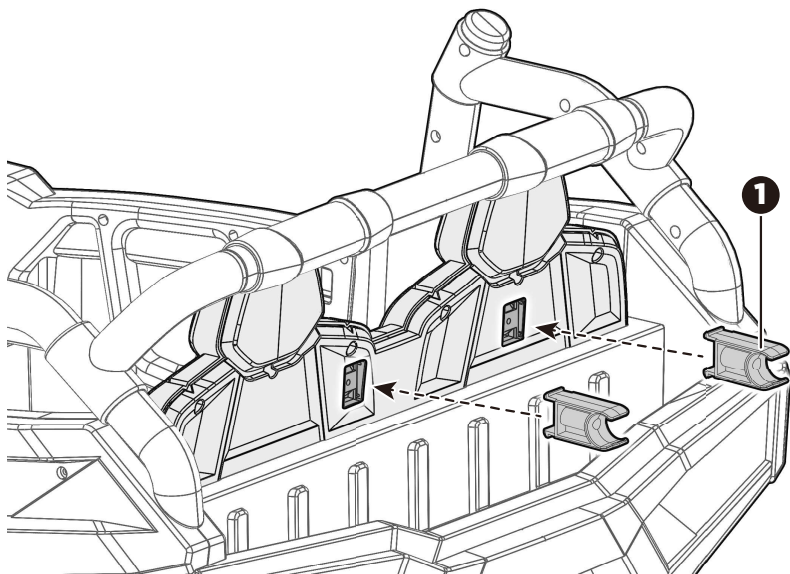
1. Plug the red connectors on the body into the red connectors on the motors.
2. Fit the tabs on the seat back into the holes on the body.
3. Using a slotted screwdriver (not included) or coin to turn the both seat locks to the unlock position. Fit the seat cushion to the body, turn the both seat locks to the lock position to secure the seat.



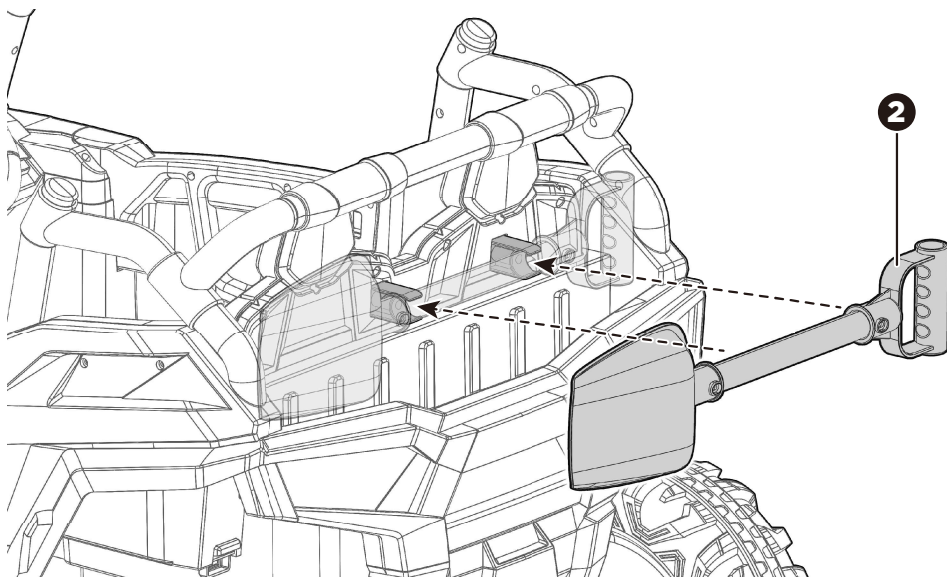


1. Fit the light rack assembly to the rear end of the body.
2. Fit the bull bar to the front end of the body.



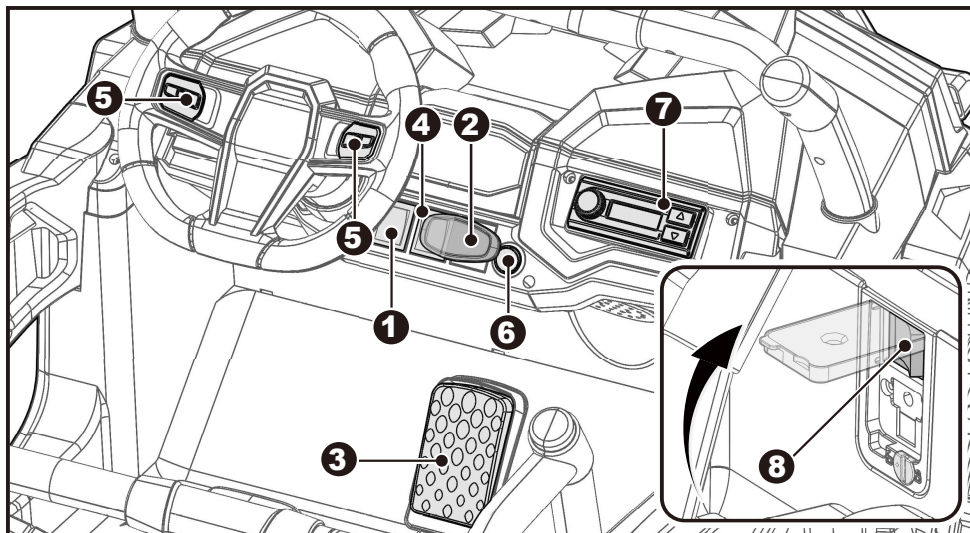


1. Fit the spade holders to seat back.
2. Fit the spade to the seat back.

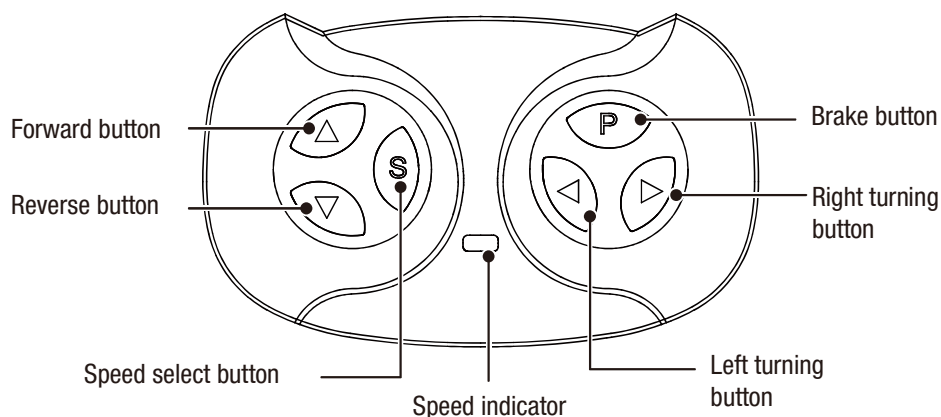




- Always stop vehicle when changing the speed (if equipped) or direction to avoid damaging the gears and motors.
- Please keep a distance from the sound source to prevent hearing damage.
- Use the vehicle on generally level ground ONLY!



- 1. Power switch (key start):** Turns the product on and off.
- 2. Forward/reverse lever:** Changes the direction that vehicle moves from forward to reverse.
  - To move the product forward, press the switch to top position.
  - To move the product backward, press the switch to down position.
- 3. Foot pedal:** Applies power (speed) to the vehicle.
  - To move the product, press the pedal down.
  - To brake or slow down, release pressure from the pedal.
- 4. High/low speed switch:** Control the product forward in high and low speed.
- 5. Horn & Music buttons.**
- 6. Lights switch:** Turns the lights on and off.
- 7. Music player.**
- 8. RC-Manual switch (if equipped, this switch is below the seat. Turn the lock to unlock position to open the cover.):** Press it to the "RC" position, the product will only be controlled by the Remote Controller. Press it to "Manual" position, the product will only be controlled by the driver.  
**or Swing switch (if equipped):** Switches the product to swing mode, in this mode the product cannot move.

**WARNING:****ADULT OPERATING REQUIRED!**

### Attach the batteries of controller

Lift the battery compartment door on the back of the controller and insert two AAA(LR03) batteries.

**HINT: Batteries not included. Refer to the Battery Information on the page 1.**

### 1. Build connection

Long press the forward and reverse buttons for 3 seconds, and the speed indicator flashes. Then power on the vehicle, the speed indicator goes to long bright, means the connection successful. If the speed indicator no response, means the connection failed. Replace the batteries and retry.

### 2. Brake button

Press the button to stop the vehicle, press it again to release the brake.

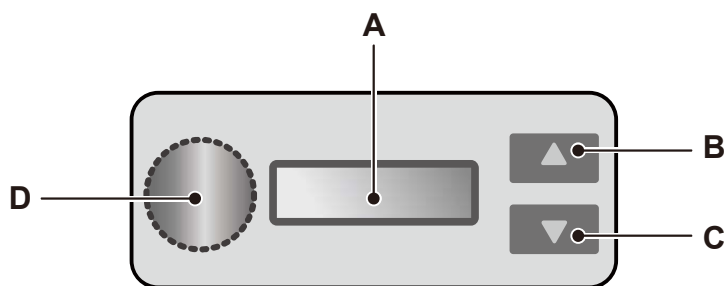
### 3. Speed select button

The switch operates the vehicle to move in low, normal or high speed.

**HINT:** This switch won't work while your vehicle moves reverse.

### NOTE:

- The R/C-MANUAL switch must be rock into "R/C" position when using the RC function.
- Leave the remote controller idling for about 10 seconds, it will shut down automatically.
- Rebuild connection when you replace the batteries of the remote controller.



**A. Display Screen:** When the product is stopped, it displays the remaining battery level. If the displayed value falls below 12 (for 12V products) or 24 (for 24V products), please recharge the battery.

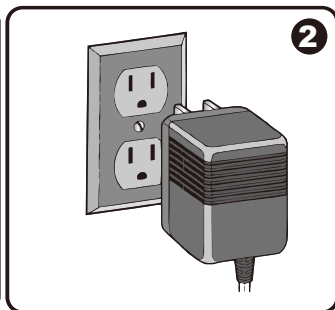
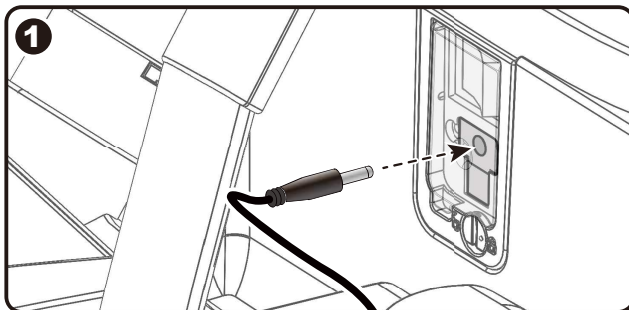
**B. Previous Track**

**C. Next Track**

**D. Volume knob:** Adjust the volume up or down. Press down knob to enter wireless connection mode.

**⚠ WARNING!**

- **ONLY an adult is allowed charge and recharge the battery!**
- **This product with Charging Protection: when charging, all functions will be cut off.**
- The POWER SWITCH must be turned in OFF position when charging.
- Before the first use, you should charge the battery for 4-6 hours. Do not recharge the battery for more than 10 hours to avoid overheating the charger.
- When the vehicle begins to run slowly, recharge the battery.
- After each use or once a month minimum recharge time as 6 to 8 hours, less than 10 hours at most.
- Use the only rechargeable battery and charger supplied with your vehicle. NEVER substitute the battery or the charger with another brand. Using another battery or charger may cause a fire or explosion.
- Do not use the battery or charger for any other product.



1. Open the charging cover. Plug the charger port into the input socket (the socket is below the seat).
2. Plug the charger plug into a wall outlet. The battery will begin charging.

**Battery Disposal**

The battery will eventually lose the ability to hold a charge. Depending on the amount of use, and varying conditions, the battery should operate for one to three years.

**Important!** Recycle the dead battery responsibly. The battery contains lead acid (electrolyte) and must be disposed of properly and legally. It is illegal in most areas to incinerate lead acid batteries or dispose of them in landfills. Take it to a federal or state-approved lead acid battery recycler, such as local automotive battery retailer.

Do not throw the battery away with your regular household waste!

Problem	Possible Cause	Solution
Vehicle does not run	Battery low on power	Recharge battery.
	Thermal fuse has tripped	Reset fuse, see <Fuse>
	Battery connector or wires are loose	Check that the battery connectors are firmly plugged into each other. If wires are loose around the motor <b>contact your distributor please.</b>
	Battery is dead	Replace battery, <b>contact your distributor please.</b>
	Electrical system is damaged	<b>Contact your distributor please.</b>
	Motor is damaged	<b>Contact your distributor please.</b>
Vehicle does not run very long	Battery is under charged	Check that the battery connectors are firmly plugged into each other when recharging
	Battery is old	Replace battery, <b>contact your distributor please.</b>
Vehicle runs sluggishly	Battery low on power	Recharge battery, <b>contact your distributor please.</b>
	Battery is old	Replace battery, <b>contact your distributor please.</b>
	Vehicle is overload	Reduce weight on vehicle.
	Vehicle is being used in harsh conditions	Avoid using vehicle in harsh conditions, see <Safety>.
Vehicle needs a push to go forward	Poor contact of wires or connectors	Check that the battery connectors are firmly plugged into each other. If wires are loose around the motor, <b>contact your distributor please.</b>
	"Dead Spot" on motor	A dead spot means the electric power is not being delivered to the terminal connection and the vehicle needs repair. <b>Contact your distributor please.</b>
Difficult shifting from forward to reverse or vice-versa	Attempting to shift while the vehicle is motion	Completely stop the vehicle and shift, see <Use Your Ride-On>
Loud grinding or clicking noises coming from motor or gear box	Motor or gears are damaged	<b>Contact your distributor please.</b>
Battery will not recharge	Battery connector or adapter connector is loose	Check that the battery connectors are firmly plugged into each other.
	Charger not plugged in	Check that the battery charger is plugged into a working wall outlet.
	Charger is not working	<b>Contact your distributor please.</b>
Charger feels warm when recharging	This is normal and not a cause for concern	

Completely read through this manual and the troubleshooting guide table before calling. If you still need help resolving the problem **Contact your distributor please.**

- It is parents' responsibility to check main parts of the toy before using. Must regularly examine for potential hazard, such as the battery, charge, cable or cord, plug, screws are fastening enclosure of other parts and that in the event of such damage, the toy must not be used until that damage had been properly removed.
- Park the vehicle indoors or cover it with a tarp to protect it from wet weather.
- Recharge the battery after each use. Only an adult can handle the battery. Recharge the battery at least once a month when the vehicle raider is not being used.
- Do not wash the vehicle with a hose. Do not wash the vehicle with soap and water. Do not drive the vehicle in rainy or snowy weather. Water will damage the motor, electric system and battery.
- Clean the vehicle with a soft, dry cloth. To restore shine to plastic parts, use a non-wax furniture polish. Do not use car wax. Do not use abrasive cleaners.
- When not using, all the electrical source should be turn off. Turn off the power switch and disconnect the battery connection.

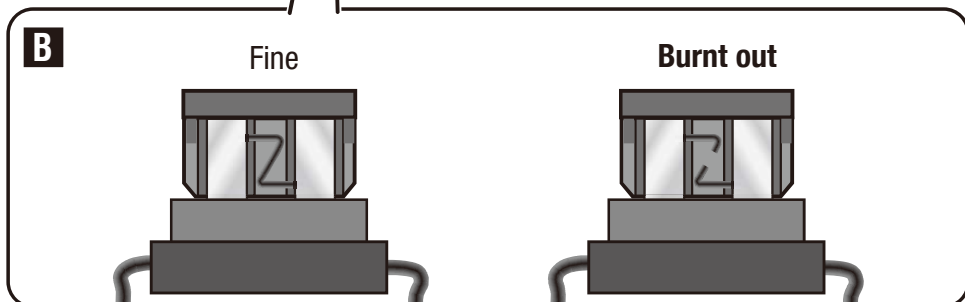
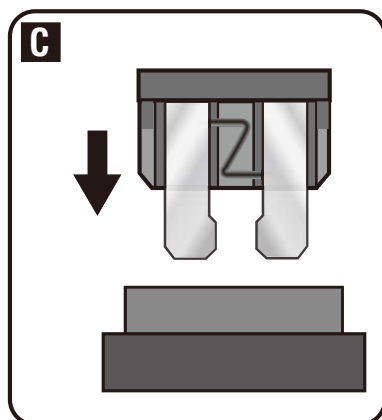
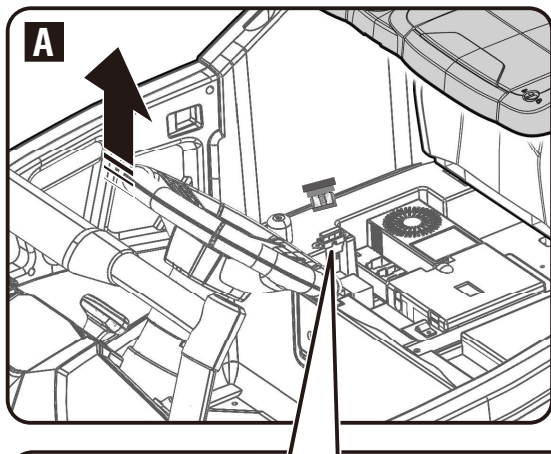
## Battery Fuse

---

The product is equipped with a 20A self-resetting fuse that will automatically trip and cut all power to the vehicle if the motor, electric system or battery is overloaded. The fuse will reset and power will be restored after the unit is turned OFF for 20 seconds and then turned ON again. If the thermal fuse trips repeatedly during normal use, the vehicle may need repair. **Contact your distributor please.**

To avoid losing power, follow these guidelines:

- Do not overload the vehicle.
- Do not tow anything behind the vehicle.
- Do not drive up steep slopes.
- Do not drive into fixed objects, which may cause the wheels to spin, causing the motor to overheat.
- Do not drive in very hot weather, components may overheat.
- Do not allow water or other liquids to come in contact with the battery or other electric components.
- Do not tamper with the electric system. Doing so may create a short, causing the fuse to trip.



When the vehicle lights won't work, please check the fuse first and see whether it is burnt out. If the fuse is broken (fig B), please change with a new one (fig C), there is a spare fuse in the assembly package. The fuse is under the seat cushion, beside the battery (fig A).



## WARNING:

**RISK OF FIRE.** Do not bypass. Replace only with a 2A fuse.

