

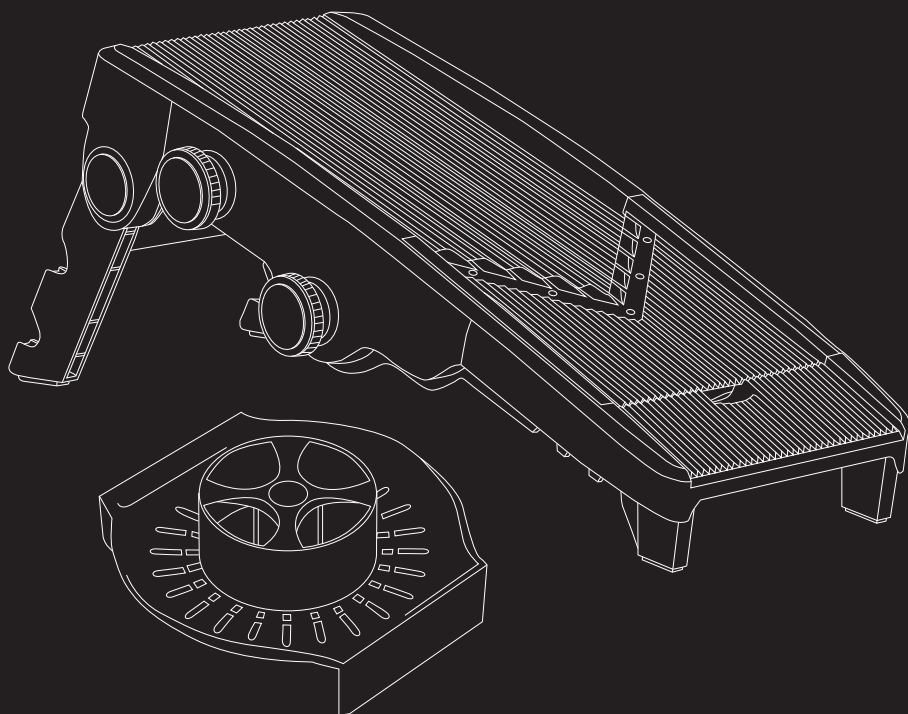
MLR01001010N

MANUAL

# **Mueller**

## **V-PRO 5-BLADE MANDOLINE SLICER**

MULTI-PURPOSE

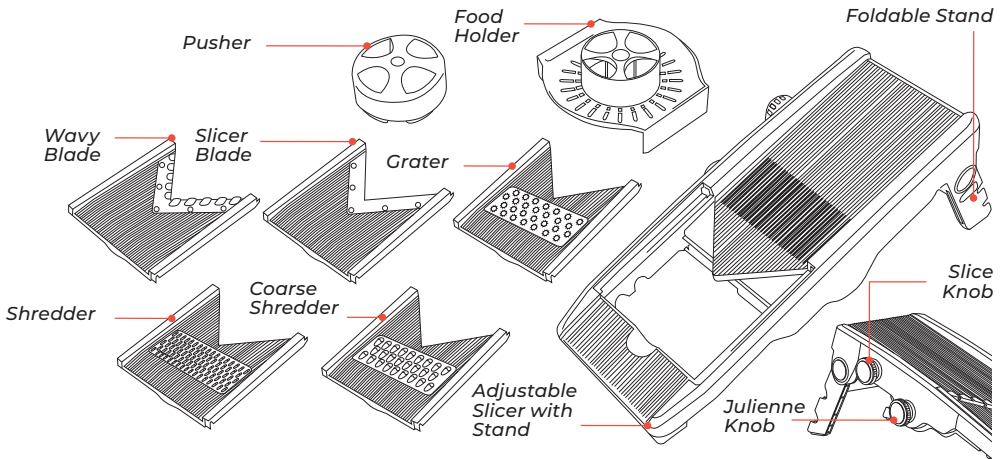


# ■ IMPORTANT SAFETY INSTRUCTIONS

- Please always use the food holder to catch the foods, otherwise it may increase the risk of injury.
- Use this product on a dry, clean, flat, and solid surface.
- The food holder is designed to protect your fingers. Make sure you cut the food to fit the food holder.
- The appliance is not to be used by persons (including children) with reduced physical, sensory or mental capabilities, or lack of experience and knowledge.
- This is not a toy. Keep the appliance out of reach of children. Close supervision is necessary when any appliance is used by or near children.
- This appliance is designed for household use only.
- Store Blades inside the Blade Box.

**⚠ CAUTION!**  
**Sharp blades! Use extra care when using, washing and storing this product.**

# ■ OVERVIEW OF PARTS



# ■ INSTRUCTIONS FOR USE



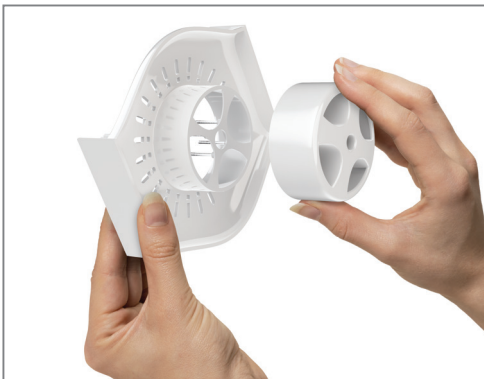
- 1 Using the Stand and front support Legs:
  - **On a flat surface:** Turn the Mandoline over. Pull out the Stand until locked. Use on a clean, flat surface.
  - **With a container:** Keep the Stand folded underneath the Mandoline Slicer. Place the slots on the bottom of the Slicer on a bowl or plate or container edge.

**NOTE:** Remember to hold the Stand handle when slicing.
- 2 Grasp the Protective Sides when inserting the Blades. Do not grasp by Blades directly. Slide the Blade into the open slot, aligning top edges and sides, then press down to secure. Do not force or handle Blades directly when attaching. If there is an issue with attaching Blades, contact us.

**NOTE:** To remove a Blade, push up from the bottom for your safety.

**BEFORE FIRST USE! Wash and dry all components thoroughly prior to use. Use care when handling the sharp blades.**

**⚠ CAUTION! Blades are extremely sharp. Handle with care.**



**⚠ CAUTION! Food Pins are extremely sharp. Handle with care.**



**3** Insert the Pusher into the Food Holder.

**4** Affix your prepared vegetable or fruit to the Food Holder using the food pins.

## ■ ADJUSTING SLICE THICKNESS



**1** Turn the Slice Knob near the rear Stand to adjust the slice thickness.



**2** Adjust slice thickness from 1–9 mm with the Slice Knob. This moves the slideway up and down to create thin or thick slices.



**3** For safety, hold the Stand Handle and use the Food Holder when using the Mandoline. Slide the Food Holder along the Slideway after you adjust your slice thickness or julienne size with the knobs.

## ■ ADJUSTING JULIENNE SIZE



**1** The Julienne Knob (on the side, center of the slicer) adjusts size. Pull the knob out, then turn it left or right to change blade position. Blades will cut 6 mm or 9 mm julienne slices.



**2** Open the Julienne Blade Cover (on the back) to clean the Julienne Blades.

## ■ MANDOLINE BEST PRACTICES

- Slice or julienne many fruits and vegetables with our Mandoline Slicer, which acts as a garlic/onion chopper, grater, shredder, and waffle fry potato slicer.
- Great for making salads, prepping for wok or sauté pans, slicing vegetables for deep frying, and preparing cheese.
- Control thickness and size with the Slicer Knob and Julienne Knob.
- Prepare your vegetables and fruits before slicing them. Wash and cut them so they will fit on the Food Holder pins.
- Always grip the handle on the Stand when slicing.
- Align the Food Holder edges with the Slideway edges when slicing.
- Wash the Mandoline and Blades after each use to prevent staining and remove excess food. Some people find using running water and a small brush (not included) helpful for clearing food residue.
- When grating cheese or chocolate, ensure the Mandoline, the Grater Blade, and your workspace is completely dry.

## ■ CLEANING AND STORAGE

- Wash and carefully dry this product after use immediately to avoid staining.
- We recommend using a cleaning brush (not included) to clear any food residue. Do not use fingers to remove, dislodge, or clean blades.
- Use extra care when cleaning the blades.
- Do not use corrosive solvents to wash this product.
- This product is TOP-RACK dishwasher safe.
- Keep the dishwasher temperature below 158°F (70°C).
- Keep this product away from high heat. Do not put the main unit or the parts in an oven or a microwave oven.

**⚠ CAUTION! Blades are extremely sharp. Handle with care.**

## ■ 1-YEAR LIMITED WARRANTY

This product is warranted to be free from defects in material and workmanship under normal use and service for one year from the date of the original purchase with the receipt. The manufacturer's obligation shall be limited to repairing or replacing any part of the product that is defective. Such warranty shall not apply to damages resulting from accidents, abuse, or misuse.

# ■ Mueller

### V-PRO 5-BLADE MANDOLINE SLICER

MULTI-PURPOSE

### HAPPINESS IS HOMEMADE

SKU: MLR010010N  
MODEL: MU-MANDO

MUELLERDIRECT.COM  
SUPPORT@MUELLERDIRECT.COM  
MADE IN CHINA

IMPORTED BY HOMELABS UK  
UNIT 8, SHAKESPEARE  
INDUSTRIAL ESTATE, WATFORD,  
WD24 5RR, ENGLAND

DISTRIBUTED BY MUELLER  
350 SPRINGFIELD AVENUE  
SUITE #200  
SUMMIT, NJ 07901