

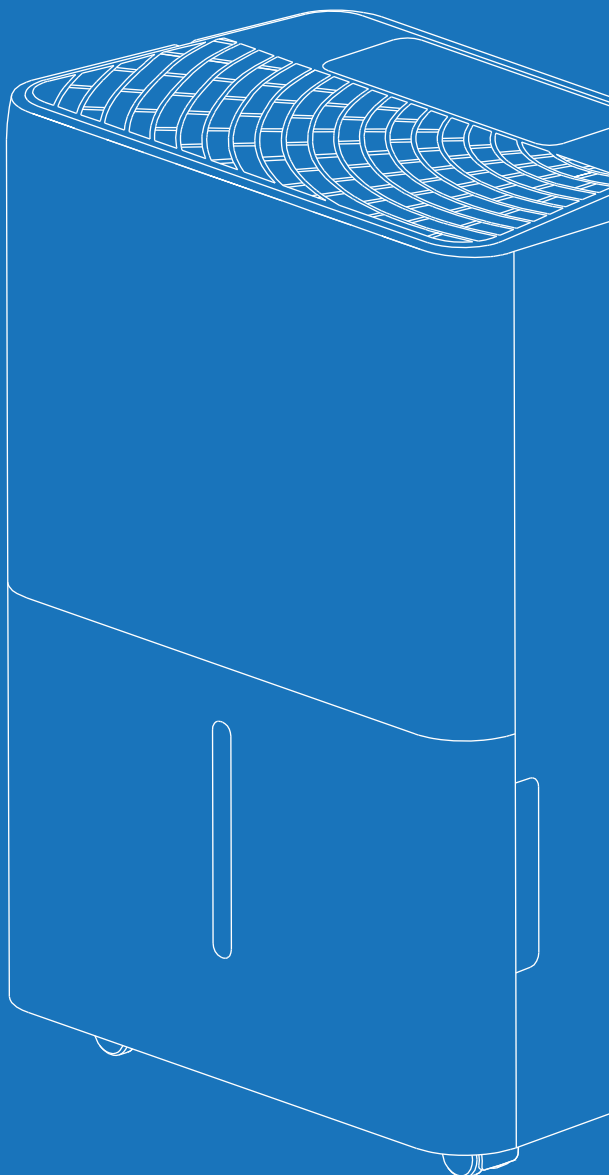
# Dehumidifier

25 Pint & 32 Pint

homeLabs™

MODEL:  
HME0088 & HME0089

Thank you for purchasing our appliance. Please be sure to read the entirety of this user manual carefully prior to using this appliance. If you have any questions regarding the use of this product, please contact Customer Service at [homelabs.com/help](https://homelabs.com/help) or [help@homelabs.com](mailto:help@homelabs.com)





## Before First Use


To prevent any internal damage, it is very important to keep the units upright throughout its journey. Please leave it standing upright and outside the box for **24 HOURS** before plugging it in.

In the event this product malfunctions, or you believe it is defective, please contact Customer Service at [homelabs.com/help](https://homelabs.com/help) or [help@homelabs.com](mailto:help@homelabs.com) and hold onto the defective product (pending further instruction). A defective product should be clearly marked or stored where it cannot be used by mistake. Failure to keep the product in its original quality from the time of receipt may impede hOmeLabs's ability to correct any legitimate problem and may limit the extent to which hOmeLabs may provide recourse.

## Table of Contents

Important Safety Instructions .....	4–7
Parts Description .....	8–9
Operation.....	10–13
Cleaning and Maintenance.....	14–15
Troubleshooting.....	16–17
FCC Regulatory Conformance.....	17–18
Warranty.....	18–19
Manufacturing Info.....	19
Warning.....	19
Contact Us.....	19

Congratulations  
on bringing home your new appliance!

A stylized illustration of a blue landscape. The foreground is a solid blue area. In the background, there is a light blue hill with a small, simple house on top. The house has a dark blue roof and a chimney.

Don't forget to register your product at [homelabs.com/reg](https://homelabs.com/reg)  
for updates, coupons, and other relevant information.

Although greatly appreciated, product registration  
is not required to activate any warranty.



# IMPORTANT SAFETY INSTRUCTIONS

- This appliance is for household use only.
- Disconnect the appliance from its power source during service and when replacing parts and cleaning.
- Please note: Check the nameplate for the type of refrigerant gas used in your appliance.
- Specific information regarding appliances with refrigerant gas.
- Do not pierce the cooling circuit of the machine. At the end of its useful life, deliver the appliance to a special waste collection centre for disposal.
- GWP (Global Warming Potential): R410A: 2088, R134a: 1430, R290: 3, R32: 675.
- This hermetically sealed system contains fluoridated greenhouse gases.
- ENVIRONMENTAL INFORMATION: This unit contains fluoridated greenhouse gases covered by the Kyoto Protocol.
- Do not use this unit for functions other than those described in this instruction manual.
- Make sure the plug is plugged firmly and completely into the outlet. Failure to firmly secure the plug in the outlet may result the risk of electric shock or fire.
- Do not plug other appliances into the same outlet, it can result in the risk of electric shock.
- Do not disassemble or modify the appliance or the power cord, it can result in the risk of electric shock or fire. All other services should be referred to a qualified technician.
- Do not place the power cord or appliance near a heater, radiator, or other heat source. It can result in the risk of electric shock or fire.
- This unit is equipped with a cord that has a earthed wire connected to an earthed pin or grounding tab. The plug must be plugged into a socket that is properly installed and earthed. Do not under any circumstances cut or remove the earthed pin or grounding tab from this plug.
- The unit should be used or store in such a way that it is protected from moisture e.g. condensation, splashed water, etc. Unplug unit immediately if this occurs.
- Always transport your appliance in a vertical position and place on a stable, level surface during use. If the unit is transported laying on its side, stand the unit upright and unplugged for 24 hours before use.
- Always use the switch on the control panel or remote controller to turn the unit off, and do not start or stop operation by plugging in or unplugging the power cord. It can result in the risk of electric shock.
- Do not touch the buttons on the control panel with wet or damp fingers.
- Do not use hazardous chemicals to clean or come into contact with the unit. To prevent damage to the surface finish, use only a soft cloth to clean the appliance. Do not use wax, thinner, or a strong detergent. Do not use the unit in the presence of inflammable substance or vapour such as alcohol, insecticides, gasoline, etc.
- If the appliance is making unusual sounds or is emitting smoke or an unusual odor, unplug it immediately.
- Do not clean the unit with water. Water can enter the unit and damage the insulation, creating a shock hazard. If water enters the unit, unplug it immediately and contact Customer Service.

- Utilize two or more people to lift and install the unit.
- Always grasp the plug when plugging in or unplugging the appliance. Never unplug by pulling on the cord, it can result in the risk of electrical shock and damage.
- Install the appliance on a sturdy, level floor capable of supporting up to 110 lb (50 kg). Installation on a weak or unlevel floor can result in the risk of property damage and personal injury.
- Details of type and rating of fuses: T, 250V AC, 3.15A.

## **WARNING**

- This appliance is not intended for use by persons (including children) with reduced physical, sensory or mental capabilities, or lack of experience and knowledge, unless they have been given supervision or instruction concerning use of the appliance by a person responsible for their safety.
- Children should be supervised to ensure that they do not play with the appliance.
- If the SUPPLY CORD is damaged, it must be replaced by the manufacturer, its service agent or similarly qualified persons in order to avoid a hazard.
- The appliance should be installed in accordance with national wiring regulations.
- Do not use any means to accelerate the defrosting process or to clean, other than those recommended by the manufacturer.
- The appliance should be stored in a room that does not contain continuously operating ignition sources (for example: open flames, an operating gas appliance or an operating electric heater).
- Do not pierce or burn.
- Be aware that refrigerants may not contain an odour.
- If you suspect a leak or the unit is not performing as expected, immediately stop using the unit and contact Customer Service

## **ELECTRICAL CONNECTIONS**

Before plugging the appliance into the mains socket, check that:

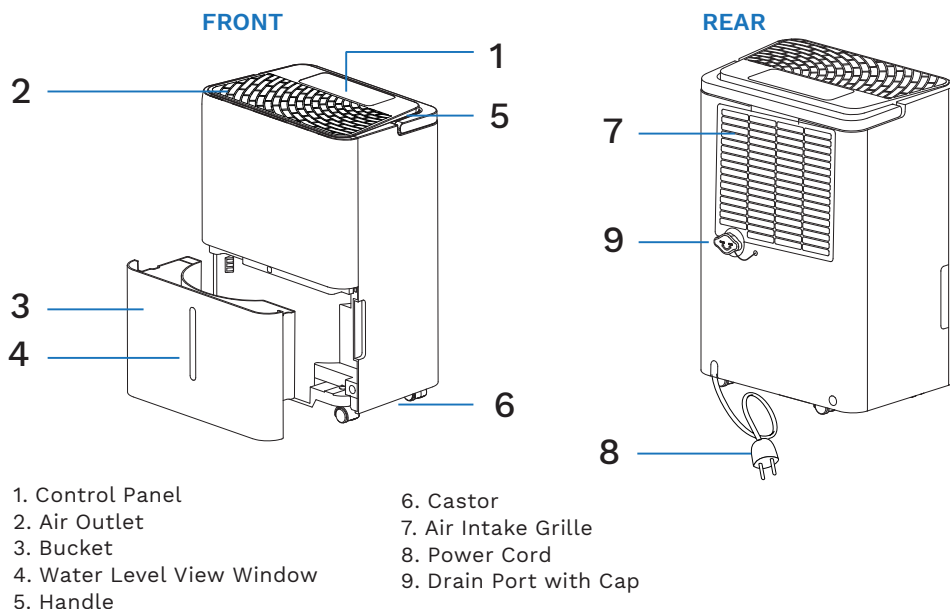
- The mains power supply corresponds to the value indicated on the rating plate on the back of the appliance.
- The power socket and electrical circuit are adequate for the appliance.
- The mains socket matches the plug. If this is not the case, have the plug replaced.
- The mains socket is adequately earthed. Failure to follow these important safety instructions absolves the manufacturer of all liability.

## **SOME NOTIONS ON HUMIDITY**

- Air always contains a certain amount of water in the form of vapour. This determines the level of humidity in an atmosphere. The capacity of the air to hold water vapour increases with temperature. This is why in our homes, as soon as the temperature decreases, the vapour contained in the air condenses, as is evident on the colder surfaces in the room, such as the windows, walls etc. The purpose of a Dehumidifier is to remove the excess moisture from the air, avoiding the damage caused by condensation.
- Experts have established that the optimum environmental conditions for our well being and for the home are obtained between 40% and 60% relative humidity. With very low temperatures, you are recommended to heat the room even minimally. This considerably increases the dehumidifying power of the appliance. With heating, the condensation formed by the water vapour on windows and other cold surfaces evaporates into the air to be collected by the Dehumidifier. Air leaving the Dehumidifier is usually about 1–2°C warmer than room temperature.

**SAVE THESE  
INSTRUCTIONS**  
For Household Use Only

### COMPONENT DESCRIPTION

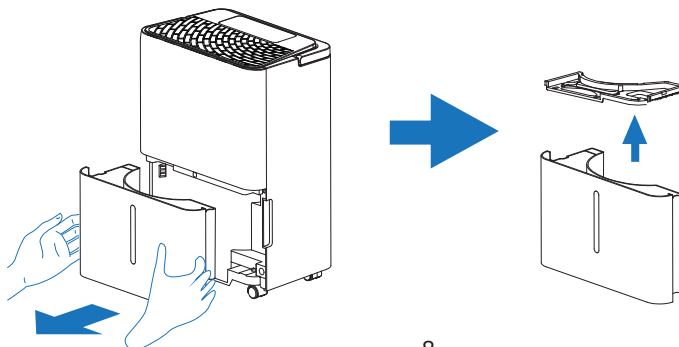


#### NOTE:

All the illustrations in the manual are for explanation purpose only. Your Dehumidifier may vary slightly. The design and specifications are subject to change without prior notice for product improvement. Consult Customer Service for details.

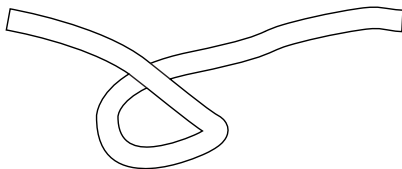
#### Before use remove the accessory from the bucket

- Remove the bucket from appliance.
- Take out of the the plug, and other accessories.
- Correctly put back the bucket into the appliance.





**ACCESSORIES INCLUDED**



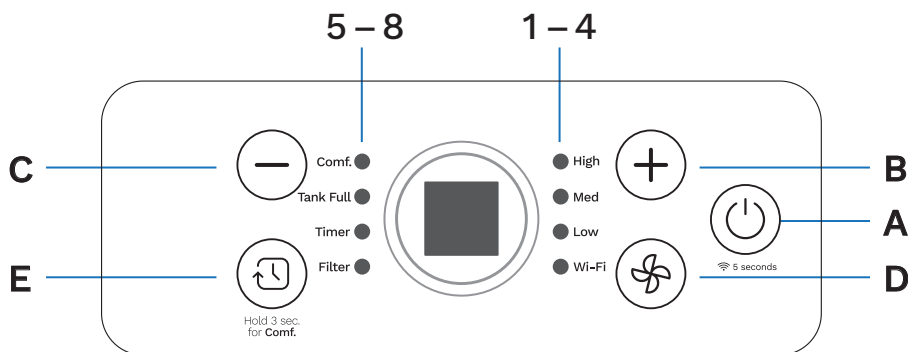
Drain Pipe

1 set

length: 1 m, ID 12.7 mm, OD 15.5 mm

**NOTE:** Be sure all accessories are removed from the packing and Bucket before use.

## CONTROL PANEL



- |                    |                    |                        |
|--------------------|--------------------|------------------------|
| A. "Power" button  | 1. High Indicator  | 5. Comfort Indicator   |
| B. Increase button | 2. Med Indicator   | 6. Tank Full Indicator |
| C. Decrease button | 3. Low Indicator   | 7. Timer Indicator     |
| D. "Fan" button    | 4. Wi-Fi Indicator | 8. Filter Indicator    |
| E. "Timer" button  |                    |                        |



### "Power" button

On / off power supply, used to control the start-up or shut down the appliance.

### Decrease / Increase button

Press **+** or **-** to select the indoor humidity level you expect to achieve, or set the time.




### Wi-Fi Pairing Feature

To enter pairing mode, please press the "Power" button for 5 seconds. Please refer to the "Pairing Instructions" and APP for more details.






### "Fan" button

Press the  button to choose different fan speed, and corresponding symbol will be lighted.

## Operation

### \*Comfort mode

Hold the  button for 3 seconds, the “Comf” symbol will light. The appliance will set humidity according to the ambient temperature. The humidity can not be adjusted and show the ambient humidity.

- The fan speed is low and can not be adjusted.
- When active the comfort mode, the screen light will go to dim, after 1 minute later the screen will turn off.
- Press other button to check the status, the screen will light again and after 1 minute later will turn off.
- Press the  button or hold  button for 3 seconds to quit the Comfort mode.

The level will be controlled per below table:

Ambient	<65°F	65–77°F	>77°F
Relative Humidity	55%	50%	45%





### “Timer” button

This timer can be used to delay the appliance start-up or shutdown, this avoids wasting electricity by optimizing operating periods.



### Decrease / Increase button

Press **+** or **–** to select the indoor humidity level you expect to achieve, or set the time.

### \*Programming start-up

- Turn on the appliance, choose the mode you want, for example Dry mode, 65%RH. Turn off the appliance.
- Press the  button, the screen starts to flash, press the **+** or **–** to adjust the set time from 0.5–24 hours.
- In 5 seconds without the operation, the timer start function, then the “Timer” indicator lights.
- The control will count down the time remaining until start-up.
- Press the  button again to cancel the Timer, and the “Timer” indicator will disappear.

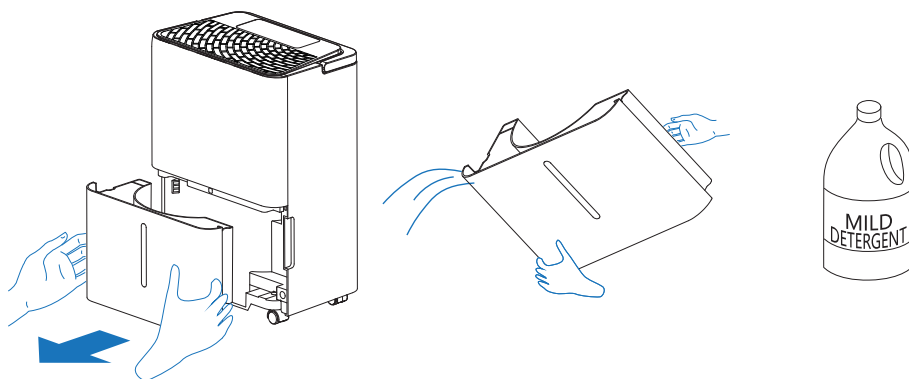
### \*Programming shut down

- When the appliance is running, press the  button, the screen starts to flash, press the **+** or **–** to adjust the set time from 0.5–24 hours.
- In 5 seconds without the operation, the timer start function, then the “Timer” indicator lights.
- Press the  button again to cancel the Timer, and the “Timer” indicator will disappear.

## ALARM OF FULL BUCKET

### Alarm of Full Bucket

- When bucket is full, the compressor will shut off, the fan will stop for a few minutes, and make a beeping noise, "Tank Full" indicator is flashing.
- The unit will not run again until the bucket is emptied and properly placed back inside the unit.
- The bucket should be cleaned every week to prevent the growth of mold, mildew and bacteria. Use a mild detergent to clean. Once clean, completely dry the bucket and place it back inside unit.



**NOTE:** Hold the bucket with both hands when emptying.

**NOTE:** When the bucket is full or removed from the unit, the compressor will turn off but the fan will continue to run for a few minutes. This is completely normal. The unit will not be removing moisture from the air at this time.

**NOTE:** During operation, it is normal for the unit to exhaust warm air from the side of the unit.


### CAUTION:

**Do not place the Bucket on the floor when it is full as the bottom of the Bucket is uneven and may spill water.**

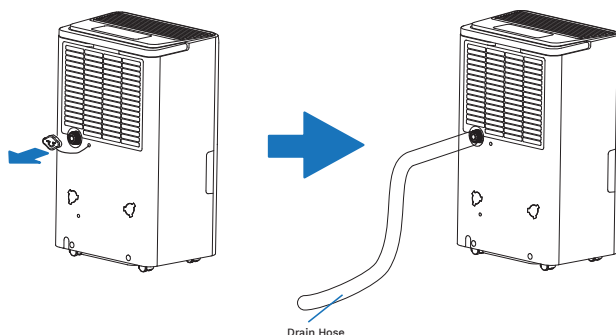
## CONTINUOUS DRAIN

### Continuous Drain

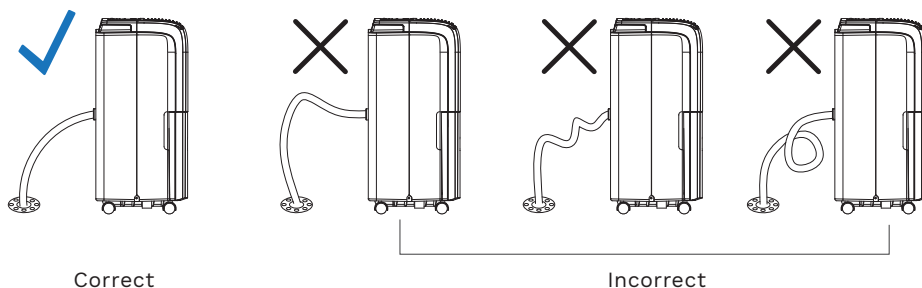
Connect the drain pipe on the back of unit, then the unit can continuous run without clean the bucket.

1. Put the unit on level floor, unscrew the cap on the back of unit;
2. Install the connector of drain and gasket;
3. Install the drain pipe on connector;
4. Press  button to run the unit.

**NOTE:** If no need the function of continuous drain, please install the cap on the drain hole back of the unit, then the water will flow into the bucket.



**NOTE:** Please install the drain pipe follow below picture. Please install the drain pipe correctly, or the water cannot drain from the pipe.



**NOTE:**

Make sure the unit is put on level ground and the Drain Pipe is installed correctly, otherwise the Bucket will be full of water, and the unit stop run. If this issue occurs, please ensure that the ground is level and the drain pipe is correctly installed. Make sure the Bucket is installed correctly.

## Cleaning and Maintenance

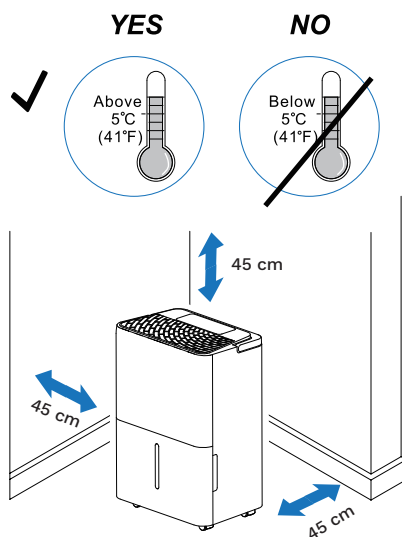
### AUTOMATIC DEFROST

When frost builds up on the evaporator coils, the compressor will cycle off and the fan will continue to run until the frost disappears. When the coils are completely defrosted, the compressor or fan (depending on the model) will automatically restart. The unit starts to dehumidify the room.

### CHOOSING A LOCATION

The unit operating in a basement will have little no effect in drying out an adjacent enclosed storage area, such as a closet, unless there is adequate circulation of air in and out of the area.

1. Do not use outdoors.
2. This appliance is intended for indoor use only. Place the appliance on a smooth, level floor surface that is strong enough to support the unit with a full bucket of water.
3. Allow at least 18 inches (45 cm) of around and above space away from the wall for efficient working.
4. Place the appliance in an area where the temperature will not fall 41°F (5°C).
5. Use the Dehumidifier in cooking, laundry, bathing and dish-washing areas that have excessive moisture.
6. Place the Dehumidifier away from a clothes dryer.
7. Use the Dehumidifier in a basement to help prevent moisture damage.
8. The Dehumidifier must be operated in an enclosed area to be most effective, close all doors, windows and other outside openings to the room.
9. Do not block the air inlet or outlet of the appliance. Reduced air flow will result in poor performance and could damage the unit.



### CLEANING AND MAINTENANCE

Before cleaning or maintenance, turn the appliance off by pressing the “POWER” button on the control panel, wait for a few minutes then unplug from the mains socket.

### CLEANING THE CABINET

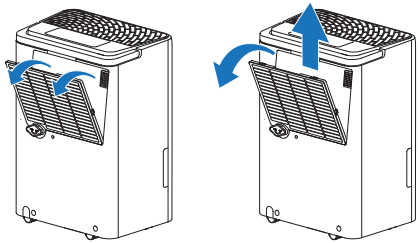
You should clean the appliance with a slightly damp cloth then dry with a dry cloth.

- Never wash the appliance with water, it could be dangerous.
- Never use petrol, alcohol or solvents to clean the appliance.
- Never spray insecticide liquids or similar.

Cleaning and Maintenance

CLEANING THE FILTER

- To keep your appliance working efficiently, clean the filter every month of operation.
- The filter can take out like fig.
- To avoid getting cut, do not touch the metal fins when inserting or removing filter. It can result in the risk of personal injury.
- Use a vacuum cleaner to remove dust from the filter. If the filter is very dirty, immerse it in warm water and rinse it a number of times. The water temperature should not be higher than 104°F (40°C). After washing, leave the filter to dry.



**CAUTION:** Do not operate the Dehumidifier without a filter. Dirt and lint will clog it and reduce performance.

END OF SEASON OPERATIONS

- Unplug the unit from the outlet, empty the Bucket and remove the drain cap.
- Run off all water left inside the appliance. When all the water has been drained, put the cap back in place.
- Clean the filter and dry it thoroughly before putting back.
- Cover the Dehumidifier with a plastic bag.
- Store the appliance upright in a dry, well-ventilated area, where the temperature will not fall 32°F (0°C).

START OF SEASON CHECKS

Make sure the power cable and plug are undamaged. Follow the installation instructions precisely.

Troubleshooting

PROBLEM	POSSIBLE CAUSES	SOLUTIONS
Dehumidifier does not start.	The Dehumidifier is unplugged.	Make sure the Dehumidifier’s plug is pushed completely into the outlet.
	The fuse is blown/circuit breaker is tripped.	Check the house fuse/circuit breaker box and replace the fuse or reset the circuit breaker.
	Dehumidifier has reached its present level or the Bucket is full.	Change to a lower setting; Empty the water Bucket and replace it properly.

## Troubleshooting

PROBLEM	POSSIBLE CAUSES	SOLUTIONS
Dehumidifier does not start.	Bucket is not in the proper position.	The Bucket must be in place and securely seated for the Dehumidifier to operate.
	Power failure.	There is a protective time delay (up to 3 min.) to prevent the compressor from overloading. For this reason, the unit may not start work immediately, but delay 3 min when power is resumed.
Dehumidifier does not dry the air as it should.	Not enough time allowed for unit to remove moisture.	When first installed, allow at least 24 hours to maintain the desired dryness.
	Airflow is restricted.	Make sure there are no curtains, blinds or furniture block the front or back of the Dehumidifier. See the CHOOSING A LOCATION section.
	Dirty filter.	Clean the filter. See the CLEANING THE FILTER section.
	The Humidity Control may not be set low enough.	For drier air, press the “Decrease” button to lower the percent humidity desired in the room, or set the Dehumidifier to continuous mode for maximum dehumidifying.
	Doors and windows may not be closed tightly.	Check that all doors, windows, and other openings are securely closed.
	Clothes dryer may be blowing moist air into the room.	Install the Dehumidifier away from the dryer. The dryer should be vented outside.
	Room temperature is too low.	Moisture removal is best at higher room temperatures. Lower room temperatures will reduce the moisture removal rate. This model is designed to operate at temperatures above 41°F (5°C).



## Troubleshooting

PROBLEM	POSSIBLE CAUSES	SOLUTIONS
Appliance runs too long	The area is too large	The capacity of the appliance can not meet the area of the room
	Doors and windows are open	Close the door and window
Frost appears on heat-exchanger	Appliance runs recently or the room temperature is too low	It is normal, frost usually disappear in 60 min
Fan noise	The air is passing through the appliance	This is normal
Water on the floor	The drain connection may be aging or loose	Check the drain connection and the appliance is placed level
	The drain pipe is connected, but the water is not drained	If use the bucket, remove the drain pipe and put back the drain cover; or install the drain pipe correctly

Occasionally, you may encounter some problems that are of a minor nature and a service call may not be necessary. Use this troubleshooting guide to identify possible problems you may be experiencing.

If the following error code appears, contact the after-sales service department for inspection and repair.

CODE	DESCRIPTION
EH	Humidity sensor failure
E2	Temperature sensor failure

Strictest operation environment: 41°F~90°F (5°C~32°C), 30%RH~90%RH.

## FCC Regulatory Conformance

This device complies with Part 15 of the FCC Rules. Operation is subject to the following two conditions:

- (1) This device may not cause harmful interference.
- (2) This device must accept any interference received, including interference that may cause undesired operation.

**NOTE:** This equipment has been tested and found to comply with the limits for a Class B digital device, pursuant to part 15 of the FCC Rules. These limits are designed to provide reasonable protection against harmful interference in a residential installation. This equipment generates uses and can radiate radio frequency energy and, if not installed and used in accordance with the instructions, may cause harmful interference to radio communications. However, there is no guarantee that interference will not occur in a particular installation. If this equipment does cause harmful interference to radio or television reception, which can be determined by turning the equipment off and on, the user is encouraged to try to correct the interference by one or more of the following measures:

- Reorient or relocate the receiving antenna.
- Increase the separation between the equipment and receiver.
- Connect the equipment into an outlet on a circuit different from that to which the receiver is connected.
- Consult the dealer or an experienced radio/TV technician for help

**WARNING:** Any changes or modifications not expressly approved by the party responsible for compliance could void the user's authority to operate the equipment.

### RF EXPOSURE

This equipment complies with FCC radiation exposure limits set forth for an uncontrolled environment. This equipment should be installed and operated with a minimum distance of 20 cm between the radiator and your body. This transmitter must not be co-located or operating in conjunction with any other antenna or transmitter.

## Warranty

---

hOmeLabs offers a limited one-year warranty ("warranty period") on all of our products purchased new and unused from hOmeLabs Technologies, LLC or an authorized reseller, with an original proof of purchase and where a defect has arisen, wholly or substantially, as a result of faulty manufacture, parts, or workmanship during the one-year warranty period. The warranty does not apply where damage is caused by other factors, including but without limitation to: (a) normal wear and tear; (b) abuse, mishandling, accident, or failure to follow operating instructions; (c) exposure to liquid or infiltration of foreign particles; (d) servicing or modifications of the product other than by hOmeLabs; (e) commercial or non-household use.

The hOmeLabs warranty covers all costs related to restoring the proven defective product through repair or replacement of any defective part and necessary labor so that it conforms to its original specifications. A replacement product may be provided instead of repairing a defective product. hOmeLabs's exclusive obligation under this warranty is limited to such repair or replacement.

## Warranty

---

A receipt indicating the purchase date is required for any claim, so please keep all receipts in a safe place. We recommend that you register your product on our website: [homelabs.com/reg](https://homelabs.com/reg). Although greatly appreciated, the product registration is not required to activate any warranty and product registration does not eliminate the need for the original proof of purchase. The warranty becomes void if attempts at repair are made by non-authorized third parties and/or if spare parts, other than those provided by hOmeLabs, are used. You may also arrange for service after the warranty expires at an additional cost.

These are our general terms for warranty service, but we always urge our customers to reach out to us with any issue, regardless of warranty terms. If you have an issue with a hOmeLabs product, please contact Customer Service at [homelabs.com/help](https://homelabs.com/help) or [help@homelabs.com](mailto:help@homelabs.com).

This warranty gives you specific legal rights, and you may have other legal rights which vary from state to state, country to country, or province to province. The customer may assert any such rights at their sole discretion.

## Manufacturing Info

---

This manual is to be used with all items with the model number

HME0088

HME0089

Rated voltage/Frequency: 115 V~, 60 Hz;  
Operating condition: 41–90°F / 30–90% RH

**WARNING: Keep all plastic bags away from children.**

Manufacturer, distributor, importer and seller are not liable for ANY damage caused by improper use, storage, care or failure to follow warnings associated with this product.

## Contact Us

---

 CHAT WITH US

[homelabs.com/help](https://homelabs.com/help)

 EMAIL US

[help@homelabs.com](mailto:help@homelabs.com)



## For Household Use Only

**Distributed by hOmeLabs™, LLC**  
350 Springfield Avenue, Suite #200,  
Summit, NJ 07901

[help@homelabs.com](mailto:help@homelabs.com)  
[homelabs.com/help](http://homelabs.com/help)

All rights reserved, hOmeLabs™.  
Made in China.