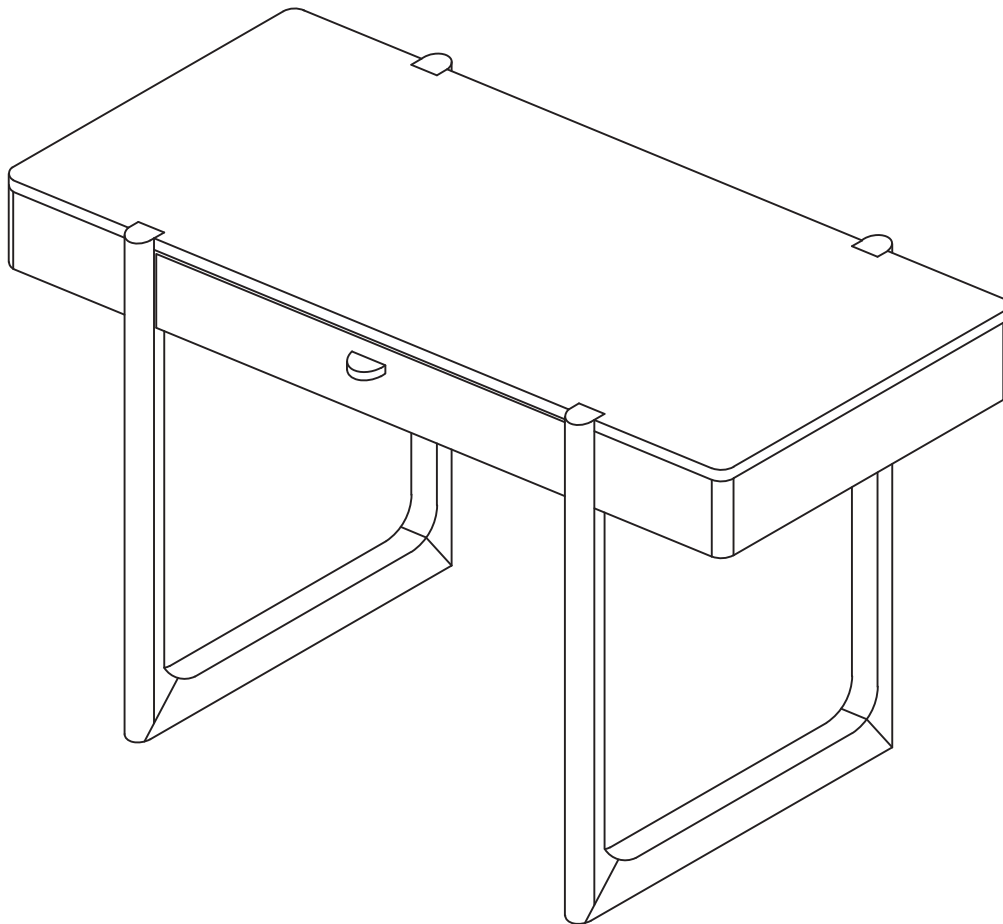


Let's build the

Haley Desk

SKU 51901



Scan me!

Free Lifetime
Warranty

nathan james

25-0530-VN

Ok, let's get rolling

This should be easy, just follow our instructions and you will be back to Netflix in no time.

Estimated time for assembly

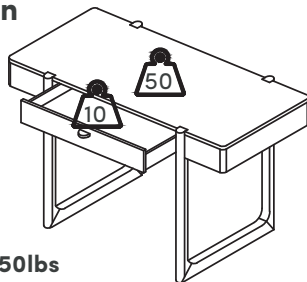


75:00

What you need

- Phillips-head screwdriver
- 5 /16" Drill Bit OR 1 /4" Drill Bit
- Drill
- Some of your favourite bubbly or your preferred relaxant
- Use the packaging carton as a working surface to prevent product damage during assembly

Weight Limitation



Top Max. Capacity: 50lbs
Drawer Max. Capacity: 10lbs

Toll-free at 1-866-619-1004
Help@nathanjames.com
Nathanjames.com/help

What's included

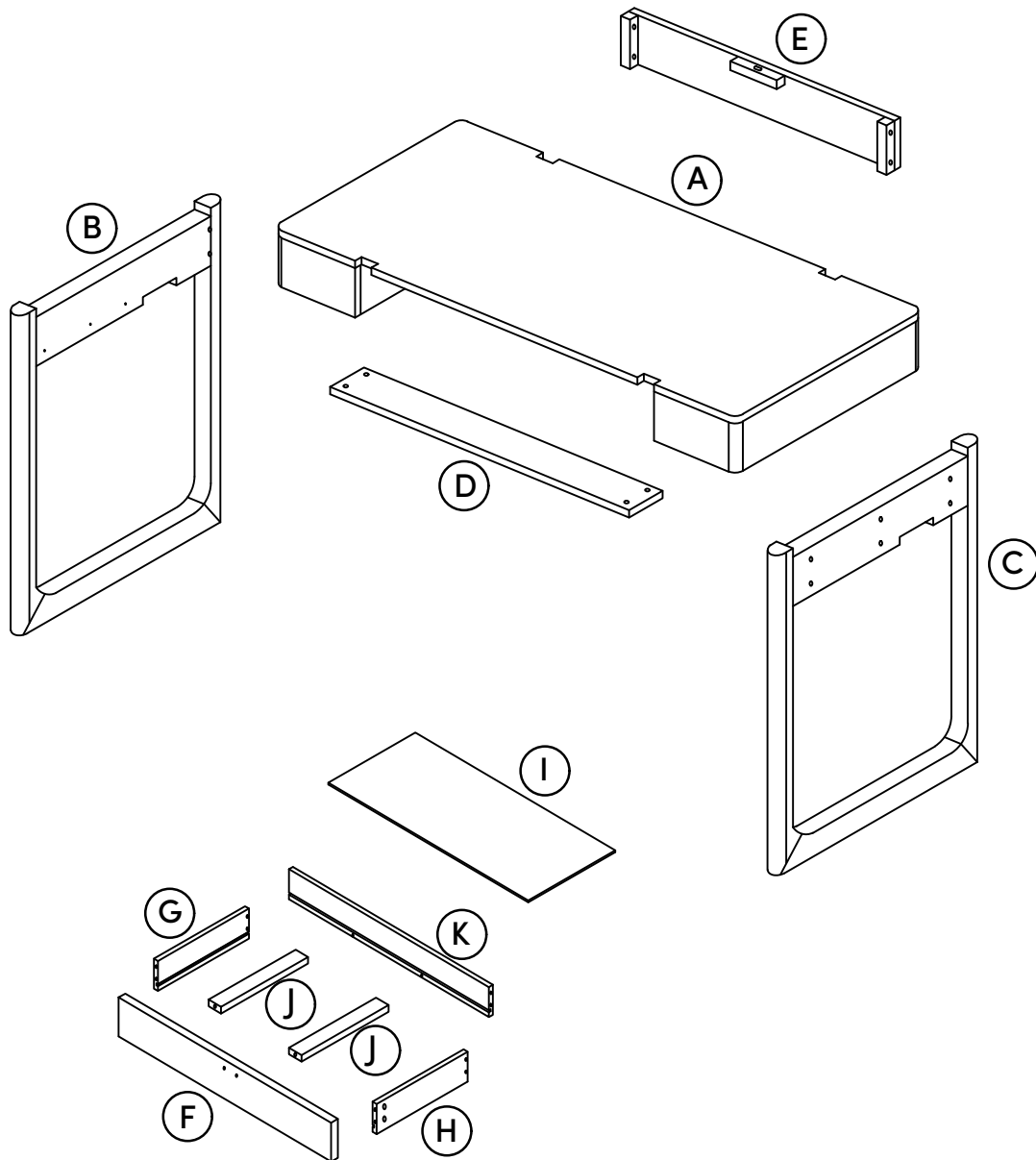
Description	Qty
A Top Panel	1
B Left Side Panel	1
C Right Side Panel	1
D Connecting Support Panel	1
E Back Panel	1
F Drawer Front	1
G Drawer Left Side	1
H Drawer Right Side	1
I Drawer Bottom	1
J Drawer Bottom Stretcher	1
K Drawer Back	1

Scan me!

Free Lifetime
Warranty



The goods



IMPORTANT

1. Do not tighten bolts / screws completely until all bolts / screws are lined up and inserted into holes.
2. Do not over tighten screws and bolts to avoid stripping.
3. Please use hand tools to assemble this product.

What's included

	Description	Qty
1	Ø1/4" x 35mm Hex Button Head Bolt	21
2	Ø1/4" x 10mm Spring Washer	21
3	Ø1/4" x 16mm Flat Washer	21
4	Allen Key	1
5	Cam Bolt	8
6	Cam Lock	8
7	M4 x 30mm Screw	4
8	Left Side Panel Slide (CL)	1
8	Right Side Panel Slide (CR)	1
8	Right Side Drawer Slide (DR)	1
8	Left Side Drawer Slide (DL)	1
9	M3 x 12mm Screw	12
10	Ø5/32" x 22mm Bolt	2
11	Wood Handle	1
12	Leveler (Extra)	2
13	Plastic Bracket (for Anti-Tip)	2
14	Non-Drywall Anchor (for Anti-Tip)	2

	Description	Qty
15	M3.5 x 15mm Screw (For Non-Drywall Anti-Tip)	2
16	Plastic Telher (for Anti-Tip)	1
17	M4 x 50mm Screw (for Drywall Anti-Tip)	2
18	Drywall Anchor (for Anti-Tip)	2

The goods

1



2



3



4



5



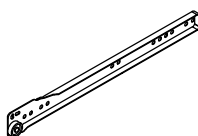
6



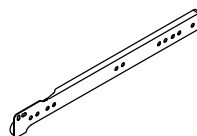
7



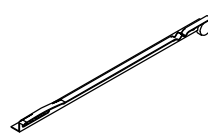
8 (CL)



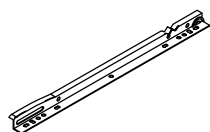
8 (CR)



8 (DR)



8 (DL)



9



10



11



12



13



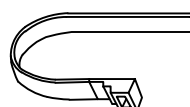
14



15



16



17



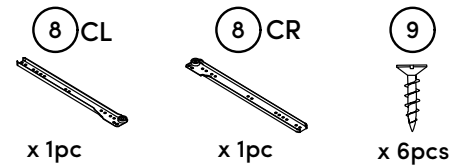
18



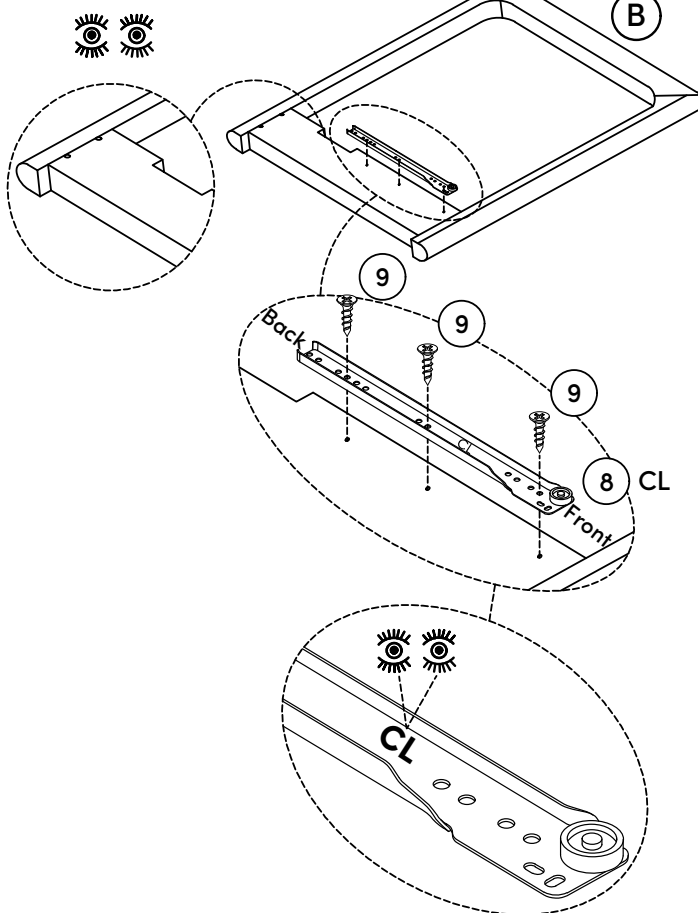
Step 1

Lay down packaging or carpet as a working surface and let's get started!

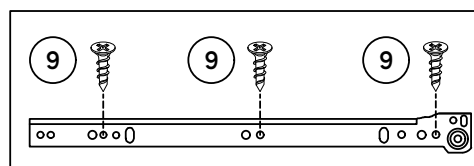
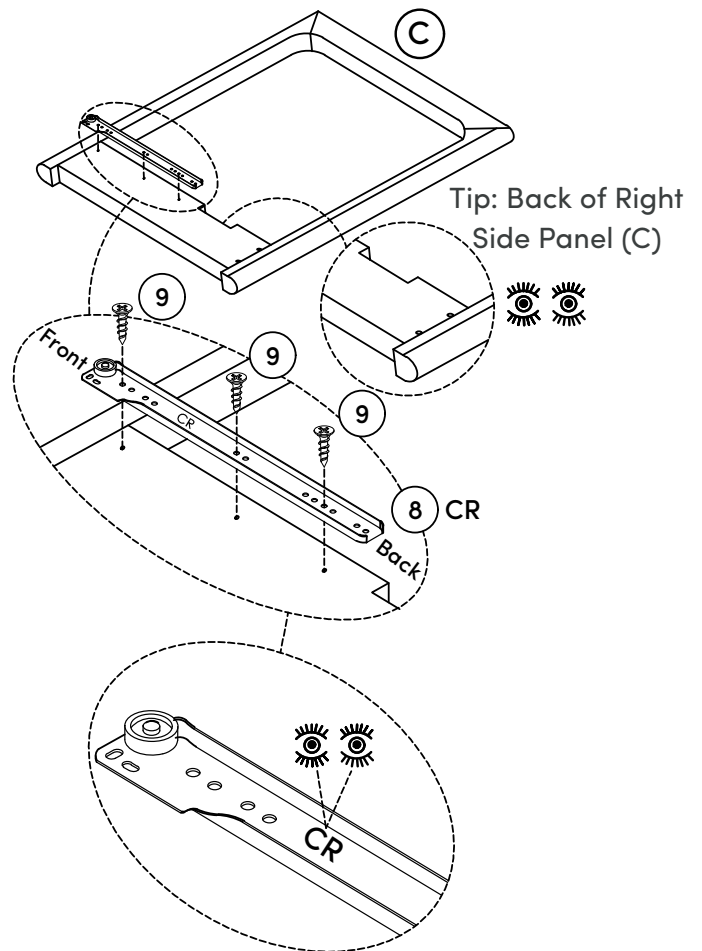
Attach the Left Side Panel Slide (8CL) onto the Left Side Panel (B), and the Right Side Panel Slide (8CR) onto the Right Side Panel (C). Finally, use the Screws (9) to secure it in place.



Tip: Back of Left Side Panel (B)



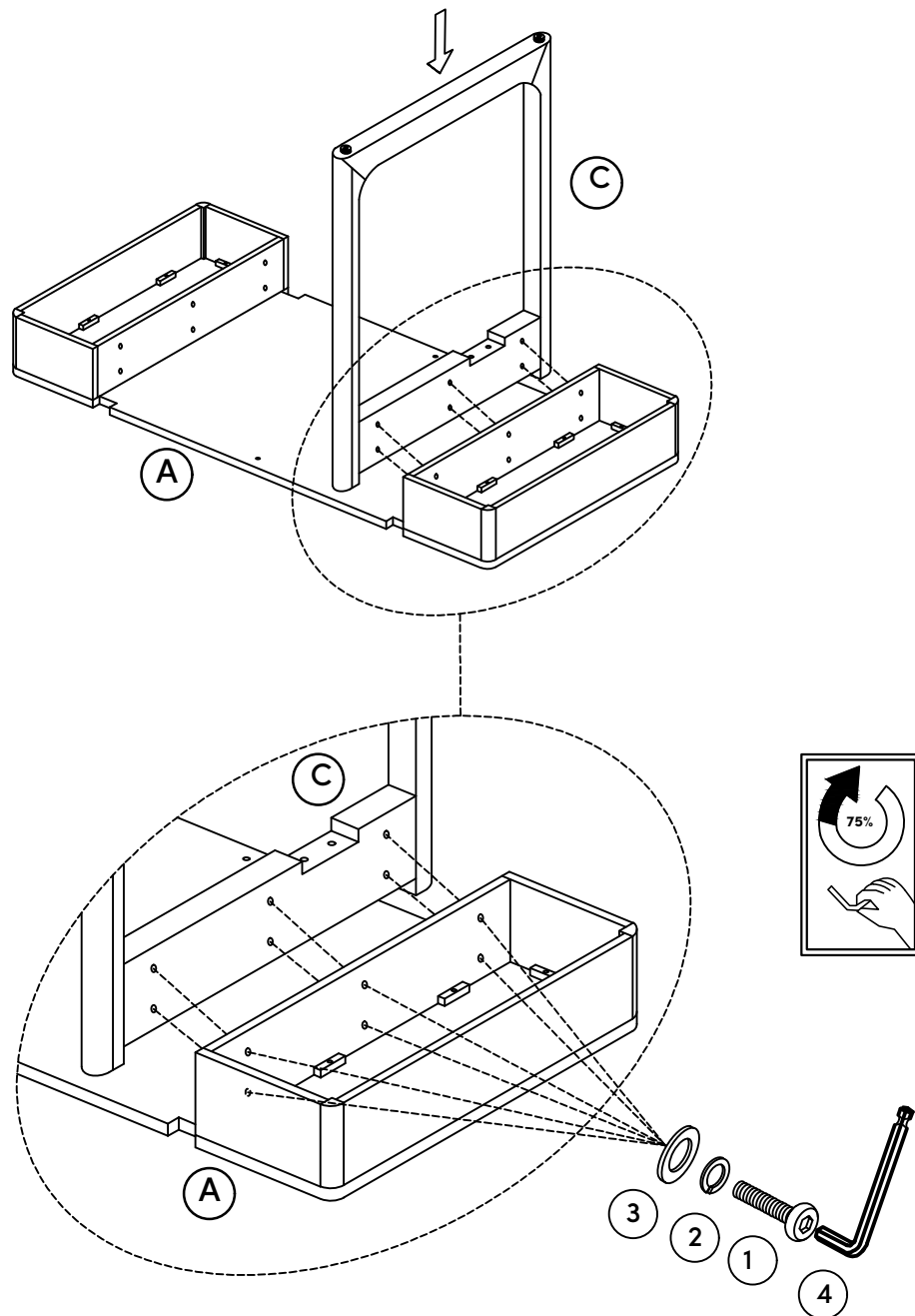
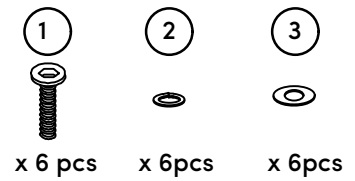
Tip: Back of Right Side Panel (C)



Step 2

Attach the Right Side Panel (C) onto the Top Panel (A). Slide the Spring Washer (2) and the Flat Washer (3) onto the Bolts (1). Use these parts and the Allen Key (4) to secure the Right Side Panel (C) with the Top Panel (A).

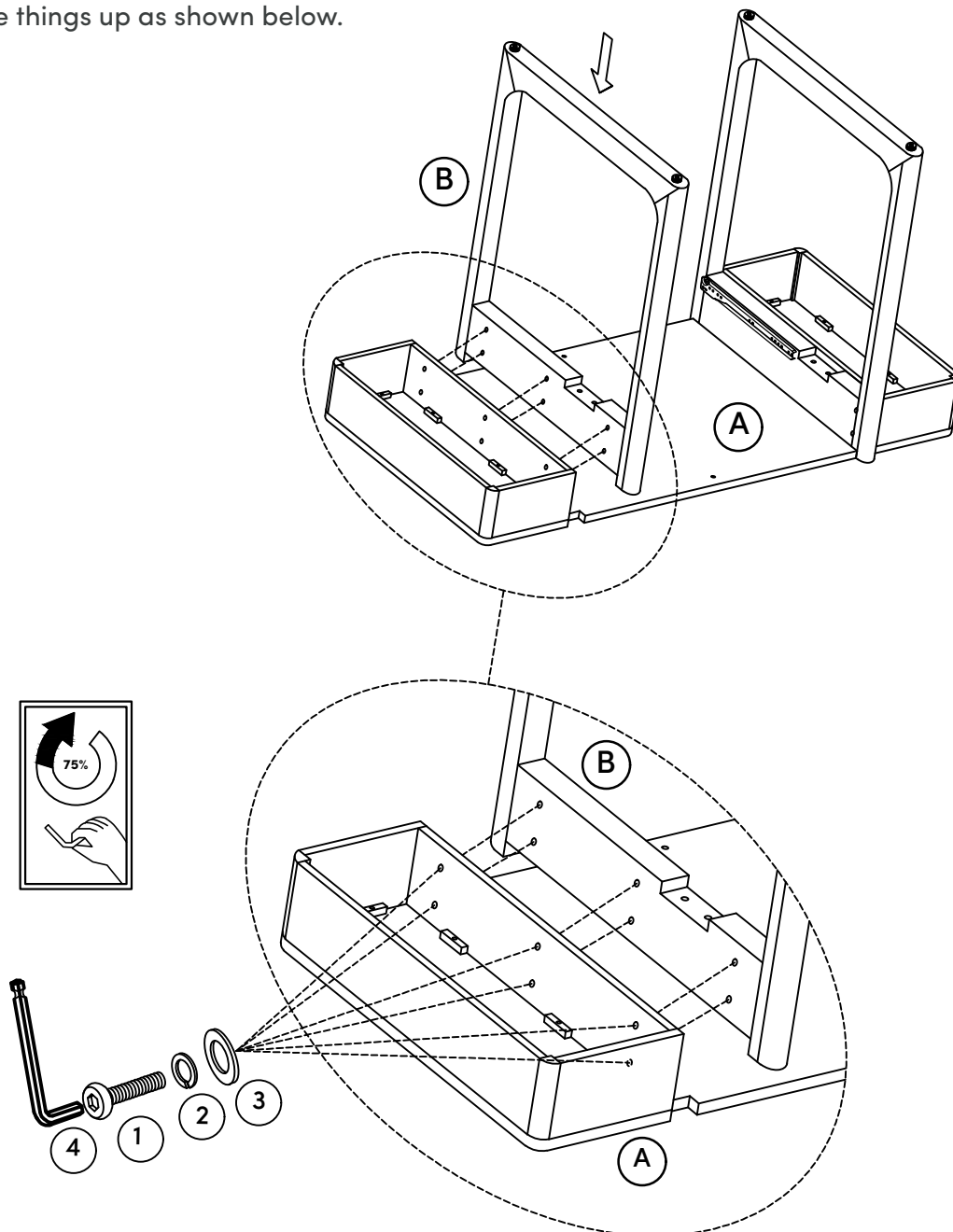
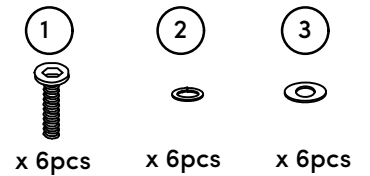
Make sure to line things up as shown below.



Step 3

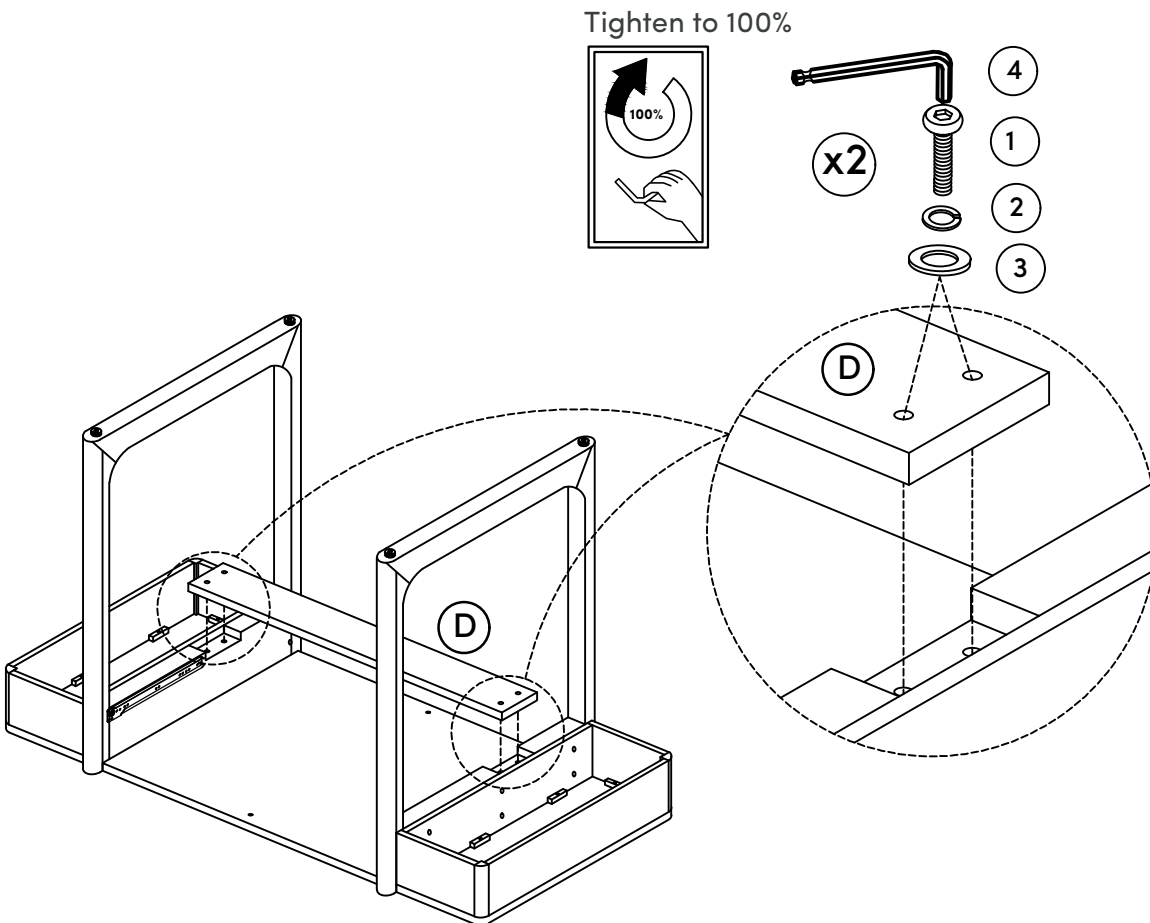
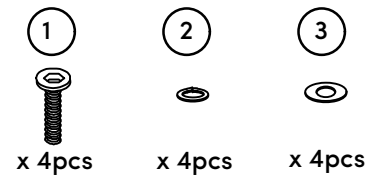
Now attach the Left Side Panel (B) onto the Top Panel (A). Slide the Spring Washer (2) and the Flat Washer (3) onto the Bolts (1). Use these parts and the Allen Key (4) to secure the Left Side Panel (B) with the Top Panel (A).

Make sure to line things up as shown below.



Step 4

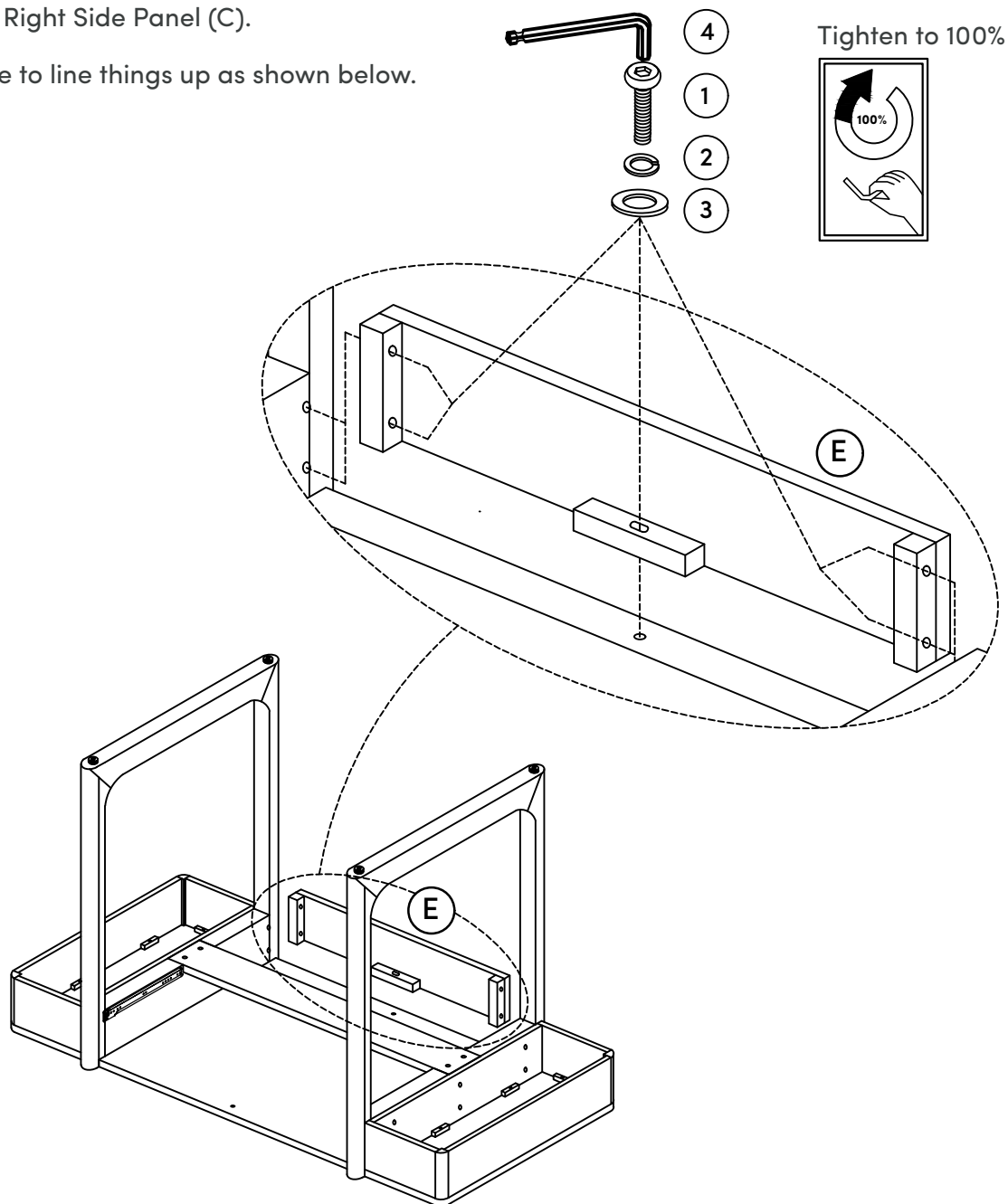
Insert the Connecting Support Panel (D) into place, connecting the Left Side Panel (B) and Right Side Panel (C). Make sure to line things up as shown below. Finally, slide the Spring Washer (2) and the Flat Washer (3) onto the Bolts (1). Use these parts and the Allen Key (4) to secure the Connecting Support Panel (D) in place.



Step 5

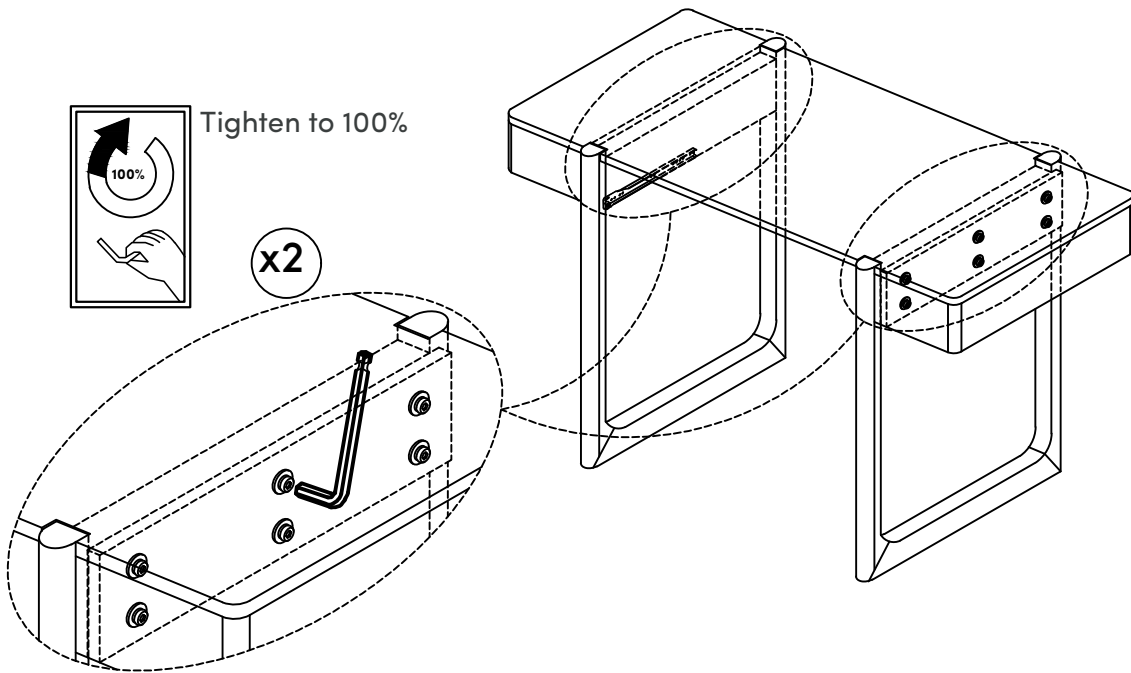
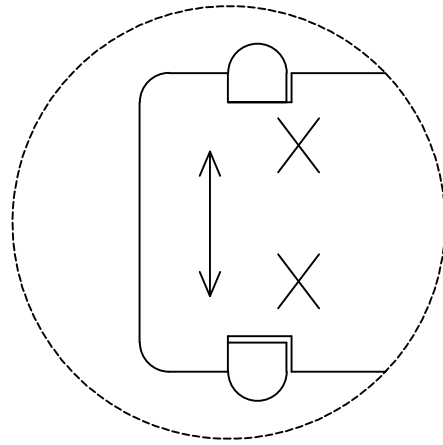
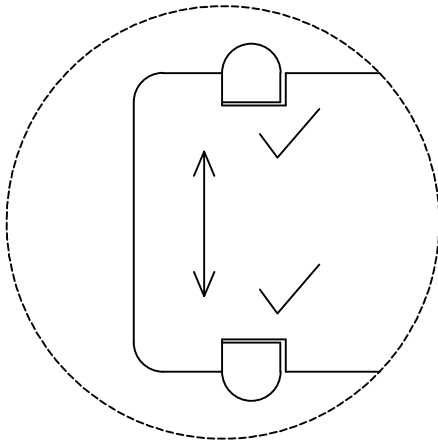
Now attach the Back Panel (E) onto the Top Panel (A). Slide the Spring Washer (2) and the Flat Washer (3) onto the Bolts (1). Use these parts and the Allen Key (4) to secure the Back Panel (E) to the Top Panel (A) and the Left Side Panel (B) to the Right Side Panel (C).

Make sure to line things up as shown below.



Step 6

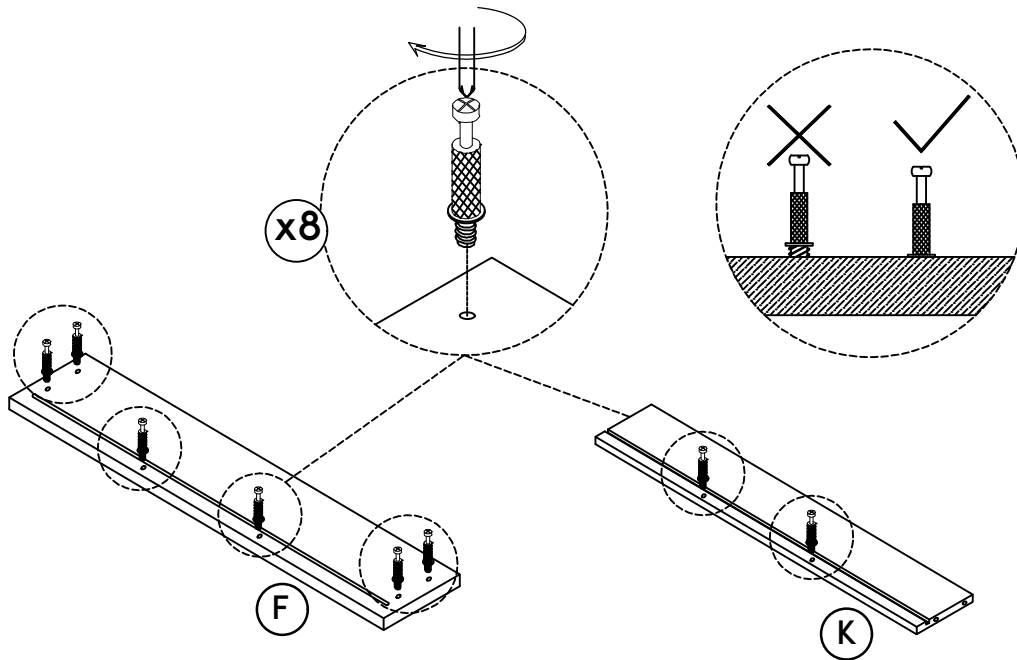
Move the leg frames forward or backward, and tighten the screws when the gaps between the top of both legs and the desktop are the same.



Step 7

Let's get started on the drawer!

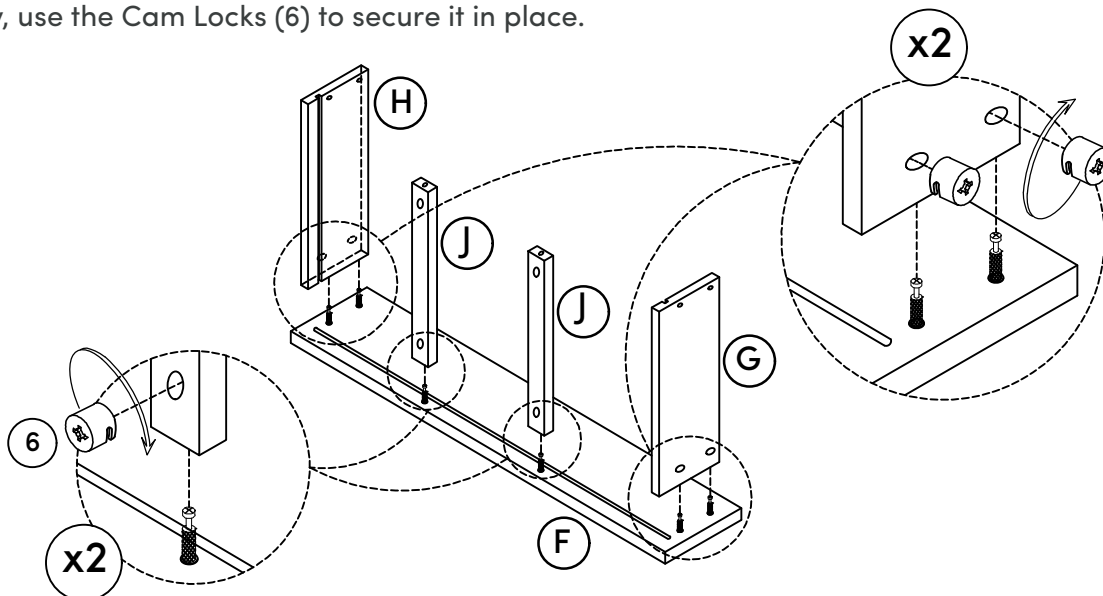
Begin by securing the Cam Bolts (5) onto the Drawer Front (F) and Drawer Back (K).



Step 8

Continue by placing the Drawer Right Side (H) and Drawer Left Side (G) onto the Drawer Front (F). Next, place the Drawer Bottom Stretcher (J) onto the Drawer Front (F).

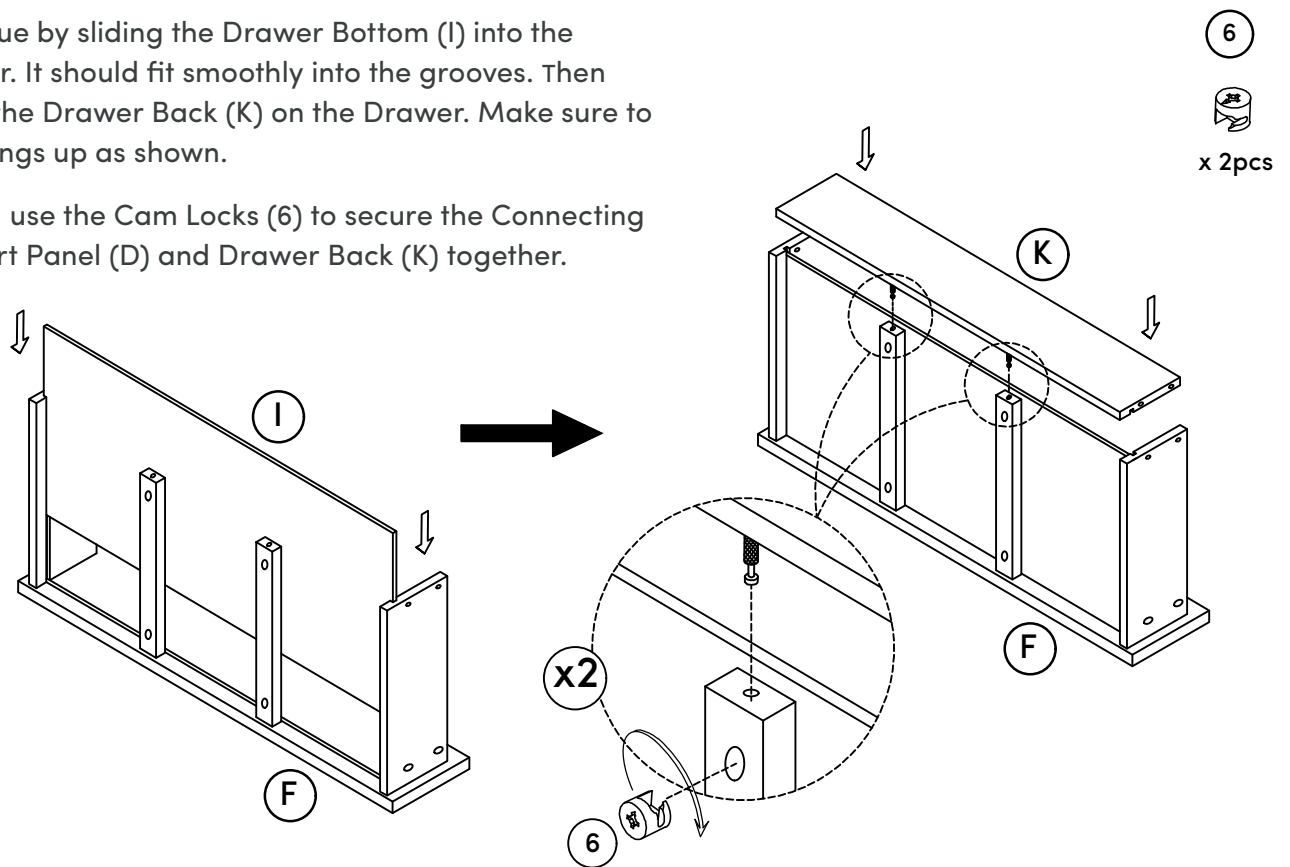
Finally, use the Cam Locks (6) to secure it in place.



Step 9

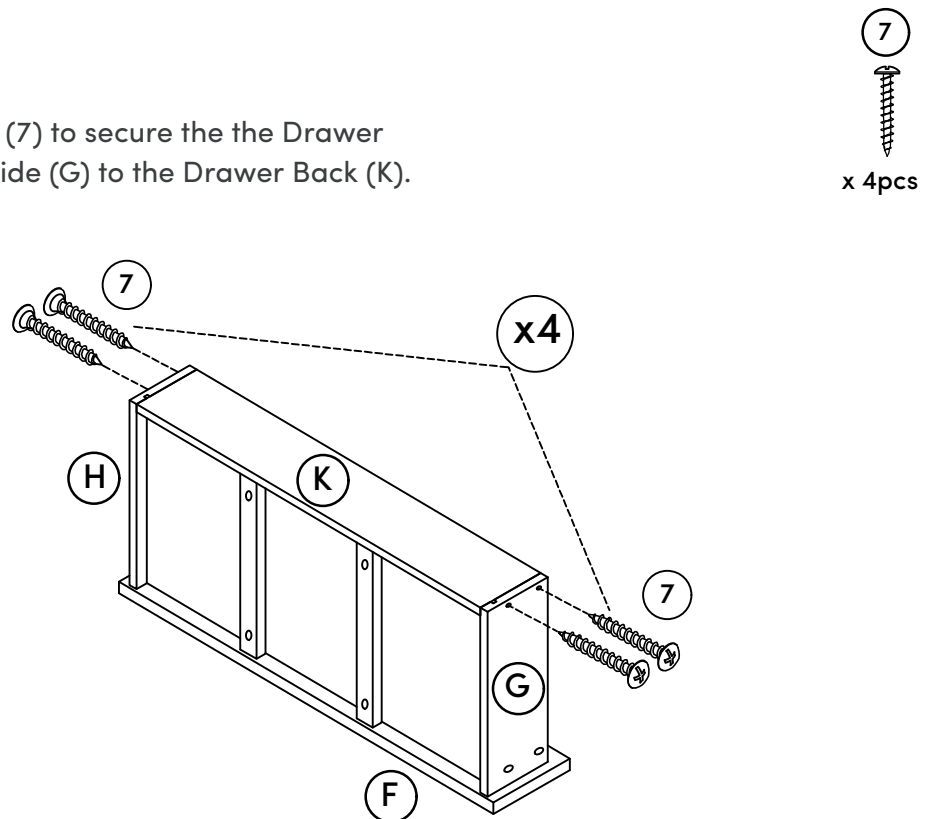
Continue by sliding the Drawer Bottom (I) into the Drawer. It should fit smoothly into the grooves. Then place the Drawer Back (K) on the Drawer. Make sure to line things up as shown.

Finally, use the Cam Locks (6) to secure the Connecting Support Panel (D) and Drawer Back (K) together.



Step 10

Now use the M4 x 30mm Screws (7) to secure the the Drawer Right Side (H) and Drawer Left Side (G) to the Drawer Back (K).



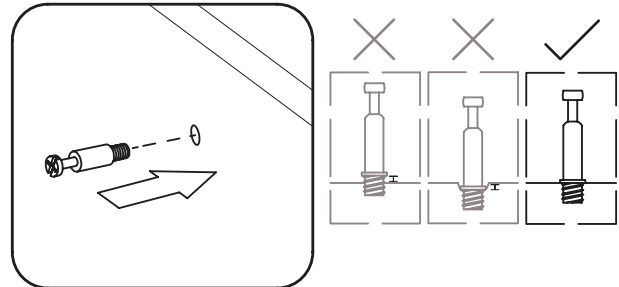
How to use cam locks

Did you know?

Cam locks are used to join two panels together, usually the edge of one to the flat side of another.

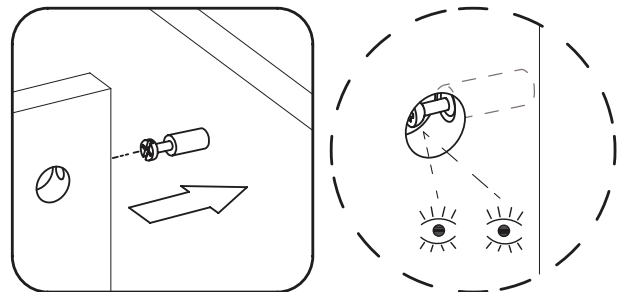
First, your cam bolt (or cam pin) will need to be properly inserted into the flat side of the board.

Important Note: Only tighten the cam bolt until it is secure. Do not over-tighten.



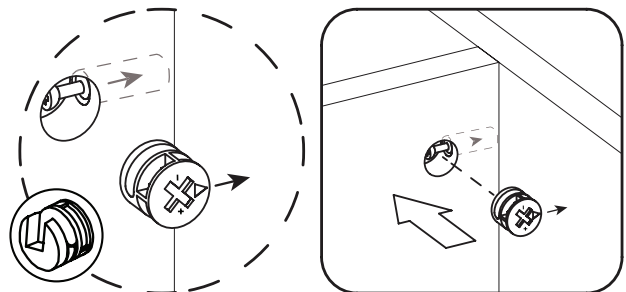
Next, you will fit the proper hole on the edge of the associated joining panel over the cam bolt.

Important Note: When installed properly, the head of the cam bolt will be visible through the larger hole on the side of the joining panel.



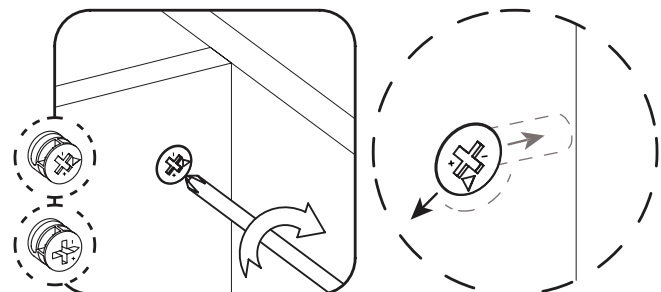
Next, you will notice the cam lock has a “C” shaped back. Commonly, an arrow on the front of the cam lock points in the same direction as the open section on back.

Using these as your cue, insert the cam lock into the large hole so the opening of the “C” fits over the head of the cam bolt.



Using a screwdriver, you will turn the cam lock until it stops, usually between 130° or 180°. You will feel the panels pulling closer until they are secured.

Important Note: Only turn the cam lock until the panels are fully engaged & feel secure. Turning too far may lead to hardware failure



Still having issues?

If a cam lock seems to be spinning in place or is not “catching” or pulling the panels together as expected, first remove the cam lock & try again while making sure that everything is properly positioned & oriented.

If you are still having issues getting things work ing as expected, first remove the cam lock then unscrew the cam bolt slightly (less than 1 complete turn) to see if that helps with the alignment of the cam lock & bolt.

Step 11

Finally, attach the Wood Handle (11) to the Drawer Front (F) and secure it in place using the $\varnothing 5/32'' \times 22\text{mm}$ Bolts (10).

10

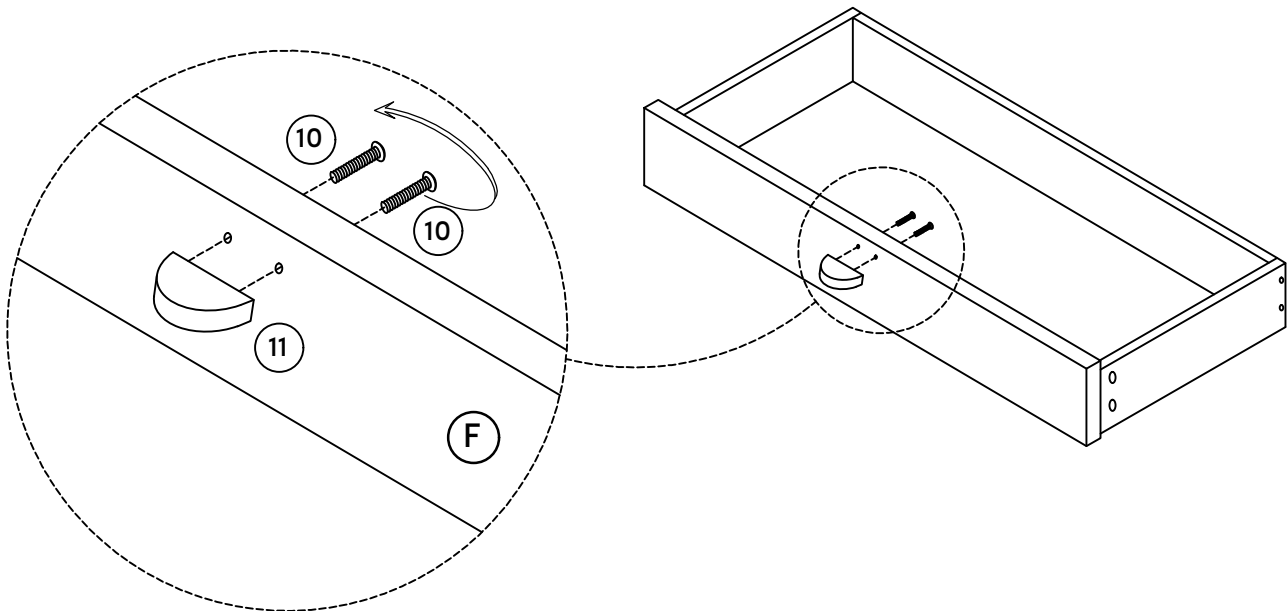


x 2pcs

11



x 1pc



Step 12

Time to work on securing the drawer slides.

Place the Left Side Drawer Slide (8DL) on the Drawer Left Side (G) and the Right Side Drawer Slide (8DR) on the Drawer Right Side (H). Make sure to line things up as shown below. Finally, use the M3 x 12mm Screws (9) to secure everything in.

8 DL



x1pc

8 DR

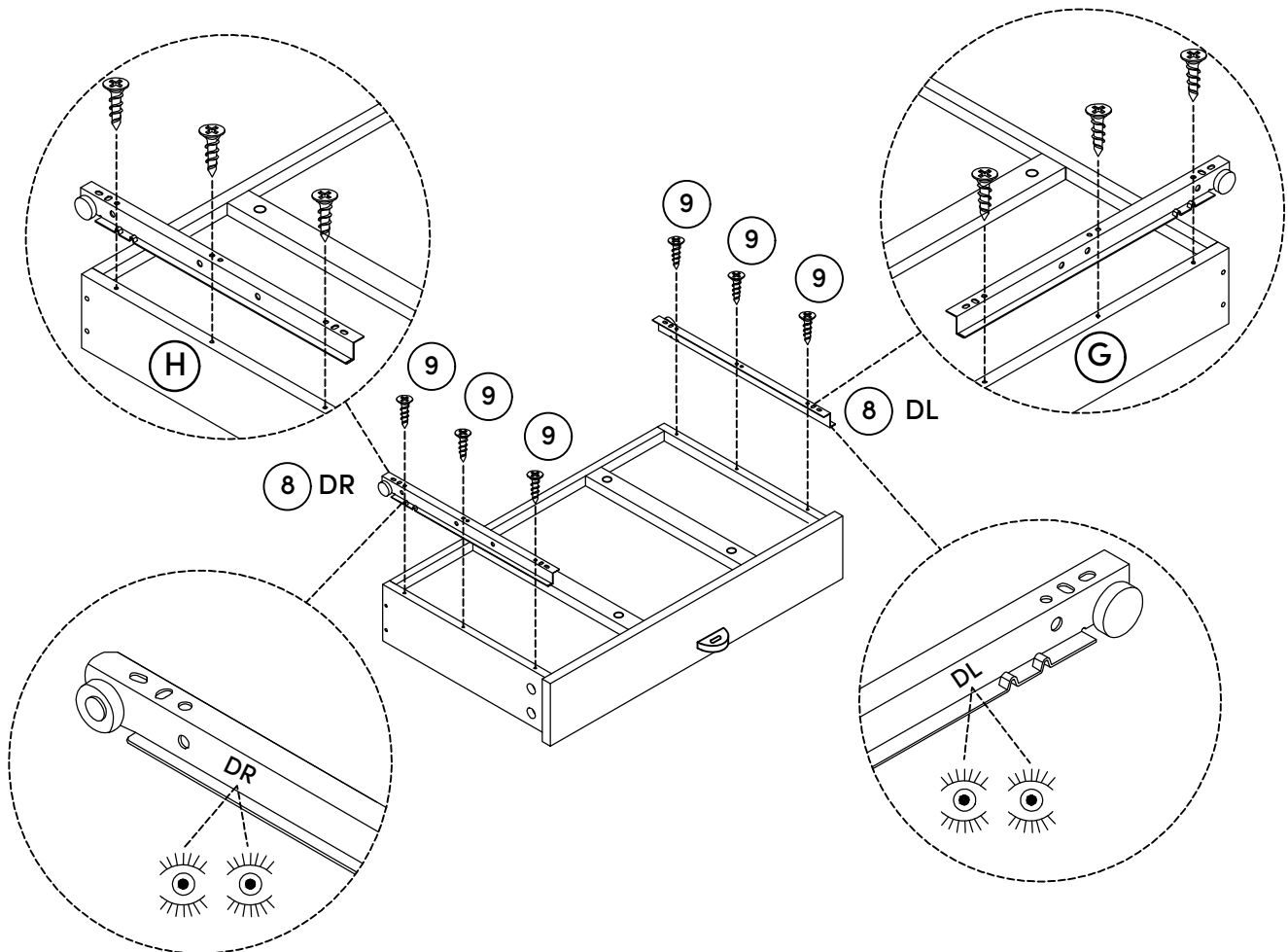


x1pc

9

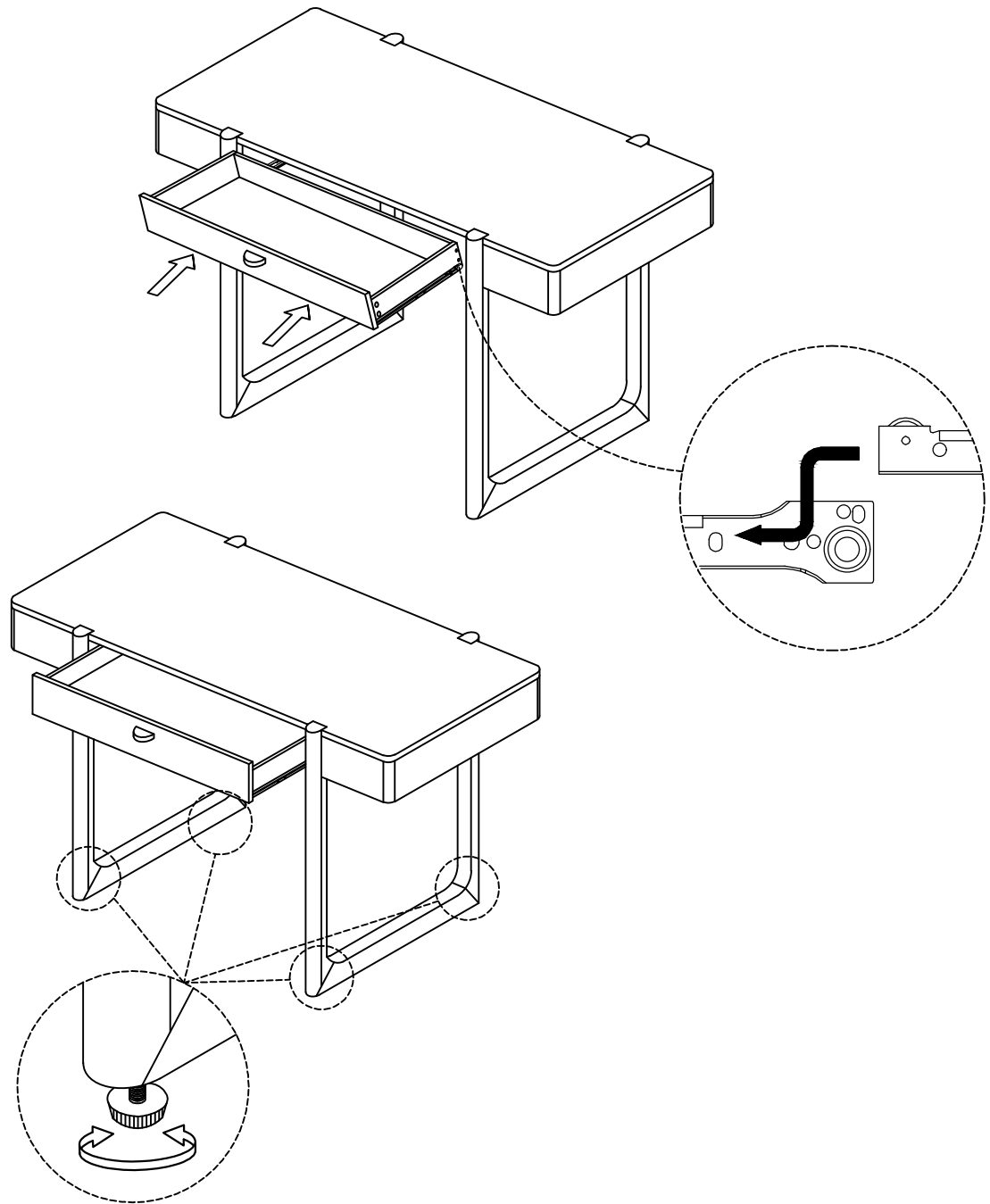


x 6pcs



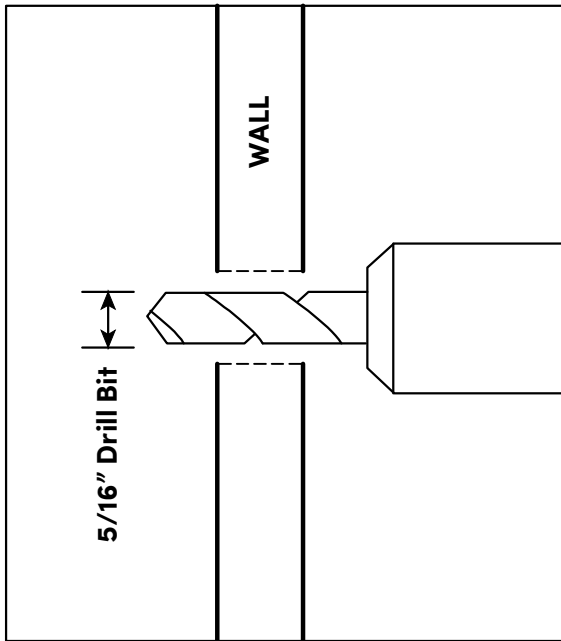
Step 13

Insert the drawer into the Desk

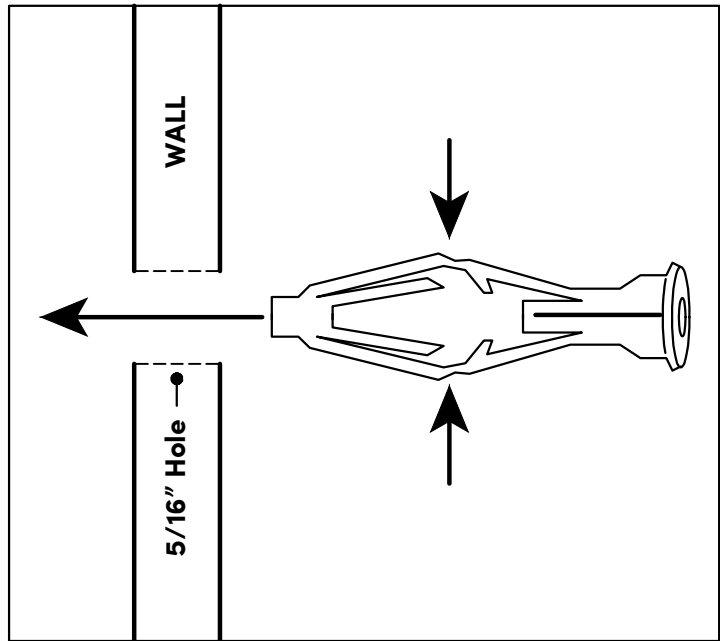


Wobbly or unlevel?
Adjust feet until stable.

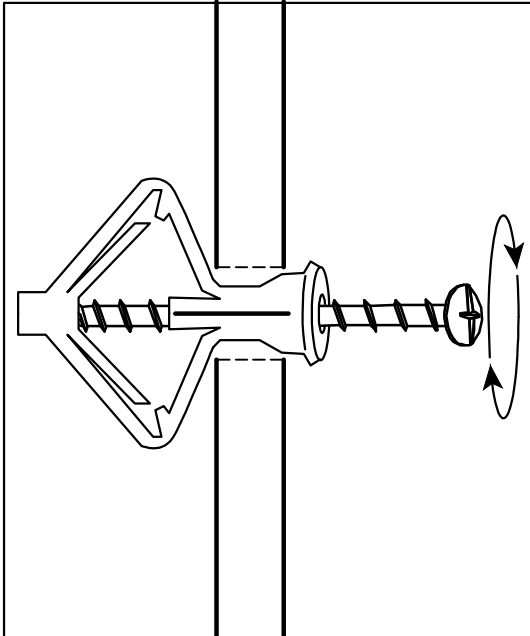
How to Use Drywall Anchors



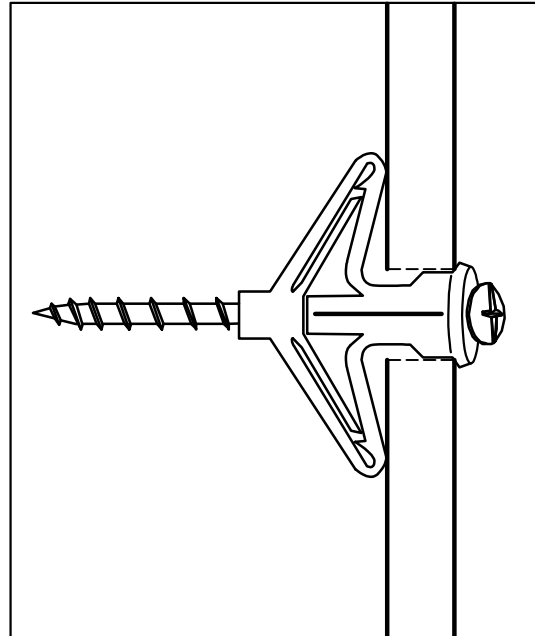
1. Drill hole 5/16 bit.



2. Pinch and insert.



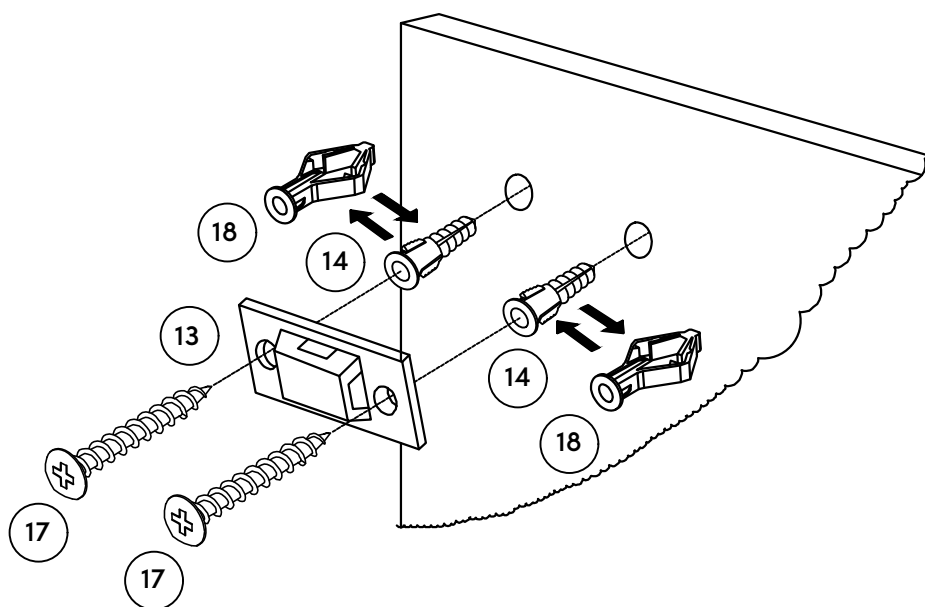
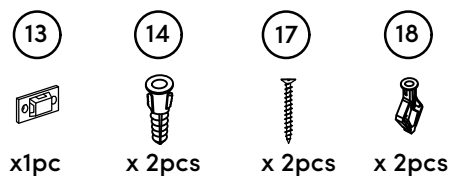
3. Begin tightening.



4. Anchor is secure when screw is tightened to 100%.

Step 15

Safety first! Let's get this desk unit secured to the wall. Find where you want this desk unit to live and then mount the Plastic Bracket (13) to the wall using the provided Wall Anchors (14) or (18) and M4*50mm Screws (17). We recommend using a 1/4" and a 5/16" drill bit.



IMPORTANT NOTE:

Non-Drywall Anchor (14) requires a 1/4" Drill Bit.

Drywall Anchor (18) requires a 5/16" Drill Bit.

Step 15

13



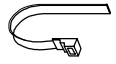
x 1pc

15

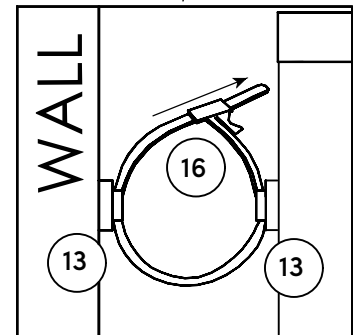
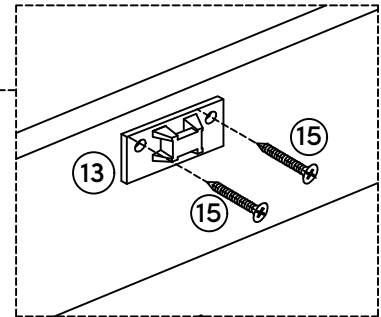
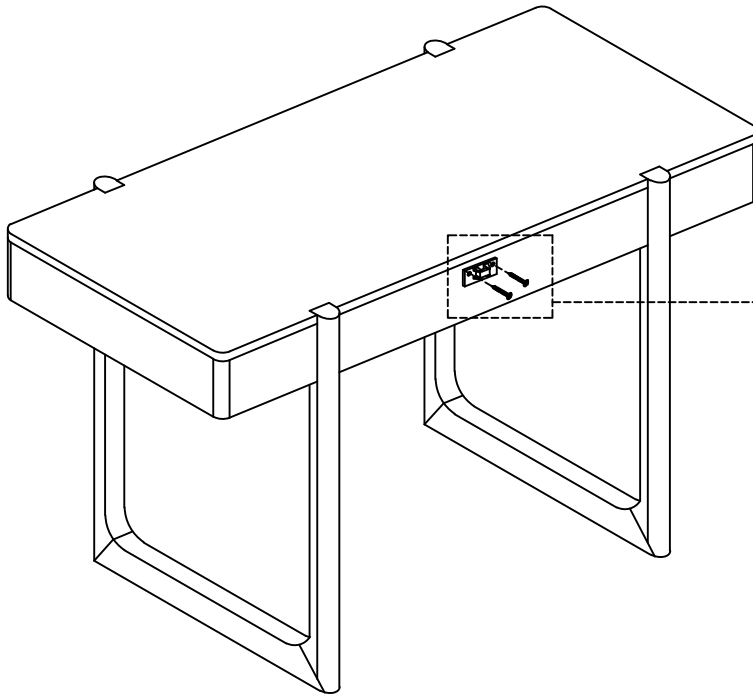


x 2pcs

16



x 1pc



IMPORTANT NOTE:

Young children (and/or pets) can be seriously injured by tipping furniture units. You must install the provided anti-tip kit hardware solution, as instructed, to prevent the furniture units) from tipping over - which could possibly lead to injuries or damage. The provided anti-tip kit hardware solution is intended only as an additional safety measure & deterrent; it is not a substitute for proper adult supervision. The provided anti-tip kit hardware solution is not an earthquake restraint. If you wish to add the extra security of earthquake restraints, they must be purchased & installed separately.

No heartburn, when we handle the return

Give us a call **1-866-619-1004** or shoot us a message at **help@nathanjames.com** we will issue you a free replacement with **zero hassle**.

Our way



Give us a call



Replacement



You

Their way



Re-package item



Schedule pick up



Track package



Replacement



You

We really don't want you to go through the hassle of re-packaging your item and sending it back, because let's be honest...nobody has time for that.

Safety first, fun later

We want your product to last as long as possible, so we recommend that you tighten the screws 2 weeks after assembly and for added safety check the tightness of all screws every 2 months.

For proper care and treatment of wood and metal please check our website at NathanJames.com/products

Safe use of this product starts with you.

Use this product responsibly with the primary concern for your safety. Follow assembly instructions carefully and inspect product upon receipt and each use.

Nathan James and its parent companies cannot be held legally responsible for any injuries or death resulted from failure to follow instructions or improper use of this product.

Do not modify the structure of this product in any way.

Our products have been tested to meet specific safety measures as they were originally intended to be sold. Any modifications will present the risk of creating significant safety issues which NJ will not be responsible for.

Proper use

DO NOT	use for commercial purposes
DO NOT	frilic on desk
DO NOT	stand on desk
DO NOT	leave spilled liquid on desk
DO NOT	use if desk is damaged or broken
DO NOT	make temporary repairs
DO NOT	use outdoors

We are only in business if you're happy

For starters, thanks for being you.

☎ Toll-free at 1-866-619-1004

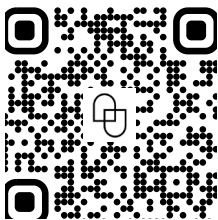
✉ Help@nathanjames.com

🌐 NathanJames.com/help

We do our best to ensure your furniture arrives without any problems, but occasionally mistakes happen—as humans we are imperfect beings. In the event that a part is damaged or missing, we will be more than happy to provide you with replacement part(s) for free.

Warranty

This product comes with a lifetime warranty from the date of purchase. Please use your phone to scan the QR code to register your product or visit <https://goo.gl/i9dk3q>



Did we do alright? Please spread the love!

If you are happy with your product, tell your friends and family about us or even better leave us a review online. Spreading the word gives us the opportunity to make more people happy and keep our prices low for your next purchase.

Brooke Burdon

Founder, Nathan James