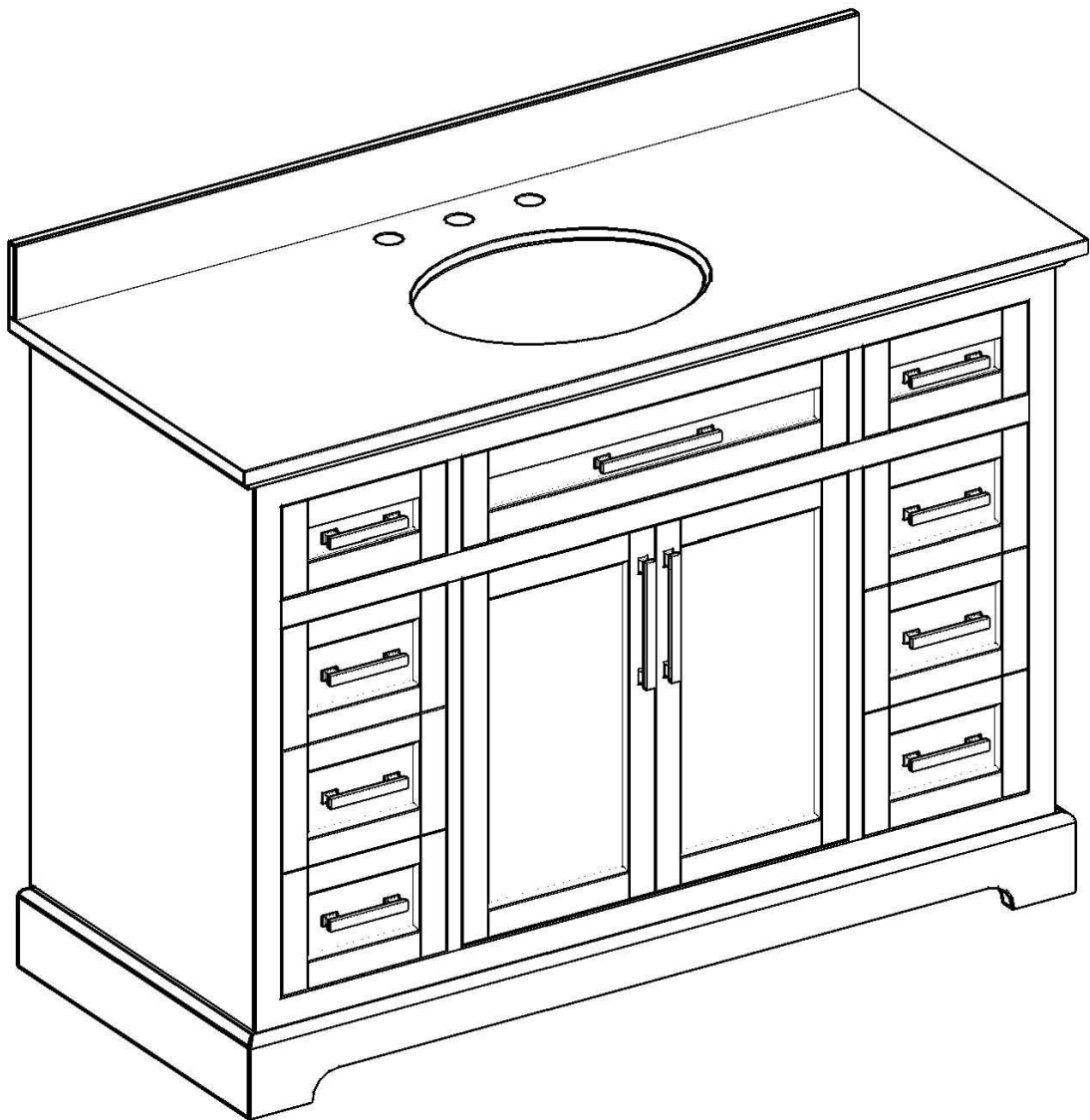


# USER'S MANUAL

## WASHINGTON SERIES

### 48" BATHROOM VANITIES WITH TOPS



## SAFETY PRECAUTIONS

- ★ Thank you for choosing us. We appreciate the trust and confidence you have placed in us and are committed to providing you the best possible product.  
As with all none pre-install products, please follow instructions closely and handle with care.
- ★ Tools, hardware, and all other pipeline components like water faucet, drainpipe, silicone pads, etc. are NOT included.
- ★ Make sure you have checked all packing materials carefully for parts that may have come loose inside the package in the course of transit. If there are any missing parts, please contact Customer Service for assistance.

## WARNING

- Base cabinet supports a MAXIMUM weight of 350 lbs. Exceeding the maximum weight limit will compromise the integrity of the cabinet structure and could cause the cabinet to fail.
- Two adults carry and place.
- Keep small parts away from children during assembly.
- Do not stand, step, or climb on unit.
- Ensure the vanity is installed on a level floor. Unevenness can cause the vanity to become misaligned, resulting in twisting of the cabinet. Adjust the height with the shims for any unevenness.
- DO NOT use harsh bathroom cleaners or grout cleaners on any natural stone.
- Ensure all building & plumbing codes are respected. Professional installation is recommended.

## CAUTION & CLEANING & MAINTENANCE

- Do not hang the cabinet on the wall.
- USE preventative cleaning measures to keep your stone pristine.
- USE sealers according to the product-specific directions.
- Blot spills quickly, follow up by cleaning the stone with a mild non-abrasive soap and water.
- Stone countertops (Granite, Marble, etc.) are surprisingly resilient to stains and scratches. Any spills on the stone surfaces should be wiped up within a reasonable amount of time. Do Not let the liquid sit on the stone overnight. Stones are most prone to staining by oil and acid, so be sure to blot these spills as soon as they happen. In bathrooms specifically, stone tends to attract soap scum, just like man-made tile. Rinse the vanity top with clean, hot water frequently.
- Vanity: To clean the surface of doors or cabinets, use non-abrasive cleaners and or cleaning agents that do not contain solvents.
- Vanity Top: Your vanity top will remain in its original state if you maintain and clean it properly. Clean the surface with a glass cleaner or other household cleaners that are non-abrasive. Remove oil-based stains with acetone, mineral spirits, or ammonia. Organic stains like coffee, tea, or juice can be removed with hydrogen peroxide, mixed with a few drops of ammonia.
- Place protective pads on the bottoms of any heavy objects, such as pottery, appliances, or other objects that may scratch the marble surface.
- Avoid abrasive cleaners or rough cleaning pads. If necessary, you can use a soft buffing pad.



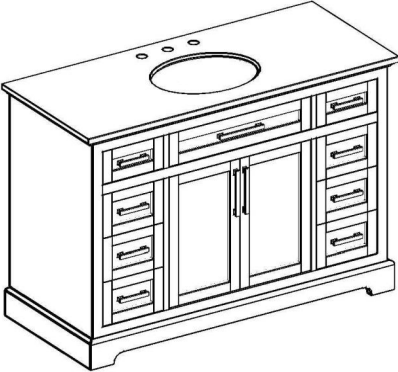

**MAX WEIGHT CAPACITY: 350LBS**

**DO NOT STAND, STEP, OR CLIMB ON UNIT.**

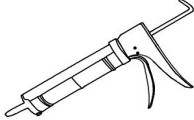
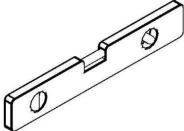


# Parts List & Assembly Instruction

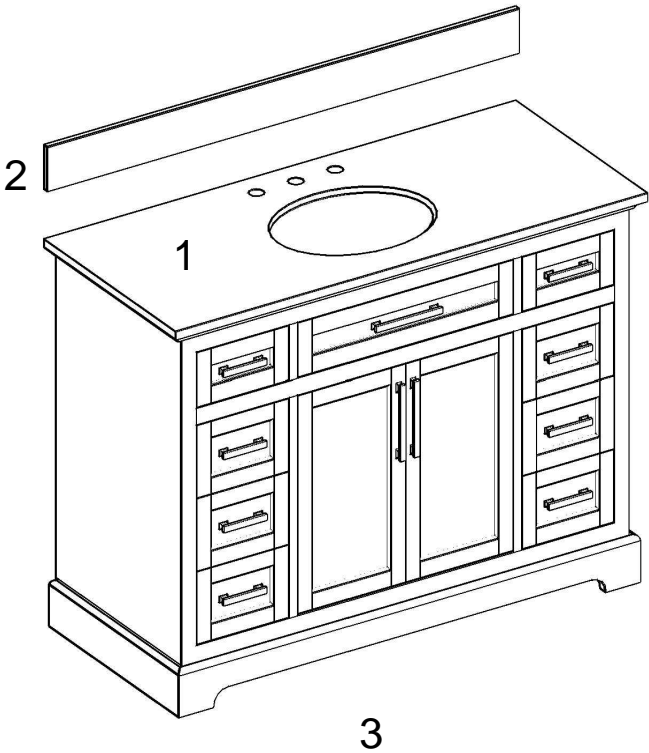
- 1. Make sure all parts are in the package.
- 2. "+" in below list indicates that additional pieces are replacement parts.
- 3. Do not fully tighten anything until all screws, nuts, washers and bolts are in place.

## Parts List

(1) x1pc	(2) x1pc
	

## Hardware & Tool List

Glass glue&glue gun Not included	Level Not included	Safety goggles Not included	Clean rag Not included
			



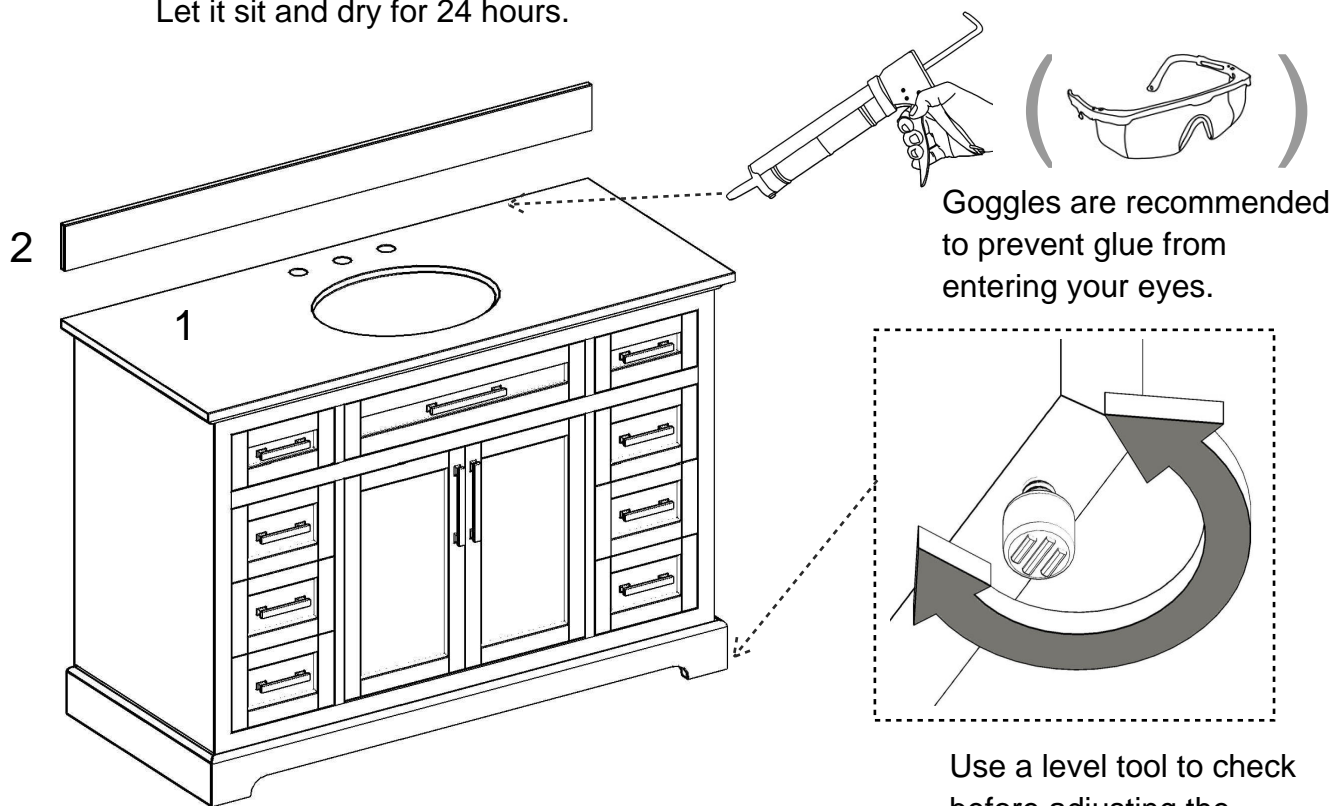
## Step1 Install the backsplash

Set unpolished bottom edge of backsplash on the vanity countertop.

Press gently against wall and down on the top.

Remove any excess sealant from the wall and the vanity top.

Let it sit and dry for 24 hours.



## FINISHED

