

ASSEMBLY INSTRUCTION



IMPORTANT:

PLEASE READ INSTRUCTION BEFORE STARING THE ASSEMBLY

Scan this QR code and watch our assembly tutorials

Or go to: https://youtu.be/yph_FyKiMic

PLEASE DO NOT RETURN TO STORE

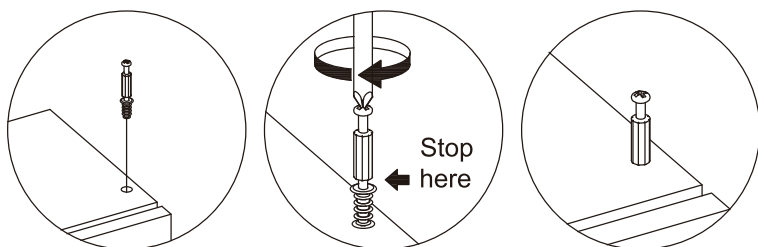


**Please do not return this product to the retailer!!
We are able to assist you in ANY way**

If you find that you have any trouble with assembly or missing or damaged parts please contact the seller.

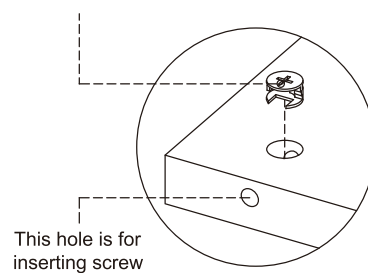
1. Screw installation method

When the screw is installed, please keep it in line with the board, and do not tighten it too tightly

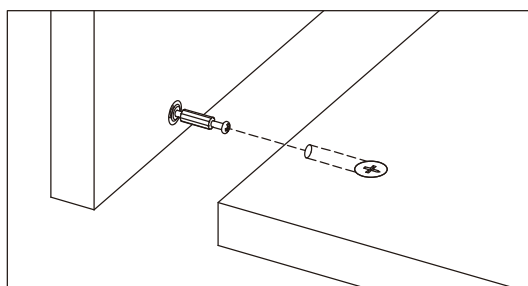


2. Check the direction of the nut

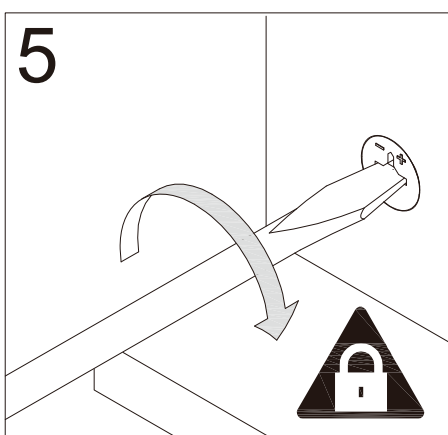
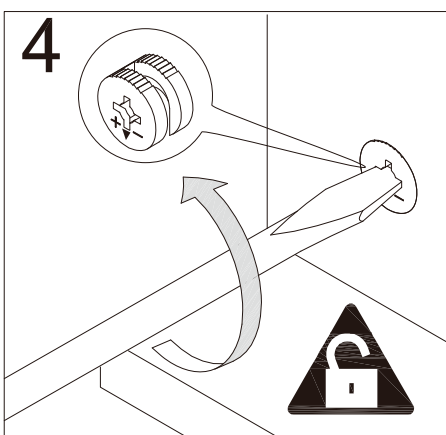
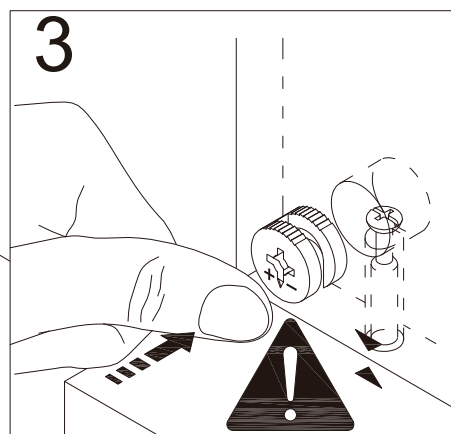
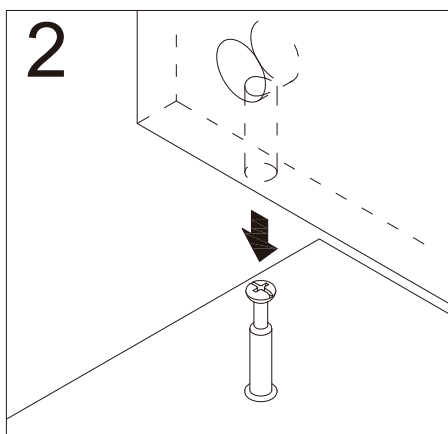
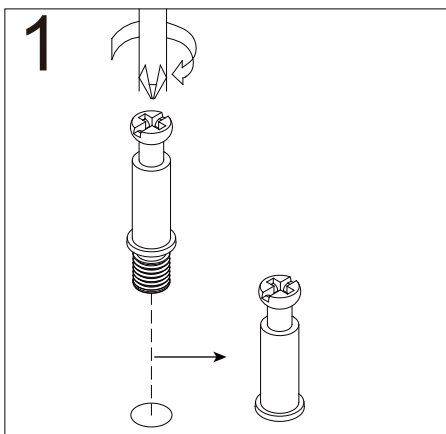
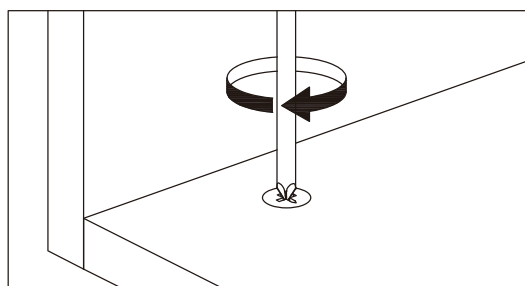
This direction of the marked nut is consistent with the direction in which the screw is inserted

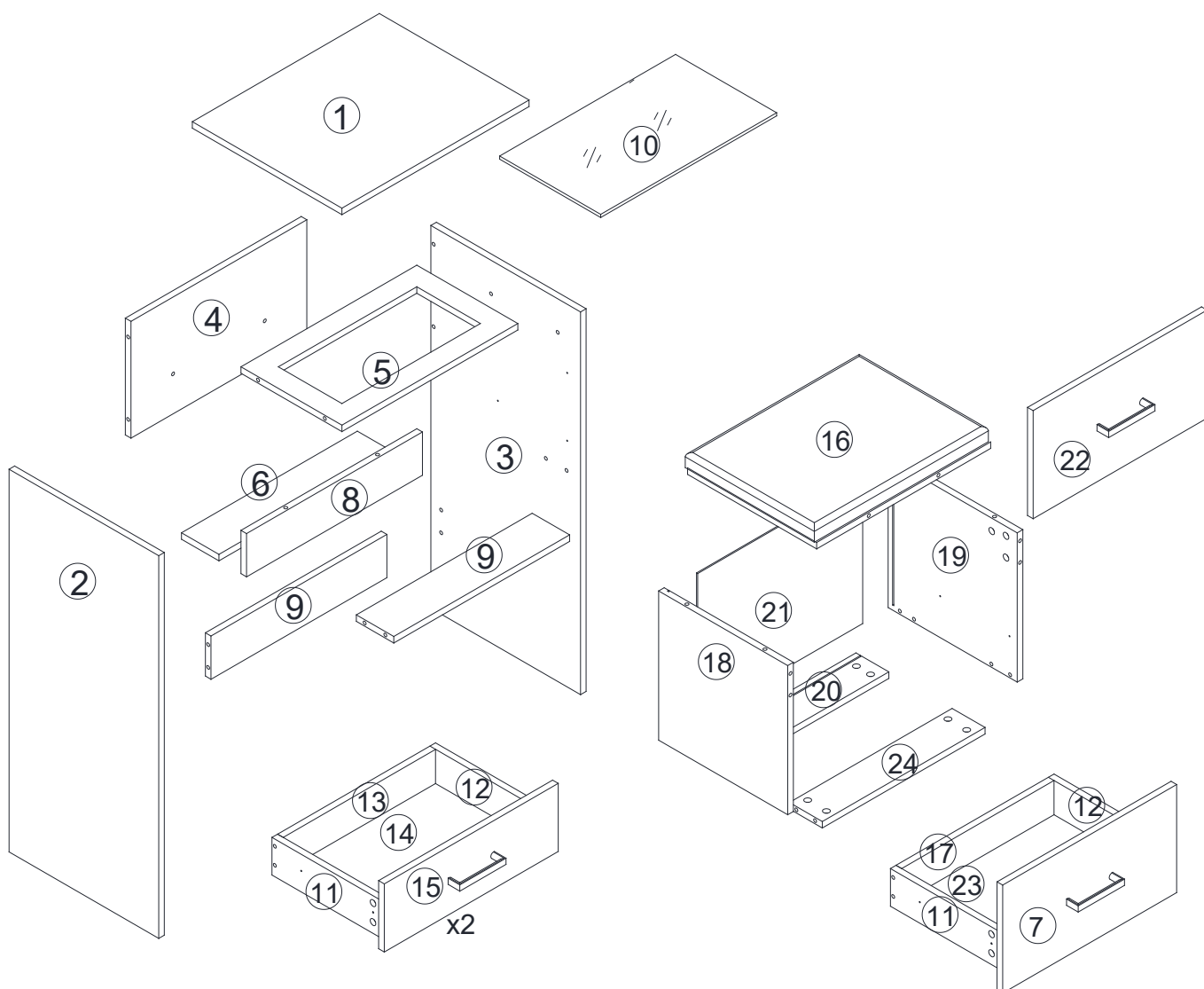


3. Installation on the board with fixing screws



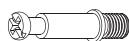
3. Rotate slowly until it stops





1 - x1	6 - x1	11 - x3	16 - x1	21 - x1
2 - x1	7 - x1	12 - x3	17 - x1	22 - x1
3 - x1	8 - x1	13 - x3	18 - x1	23 - x1
4 - x1	9 - x2	14 - x3	19 - x1	23 - x1
5 - x1	10 - x1	15 - x2	20 - x1	

HARDWARE



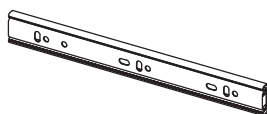
A	SCREW & PLASTIC LOCK	x52
---	-------------------------	-----



B	SCREW & METAL LOCK	x52
---	-----------------------	-----



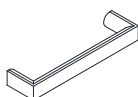
C	SCREW	x36
---	-------	-----



D	RAIL	x6
---	------	----



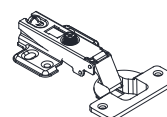
E	HANDLE	x8
---	--------	----



F	L PLATE	x4
---	---------	----



G	SCREW	x12
---	-------	-----

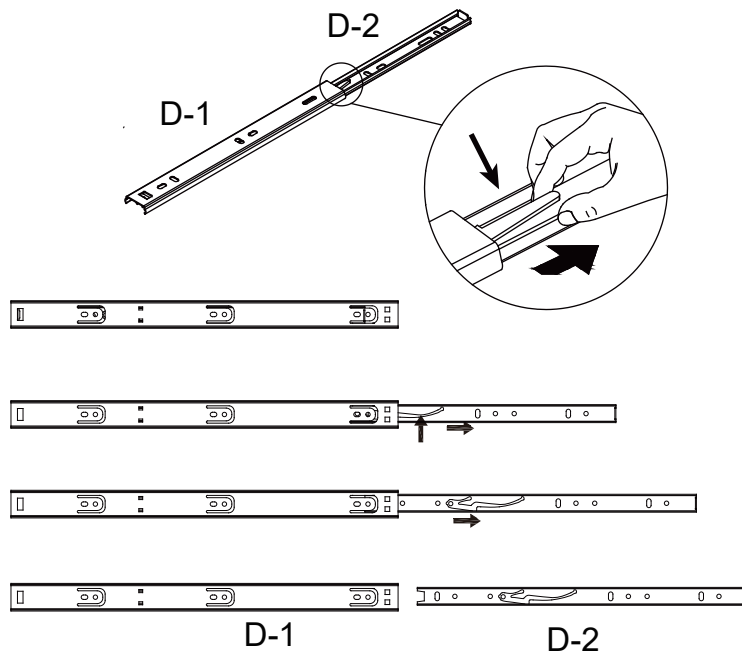


H	HINGE	x2
---	-------	----

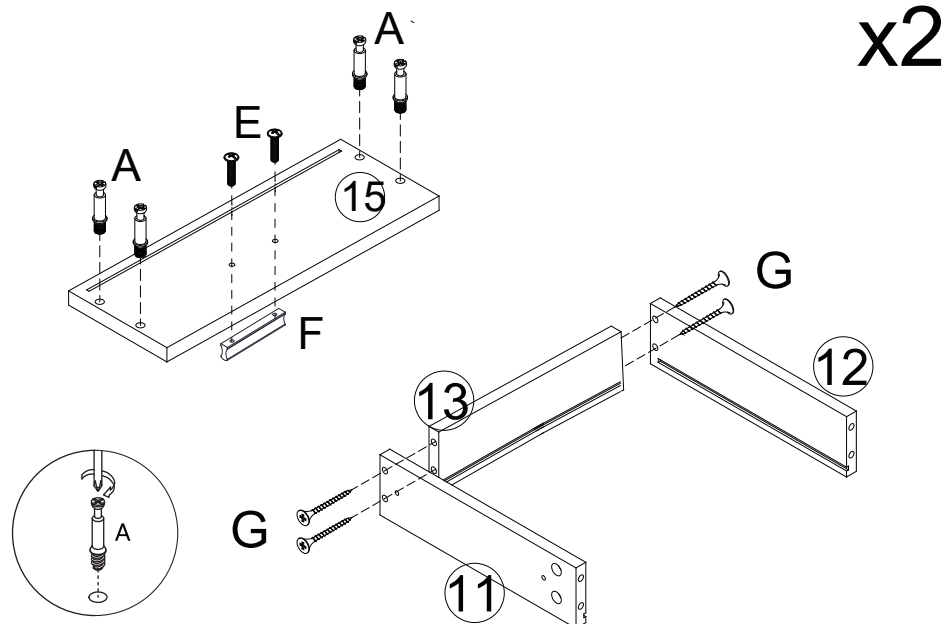


J	FOOT PAD	x6
---	----------	----

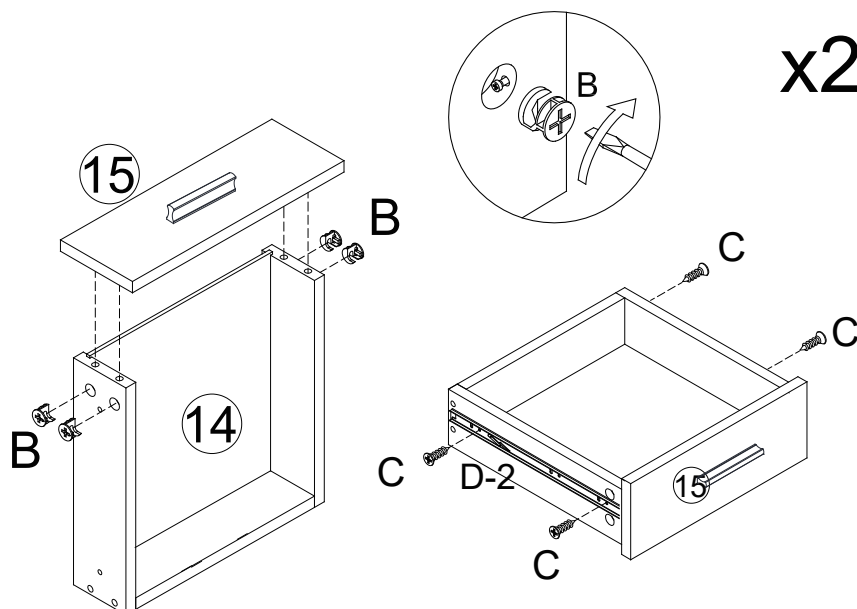
Step1



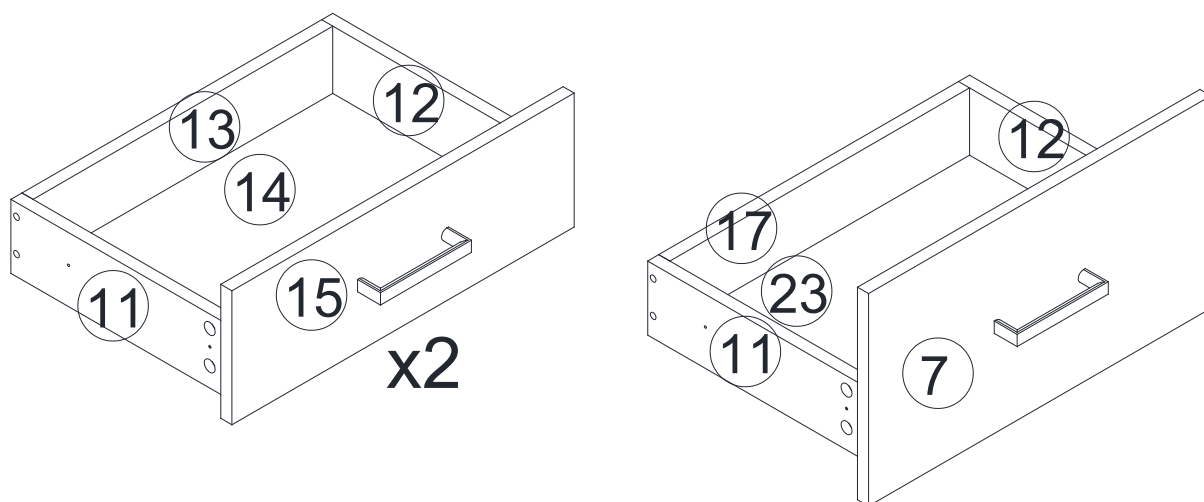
Step2



Step3

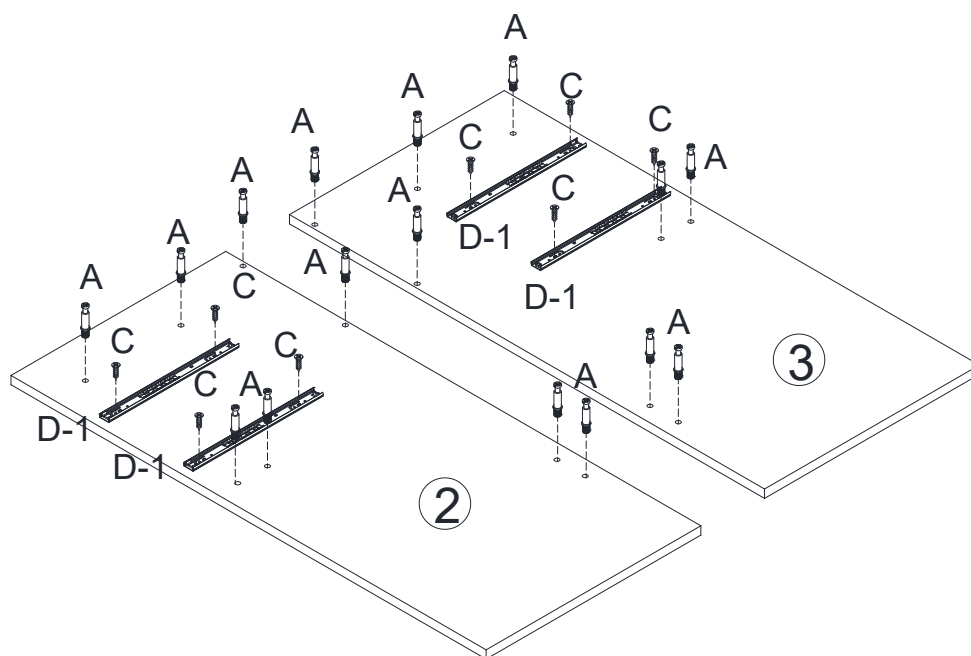


Step4

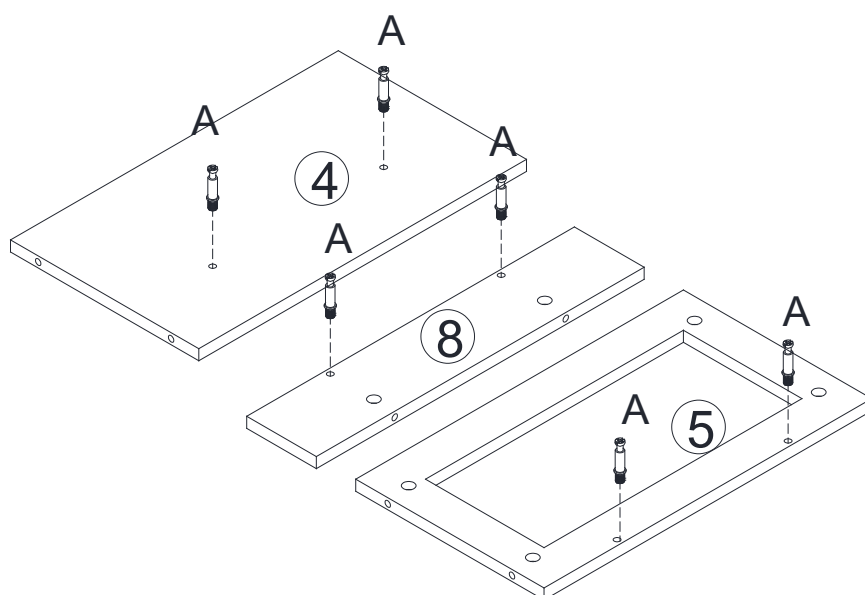


The three drawers are installed in the same way

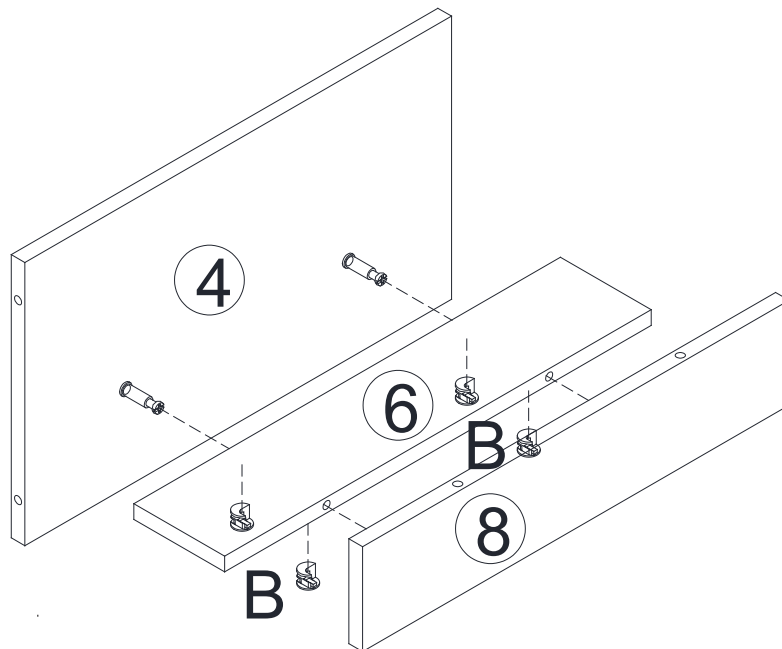
Step5



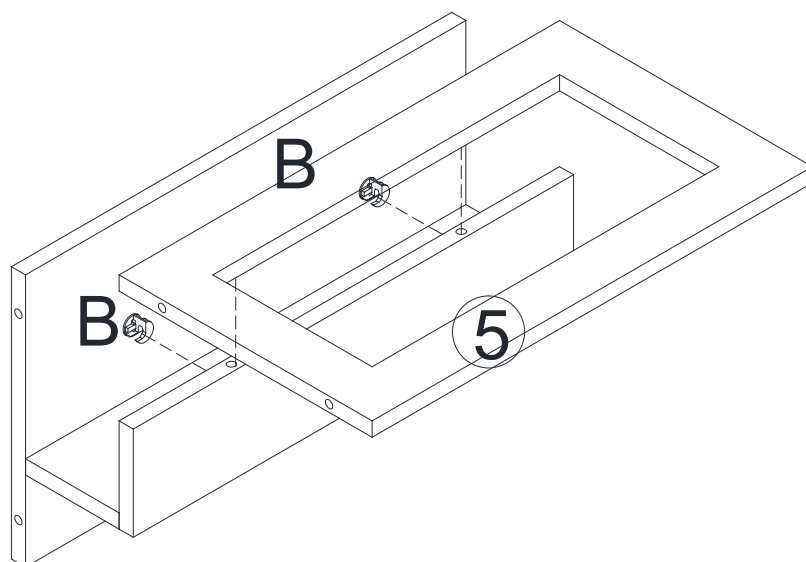
Step6



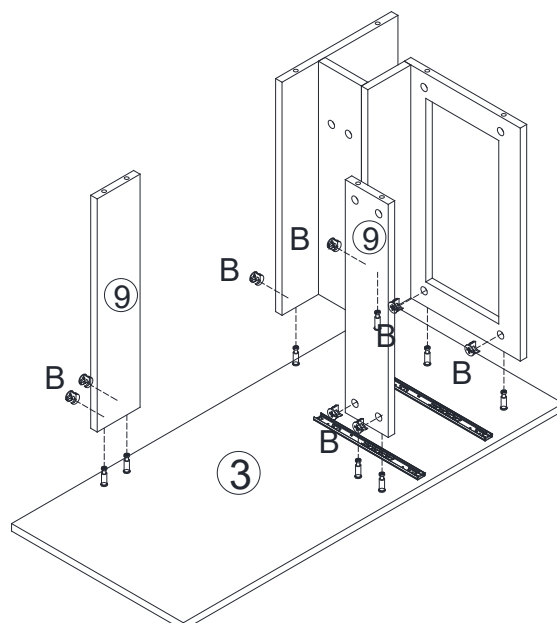
Step7



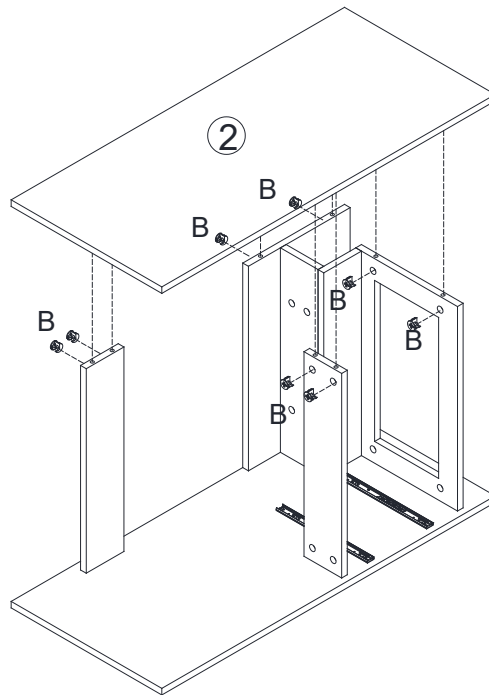
Step8



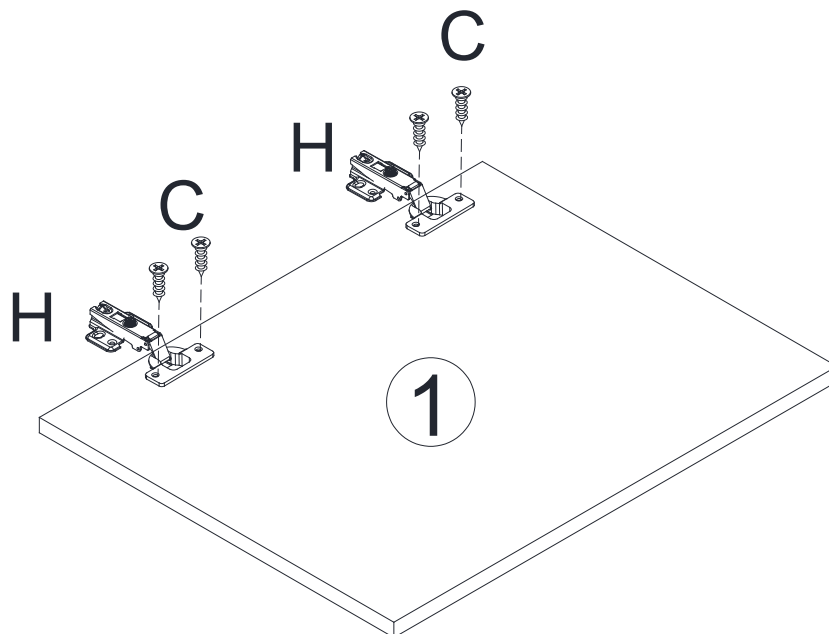
Step9



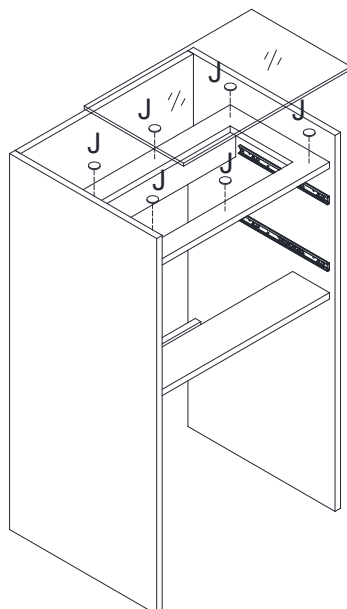
Step10



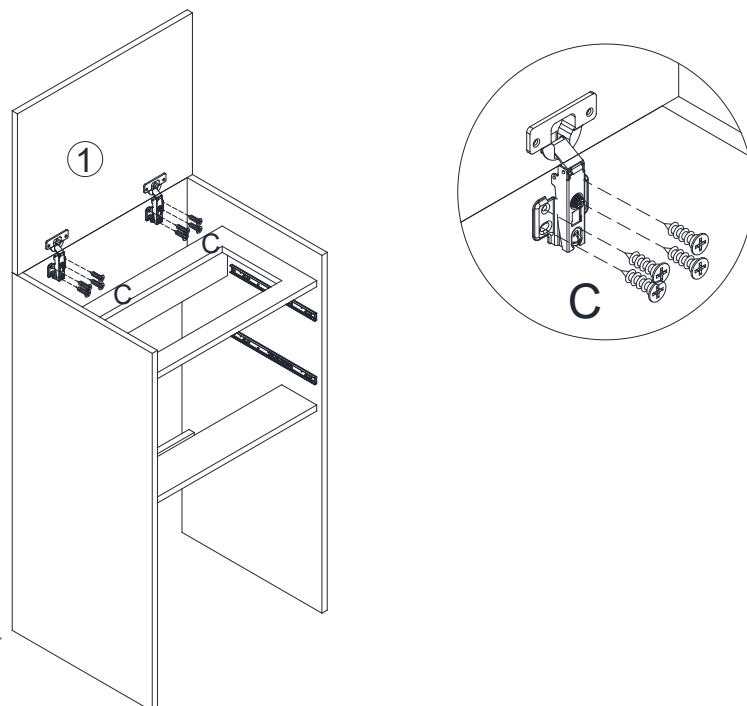
Step11



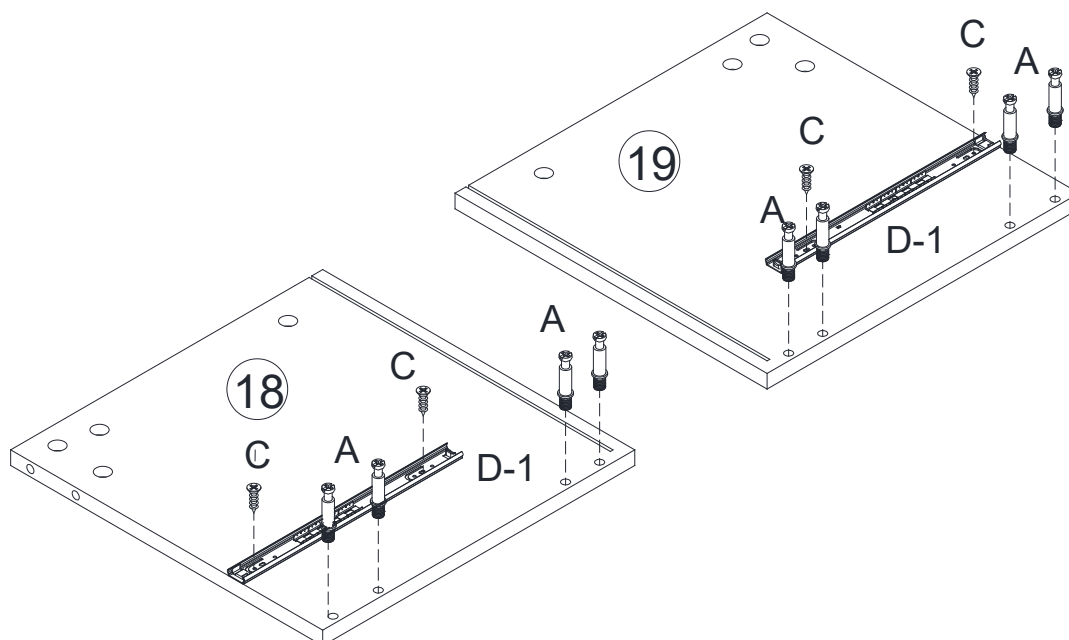
Step12



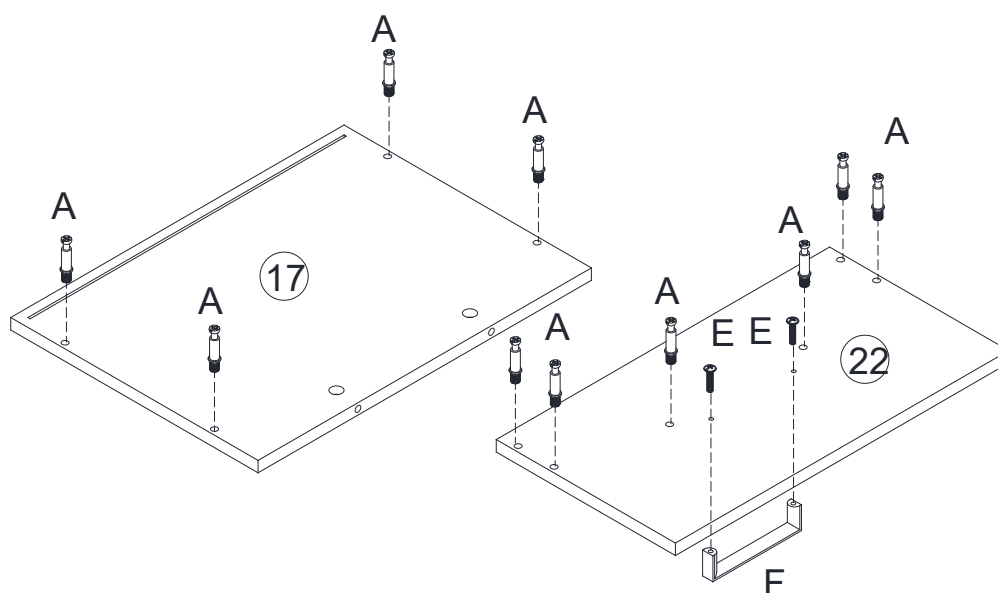
Step13



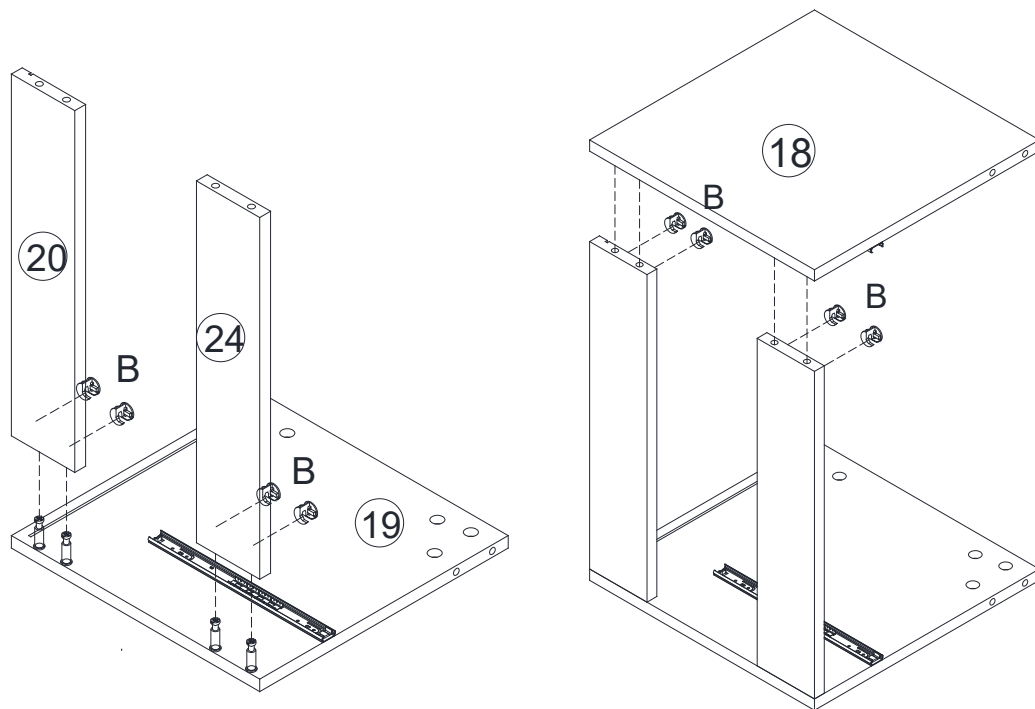
Step14



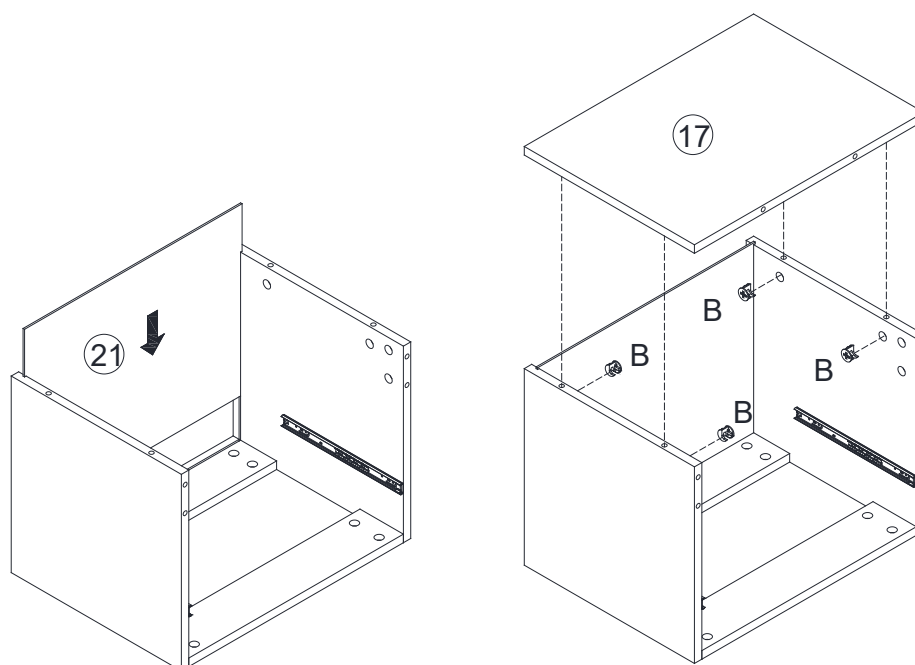
Step15



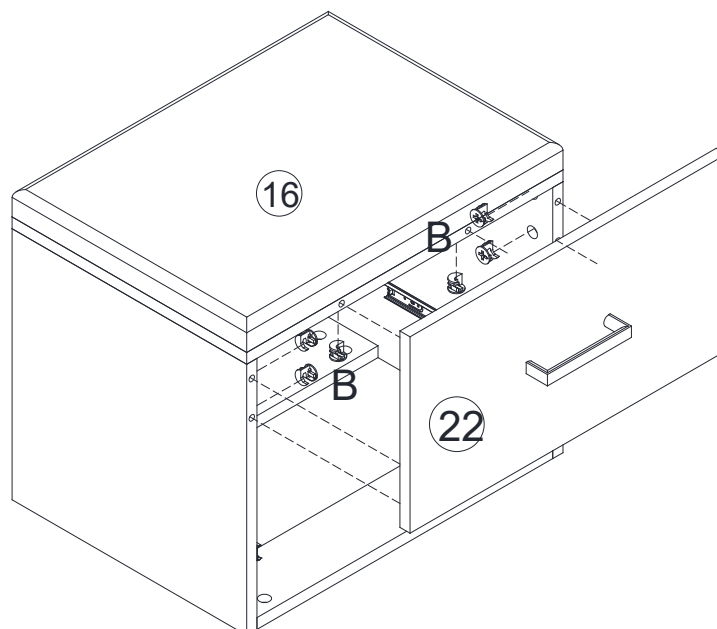
Step16



Step17



Step18



Step19

