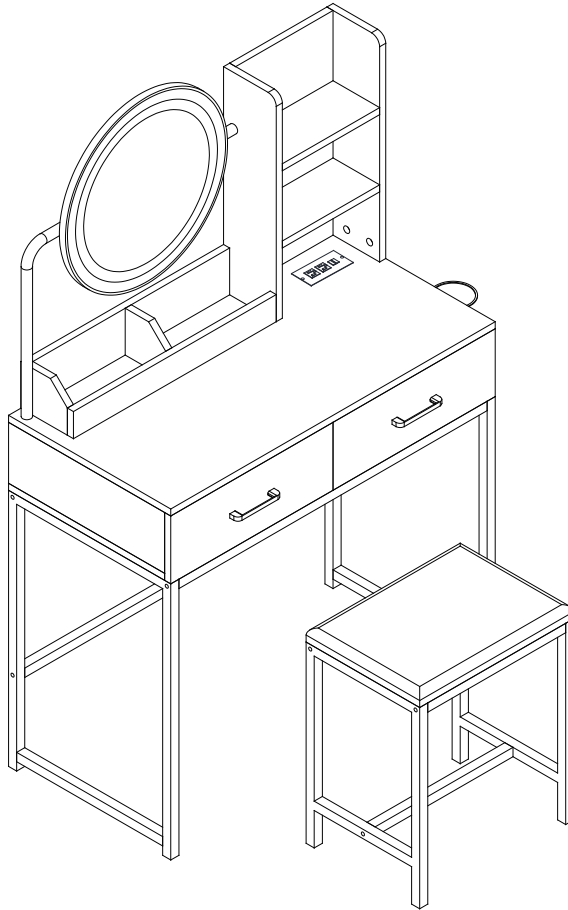
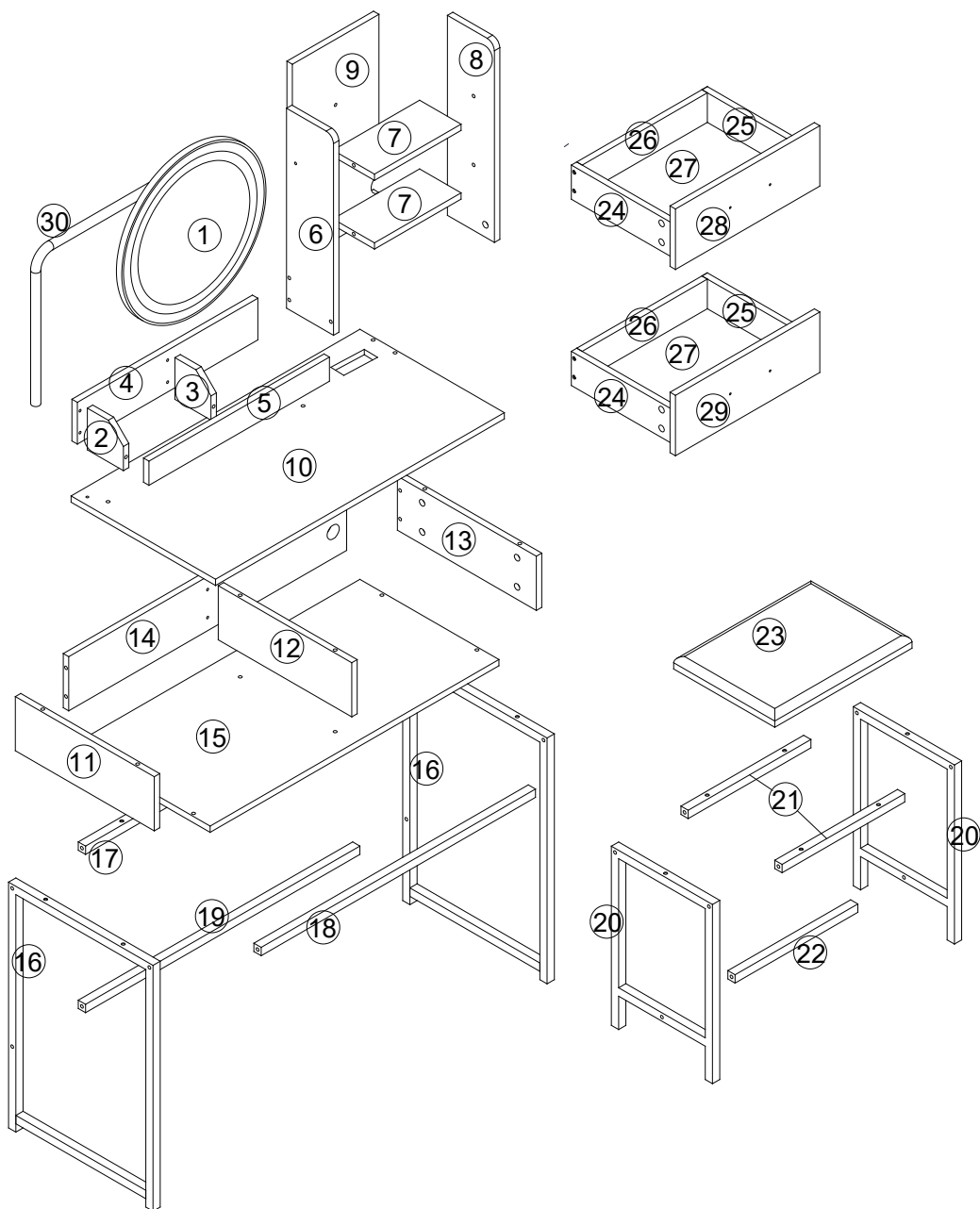


D091

INSTALLATION MANUAL

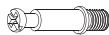


Thank you for purchasing the goods in our store this time
Please read this manual carefully before using it
Please keep this manual properly



1 - x1	6 - x1	11 - x1	16 - x2	21 - x2	26 - x2
2 - x1	7 - x2	12 - x1	17 - x1	22 - x1	27 - x2
3 - x1	8 - x1	13 - x1	18 - x1	23 - x1	28 - x1
4 - x1	9 - x1	14 - x1	19 - x1	24 - x2	29 - x1
5 - x1	10 - x1	15 - x1	20 - x2	25 - x2	

HARDWARE



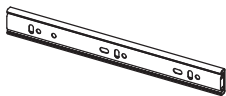
A	SCREW & PLASTIC LOCK	x38
---	-------------------------	-----



B	SCREW & METAL LOCK	x38
---	-----------------------	-----



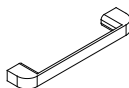
C	SCREW	x44
---	-------	-----



D	RAIL	x4
---	------	----



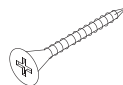
E	HANDLE	x4
---	--------	----



F	L PLATE	x2
---	---------	----



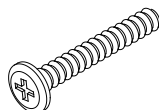
G	SHAKE HANDS	x14
---	-------------	-----



J	SCREW	x2
---	-------	----



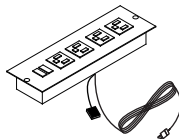
K	SCREW	x2
---	-------	----



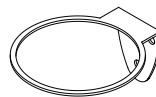
M	SCREW	x14
---	-------	-----



N		x2
---	--	----



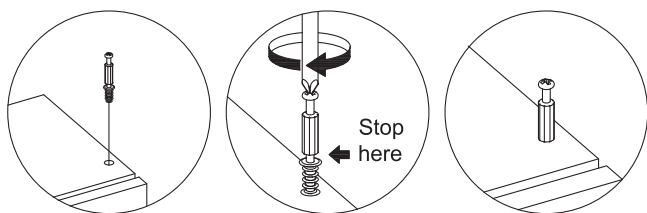
Q		x1
---	--	----



R		x1
---	--	----

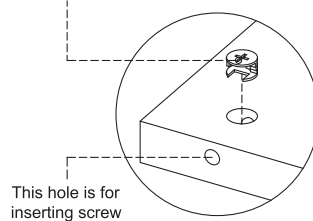
1. Screw installation method

When the screw is installed, please keep it in line with the board, and do not tighten it too tightly

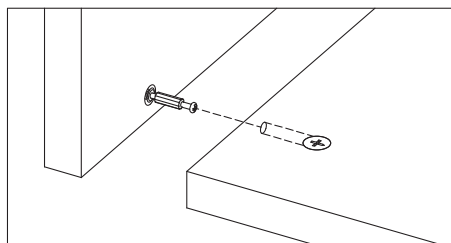


2. Check the Nut direction

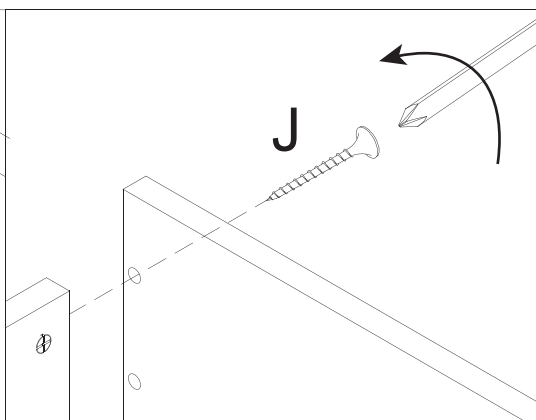
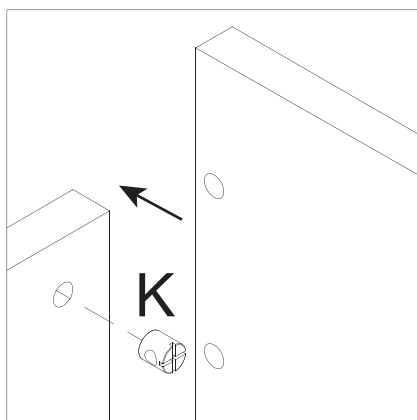
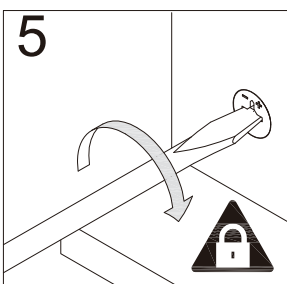
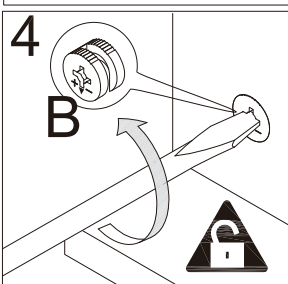
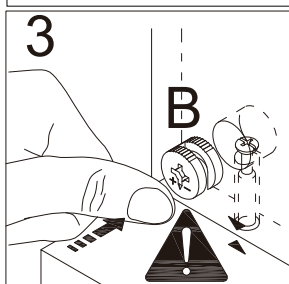
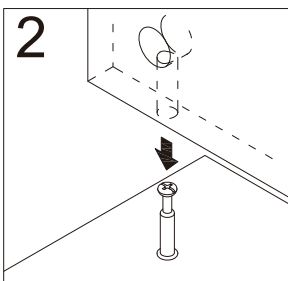
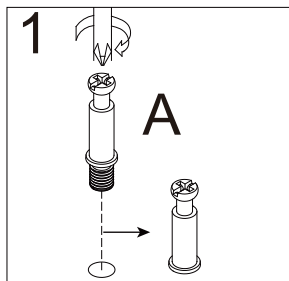
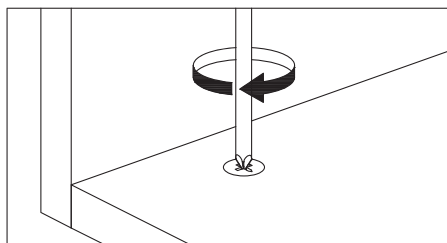
This direction of the marked nut is consistent with the direction in which the screw is inserted



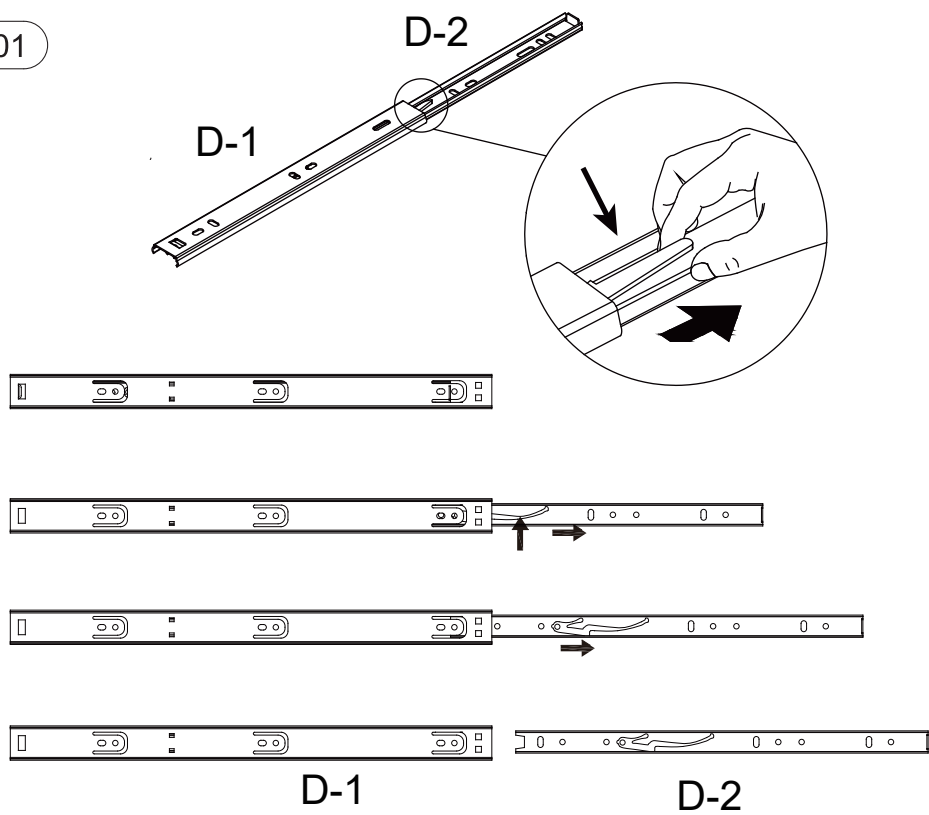
3. Installation on the board with fixing screws



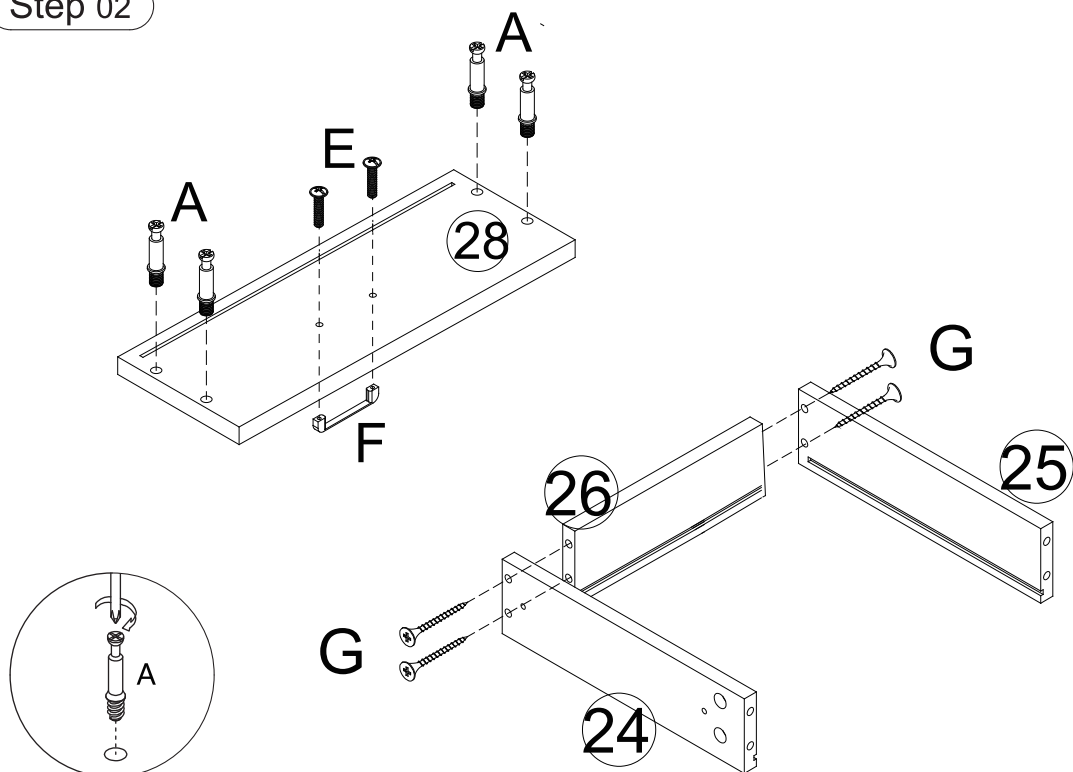
3. Rotate slowly until it stops



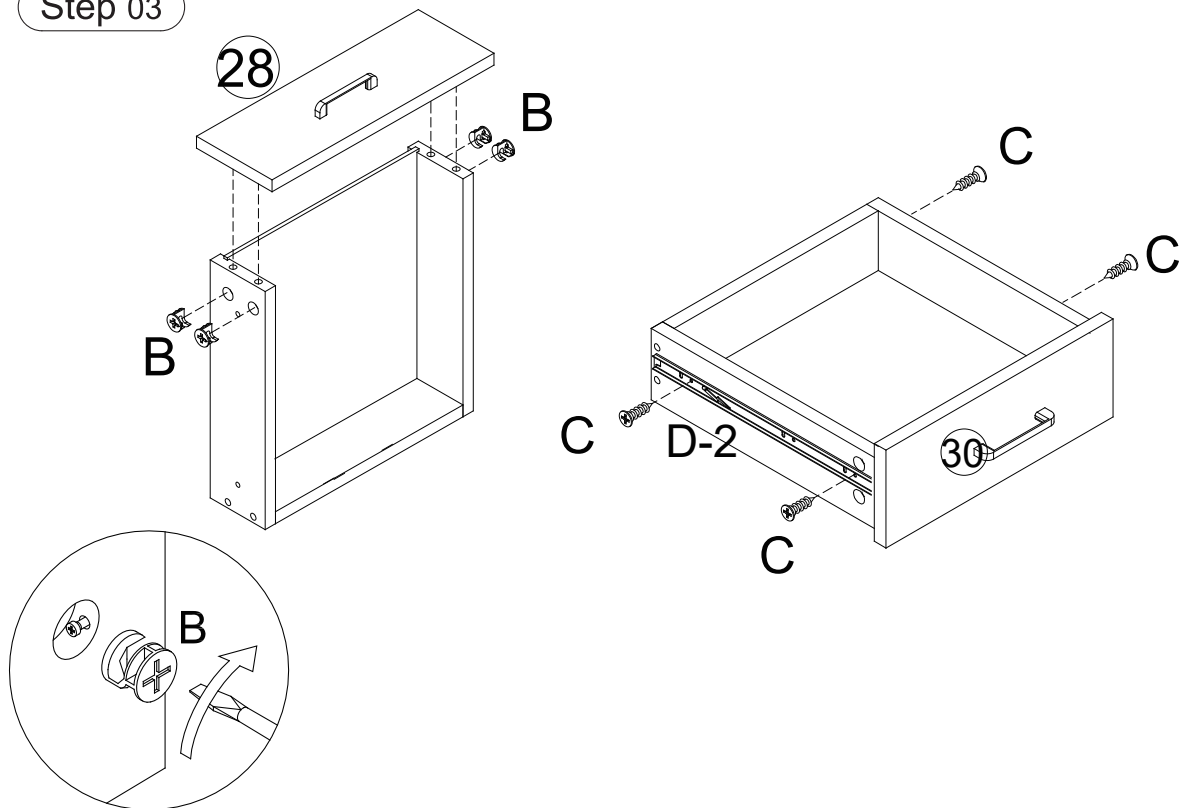
Step 01



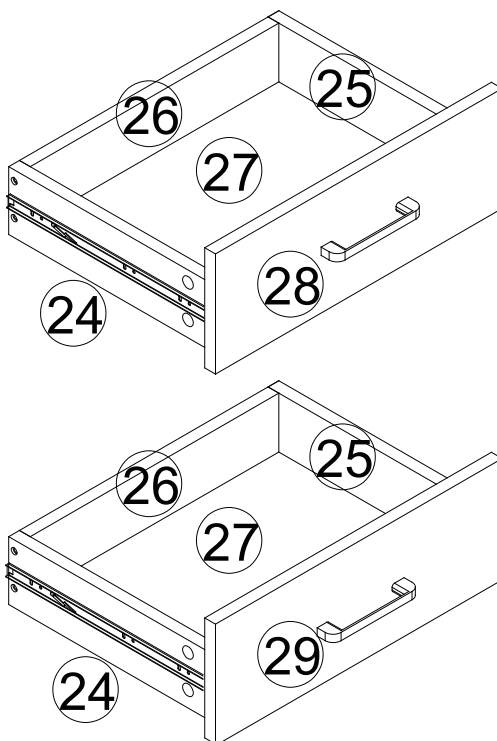
Step 02



Step 03

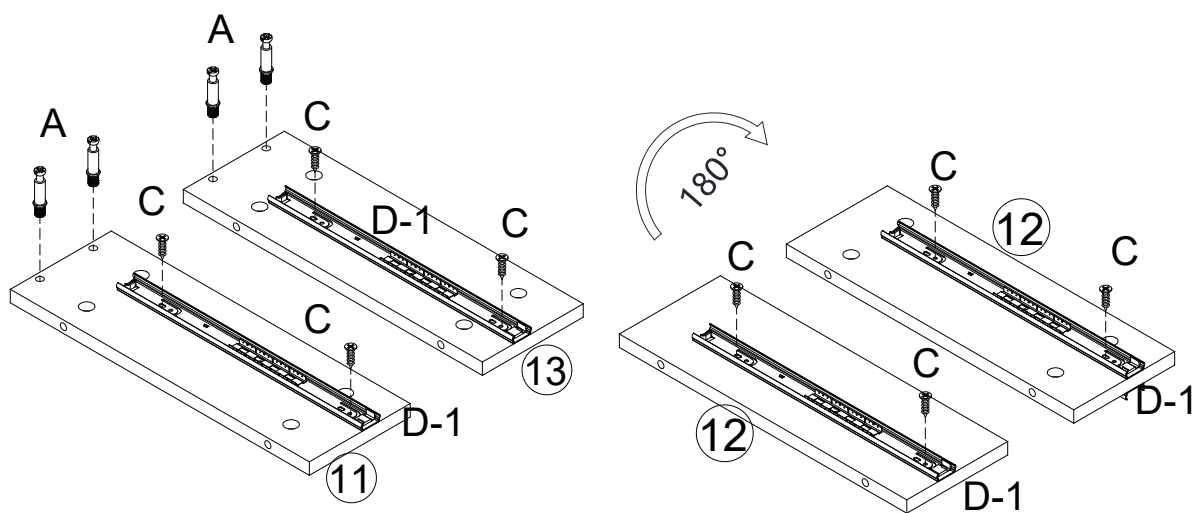


Step 04

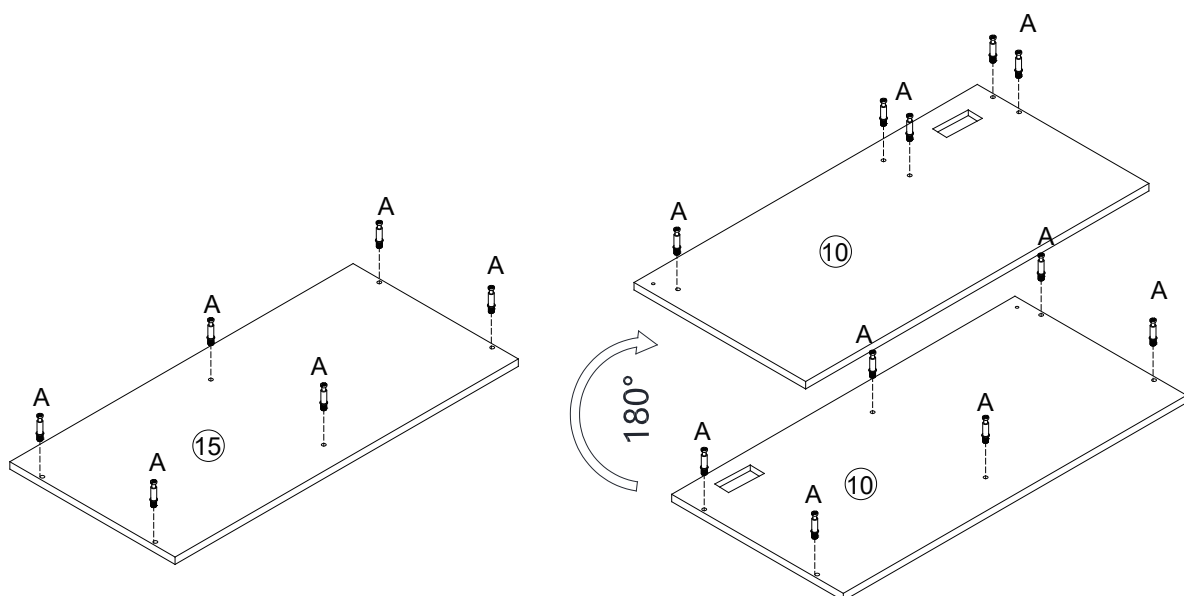


The two drawers are installed in the same way

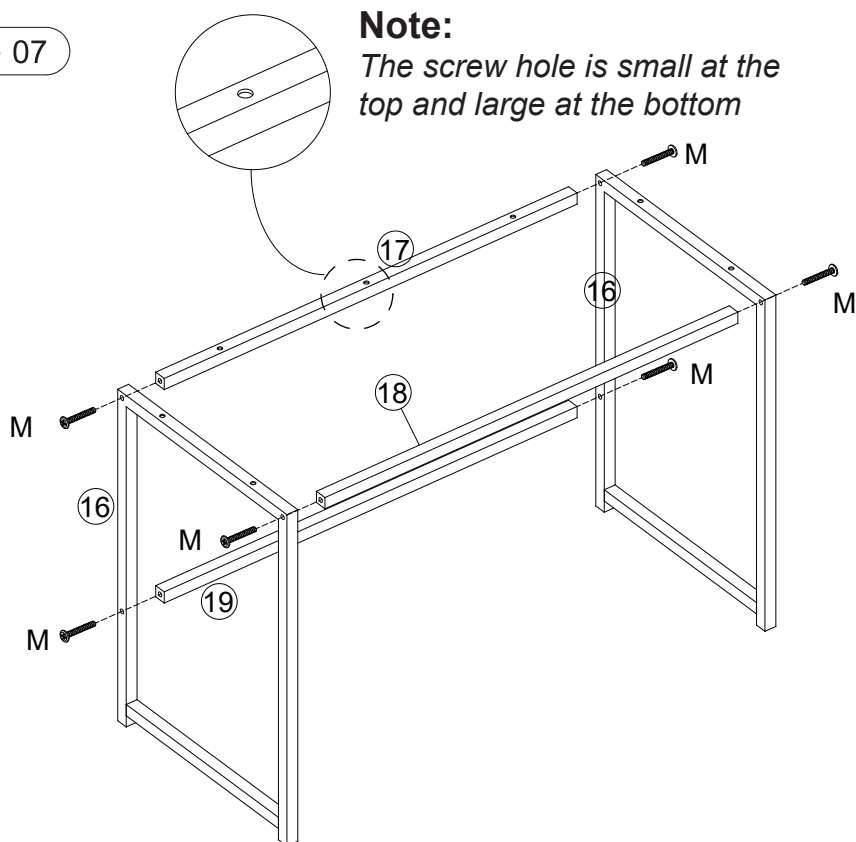
Step 05



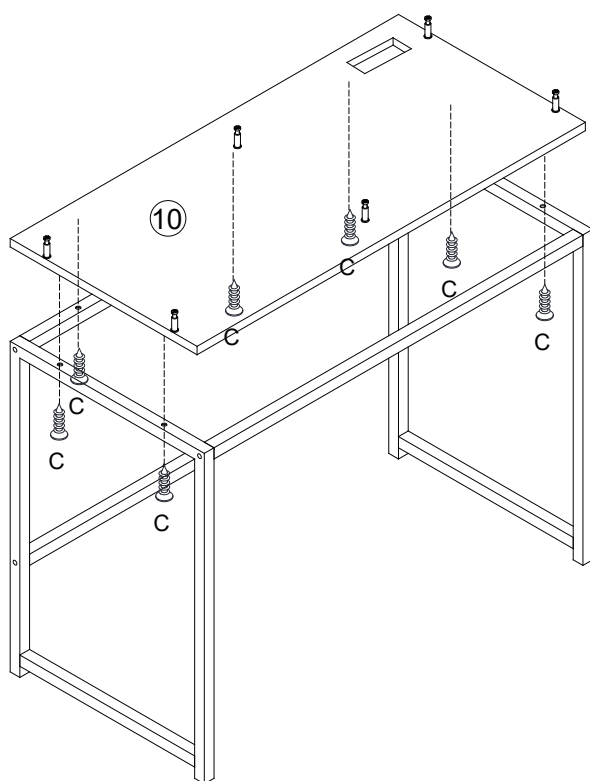
Step 06



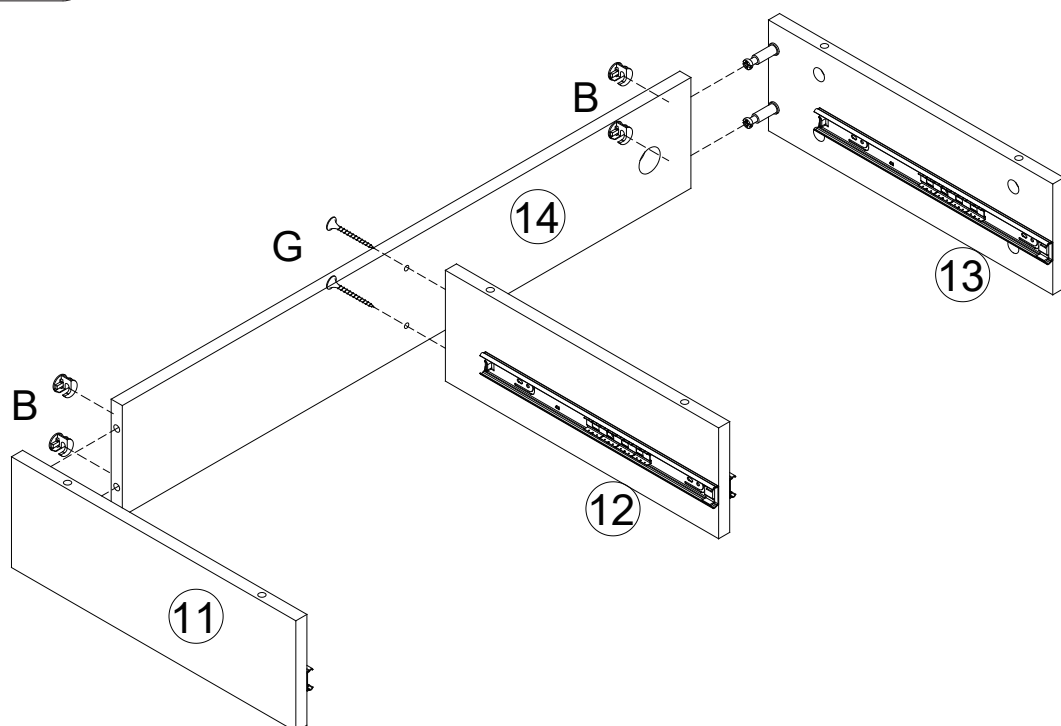
Step 07



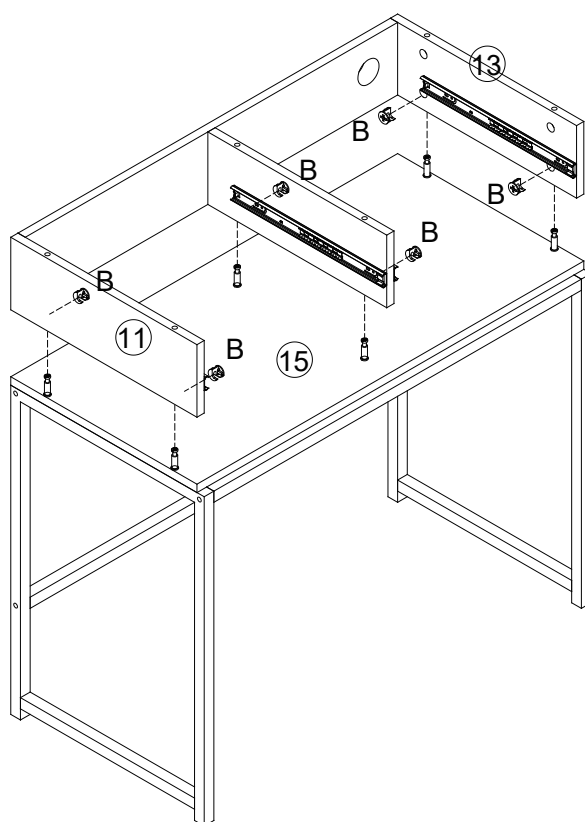
Step 08



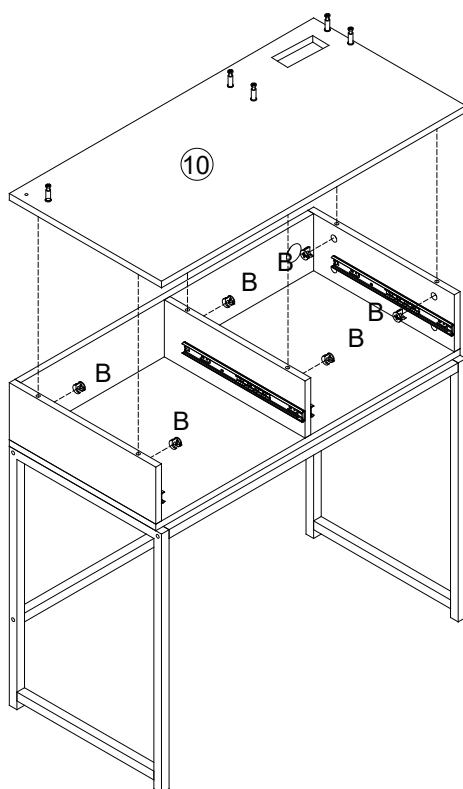
Step 09



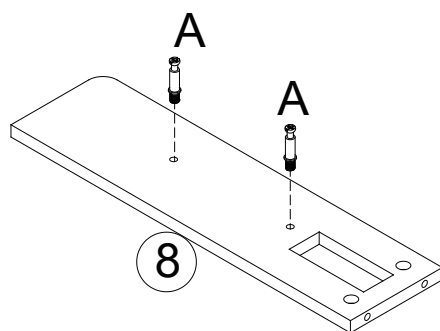
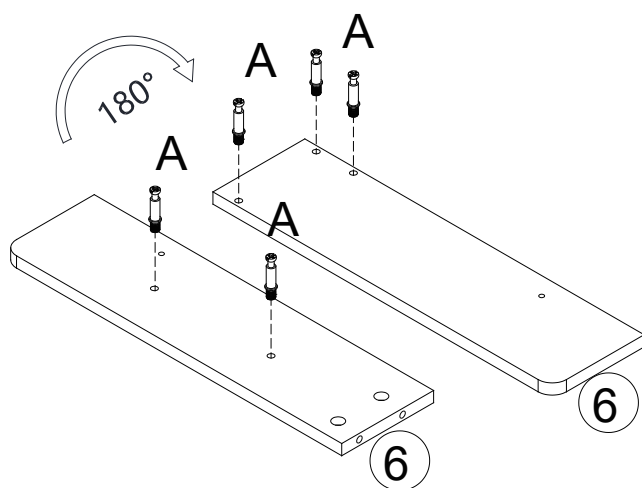
Step 10



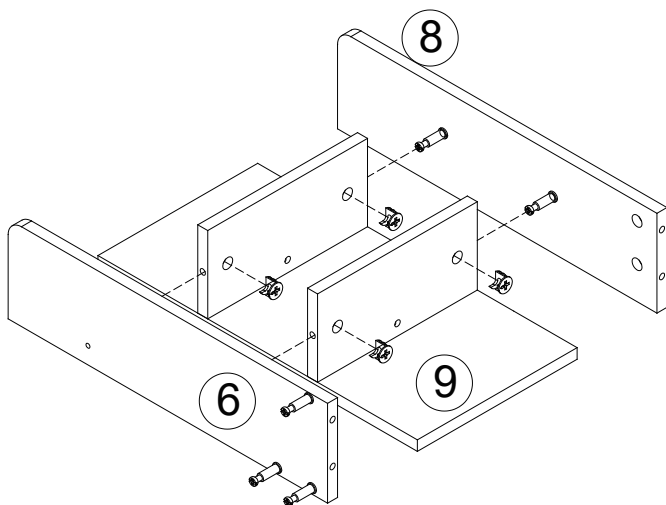
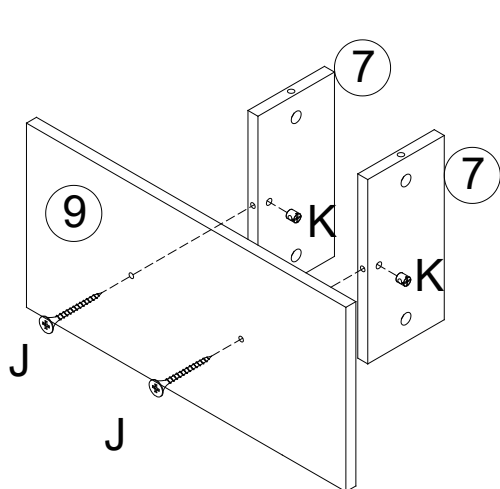
Step 11



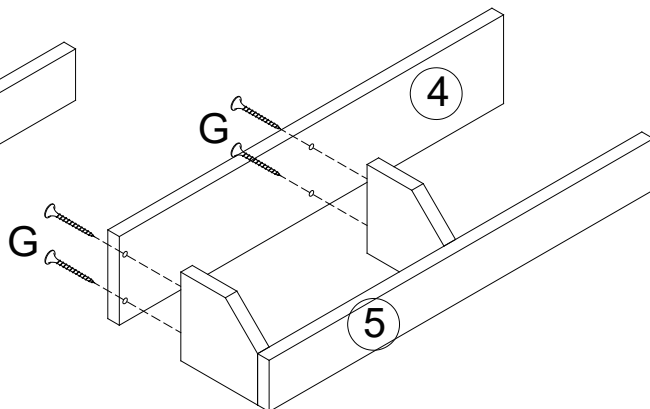
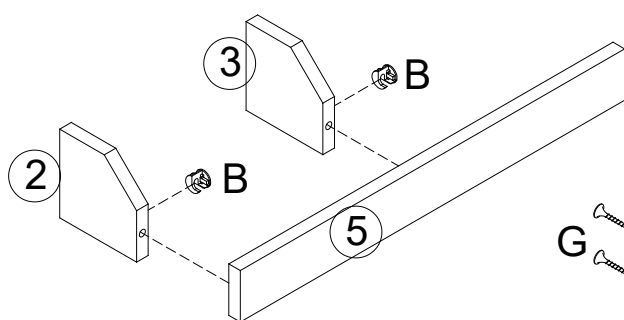
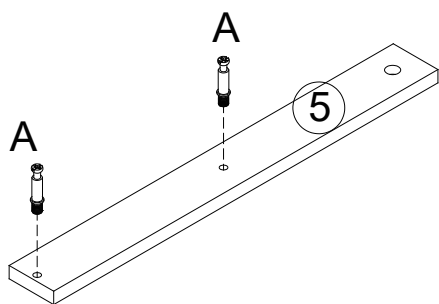
Step 12



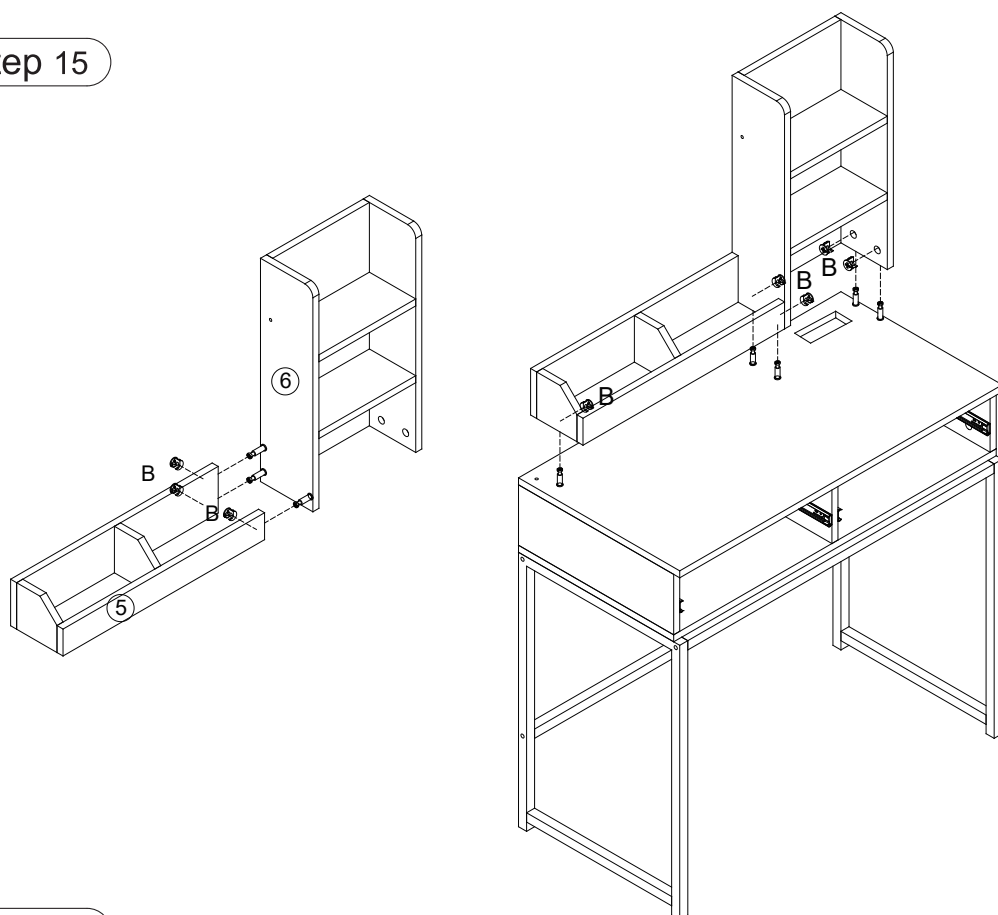
Step 13



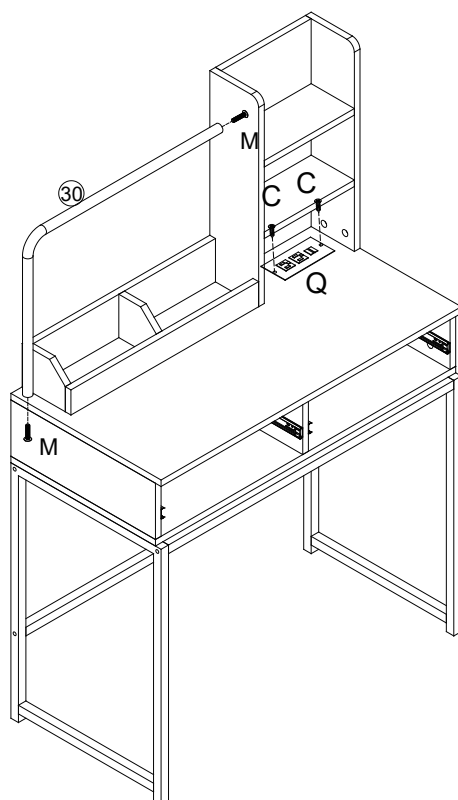
Step 14



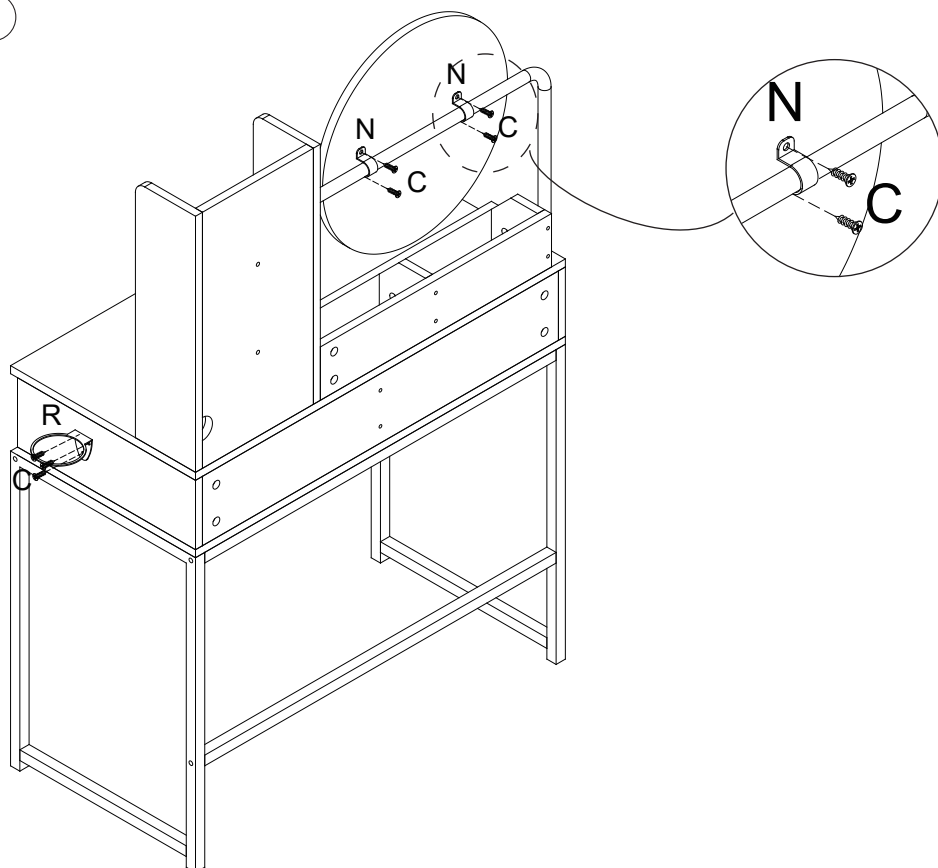
Step 15



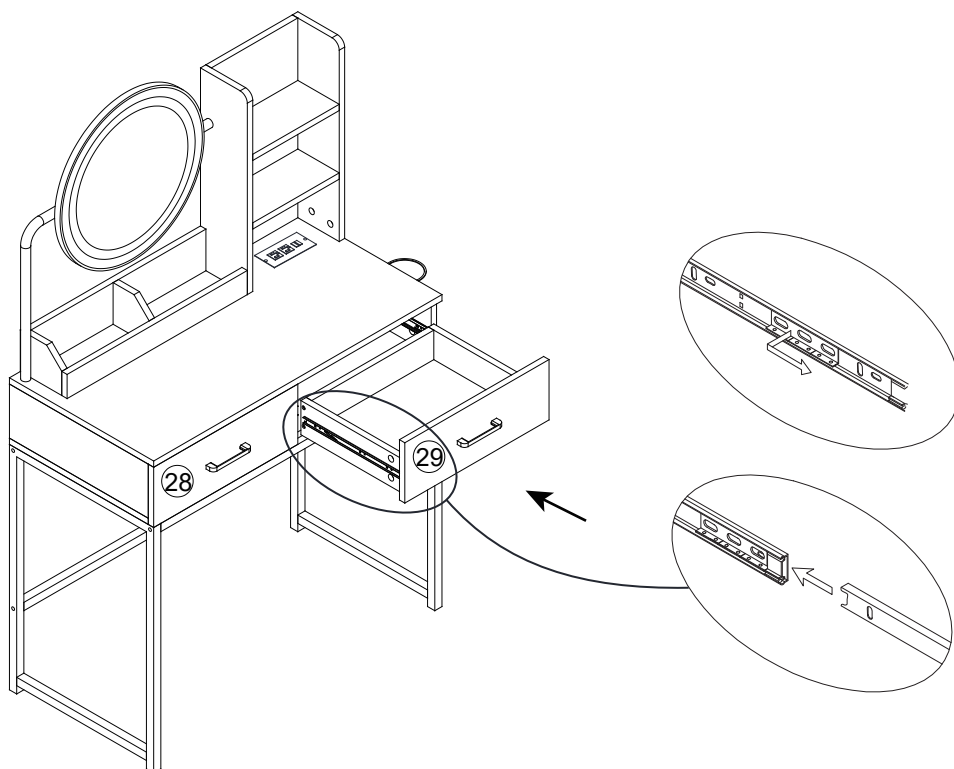
Step 16



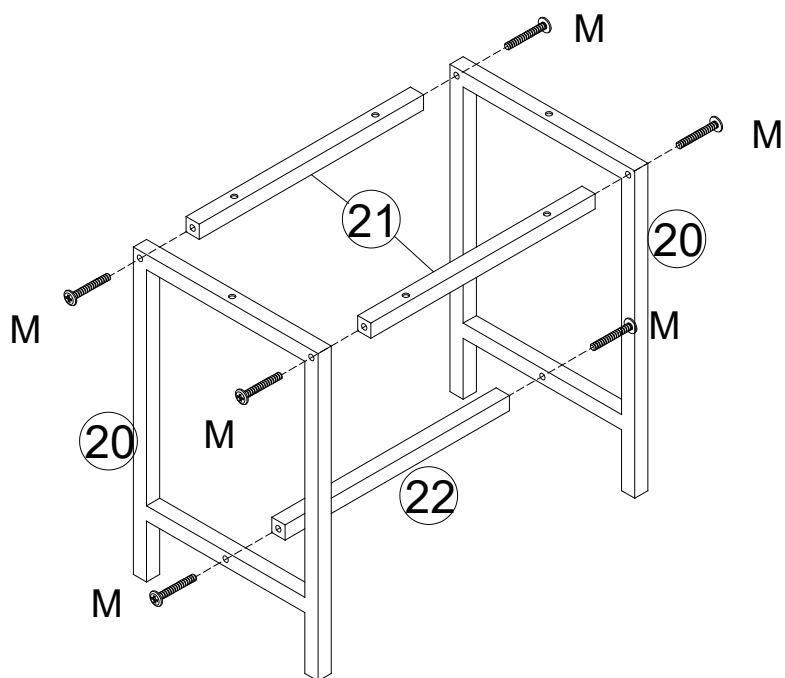
Step 17



Step 18



Step 19



Step 20

