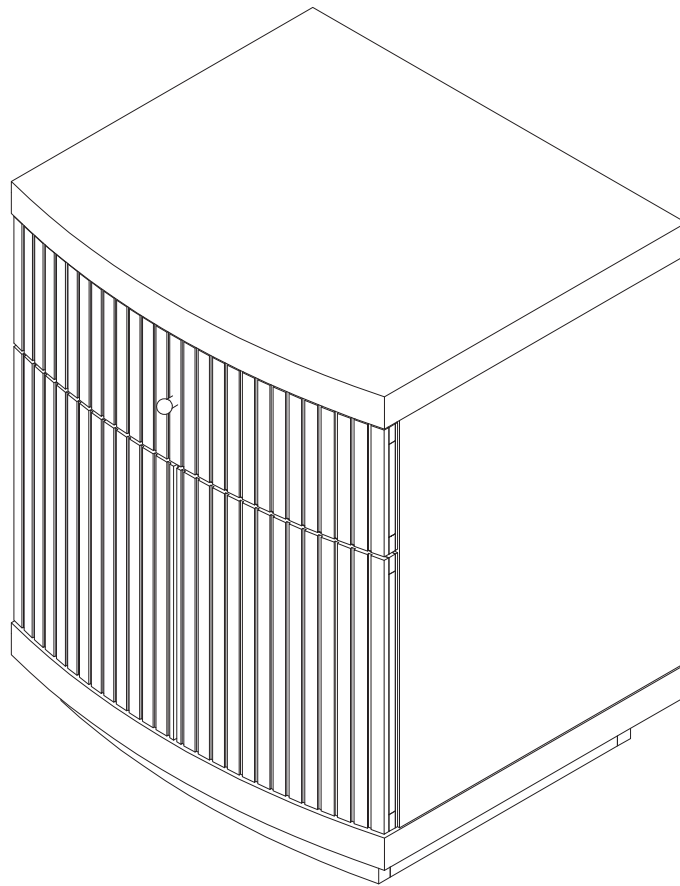


Let's build the

Tambellini Nightstand

SKU 32810



Scan me!

Free Lifetime
Warranty

nathan james

25-0517-VN

Ok, let's get rolling

This should be easy, just follow our instructions and you will be back to Netflix in no time.

Estimated time for assembly

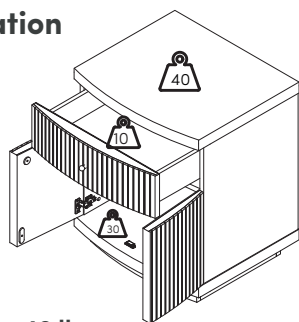


60:00

What you need

- Phillips-head screwdriver
- Some of your favourite bubbly or your preferred relaxant
- Use the packaging carton as a working surface to prevent product damage during assembly

Weight Limitation



Top Max. Capacity: 40 lbs
Drawer Max. Capacity: 10 lbs.
Bottom Max. Capacity: 30 lbs.

Toll-free at 1-866-619-1004
Help@nathanjames.com
Nathanjames.com/help

What's included

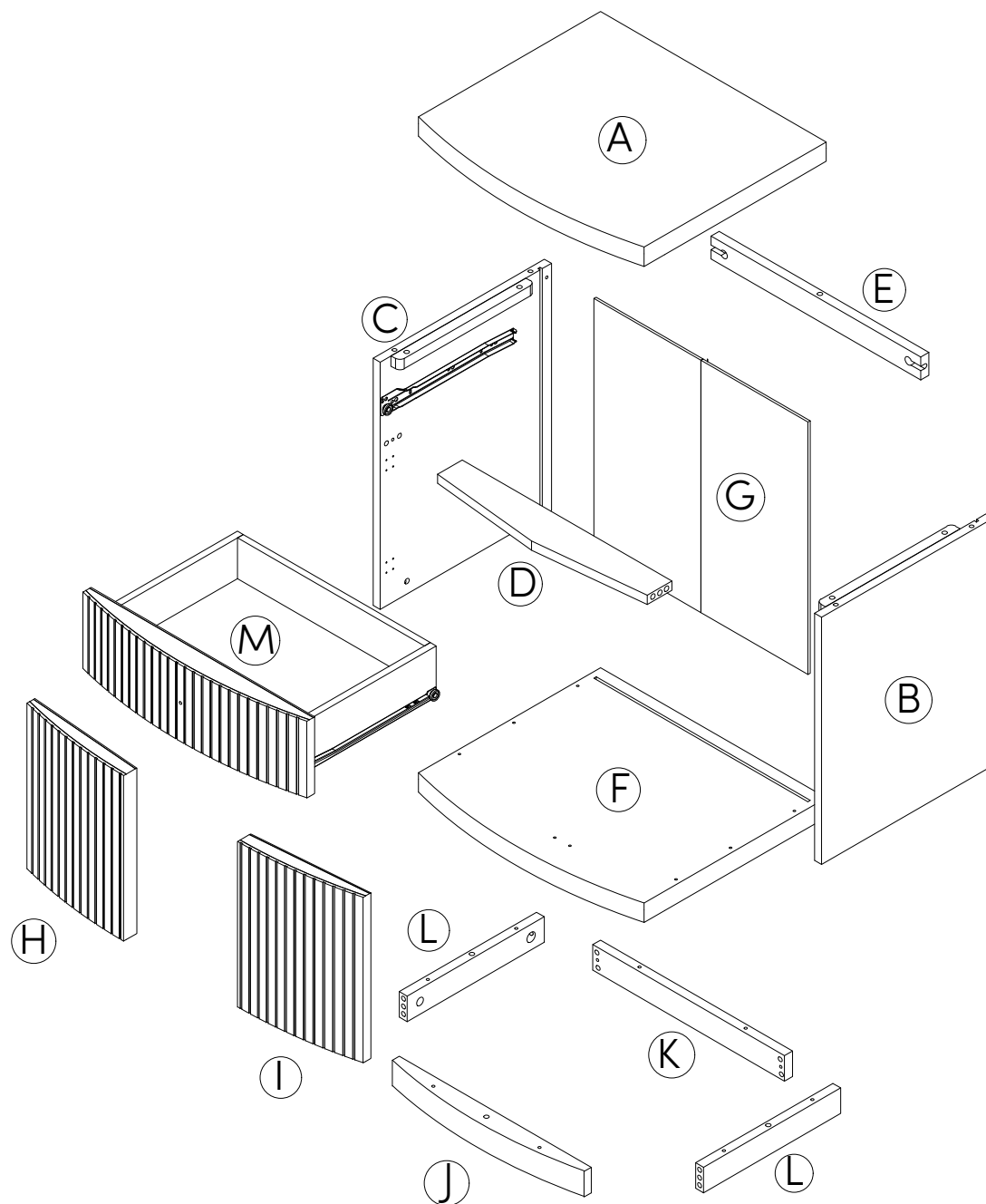
Description		Qty
A	Top Panel	1
B	Right Side Panel	1
C	Left Side Panel	1
D	Top Front Rail	1
E	Top Back Rail	1
F	Bottom Panel	1
G	Back Panel	1
H	Left Door	1
I	Right Door	1
J	Base - Front Panel	1
K	Base - Back Panel	1
L	Base - Side Panel	2
M	Drawer	1

Scan me!

Free Lifetime
Warranty



The goods



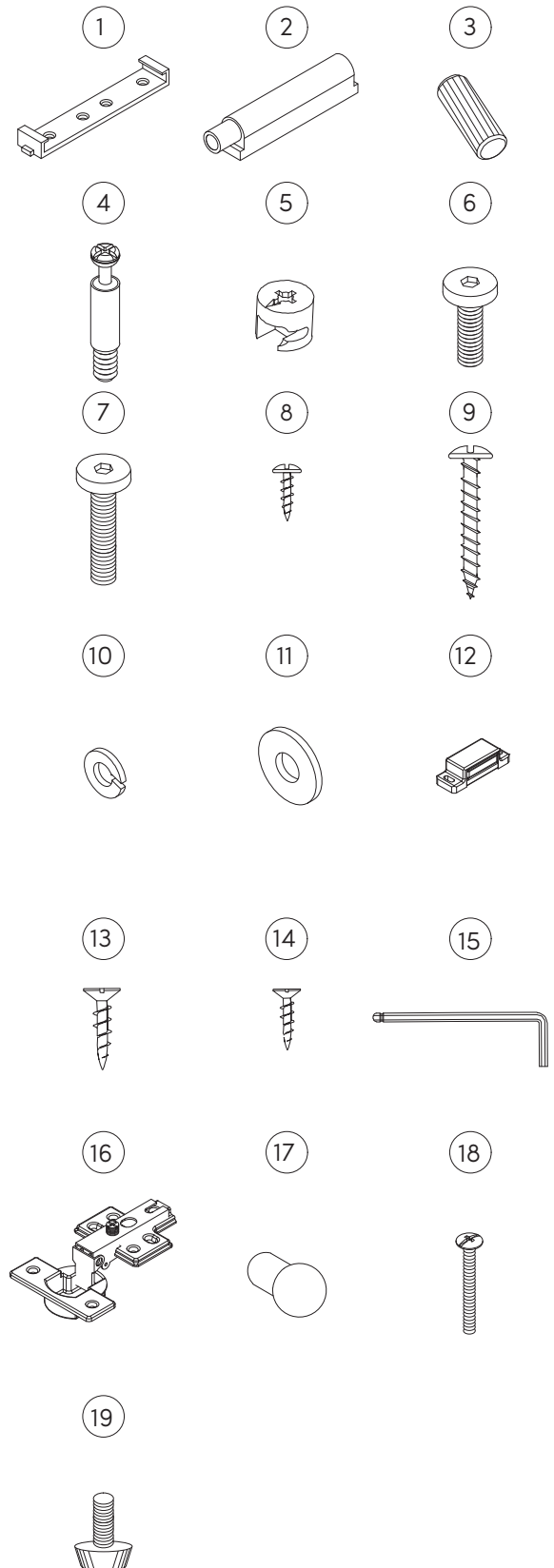
IMPORTANT

1. Do not tighten bolts / screws completely until all bolts / screws are lined up and inserted into holes.
2. Do not over tighten screws and bolts to avoid stripping.

What's included

Description		Qty
1	Push Latch Bracket	2
2	Magnetic Push Latch	2
3	Ø8 x 30mm Wooden Dowel (Extra 2pcs)	21
4	Cam Bolt (Extra 2pcs)	14
5	Cam Lock (Extra 2pcs)	14
6	Ø1/4" x 35mm Hex Button Head Bolt	4
7	Ø1/4" x 60mm Hex Button Head Bolt	1
8	M3 x15mm Screw	2
9	M4 x60mm Screw	10
10	Ø1/4" x 10mm Spring Washer	5
11	Ø1/4" x 13mm Flat Washer	5
12	Magnetic Door Catch	1
13	M3.5 x15mm Screw (Extra 2pcs)	26
14	M3 x12mm Screw (Extra 2pcs)	10
15	Allen Key	1
16	Hinge	4
17	Knob	1
18	Ø5/32" x 45mm Hex Button Head Bolt	1
19	Leveler (Extra)	2

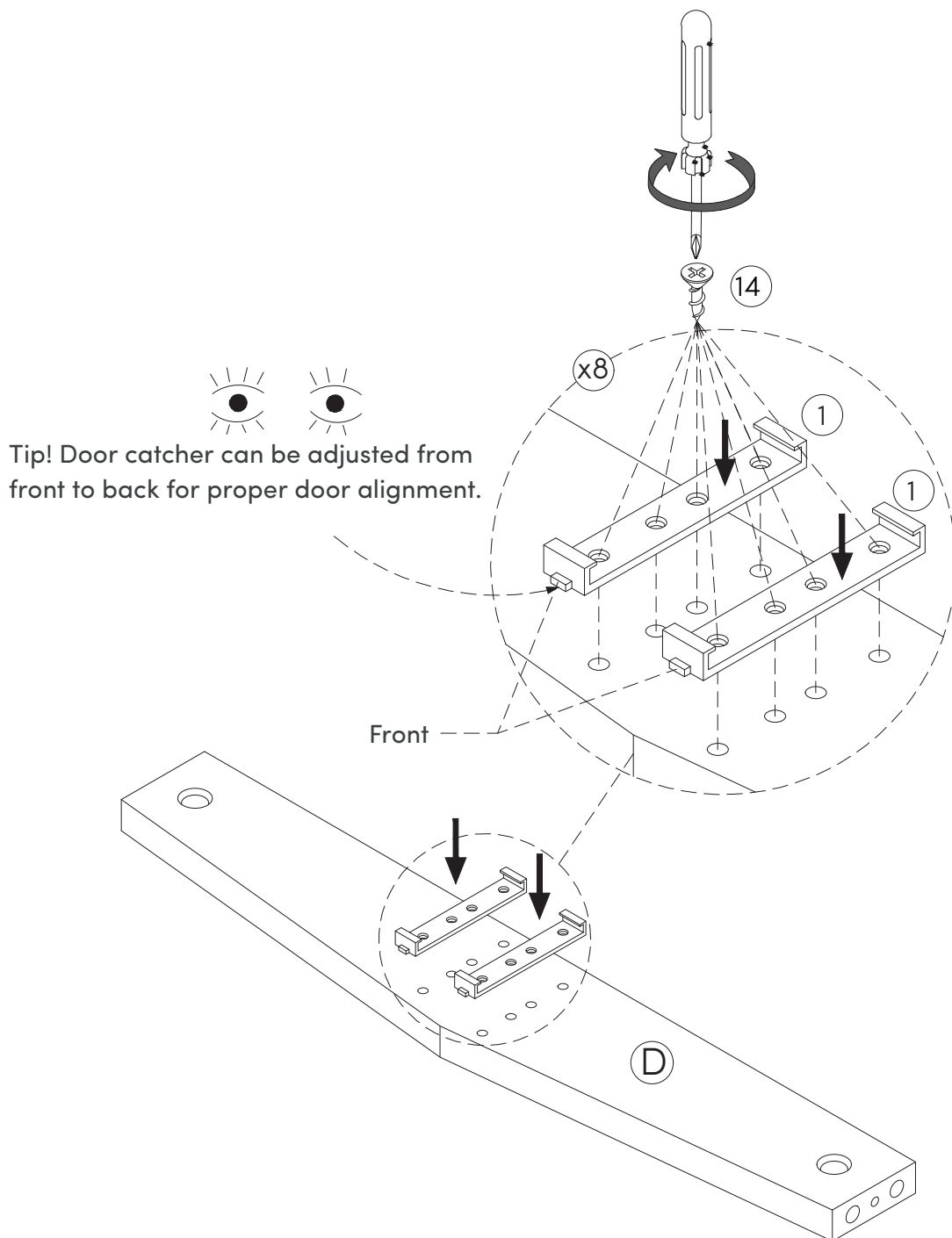
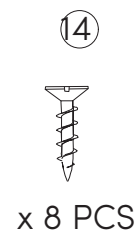
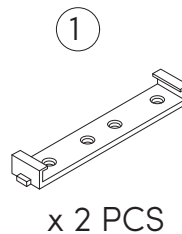
The goods



Step 1

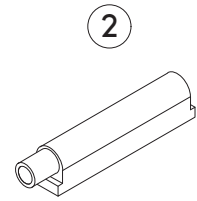
Let's get this thing fired up!

Attach the Push Latch Bracket (1) to the Top Front Rail (D) using the screw (14) as shown below.

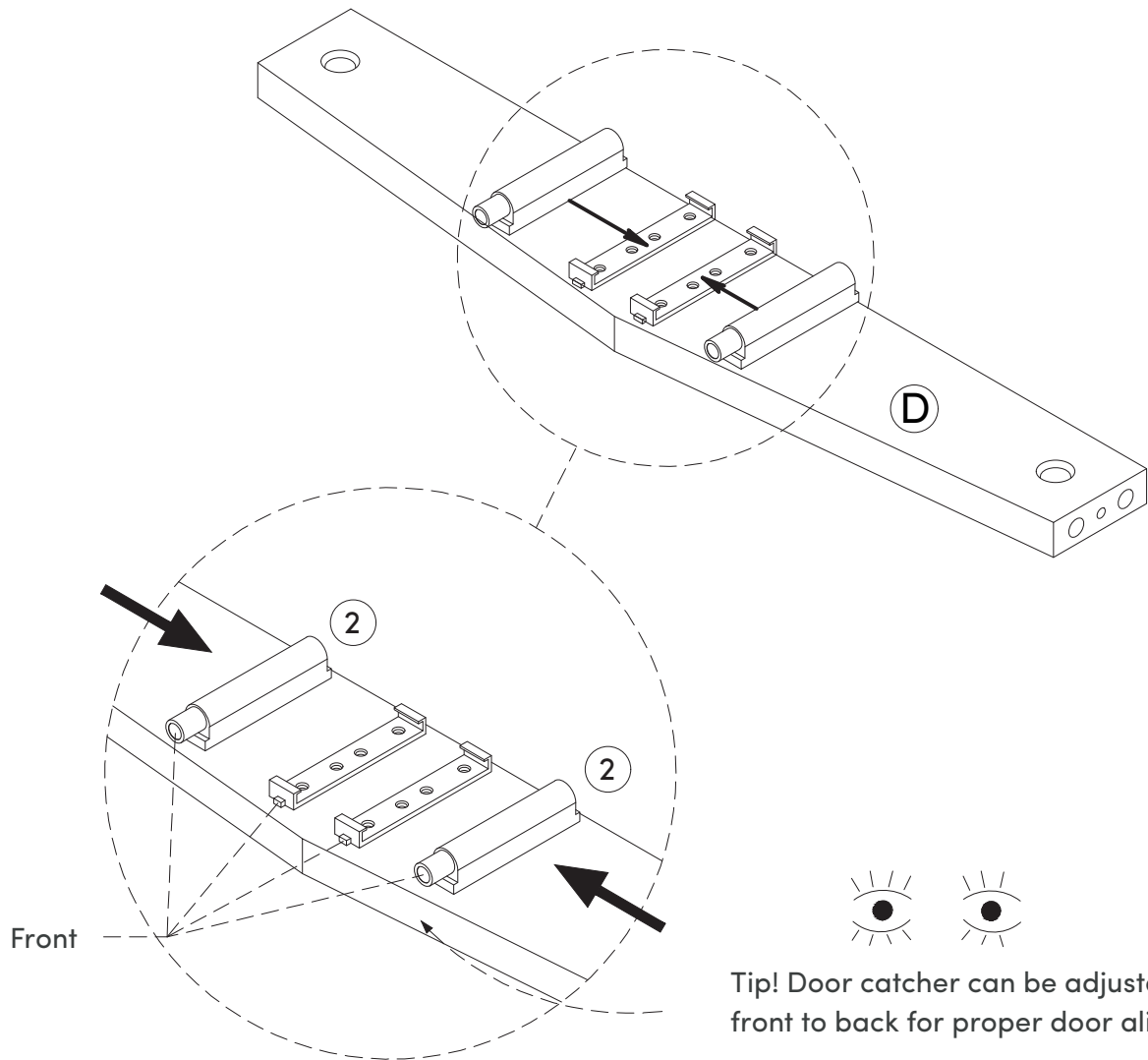


Step 2

Attach the Magnetic Push Latch (2) to the Push Latch Bracket (1) as shown below.



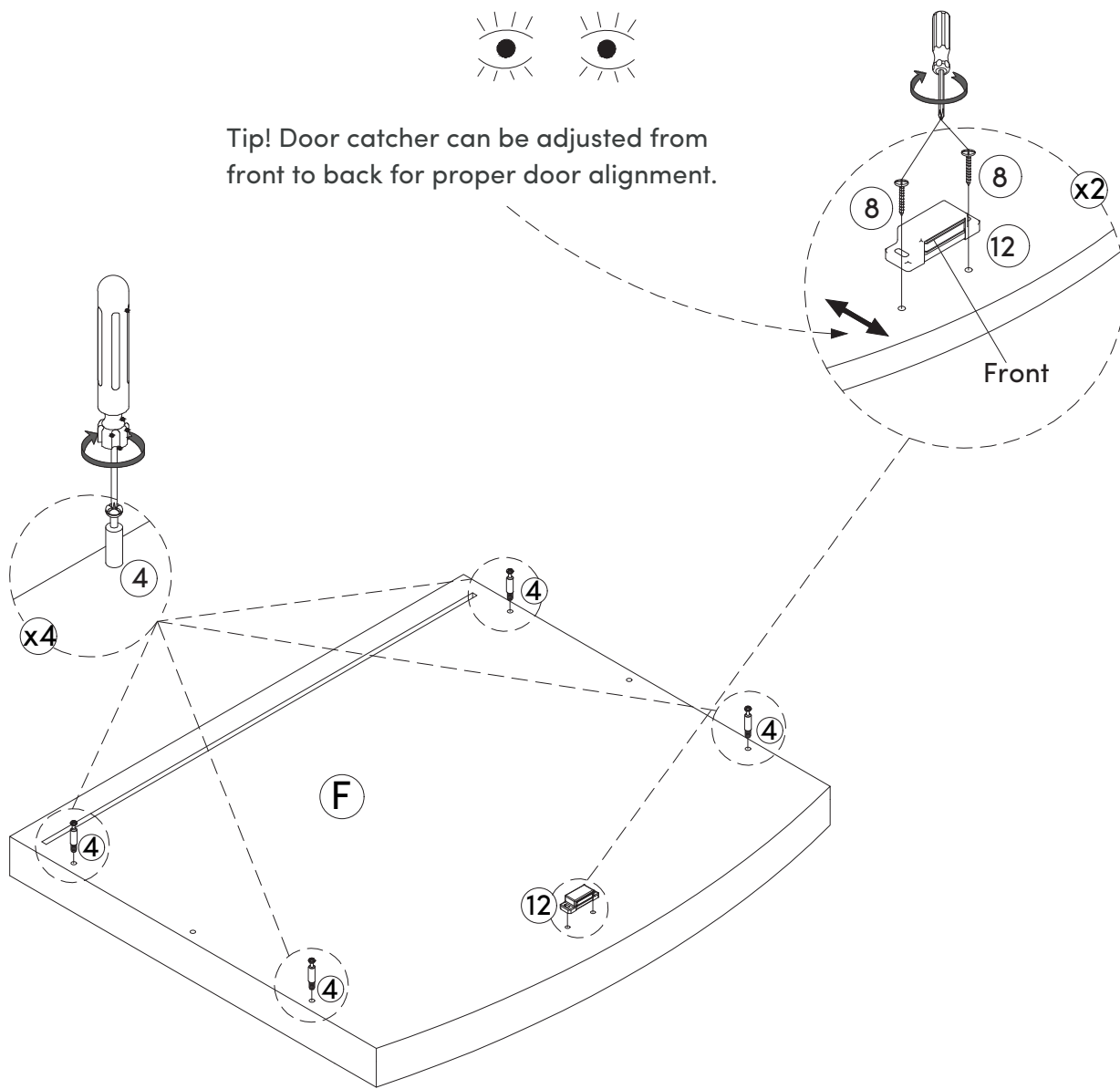
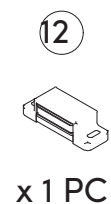
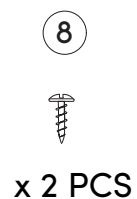
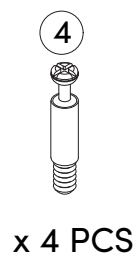
x 2 PCS



Step 3

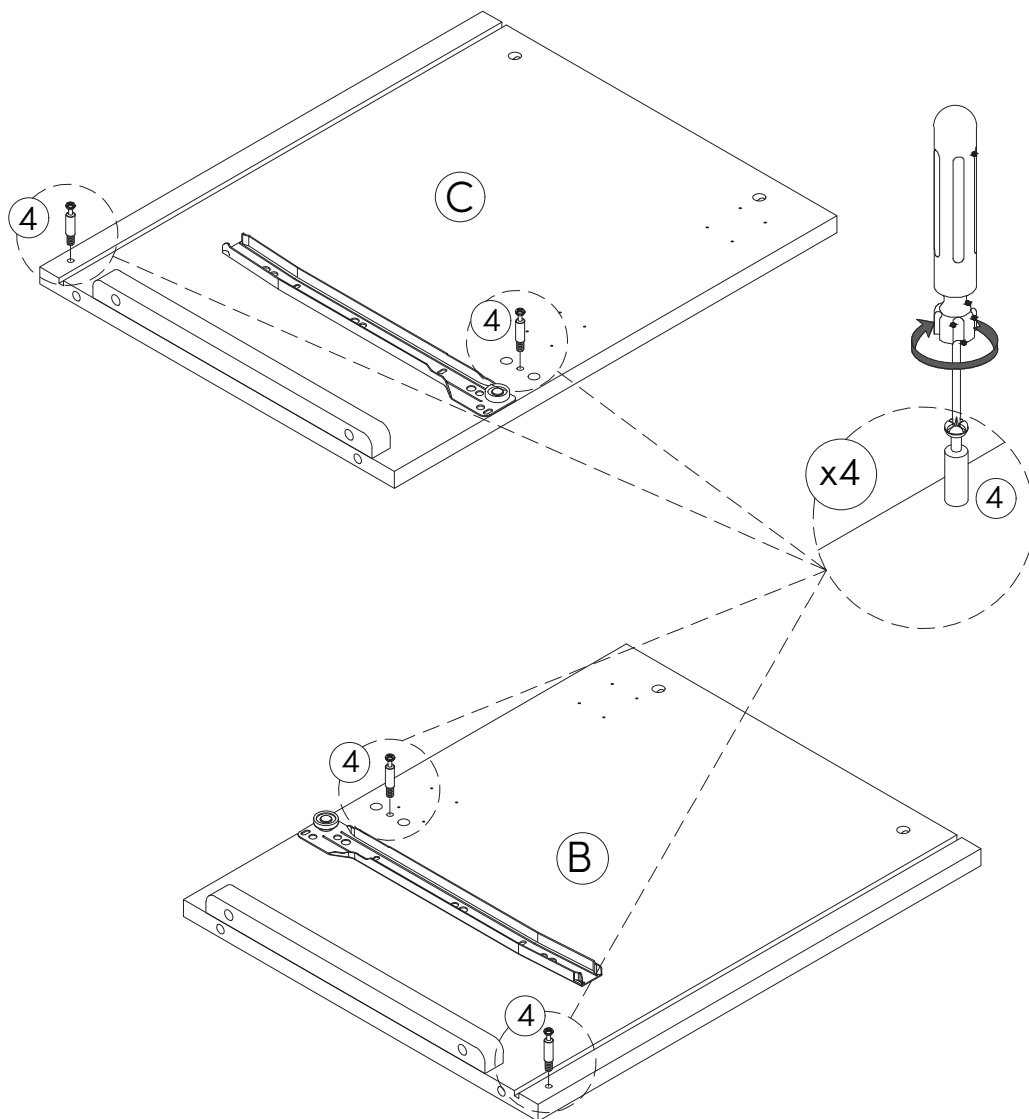
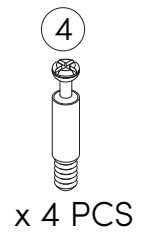
Screw the Cam Bolts (4) into the Bottom Panel (F) as shown below.

Next, attach the Magnetic Door Catch (12) to the Bottom Panel (F) using the screw (8).



Step 4

Screw the Cam Bolts (4) into the Right Side Panel (B) and Left Side Panel (C).



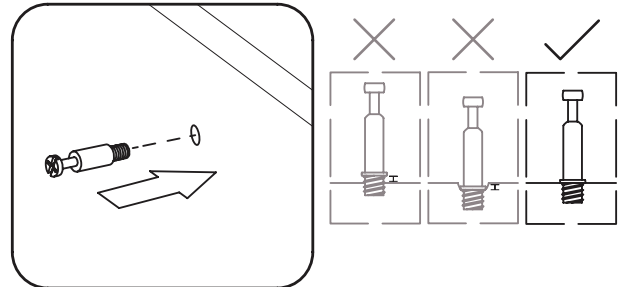
How to use cam locks

Did you know?

Cam locks are used to join two panels together, usually the edge of one to the flat side of another.

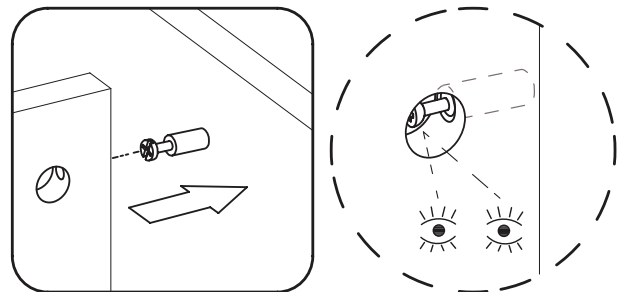
First, your cam bolt (or cam pin) will need to be properly inserted into the flat side of the board.

Important Note: Only tighten the cam bolt until it is secure. Do not over-tighten.



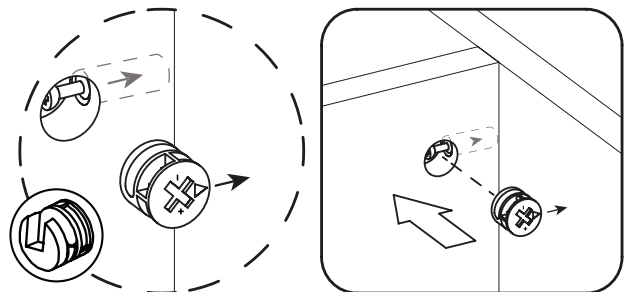
Next, you will fit the proper hole on the edge of the associated joining panel over the cam bolt.

Important Note: When installed properly, the head of the cam bolt will be visible through the larger hole on the side of the joining panel.



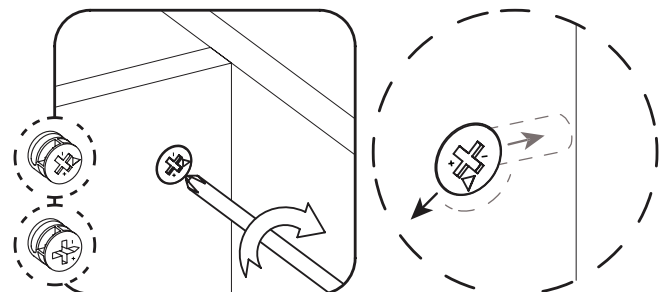
Next, you will notice the cam lock has a “C” shaped back. Commonly, an arrow on the front of the cam lock points in the same direction as the open section on back.

Using these as your cue, insert the cam lock into the large hole so the opening of the “C” fits over the head of the cam bolt.



Using a screwdriver, you will turn the cam lock until it stops, usually between 130° or 180°. You will feel the panels pulling closer until they are secured.

Important Note: Only turn the cam lock until the panels are fully engaged & feel secure. Turning too far may lead to hardware failure



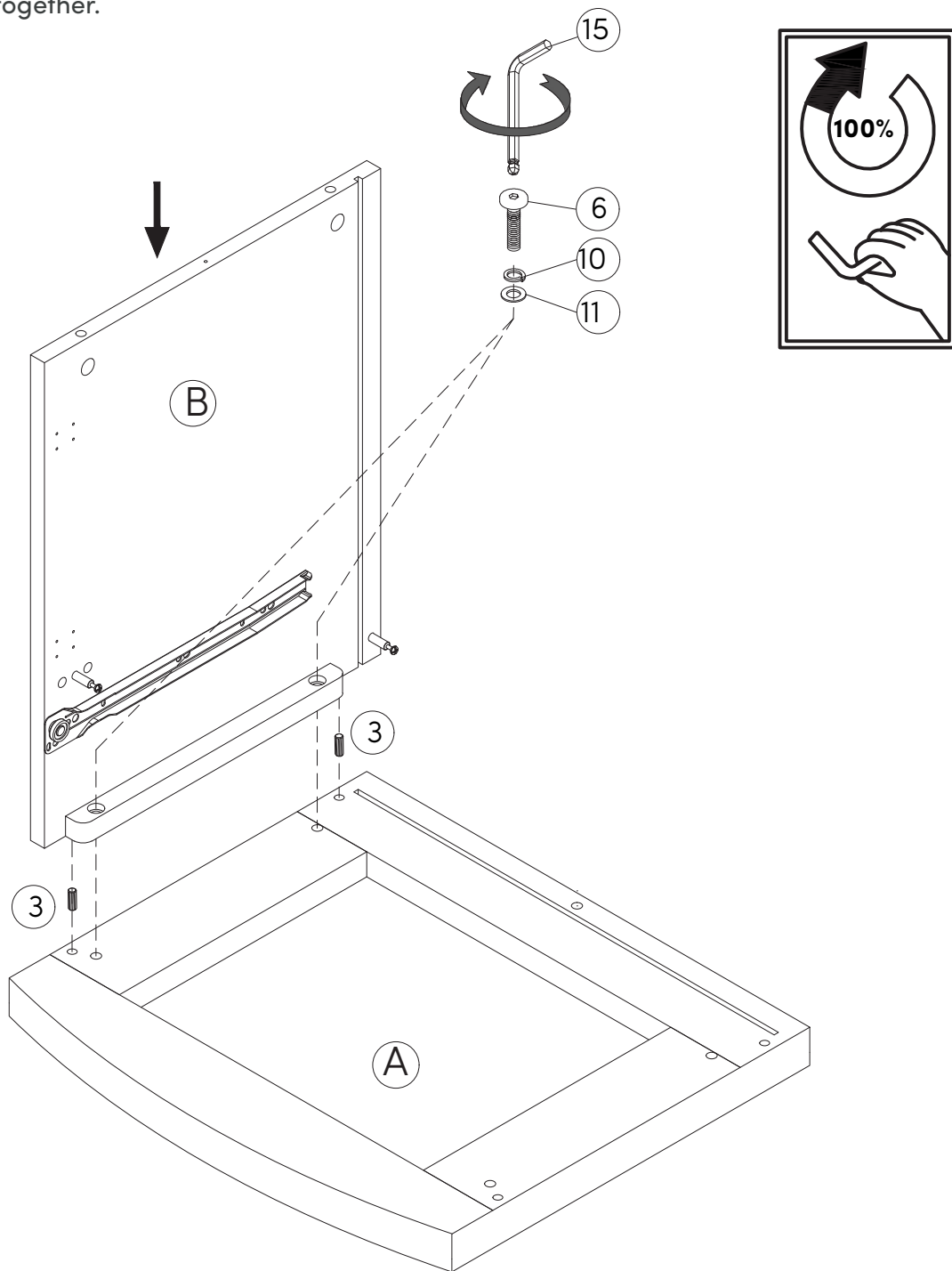
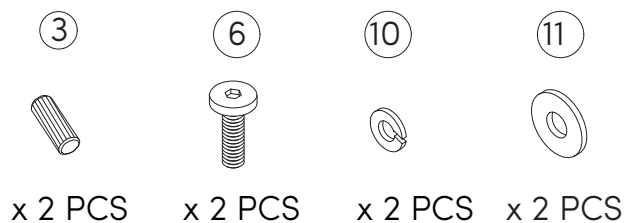
Still having issues?

If a cam lock seems to be spinning in place or is not “catching” or pulling the panels together as expected, first remove the cam lock & try again while making sure that everything is properly positioned & oriented.

If you are still having issues getting things work ing as expected, first remove the cam lock then unscrew the cam bolt slightly (less than 1 complete turn) to see if that helps with the alignment of the cam lock & bolt.

Step 5

Now attach the Right Side Panel (B) to the Top Panel (A). Secure in place using the Wooden Dowels (3), then slide the Spring Washer (10) and the Flat Washer (11) on to the Bolts (6). Use these parts and the Allen Key (15) to secure the Right Side Panel and Top Panel together.



Step 6

Insert two Wooden Dowels (3) into the Right Side Panel (B). Now place the Top Front Rail (D) onto the Wooden Dowels (3). Make sure to line things up as shown below.

Finally, use the Cam Lock (5) to secure the Top Front Rail (D).

③

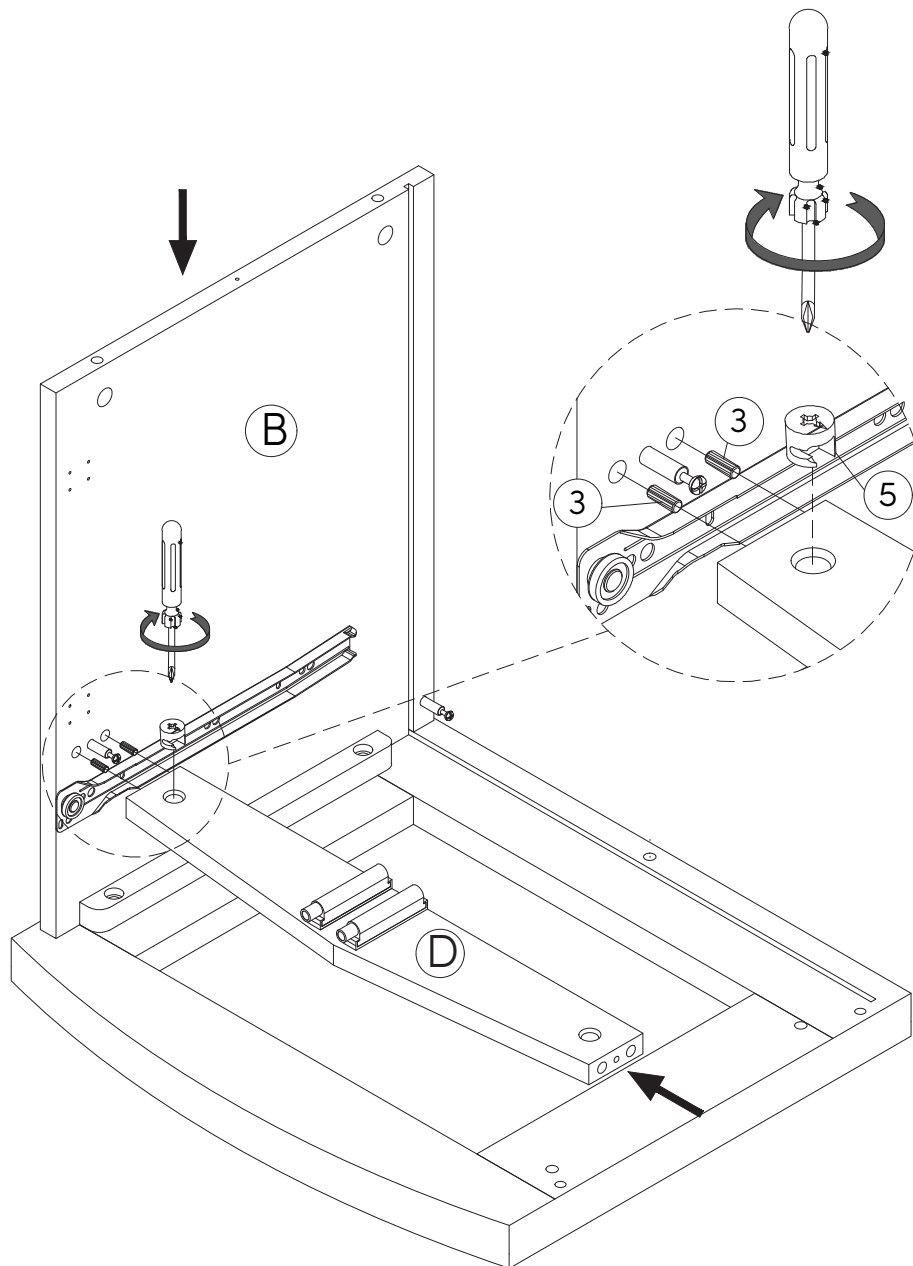


x 2 PCS

⑤



x 1 PC



Step 7

Now insert two Wooden Dowels (3) into the Top Front Rail (D) and two Wooden Dowels (3) into the Top Panel (A). Then attach the Left Side Panel (C). Make sure to line things up as shown below.

Finally, use the Cam Lock (5) to secure the Top Front Rail (D) to the Left Side Panel (C).

③

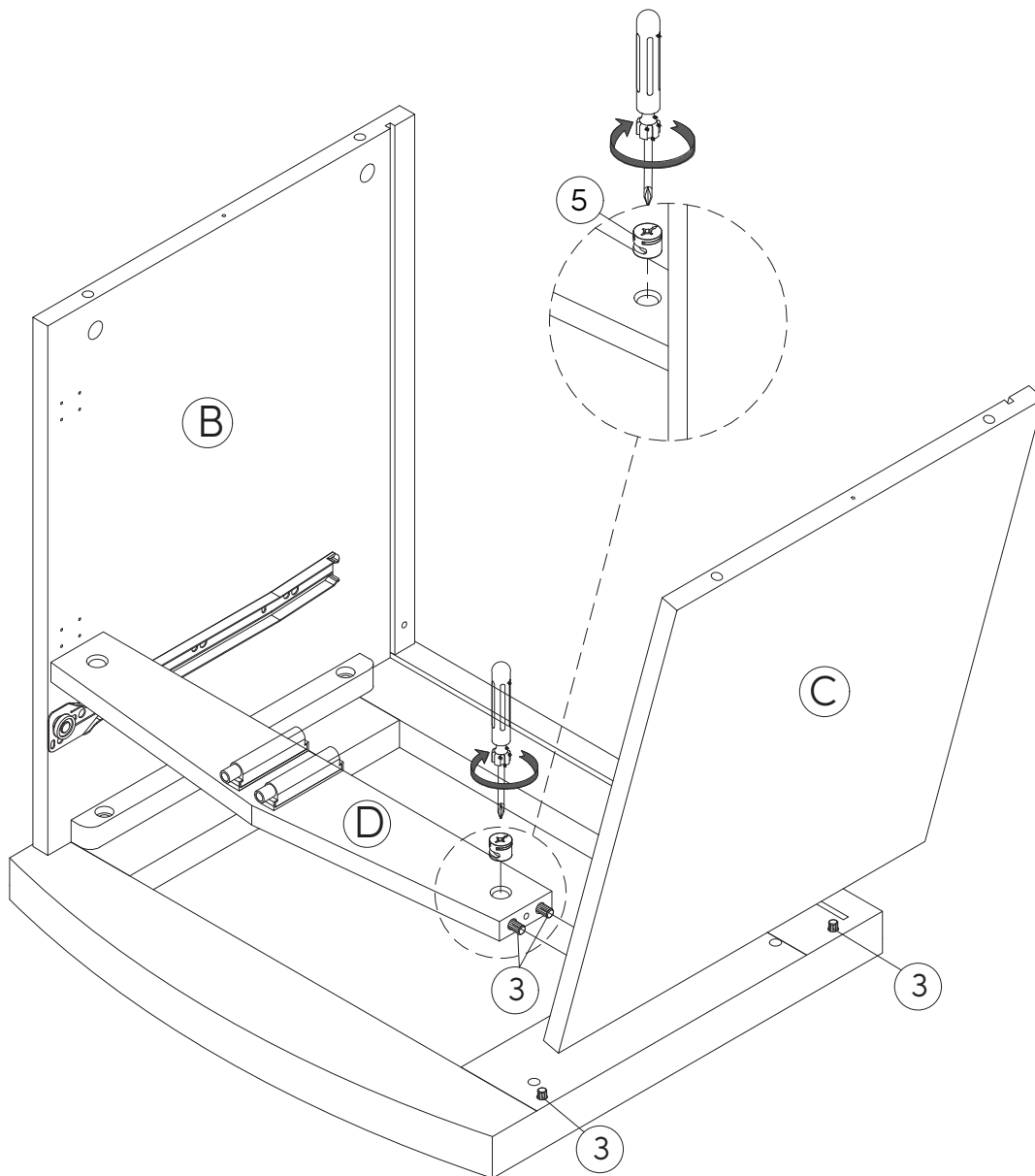


x 4 PCS

⑤

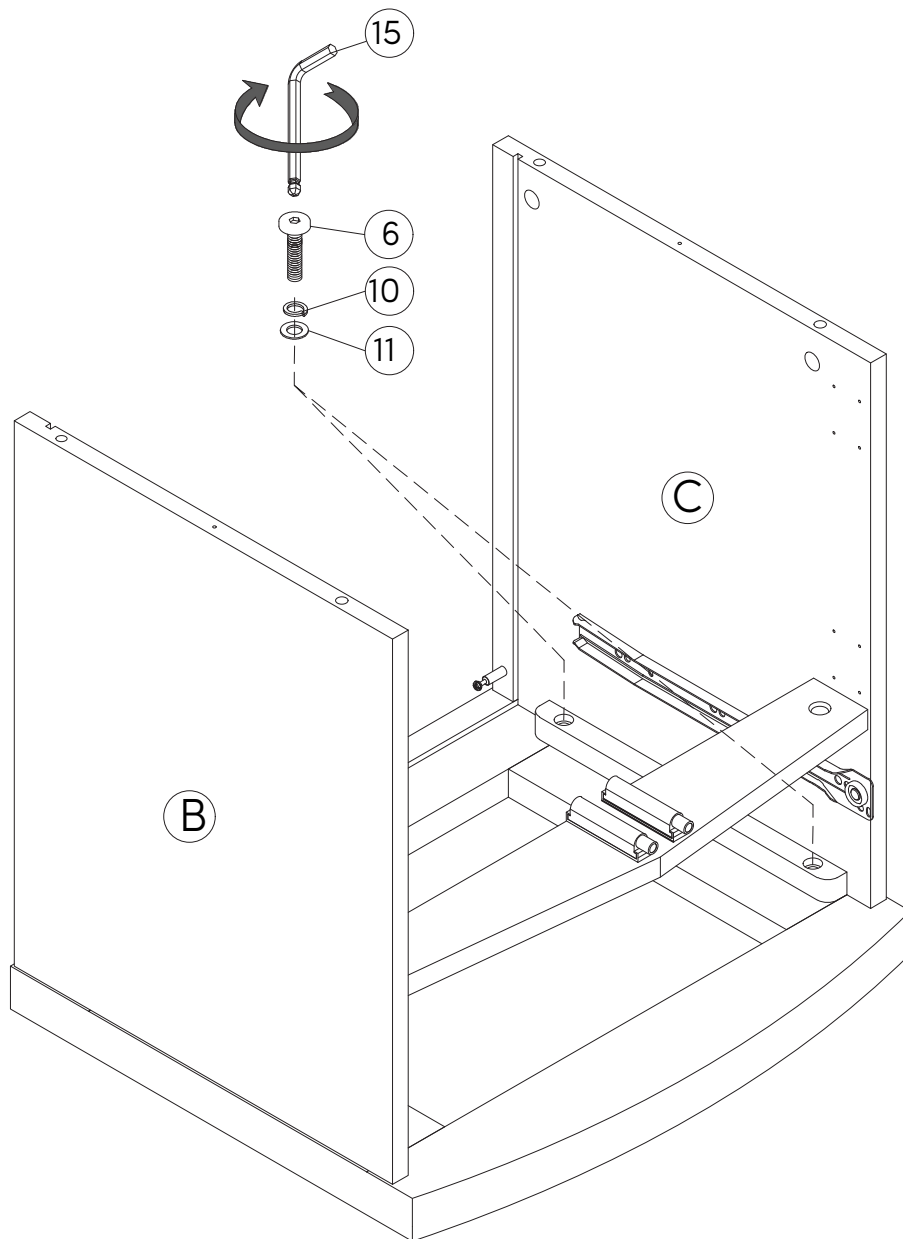
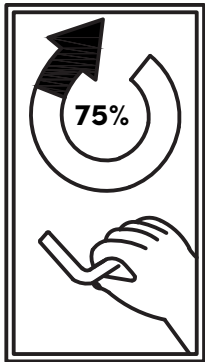
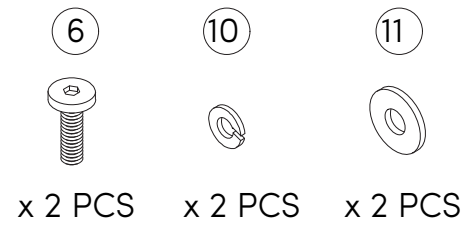


x 1 PC



Step 8

Slide the Spring Washer (10) and the Flat Washer (11) onto the Bolts (6). Use these parts and the Allen Key (15) to secure the Left Side Panel (C) and Top Panel together.



Step 9

Okay, time to attach the Top Back Rail (E) onto the Left Side Panel (C) and Right Side Panel (B). Make sure to line things up as shown below.

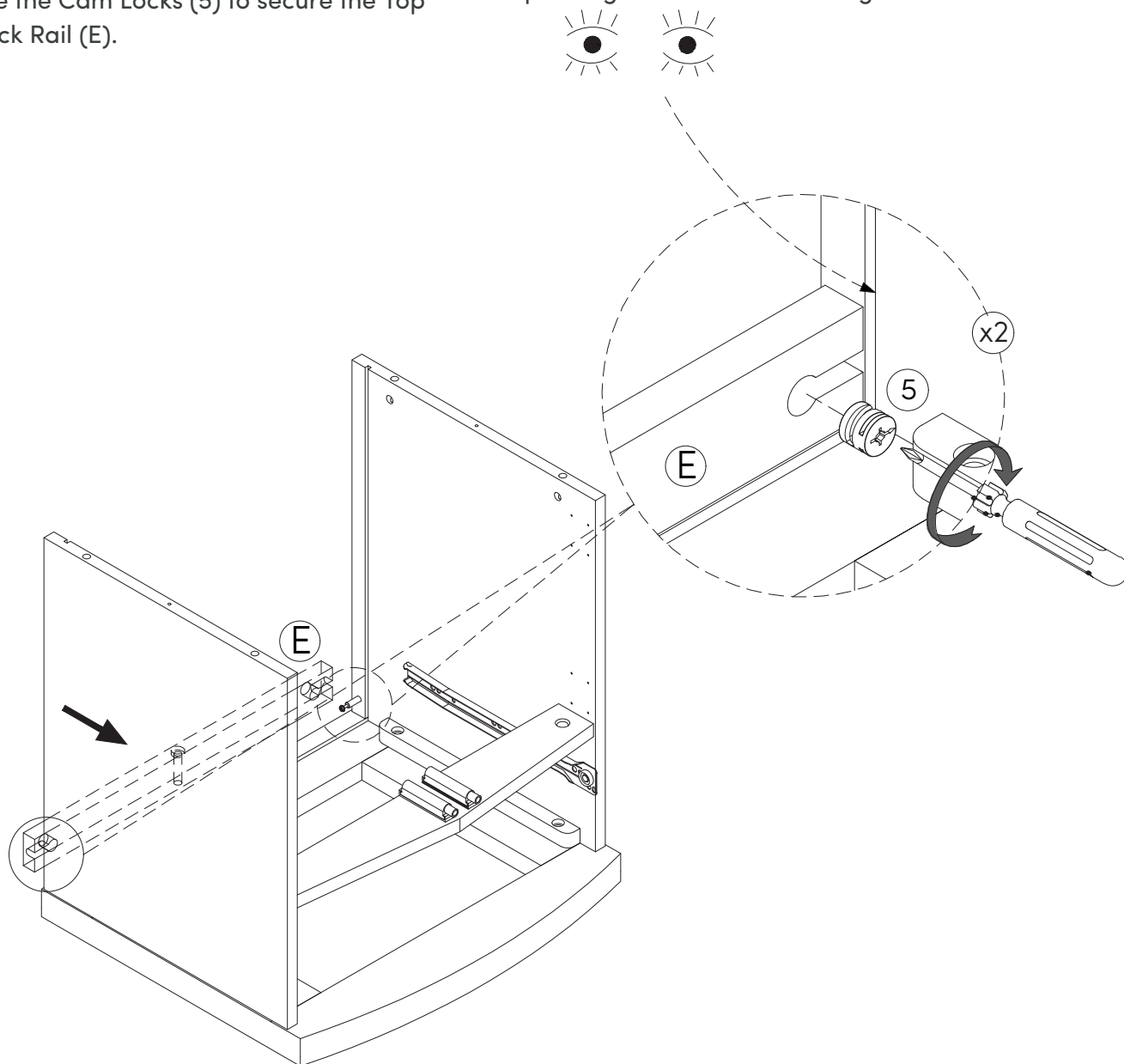
Use the Cam Locks (5) to secure the Top Back Rail (E).

Tip! The grooves need to be aligned

⑤

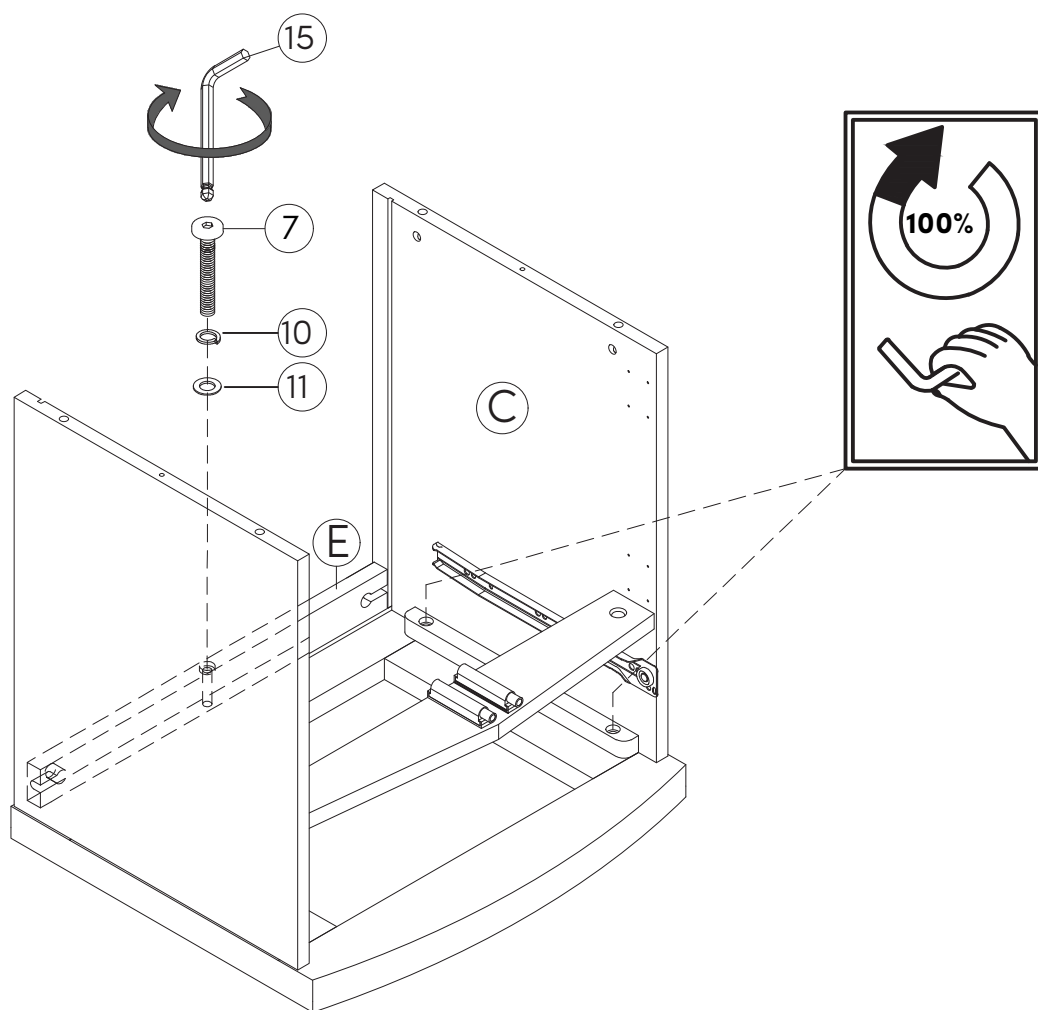
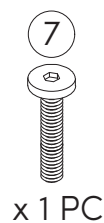


x 2 PCS



Step 10

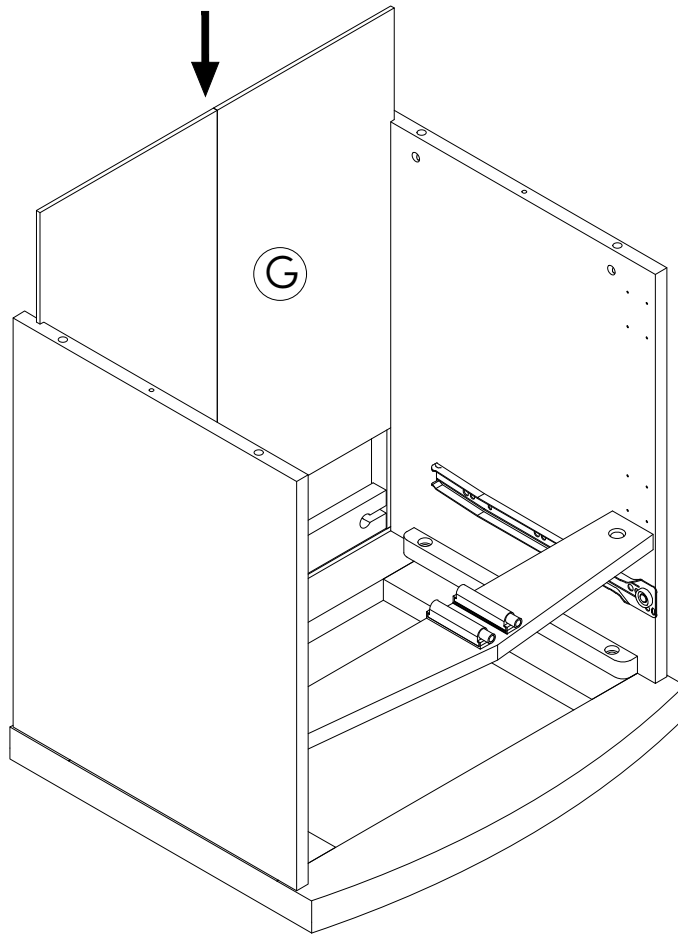
Next, slide the Spring Washer (10) and the Flat Washer (11) on to the Bolts (7). Use these parts and the Allen Key (15) to secure the Back Top Rail (E) and Top Panel together.



Step 11

Unfold the Back Panel (G) and slide it into place on the nightstand.

It should fit smoothly into the grooves.



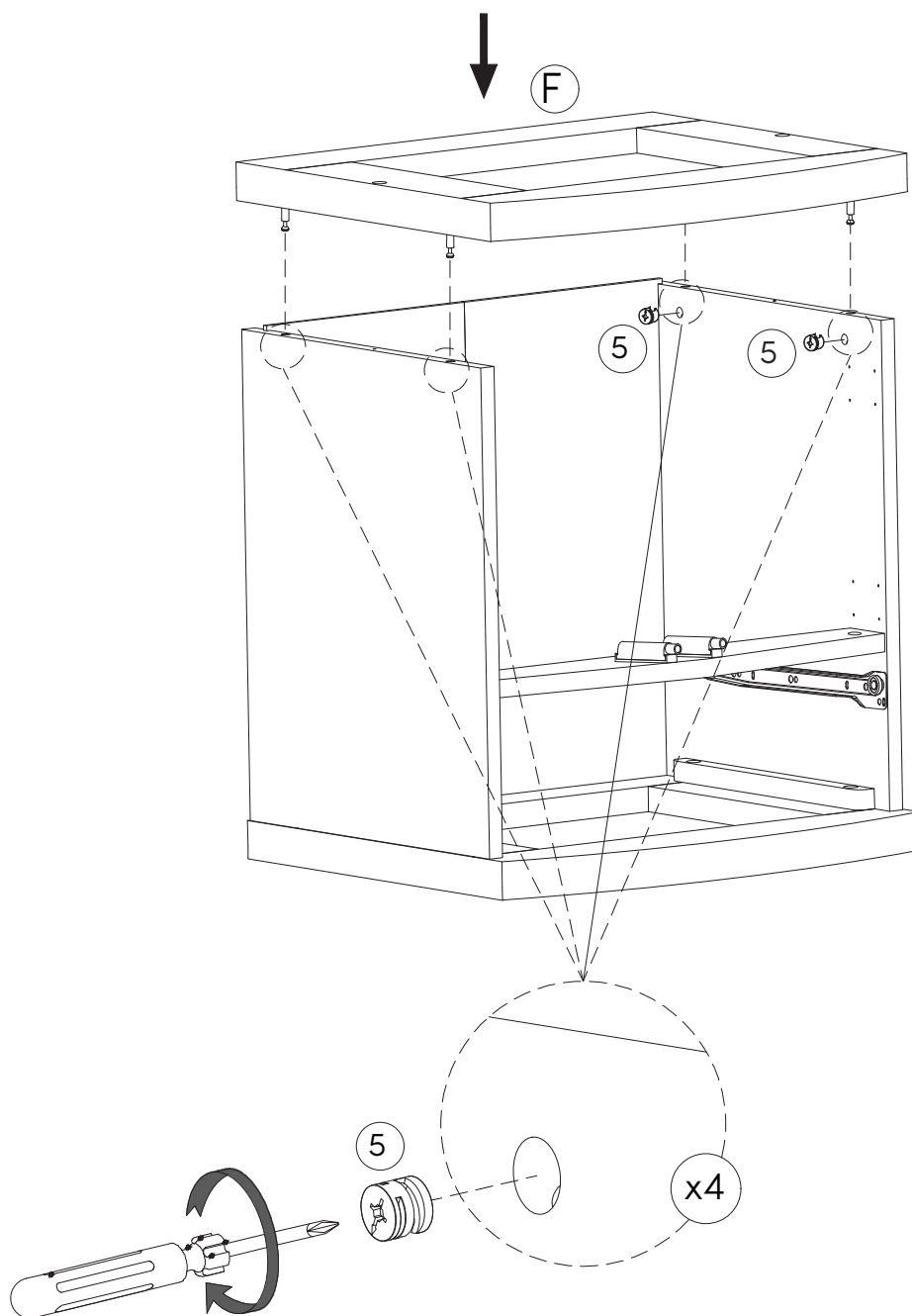
Step 12

Now place the Bottom Panel (F) after screwing in the Cam Bolts from Step 2 onto the nightstand. Secure it in place using the Cam Locks (5).

⑤



x 4 PCS



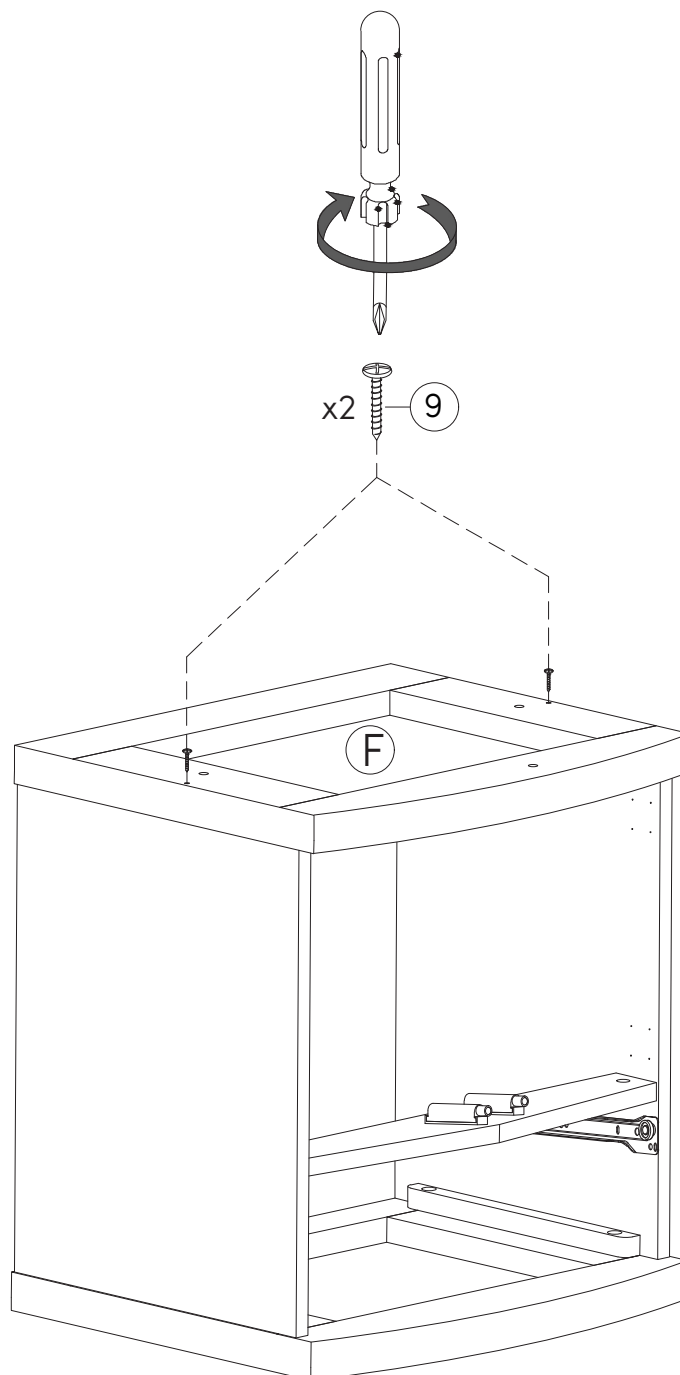
Step 13

Secure the Bottom Panel (F) in place by tightening it with the Screws (9).

9

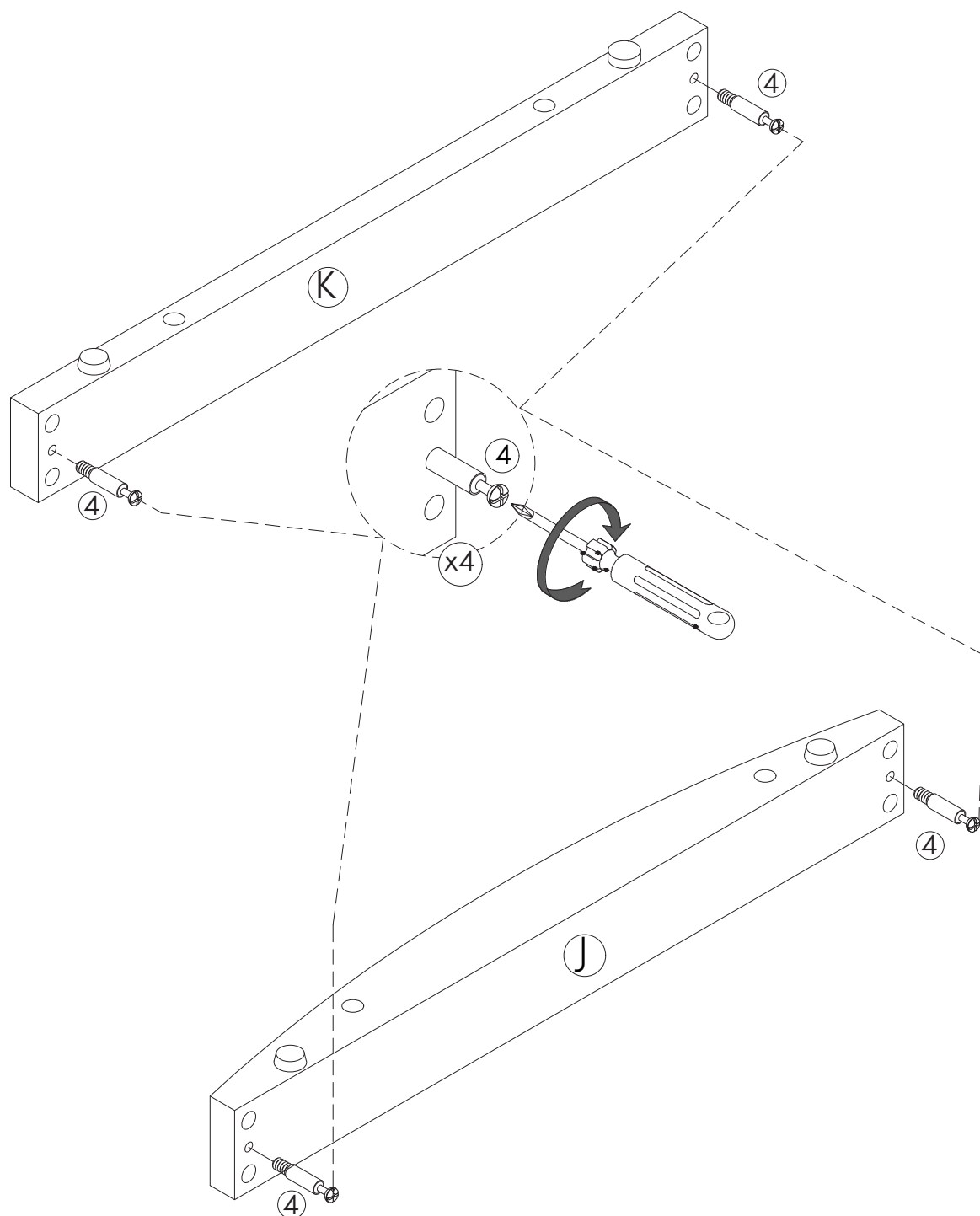
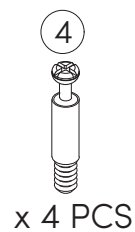


x 2 PCS



Step 14

Okay, time to attach the Base Frame!
First, screw the Cam Bolts (4) onto the
Base - Front Panel (J) and Base - Back
Panel (K).



Step 15

Next, attach the Base Side Panel (L) to the Base- Front Panel (J) using the Wooden Dowels (3). Secure in place using the Cam Locks (5).

③

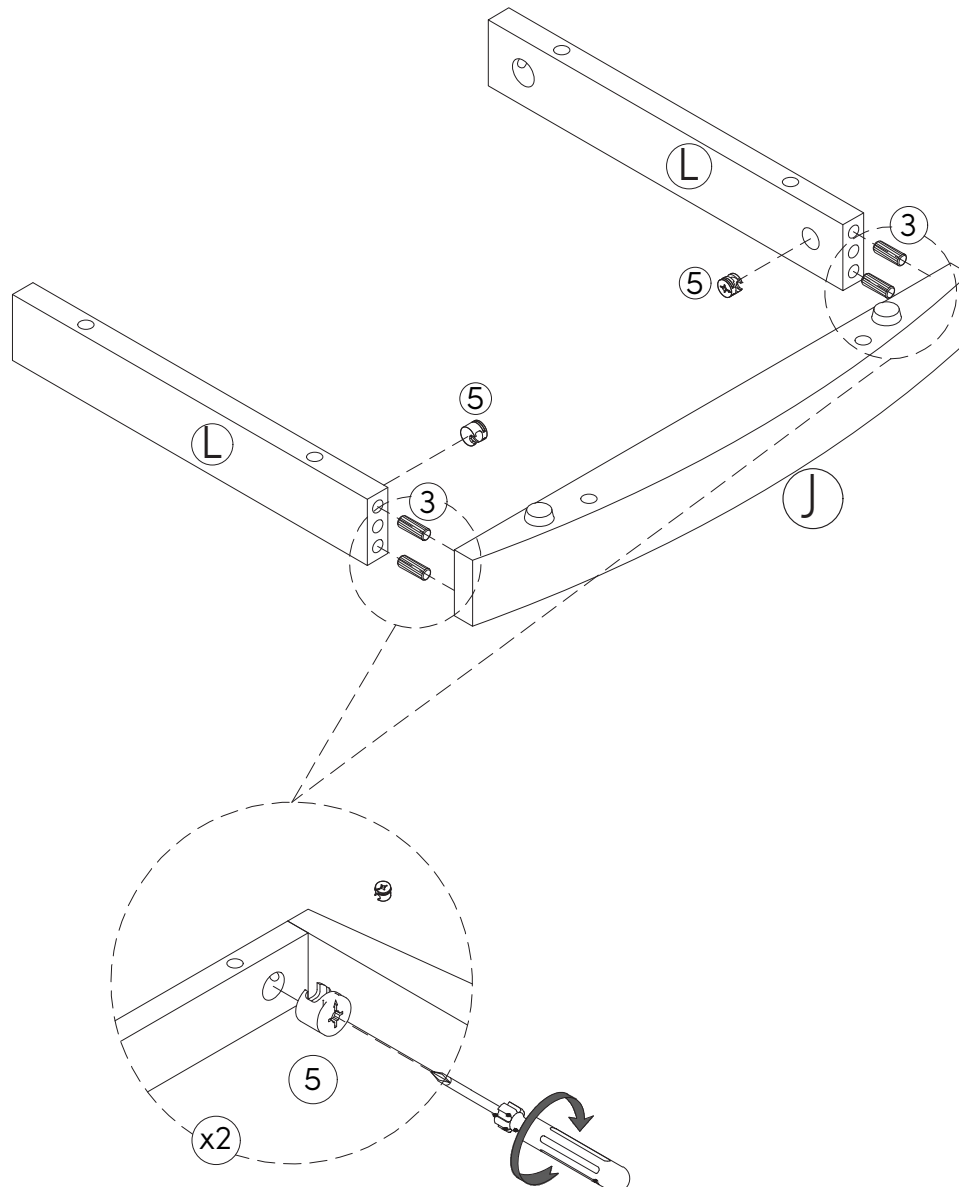


x 4 PCS

⑤



x 2 PCS



Step 16

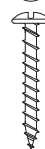
Attach the pieces you assembled in Step 15 to the Nightstand use the Wooden Dowels (3) and secure into place using the Screw (9).

3

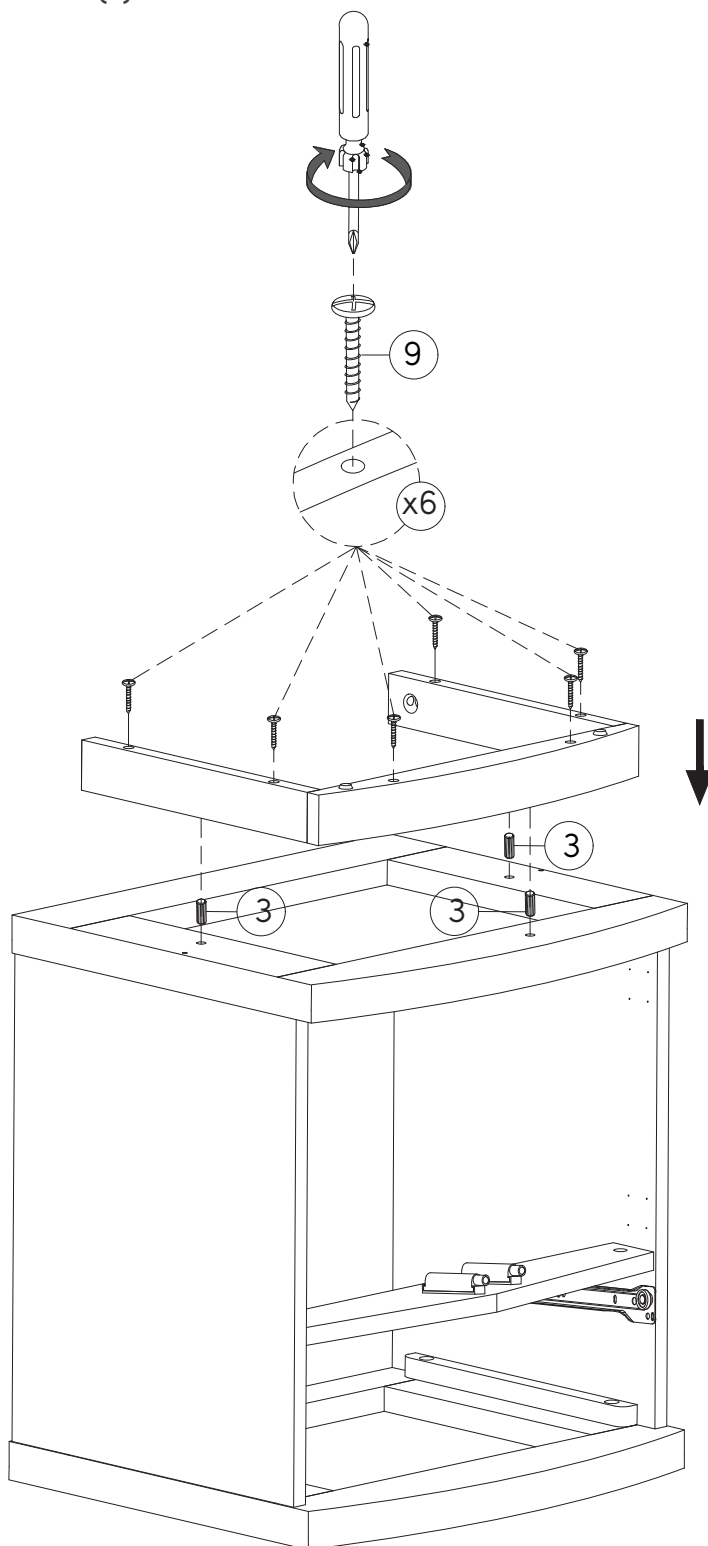


x 3 PCS

9



x 6 PCS



Step 17

Insert four Wooden Dowels (3) into the Base - Side Panel (L). Now place the Base - Back Panel (K) onto the Wooden Dowels (3). Make sure to line things up as shown below.

Then use the Cam Locks (5) to secure the Base - Back Panel (K).

③

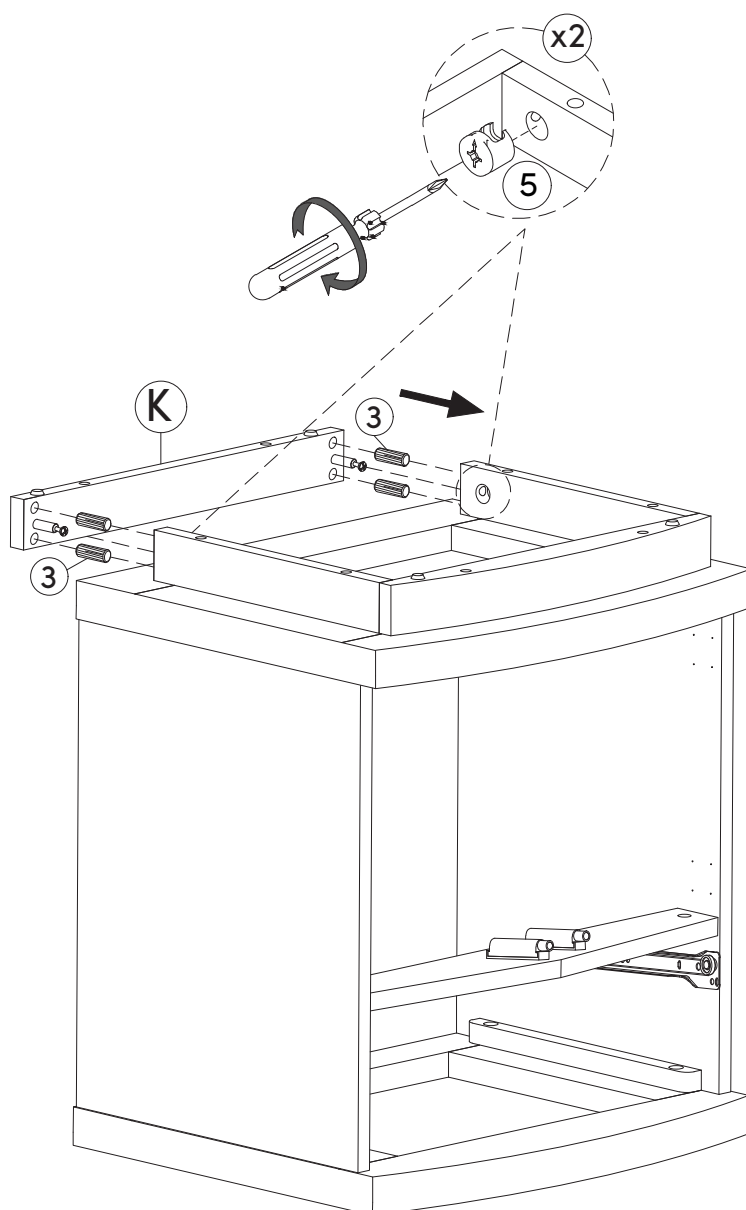


x 4 PCS

⑤

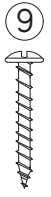


x 2 PCS

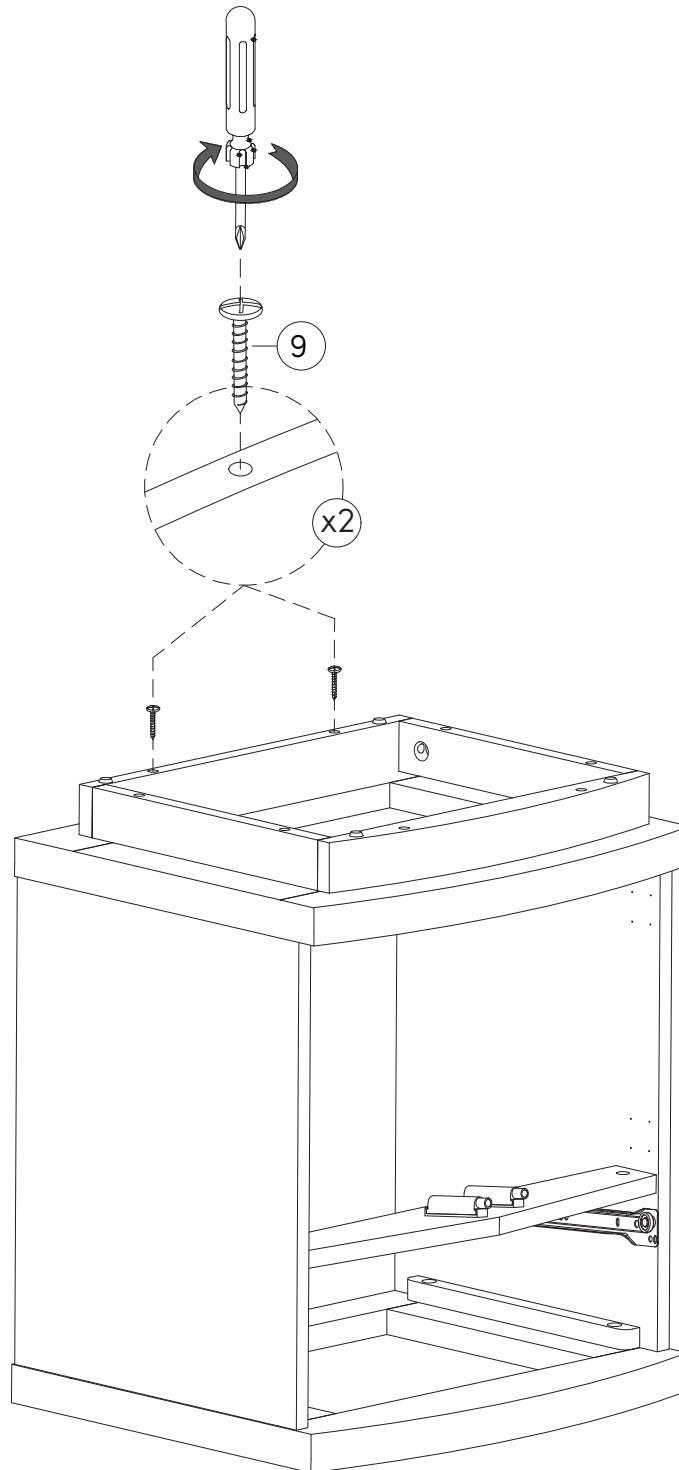


Step 18

Secure Base - Back Panel in place using the Screws (9).



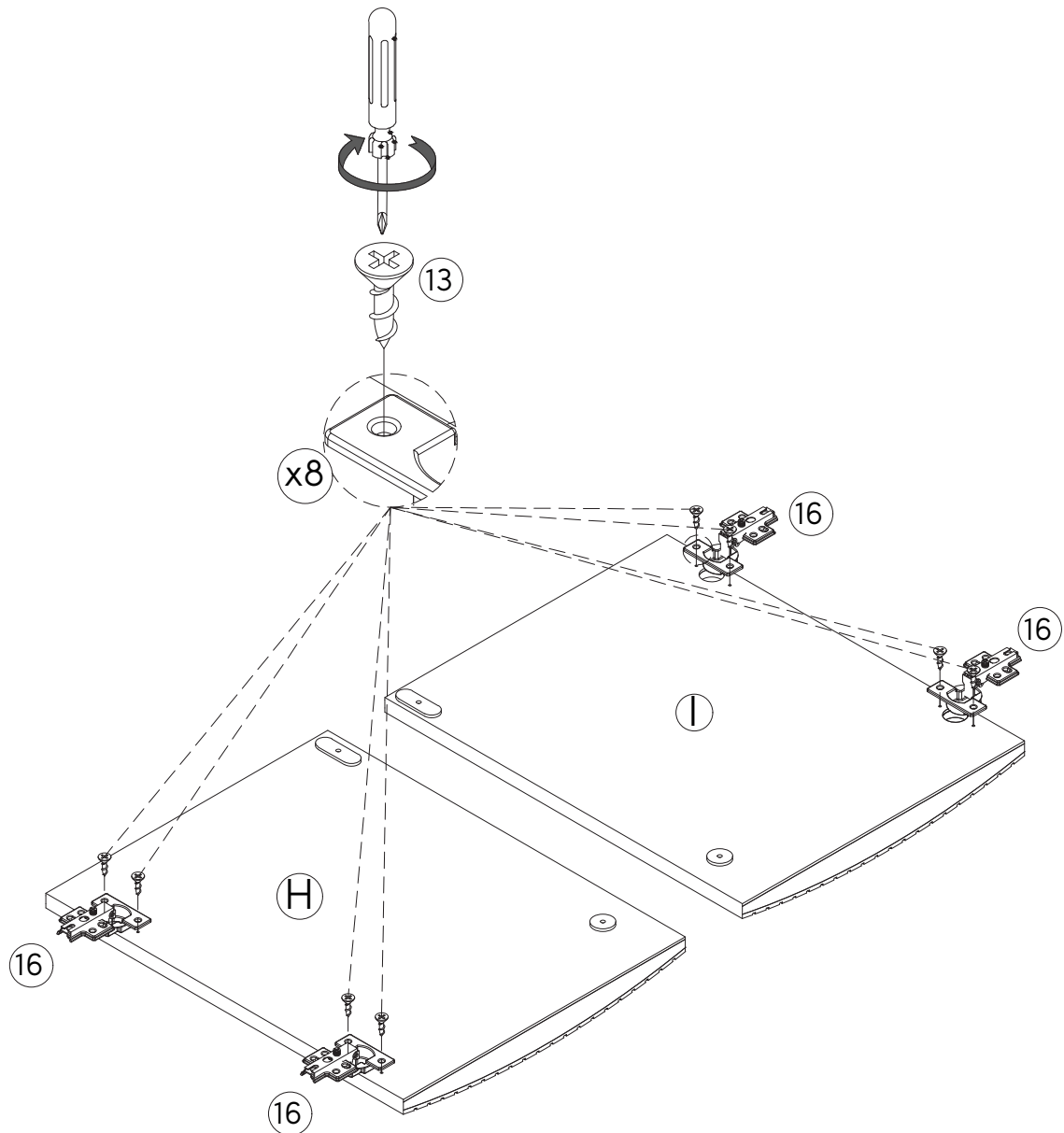
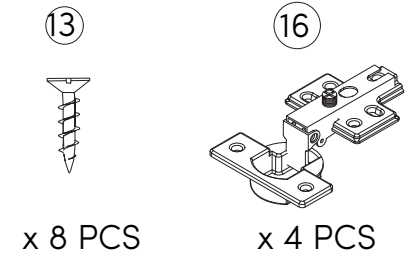
x 2 PCS



Step 19

Let's get started on the doors!

Attach the Hinges (16) to the doors using two of the Screws (13) per hinge.



Step 20

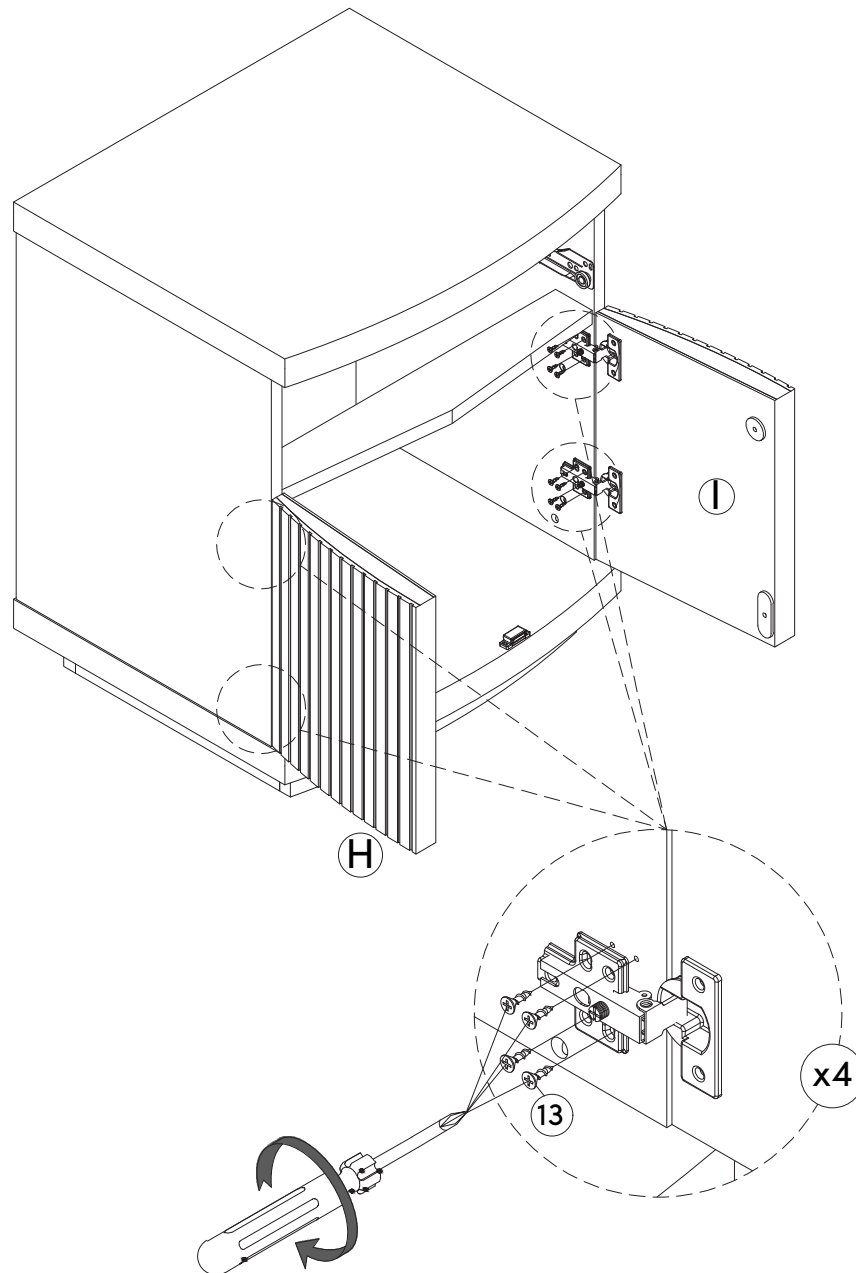
Time to get out those muscles! Flip the unit upright (you might need a friend for this) and then it's time to attach the doors! Attach the doors (H)(I) by securing the Hinges (16) to the Nightstand using the Screws (13).

You'll need four screws per hinge.

13



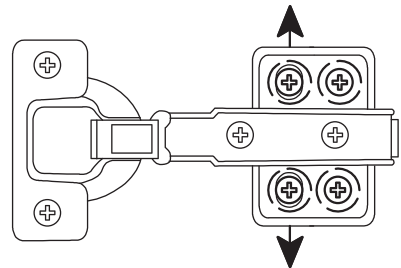
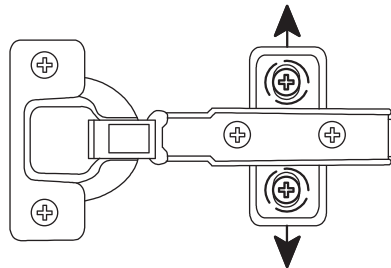
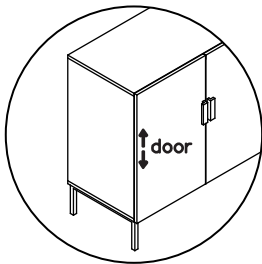
x 16 PCS



Is your cabinet door looking crooked or unevenly spaced?

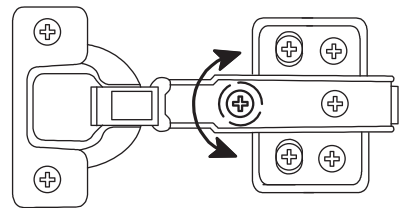
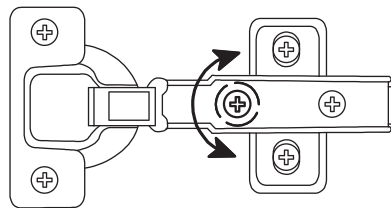
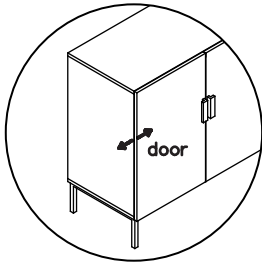
Then you've come to the right place. Follow the illustrations below to get your cabinet door aligned and ready for action.

If your door is too low or too high...



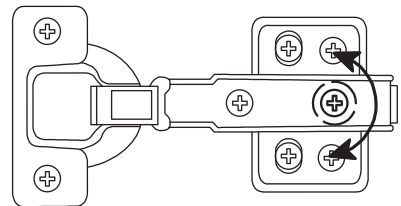
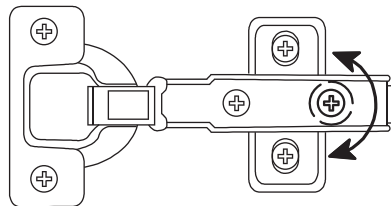
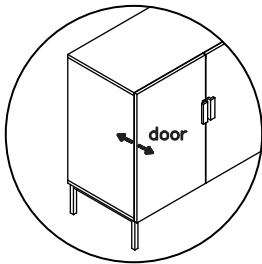
Loosen the height screws, then move the door up or down to make it level.

If the space between your doors is off...



Loosen the side-to-side screws, then screw counter-clockwise to make the gap wider or clockwise to close any gaps.

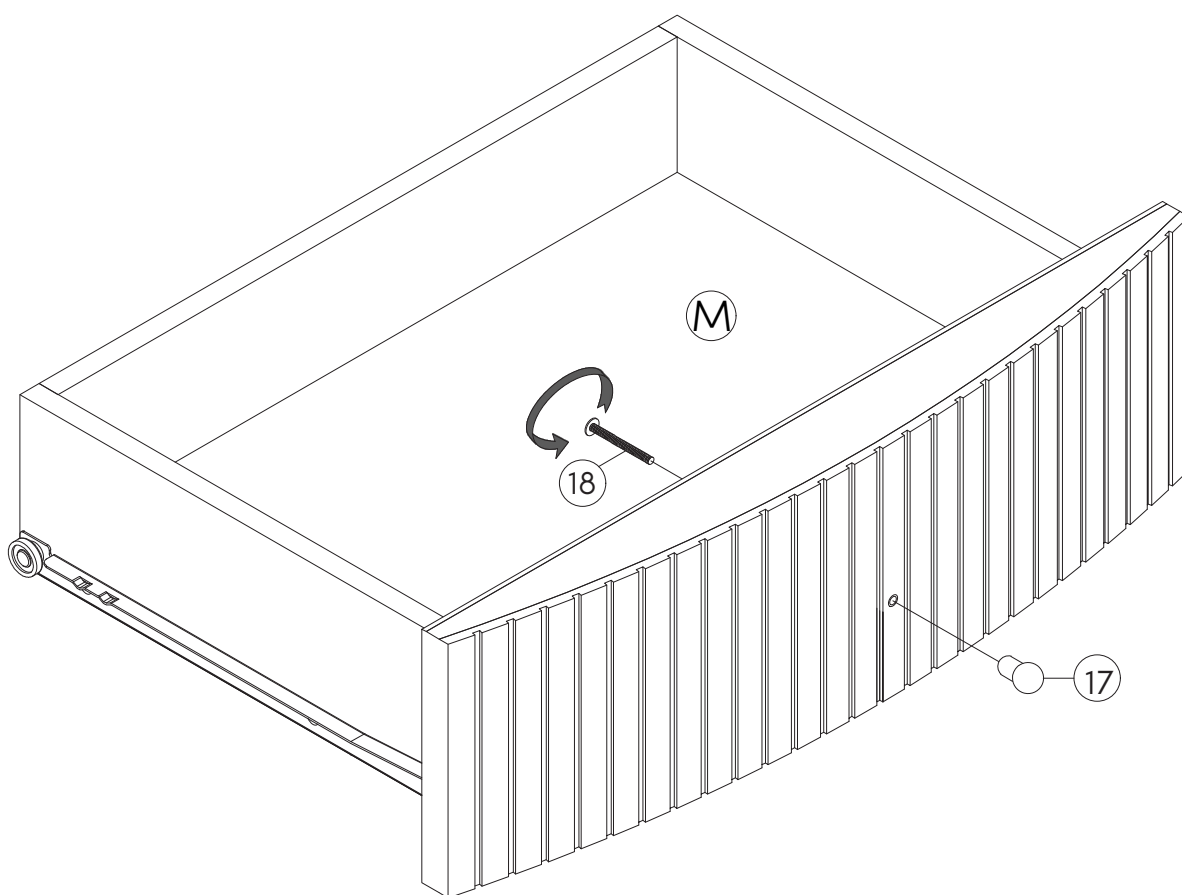
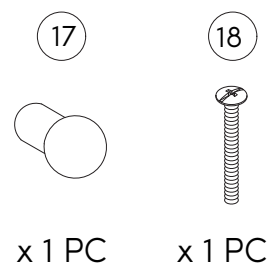
If you need to adjust the depth of the doors...



Adjust the in-and-out screws until the door is aligned with the side of the cabinet.

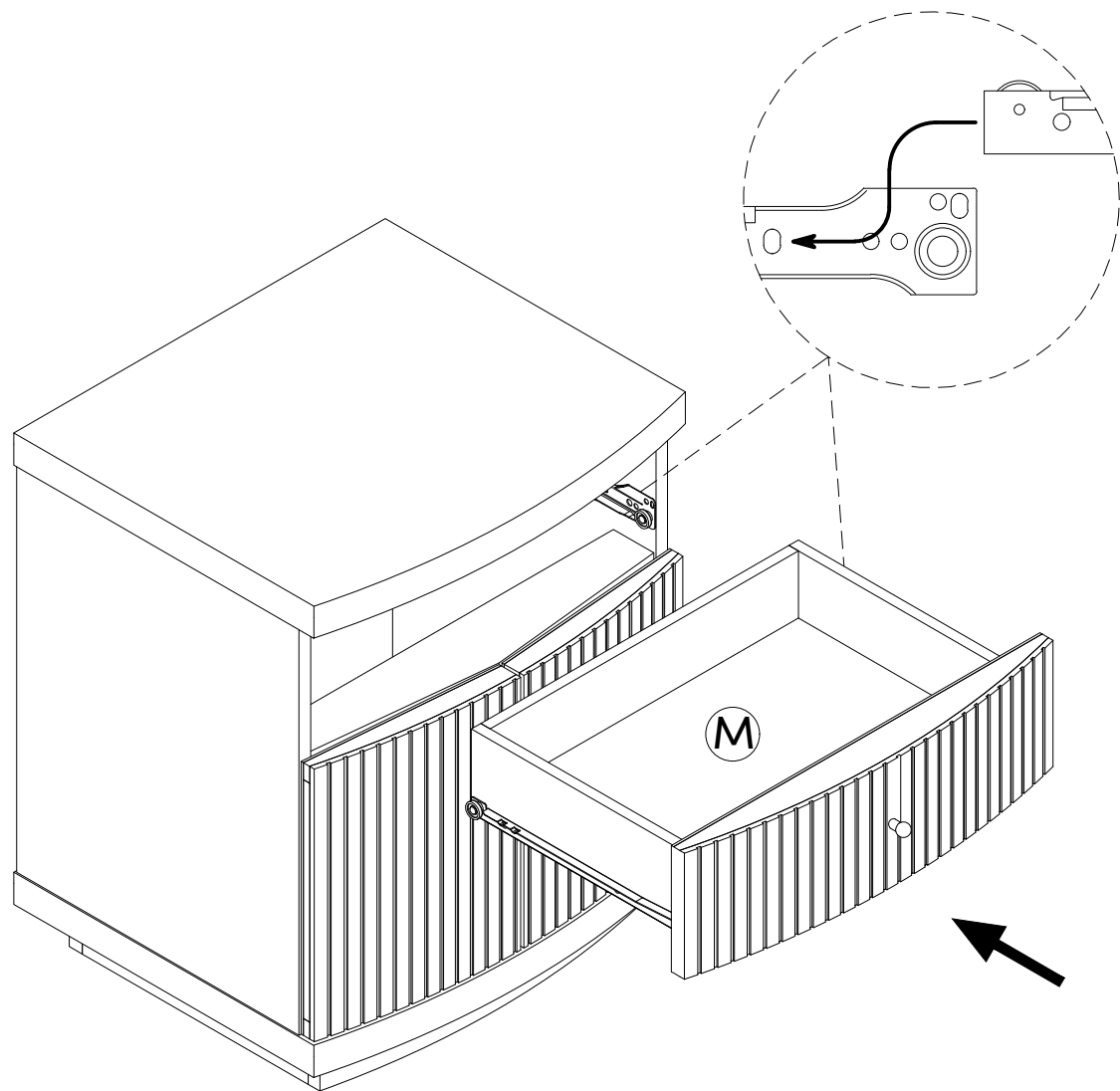
Step 21

Attach the Handle (17) onto the Drawer (M).
Secure it using the Hex Button Head Bolts (18).

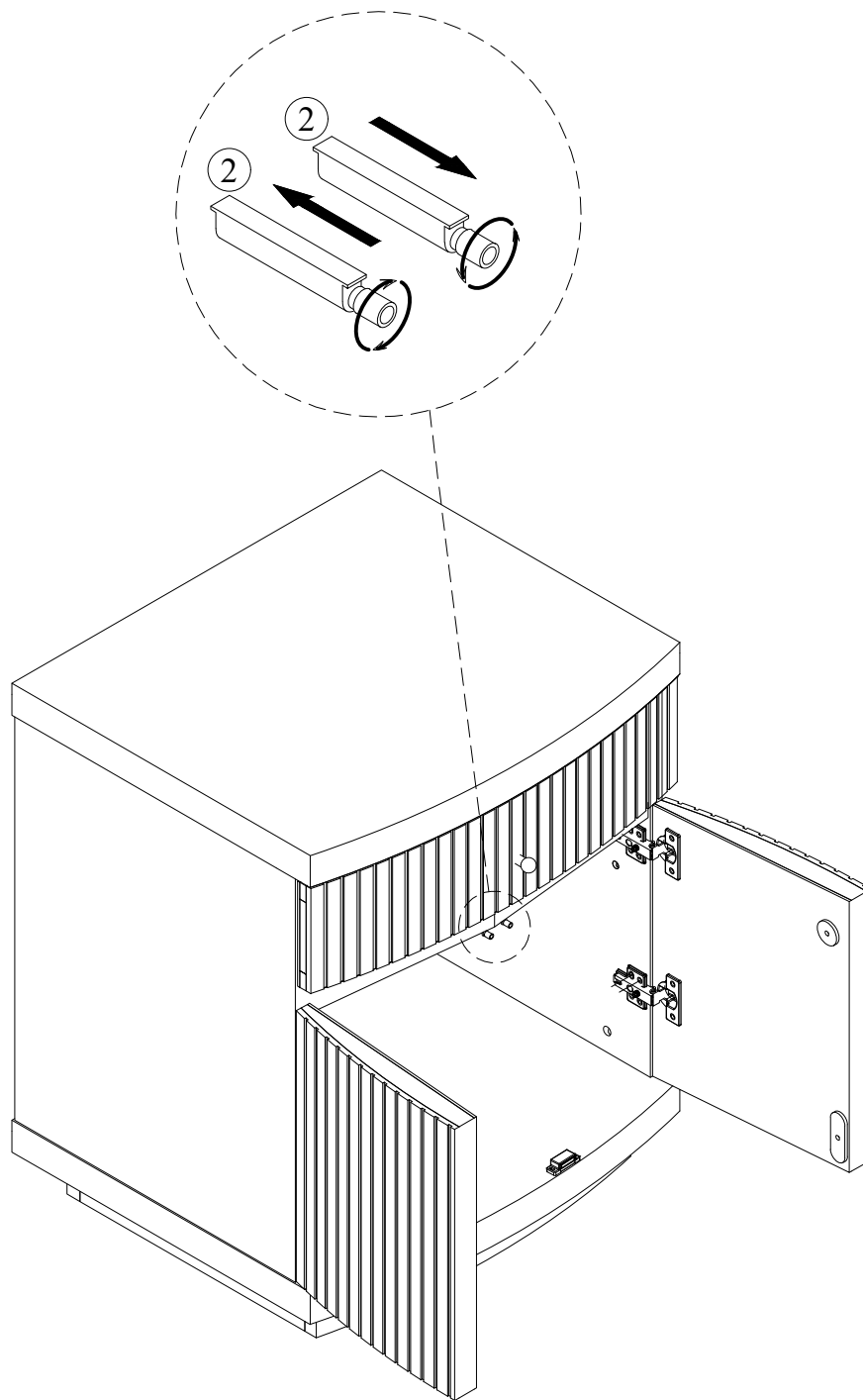


Step 22

Insert the Drawer (M) into the nightstand.

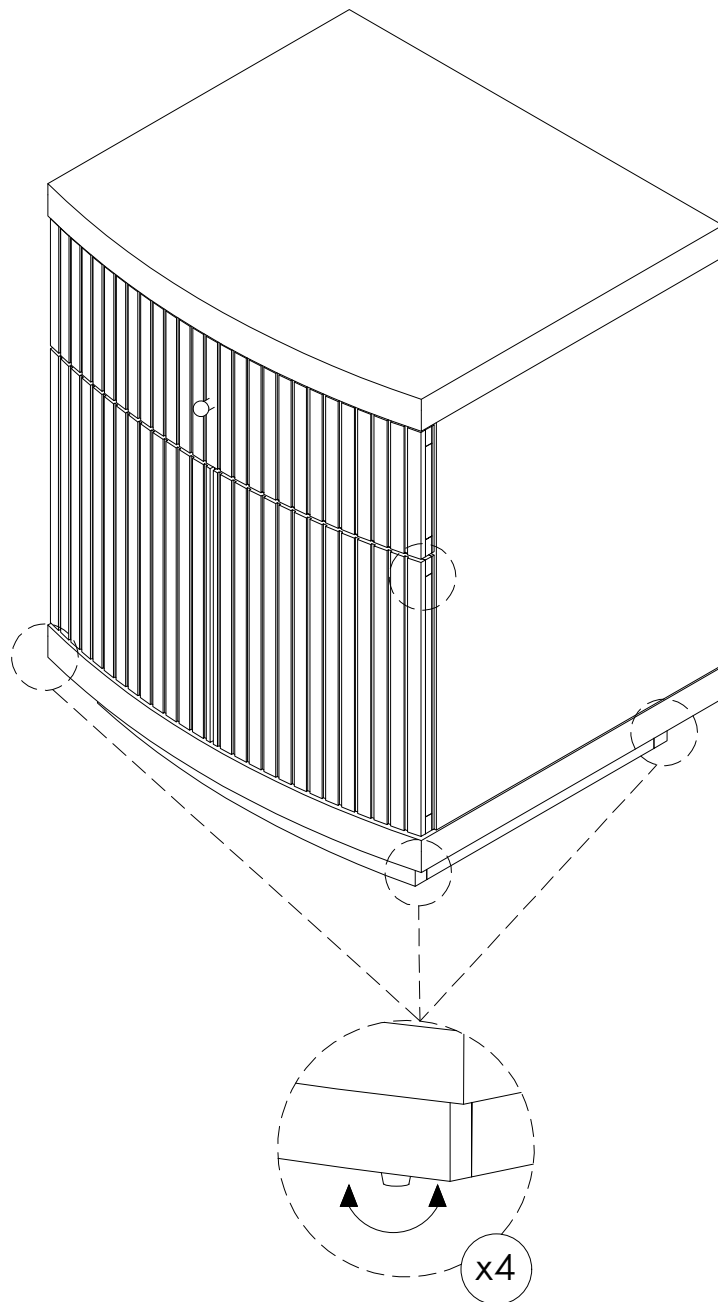


ICYDK*: These Push Latches (2) are adjustable! This will help keep your doors flush with the front frame. Secure them in place using the Screw (14).



Step 23

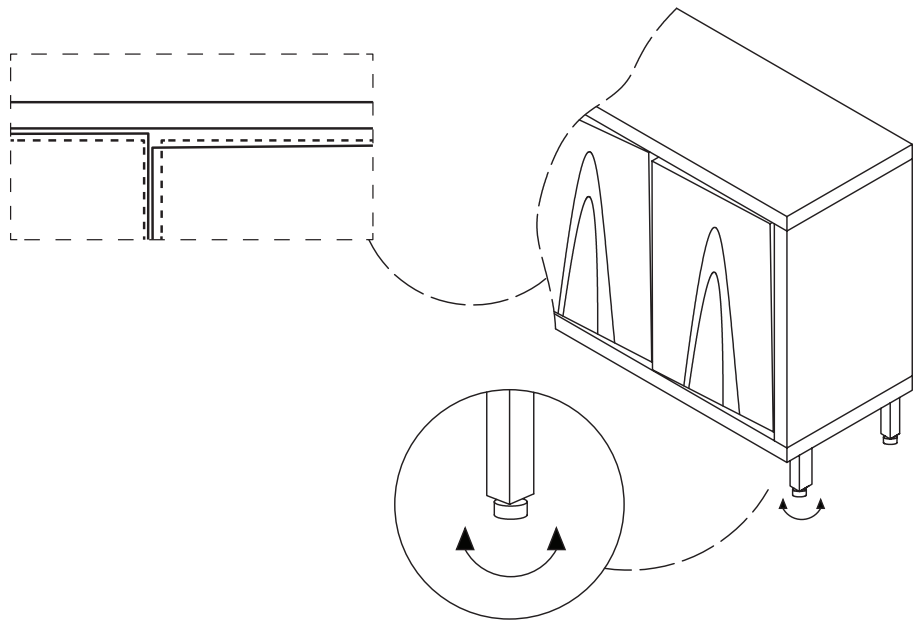
Now go ahead and check that your Nightstand is level and not wobbly. If it's looking a little unlevel, adjust the levelers on the feet until it's nice and level.



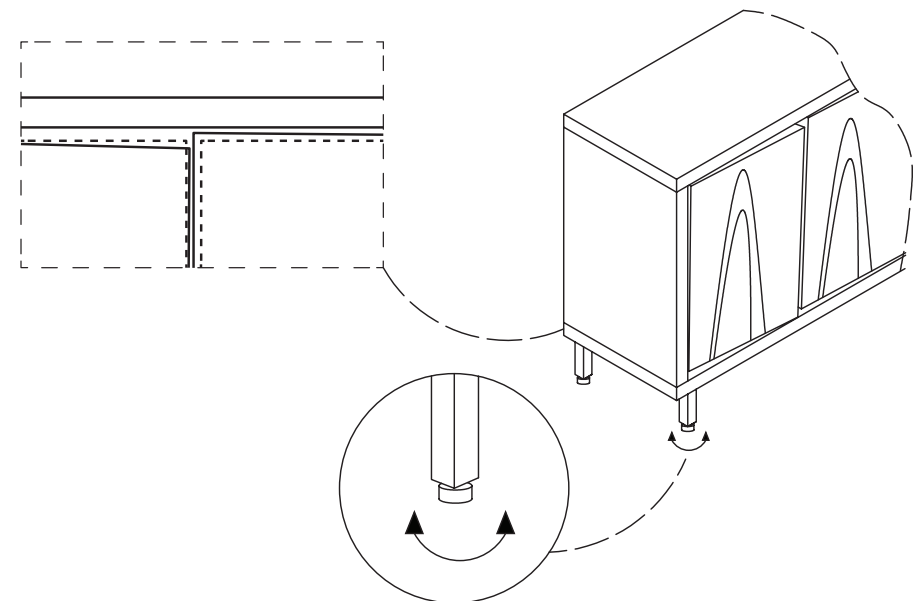
Is your cabinet door looking crooked or unevenly spaced? (Cont.)

If you're still having trouble lining everything up, your next step should be to adjust the leveling glides to square up the cabinet and doors and make sure things are level. Follow the instructions below:

If the right door appears to be hanging low, you can adjust the adjustable leveler on the front right until the door is better aligned.



If the left door appears to be hanging low, you can adjust the adjustable leveler on the front left until the door is better aligned.



No heartburn, when we handle the return

Give us a call **1-866-619-1004** or shoot us a message at **help@nathanjames.com** we will issue you a free replacement with **zero hassle**.

Our way



Give us a call



Replacement



You

Their way



Re-package item



Schedule pick up



Track package



Replacement



You

We really don't want you to go through the hassle of re-packaging your item and sending it back, because let's be honest...nobody has time for that.

Safety first, fun later

We want your product to last as long as possible, so we recommend that you tighten the screws 2 weeks after assembly and for added safety check the tightness of all screws every 2 months.

For proper care and treatment of wood and metal please check our website
at NathanJames.com/products

Safe use of this product starts with you.

Use this product responsibly with the primary concern for your safety. Follow assembly instructions carefully and inspect product upon receipt and each use.

Nathan James and its parent companies cannot be held legally responsible for any injuries or death resulted from failure to follow instructions or improper use of this product.

Do not modify the structure of this product in any way.

Our products have been tested to meet specific safety measures as they were originally intended to be sold. Any modifications will present the risk of creating significant safety issues which NJ will not be responsible for.

Proper use

- | | |
|---------------|--|
| DO NOT | use for commercial purposes |
| DO NOT | climb on nightstand |
| DO NOT | exceed weight limit |
| DO NOT | leave spilled liquid on nightstand |
| DO NOT | use if nightstand is damaged or broken |
| DO NOT | make temporary repairs |
| DO NOT | use outdoors |

We are only in business if you're happy

For starters, thanks for being you.

☎ Toll-free at 1-866-619-1004

✉ Help@nathanjames.com

🌐 NathanJames.com/help

We do our best to ensure your furniture arrives without any problems, but occasionally mistakes happen—as humans we are imperfect beings. In the event that a part is damaged or missing, we will be more than happy to provide you with replacement part(s) for free.

Warranty

This product comes with a lifetime warranty from the date of purchase. Please use your phone to scan the QR code to register your product or visit <https://goo.gl/i9dk3q>



Did we do alright? Please spread the love!

If you are happy with your product, tell your friends and family about us or even better leave us a review online. Spreading the word gives us the opportunity to make more people happy and keep our prices low for your next purchase.

Brooke Burdon

Founder, Nathan James