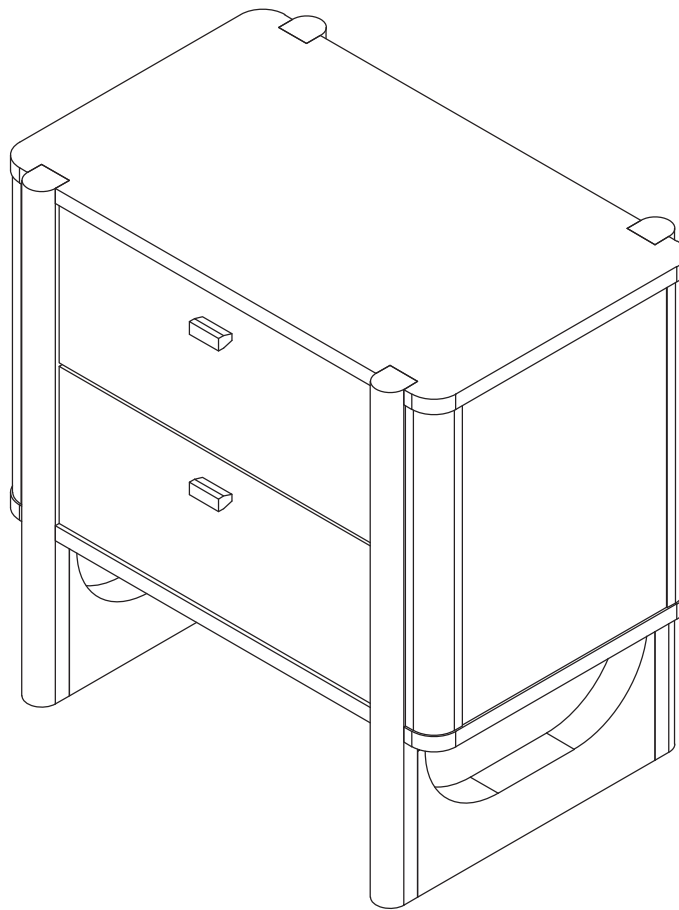


Let's build the

Solace Nightstand

SKU 32730



Scan me!

Free Lifetime
Warranty

nathan james

25-0603-VN

Ok, let's get rolling

This should be easy, just follow our instructions and you will be back to Netflix in no time.

Estimated time for assembly

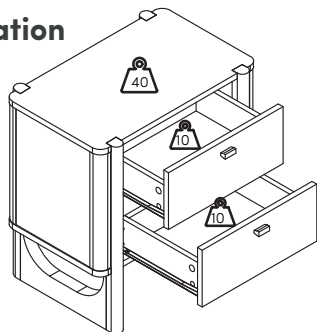


60:00

What you need

- Phillips-head screwdriver
- Some of your favourite bubbly or your preferred relaxant
- Use the packaging carton as a working surface to prevent product damage during assembly

Weight Limitation



Top Max. Capacity: 40 lbs

Upper Drawer Max. Capacity: 10 lbs.

Bottom Drawer Max. Capacity: 10 lbs.

Toll-free at 1-866-619-1004

Help@nathanjames.com

Nathanjames.com/help

What's included

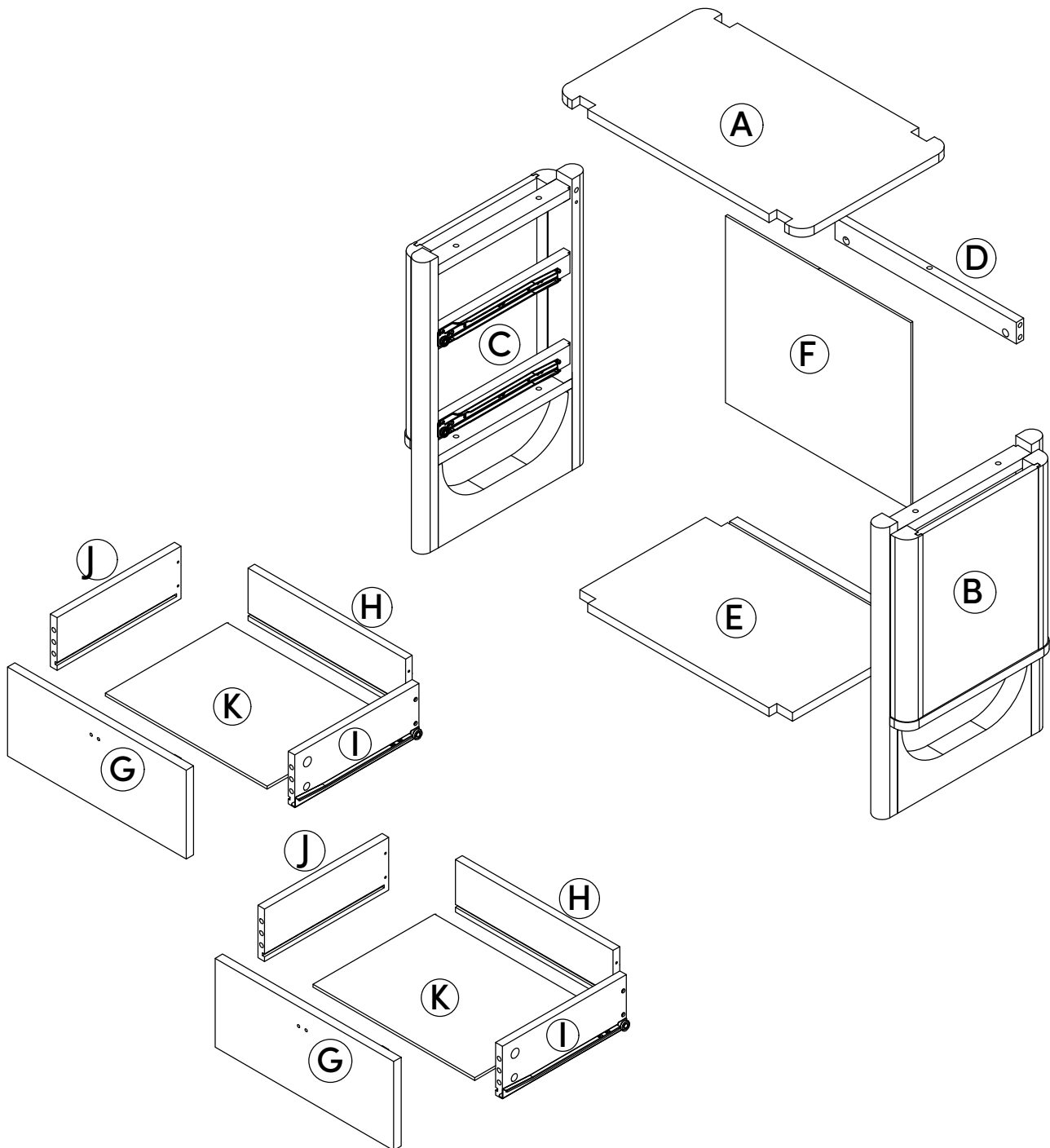
Description		Qty
A	Top Panel	1
B	Right Side Panel	1
C	Left Side Panel	1
D	Top Back Rail	1
E	Bottom Panel	1
F	Back Panel	1
G	Drawer Front	2
H	Drawer Back	2
I	Drawer Right Side	2
J	Drawer Left Side	2
K	Drawer Bottom	2

Scan me!

Free Lifetime
Warranty



The goods



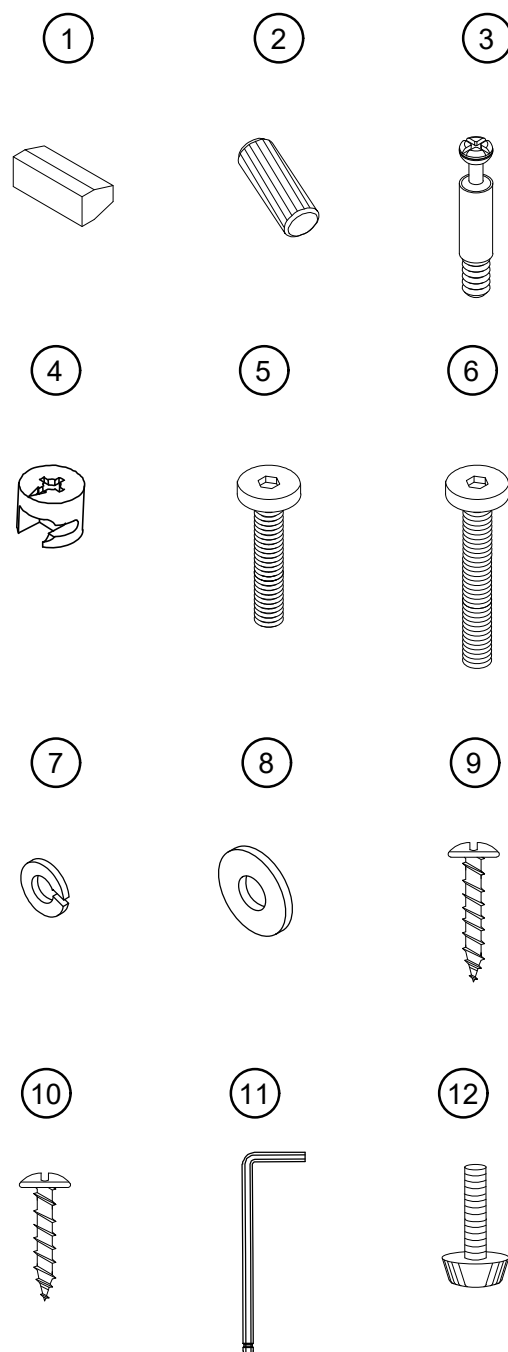
IMPORTANT

1. Do not tighten bolts / screws completely until all bolts / screws are lined up and inserted into holes.
2. Do not over tighten screws and bolts to avoid stripping.

What's included

Description		Qty
1	Handle	2
2	Ø8 x 30mm Wooden Dowel (Extra 2pcs)	8
3	Cam Bolt (Extra 2pcs)	12
4	Cam Lock (Extra 2pcs)	12
5	Ø1/4" x 35mm Hex Button Head Bolt	8
6	Ø1/4" x 55mm Hex Button Head Bolt	1
7	Ø1/4" x 10mm Spring Washer	9
8	Ø1/4" x 13mm Flat Washer	9
9	M4 x 30mm Screw	8
10	M4 x 25mm Screw	4
11	Allen Key	1
12	Leveler (Extra)	2

The goods



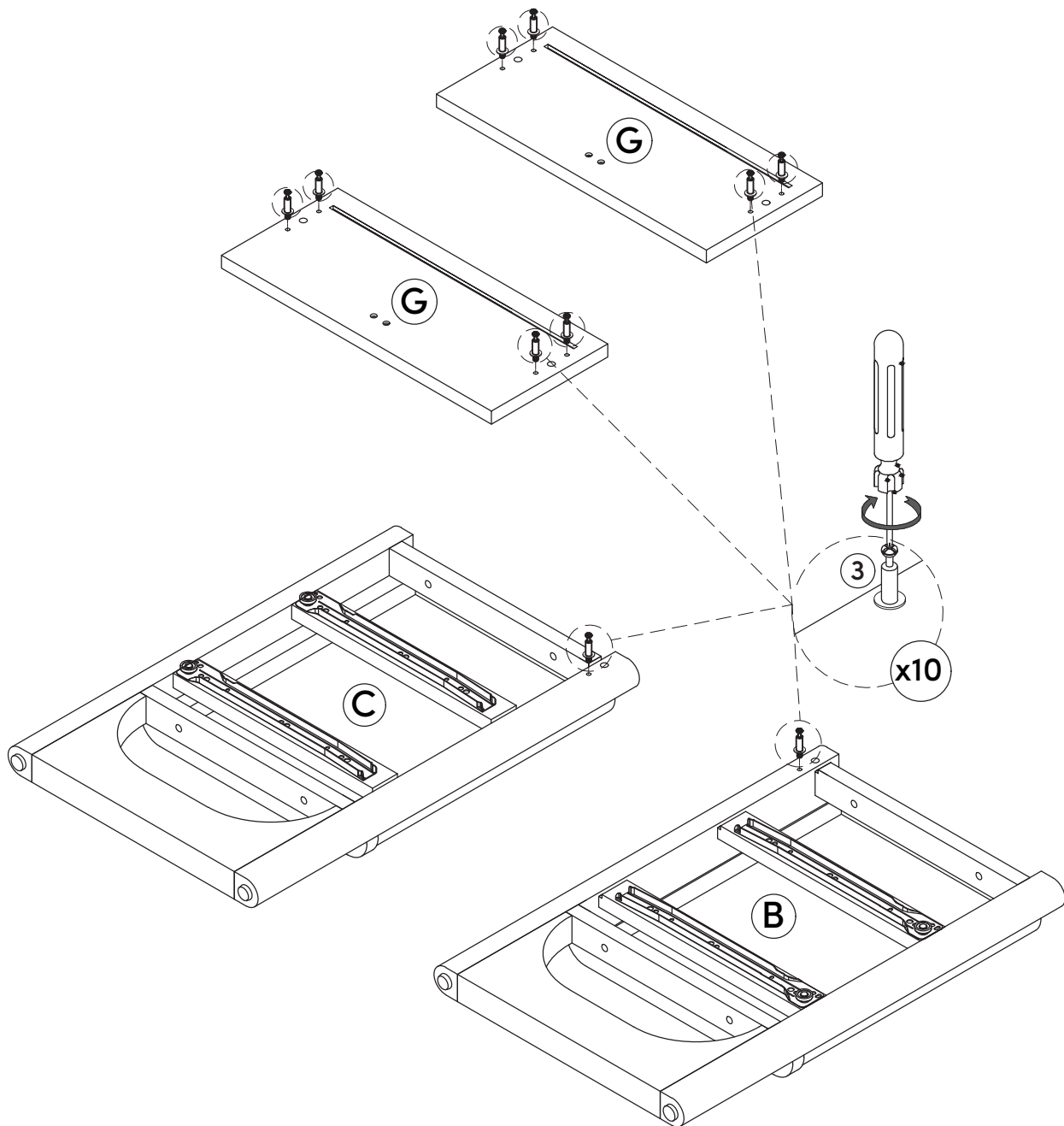
Step 1

Screw the Cam Bolts (3) onto the Drawer Front (G), Right Side Panel (B) and Left Side Panel (C).

3



x 10 PCS



Step 2

Insert one Wooden Dowel (2) to the Left Side Panel (C). Now place the Top Back Rail (D) onto the Wooden Dowel (2). Make sure to line things up as shown below.

Finally, use the Cam Lock (4) to secure the Back Top Rail (D).

②

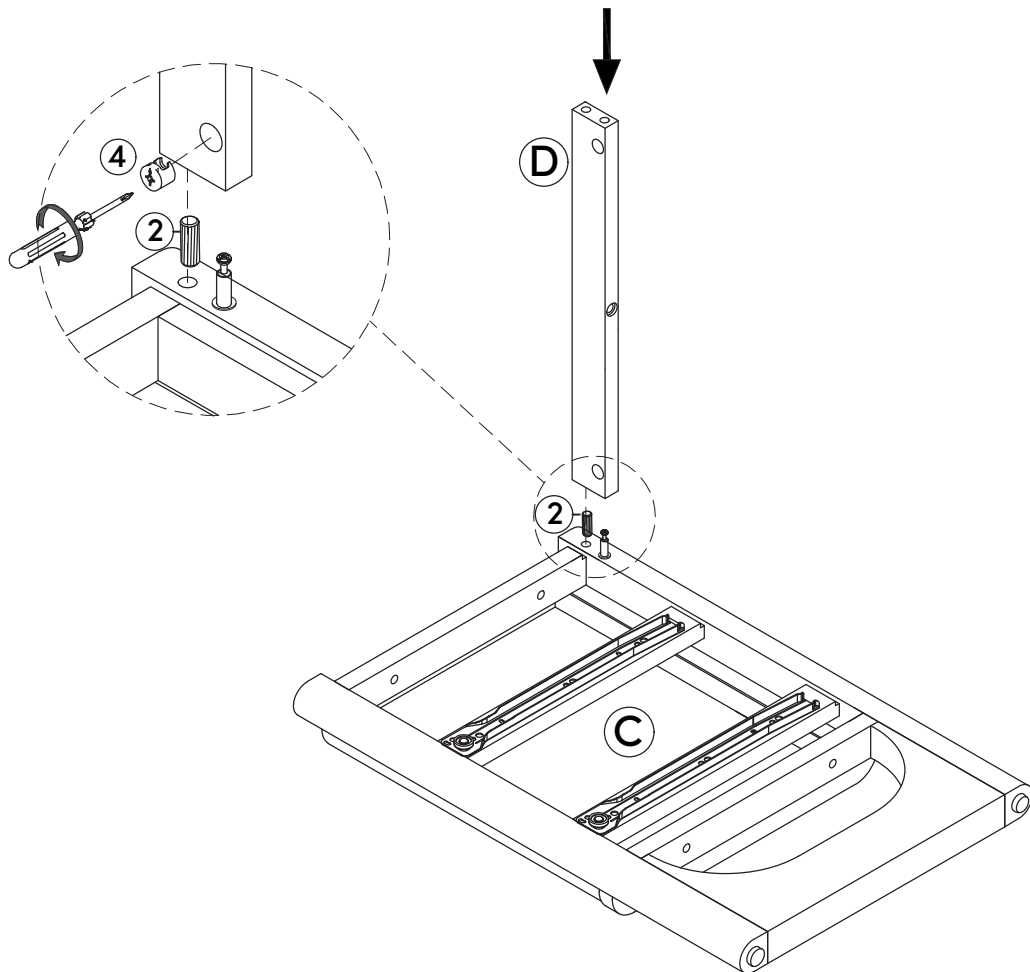


x1 PC

④



x1 PC



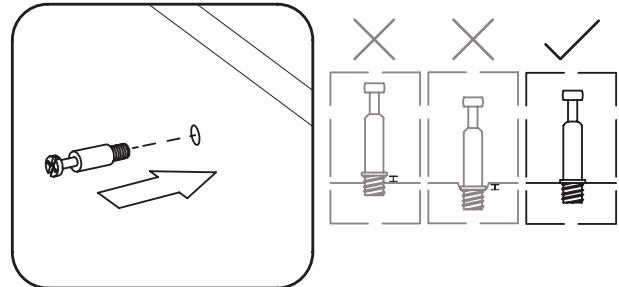
How to use cam locks

Did you know?

Cam locks are used to join two panels together, usually the edge of one to the flat side of another.

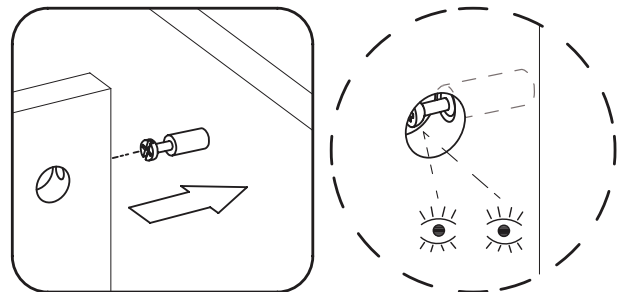
First, your cam bolt (or cam pin) will need to be properly inserted into the flat side of the board.

Important Note: Only tighten the cam bolt until it is secure. Do not over-tighten.



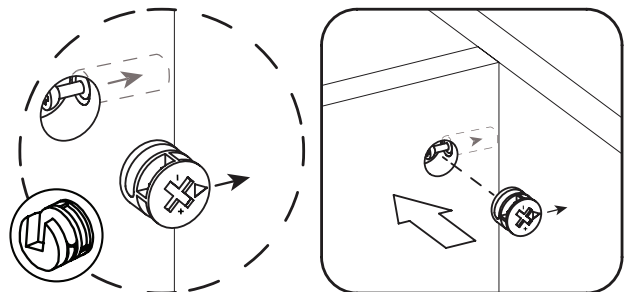
Next, you will fit the proper hole on the edge of the associated joining panel over the cam bolt.

Important Note: When installed properly, the head of the cam bolt will be visible through the larger hole on the side of the joining panel.



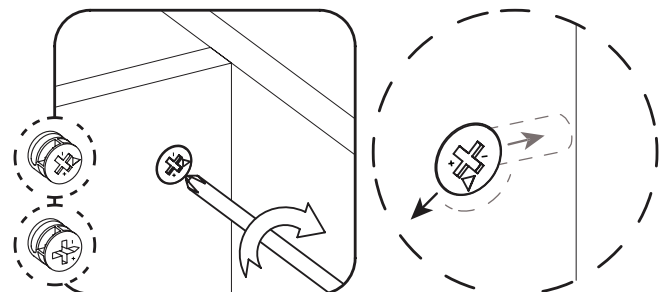
Next, you will notice the cam lock has a “C” shaped back. Commonly, an arrow on the front of the cam lock points in the same direction as the open section on back.

Using these as your cue, insert the cam lock into the large hole so the opening of the “C” fits over the head of the cam bolt.



Using a screwdriver, you will turn the cam lock until it stops, usually between 130° or 180°. You will feel the panels pulling closer until they are secured.

Important Note: Only turn the cam lock until the panels are fully engaged & feel secure. Turning too far may lead to hardware failure



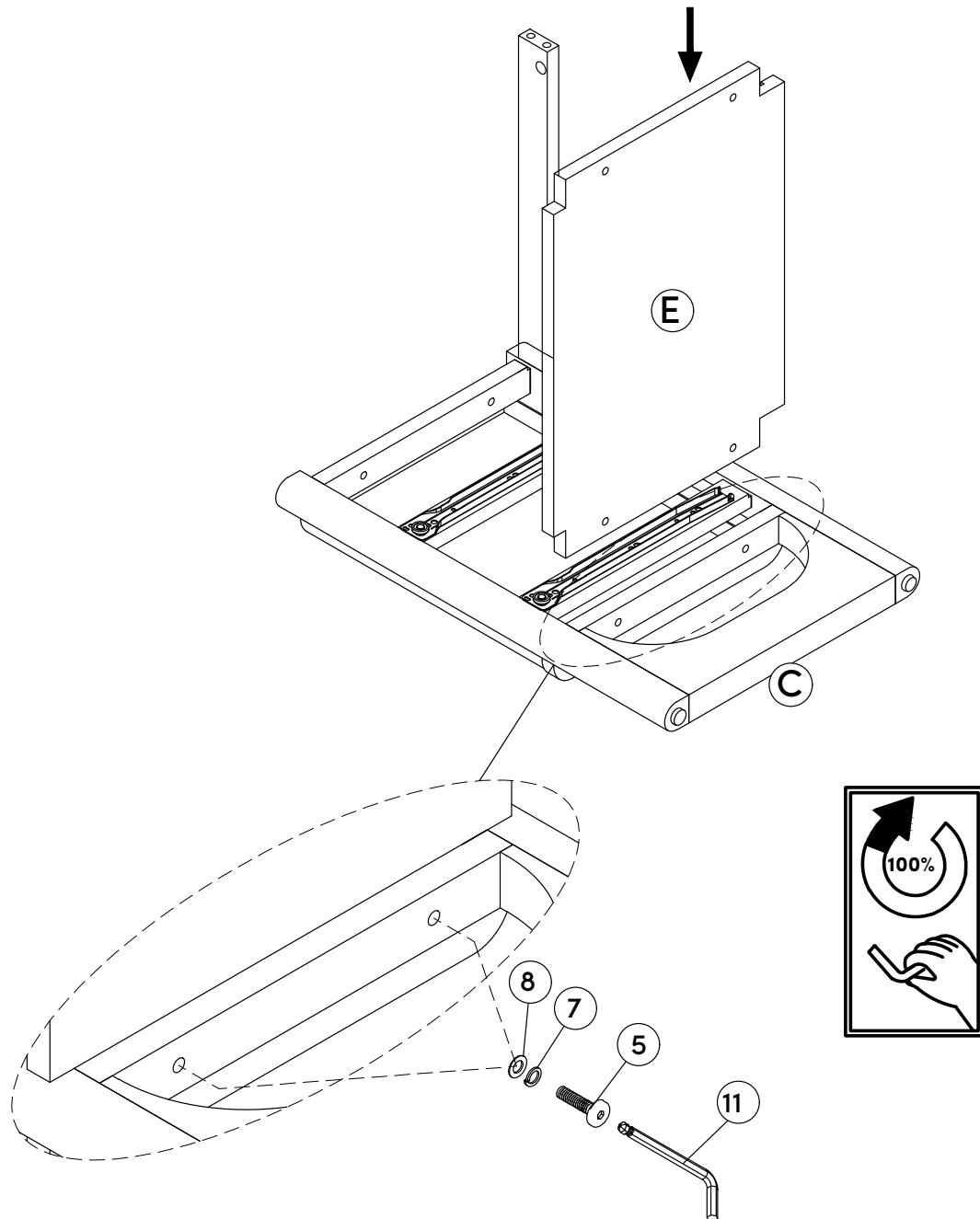
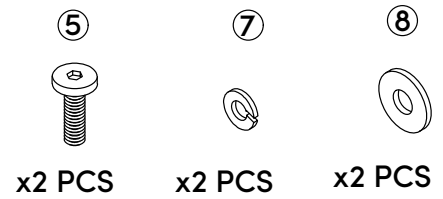
Still having issues?

If a cam lock seems to be spinning in place or is not “catching” or pulling the panels together as expected, first remove the cam lock & try again while making sure that everything is properly positioned & oriented.

If you are still having issues getting things work ing as expected, first remove the cam lock then unscrew the cam bolt slightly (less than 1 complete turn) to see if that helps with the alignment of the cam lock & bolt.

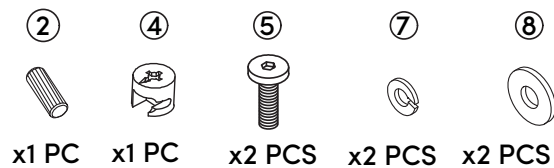
Step 3

Now attach the Bottom Panel (E) to the Left Side Panel (C). Slide the Spring Washer (7) and the Flat Washer (8) onto the Bolts (5). Use these parts and the Allen Key (11) to secure the Bottom Panel (E) to the Left Side Panel (C) together.

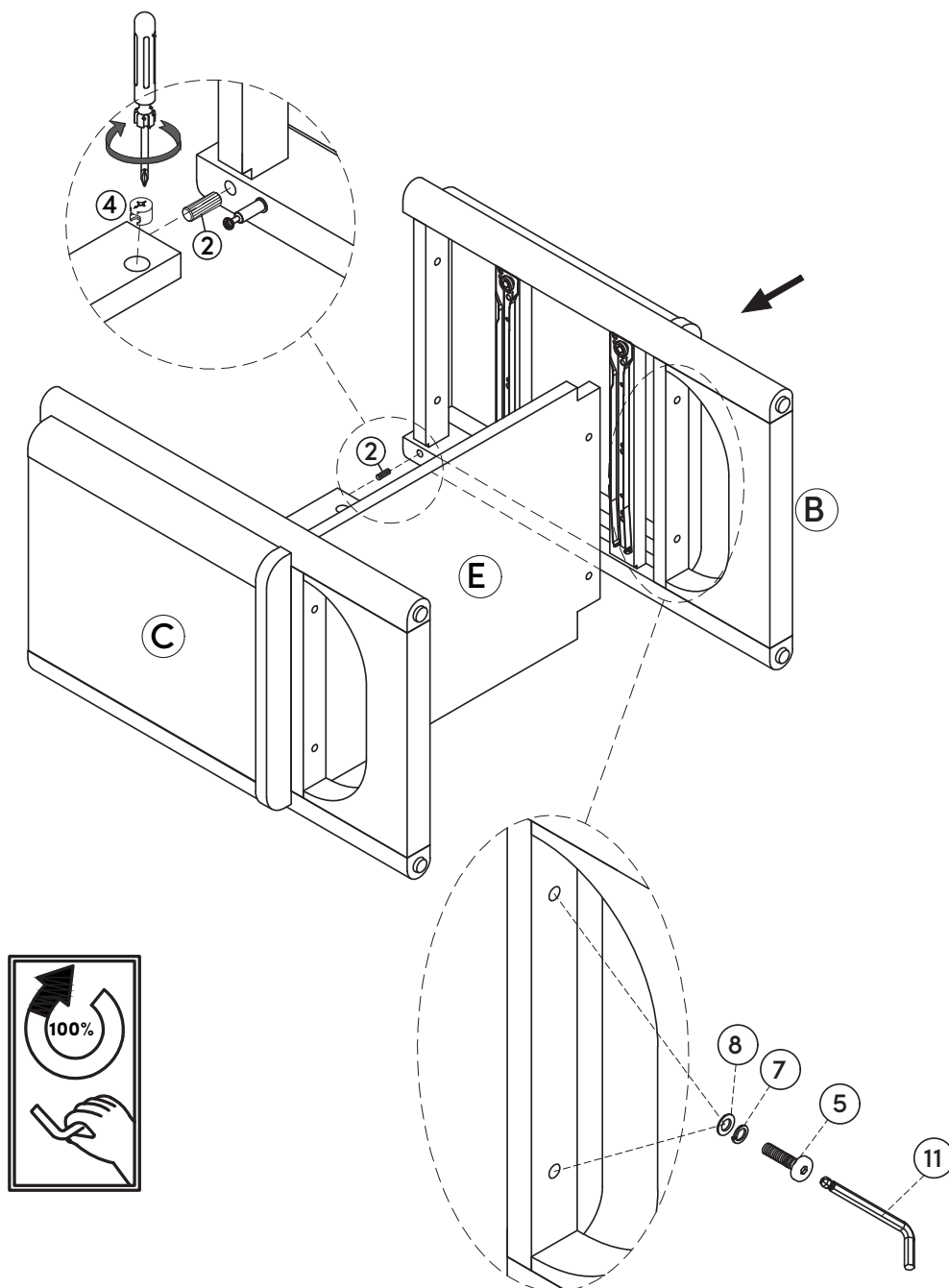


Step 4

Insert the Wooden Dowel (2) to the Top Back Rail (D). Then place the Right Side Panel (B) onto the Wooden Dowel (2). Make sure to line things up as shown below. Finally, use the Cam Lock (5) to secure the Back Top Rail.



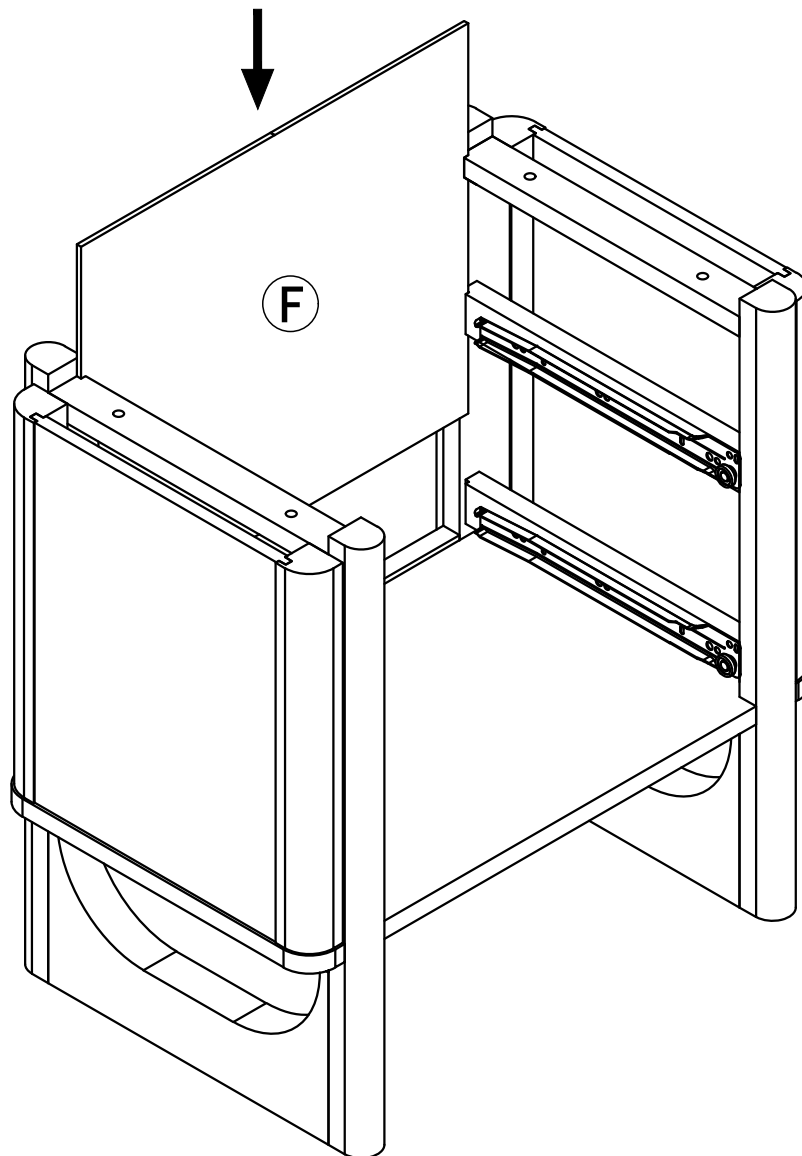
Next, slide the Spring Washer (7) and the Flat Washer (8) onto the Bolts (4). Use these parts and the Allen Key (11) to secure the Bottom Panel (E) to the Right Side Panel (B) together.



Step 5

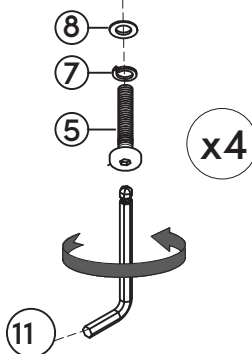
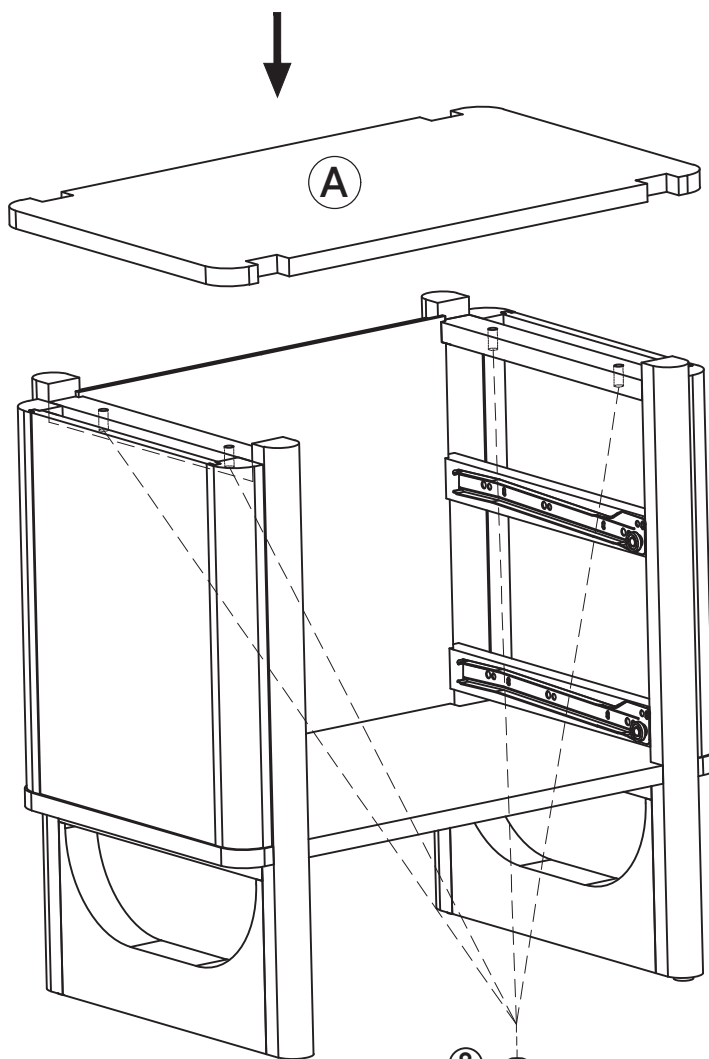
Slide the Back Panel (F) into place on the nightstand.

It should fit smoothly into the grooves.



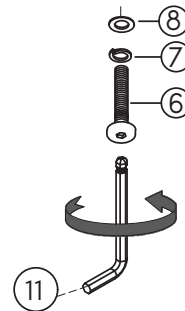
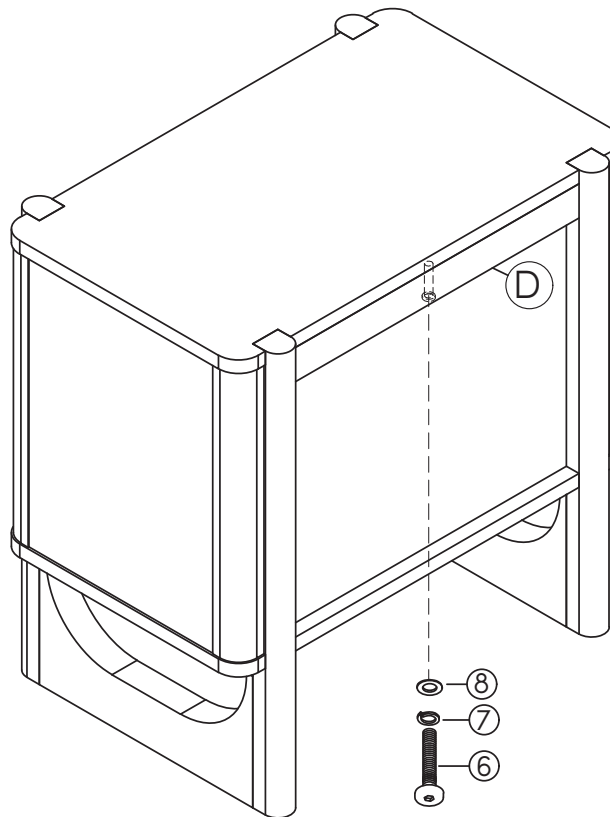
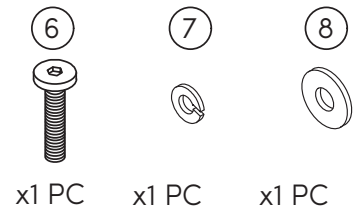
Step 6

Place the Top Panel (A) onto the Left Side Panel (C) and Right Side Panel (B). Then slide the Spring Washer (7) and the Flat Washer (8) onto the Bolts (5). Use these parts and the Allen Key (11) to secure the Top Panel (A) and Left Side Panel (C) and Right Side Panel (B) together.



Step 7

Slide the Spring Washer (7) and the Flat Washer (8) onto the Bolt (6). Use these parts and the Allen Key (11) to secure the Top Back Rail (D) and Top Panel (A) together.



Step 8

Let's get started on the drawers!

Begin by inserting the Wooden Dowel (2) onto the Drawer Front (G). Then attach the Drawer Right Side (I) and Drawer Left Side (J) onto Wooden Dowel (2). Secure these parts in place using the Cam Locks (4).

②

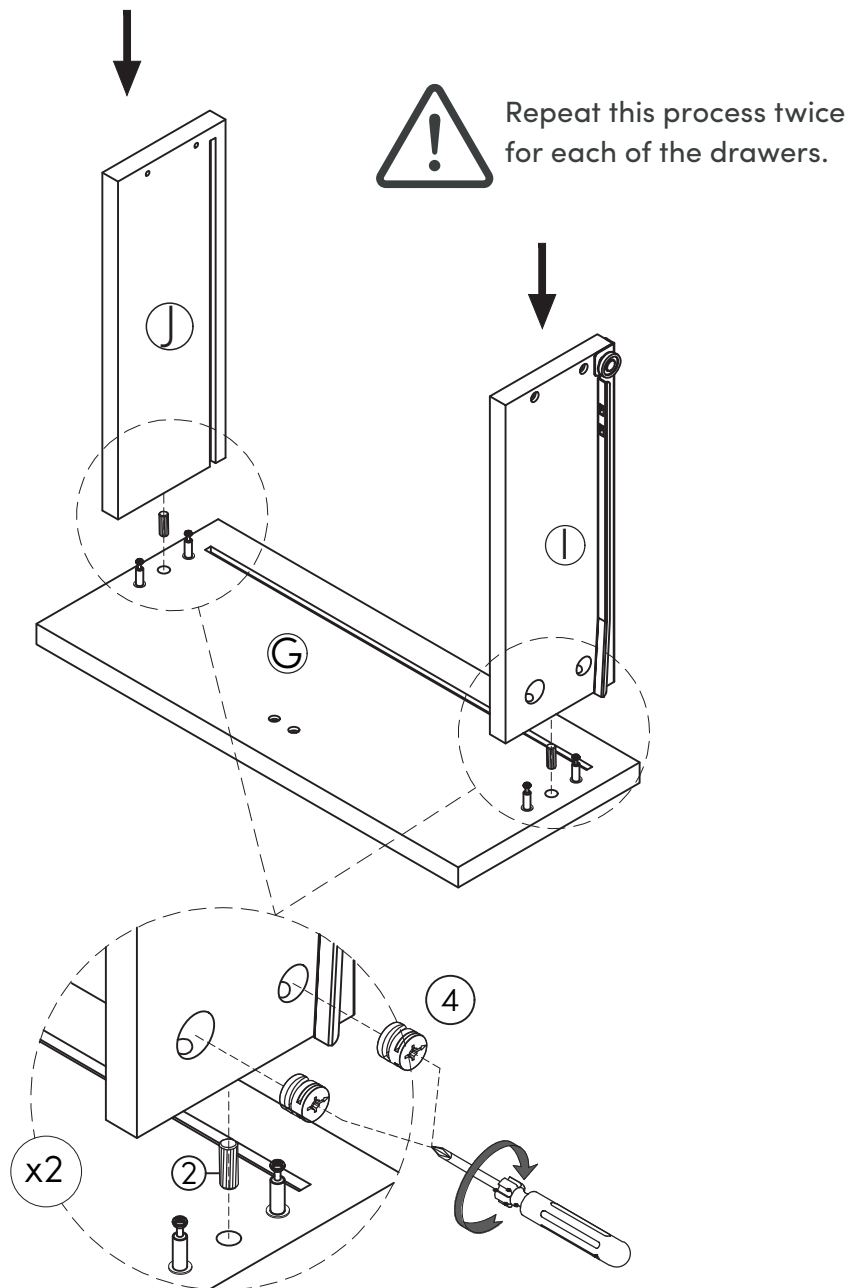


x4 PCS

④



x8 PCS

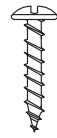


Step 9

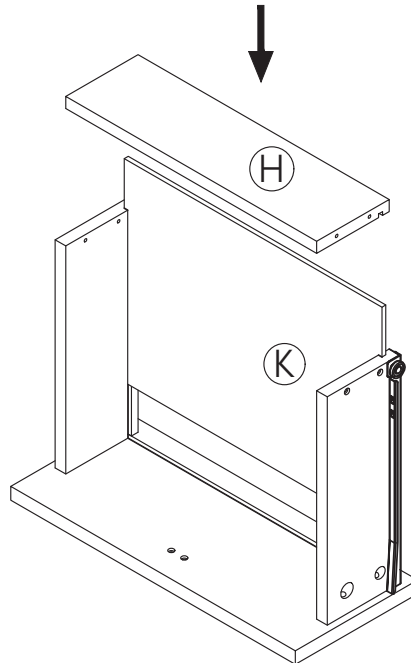
Continue by sliding the Bottom Drawer (K) into the Drawer. It should fit smoothly into the grooves. Then, place the Drawer Back (H) on Drawer. Make sure to line things up as shown.

Finally, use the M4 x 30mm Screw (9) to secure it on place.

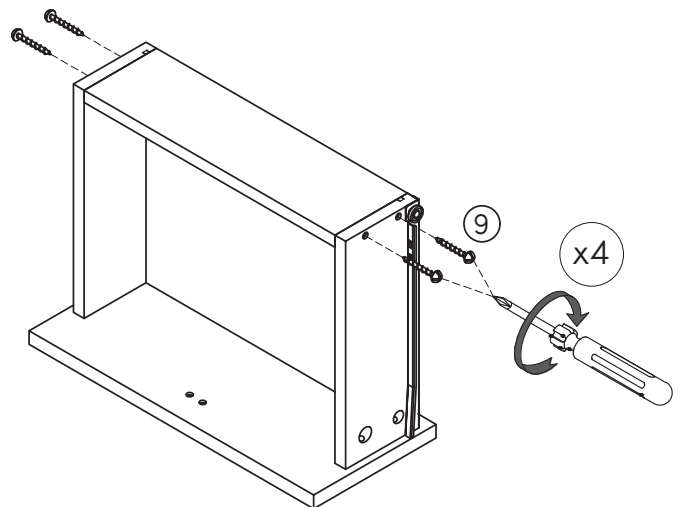
9



x8 PCS

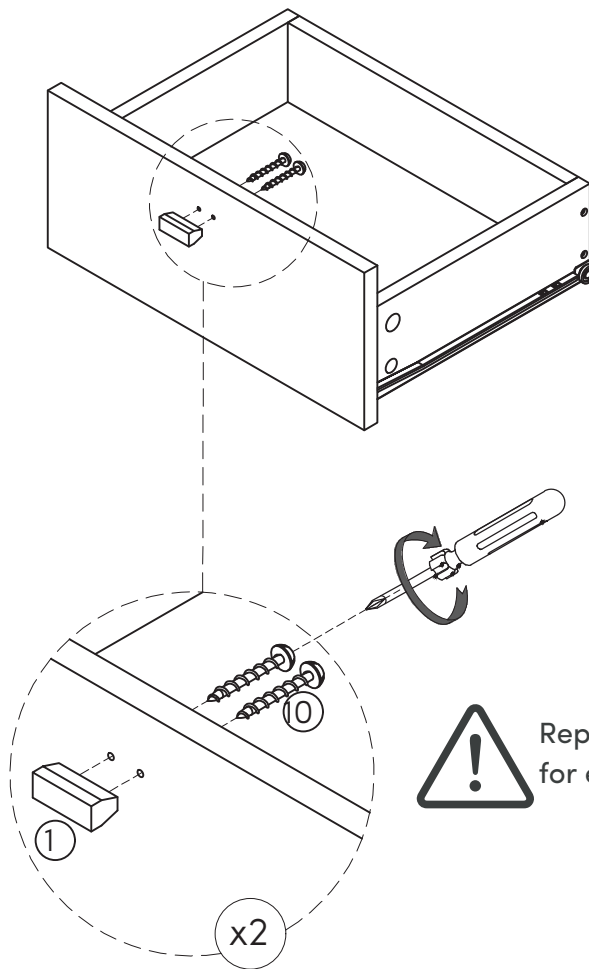
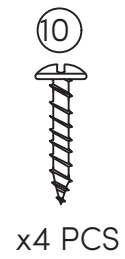
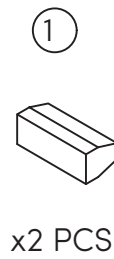


Repeat this process twice for each of the drawers.



Step 10

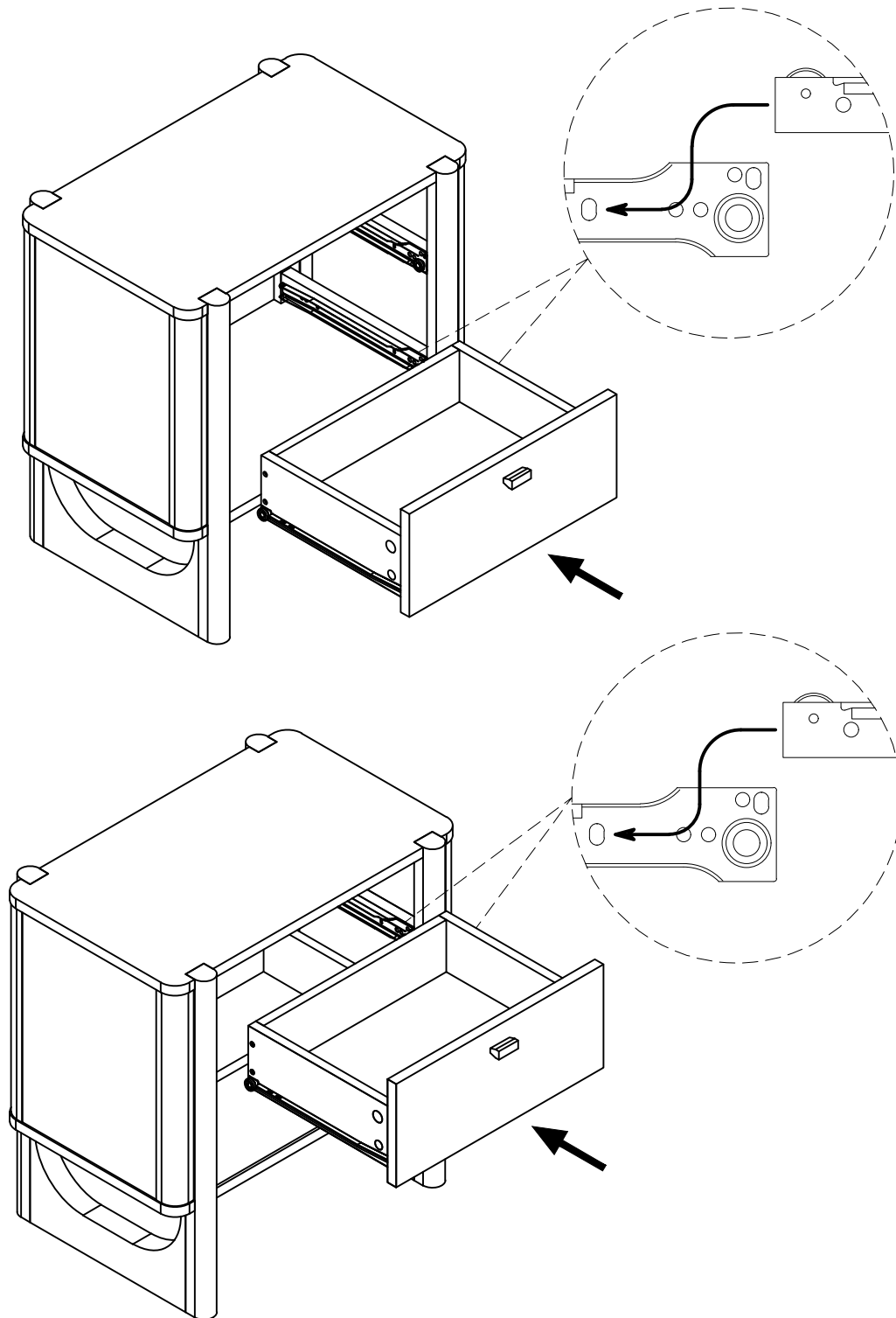
Finally, attach the Handle (1) to the Drawer Front (G) and secure it in place using the M4 x 25mm Screw (10).



Repeat this process twice for each of the drawers.

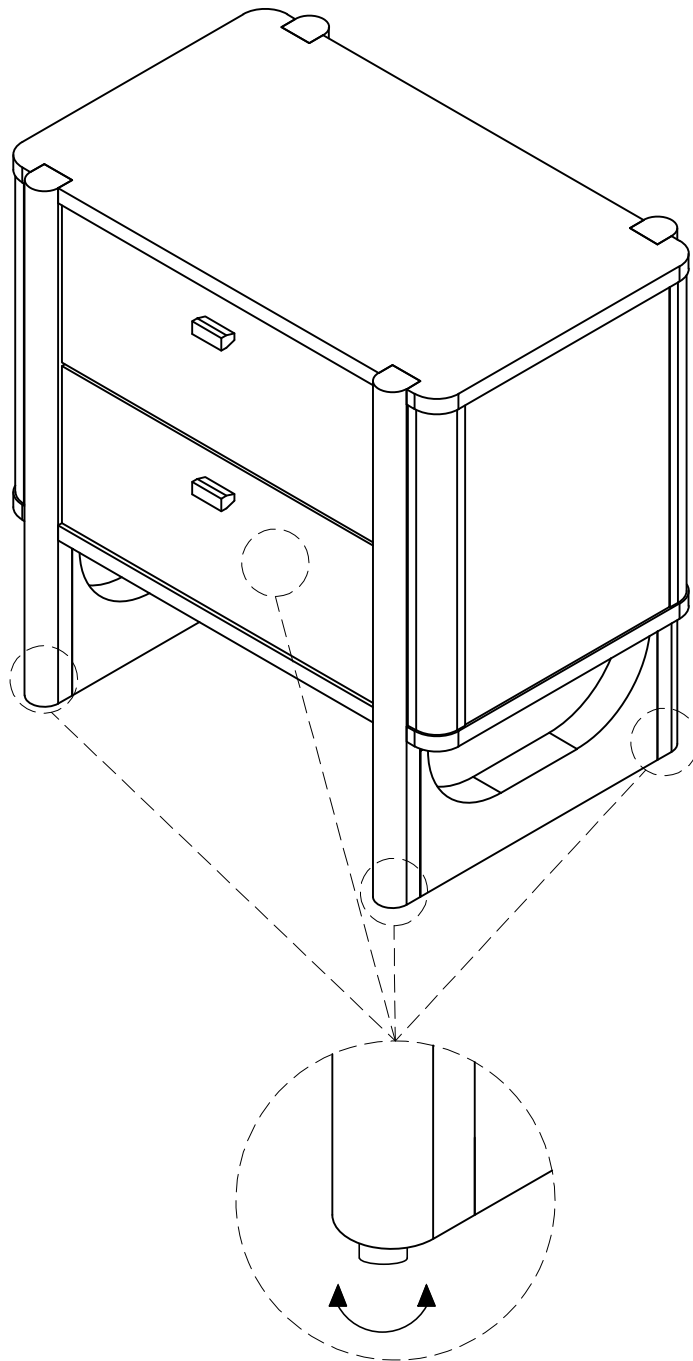
Step 11

Insert the drawers into the nightstand.



Step 12

Now go ahead and check that your nightstand is level and not wobbly. If it's looking a little unlevel, adjust the levelers on the feet until it's nice and level.



Wobbly or unlevel?
Adjust feet until stable.

No heartburn, when we handle the return

Give us a call **1-866-619-1004** or shoot us a message at **help@nathanjames.com** we will issue you a free replacement with **zero hassle**.

Our way



Give us a call



Replacement



You

Their way



Re-package item



Schedule pick up



Track package



Replacement



You

We really don't want you to go through the hassle of re-packaging your item and sending it back, because let's be honest...nobody has time for that.

Safety first, fun later

We want your product to last as long as possible, so we recommend that you tighten the screws 2 weeks after assembly and for added safety check the tightness of all screws every 2 months.

For proper care and treatment of wood and metal please check our website
at NathanJames.com/products

Safe use of this product starts with you.

Use this product responsibly with the primary concern for your safety. Follow assembly instructions carefully and inspect product upon receipt and each use.

Nathan James and its parent companies cannot be held legally responsible for any injuries or death resulted from failure to follow instructions or improper use of this product.

Do not modify the structure of this product in any way.

Our products have been tested to meet specific safety measures as they were originally intended to be sold. Any modifications will present the risk of creating significant safety issues which NJ will not be responsible for.

Proper use

- | | |
|---------------|--|
| DO NOT | use for commercial purposes |
| DO NOT | climb on nightstand |
| DO NOT | exceed weight limit |
| DO NOT | leave spilled liquid on nightstand |
| DO NOT | use if nightstand is damaged or broken |
| DO NOT | make temporary repairs |
| DO NOT | use outdoors |

We are only in business if you're happy

For starters, thanks for being you.

☎ Toll-free at 1-866-619-1004

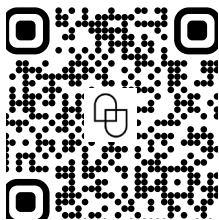
✉ Help@nathanjames.com

🌐 NathanJames.com/help

We do our best to ensure your furniture arrives without any problems, but occasionally mistakes happen—as humans we are imperfect beings. In the event that a part is damaged or missing, we will be more than happy to provide you with replacement part(s) for free.

Warranty

This product comes with a lifetime warranty from the date of purchase. Please use your phone to scan the QR code to register your product or visit <https://goo.gl/i9dk3q>



Did we do alright? Please spread the love!

If you are happy with your product, tell your friends and family about us or even better leave us a review online. Spreading the word gives us the opportunity to make more people happy and keep our prices low for your next purchase.

Brooke Burden

Founder, Nathan James