

ASSEMBLY INSTRUCTIONS

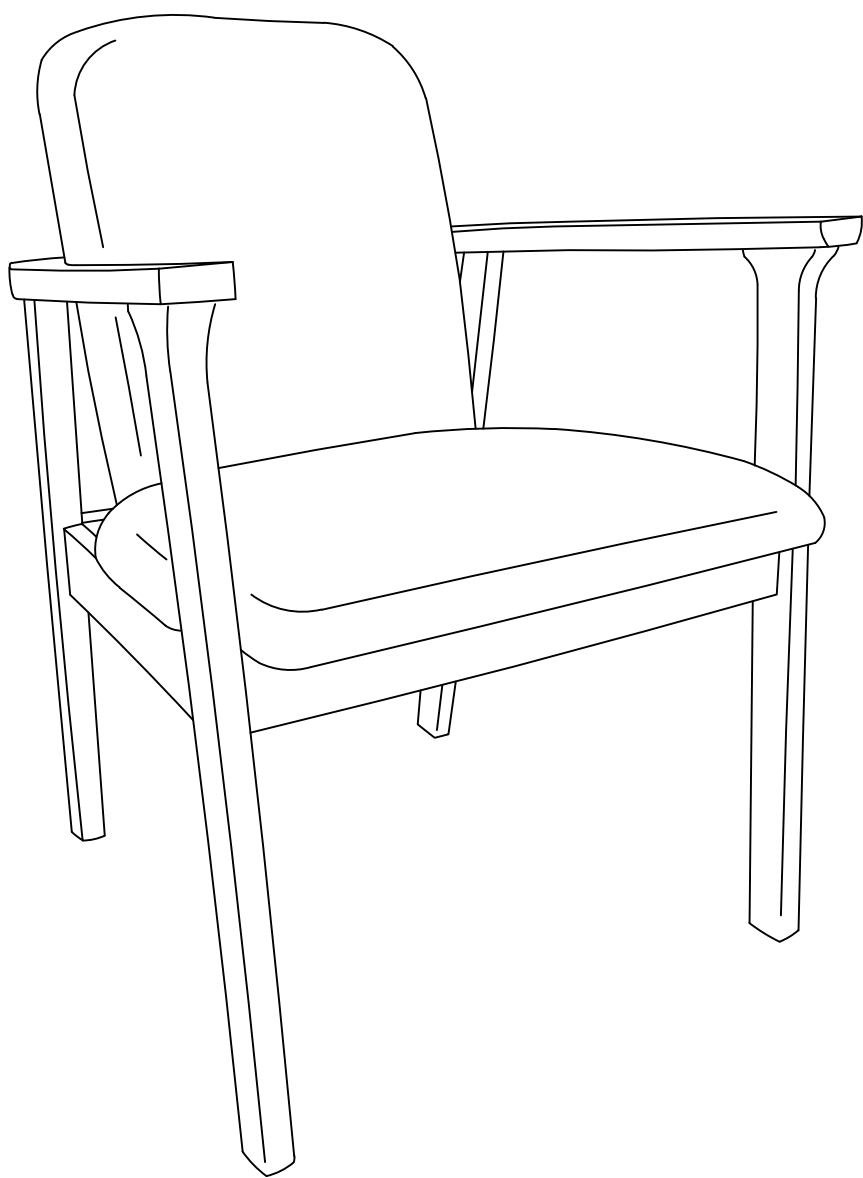
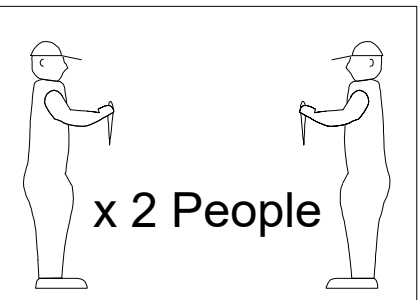
MODEL: MIYAGI CHAIR

Read this instruction carefully. Remove all wrapping material, staples and straps from the carton. See hardware and furniture part list for guidance. Be sure you have all wooden furniture parts on a clean and flat soft surface, such as a carpet or rug, to prevent from being scratched.

- CAUTION:
- 1. Do Not **FULLY - TIGHTEN** the nut or screw until all is ready to assemble.
 - 2. Do Not **OVER - TIGHTEN** the nut or screw to avoid causing damages to the tread.
 - 3. Keep all hardware part out reach of children.

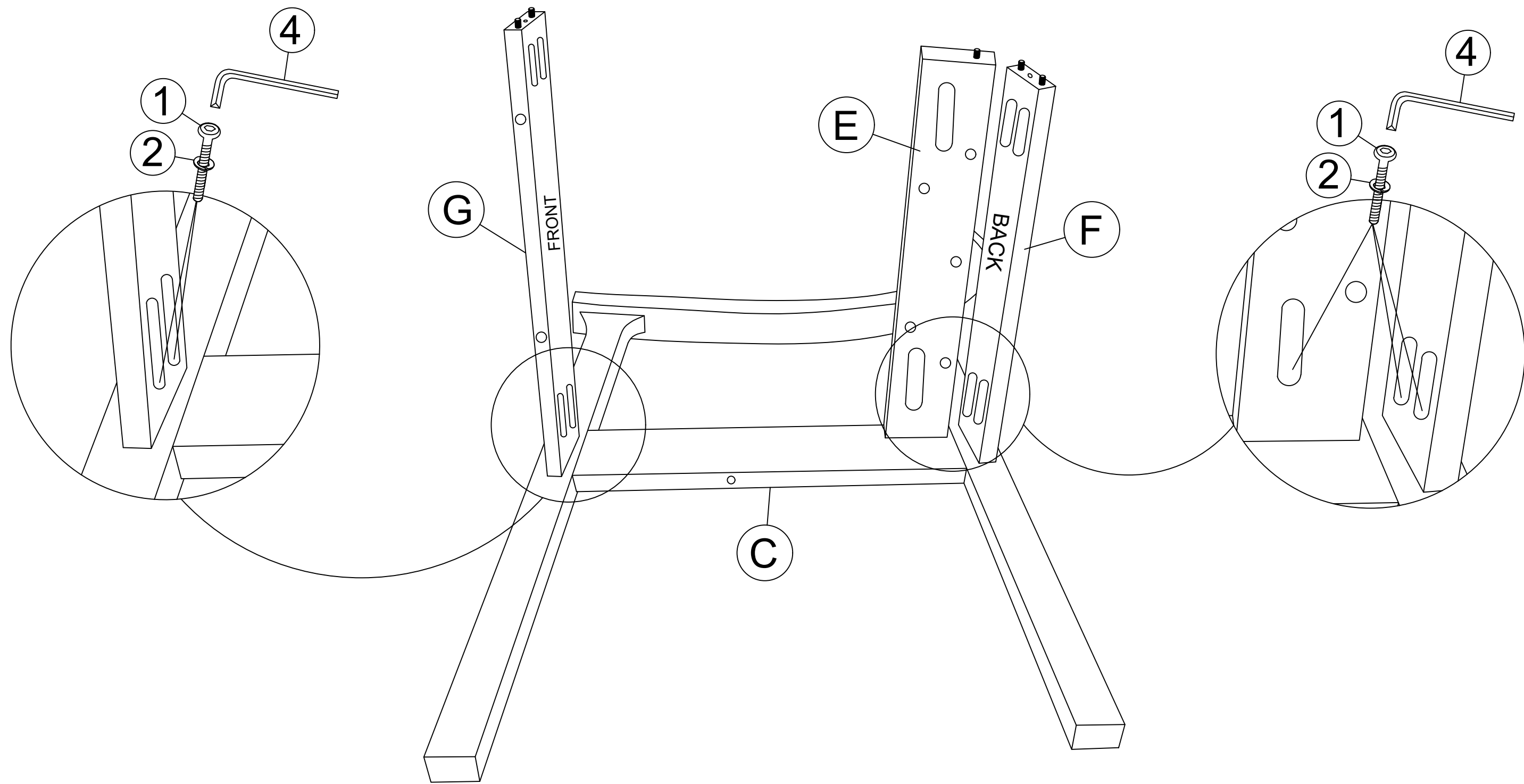
Part List		
No.	Description	Qty
A	Back rest	1 pc
B	Seat	1 pc
C	Leg Frame (Left)	1 pc
D	Leg Frame (Right)	1 pc
E	Center Rail	1 pc
F	Back Rail	1 pc
G	Front Rail	1 pc

Hardware List		
No.	Description	Qty
1	JCBC M6 x 50mm	10 pcs
2	Spring Washer M6	10 pcs
3	Csk 32mm	13 pcs
4	Allen Key M4 x 110mm	1 pc
5	Wood Dowel 8 x 30	2 pcs

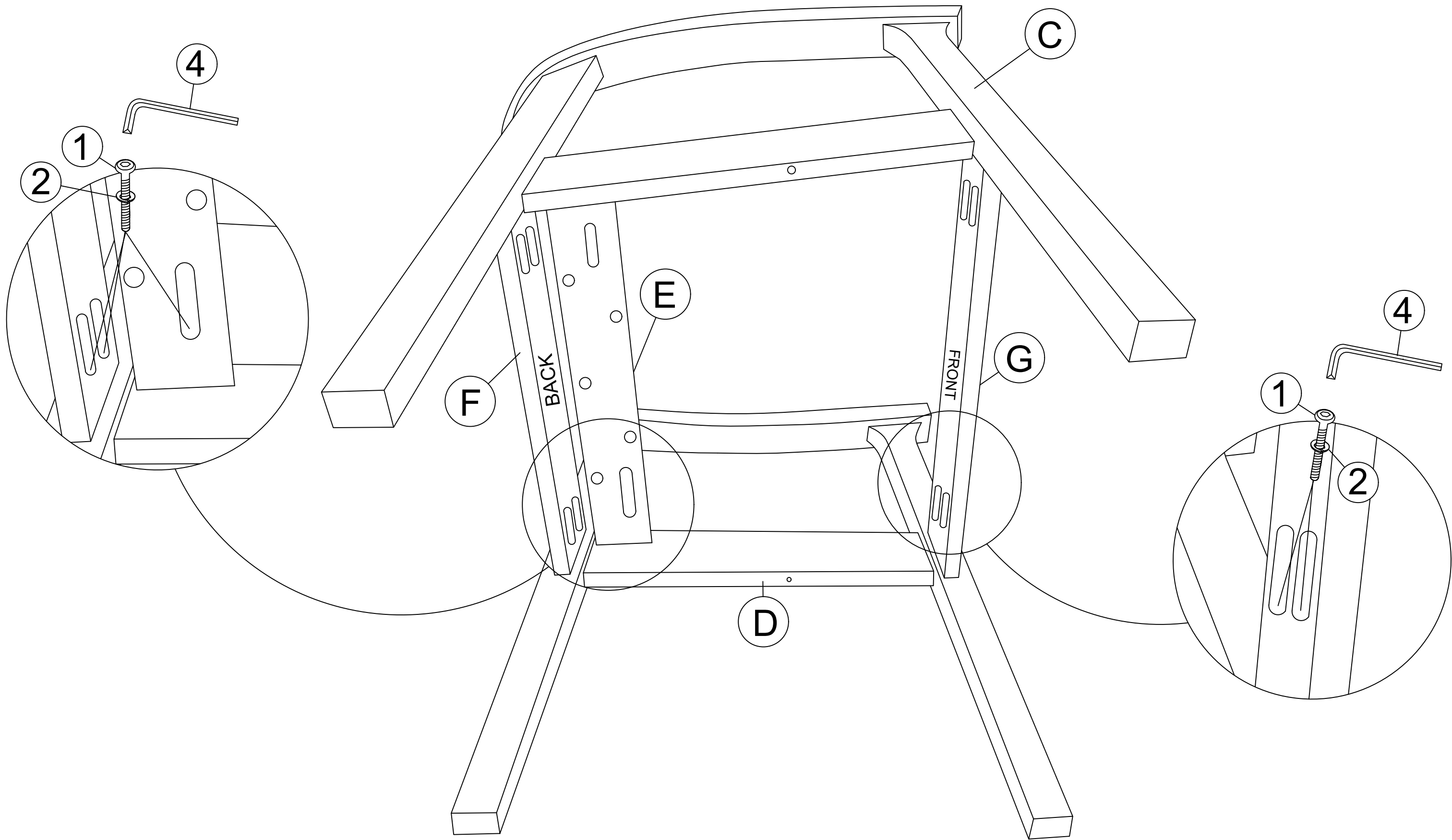


COMPLETE ASSEMBLY

Step 1

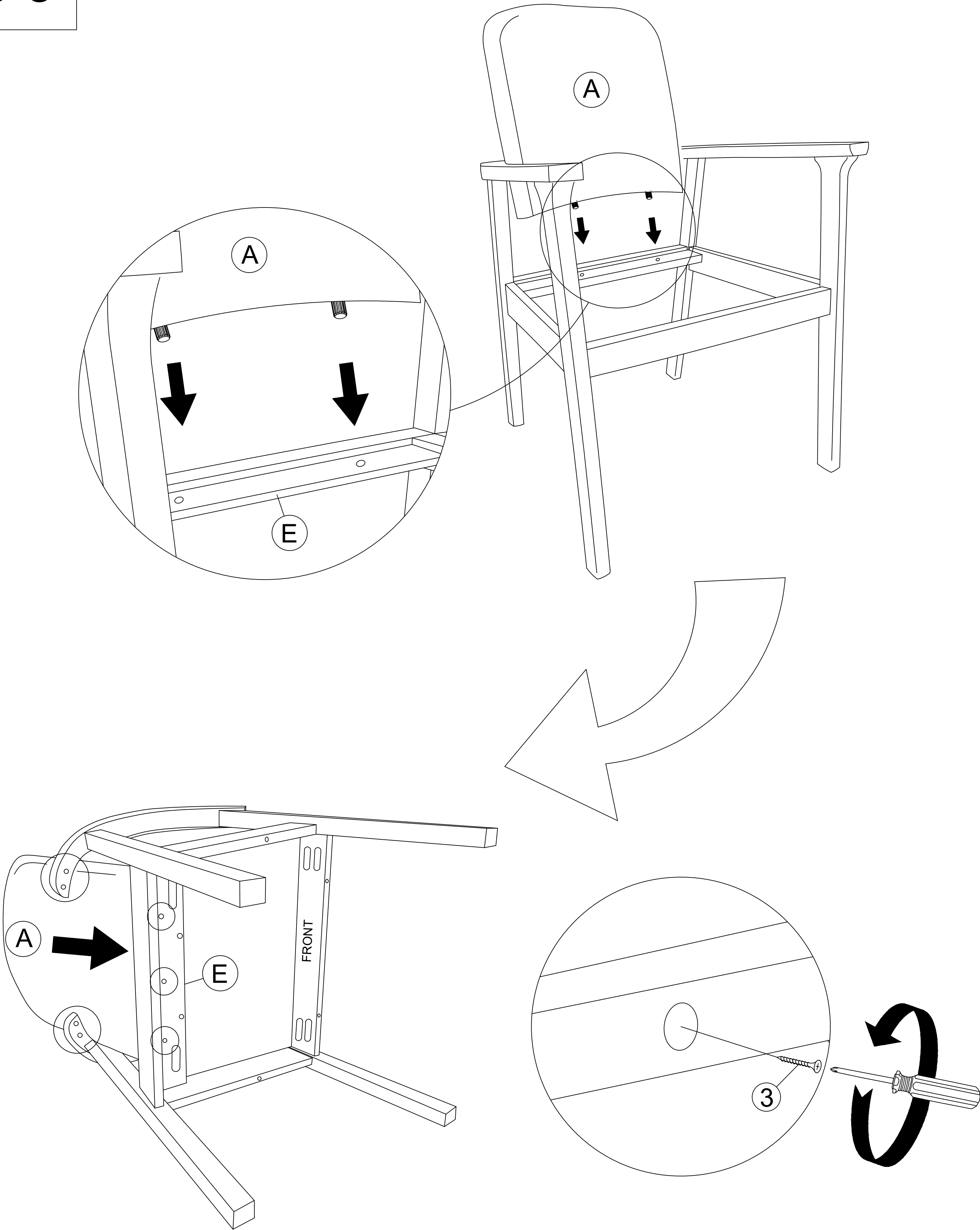


Step 2



ASSEMBLY INSTRUCTIONS

Step 3



Step 4

