



ASSEMBLY INSTRUCTIONS COASTER FINE FURNITURE



Fine Furniture for every stage of life

551702
Corner

ITEM: 551702

ASSEMBLY INSTRUCTIONS



ASSEMBLY TIPS:

1. Remove hardware from box and sort by size.
2. Please check to see that all hardware and parts are present prior to start of assembly.
3. Please follow attached instructions in the same sequence as numbered to assure fast & easy assembly.



WARNING!

1. Don't attempt to repair or modify parts that are broken or defective. Please contact the store immediately.
2. This product is for home use only and not intended for commercial establishments.



ASSEMBLY TIME

5 MINUTES

PARTS IDENTIFICATION

A SEAT



1PC

B LEFT BACK



1PC

C RIGHT BACK



1PC

D RIGHT BACK CUSHION



1PC

E LEFT BACK CUSHION



1PC

F LEG



4PCS

HARDWARE IDENTIFICATION

1 HEX NUT

(Ø5/16"*6mm - RBW)



4PCS

2 FLAT WASHER

(Ø5/16"*16*1.5MM-RBW)



4PCS

3 THREADED BOLT

(Ø5/16"*85MM - RBW)



4PCS

4 WRENCH

(M13*89MM - RBW)



1PC

5 PLASTIC WASHER

(Ø50*2MM - BLK)



4PCS

6 LOCK WASHER

(Ø5/16"*2MM -RBW)



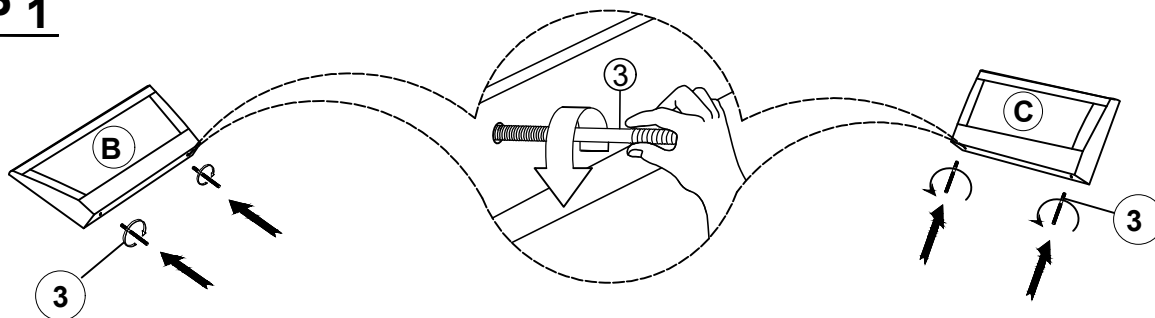
4PCS

ITEM: 551702

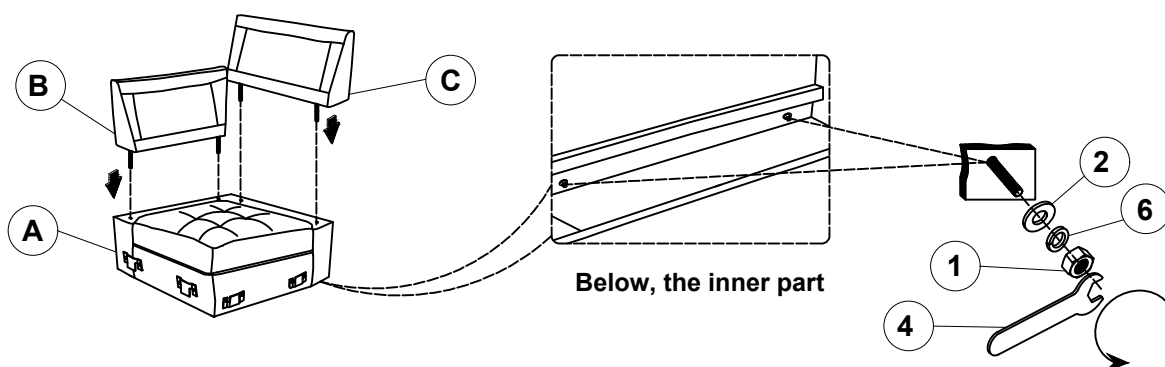
ASSEMBLY INSTRUCTIONS



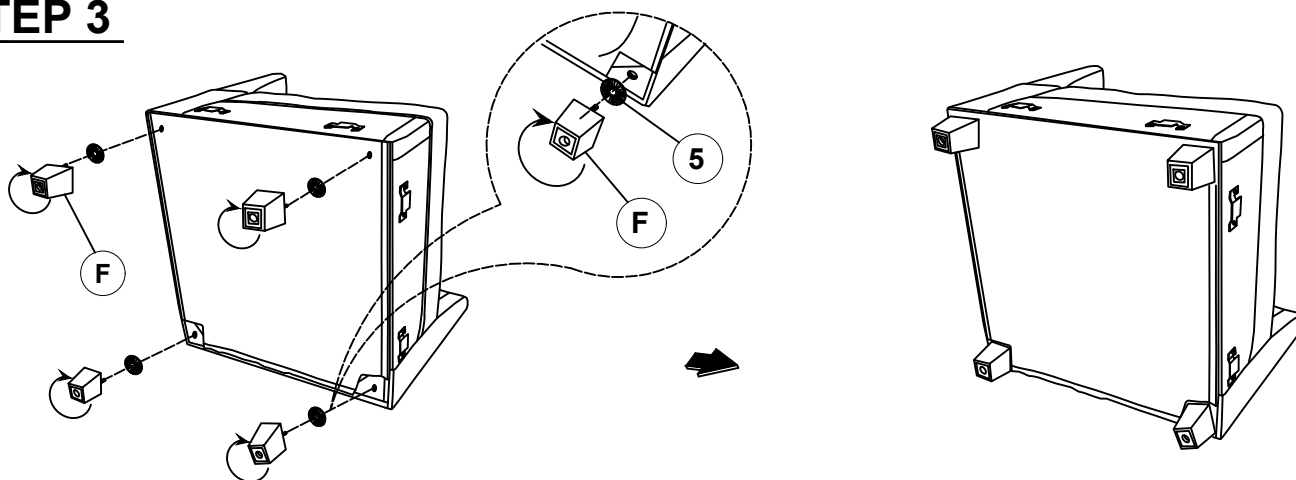
STEP 1



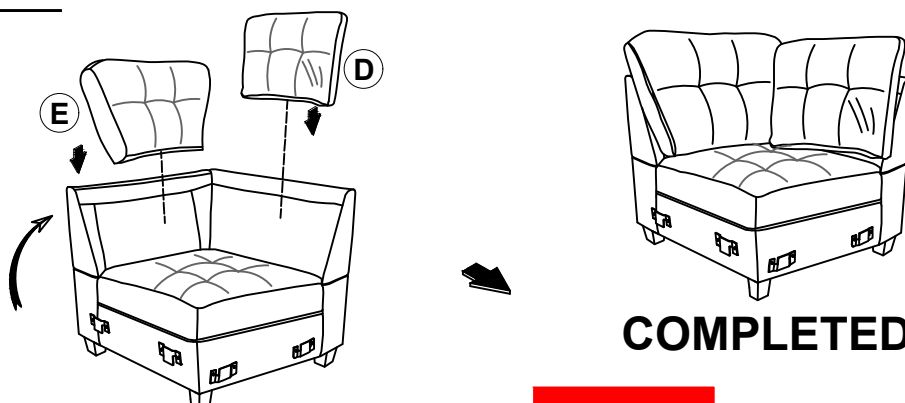
STEP 2



STEP 3



STEP 4



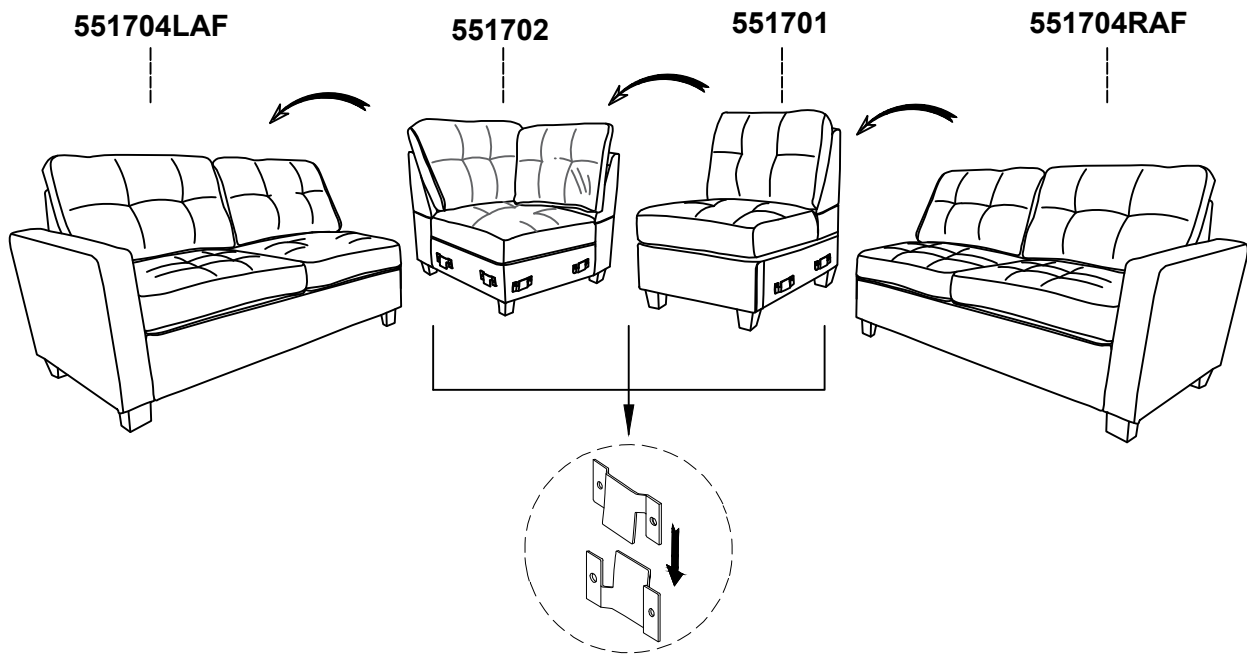
COMPLETED

ITEM: 551702

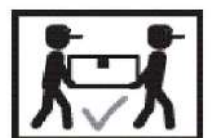
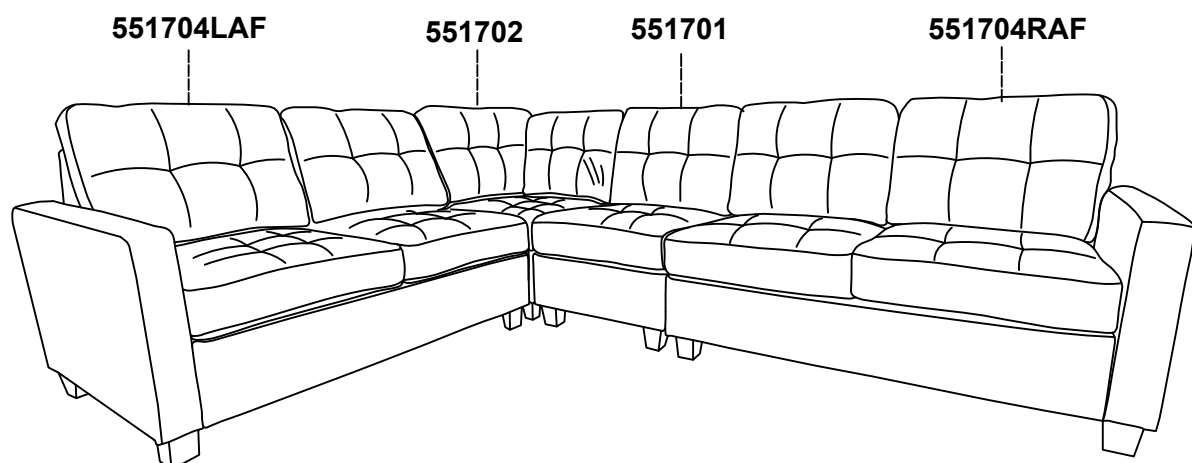
ASSEMBLY INSTRUCTIONS



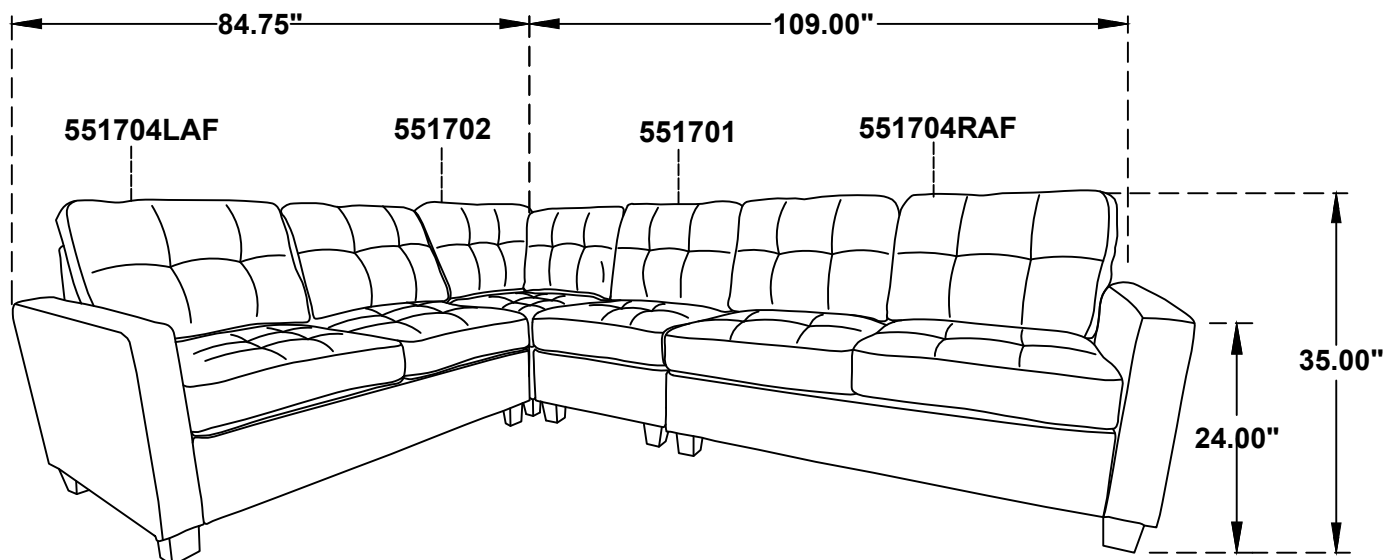
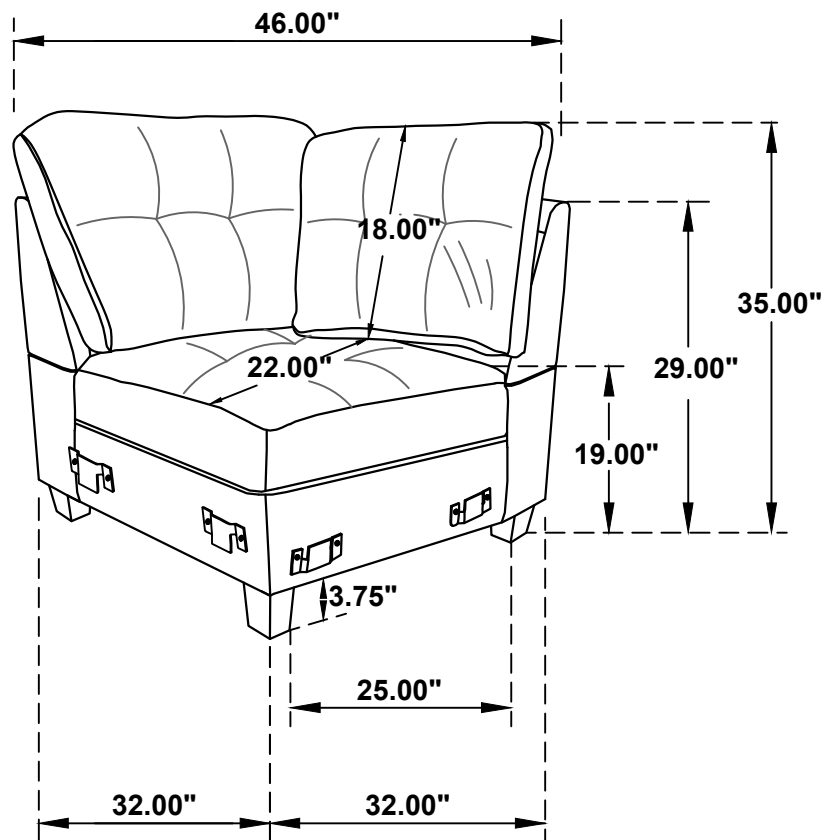
STEP 5



STEP 6



ITEM: 551702



Note: Dimension tolerance $\pm 5\%$



ASSEMBLY INSTRUCTIONS COASTER FINE FURNITURE



Fine Furniture for every stage of life

551704LAF
Laf Loveseat

ITEM: 551704LAF

ASSEMBLY INSTRUCTIONS



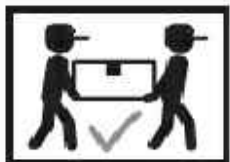
ASSEMBLY TIPS:

1. Remove hardware from box and sort by size.
2. Please check to see that all hardware and parts are present prior to start of assembly.
3. Please follow attached instructions in the same sequence as numbered to assure fast & easy assembly.



WARNING!

1. Don't attempt to repair or modify parts that are broken or defective. Please contact the store immediately.
2. This product is for home use only and not intended for commercial establishments.



ASSEMBLY TIME

10 MINUTES

PARTS IDENTIFICATION

A SEAT



1PC

B LEFT ARM



1PC

C LEFT BACK



1PC

D LEFT BACK CUSHION



2PCS

E LEG



4PCS

HARDWARE IDENTIFICATION

1 HEX NUT

(Ø5/16***6mm - RBW)



7PCS

2 FLAT WASHER

(Ø5/16***16*1.5MM-RBW)



7PCS

3 THREADED BOLT

(Ø5/16***85MM - RBW)



7PCS

4 WRENCH

(M13*89MM - RBW)



1PC

5 PLASTIC WASHER

(Ø50*2MM - BLK)



4PCS

6 LOCK WASHER

(Ø5/16***2MM -RBW)



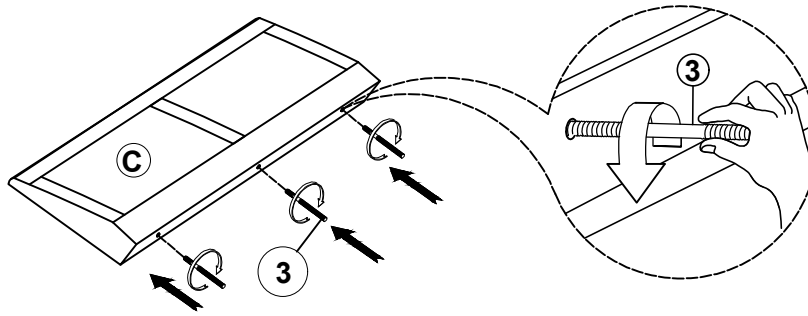
7PCS

ITEM: 551704LAF

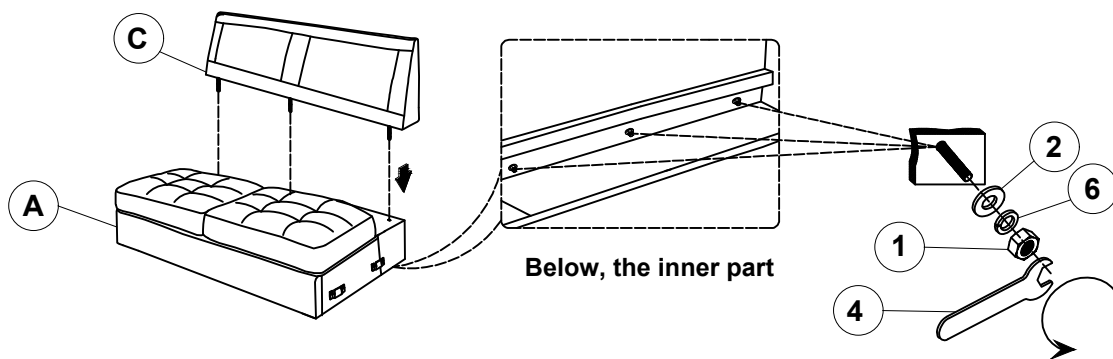
ASSEMBLY INSTRUCTIONS



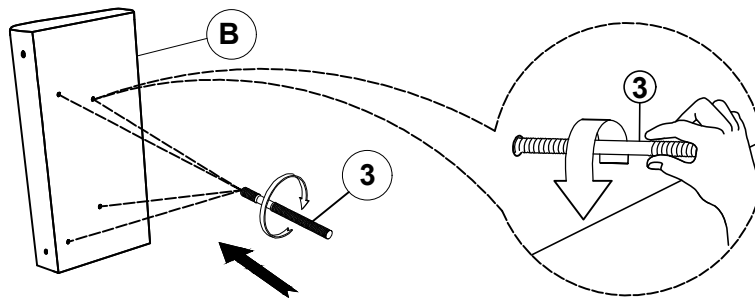
STEP 1



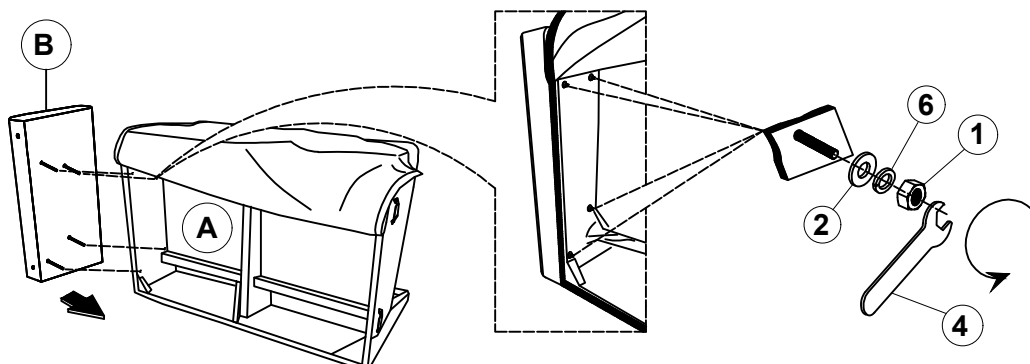
STEP 2



STEP 3



STEP 4

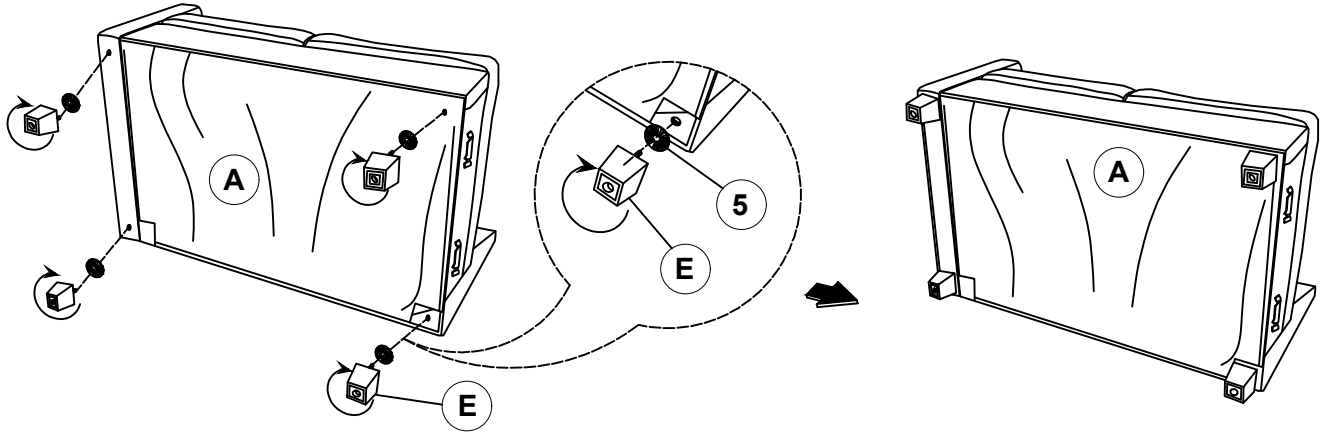


ITEM: 551704LAF

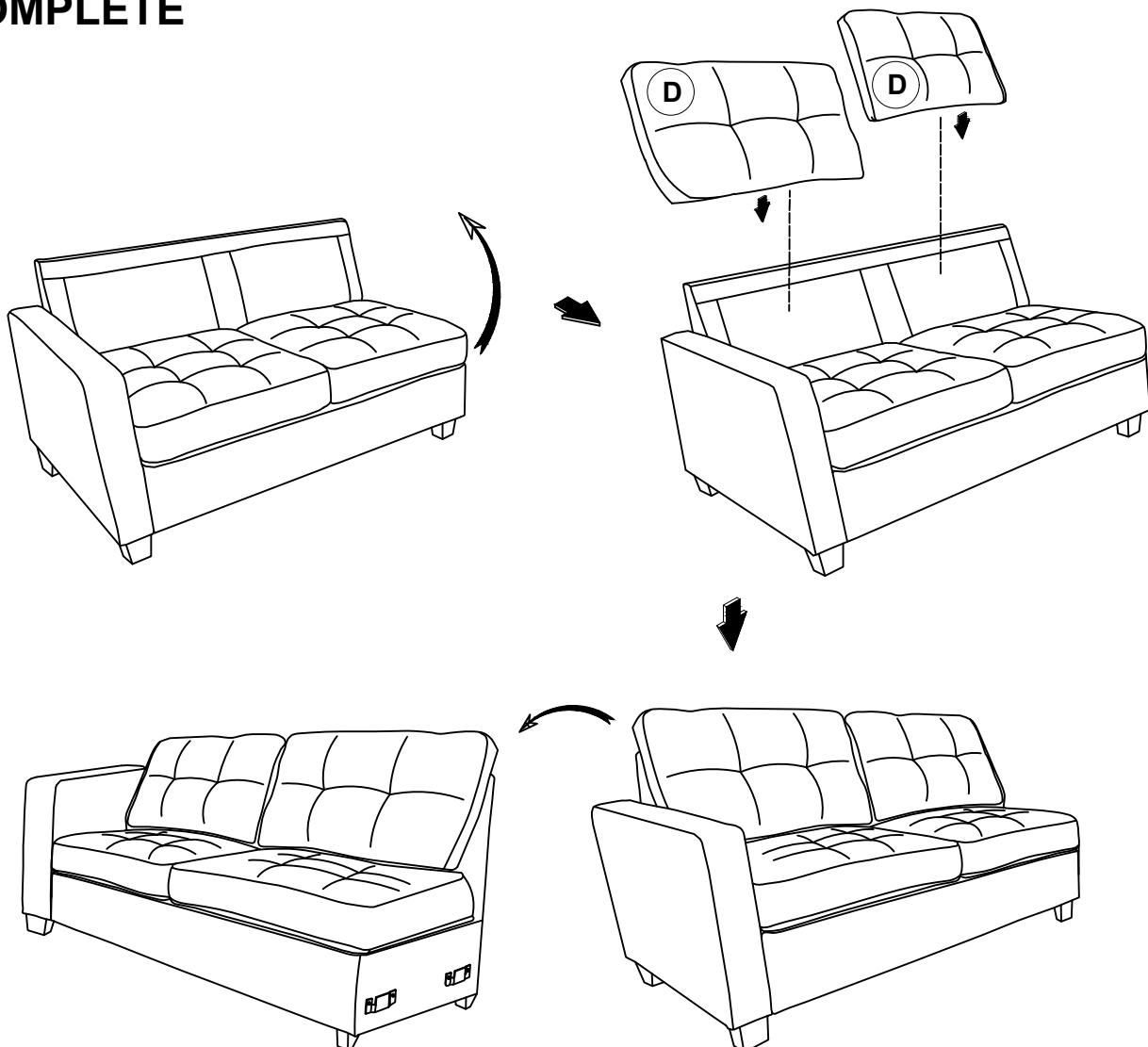
ASSEMBLY INSTRUCTIONS



STEP 5



STEP 6 **COMPLETE**

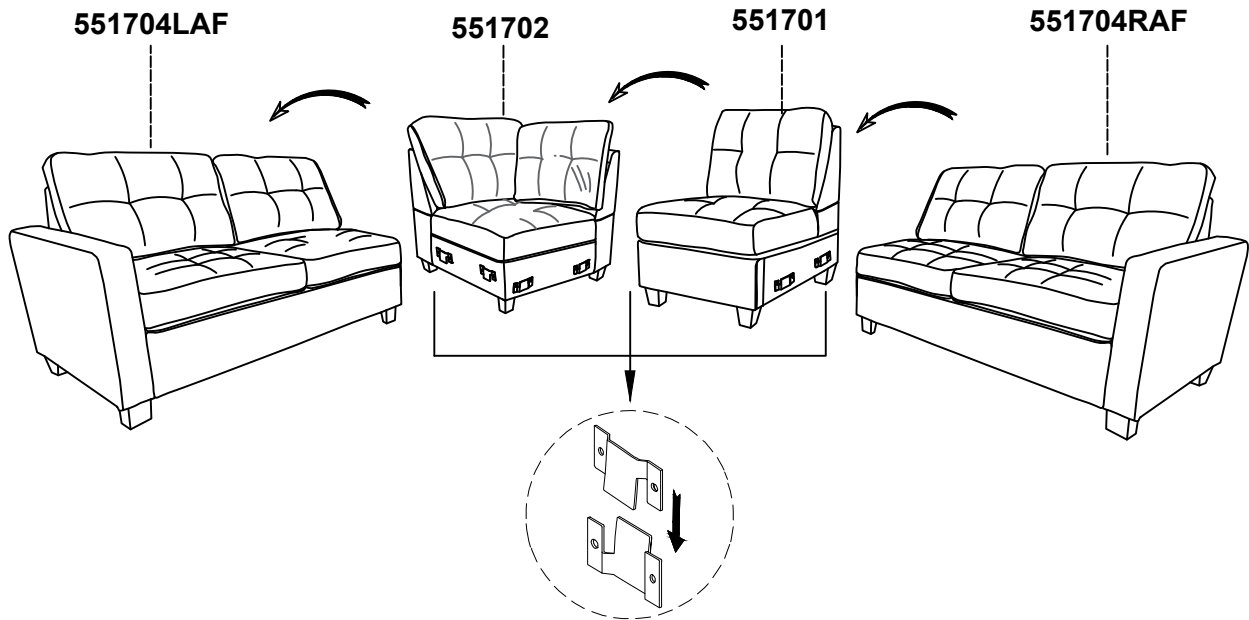


ITEM: 551704LAF

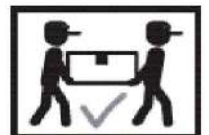
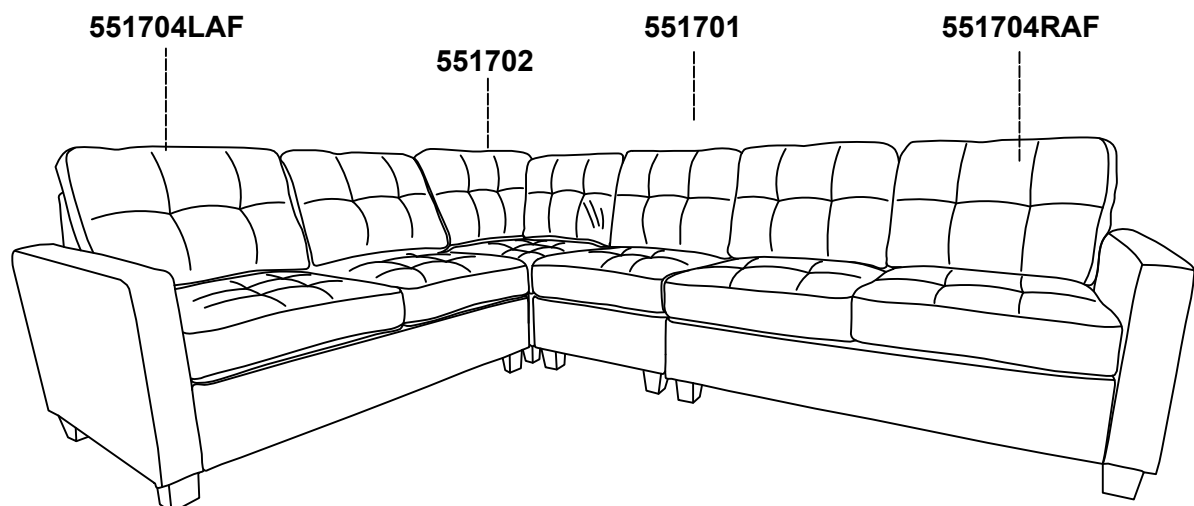
ASSEMBLY INSTRUCTIONS



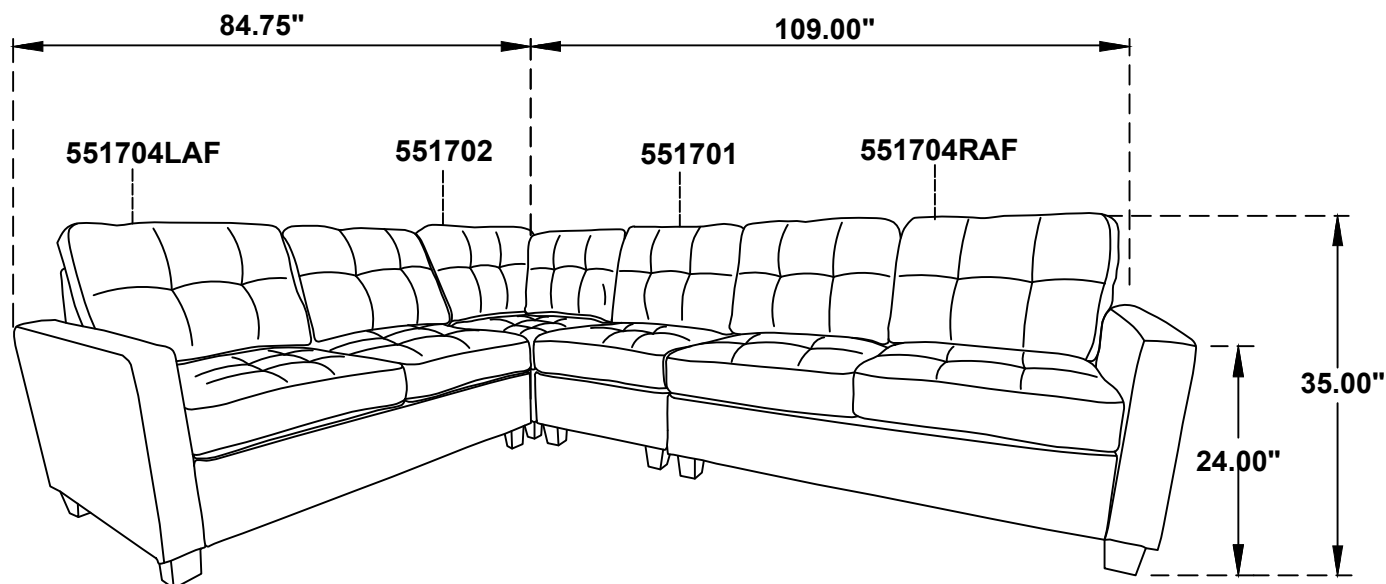
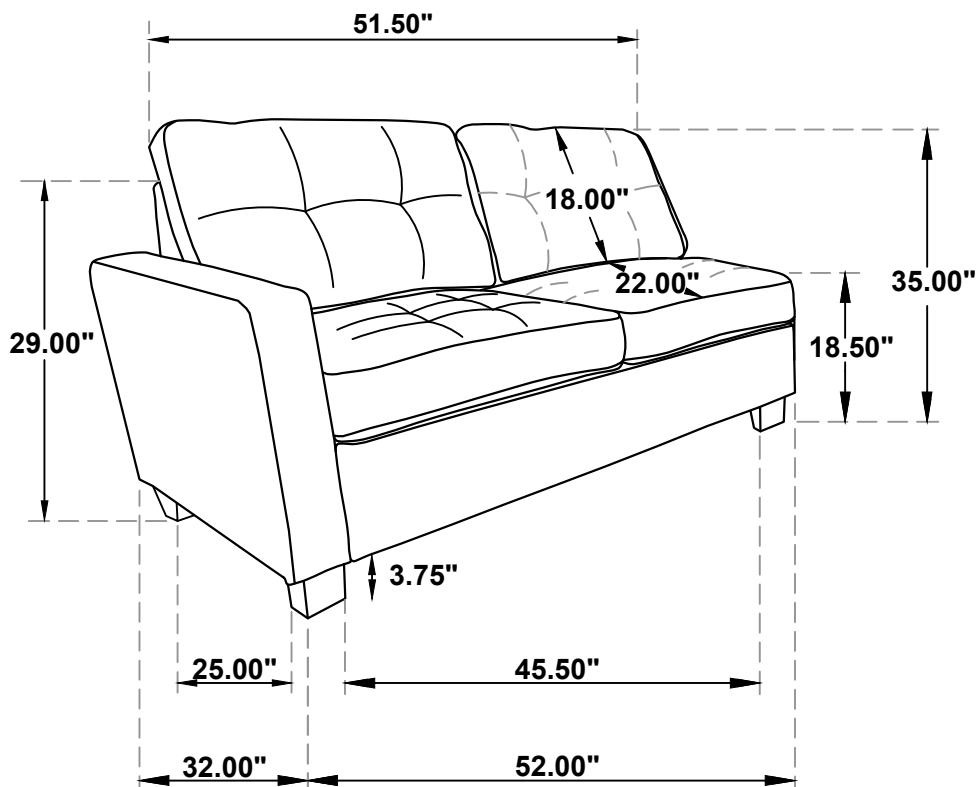
STEP 7



STEP 8



ITEM: 551704LAF



Note: Dimension tolerance $\pm 5\%$



ASSEMBLY INSTRUCTIONS *COASTER FINE FURNITURE*



Fine Furniture for every stage of life

551704RAF
Raf Loveseat

ITEM: 551704RAF

ASSEMBLY INSTRUCTIONS



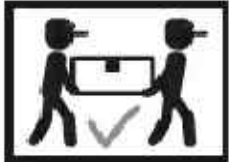
ASSEMBLY TIPS:

1. Remove hardware from box and sort by size.
2. Please check to see that all hardware and parts are present prior to start of assembly.
3. Please follow attached instructions in the same sequence as numbered to assure fast & easy assembly.



WARNING!

1. Don't attempt to repair or modify parts that are broken or defective. Please contact the store immediately.
2. This product is for home use only and not intended for commercial establishments.



ASSEMBLY TIME

10 MINUTES

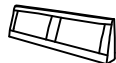
PARTS IDENTIFICATION

A SEAT



1PC

C RIGHT BACK



1PC

E LEG



4PCS

B RIGHT ARM



1PC

D RIGHT BACK CUSHION



2PCS

HARDWARE IDENTIFICATION

1 HEX NUT

(Ø5/16"*6mm-RBW)



7PCS

3 THREADED BOLT

(Ø5/16"*85MM-RBW)



7PCS

5 PLASTIC WASHER

(Ø50*2MM-BLK)



4PCS

2 FLAT WASHER

(Ø5/16"*16*1.5MM-RBW)



7PCS

4 WRENCH

(M13*89MM-RBW)



1PC

6 LOCK WASHER

(Ø5/16"*2MM-RBW)



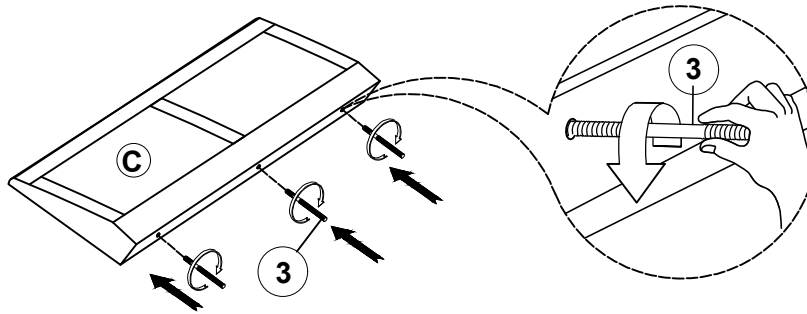
7PCS

ITEM: 551704RAF

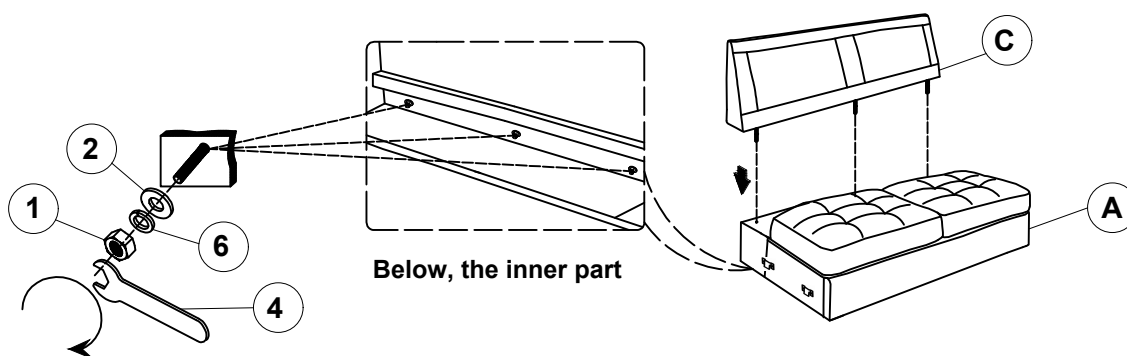
ASSEMBLY INSTRUCTIONS



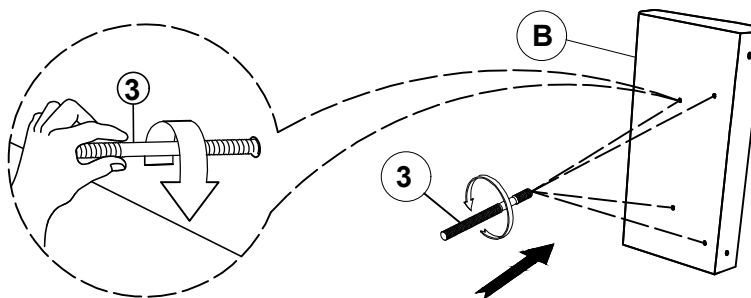
STEP 1



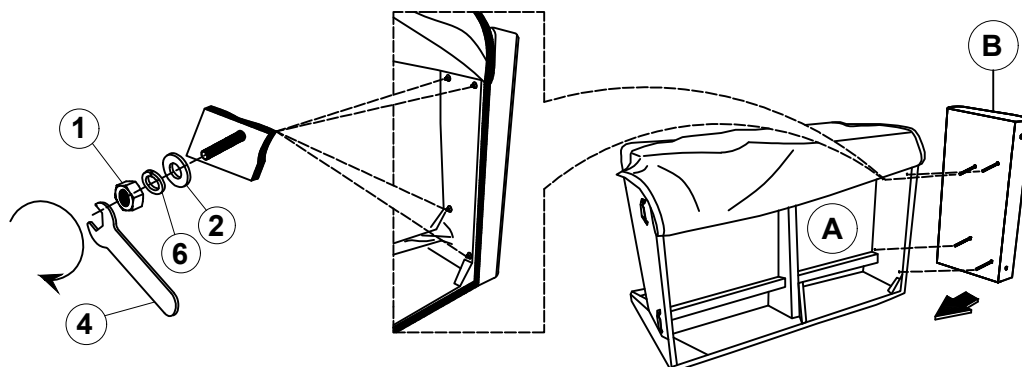
STEP 2



STEP 3



STEP 4

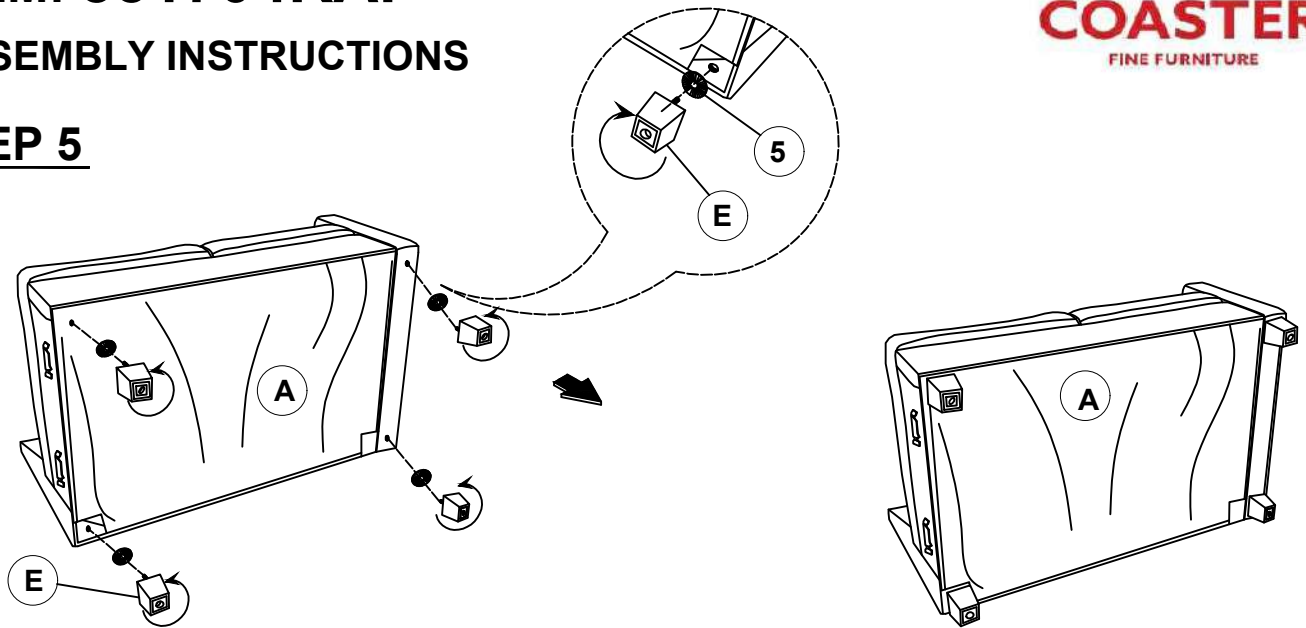


ITEM: 551704RAF

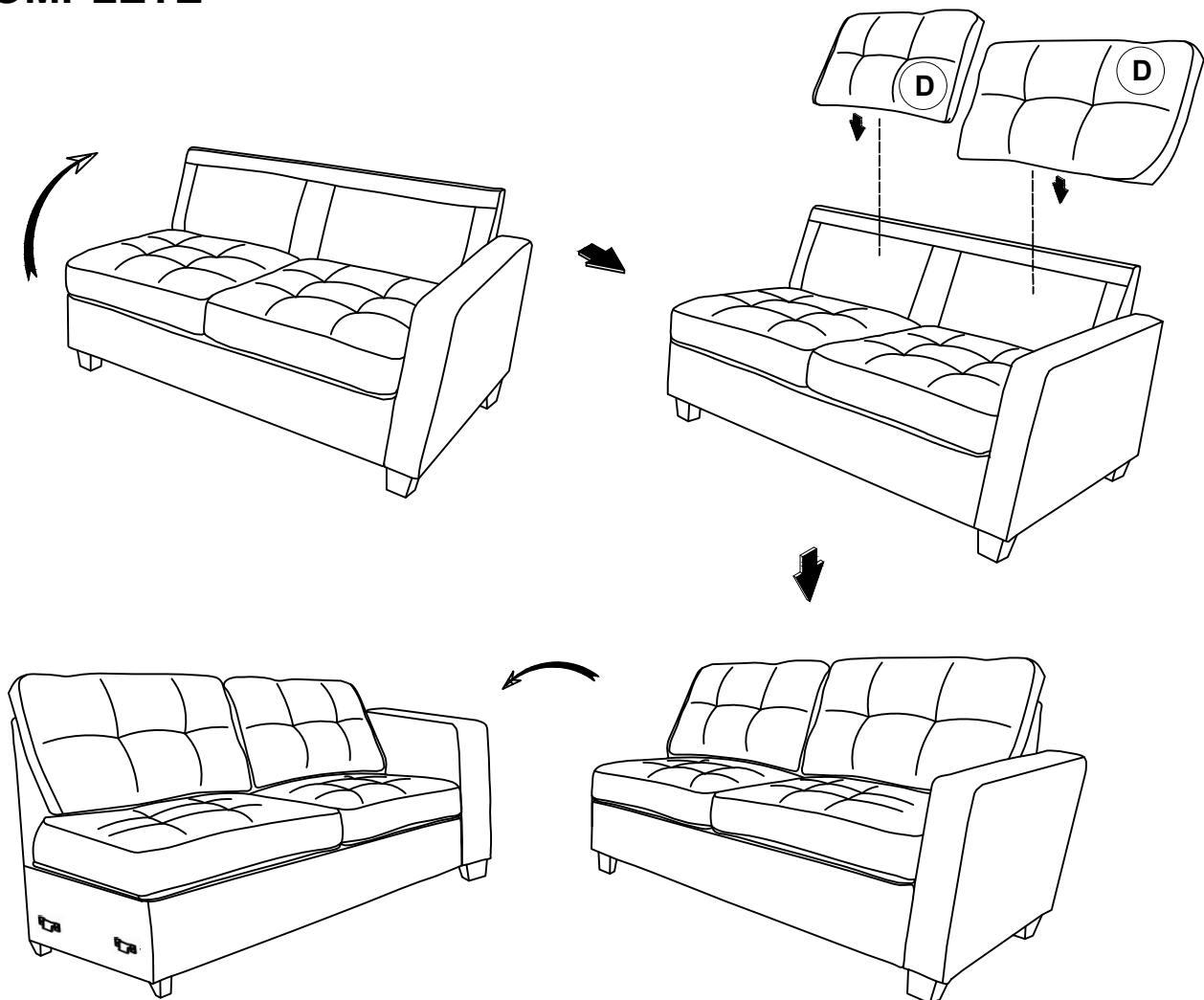
ASSEMBLY INSTRUCTIONS



STEP 5



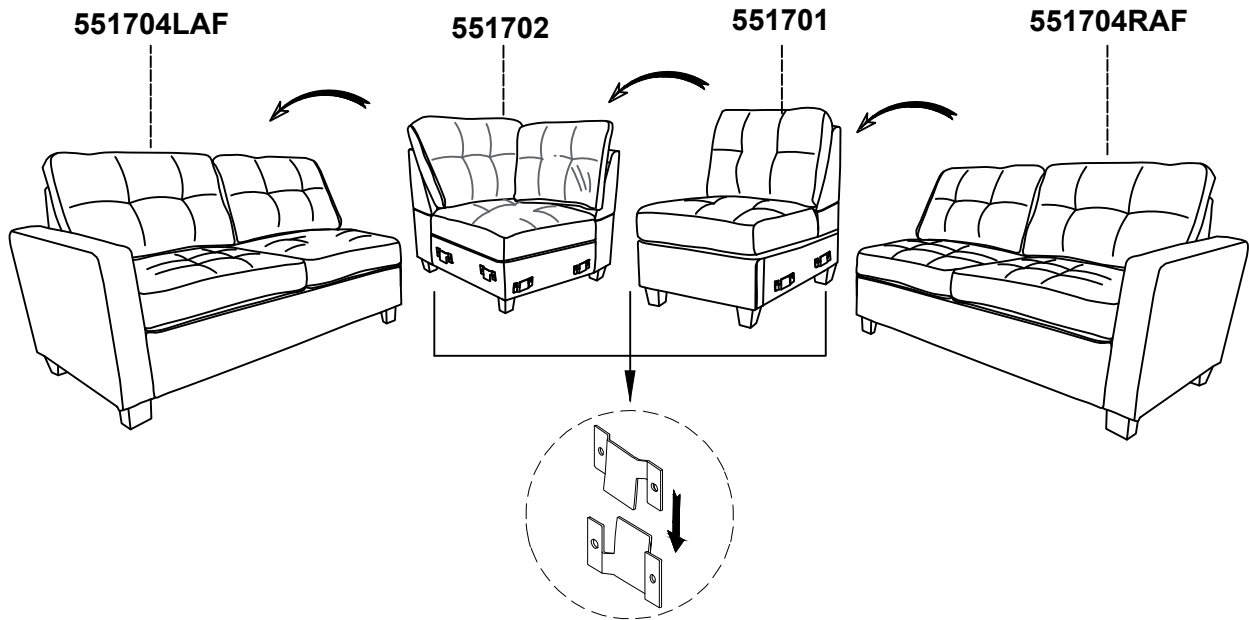
STEP 6 **COMPLETE**



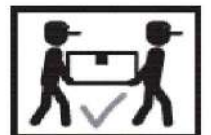
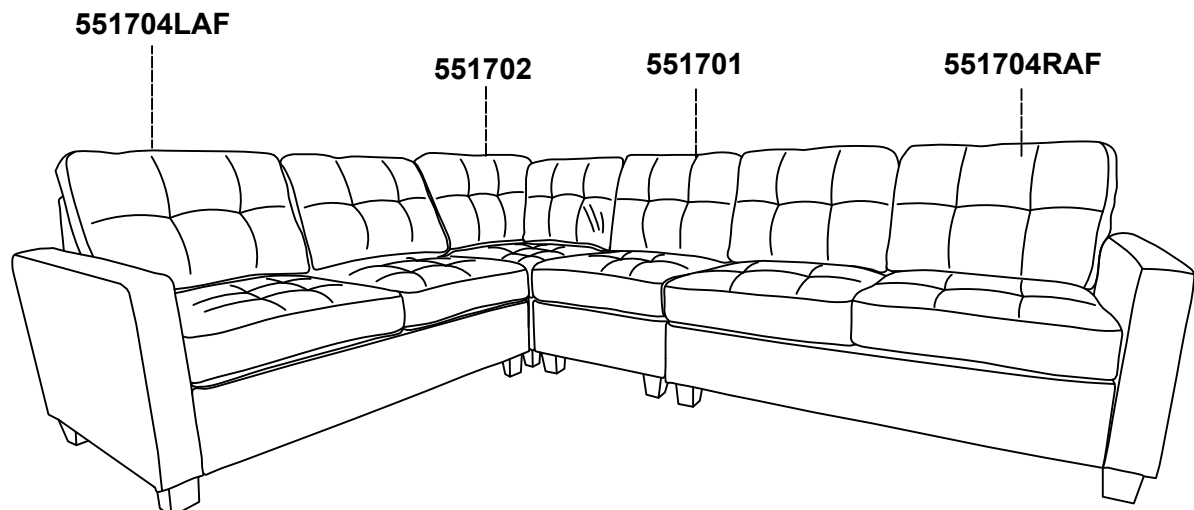
ITEM: 551704RAF

ASSEMBLY INSTRUCTIONS

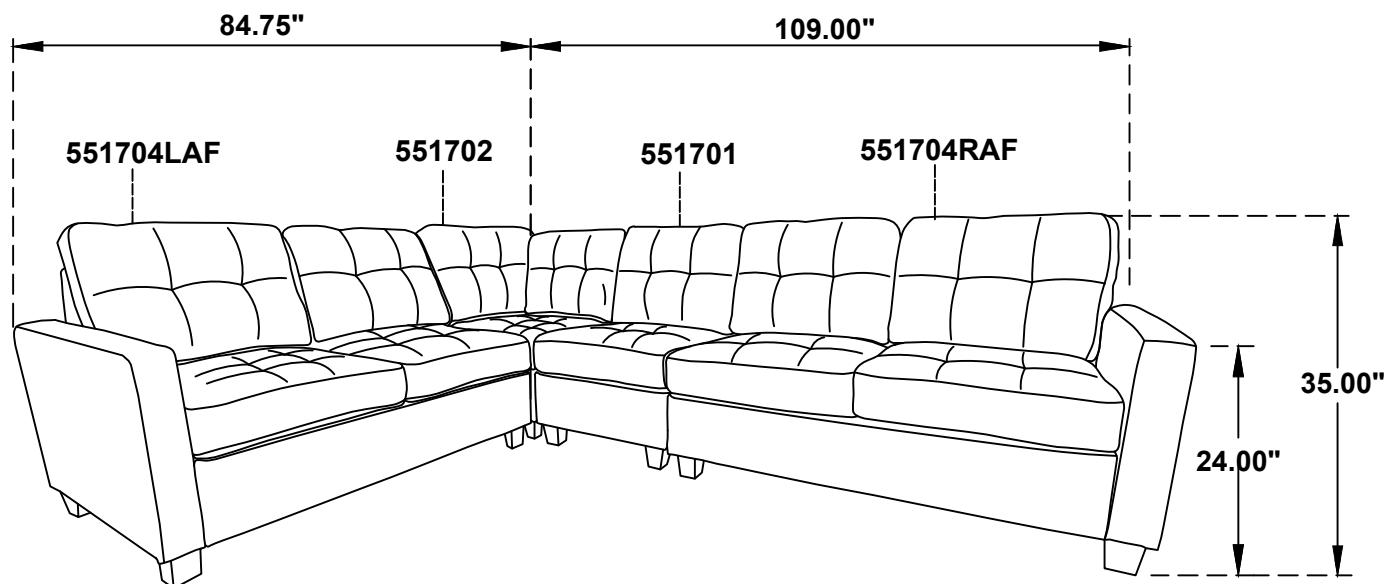
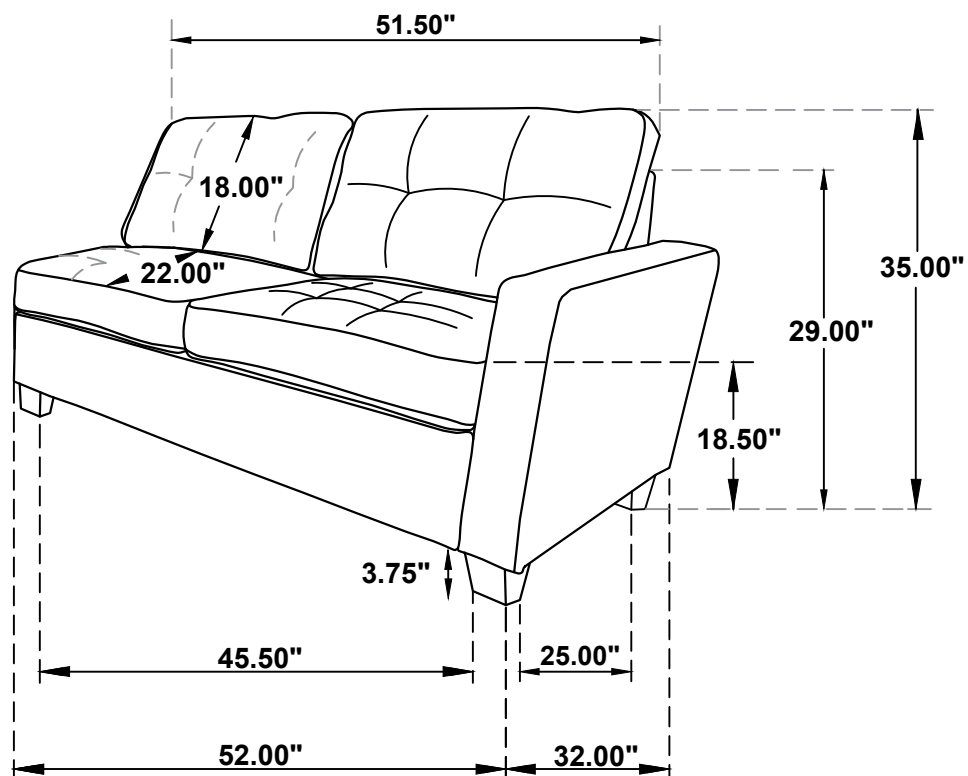
STEP 7



STEP 8



ITEM: 551704RAF



Note: Dimension tolerance $\pm 5\%$