



## WARNING!

1. This toy may have potentially sharp edges or sharp points or small edges before assembly Parts, so must be assembled by adults.
2. Use the car properly under the supervision of an adult.  
Otherwise, you may injure yourself or a third party.
- 3, it is strictly prohibited in public streets, roads, slopes, swimming pools and other dangerous places Driving to play, otherwise it may cause traffic accidents and drowning risks.
- 4, contains small parts, not suitable for children under 3 years old.
5. This product is only suitable for children aged 37 months and above.  
Before use Please wear protective equipment, such as helmets, hand pads, knee pads, etc.
- 6, the car can not be overloaded, the maximum load capacity of 30 kg.
- 7, chargers and batteries, wires, plugs and other components must be regular Check whether it is damaged, and stop using it when it is found damaged until it is repaired.
8. Keep away from fire.
- 9, please read the product manual carefully before operation, it is very important and please Keep it for future reference.

## Electric tricycle for children Installation and use instructions

Age: Children 37 months and above

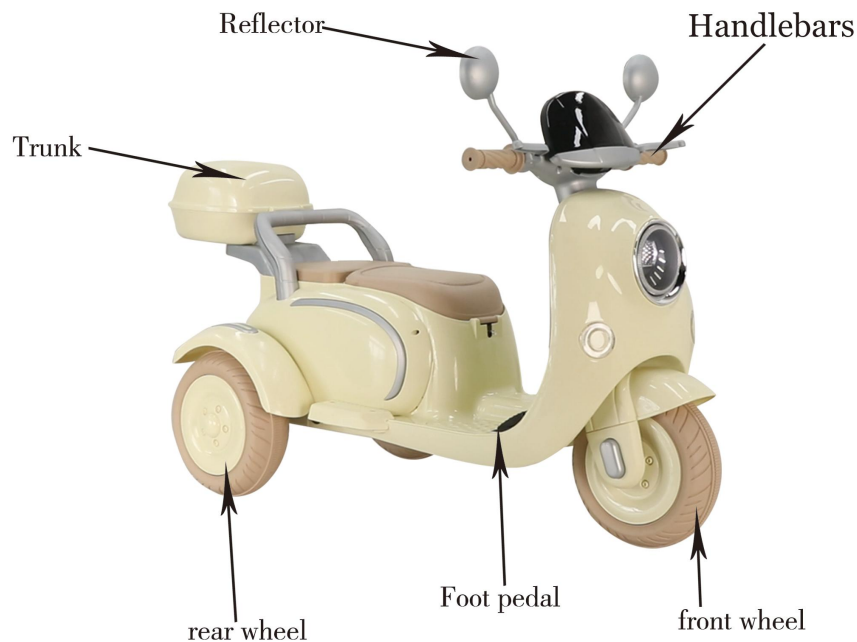
If you have any question,  
please contact at [L843485741@outlook.com](mailto:L843485741@outlook.com) directly.



# Specification parameter

Age of use:	Children 37 months and older	Battery :	6V/12V
Load limitation:	30kg	Outline size:	1200*510*690mm
speed:	3~5km/h	Power supply mode:	Charging type
Charger specification:	input: 220V output: DC6V0.5A\DC12V0.5A	Battery life:	Charging times are about 280
Charging time:	About 8–12 hours	Fuse:	Self–resetting fuse

## Product sketch



## Maintenance and maintenance:

- After normal use of this product, adults should regularly (half a month is recommended) the main components of this afternoon, such as: Batteries, chargers, wires, enclosures, switches, steering systems and other components shall be inspected, and fastening components shall be exhausted. See if it is loose and stop using it until it is repaired when potential danger is found.
- Clean vehicles can be wiped with soft cloth which is slightly wet and dripless, or with non-waxy furniture polishing instead of soft cloth polishing. Material parts to achieve surface finish effect. Do not wipe the plastic parts of toys with chemical solvents. Avoid Corrosion; do not use soap and water to clean vehicles, water will damage motors, batteries, resulting in short circuit circuit circuit system.
- After using for a period of time, please lubricate the iron parts of the vehicle with lubricating oil to prevent rusting.
- Cars should be kept away from high temperature and humidity. Plastic parts can melt. When charging, keep away from inflammable goods, prevent Stop cattle fire.
- Please charge it in time after use. It must be operated by adults. If it is collected or not used for a long time, it must be filled first. Electricity is stored and recharged every month to extend battery life.
- When you stop using or place the car for a long time, please cut off the power supply of the car. All switches to "stop" Or "close" position. No unauthorized alteration of the product's structure and circuit system, maintenance and maintenance of key parts shall be allowed. Replacement should be conducted under the guidance of professionals.
- In areas where the supply voltage is unstable, it is recommended to install a power regulator to protect the battery when charging. Do not use fuses that do not conform to product specifications.

## Simple maintenance:

fault type	Cause analysis	Elimination method
The car won't move.	1. Battery voltage is too low 2. Fuse protection 3. Wheel nuts fall off 4. Battery Connector Shedding 5. The battery is broken. 6. Electrical damage 7. Bad motor	1. Charging Batteries 2. Stop for a few minutes and use it 3. Re–screw the nut 4. Re–insert 5. Replace new batteries 6. Maintenance at maintenance points 7. Maintenance at maintenance points
Batteries do not charge	1. The connector on the battery is off. 2. Charger is not electrified 3. The charger is broken.	1. Re–insert 2. Re–insert 3. Replacement of chargers
Short range	1. Batteries are not charged 2. Batteries are old	1. Recharge the battery 2. Replacement of batteries
There is a slight noise and heat when charging.	1. belong to chemical reaction	normal
Slow speed	1. battery old 2. Batteries are dead 3. overload 4. Road unevenness	1. Replacement of new batteries 2. Recharge the battery 3. Reduce the load to less than 30 kg 4. Drive on flat ground
Noise in gearbox	1. The gear is broken.	1. Maintenance point maintenance
The car wobbled as it went along.	1. Poor contact of motor connection wire 2. There is a dead point on the motor.	1. Reconnect 2. Maintenance of Maintenance Points

## Charge:

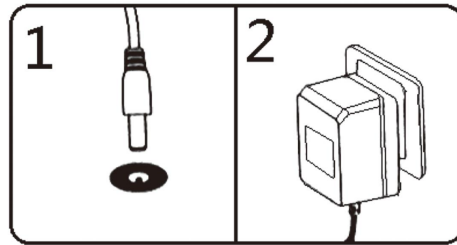
Power must be turned off when charging.

The charging seat is under the seat cushion.

Open the protective cover on the charging hole, and

The charger plug is inserted into the socket of the charger socket.

Then insert the charger into the power outlet.



## Points for Attention in Charging:

1 Charging must be done by an adult.

2 In the first use of electric vehicles, it is necessary to ensure that the battery is charged for 4–6 hours, otherwise the oil will damage the battery and cannot be repaired.

3 Please turn off the power when charging, first plug the charger into the charging hole, and then plug the charger into the power socket, the vehicle cannot be operated when charging.

4 When the battery is low, please charge it in time, the normal charging time is 8–12 hours, but not more than 15 hours.

5 It is normal for the battery to heat up during charging, but if the temperature is too high, it should be checked in time. Check whether the charging current is too high or the battery is short circuited.

6 There is water in the charging jack can not be charged, otherwise it will cause short circuit.

7 Only the chargers and batteries configured by the car are allowed to be used, and the use of other brands of chargers and batteries is strictly prohibited, otherwise it may damage the charger and battery box lines of the car.

8 If the product is collected or not used for a long time, it must be fully charged and charged within a month. Second, ensure the battery life.

## Packing Diagram



Product specifications	1	Rear trunk	1
The body of the car	1	The head of the car	1
The saddle	1	Rear mud board	2
Charger	1	The front wheel	1
Kit	1	Sitting bucket	1
The rear wheel	2		

## Usage method ( "Please check that the power switch is turned on correctly first. )

Manual function: ( Note: There is no high and low speed switch in single drive. )

### Forward:

1. Put forward/backward switch to forward position;
2. Push the pedal switch gently and the car will move forward.

### Stop it:

Lift your foot and release the "pedal barrier" and the vehicle will stop moving.

### Back off:

1. Put forward/backward switch to backward position.
2. Push the pedal switch gently and the car will move backwards.

### Warning!

When shifting gears, make sure that the vehicle has stopped completely to avoid damage to gearboxes and motors.



## Rear wheel mounting

Take off the rear axle under the car body, put the rear axle through the body, install the gear, cover the rear wheel, steel pad and screw fix. Finally clamp on the wheel cover. The rear wheel mounting method is the same on both sides.



## Install rear fender

Clamp the rear fender into the corresponding position of the car body, and fix the two ends with screws



## Handlebar mounting

Push the front fork through the body and the handlebars through the front axle onto the body with the gasket screws Fixed, finally card on the decorative pieces can be



## Install mirrors, windshields, pedals

Clamp the mirror into the corresponding position of the handlebars (pay attention to distinguish between the left and right) Clamp the windshield on the handlebars according to the following position, install the foot on both sides of the body, and fix the screw (pay attention to distinguish between the left and right)



## Install rear plate, rear armrest, rear trunk

Install the rear plate to the rear of the car body first, fix the bottom with 4 screws, insert the rear armrest directly into the corresponding position, and push the rear trunk forward and clamp it tightly according to the position below



## Install the storage box and connect the power supply

Put the storage box directly into the body (forward can be used as storage, reverse can be used as backrest) open the seat plate, take off the white power protection cap, align the black plug with the red socket of the battery and insert it, turn on the power button to test that the power supply is normal

