

## PRECAUTIONS AND WARNINGS

1. Please fully charge before the first use, only use the charger and battery specified by the manufacturer.
2. Charge for 9-10 hours each time, and the charging time shall not exceed 15 hours.
3. When the speed is obviously slow, it should be charged. In order to avoid excessive discharge, Affect the battery life.
4. When the car is not in use, it must be fully charged and charged every two months to avoid battery damage.
5. In the process of charging, the charger and battery will be slightly warm, which is a normal phenomenon.
6. Please don't discard, burn or disassemble waste batteries at will, so as to avoid environmental pollution.
7. Charging must be done by adults, away from fire.

## CHARGING PRECAUTIONS

1. Please drive on a level and good ground.  
Do not use it in dangerous areas such as streets, roads and slopes.
2. The car should be installed by adults. In order to avoid the injury of small parts, Children under three years old are forbidden to use it.
3. Don't use it in water, and don't pour water and other liquids on the car.  
It's not suitable to drive in rainy days.
4. Children must ride under the guidance of adults,  
And their caretakers are not allowed to leave during riding.
5. To avoid harm to children,  
Please keep plastic bags and other packaging materials away from children!
6. Do not mix alkaline, standard (carbon zinc) or rechargeable battery.
7. Do not use the fuse that does not conform to the specification,  
And do not change the circuit of the vehicle or add the live device.
8. The car cannot be overloaded and can only be ridden by one person.
9. Please regularly check whether each part is damaged.  
If it is damaged, stop using until it is repaired.
10. In order to improve the quality of the product,  
The structure and appearance of part of the product may be changed,  
Subject to the actual object in the box, Please understand.

## PACKING LIST



## CHILDREN ELECTRIC MOTOR

# INSTALLATION INSTRUCTIONS

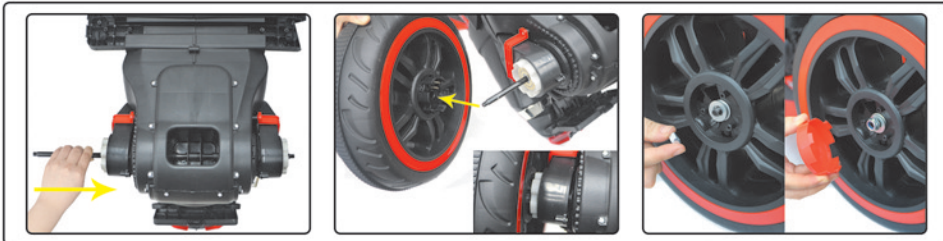


Please read the manual carefully before use.

# INSTALLATION STEPS



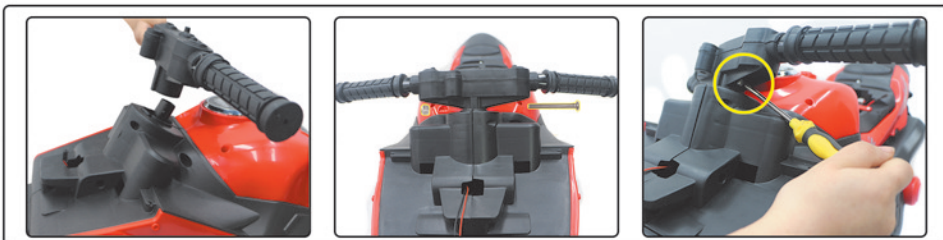
**1. Install the pedal:** Connect the pedal line with the body line, and install the left and right pedals.



**2. Install the rear wheel:** insert the long shaft into the vehicle body, and install the rear wheel. Gaskets, anti-skid caps and wheel covers are installed on both sides in the same way.



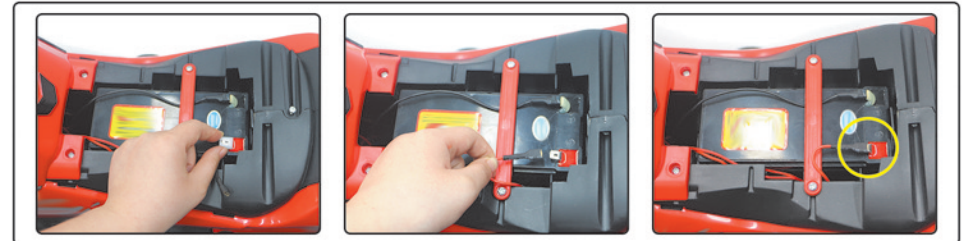
**3. Install the front wheel:** Connect the front wheel line with the body line; Penetrate into the body hole; Install the wheel covers on both sides.



**4. Installation of handlebars:** Install handlebars; Insert screws and nuts; Tighten the fixing.



**5. Installation of car head:** Connect the car head line with the body line; Push the mounting head into place and tighten the screws on both sides.



**6. Connect the battery line:** Remove the white protective sleeve; Connect the red wire to the body red terminal.



**7. Mounting base plate:** Remove the pre installed screws of the vehicle body; Install the base plate and tighten it with screws.



**8. Installation of reflector:** Align both sides with the hole position and install it.

**9. Installation completed**