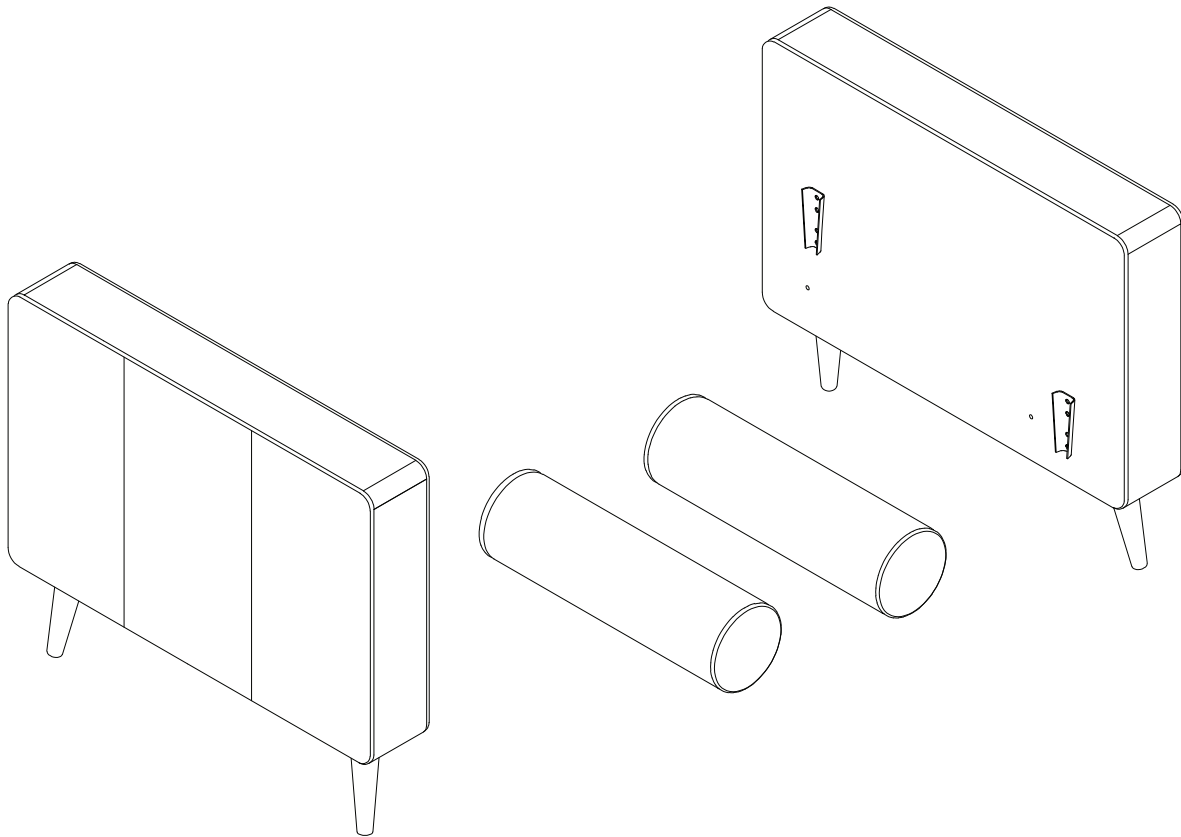


Let's build the

# Breeze Sofa Arms

SKU 28120



**Scan me!**

Free Lifetime  
Warranty

nathan james

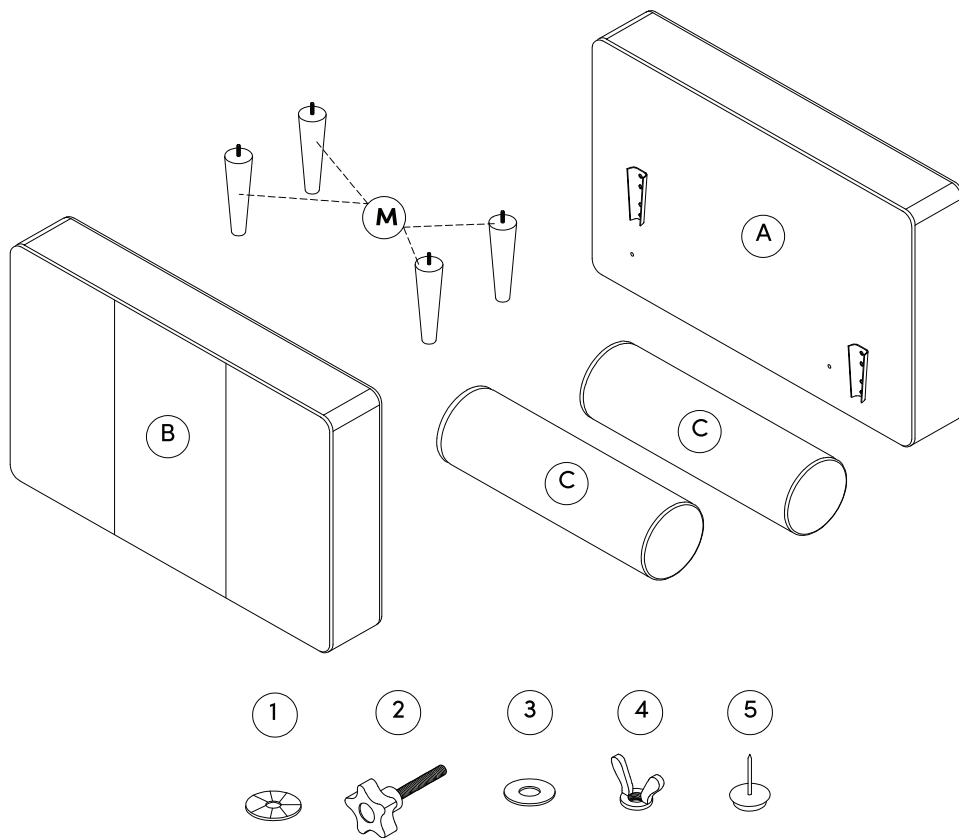
25-0514-VN

# 28120

## Contents

(per carton)

Description		Qty
A	Arm Sub-Assembly (Right)	01
B	Arm Sub-Assembly (Left)	01
C	Bolster Pillow	02
M	Side Leg	04
1	Plastic Washer	04
2	Ø5/16" x 60mm Thumb Screw	02
3	Ø5/16" x 19mm Flat Washer	04
4	Ø5/16" Wing Nut	02
5	Plastic Nailhead Feet (Extra)	04



### IMPORTANT NOTE:

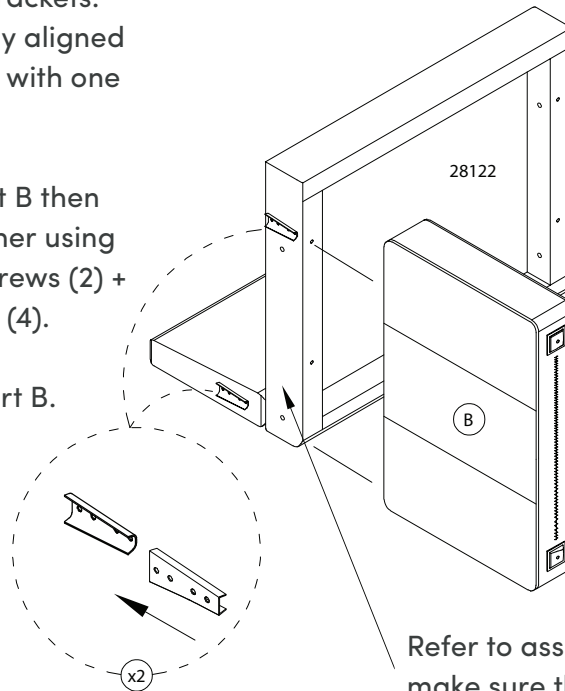
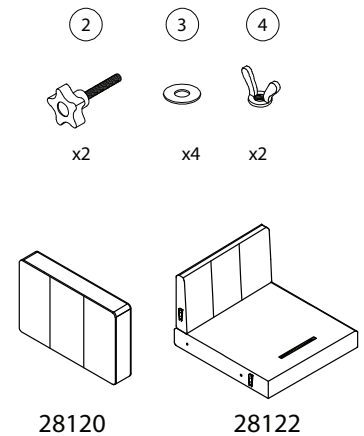
Review the following pages to find instructions for attaching your Breeze Sofa Arms to each Breeze Sofa Seat type.

# Left Arm & Single Seat

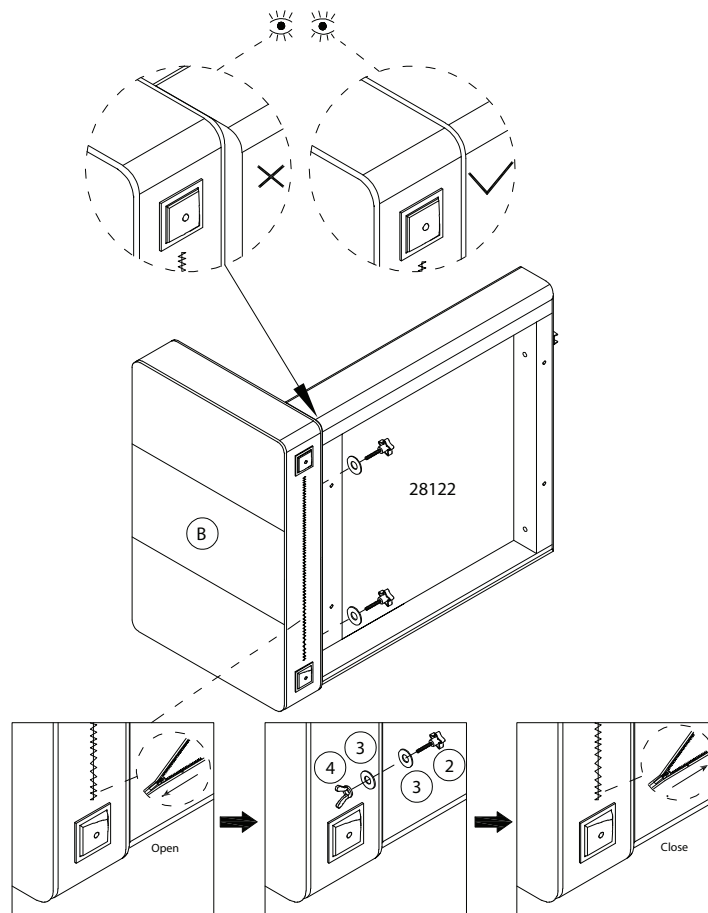
Join the Arm (Left) (B) & the Single Seat (28122) using their tapered brackets. Be sure that they are properly aligned and the components sit flush with one another once complete.

Next, open the zipper on Part B then secure Part B & Part H together using Flat Washers (3) & Thumb Screws (2) + Flat Washers (3) & Wing Nuts (4).

Lastly, close the zipper on Part B.



Refer to assembly packet from 28122 to make sure that your seat is assembled properly before moving forward.

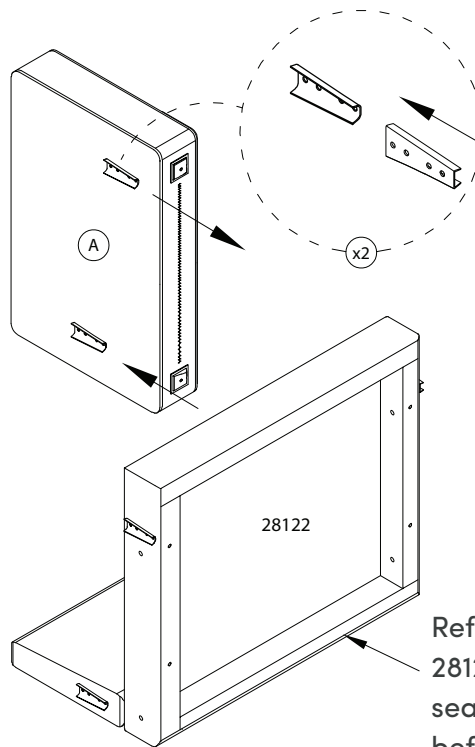
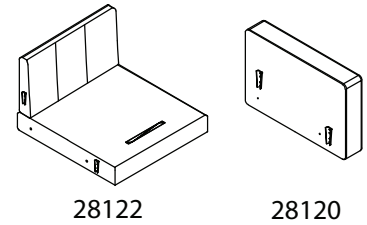
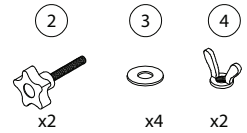


# Right Arm & Single Seat

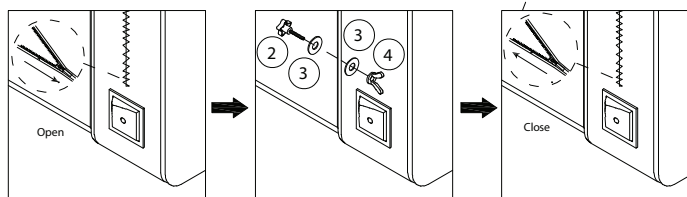
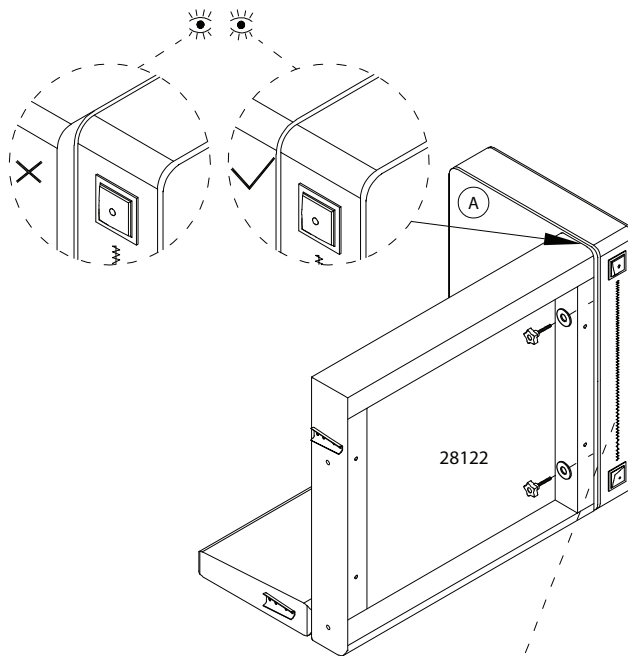
Join the Arm (Right) (A) & the Single Seat (28122) using their tapered brackets. Be sure that they are properly aligned and the components sit flush with one another once complete.

Next, open the zipper on Part A then secure Part A & Part H together using Flat Washers (3) & Thumb Screws (2) + Flat Washers (3) & Wing Nuts (4).

Lastly, close the zipper on Part A.



Refer to assembly packet from 28122 to make sure that your seat is assembled properly before moving forward.

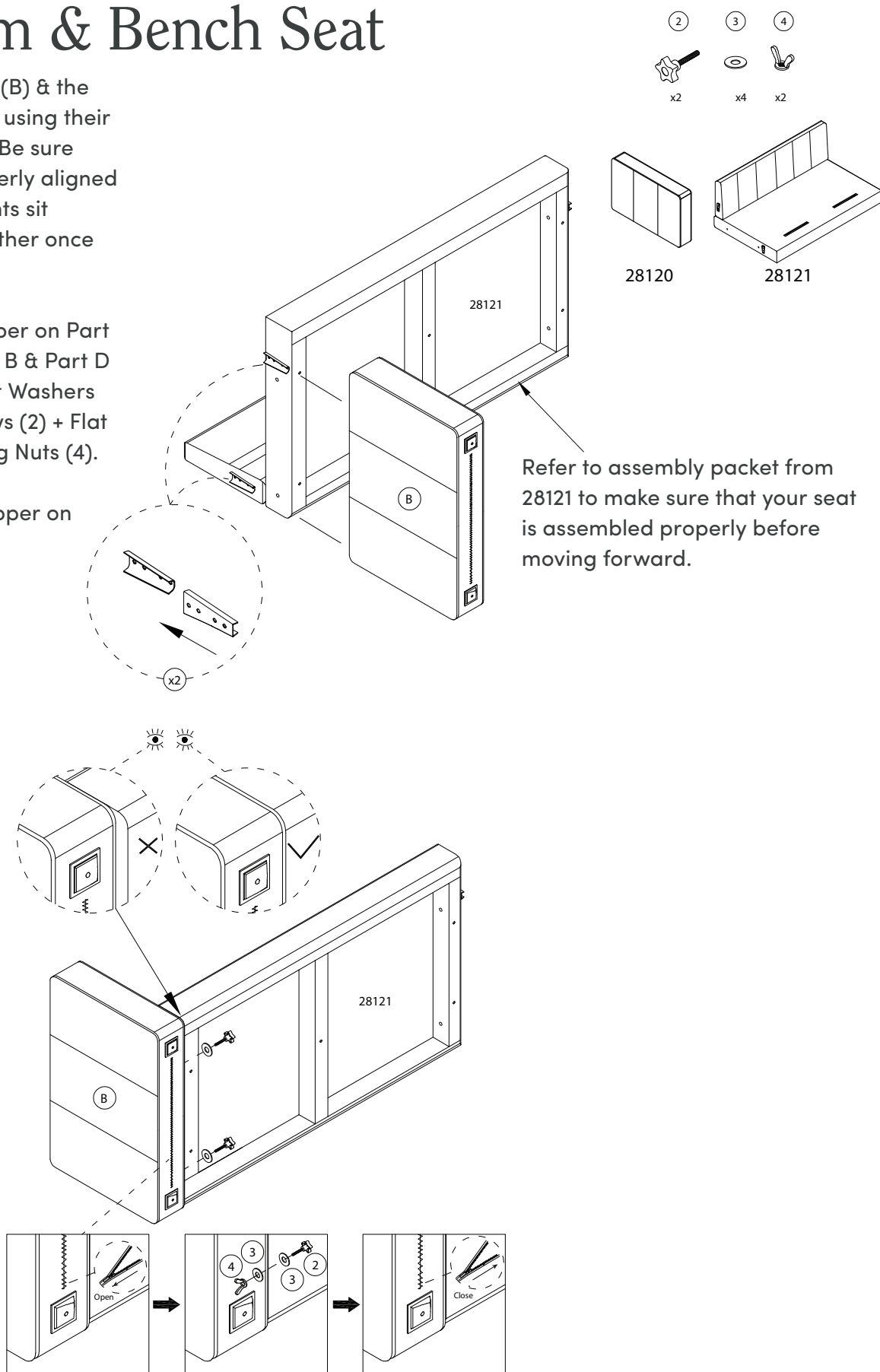


# Left Arm & Bench Seat

Join the Arm (Left) (B) & the Bench Seat (28121) using their tapered brackets. Be sure that they are properly aligned and the components sit flush with one another once complete.

Next, open the zipper on Part B then secure Part B & Part D together using Flat Washers (3) & Thumb Screws (2) + Flat Washers (3) & Wing Nuts (4).

Lastly, close the zipper on Part B.

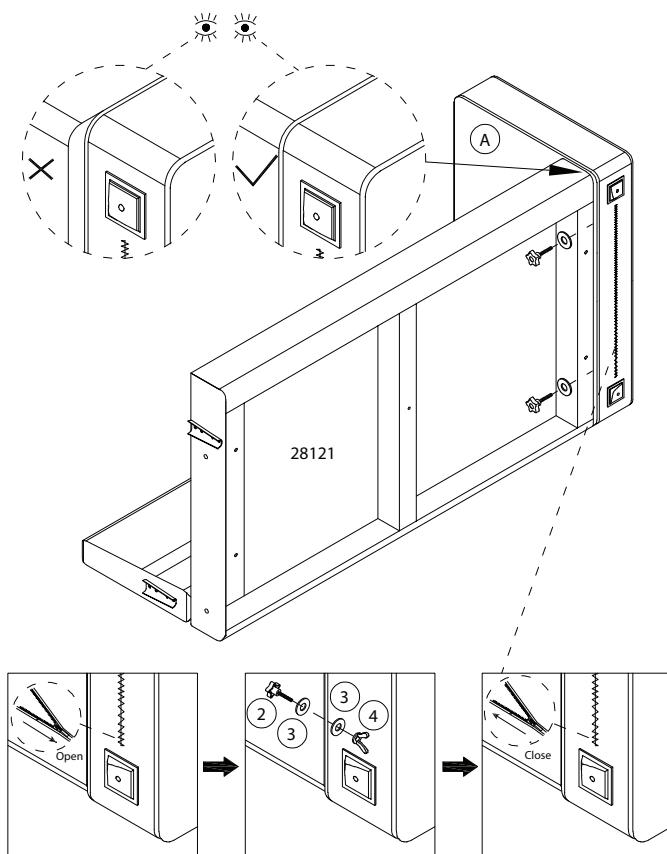
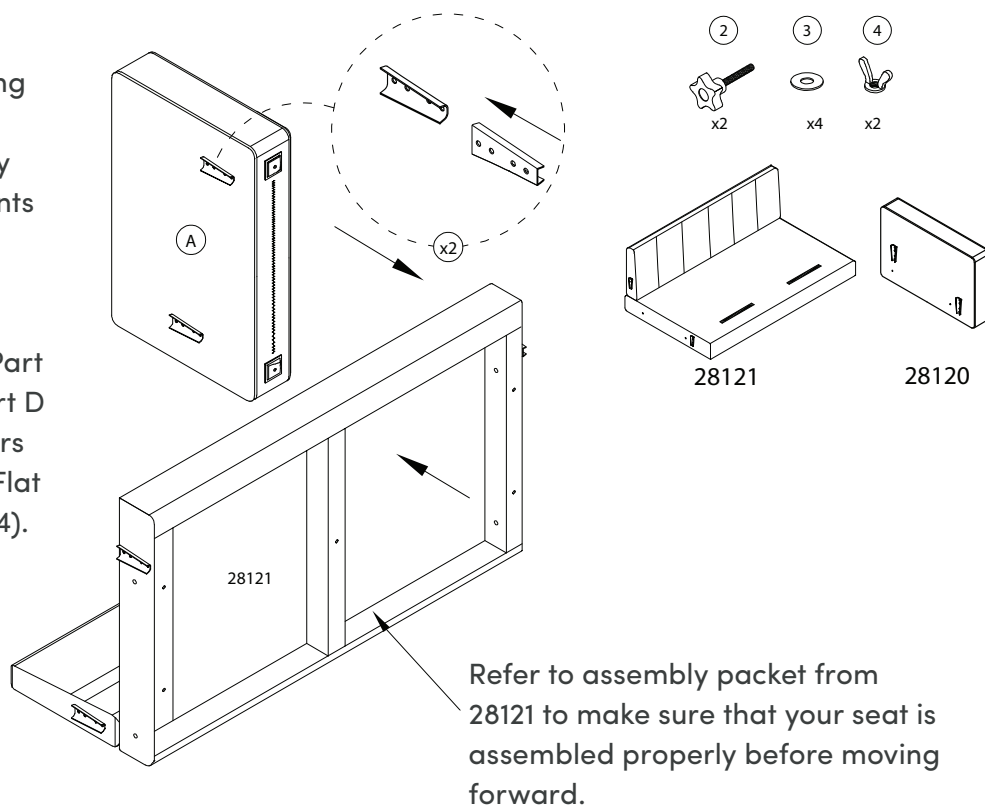


# Right Arm & Bench Seat

Join the Arm (Right) (A) & the Bench Seat (28121) using their tapered brackets. Be sure that they are properly aligned and the components sit flush with one another once complete.

Next, open the zipper on Part A then secure Part A & Part D together using Flat Washers (3) & Thumb Screws (2) + Flat Washers (3) & Wing Nuts (4).

Lastly, close the zipper on Part A.

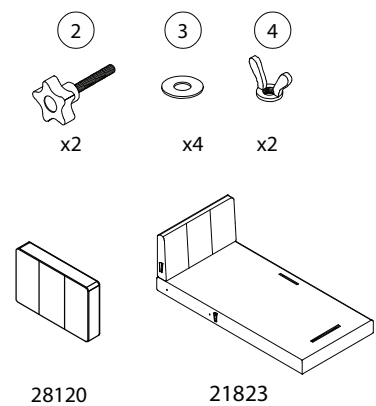
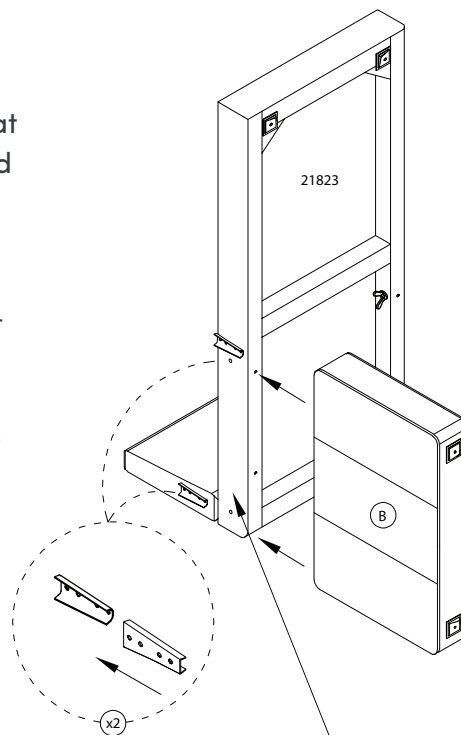


# Left Arm & Chaise

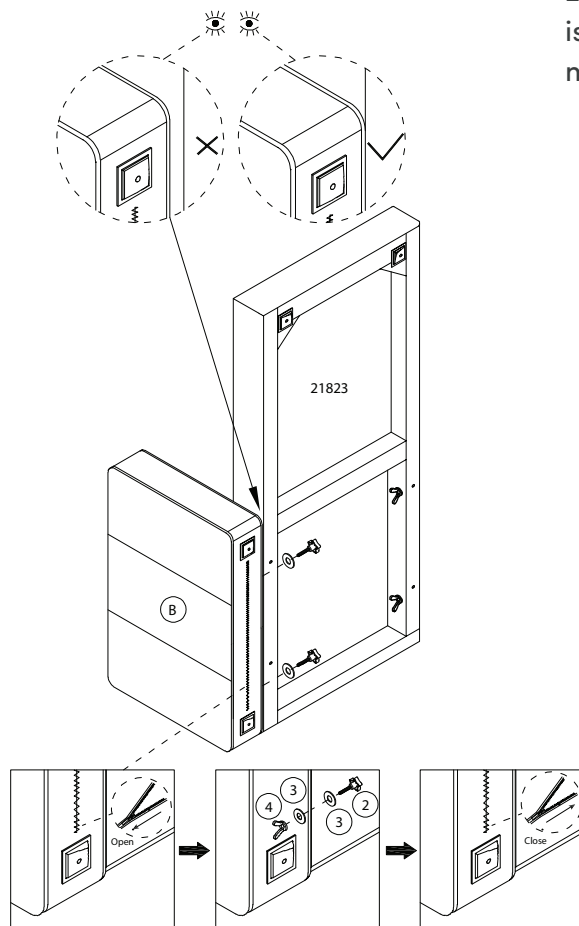
Join the Arm (Left) (B) & the Chaise (28123) using their tapered brackets. Be sure that they are properly aligned and the components sit flush with one another once complete.

Next, open the zipper on Part B then secure Part B & Part K together using Flat Washers (3) & Thumb Screws (2) + Flat Washers (3) & Wing Nuts (4).

Lastly, close the zipper on Part B.



Refer to assembly packet from 28123 to make sure that your seat is assembled properly before moving forward.

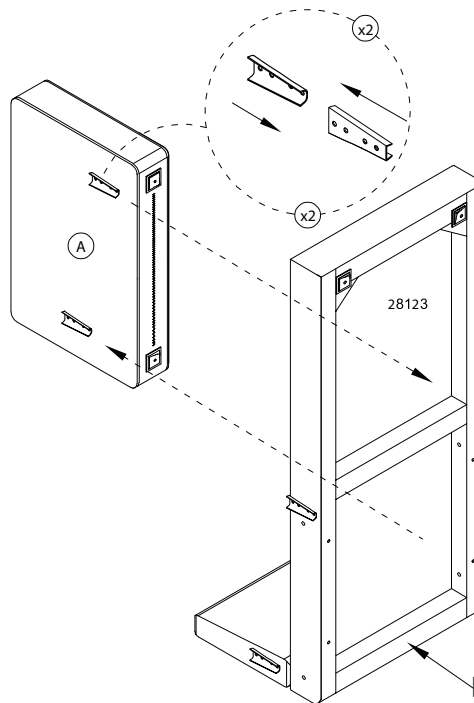
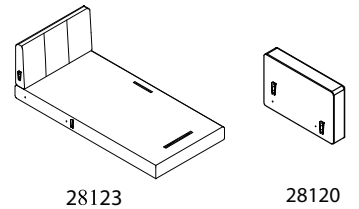
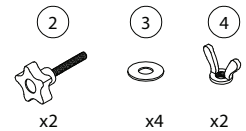


# Right Arm & Chaise

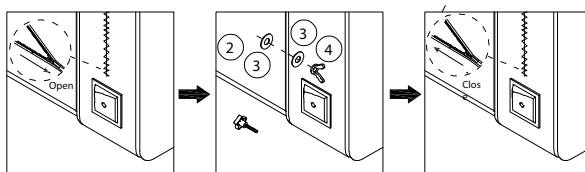
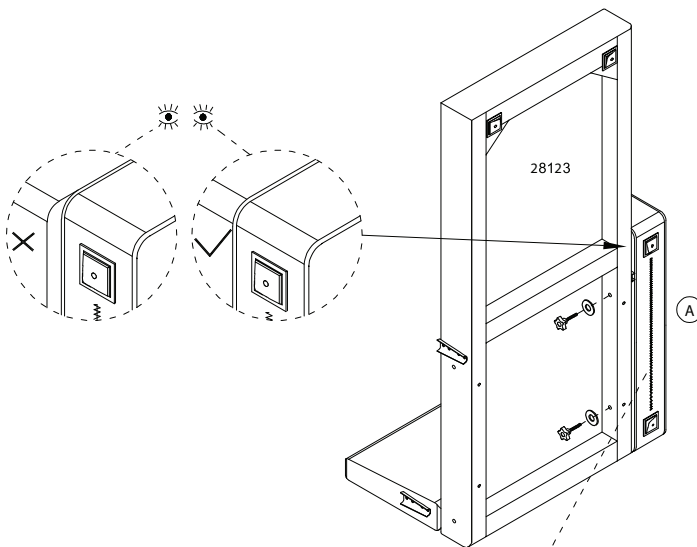
Join the Arm (Right) (A) & the Chaise (28123) using their tapered brackets. Be sure that they are properly aligned and the components sit flush with one another once complete.

Next, open the zipper on Part A then secure Part A & Part K together using Flat Washers (3) & Thumb Screws (2) + Flat Washers (3) & Wing Nuts (4).

Lastly, close the zipper on Part A.



Refer to assembly packet from 28123 to make sure that your seat is assembled properly before moving forward.

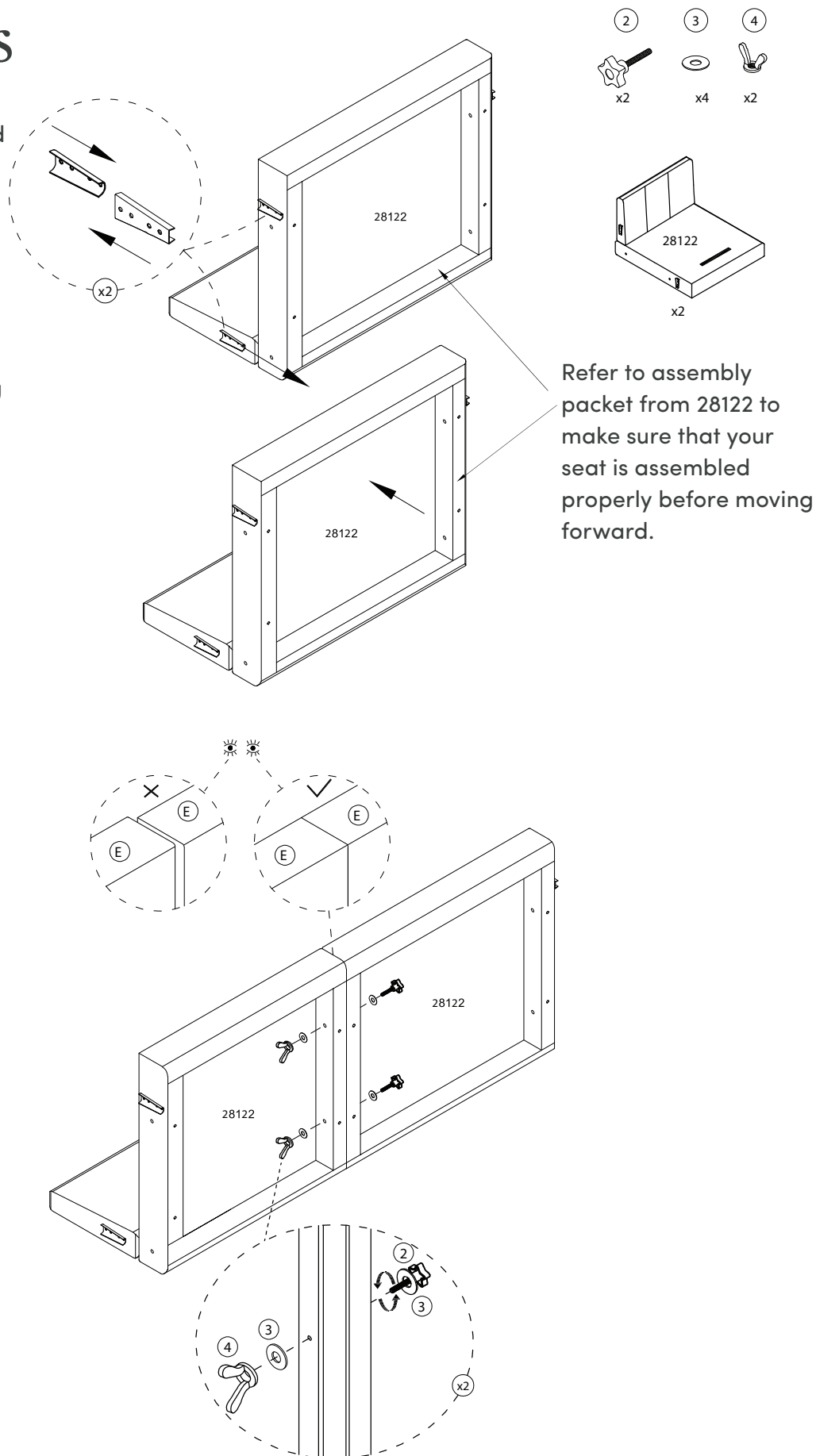




# Single Seats

Join the Single Seats (28122) together using their tapered brackets. Be sure that they are properly aligned and the components sit flush with one another once complete.

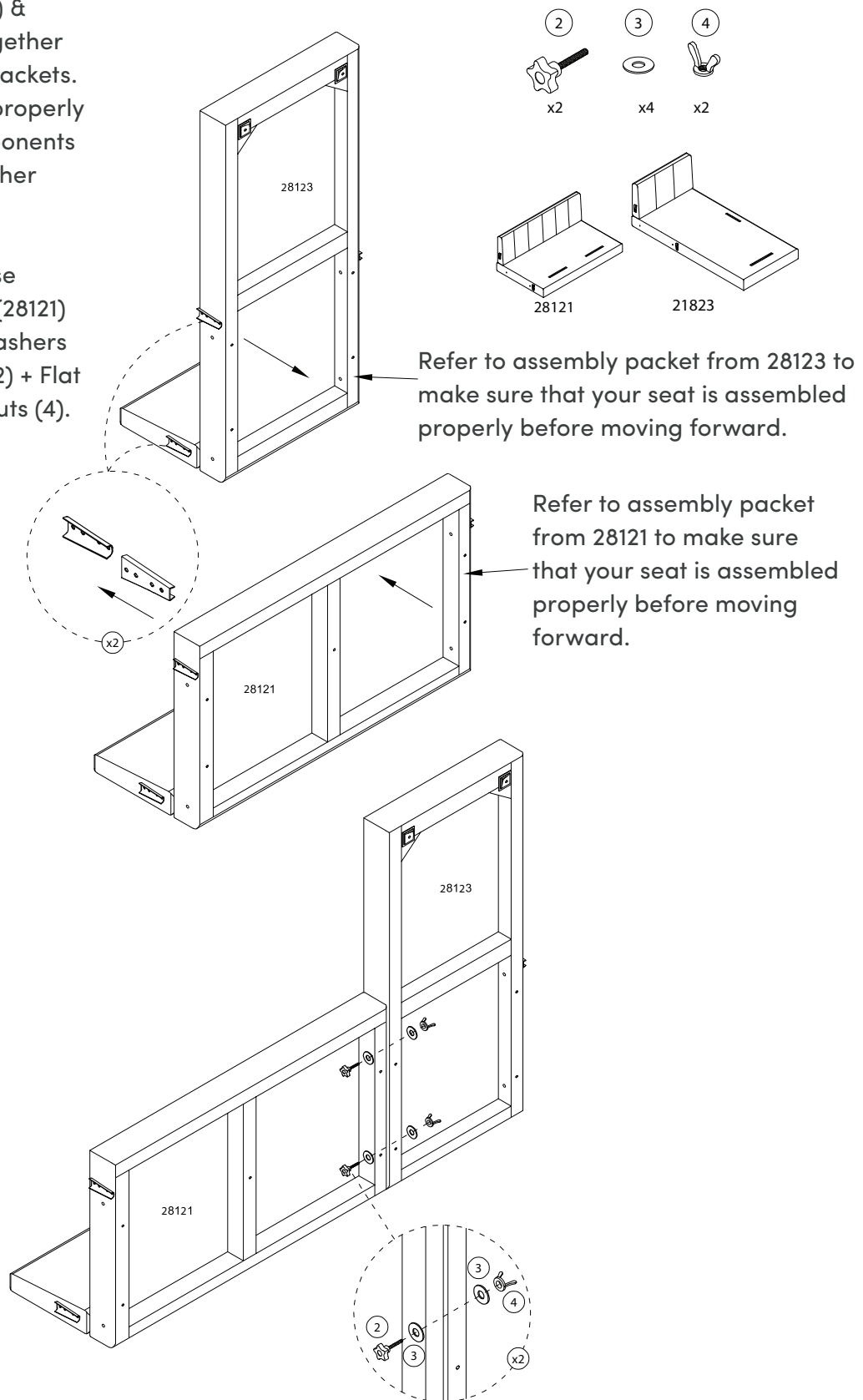
Then secure the Single Seats (28122) together using Flat Washers (3) & Thumb Screws (2) + Flat Washers (3) & Wing Nuts (4).



# Right Side Chaise & Bench Seat

Join the Chaise (28123) & Bench Seat (28121) together using their tapered brackets. Be sure that they are properly aligned and the components sit flush with one another once complete.

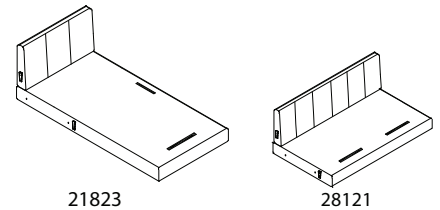
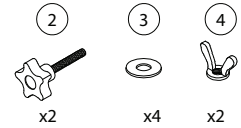
Then secure the Chaise (28123) & Bench Seat (28121) together using Flat Washers (3) & Thumb Screws (2) + Flat Washers (3) & Wing Nuts (4).



# Left Side Chaise & Bench Seat

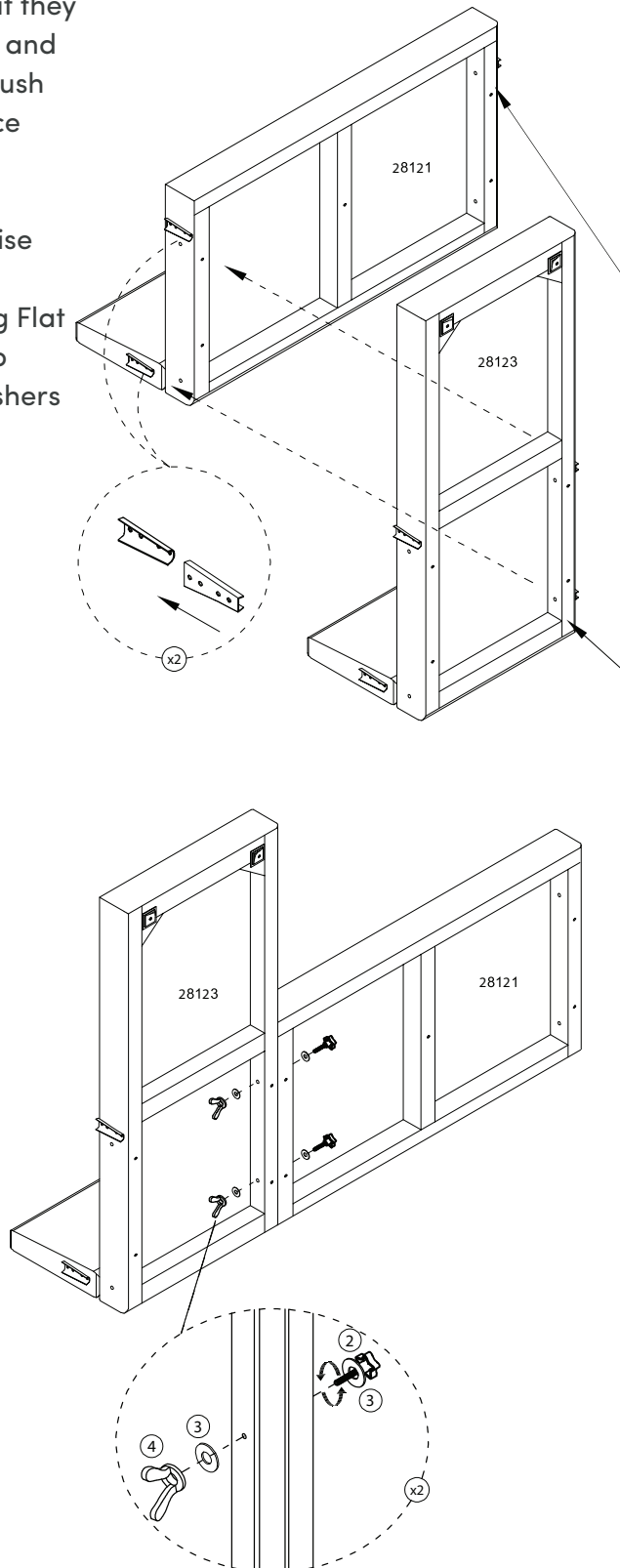
Join the Chaise (28123) & Bench Seat (28121) together using their tapered brackets. Be sure that they are properly aligned and the components sit flush with one another once complete.

Then secure the Chaise (28123) & Bench Seat (28121) together using Flat Washers (3) & Thumb Screws (2) + Flat Washers (3) & Wing Nuts (4).



Refer to assembly packet from 28121 to make sure that your seat is assembled properly before moving forward.

Refer to assembly packet from 28123 to make sure that your seat is assembled properly before moving forward.



Join the Chaise (28123) & Single Seat (28122) together using their tapered brackets. Be sure that they are properly aligned and the components sit flush with one another once complete.

2

3

4

x2

x4

x2

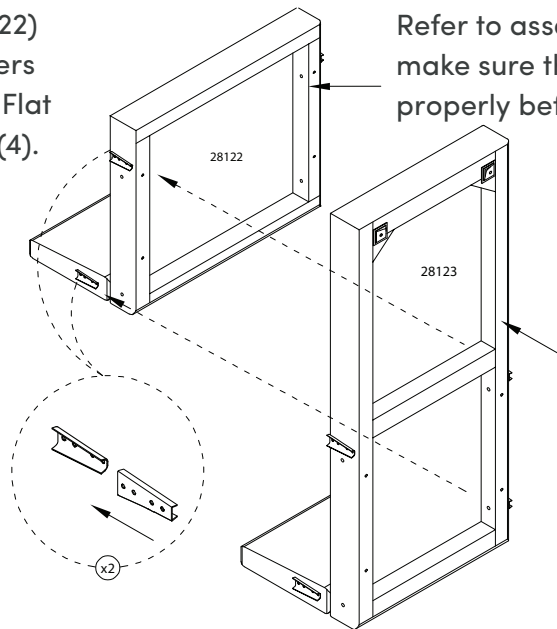
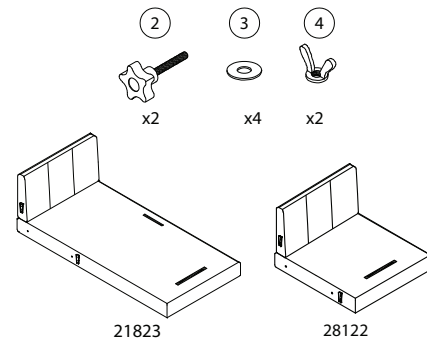
28122

28123

# Left Side Chaise & Single Seat

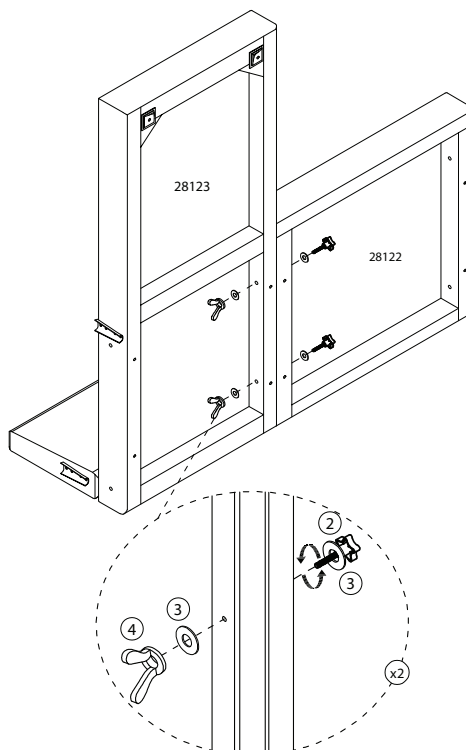
Join the Chaise (28123) & Single Seat (28122) together using their tapered brackets. Be sure that they are properly aligned and the components sit flush with one another once complete.

Then secure the Chaise (28123) & Single Seat (28122) together using Flat Washers (3) & Thumb Screws (2) + Flat Washers (3) & Wing Nuts (4).



Refer to assembly packet from 28122 to make sure that your seat is assembled properly before moving forward.

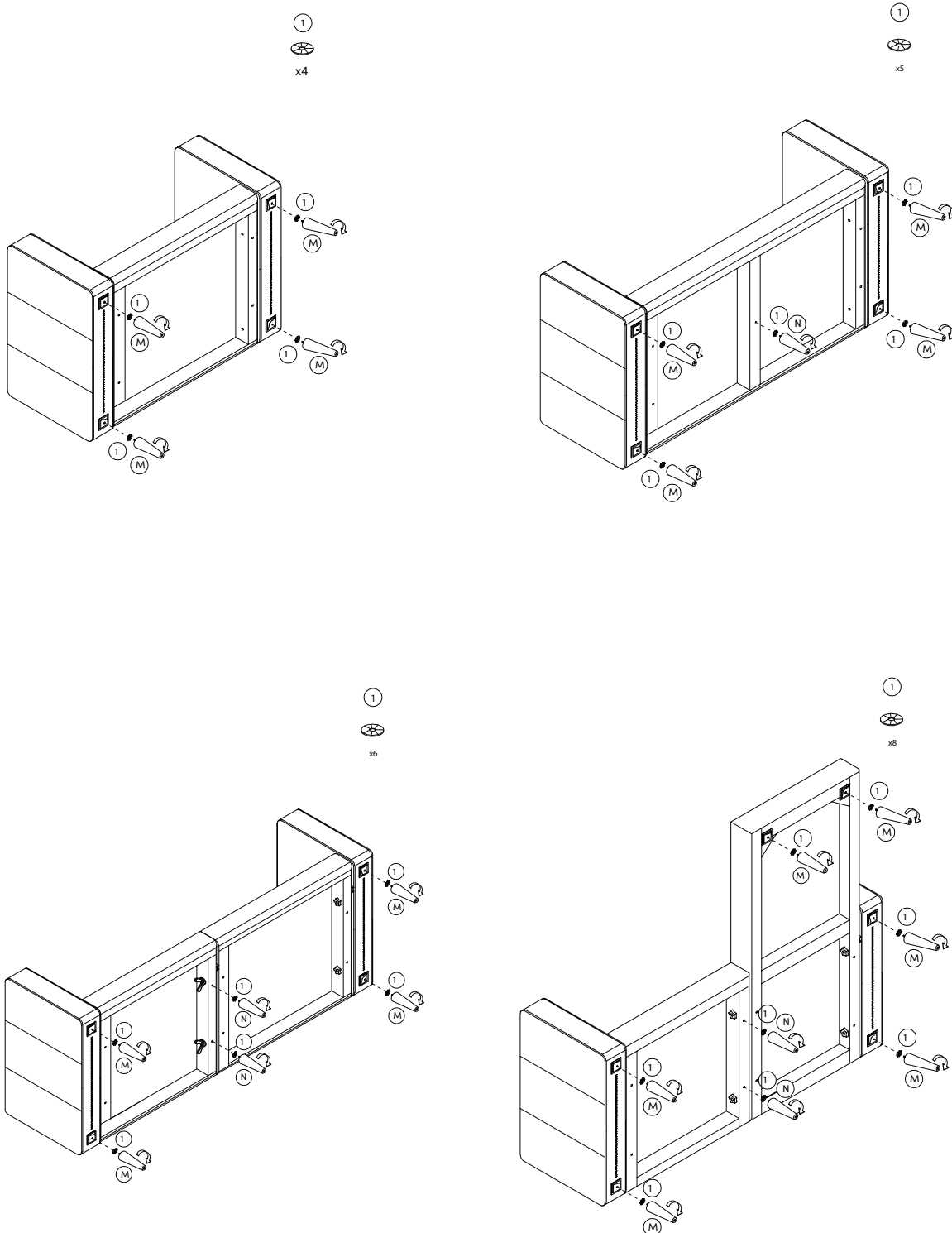
Refer to assembly packet from 28123 to make sure that your seat is assembled properly before moving forward.



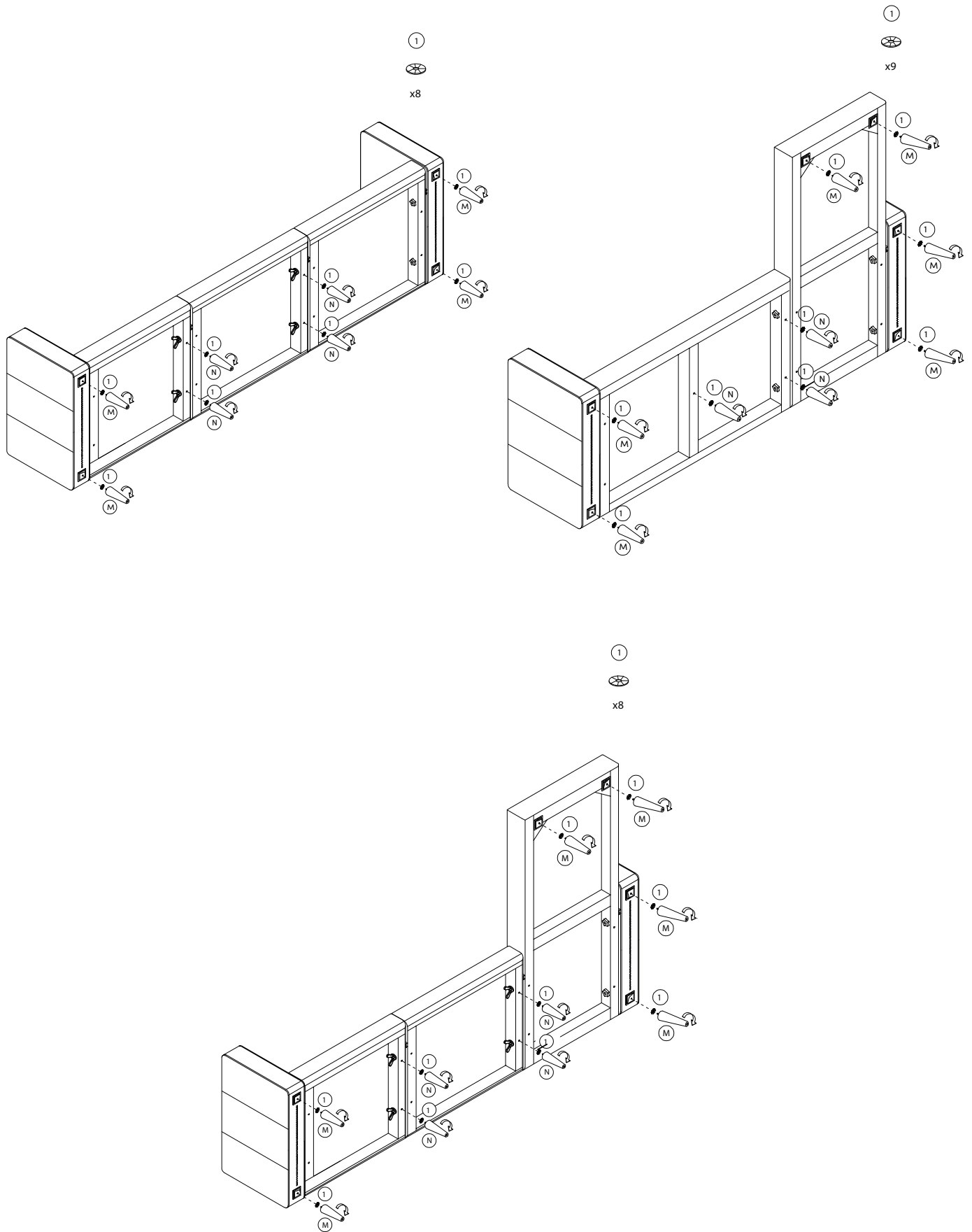
## Leg Assembly (by configuration)

Once your sofa seat components are configured properly, find your respective configuration on this page (or one of the following pages) to determine which leg components are required & where they are to be assembled.

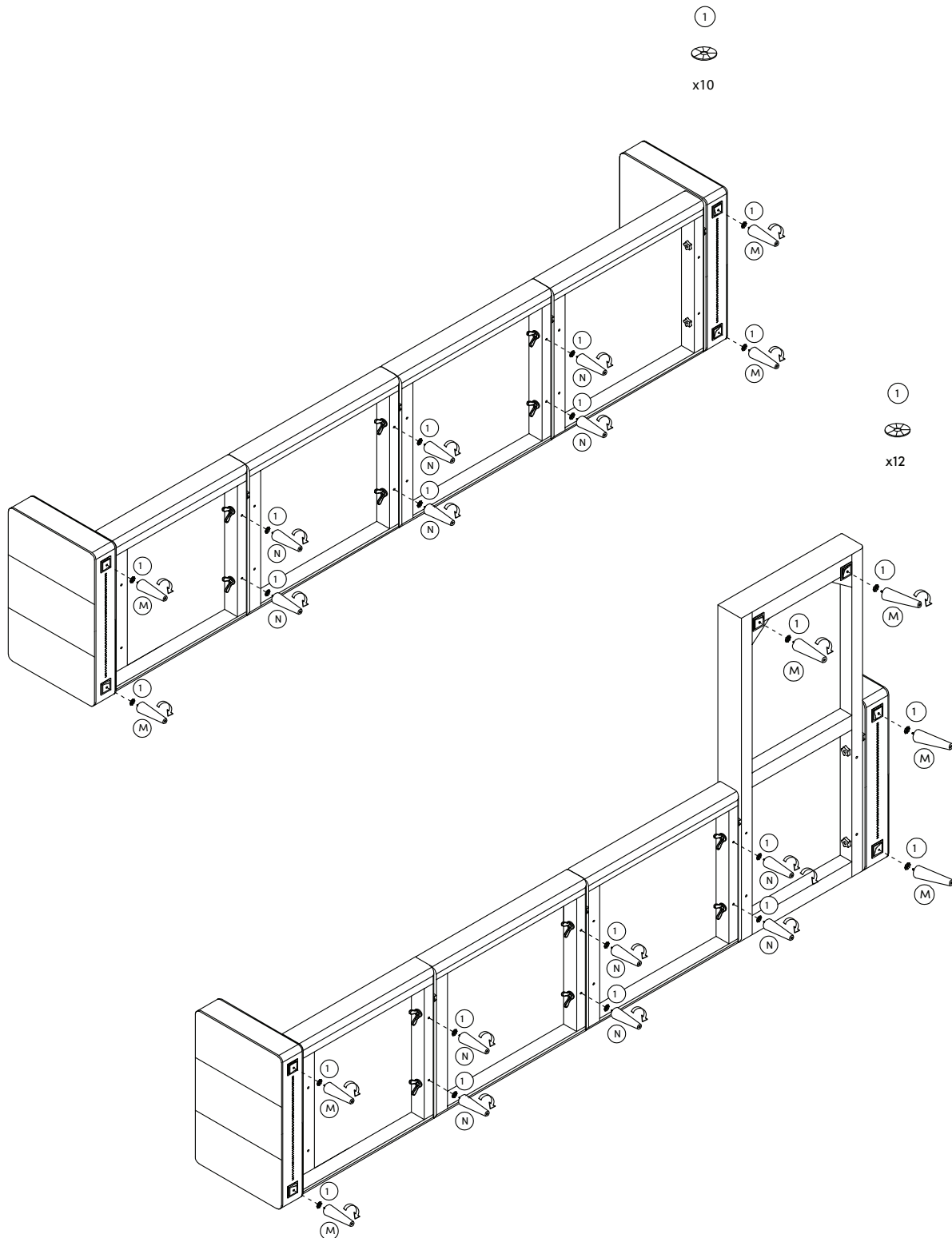
Don't forget the Plastic Washers (1) for this step.



# Leg Assembly (by configuration) cont.

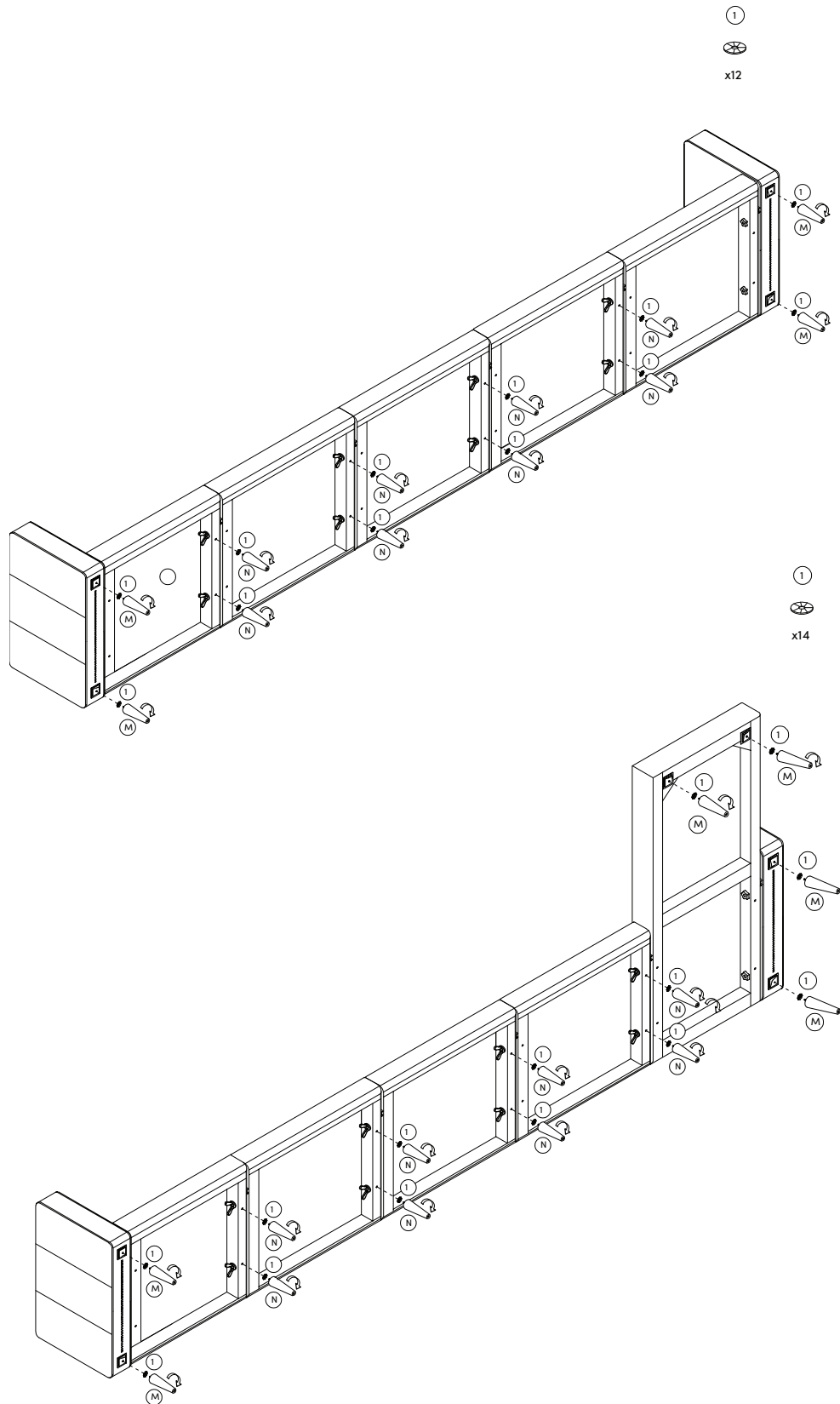


## Leg Assembly (by configuration) cont.





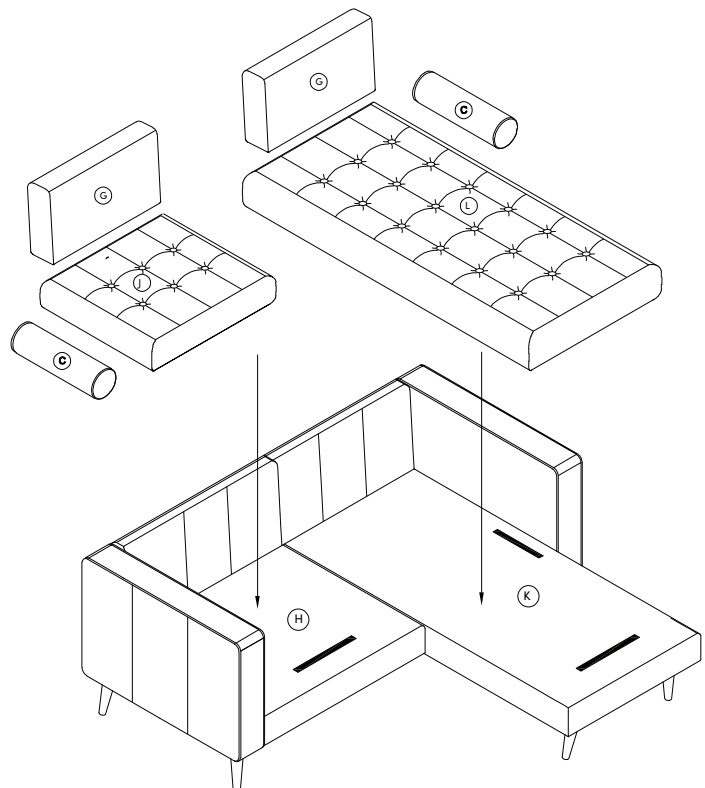
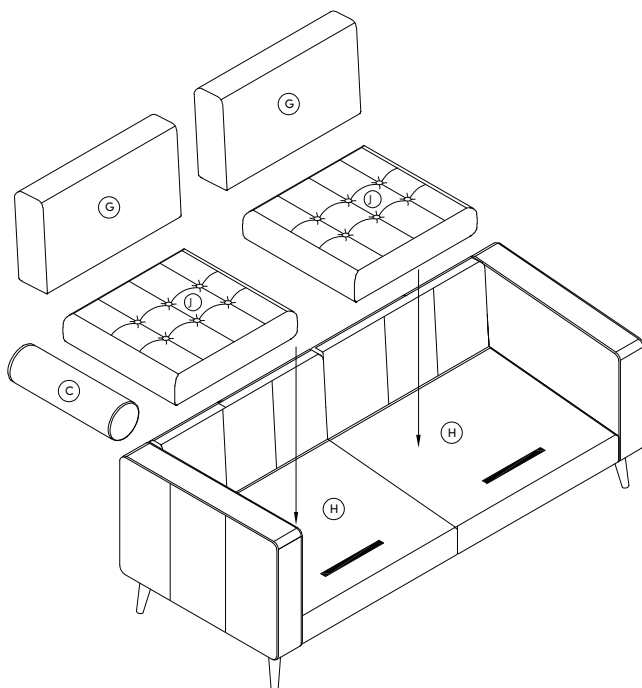
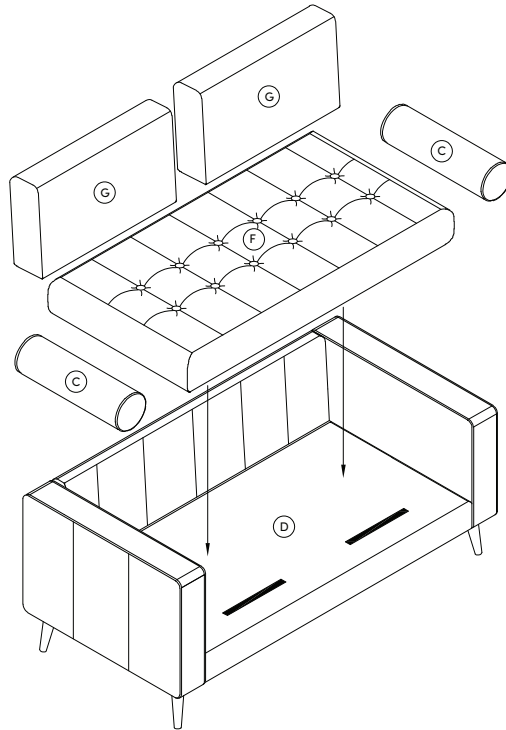
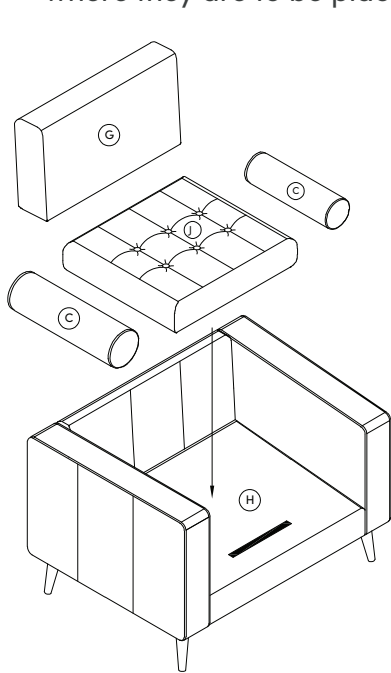
## Leg Assembly (by configuration) cont.



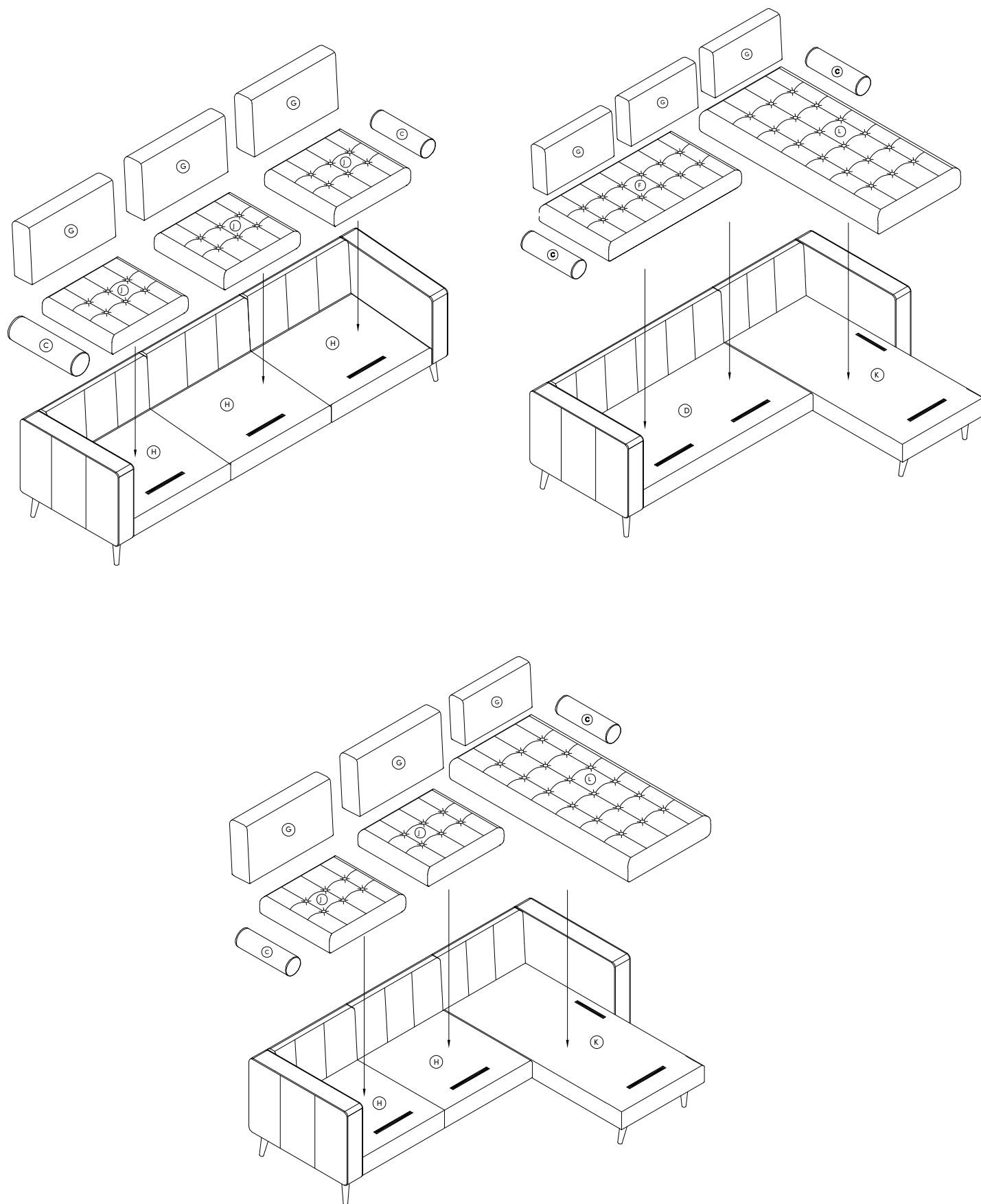
# Cushion Placement (by configuration)

Finally, its time for the cushions!

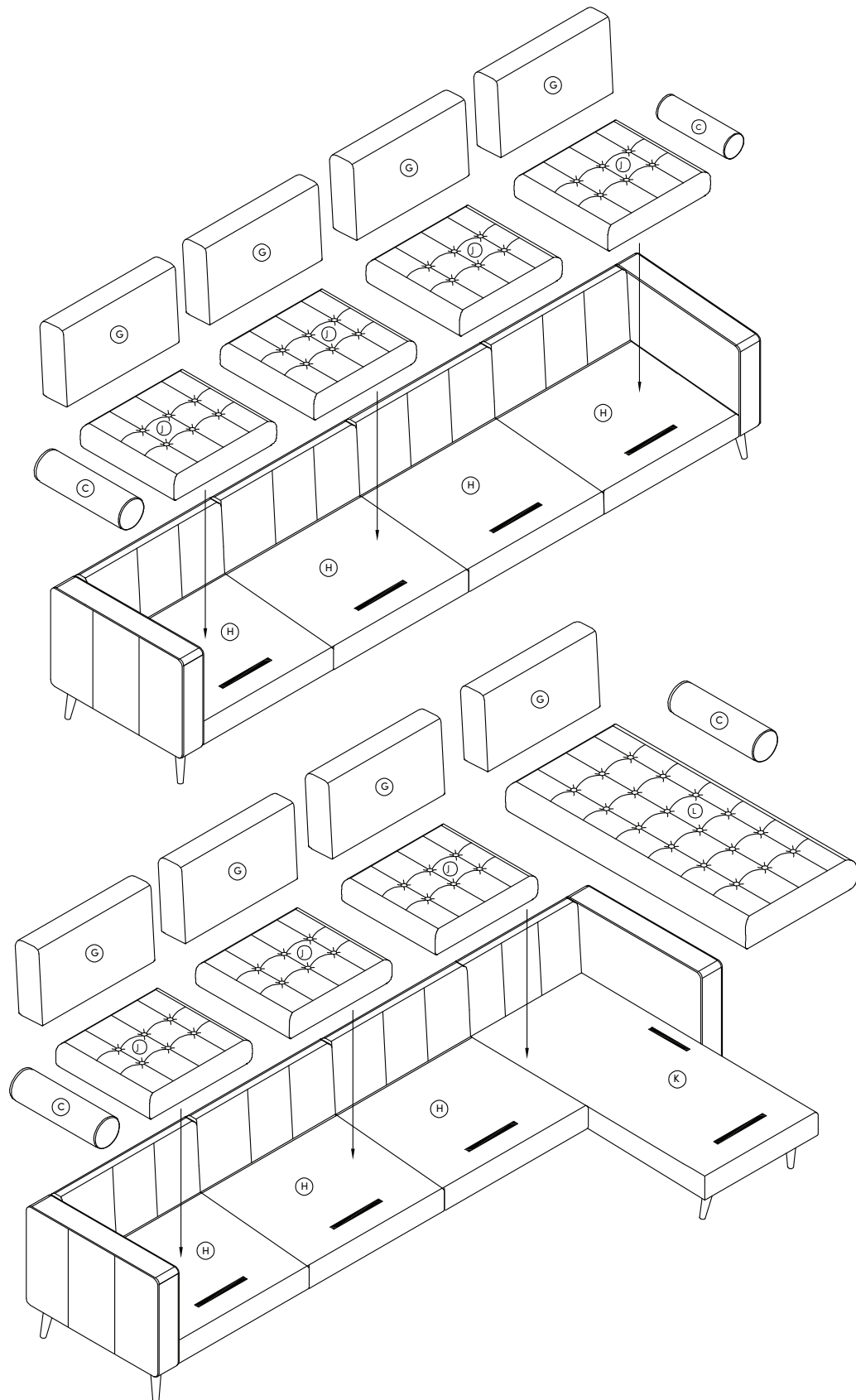
First, flip your sofa into an upright position then find your respective configuration on this page (or one of the following pages) to determine which cushion components are required & where they are to be placed.



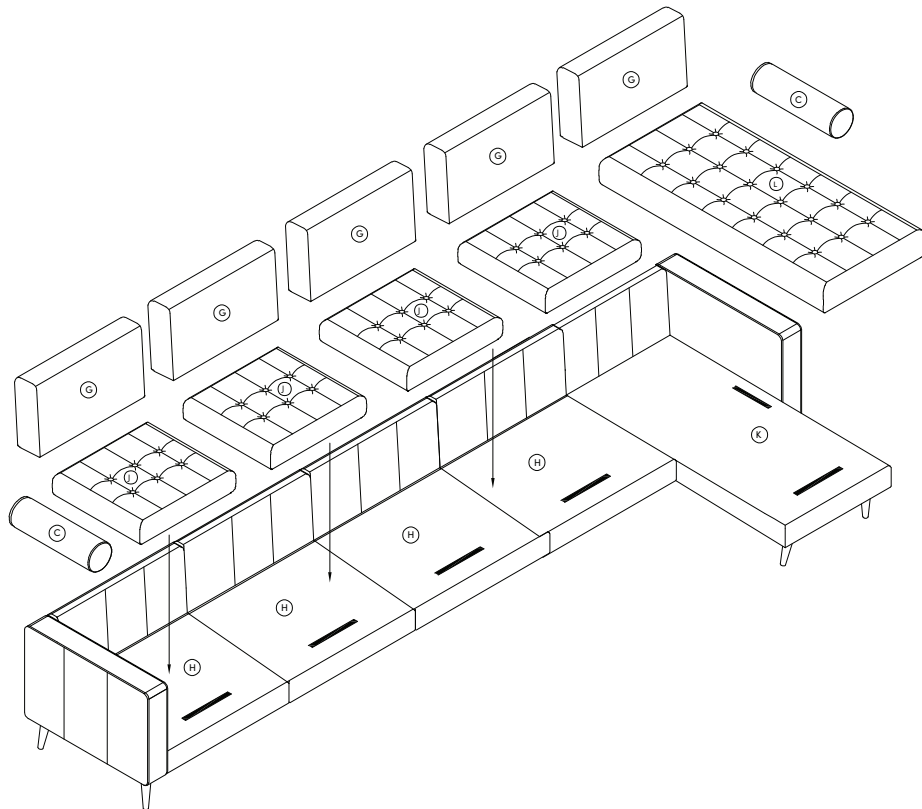
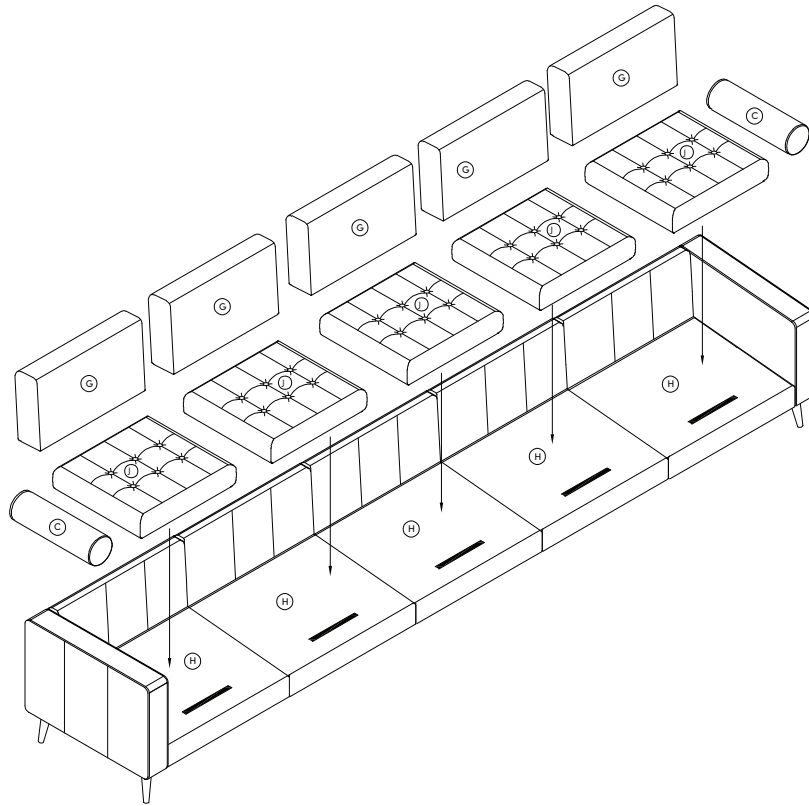
## Cushion Placement (by configuration) cont.



## Cushion Placement (by configuration) cont.



## Cushion Placement (by configuration) cont.



# No heartburn, when we handle the return

Give us a call **1-866-619-1004** or shoot us a message at **help@nathanjames.com** we will issue you a free replacement with **zero hassle**.

## Our way



Give us a call

---



Replacement

---



You

## Their way



Re-package item

---



Schedule pick up

---



Track package

---



Replacement

---



You

We really don't want you to go through the hassle of re-packaging your item and sending it back, because let's be honest...nobody has time for that.

# Safety first, fun later

We want your product to last as long as possible, so we recommend that you tighten the screws 2 weeks after assembly and for added safety check the tightness of all screws every 2 months.

For proper care and treatment, please check our website at [NathanJames.com/products](http://NathanJames.com/products)

## Safe use of this product starts with you.

Use this product responsibly with the primary concern for your safety. Follow assembly instructions carefully and inspect product upon receipt and each use.

Nathan James and its parent companies cannot be held legally responsible for any injuries or death resulted from failure to follow instructions or improper use of this product.

## Do not modify the structure of this product in any way.

Our products have been tested to meet specific safety measures as they were originally intended to be sold. Any modifications will present the risk of creating significant safety issues which NJ will not be responsible for.

## Proper use

- |               |                              |
|---------------|------------------------------|
| <b>DO NOT</b> | use for commercial purposes  |
| <b>DO NOT</b> | frolic on sofa               |
| <b>DO NOT</b> | leave spilled liquid on seat |
| <b>DO NOT</b> | use sofa if damaged          |
| <b>DO NOT</b> | make temporary repairs       |
| <b>DO NOT</b> | use outdoors                 |

# We are only in business if you're happy

For starters, thanks for being you.

☎ Toll-free at 1-866-619-1004

✉ Help@nathanjames.com

🌐 NathanJames.com/help

We do our best to ensure your furniture arrives without any problems, but occasionally mistakes happen—as humans we are imperfect beings. In the event that a part is damaged or missing, we will be more than happy to provide you with replacement part(s) for free.

## Warranty

This product comes with a lifetime warranty from the date of purchase. Please use your phone to scan the QR code to register your product or visit <https://goo.gl/i9dk3q>



### Did we do alright? Please spread the love!

If you are happy with your product, tell your friends and family about us or even better leave us a review online. Spreading the word gives us the opportunity to make more people happy and keep our prices low for your next purchase.

*Brooke Burdon*

Founder, Nathan James