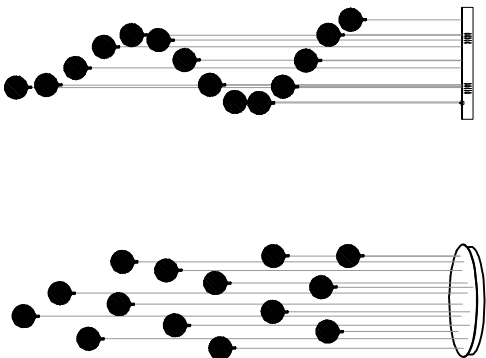


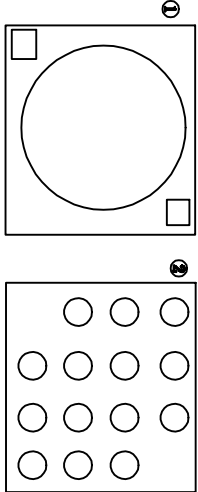
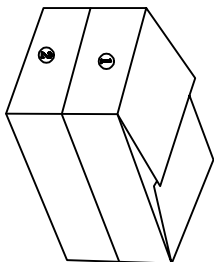
Installation Instructions



Model 1

Model 2

Packaging Diagram



Inner Packaging List:

First layer lamp body + accessories package

Second layer marble ball

Before assembly:



★ Please read all instructions carefully.

★ Keep the instruction manual for reference.

★ Separate and inventory all parts and hardware.

E-mail Address: [Lighting@ritservice.com](mailto:Lighting@ritservice.com)

★ Keep all small parts and packaging materials of this product away from infants and children as they may cause serious injuries.

★ Product parameters:

Light: 9W/4 Buttons: 3W (single) Color temperature: 3000K

Installation video and product website:

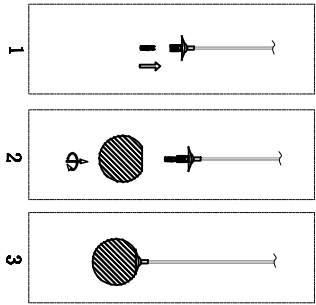
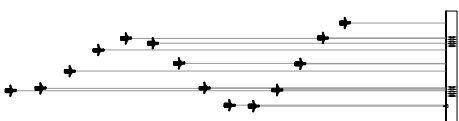
Youtube URL: <https://www.youtube.com/watch?v=16T12kq7Tw>

or QR

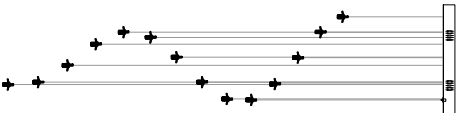
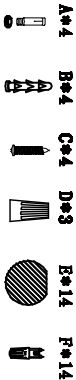


Marble ball assembly:

1. Take out the G9 light source and install it on the lamp head
2. Take out the marble ball and screw it on the lamp head
3. Installation completed

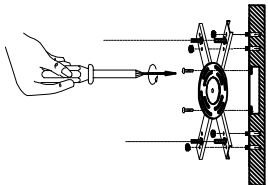


Accessories List



Light body IPCS

Lamp body installation: Take out the lamp body, connect the main line of the lamp body and the power line. Align the holes of the lamp body with the holes of the hanging plate screws, and tighten the nuts. Adjust the height of the steel wire.



Installation of hanging plate: Take out the hanging plate and fix it on the ceiling where it needs to be installed with screws.

