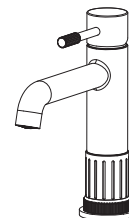


NO.	Description
1	Handle lever
2	Screw
3	Handle cup
4	Cup
5	Gland
6	Cartridge
7	Body
8	Bubbler
9	Extended base
10	Base
11	Gasket
12	Threaded pipe
13	Gasket
14	Gasket
15	Nut
16	Screws
17	Braided tube
18	Braided tube



Single Handle Basin Faucet

product is cUPC, NSF-61, NSF 372, AB1953, CEC,
WaterSense certified by IAPMO R&T.
ASME A112.18.1/CSA B125.1

RECOMMENDED TOOLS



Adjustable Wrench



Channel Locks



Goggles



Teflon tape



Screwdriver



Allen key

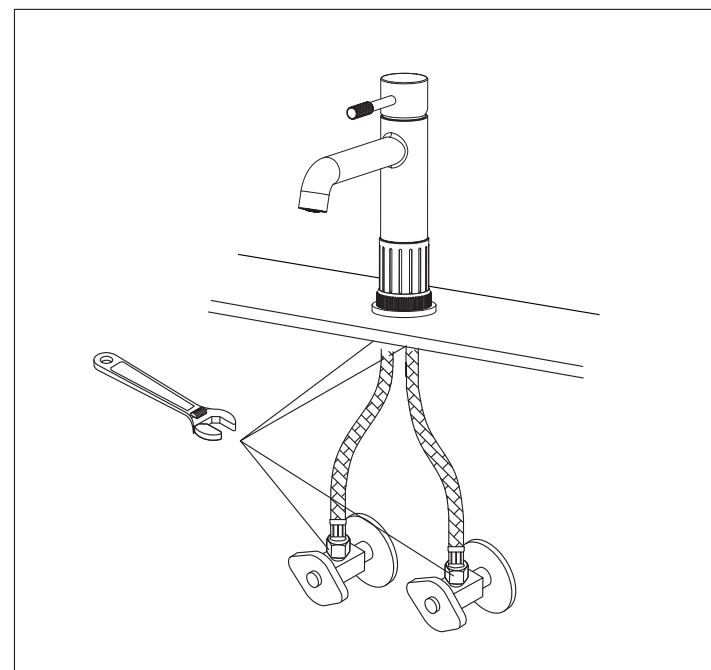


WARNING:
Please keep the
tool for future
use!

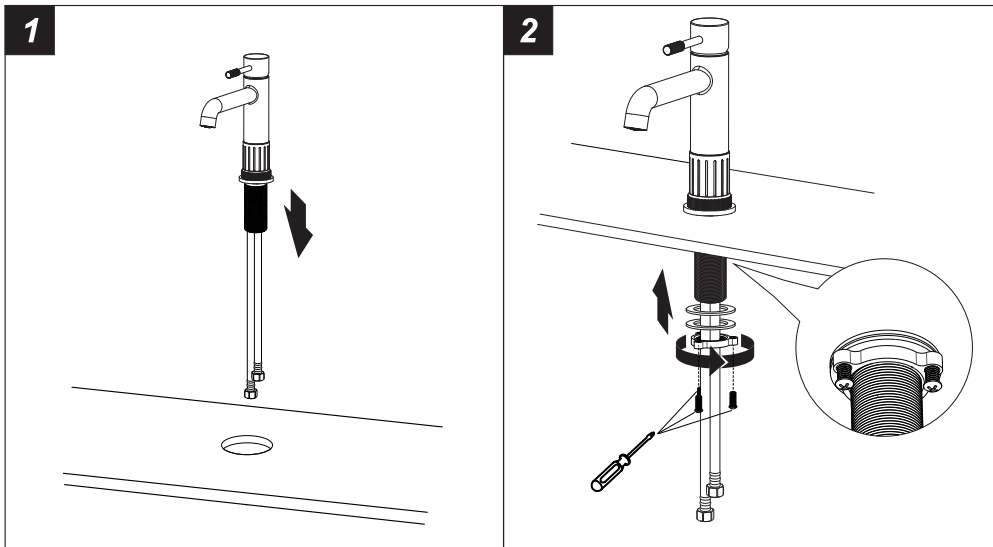


Attention:
for easy installation, you will need:
1.To read all the installation instruction completely before
beginning.
2.To read all the warning, attention and maintenance
information.
3.To purchase the proper supply lines.

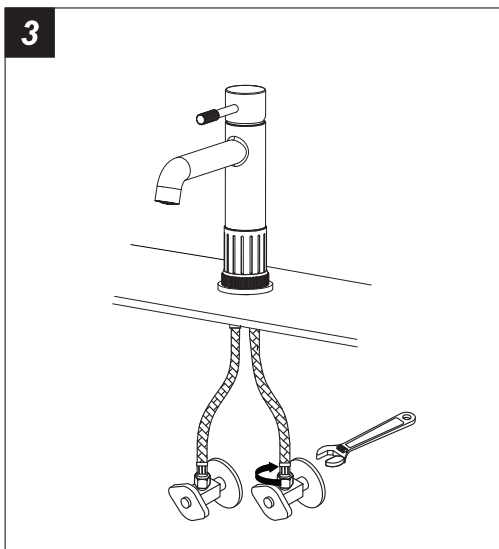
The tools might be applied to the following places:



Step 1 Faucet installation

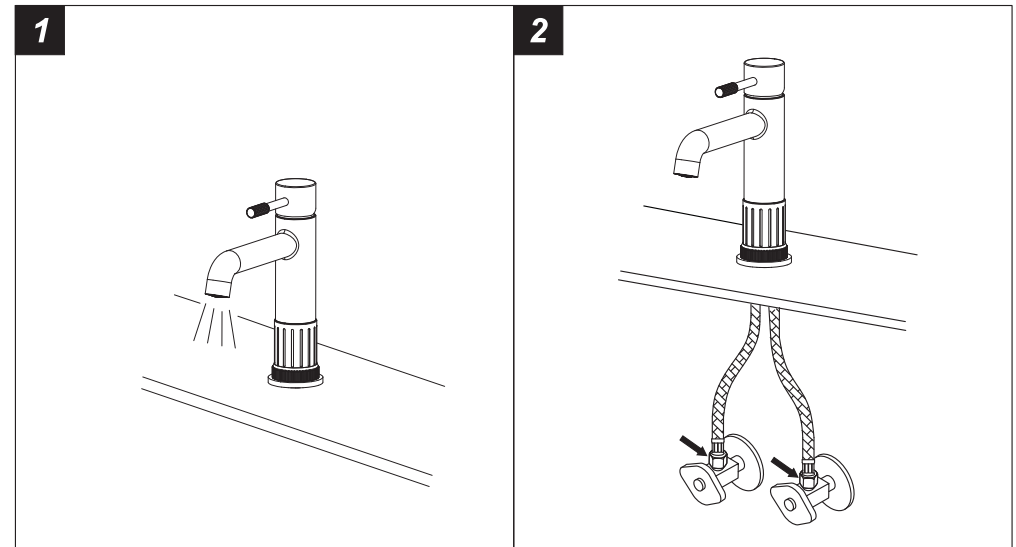


1. Unscrew the pre-assembled washers & lock nut.
2. Screw rubber washer, metal washer onto the pipe under sink and screw with lock nut And tighten the screws.



3. Connect the flexible hoses to water supply valve (not included) and copper tubes, and tighten it with adjustable wrench. **DON'T OVER TIGHTEN!**
Caution: make sure connect the hot and cold flexible hose to supply valves correctly.

Step 2 Checking and testing



1. Turn the faucet handle all the way on, turn on hot and cold water supply and flush water lines for one minute.
2. Check all connections at arrows for leaks, re-tighten it if necessary.



BUT DON'T OVERTIGHTEN

Step 3 Cleaning and care

Daily cleaning and care are required in order to keep the product shining and properly working.

- 1 Clean it with water and dry it with soft cloth.
- 2 Clean the product with gentle liquid or glass cleaner.
- 3 Don't use acid cleaner.
- 4 Don't clean with abrasive material, abrasive paper or knife.